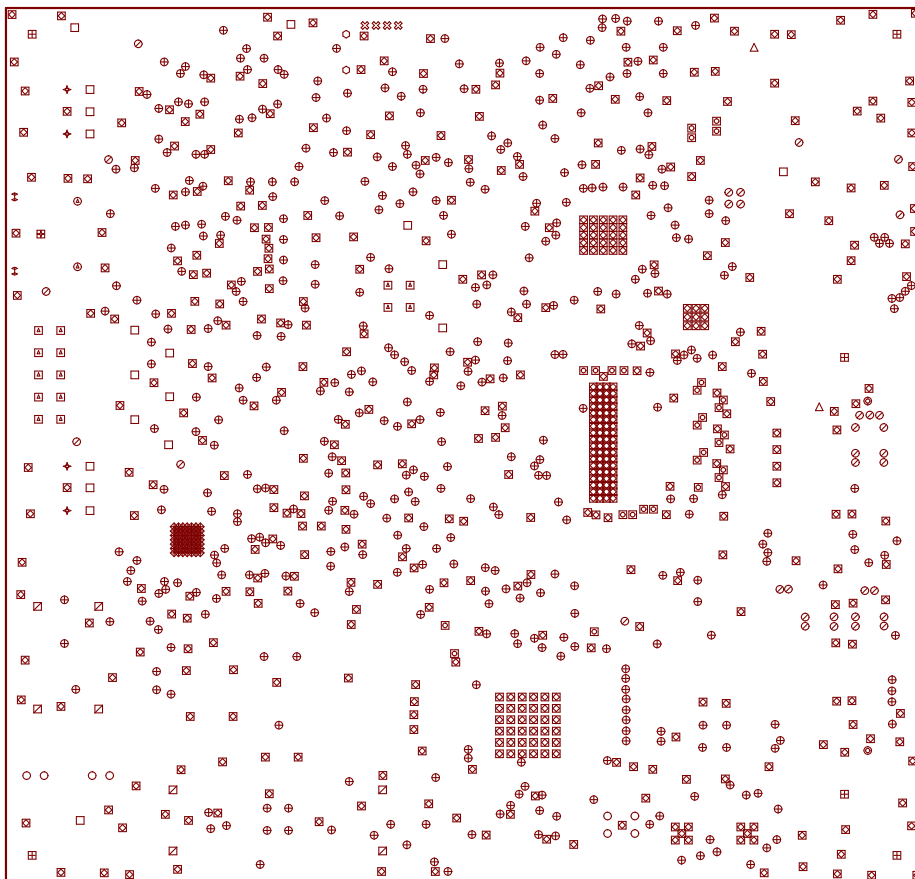




## PurePath™ Console MotherBoard AIP006G



**BOARD DIMS = 105x100mm**

Through Holes				
Diameter	Tolerance	Quantity	Plated	Symbol
0.15		49	Yes	⊕
0.25		452	Yes	⊕
0.30	+0.10 / -0.00	505	Yes	⊗
0.38		28	Yes	⊗
0.51		34	Yes	⊗
0.64		4	Yes	⊗
0.64	+/- 0.06	2	Yes	△
0.81		8	Yes	○
0.89		19	Yes	□
0.91		2	Yes	○
1.02		14	Yes	⊞
1.14		4	Yes	+
3.25	+0.10 / -0.00	6	Yes	⊞
1.02		2	No	⊗
1.70		8	No	⊞
1.0x.5mm SLOT		2	Yes	⊗
1.3x2.5mm SLOT		1	Yes	⊞
2mm SQUARE NPTH		2	No	⊞

1. ALL PLATED THROUGH HOLES TO BE CHEMICALLY CLEANED BEFORE PLATING.
2. END ITEM TO MEET OR EXCEED IPC-A-600.
3. MATERIAL: FR-370HR.
4. FINISHED THICKNESS = 1.6mm +/-0.125mm
5. ALL COPPER WEIGHT = 1 OZ.
6. POSITION ACCURACY = +/-0.0375mm
7. APPLY BLUE ENTHONE SOLDERMASK TO BOTH SIDES OF BOARD.  
SEPARATE ARTWORK FOR TOP AND BOTTOM.
8. APPLY WHITE LPI SILKSCREEN TO BOTH SIDES OF BOARD.  
SEPARATE ARTWORK FOR TOP AND BOTTOM.
9. WARPAGE = +/- 0.125mm PER 50mm MAX.
10. SMOBC.
11. ENIG (ELECTROLESS NICKEL / IMMERSION GOLD)
12. ALL HOLES ARE PLATED UNLESS OTHERWISE STATED.

**UNLESS OTHERWISE SPECIFIED  
DIMENSIONS ARE METRIC**

**TOLERANCES:** CORNERS = 1.75mm R MAX  
ANGLES +/-5 DEGREES

**HOLE DIAMETERS:** <= 2.0mm = +/-0.075mm  
> 2.0mm = +/-0.10mm

**DIMENSIONAL LIMITS APPLY  
AFTER PLATING AND COATING**

## NOTES TO FAB