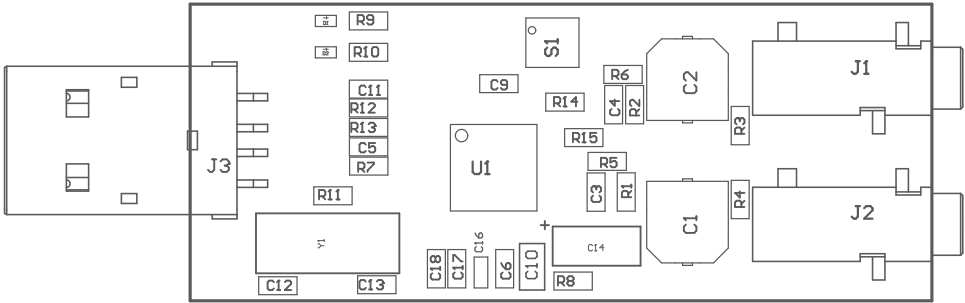


Z21 ■Install label in silkscreened box after final wash. Text shall be 8 pt font. Text shall be per the Label Table in the PDF schematic.

Z22 ■These assemblies are ESD sensitive, ESD precautions shall be observed.

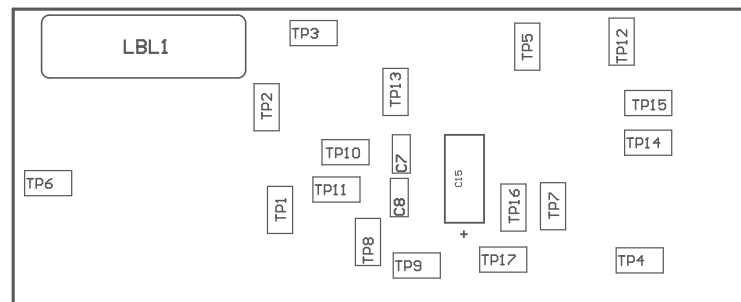
Z23 ■These assemblies must be clean and free from flux and all contaminants. Use of no clean flux is not acceptable.

Z24 ■These assemblies must comply with workmanship standards IPC-A-610 Class 2, unless otherwise specified.



COMPONENTS MARKED 'DNP' SHOULD NOT BE POPULATED.  
ASSEMBLY VARIANT: 001

PCB VIEWED FROM TOP SIDE	BOARD #:AMPS149	REV: A	SUN REV: Not in version control
M5 Assembly Top	TID #: N/A		
PLOT NAME = Top Assembly Drawing	GENERATED : 8/6/2021 12:29:35 PM	TEXAS INSTRUMENTS	



COMPONENTS MARKED 'DNP' SHOULD NOT BE POPULATED.  
 ASSEMBLY VARIANT: 001

PCB VIEWED FROM BOTTOM SIDE	BOARD #:AMPS149	REV: A	SUN REV: Not in version control
M6 Assembly Bottom	TID #: N/A		
PLOT NAME = Bottom Assembly Drawing	GENERATED : 8/6/2021 12:29:36 PM	TEXAS INSTRUMENTS	