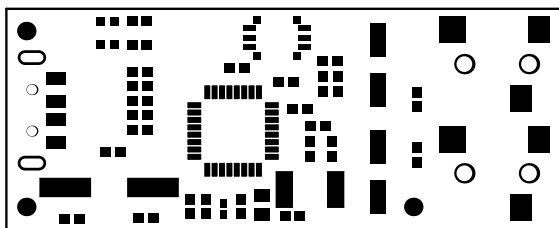
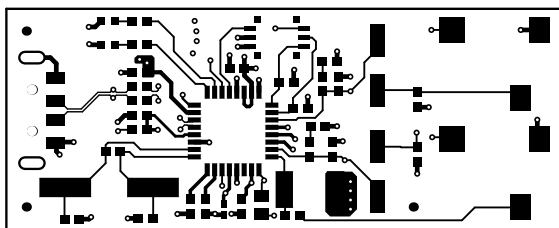


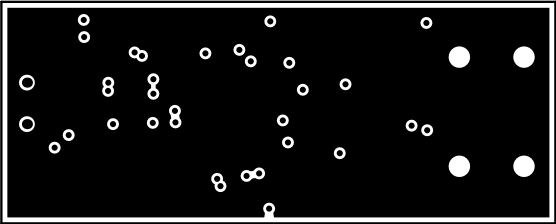
ALL ARTWORK VIEWED FROM TOP SIDE	BOARD #:AMPS149	REV: A	SUN REV: Not in version control
LAYER NAME = Top Overlay	TID #: N/A		
PLOT NAME = Top Overlay	GENERATED : 8/6/2021 3:41:35 PM	TEXAS INSTRUMENTS	



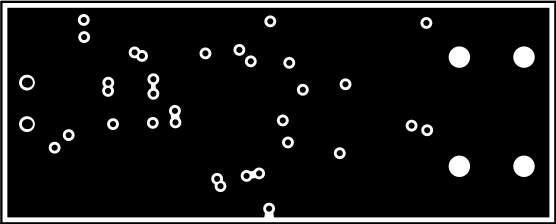
ALL ARTWORK VIEWED FROM TOP SIDE	BOARD #:AMPS149	REV: A	SUN REV: Not in version control
LAYER NAME = Top Solder	TID #: N/A		
PLOT NAME = Top Solder Mask	GENERATED : 8/6/2021	3:41:36 PM	TEXAS INSTRUMENTS



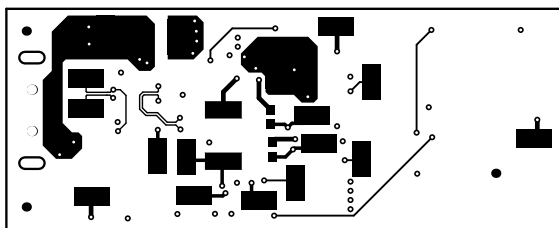
ALL ARTWORK VIEWED FROM TOP SIDE	BOARD #:AMPS149	REV: A	SUN REV: Not in version control
LAYER NAME = Top Layer	TID #: N/A		
PLOT NAME = Top Layer	GENERATED : 8/6/2021	3: 41:36 PM	TEXAS INSTRUMENTS



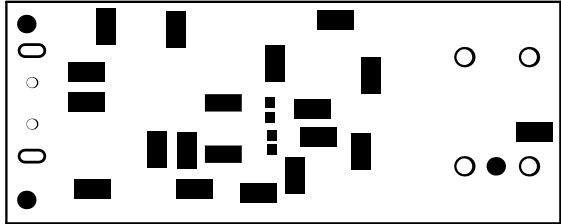
ALL ARTWORK VIEWED FROM TOP SIDE	BOARD #:AMPS149	REV: A	SUN REV: Not in version control
LAYER NAME = GND1 Layer	TID #: N/A		
PLOT NAME = Signal 1	GENERATED : 8/6/2021	3:41:36 PM	TEXAS INSTRUMENTS



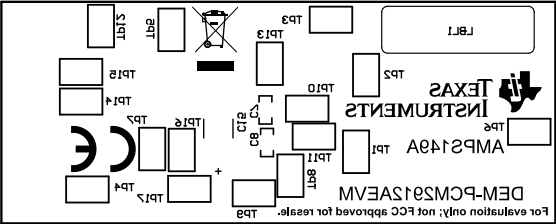
ALL ARTWORK VIEWED FROM TOP SIDE	BOARD #:AMPS149	REV: A	SUN REV: Not in version control
LAYER NAME = GND2 Layer	TID #: N/A		
PLOT NAME = Signal 2	GENERATED : 8/6/2021	3:41:37 PM	TEXAS INSTRUMENTS



ALL ARTWORK VIEWED FROM TOP SIDE	BOARD #:AMPS149	REV: A	SUN REV: Not in version control
LAYER NAME = Bottom Layer	TID #: N/A		
PLOT NAME = Bottom Layer	GENERATED : 8/6/2021	3:41:37 PM	TEXAS INSTRUMENTS



ALL ARTWORK VIEWED FROM TOP SIDE	BOARD #:AMPS149	REV: A	SUN REV: Not in version control
LAYER NAME = Bottom Solder	TID #: N/A		
PLOT NAME = Bottom Solder Mask	GENERATED : 8/6/2021	3:41:37 PM	TEXAS INSTRUMENTS

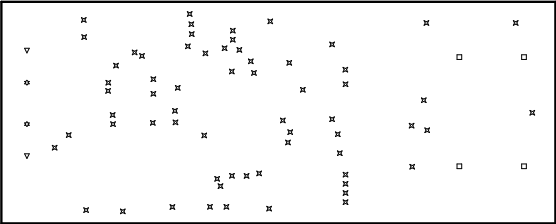


ALL ARTWORK VIEWED FROM TOP SIDE	BOARD #:AMPS149	REV: A	SUN REV: Not in version control
LAYER NAME = Bottom Overlay	TID #: N/A		
PLOT NAME = Bottom Overlay	GENERATED : 8/6/2021 3:41:38 PM	TEXAS INSTRUMENTS	

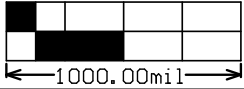
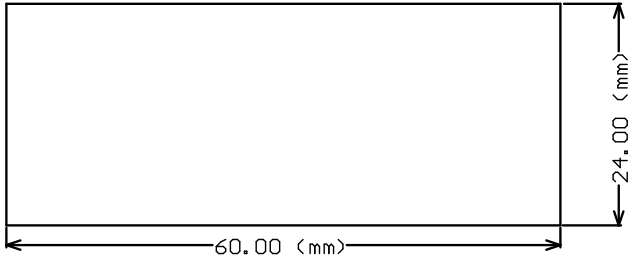
Symbol	Quantity	Finished Hole Size	Plated	Hole Type	Drill Layer Pair	Hole Length
✕	64	12.00mil (0.305mm)	PTH	Round	Top Layer - Bottom Layer	-
▽	2	39.37mil (1.000mm)	PTH	Slot	Top Layer - Bottom Layer	98.43mil (2.500mm)
✱	2	43.00mil (1.092mm)	NPTH	Round	Top Layer - Bottom Layer	-
□	4	66.93mil (1.700mm)	NPTH	Round	Top Layer - Bottom Layer	-
	72 Total					

Slot definitions : Routed Path Length = Calculated from tool start centre position to tool end centre position.
Hole Length = Routed Path Length + Tool Size = Slot length as defined in the PCB layout

TOLERANCE
+0/-12 MILS FOR 12 MILS DRILL
+/- 3 MILS FOR PTH AND SLOT
+/- 2 MILS FOR NPTH



ALL ARTWORK VIEWED FROM TOP SIDE	BOARD #:AMPS149	REV: A	SUN REV: Not in version control
LAYER NAME = Drill Drawing	TID #: N/A		
PLOT NAME = Drill Drawing	GENERATED : 8/6/2021 3:41:38 PM		TEXAS INSTRUMENTS



ALL ARTWORK VIEWED FROM TOP SIDE	BOARD #:AMPS149	REV: A	SUN REV: Not in version control
LAYER NAME =	TID #: N/A		
PLOT NAME = Board Dimensions	GENERATED : 8/6/2021 3:41:39 PM	TEXAS INSTRUMENTS	