

Bosch TAS2505-Q1 THD+N test result

Imelda Zhang

Analog input THD+N

Follow BU instruction but Bosch doesn't have AUX-0025

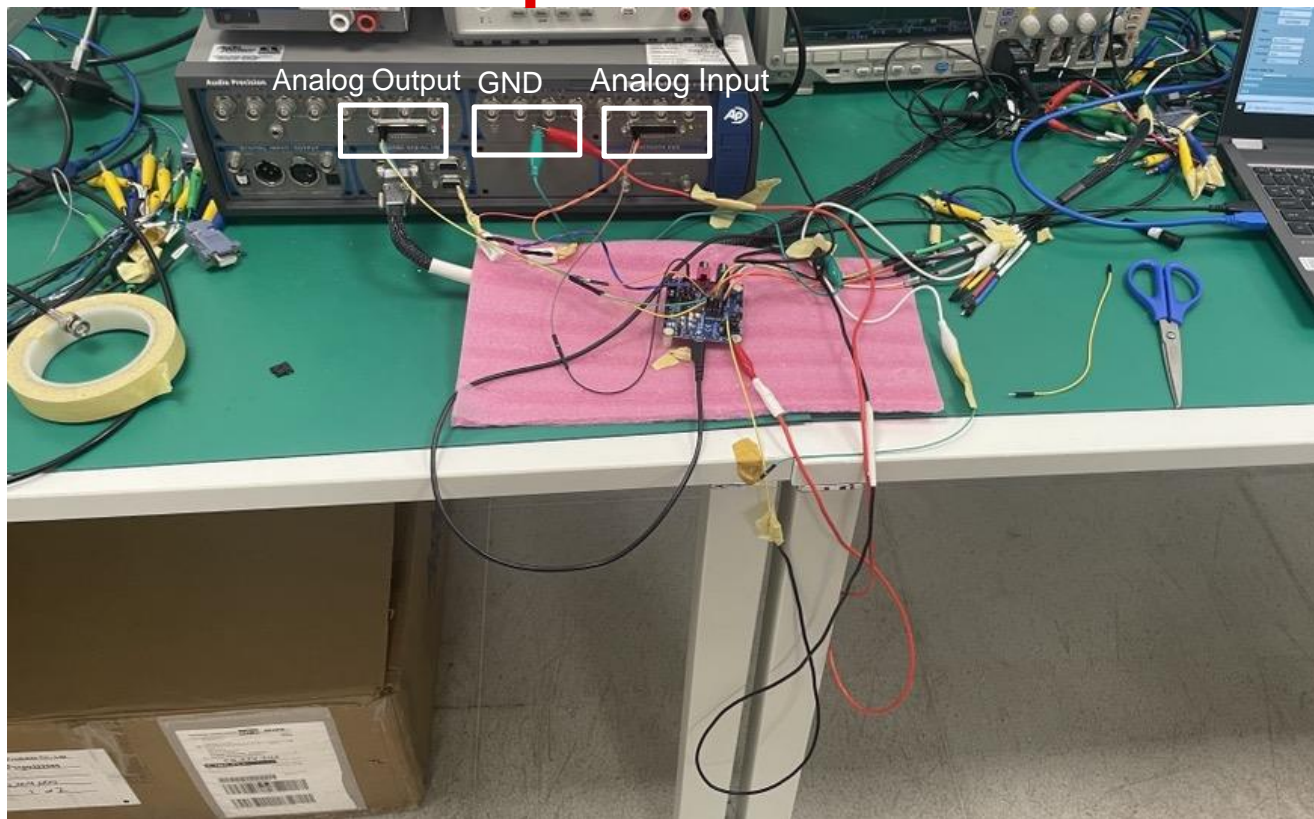


With 40ohm load the THD+N=0.497% with 1.369 Vrms

Without load the THD+N=0.02% with 1.369Vrms

It seems the THD+N is not from noise

Hardware setup



The AP GND, TAS2505 GND and Power GND are all connected

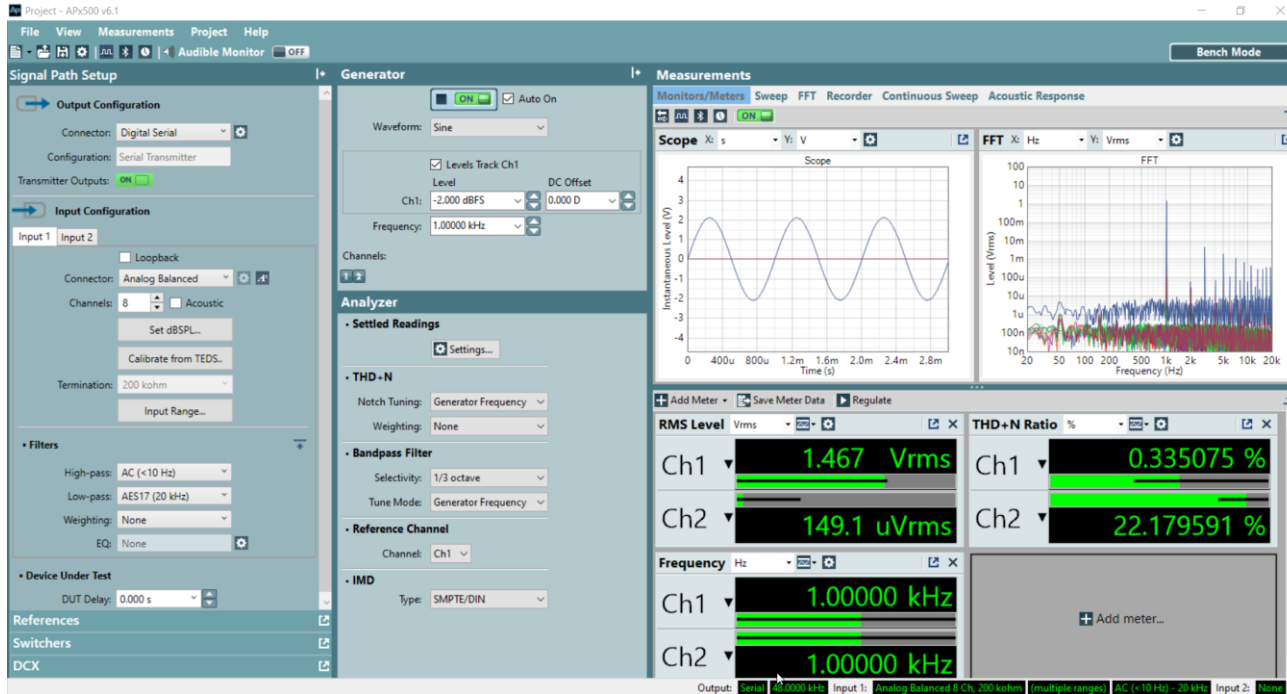
The Analog output and input all are twisted

The AP output and input wire don't use the standard wire. Will this affect the test result?

Is there any suggestions?

Digital input THD+N

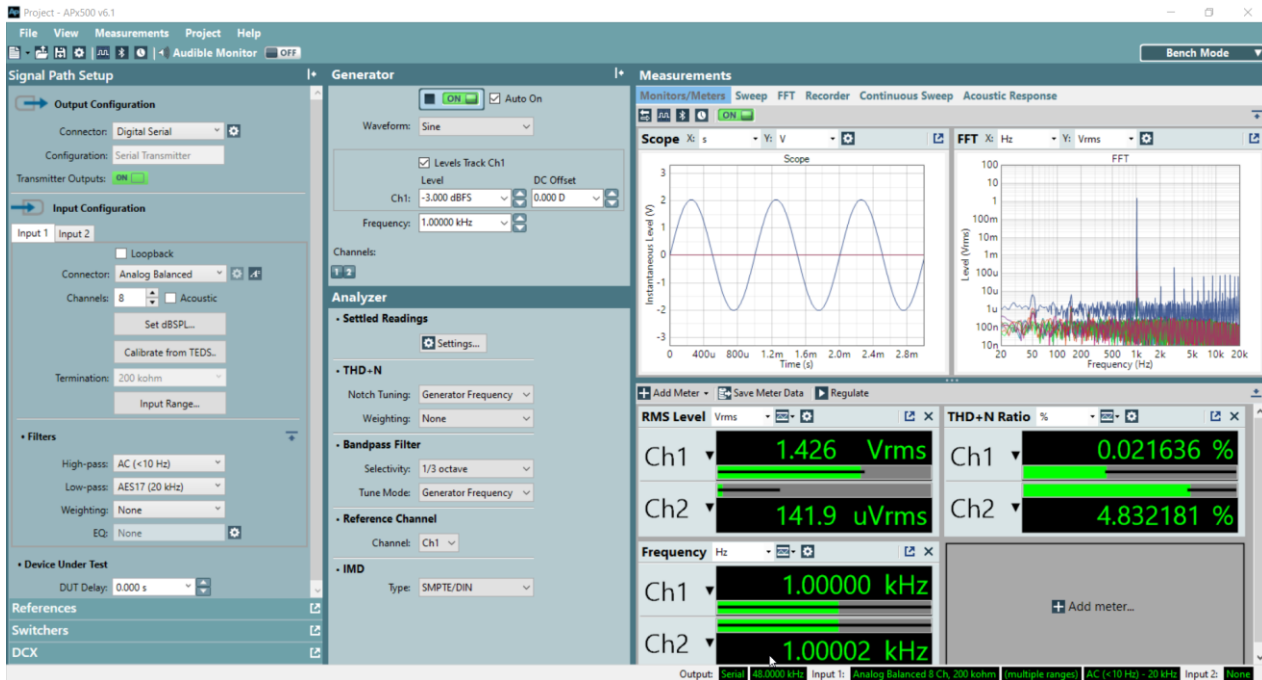
Follow BU instruction but Bosch doesn't have AUX-0025



With 40ohm load the THD+N=0.335% with 1.467 Vrms

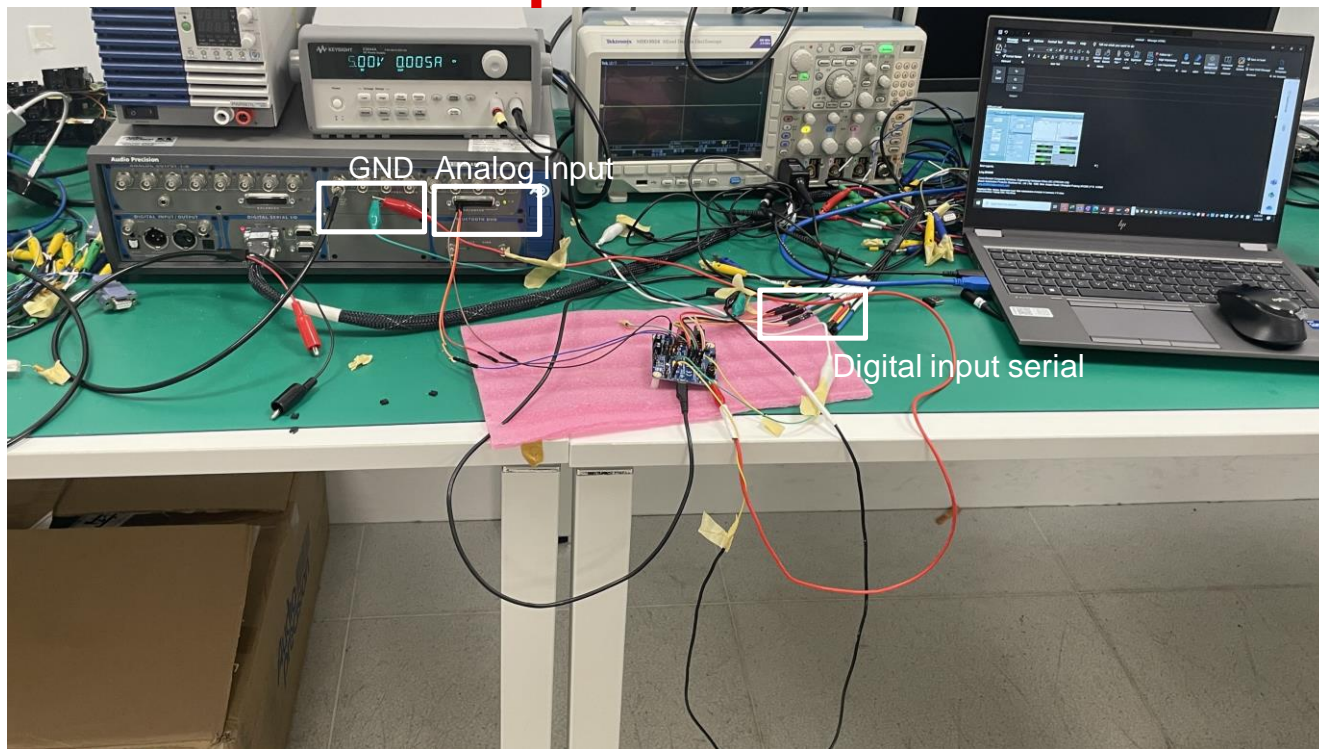
Digital input THD+N

Follow BU instruction but Bosch doesn't have AUX-0025



Without 40ohm load the THD+N=0.0216% with 1.426 Vrms

Hardware setup



The AP GND, TAS2505 GND and Power GND are all connected

The Analog input all are twisted

The AP analog output wire don't use the standard wire. Will this affect the test result?

Is there any suggestions?