

Schematics and Printed-Circuit Board

This chapter presents the DEM-DAI1802 printed-circuit board and the DEM-DAI1802 schematics.

Topic	Page
2.1 DEM-DAI1802 Printed-Circuit Board	2-2
2.2 DEM-DAI1802 Schematics	2-5

2.1 DEM-DAI1802 Printed-Circuit Board

Figure 2-1. DEM-DAI1802 Silkscreen

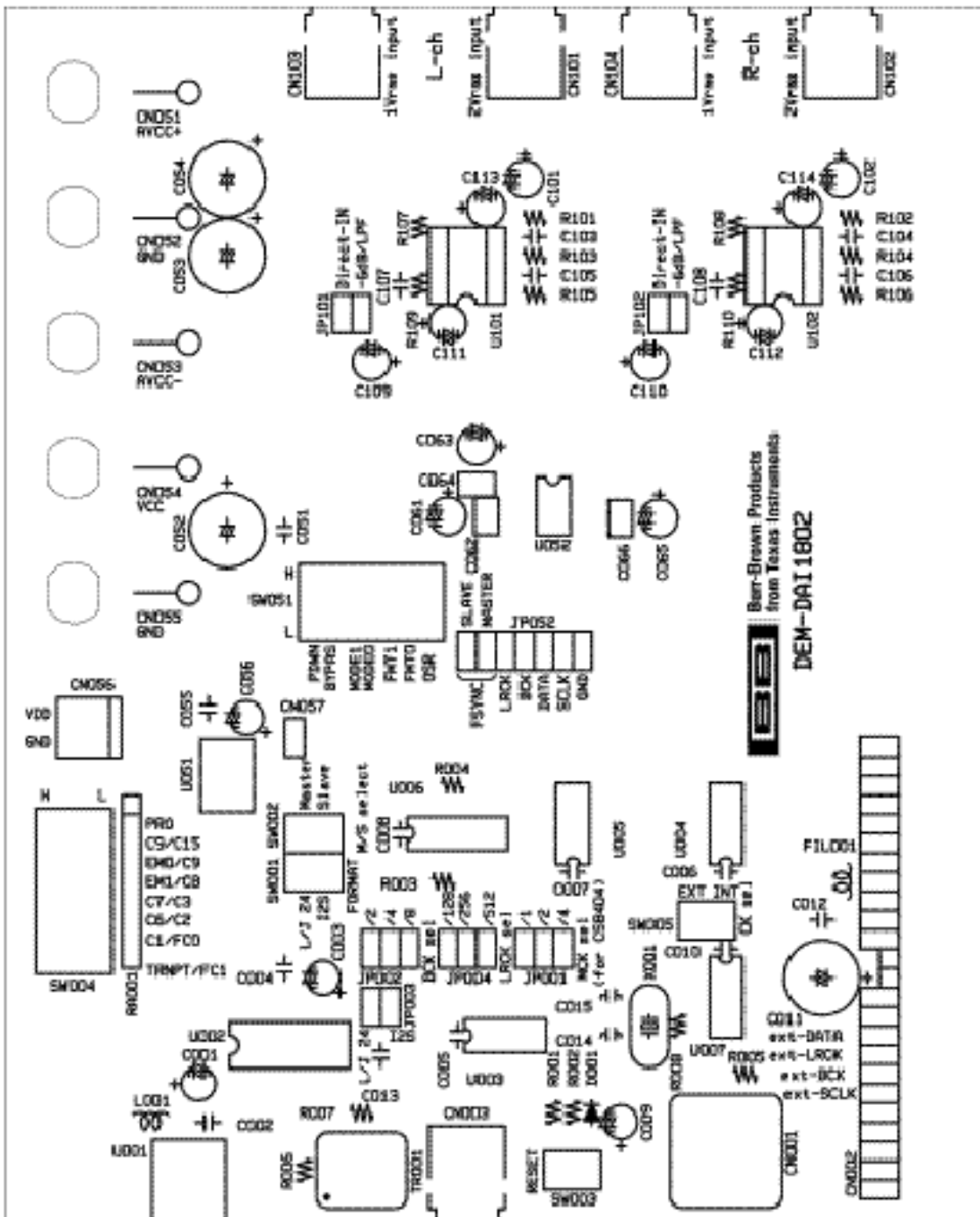


Figure 2-2. DEM-DAI1802 Top View

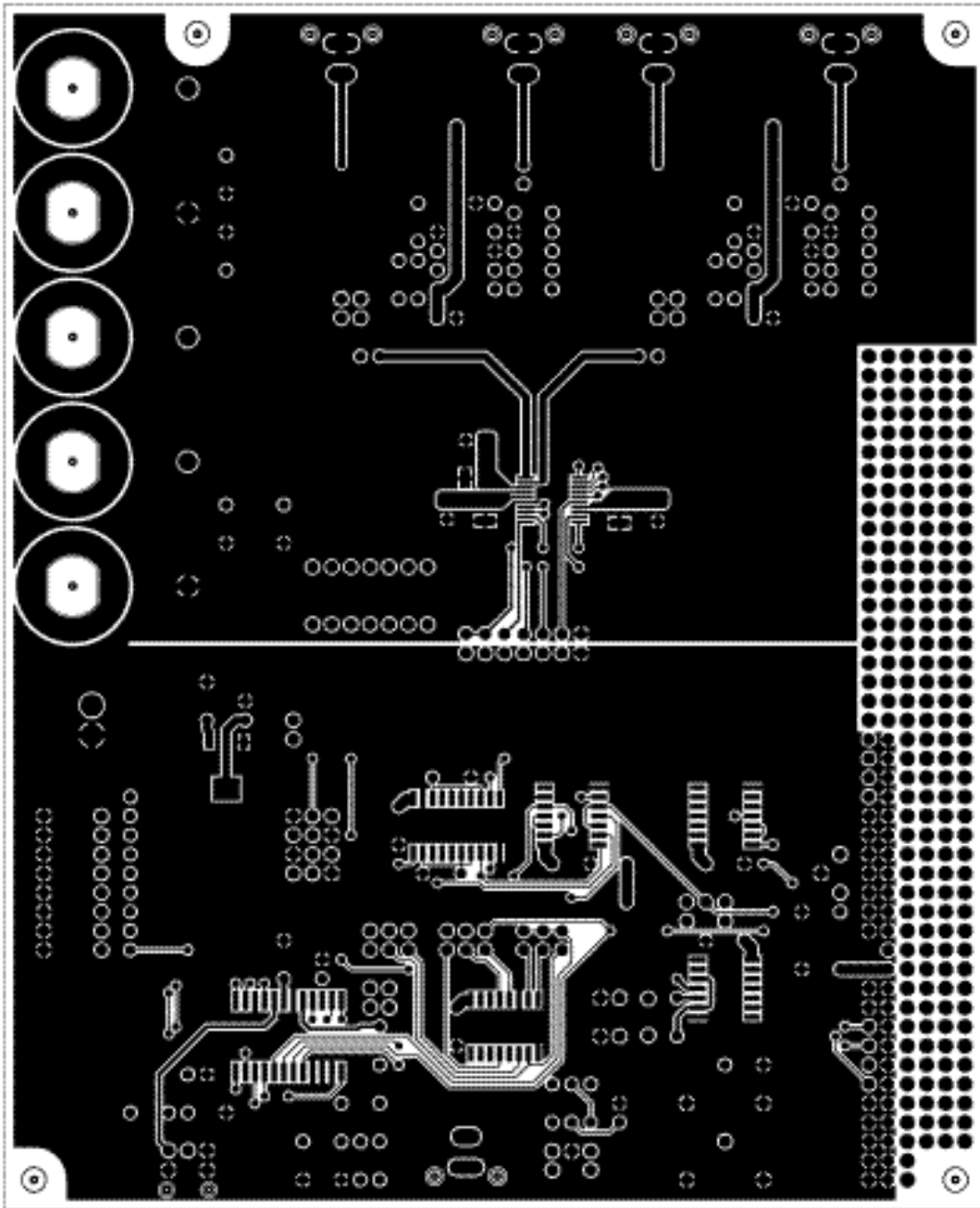
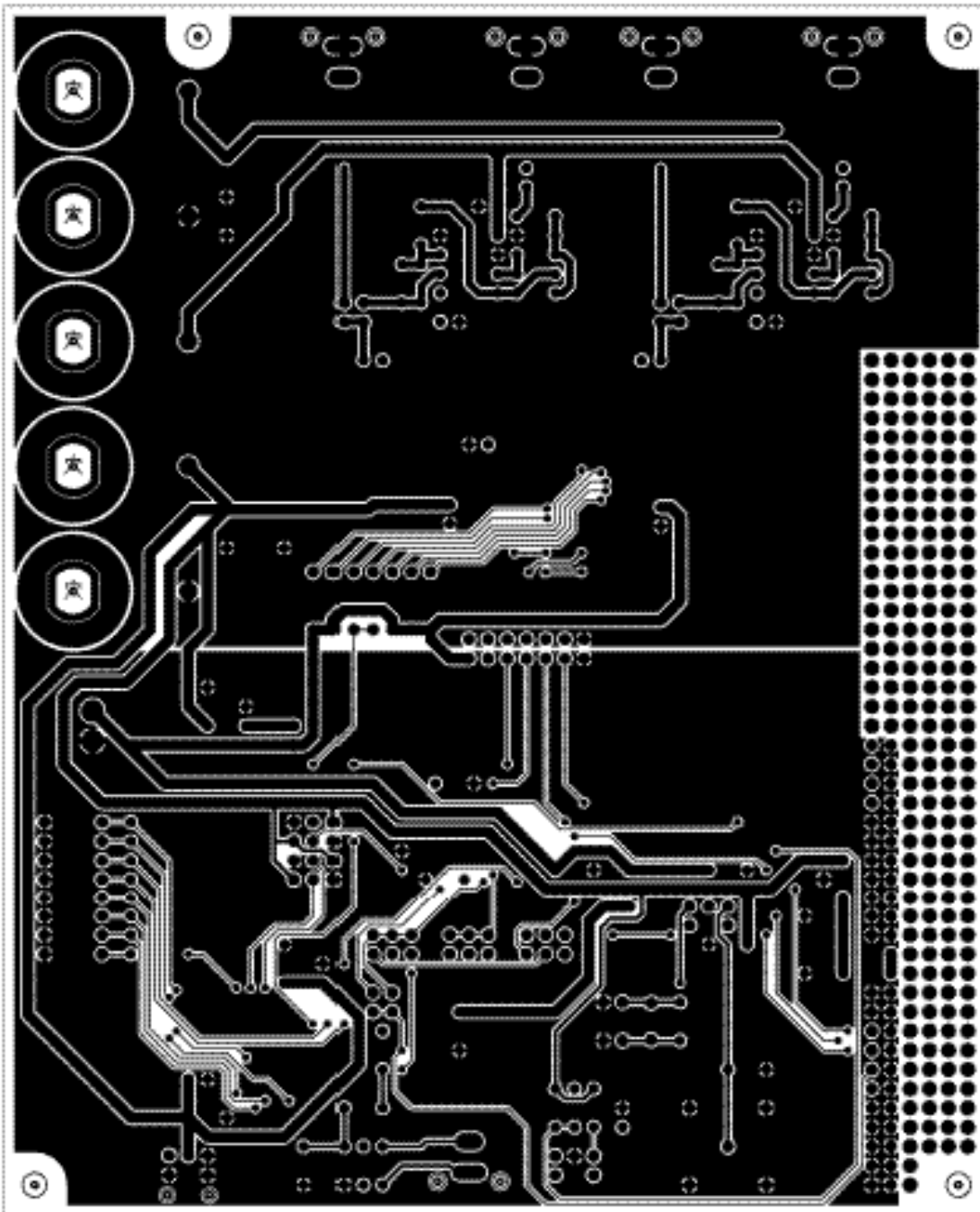


Figure 2–3. DEM-DAI1802 Bottom View



2.2 DEM-DAI1802 Schematics

Figure 2–4. DEM-DAI1802 Analog Section Schematic Diagram

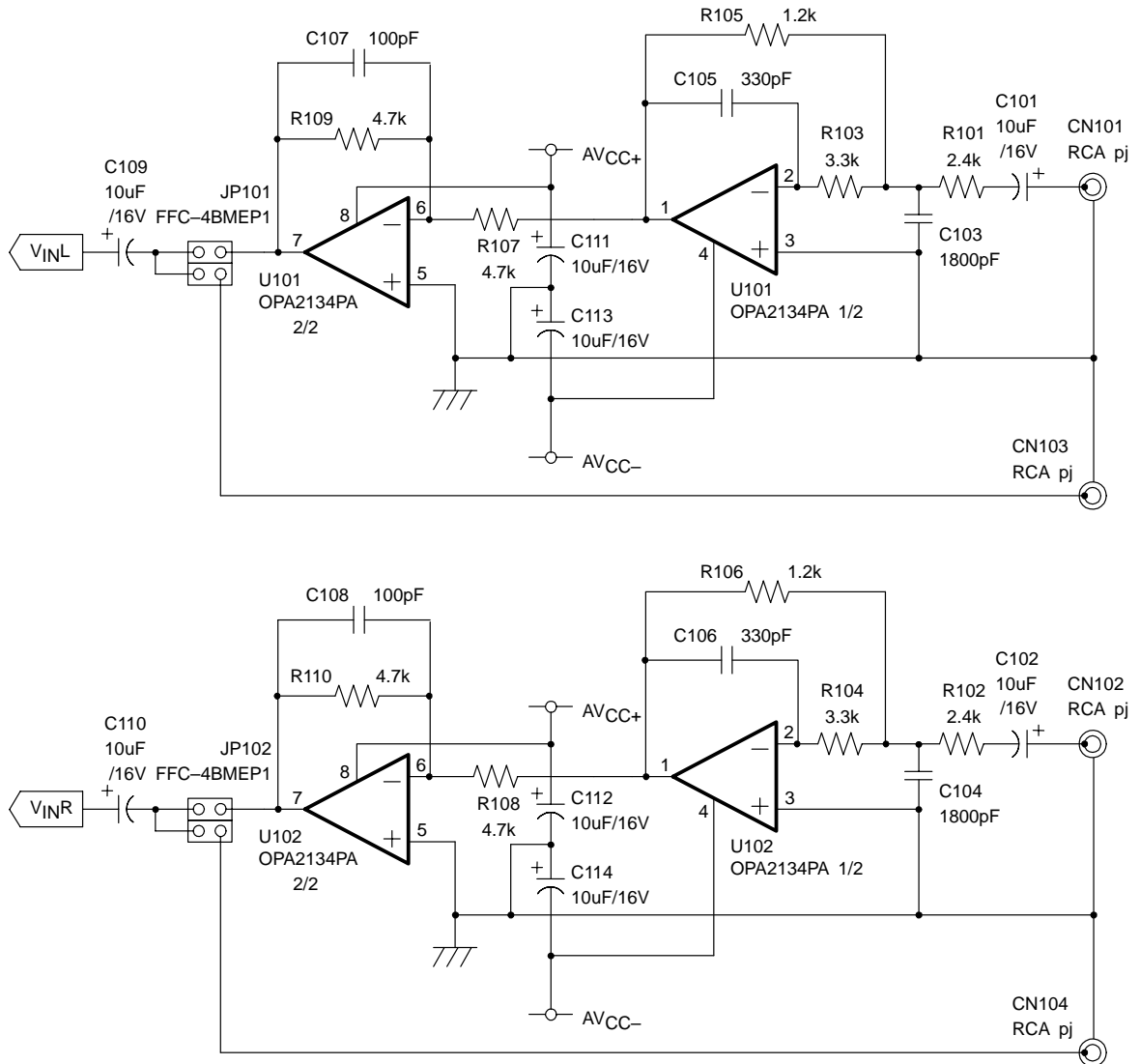


Figure 2–5. DEM-DAI1802 A/D Converter Section Schematic Diagram

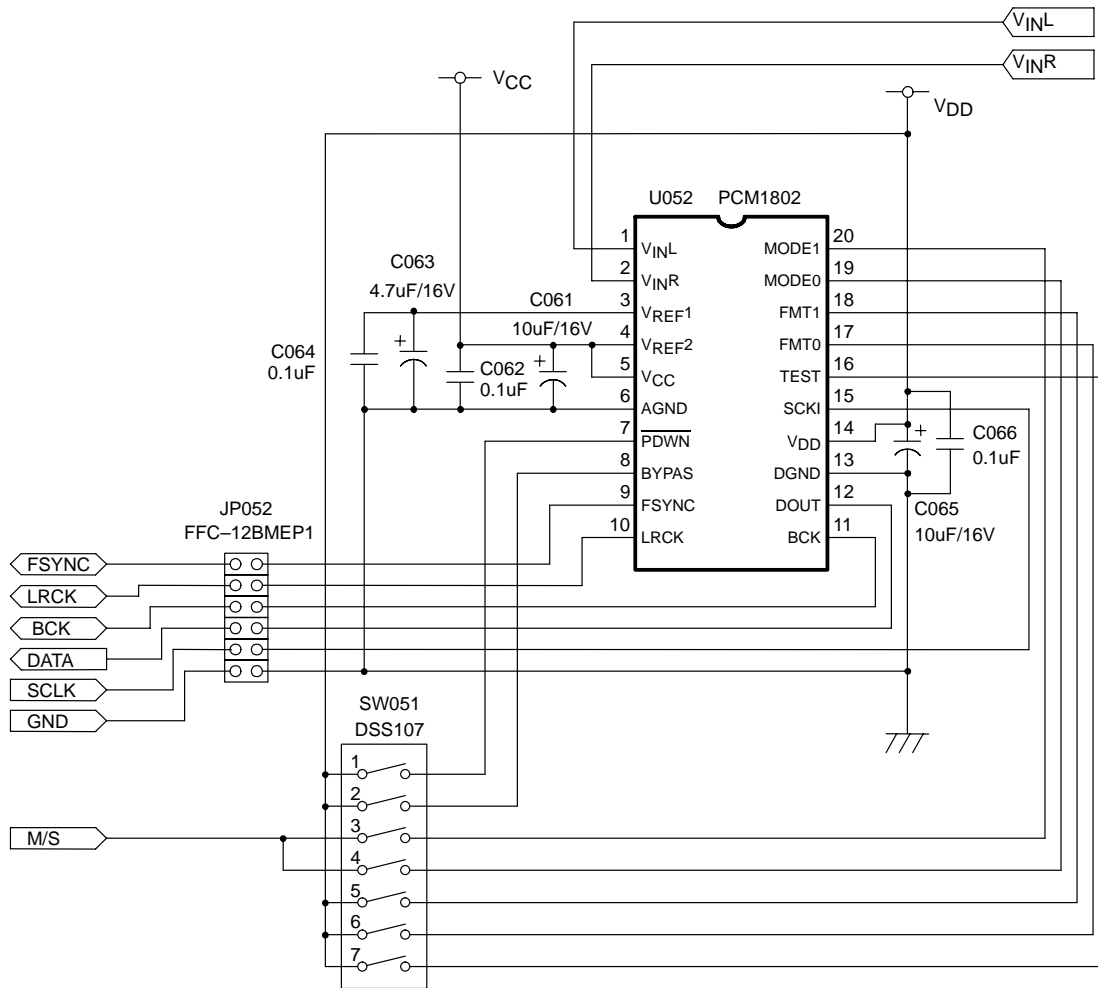


Figure 2–6. DEM-DAI1802 Regulator and Connector Schematic Diagram

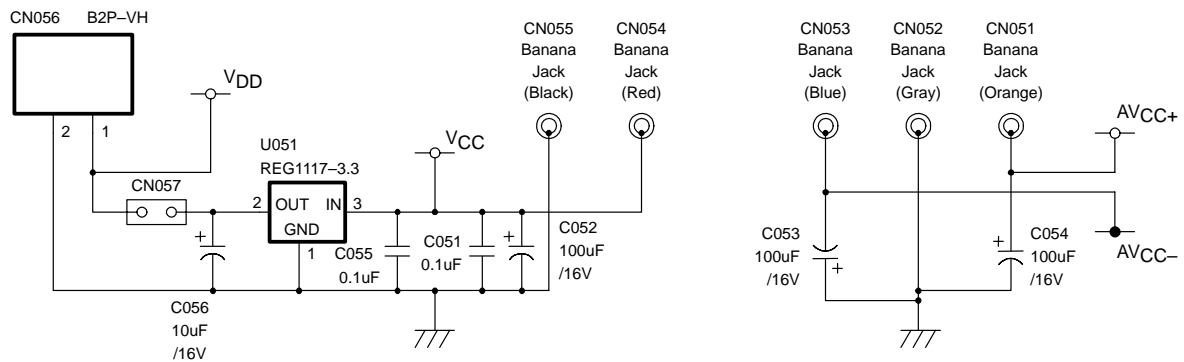


Figure 2-7. DEM-DAI1802 Digital Section (Digital Audio Interface) Schematic Diagram

