

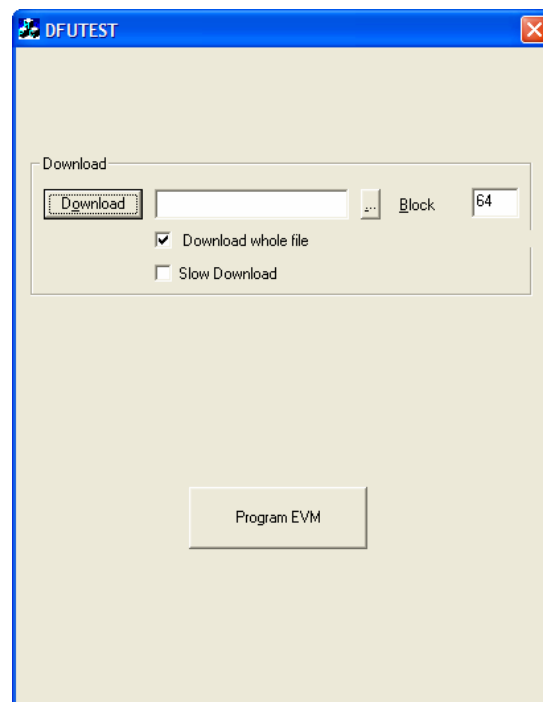
Appendix A: Firmware Update Procedure

Download

Download the latest USB firmware files.

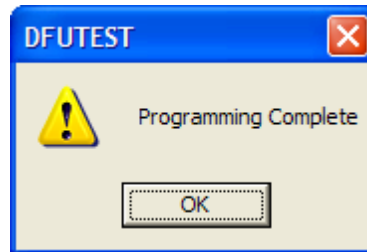
Programming:

1. Remove the EEPROM Jumper from the EVM, (Refer to Section 6 for the EEPROM Jumper location)
2. Connect the USB cable to the EVM.
3. If Windows asks for a driver, ask it to search in:
“\USBfirmware_VXXXX_Home\dfu_driver”. (xxxx denotes the newest version)
4. Browse to “\USBfirmware_VXXXX_Home”.
5. Double click “DFUTEST.exe”.
6. A window similar as the one below should appear. If a “No DFU devices found” message appears, make sure the EEPROM Jumper on the EVM is not installed, re-connect the USB cable and restart the DFUTEST. If it continues to fail, repeat the installation procedure.



7. Click “Program EVM”.
8. Browse to the “\USBfirmware_VXXXX_Home\image” folder and select “DFUEE.bin”. Click “Open”.
9. Insert the EEPROM Jumper on the daughterboard, click “OK”.
10. A “Download Completed” message should appear. Click “OK”.

11. A “Device was successfully reset” message should appear. **Wait about 3 seconds until Windows recognizes the device**, failure to do so will show an error message. If an error message appears, restart the programming procedure. Click “OK”.
12. A “Device Detach call succeeded” message should appear. **Wait about 3 seconds until Windows recognizes the device**, failure to do so will show an error message. If an error message appears, restart the programming procedure. Click “OK”.
13. **If a “Found new hardware wizard” appears, select “No, not at this time” and click “Next >”. If the window shows “TI DFU class driver”, re-follow steps 9-12 of the Installation Procedure.**
14. Browse to the “\USBfirmware_VXXXX_Home\image” folder and select “USB-AudioEVMXXXX_441KHZ.BIN” Click “Open”.
15. Click OK two times. The third window should look like this:



16. **If a “Found new hardware wizard” appears, select “No, not at this time” and click “Next >”. If this window shows “USB-AudioEVM”, select “Install the software automatically (Recommended)” and click “Next >” and click “Finish”.**
17. **CLOSE THE DFUTEST PROGRAM.**