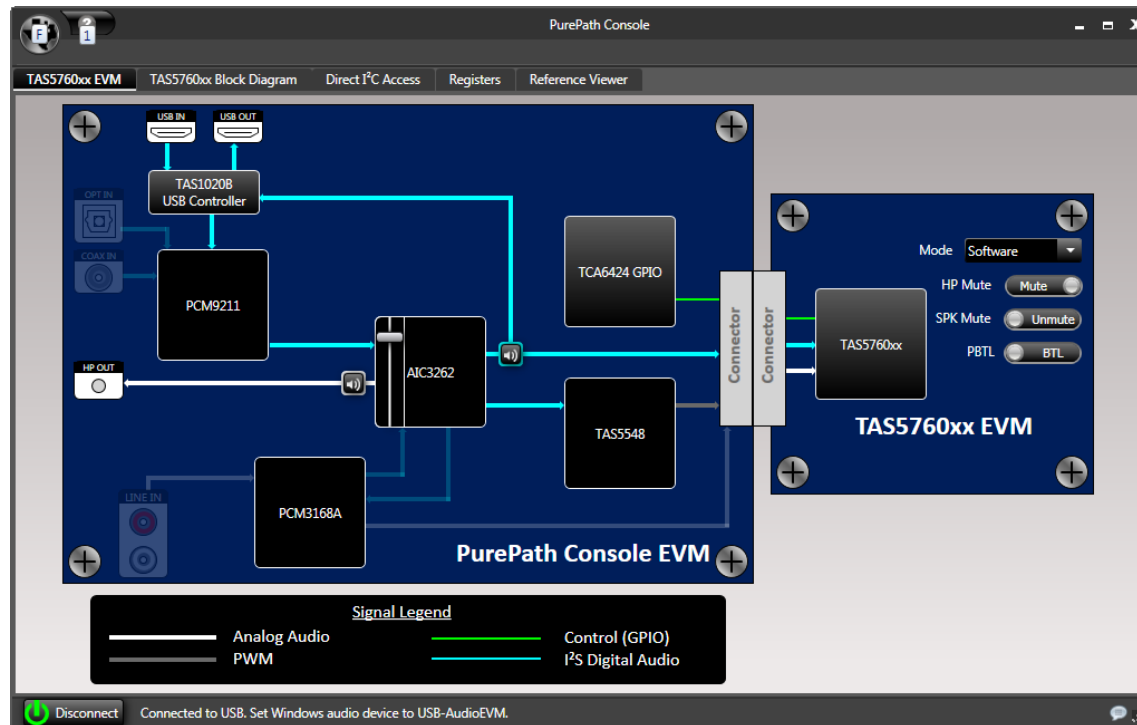


# Step 1

- a) Connect a TAS5760xxEVM to a PPCMB.
- b) Connect a speaker to OUTA terminals on the TAS5760xxEVM.
- c) Connect a PSU to the TAS5760xxEVM and turn on the power. 5-V and 3.3-V LEDs (Yellow) are illuminated. The USB Lock LED (Blue) is also illuminated.
- d) Plug in a USB cable from your PC to the PPCMB.

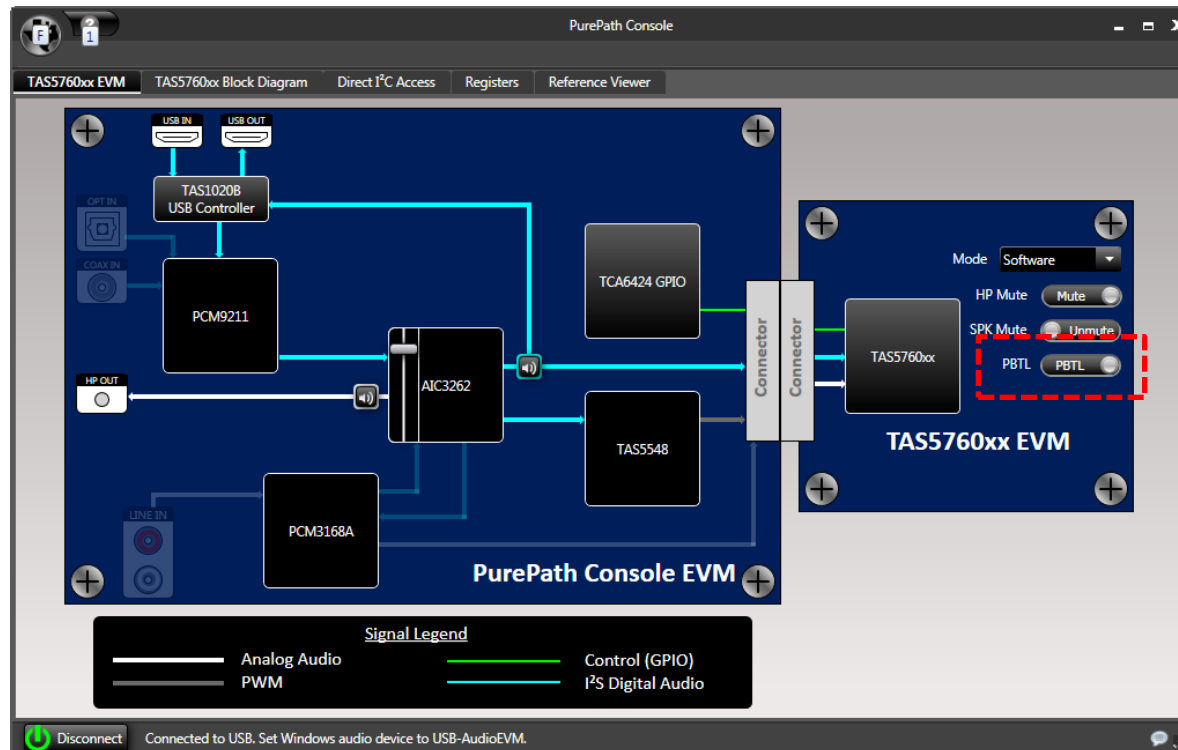
# Step 2

- a) Launch TAS5760xxEVM GUI in your PC.
- b) Play a music file in your PC and check if you can hear music playing from the speaker connected.
  1. If you can hear music playing, continue to Step 3.
  2. If you cannot hear anything, it is likely that TAS5760 device is already in PBTL mode (a possible software bug!). Change your speakers connections to PBTL connections and check again if you can hear music playing. I would suggest you do a power cycle then and start over from Step 1.



# Step 3

- a) Choose PBTL as the screenshot below shows.
- b) Play music again and check if you can hear music playing from the speaker connected (Still **BTL** connections).
  1. If you cannot hear anything, change your speakers connections to PBTL mode and check again if you can hear music playing. If you can, TAS5760 is now in PBTL mode. **Done!**
  2. If you can still hear music, continue to Step 4.



# Step 4

- Go to Registers Page (See the screenshot below).
- Double click the Bit 0 of Register 1 (Power Control) twice. The Bit 0 will be changed to 0 and then back to 1 again.
- Change your speakers connections to PBTL connections and play music.
  - If you can hear music, TAS5760 is now in PBTL mode. **Done!**
  - If you cannot, contact me again.

PurePath Console

TAS5760xx EVM TAS5760xx Block Diagram Direct I<sup>2</sup>C Access **Registers** Reference Viewer

Device: TAS5760

Sub Address	Register Name	Dec Value	Hex Value	Bit7	Bit6	Bit5	Bit4	Bit3	Bit2	Bit1	Bit0
0x00	Device Identification	0	0x00	0	0	0	0	0	0	0	0
0x01	Power Control	253	0xFD	1	1	1	1	1	1	0	1
0x02	Digital Control	20	0x14	0	0	0	1	0	1	0	0
0x03	Volume Control Configuration	128	0x80	1	0	0	0	0	0	0	0
0x04	Left Channel Volume Control	255	0xFF	1	1	1	1	1	1	1	1
0x05	Right Channel Volume Control	255	0xFF	1	1	1	1	1	1	1	1
0x06	Analog Control	217	0xD9	1	1	0	1	1	0	0	1
0x07	Reserved	0	0x00	0	0	0	0	0	0	0	0
0x08	Error Status Register	0	0x00	0	0	0	0	0	0	0	0
0x09	Reserved	0	0x00	0	0	0	0	0	0	0	0
0x0A	Reserved	0	0x00	0	0	0	0	0	0	0	0
0x0B	Reserved	0	0x00	0	0	0	0	0	0	0	0
0x0C	Reserved	0	0x00	0	0	0	0	0	0	0	0
0x0D	Reserved	0	0x00	0	0	0	0	0	0	0	0
0x0E	Reserved	0	0x00	0	0	0	0	0	0	0	0
0x0F	Reserved	0	0x00	0	0	0	0	0	0	0	0
0x10	Digital Clipper Control 2	255	0xFF	1	1	1	1	1	1	1	1
0x11	Digital Clipper Control 1	252	0xFC	1	1	1	1	1	1	0	0

BitFields Read Only or Reserved 1 Default Value 1 Modified Value

Disconnect Connected to USB. Set Windows audio device to USB-AudioEVM.