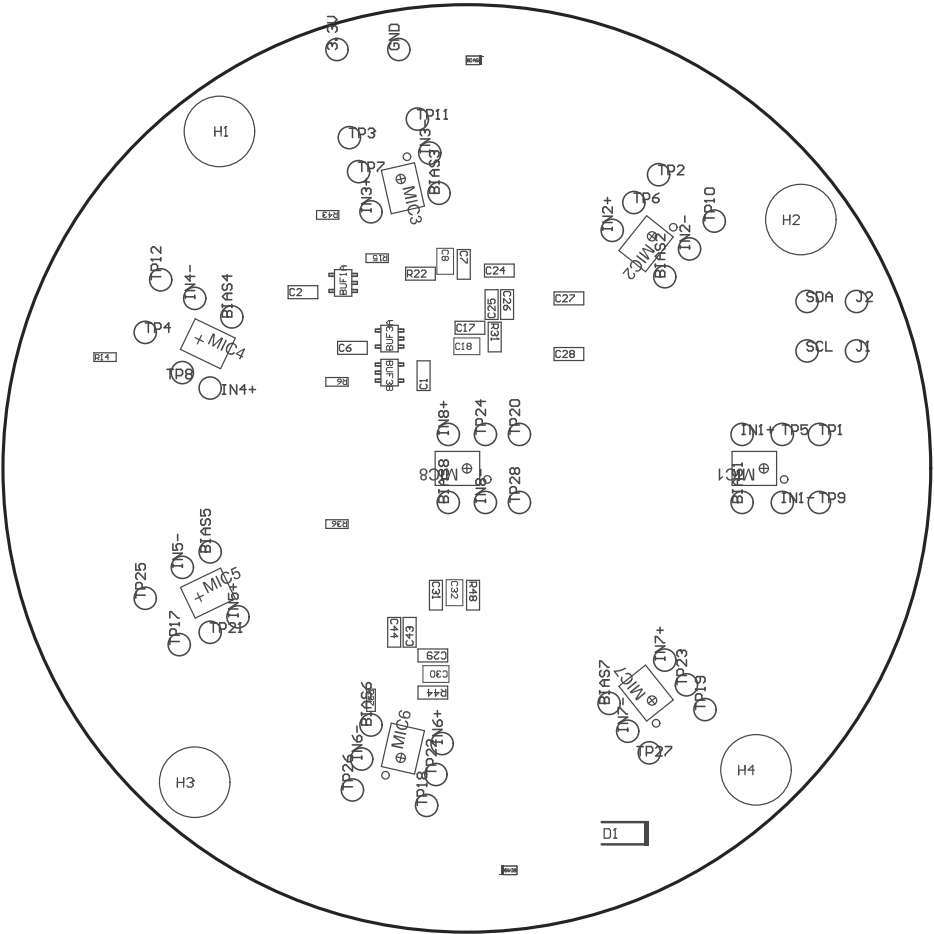
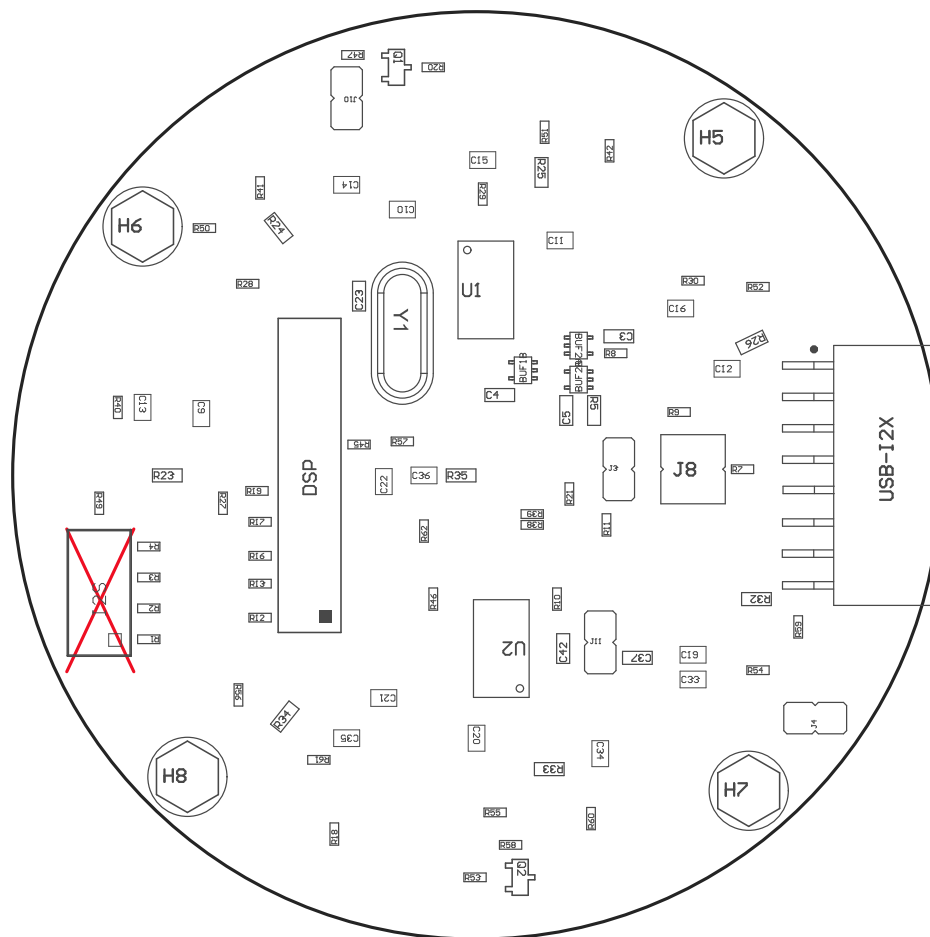


Z22 ■These assemblies are ESD sensitive, ESD precautions shall be observed.
Z23 ■These assemblies must be clean and free from flux and all contaminants. Use of no clean flux is not acceptable.
Z24 ■These assemblies must comply with workmanship standards IPC-A-610 Class 2, unless otherwise specified.



| | | | |
|----------------------------------|-----------------------------------|-------------------|--------------------------------|
| PCB VIEWED FROM TOP SIDE | BOARD #: TIDA-01454 | REV: A | SUN REV: Not In VersionControl |
| | | | |
| PLOT NAME = Top Assembly Drawing | GENERATED : 4/12/2017 11:44:33 AM | TEXAS INSTRUMENTS | |



| | | | |
|-------------------------------------|-----------------------------------|-------------------|--------------------------------|
| PCB VIEWED FROM BOTTOM SIDE | BOARD #: TIDA-01454 | REV: A | SUN REV: Not In VersionControl |
| | | | |
| PLOT NAME = Bottom Assembly Drawing | GENERATED : 4/12/2017 11:44:34 AM | TEXAS INSTRUMENTS | |