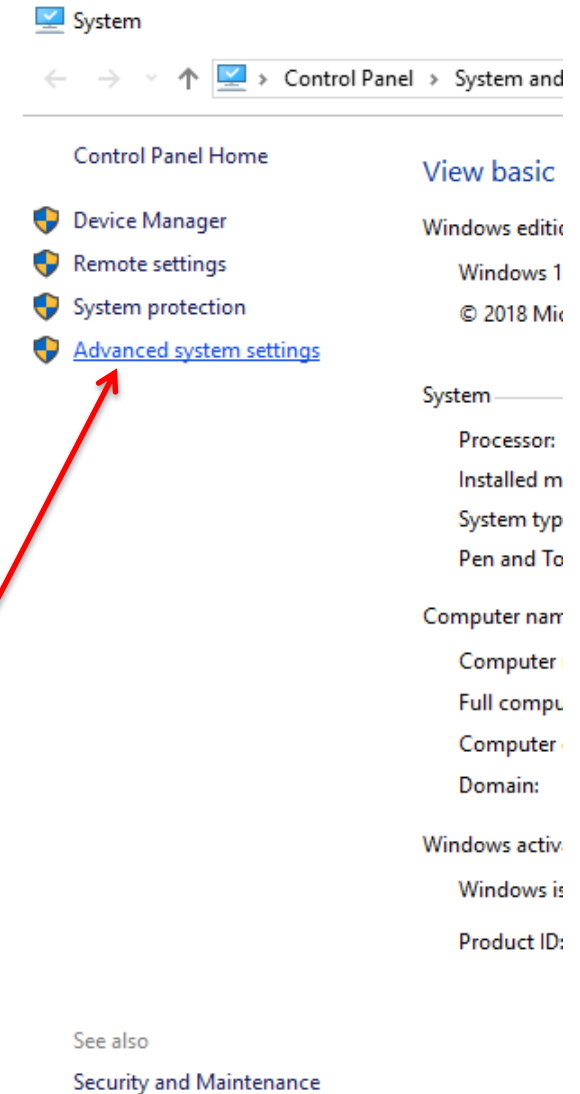
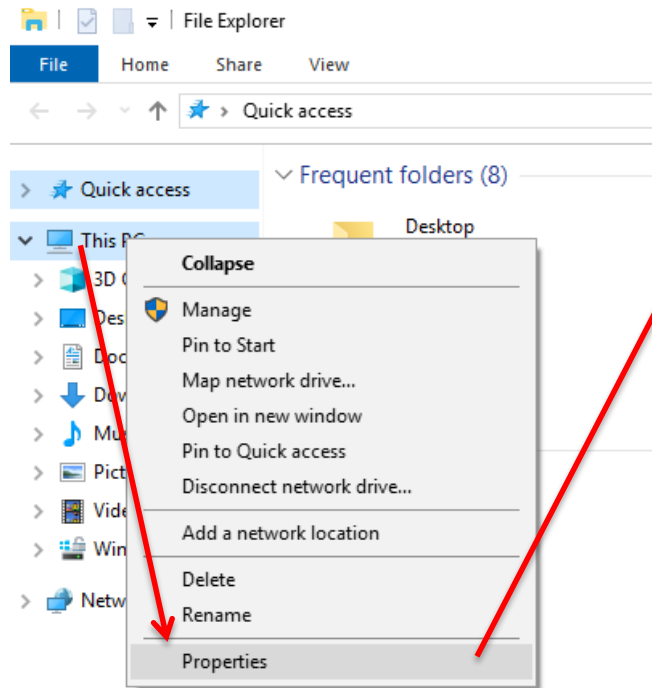


PPC3 – Environment Variables Fix

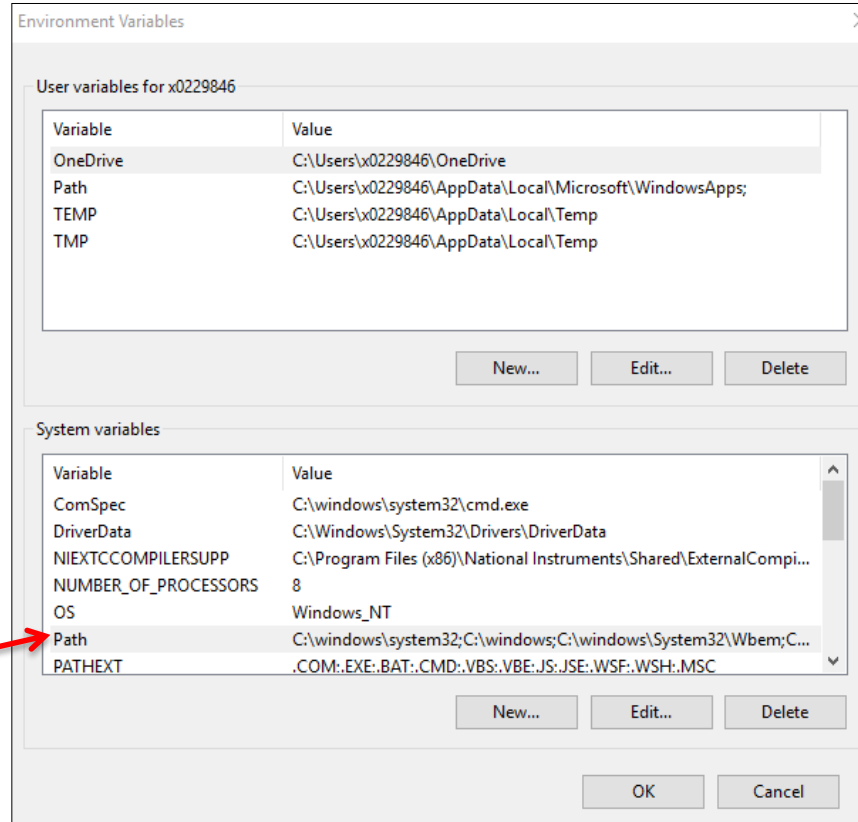
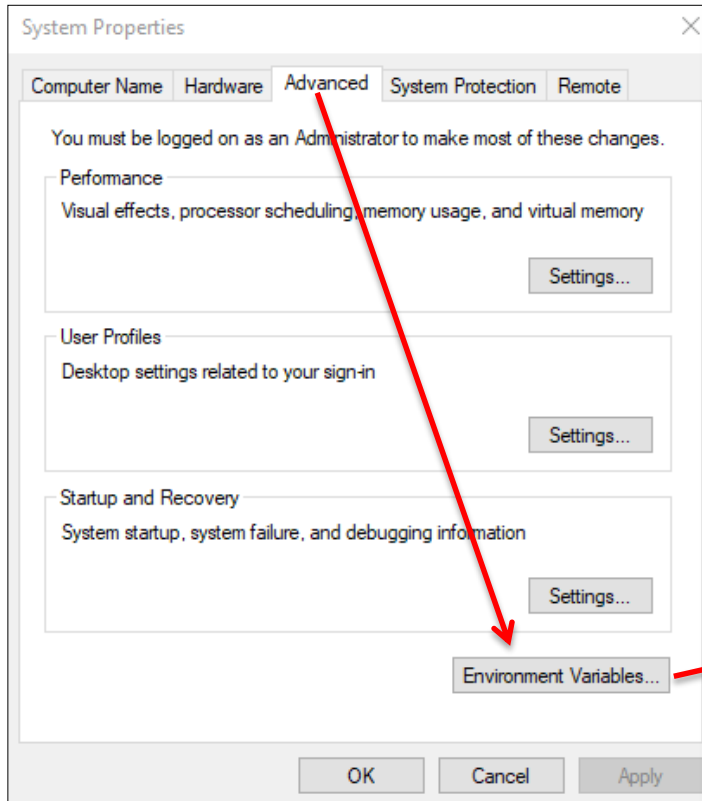
Update Environment Variables – 1

- Open **File Explorer**
- Right-click on **This PC** and **Properties**
- Select **Advanced system settings**



Update Environment Variables – 2

- In **Advanced** tab, select **Environment Variables**
- Under **System variables** look for **Path** and double click on it



Update Environment Variables – 3

- Click on **New** and add the following: C:\Program Files (x86)\MATLAB\MATLAB Compiler Runtime\v716\runtime\win32
- Click **OK** and close all other windows
- **NOTE:** PC restart might be needed so these changes take effect

