

TAS2781 USB Driver and Sound Settings Setup Guide

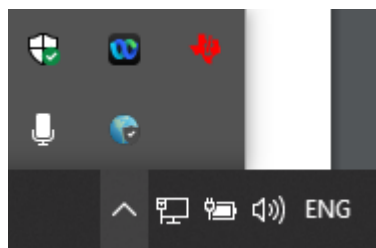


This user guide describes the TAS2781 EVM USB Driver Setup and PC Sound settings

USB Driver Setup:

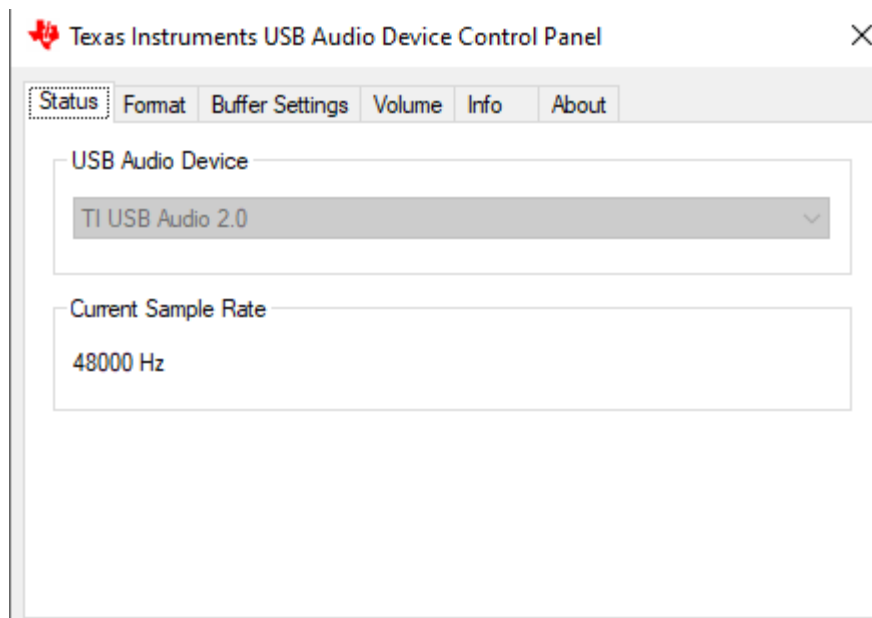
Follow the below instructions to setup the USB Driver:

Open the Texas Instruments USB Audio Device Control Panel found in the system tray.



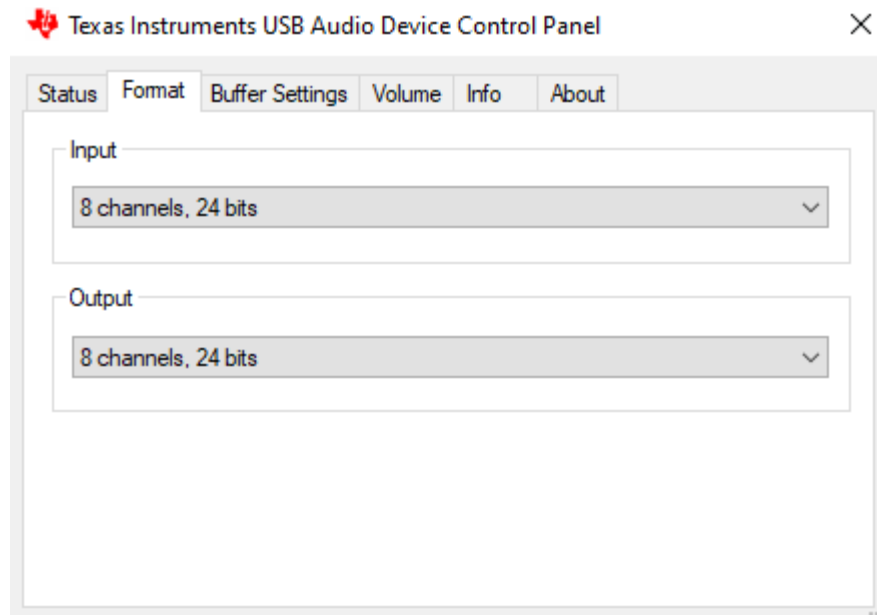
1. Status:

- Ensure USB Audio Device and Sample rate is set as per below image



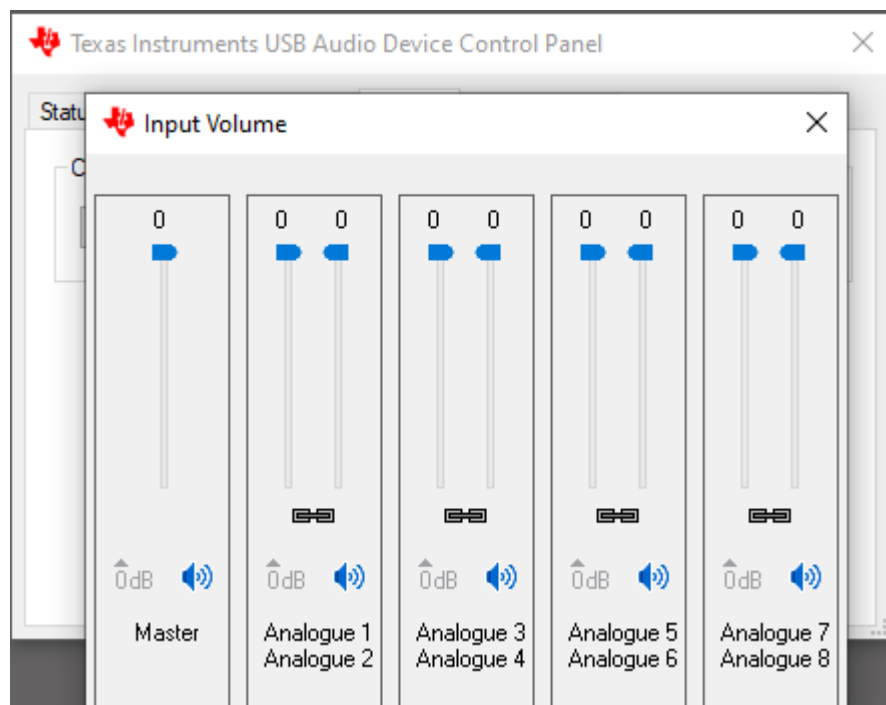
2. Format:

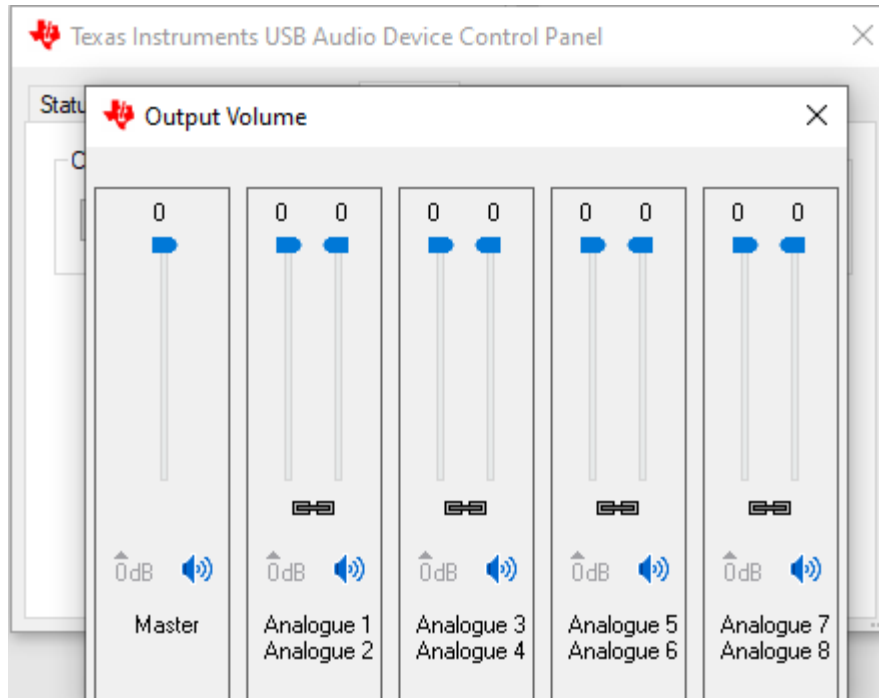
- Set **8 channels**, **24 bits** in both Output and Input



3. Volume:

- Set all the volume levels to maximum in both Output and Input

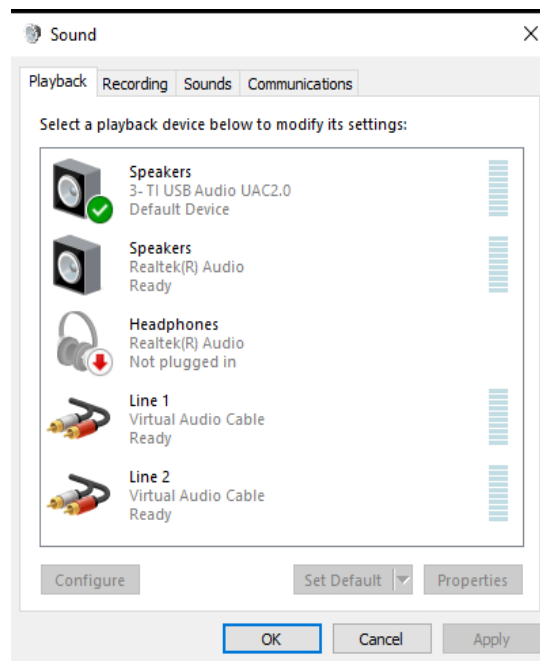




Sound Settings Setup:

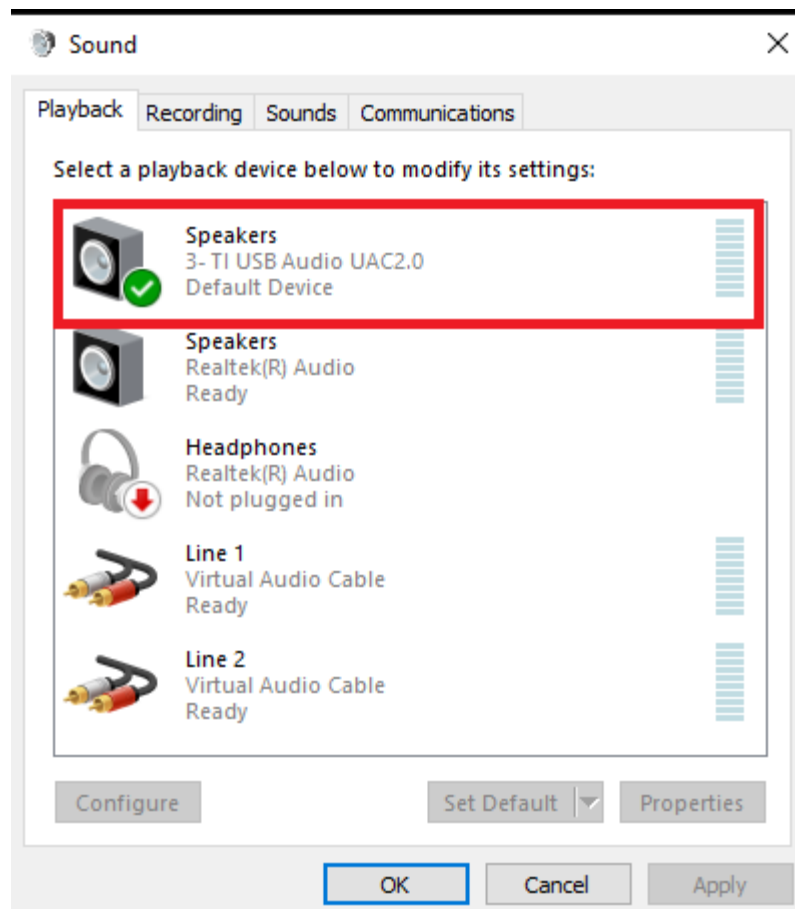
Follow the below instructions to setup the PC Sound Settings in Sound Control Panel

Open Sound Control Panel in your PC.

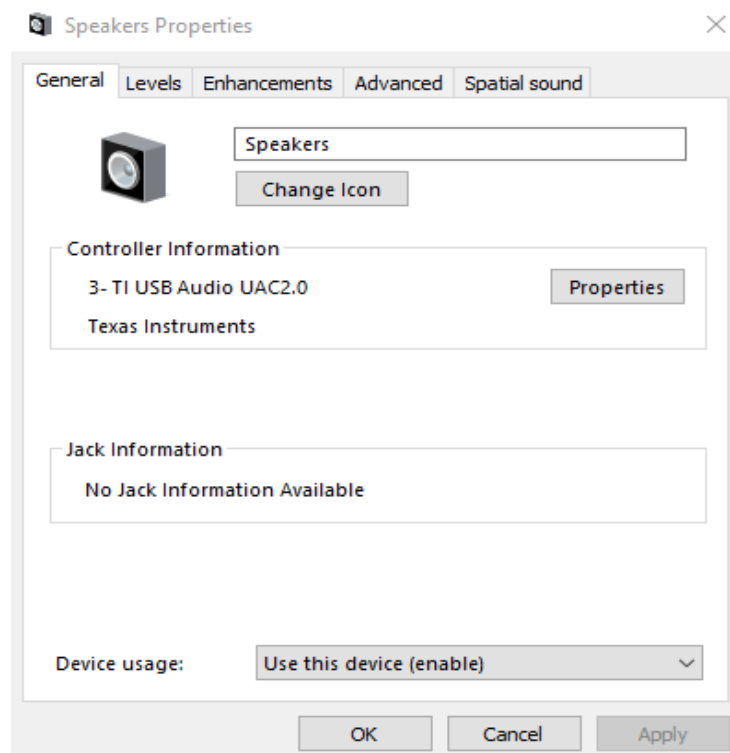


1. Playback:

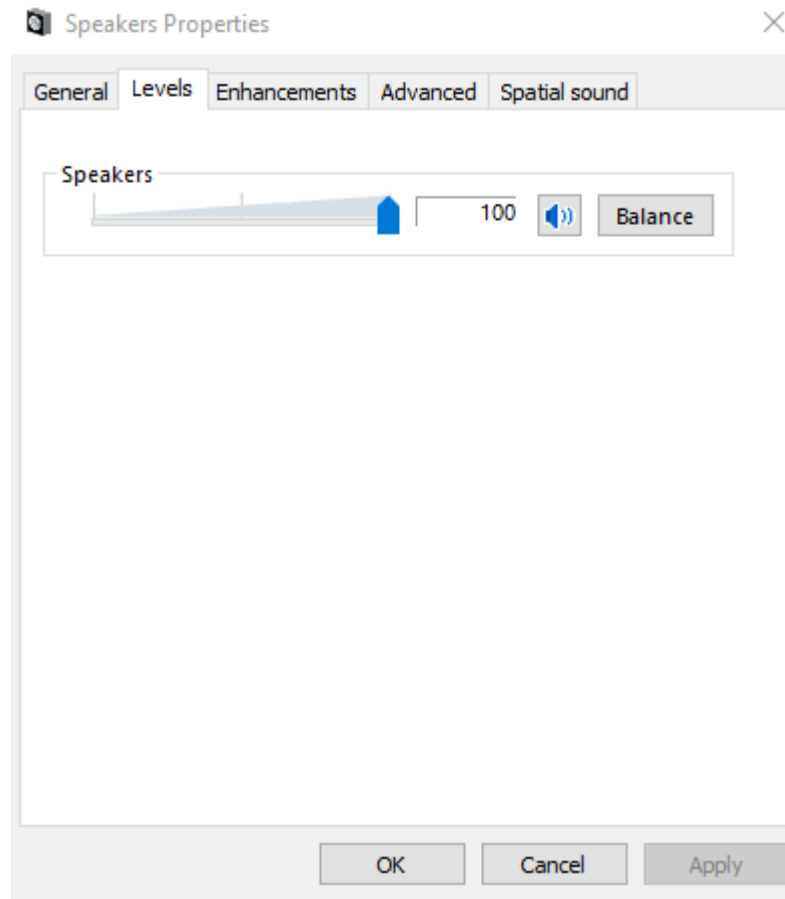
- Select Speakers – TI USB Audio UAC2.0 as default.



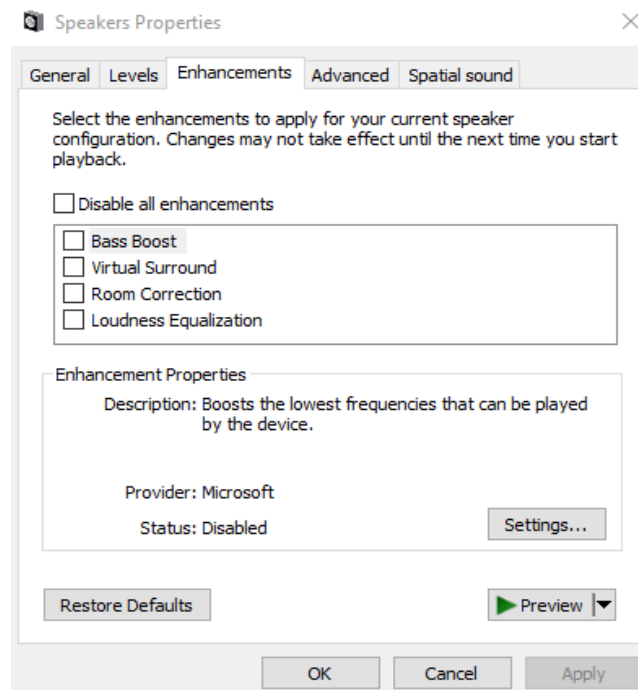
- Double Click on the selected option to open its properties tab.



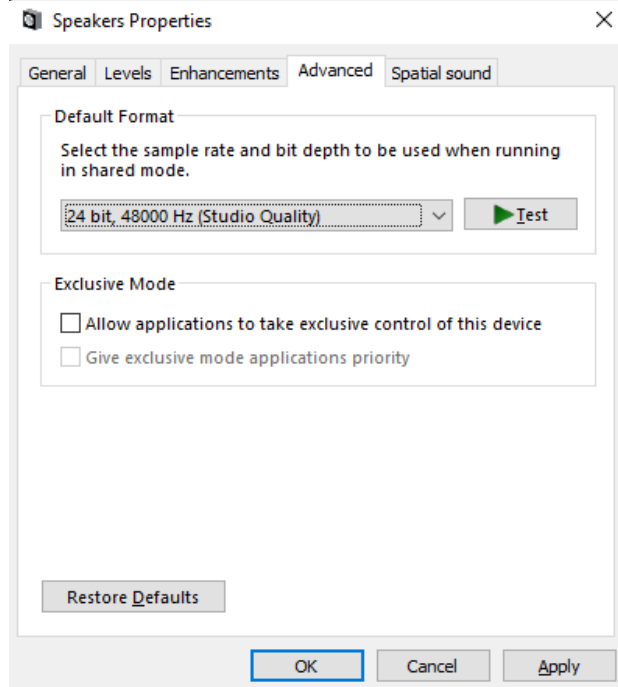
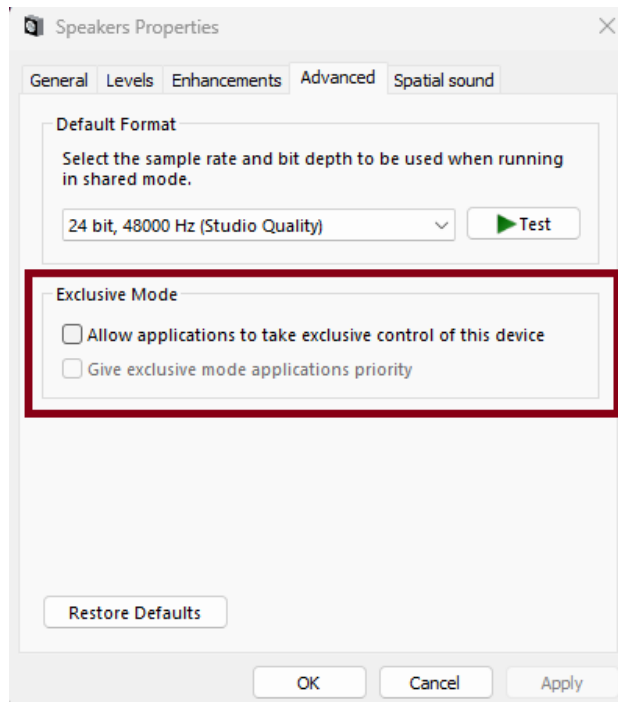
- Levels - Set the Speakers volume level to maximum.



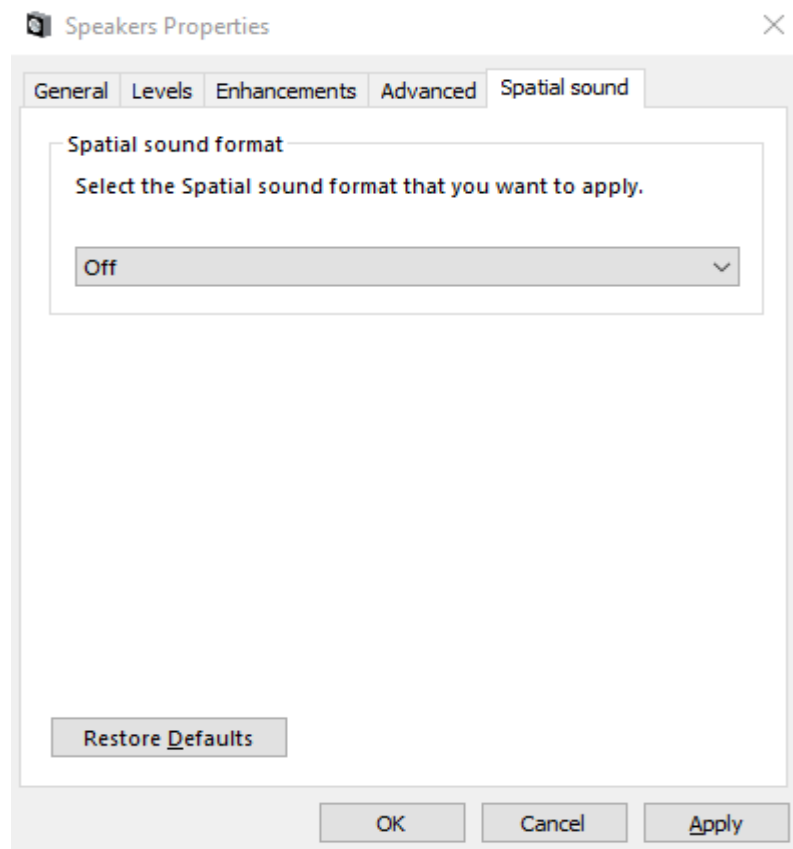
- Enhancements - Disable all enhancements if enabled.



- Advanced - Set Default Format as **24 bit, 48000 Hz (Studio Quality)** and disable exclusive mode.

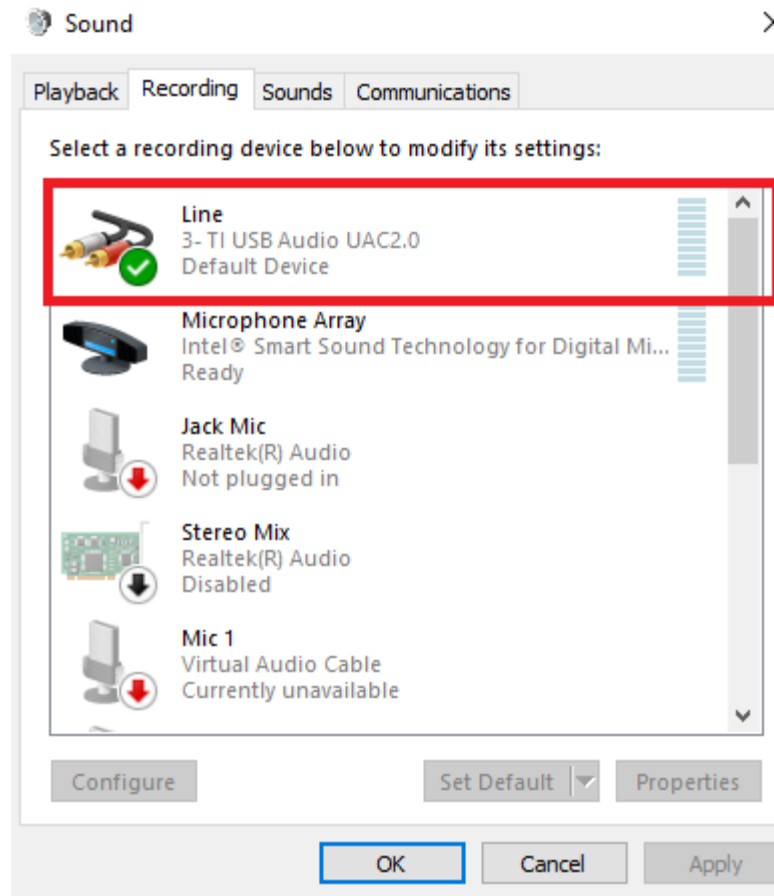


- Spatial sound - Set Spatial sound format to **Off**.

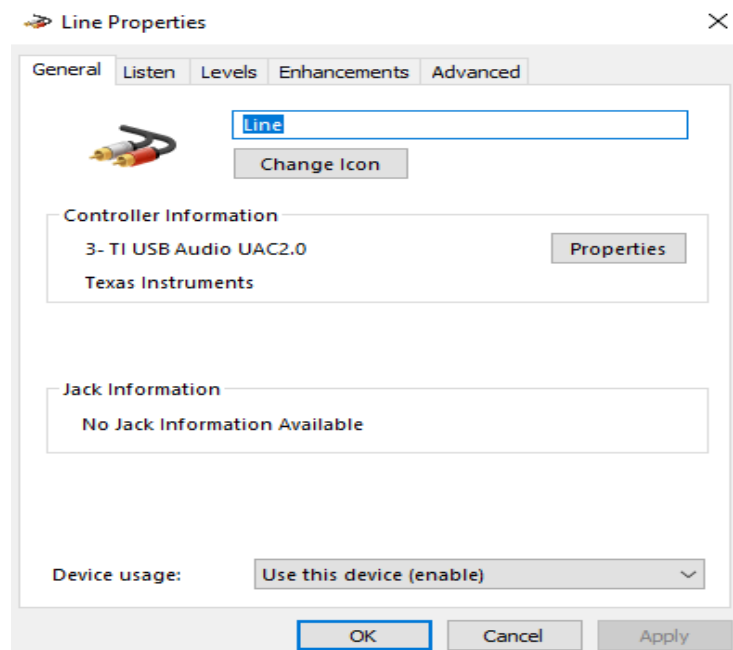


2. Recording:

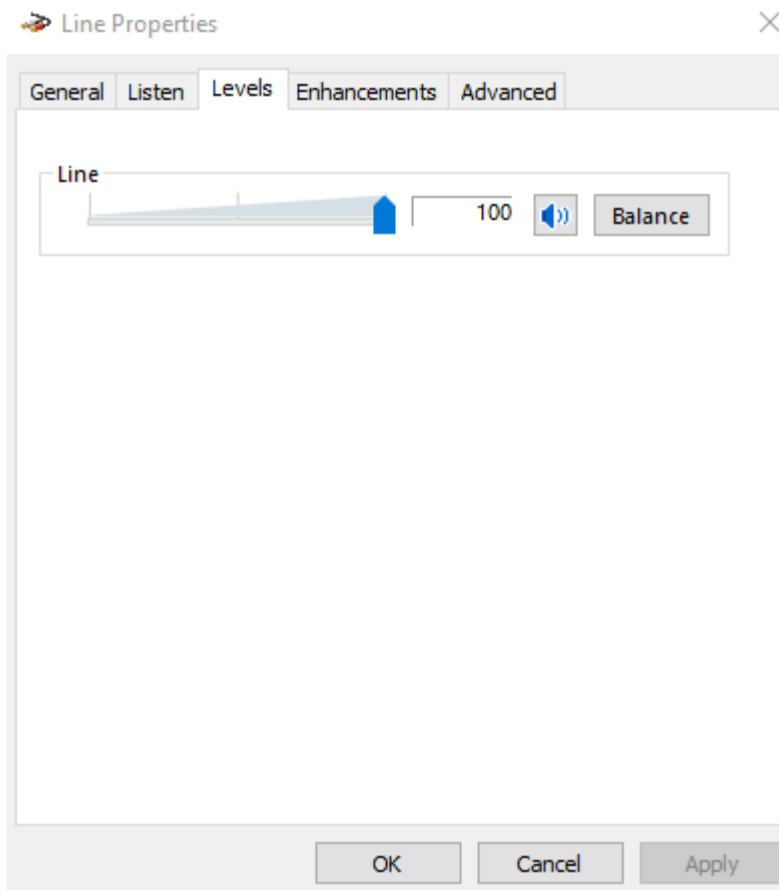
- Set TI USB Audio UAC2.0 as Recording Device.



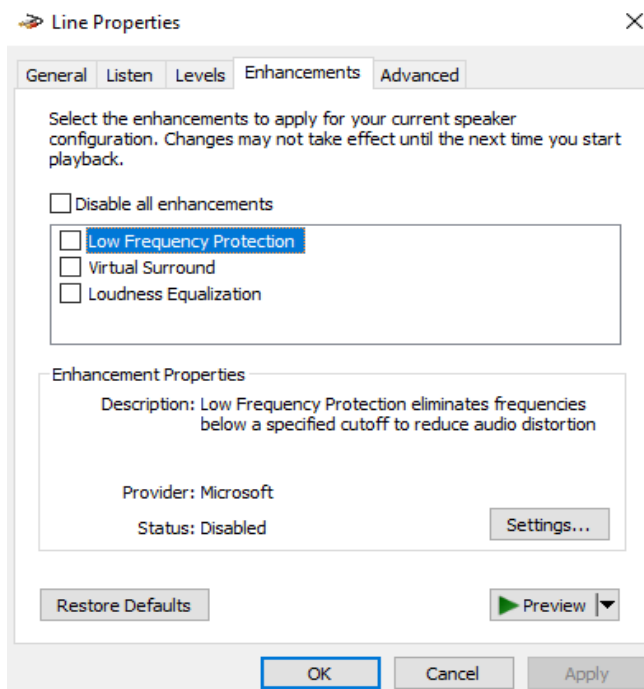
- Double click on the selected option to open its properties.



- Levels – Set volume level to maximum.



- Enhancements – Disable all Enhancements if enabled.



- Advanced - Set Default Format as **24 bit, 48000 Hz (Studio Quality)** and disable exclusive mode.

