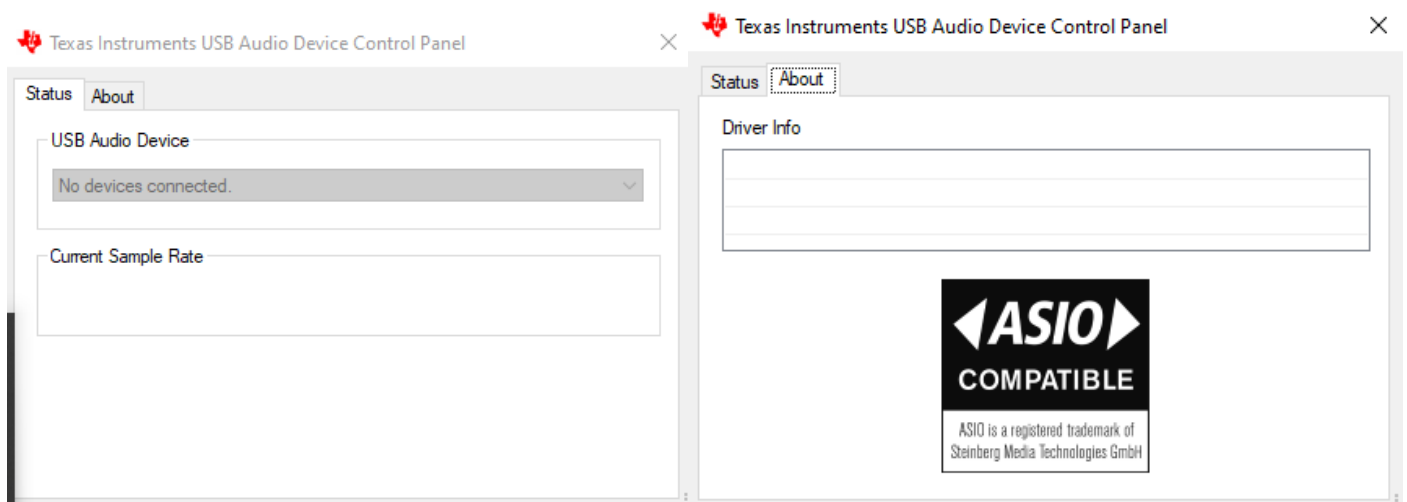


The boards are supplied with 24Vdc, USB to PC, coax SPDIF. User interface LEDs are not lit, the buttons are not working.

Yet the driver is like this:



The boards are connected to USB, Coax SPDIF, 24Vdc! Windows 10 Pro is installing its own Microsoft driver.

[View basic information about your computer](#)

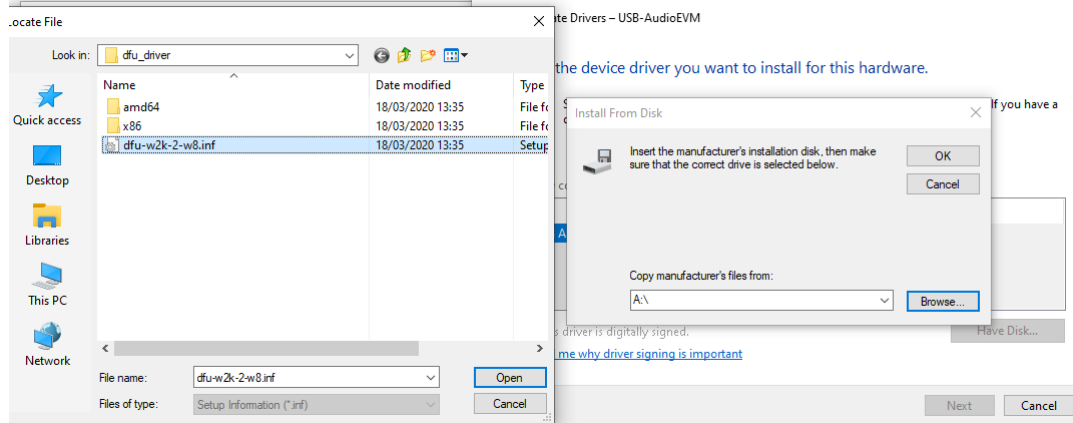
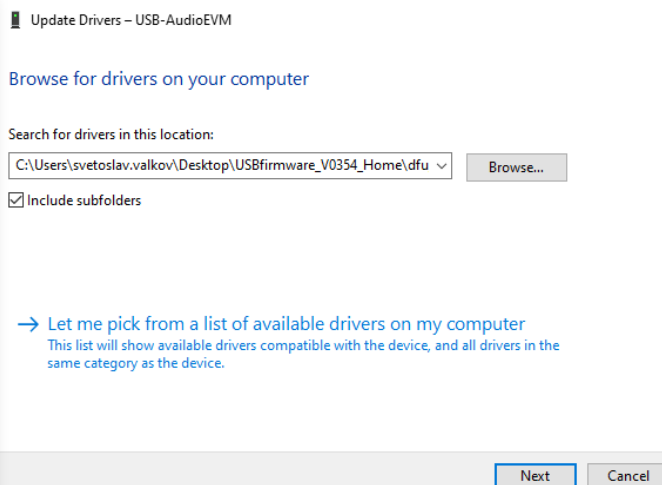
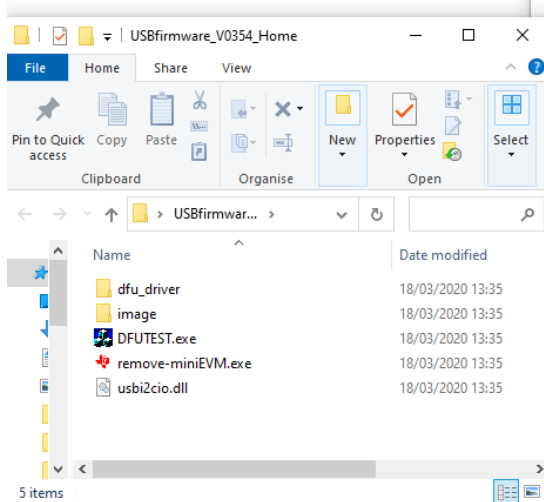
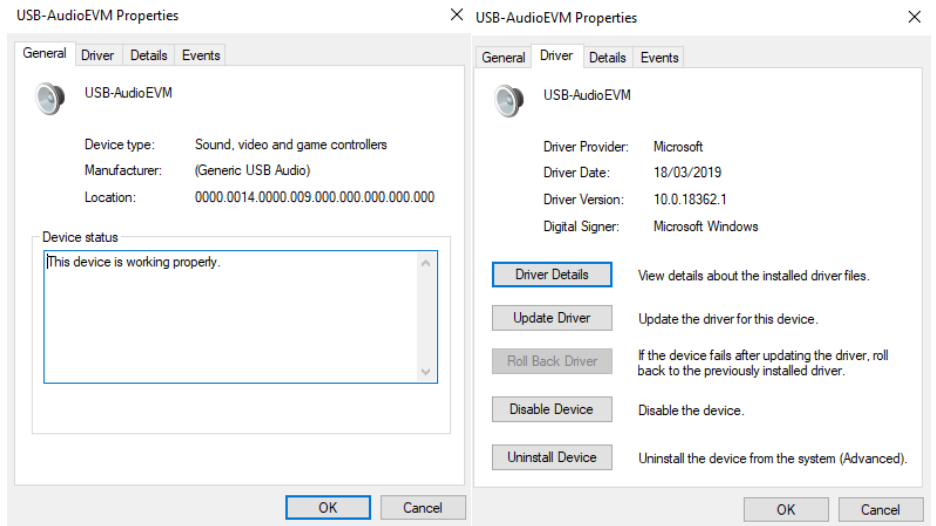
Windows edition

Windows 10 Pro

© 2019 Microsoft Corporation. All rights reserved.

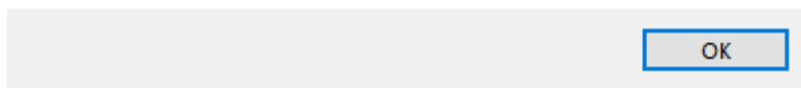


According to some stuff I read, there is a TI driver USBfirmware_V0354_Home (or am I wrong?). Below is my unsuccessful attempt to change the driver:

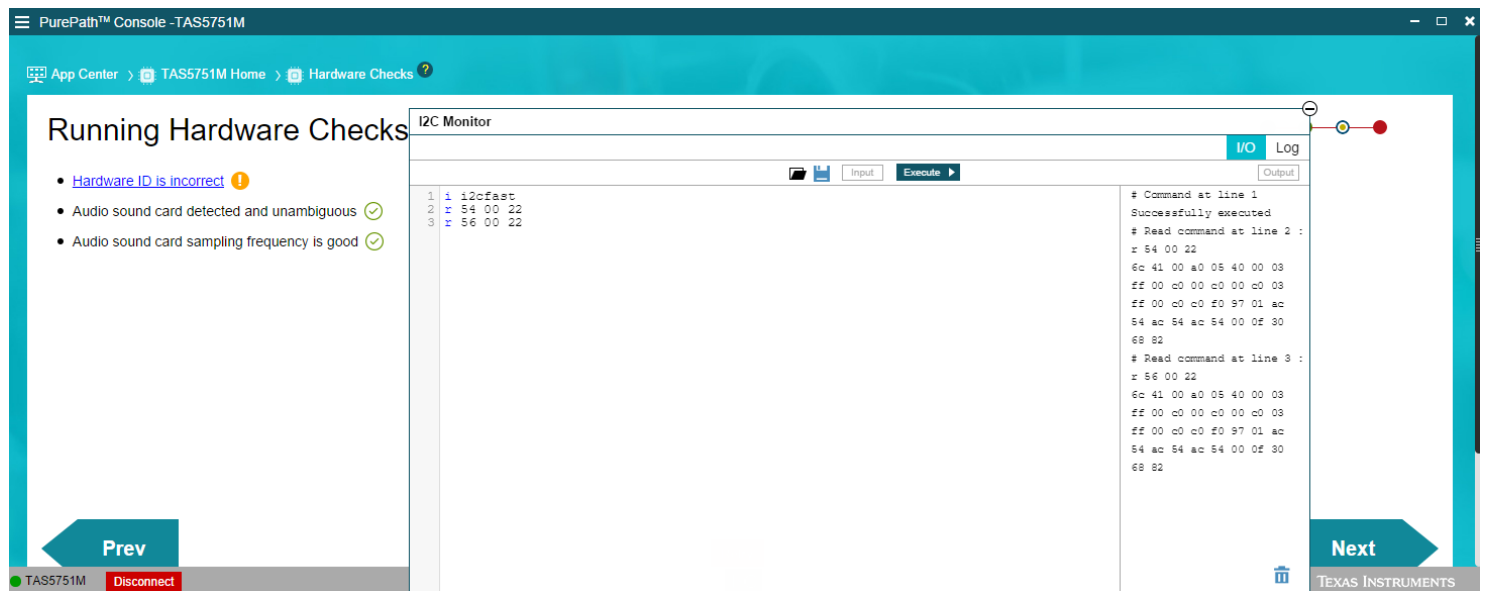
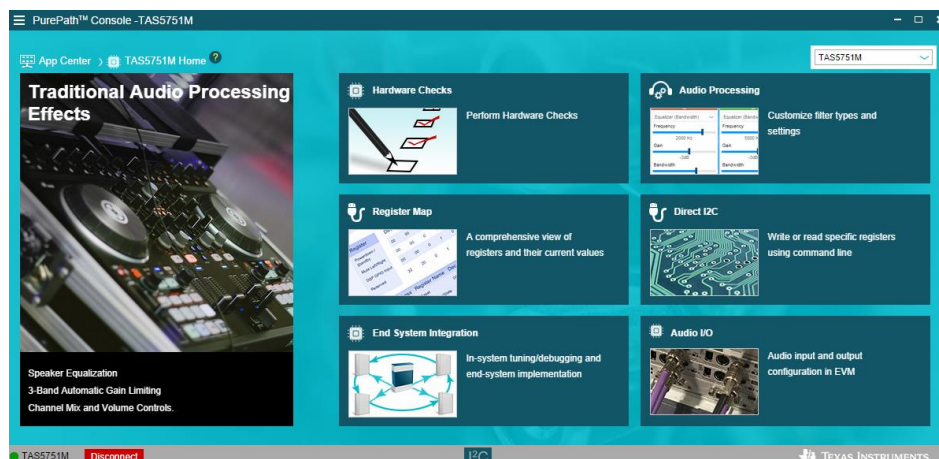
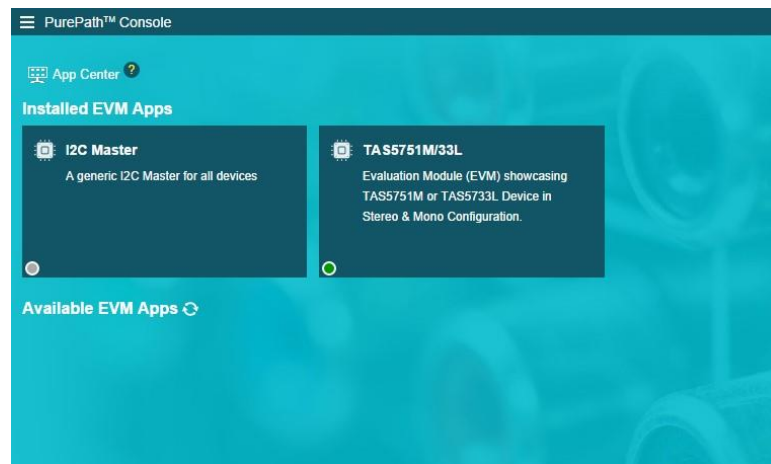


Select Device

The folder you specified doesn't contain a compatible software driver for your device. If the folder contains a driver, make sure it is designed to work with Windows for x64-based systems.

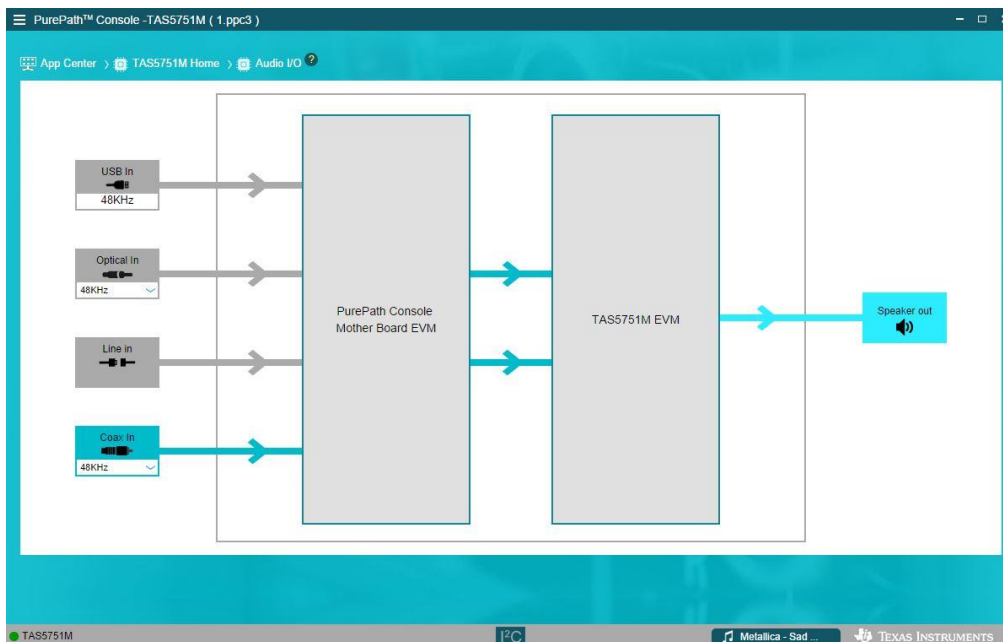


Current state of PPC3 and apps I have access to are as follows:



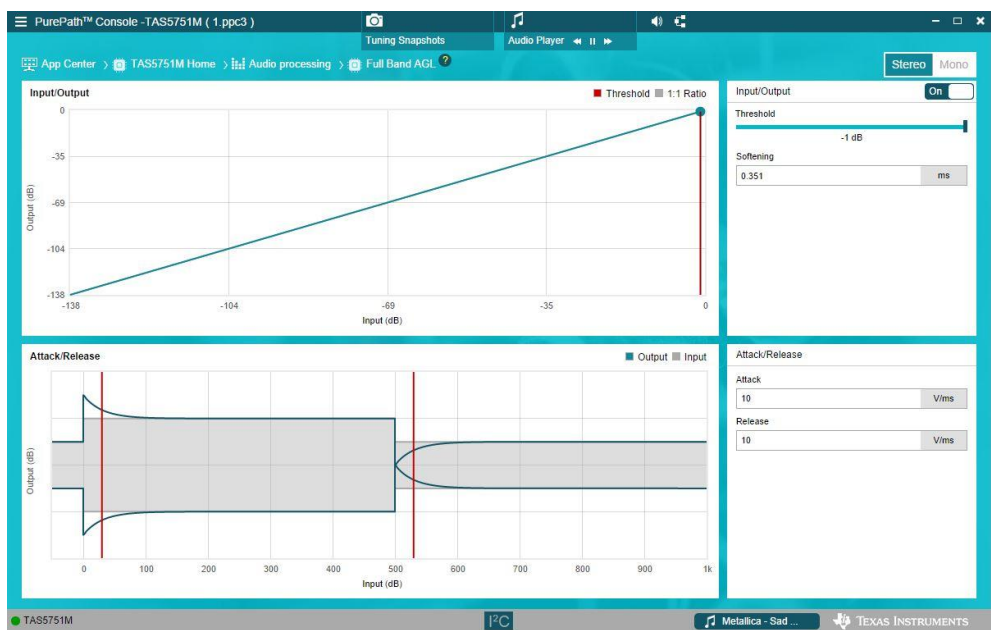
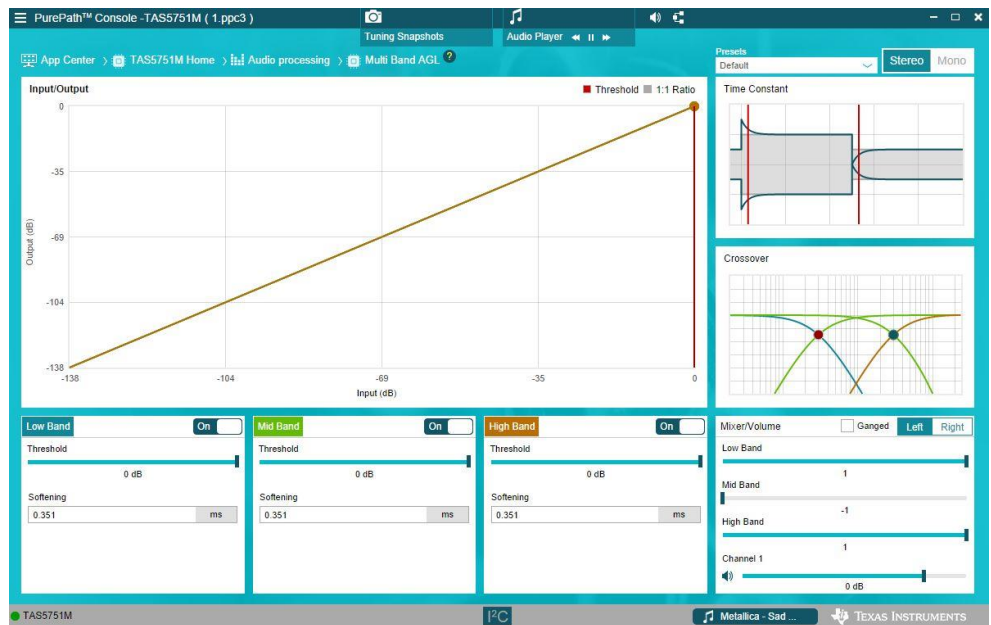
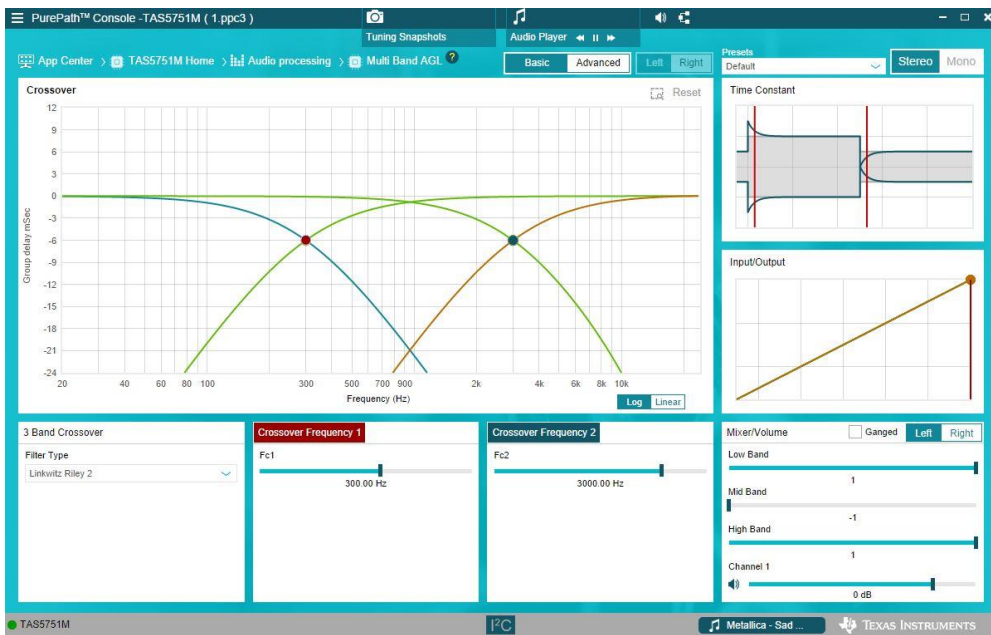
As you can see the board is connected, the Hardware ID is incorrect, but I2C is still working. I read in e2e forum that the wrong HW ID is not a problem as the I2C is still working. Also, there is some Firmware Update tool and a procedure to restore the right HW ID.

Following are my current settings (all the windows I could access):



This screenshot shows the 'Audio processing' settings window. The top bar includes 'Tuning Snapshots', 'Audio Player' (with play/pause and volume icons), and a 'Modulation Scheme' dropdown set to 'BD'. Below this, there are four main configuration panels: 'DC Block and LR Mixer' (with 'High Pass Filter Type' set to 'ButterWorth 2' and 'Frequency' at 5.00 Hz), 'Equalizer' (with a toggle set to 'OFF'), 'Multi Band AGC' (set to 'Programable Three-Band Automatic Gain Limiter'), and 'Full Band AGC' (set to 'Programable Full Band Automatic Gain Limiter'). A 'Volume Configuration' section on the left includes sliders for 'Master Volume' (-61.25 dB), 'Pre Scale' (0 dB), and 'Post Scale' (0 dB), along with 'Enter' and 'Exit' buttons. The status bar at the bottom is identical to the first screenshot.





PurePath™ Console - TAS5751M (1.ppc3)

App Center > TAS5751M Home > Register Map

Stereo Mono

Register Map

Read All Registers

Register Name	Address	Value	Bits								Description
			7	6	5	4	3	2	1	0	
Control											
Clock Control Register	0x00	0x8c	0	1	1	0	1	1	0	0	
Error Status Register	0x02	0x00	0	0	0	0	0	0	0	0	
IC delay Channel 1	0x11	0xb8	1	0	1	1	1	0	0	0	
IC delay Channel 2	0x12	0x60	0	1	1	0	0	0	0	0	
IC delay Channel 3	0x13	0xa0	1	0	1	0	0	0	0	0	
IC delay Channel 4	0x14	0x48	0	1	0	0	1	0	0	0	
Modulation index register	0x10	0x01	0	0	0	0	0	0	0	1	
OSC trim	0x1B	0xc0	1	1	0	0	0	0	0	0	
Serial data interface register	0x04	0x05	0	0	0	0	0	1	0	1	
Soft Mute Register	0x06	0x00	0	0	0	0	0	0	0	0	
System control register 1	0x03	0xa0	1	0	1	0	0	0	0	0	
System Control Register 2	0x05	0x00	0	0	0	0	0	0	0	0	

1 Default Value 1 Modified Value

According to the settings and datasheets it has to have sound playing on the speakers. Unluckily, there is no sound.

There is whistling sound that could be muted.

I tried to use DFUTEST but something is wrong, too.

