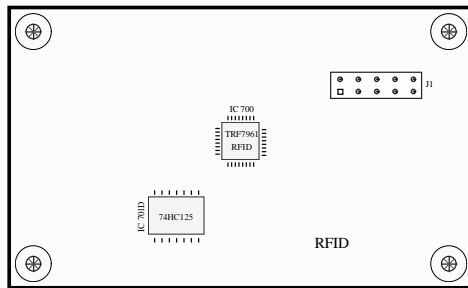


SIZE	DWG NO.	REV.
B	0842-716	00
REV.	ECO	DATE
		CHK



<p>NOTE: THE INFORMATION CONTAINED IN THIS DOCUMENT IS PROPRIETARY TO TYCOSAFETY PRODUCTS WESTMINSTER AND IS INTENDED FOR INTERNAL TYCOSAFETY PRODUCTS USE ONLY. SUCH INFORMATION MAY BE DETRIBUTED TO OTHERS ONLY BY WRITTEN PERMISSION OF AN AUTHORIZED TYCOSAFETY PRODUCTS OFFICAL. THIS RESTRICTION DOES NOT APPLY TO VENDOR PROPRIETARY PARTS THAT MAY BE DISCLOSED IN THIS DOCUMENT.</p>									
<p>TOLERANCE UNLESS SPECIFIED: TOOLING HOLE DIA: $\pm 0.020-0.000$ FINISHED PLATED HOLE DIA: ± 0.003 UNPLATED HOLE DIA: ± 0.005 HOLE TO HOLE DIMENSIONS: ± 0.003 SCORE LINE DIMENSION: ± 0.005 OVERALL BOARD DIMENSION: ± 0.005 MILLING (SLOTS): ± 0.005 BOARD THICKNESS: $\pm 10\%$ ALL OTHERS: ± 0.003 0.X: ± 0.005 0.X: ± 0.010</p>	<p>DO NOT SCALE DRAWING PROJECTION</p>	<p>DRAWING CONFORMS TO TYCOSUS DRAFTING STANDARDS UNLESS THE APPLICABLE ANSI STANDARDS LISTED BELOW</p> <table border="1"> <tr> <td>Y14.1-1989</td> <td>Y14.5M-1982</td> </tr> <tr> <td>Y14.3M-1979</td> <td>Y14.6-1975</td> </tr> <tr> <td>Y14.1-1975</td> <td>Y14.36-1976</td> </tr> </table>	Y14.1-1989	Y14.5M-1982	Y14.3M-1979	Y14.6-1975	Y14.1-1975	Y14.36-1976	<p>tyco/Safety Products 50 TECHNOLOGY DRIVE WESTMINSTER, MA 01441</p>
Y14.1-1989	Y14.5M-1982								
Y14.3M-1979	Y14.6-1975								
Y14.1-1975	Y14.36-1976								
<p>NEXT ASSY: SchemMxTASp</p> <p>DRAWN BY: Sandeepant Ahire DATE: 17/12/2018</p> <p>CHECKER: SchemCheckBy DATE: SchemCheckDate</p> <p>APPROVED: SchemApprovedBy DATE: SchemApprovedDate</p>	<p>TITLE: Tier-3 Addressable Panel_RFID</p> <p>EQUIP: Tier-3 Addressable Panel</p>	<p>SIZE: B DWG NO: 0842-716 SHT: 01 of 02/00</p>	<p>REV: 00</p>						

