

Place the decoupling capacitors close to power pins in layout

R16 is Popd

C92 is DNI

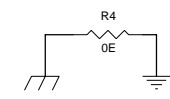
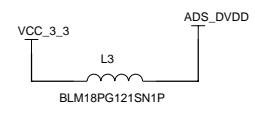
R85 is DNI

C91 is DNI

C89 is DNI

C90 is DNI

Note:
 For two channel ECG Do the following modification
 1) Mount 51K resistor in place of R71 and R63
 2) Mount 0 Ohm resistors in place of C48, C46, C49 and C50
 3) Make following components DNI
 R66, R64, R72, R62, C47, C45, R70 and R69



Title		
ADS1292		
Size	Document Number	Rev
B	ADS1x9xECG FE	A
Date:	Thursday, August 04, 2011	Sheet 2 of 7