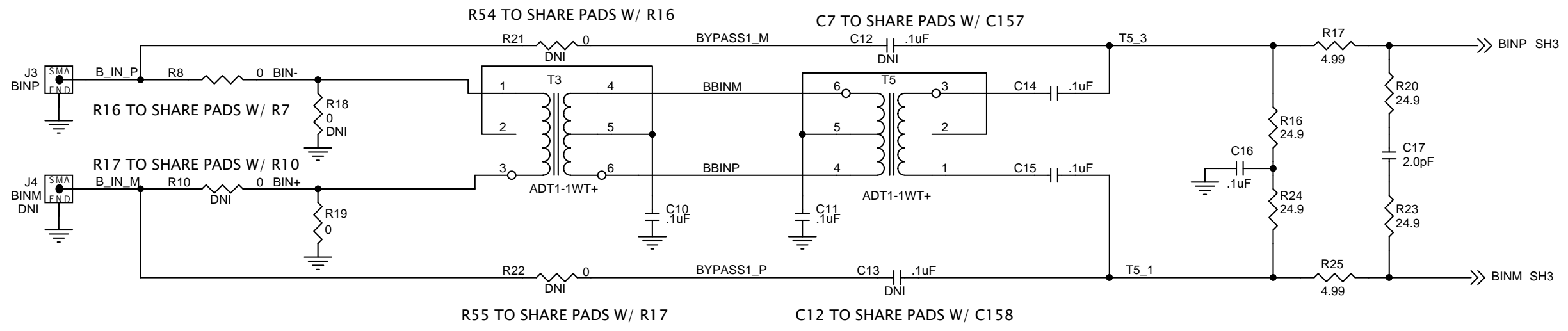

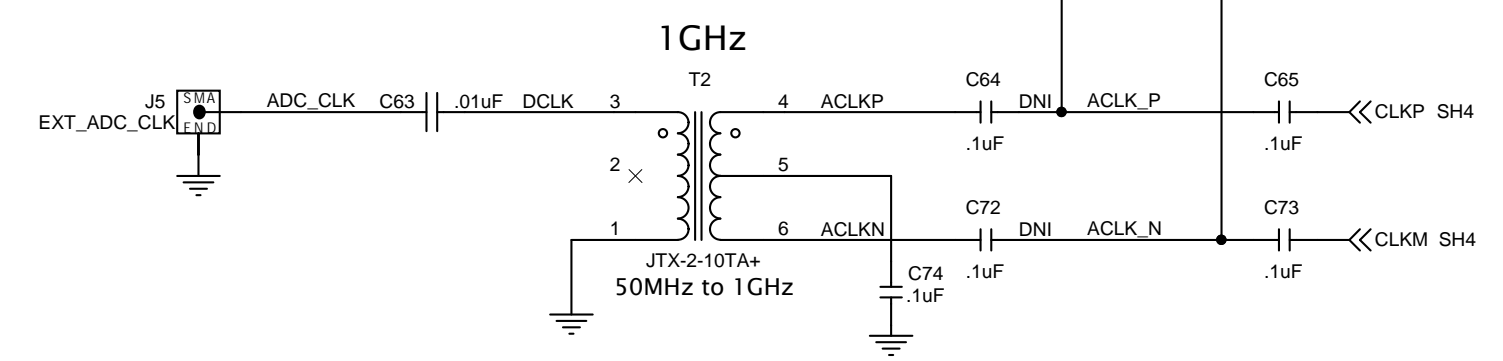
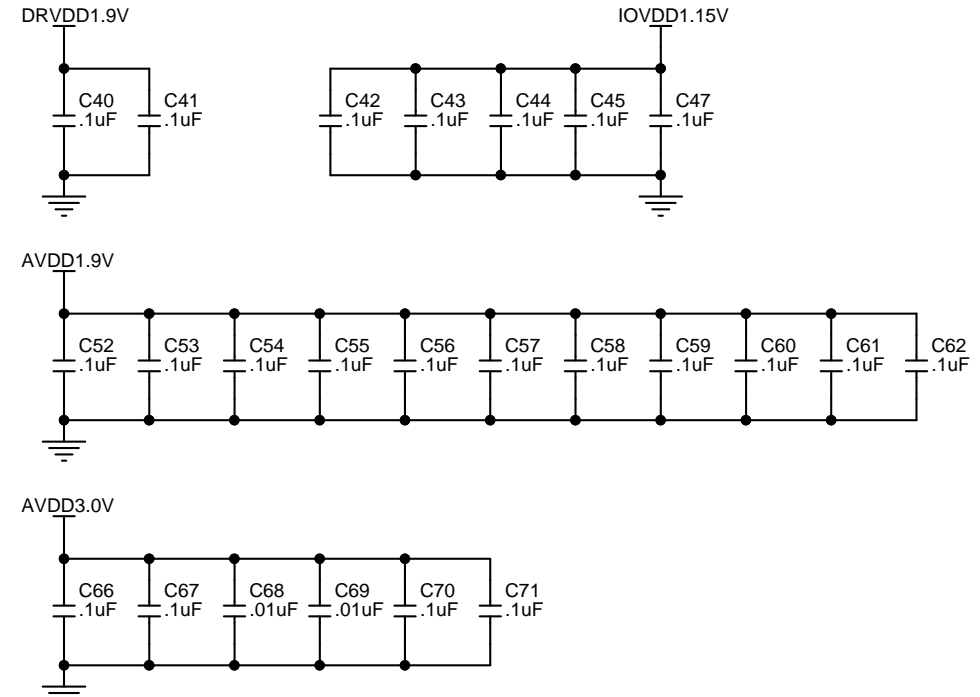
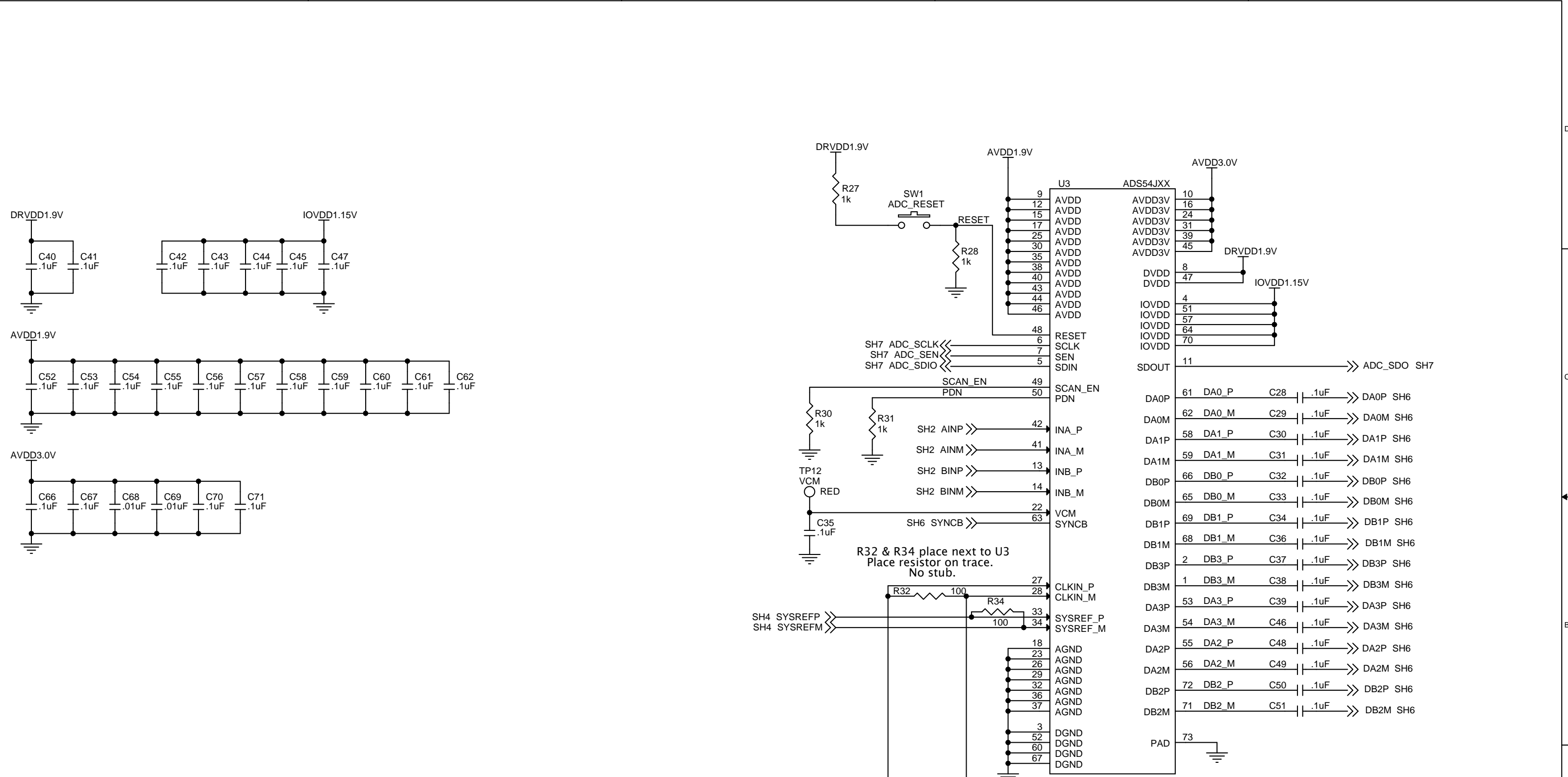


PLACE R1, R4, R7 & R10 ON THE TRACE - NO STUB




TEXAS INSTRUMENTS
 12000 TI Boulevard Dallas, Texas 75243

Title		
ANALOG IN		
Size	Document Number	Rev
B	SCH, ADS54JXX EVM	D
Date:	Friday, September 25, 2015	Sheet 2 of 9

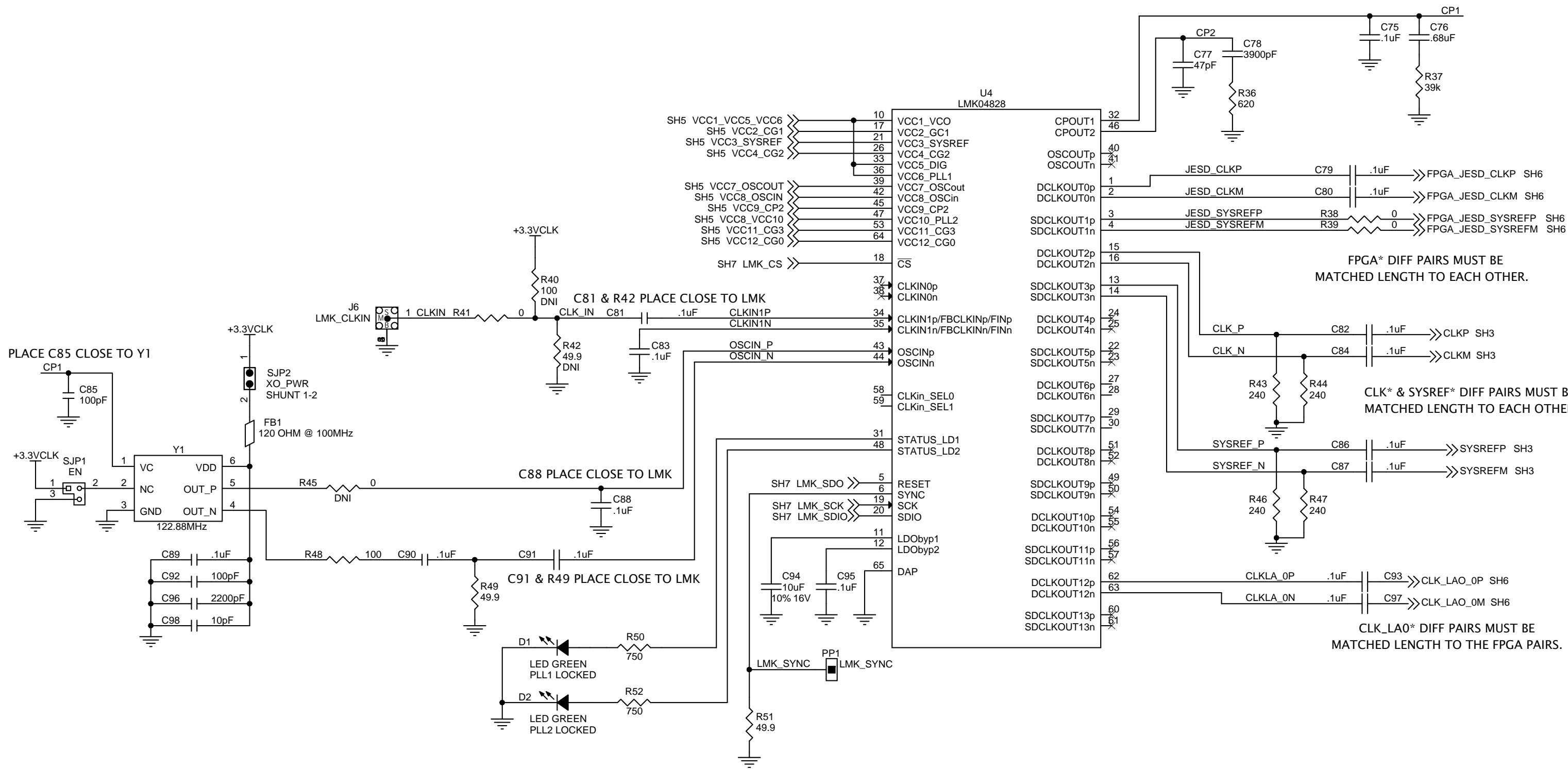


TEXAS INSTRUMENTS

Title: **ADC**

Size: **B** Document Number: **SCH, ADS54JXX EVM** Rev: **D**

Date: Friday, September 18, 2015 Sheet 3 of 9

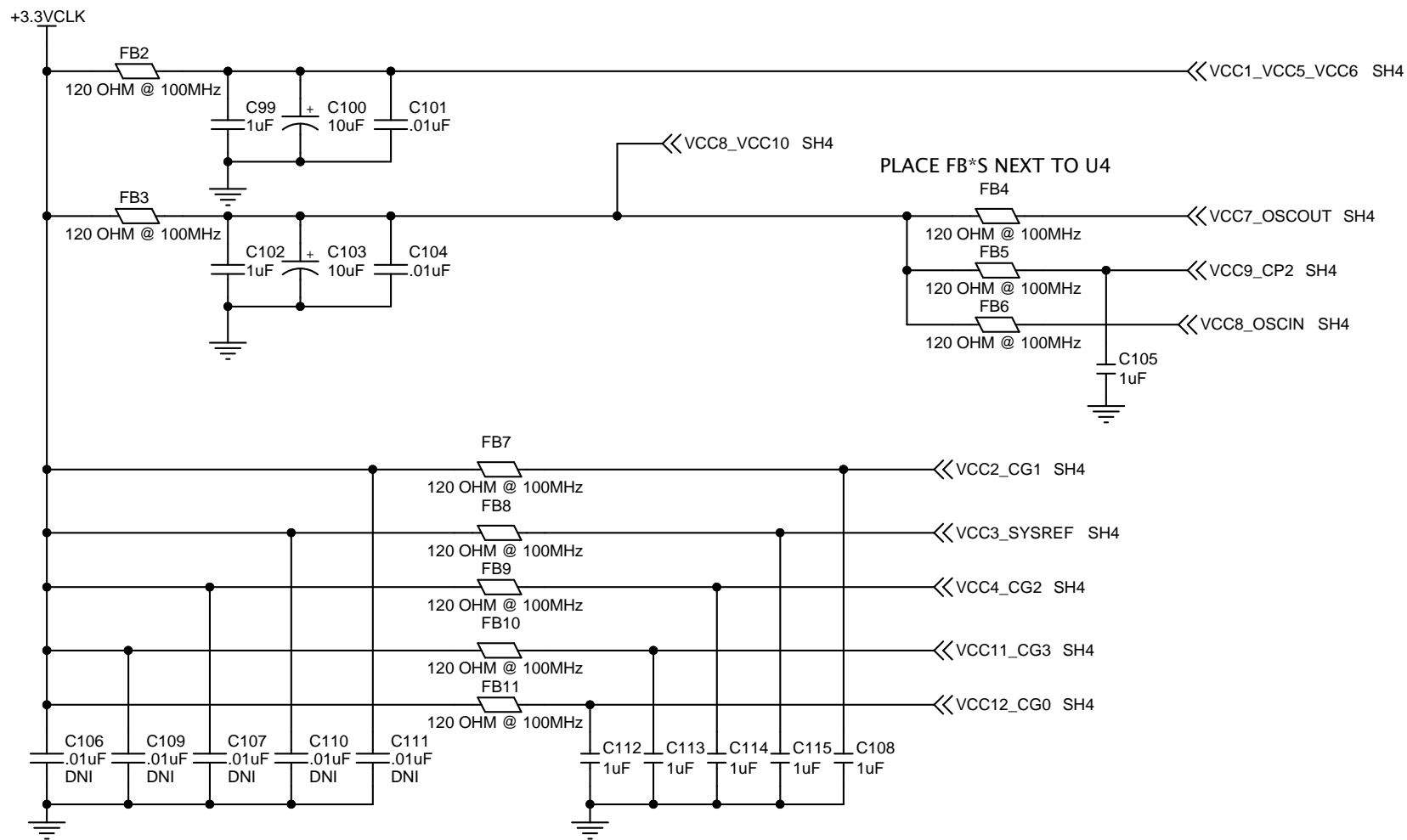


TEXAS INSTRUMENTS

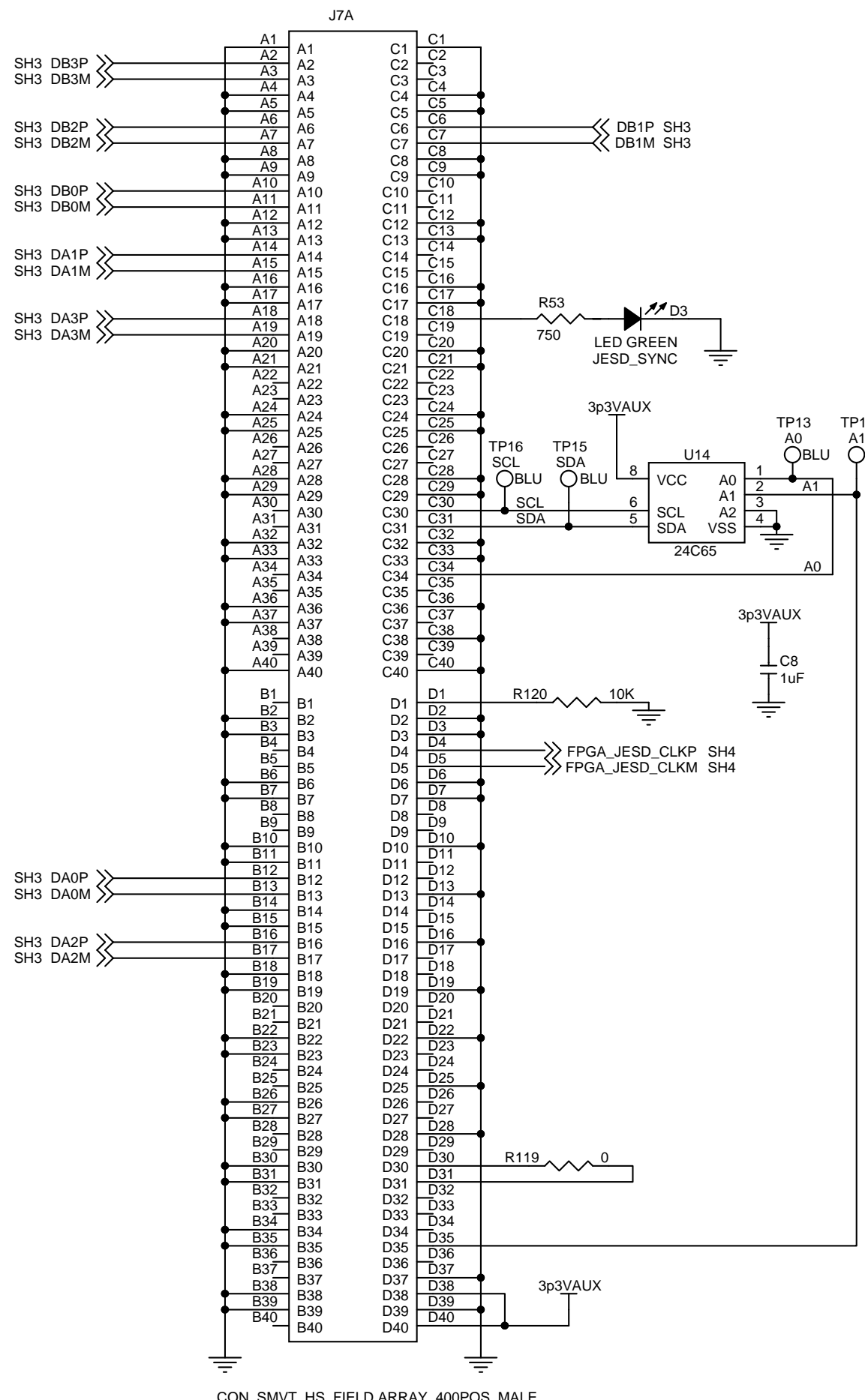
12500 TI Boulevard, Dallas, Texas 75243

CLOCK

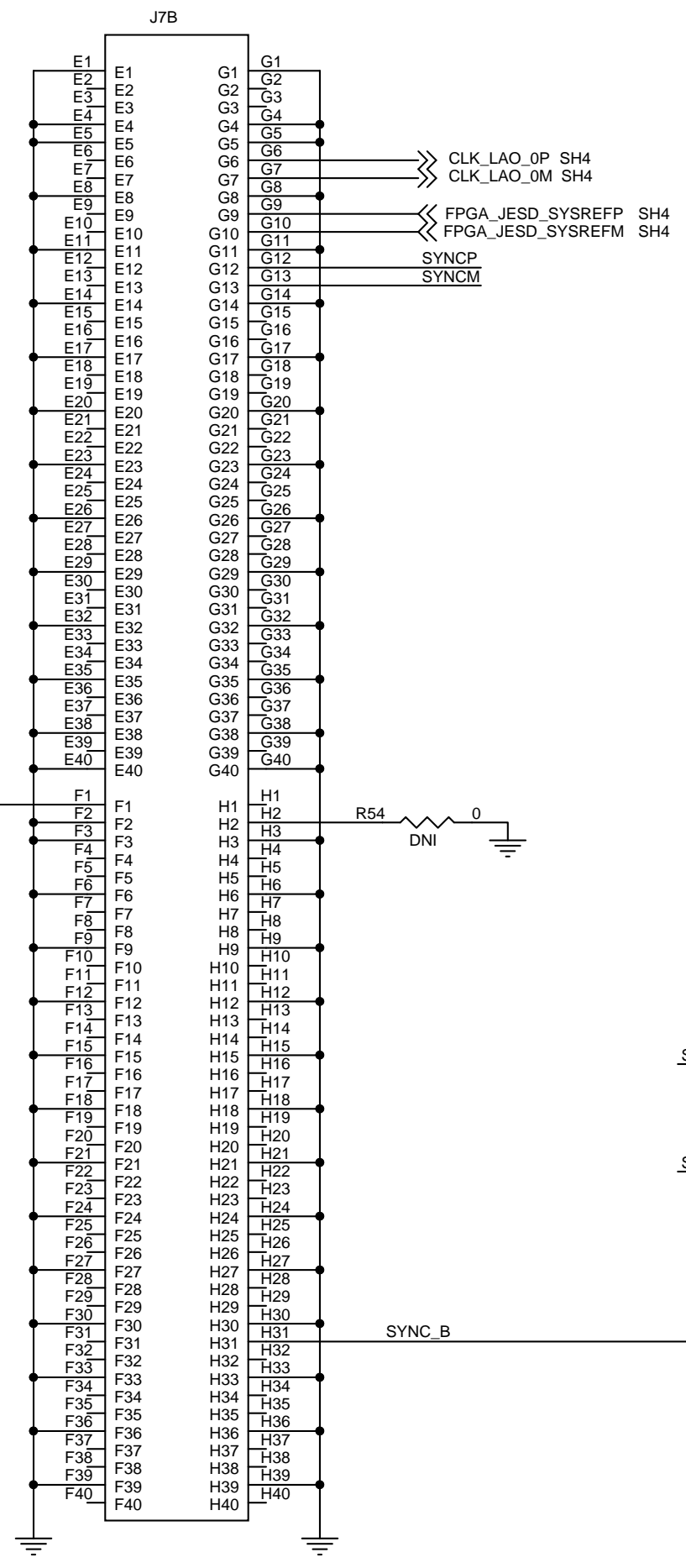
Size B	Document Number SCH, ADS54JXX EVM	Rev D
Date: Tuesday, September 29, 2015	Sheet 4 of 9	



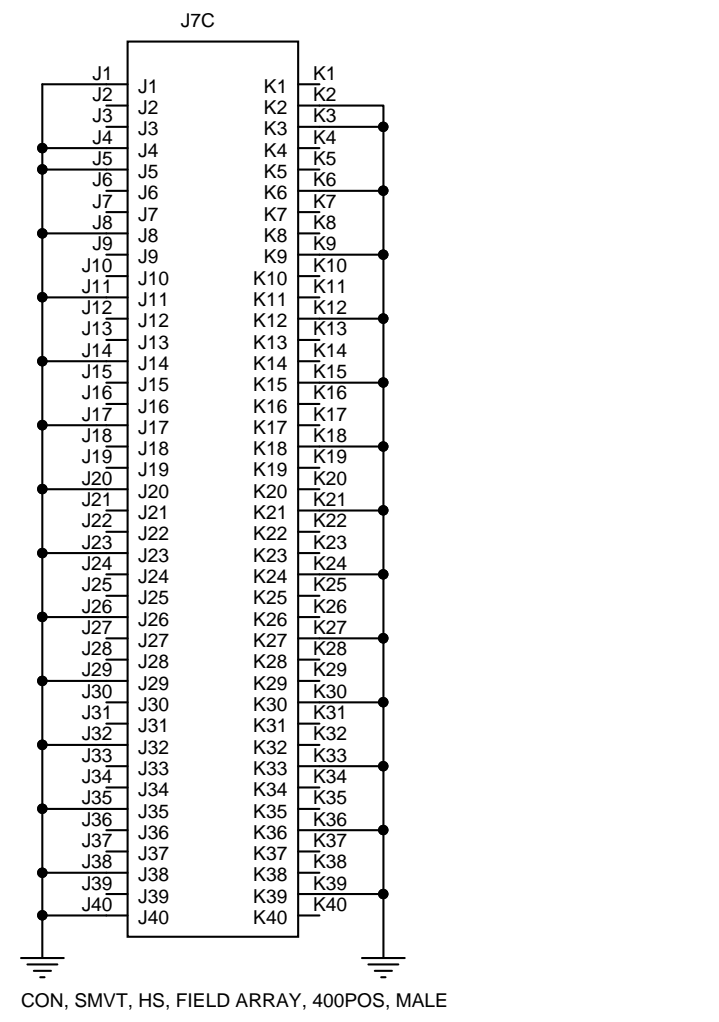
Title		
LMK POWER		
Size	Document Number	Rev
B	SCH, ADS54JXX EVM	D
Date:	Friday, September 18, 2015	Sheet 5 of 9



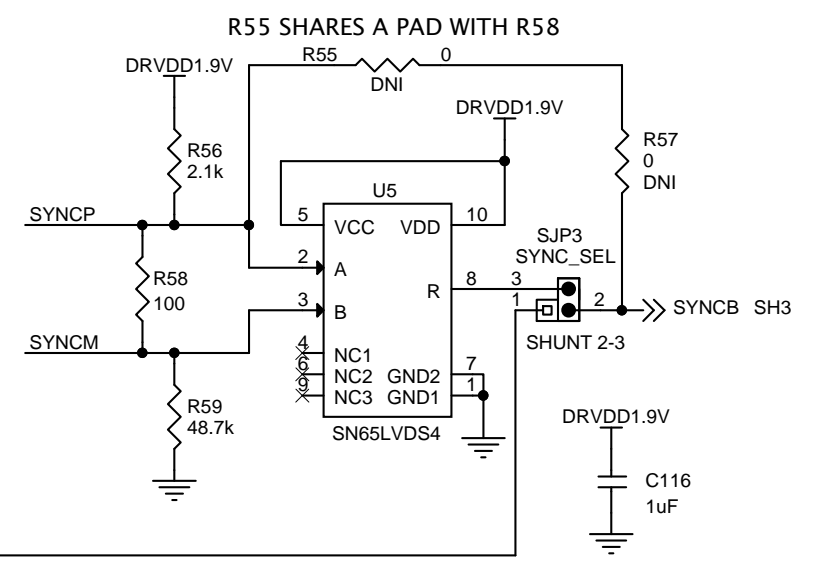
CON, SMVT, HS, FIELD ARRAY, 400POS, MALE



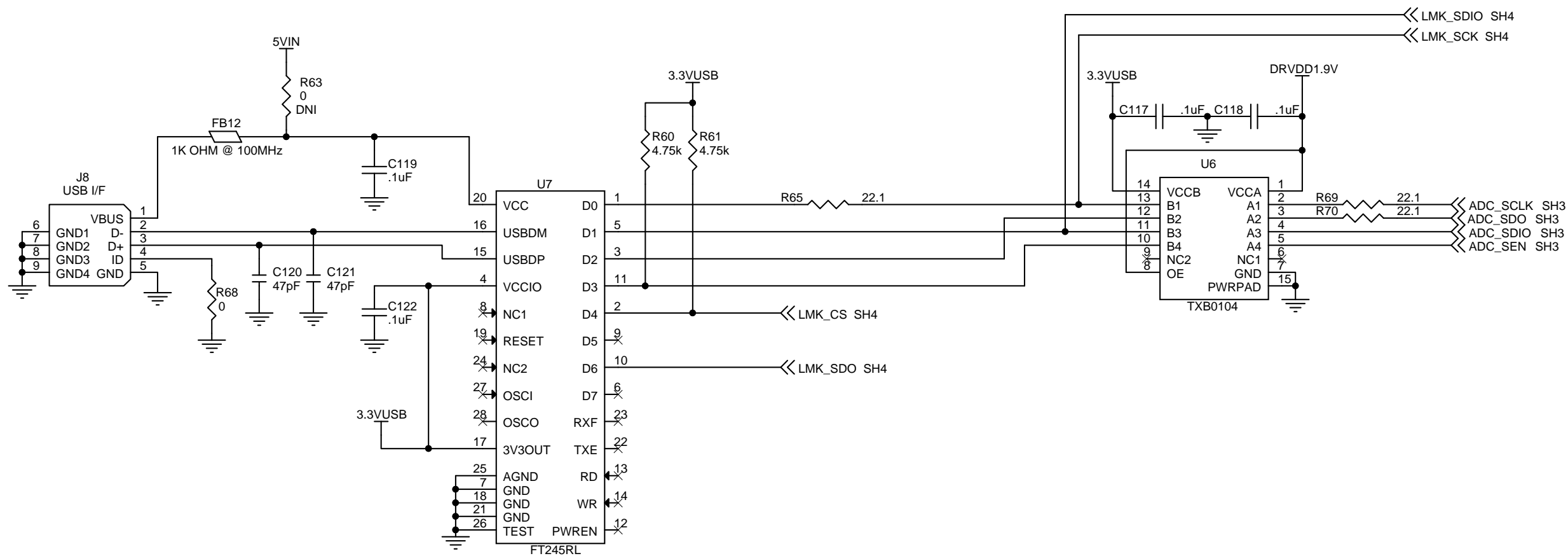
CON, SMVT, HS, FIELD ARRAY, 400POS, MALE



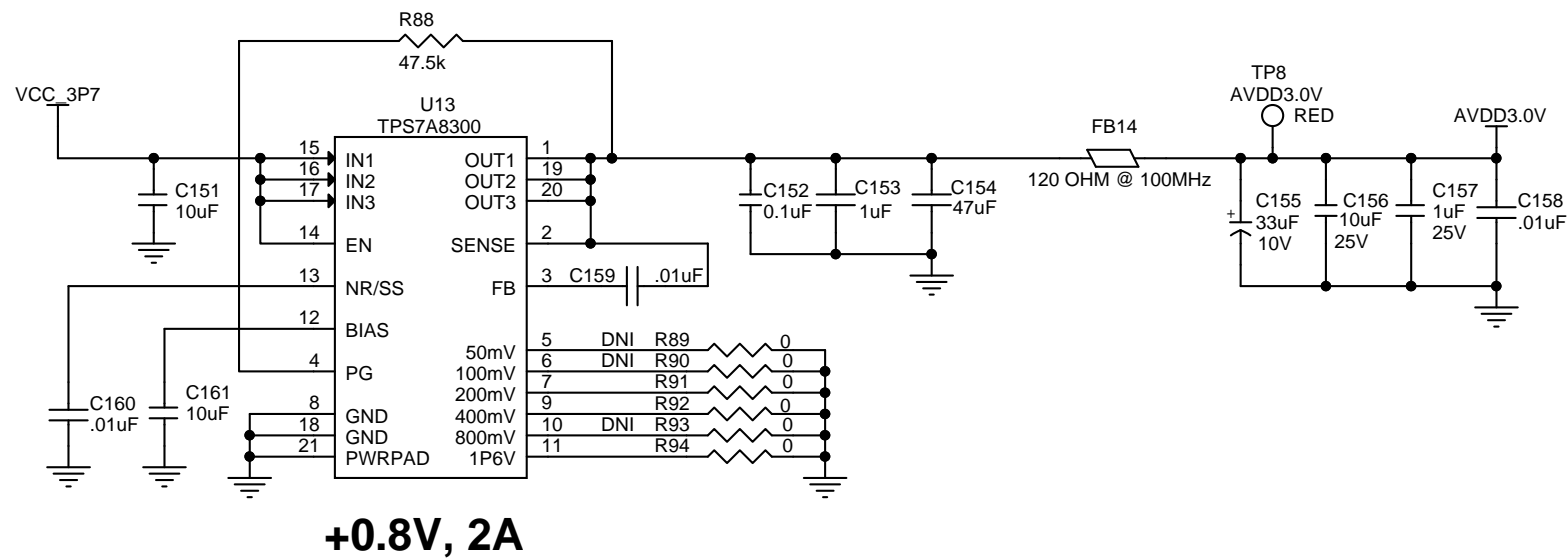
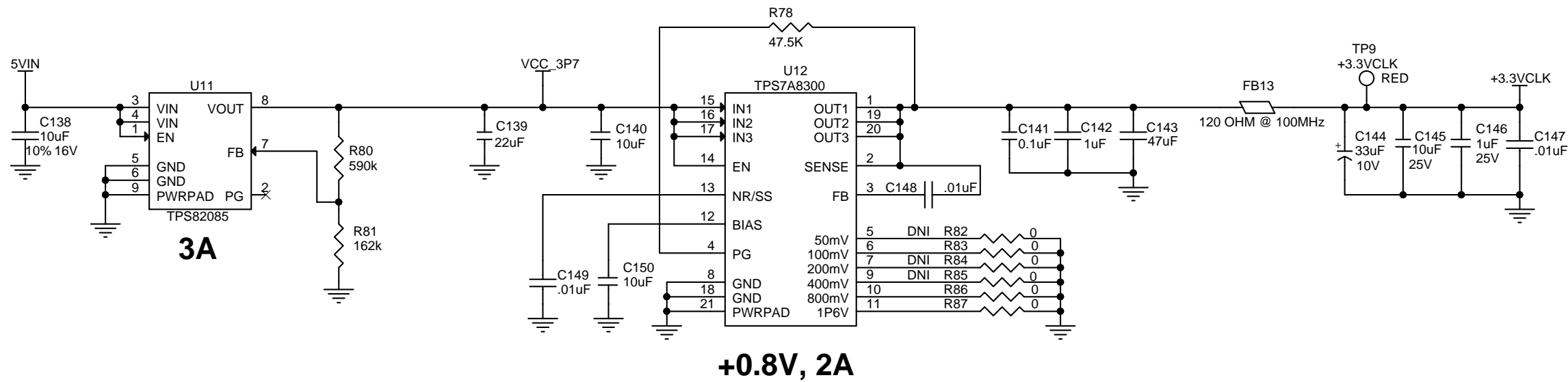
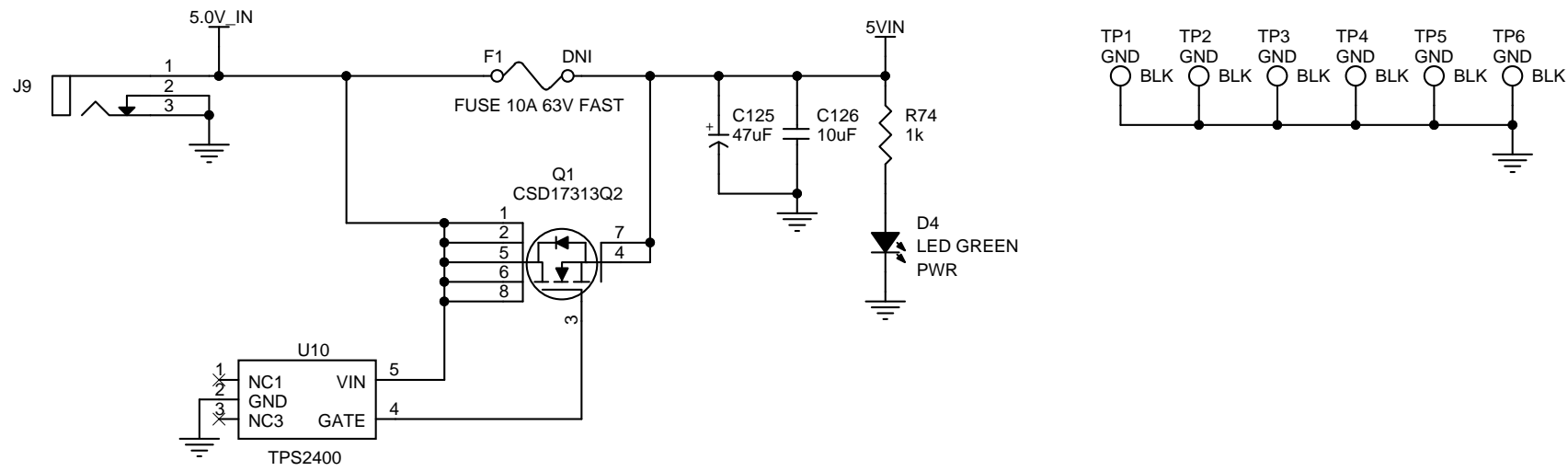
CON, SMVT, HS, FIELD ARRAY, 400POS, MALE



TEXAS INSTRUMENTS
 Title **OUTPUT - FMC CONNECTOR**
 Size **B** Document Number **SCH, ADS54JXX EVM** Rev **D**
 Date: Friday, September 18, 2015 Sheet 6 of 9

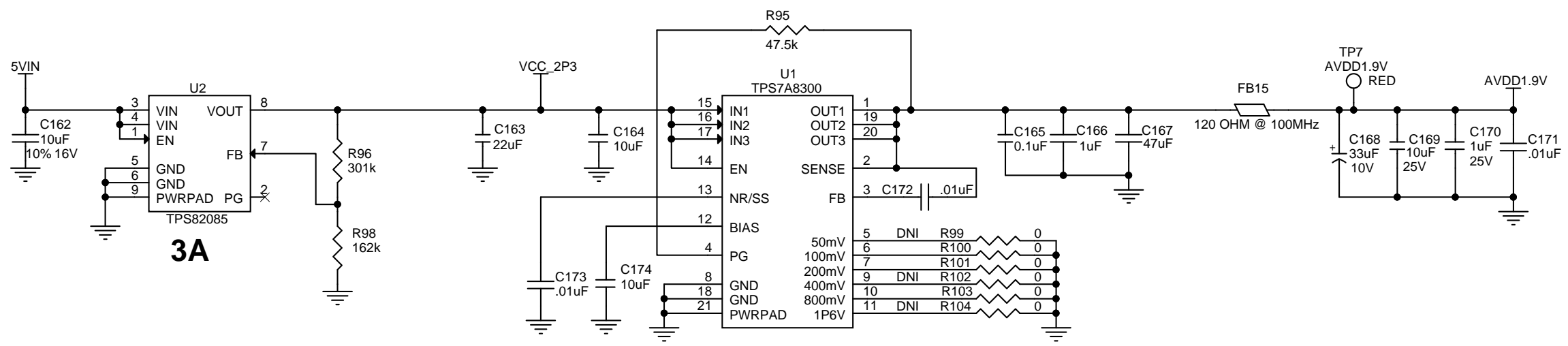


Title		
USB		
Size	Document Number	Rev
B	SCH, ADS54JXX EVM	D
Date:	Friday, September 18, 2015	Sheet 7 of 9



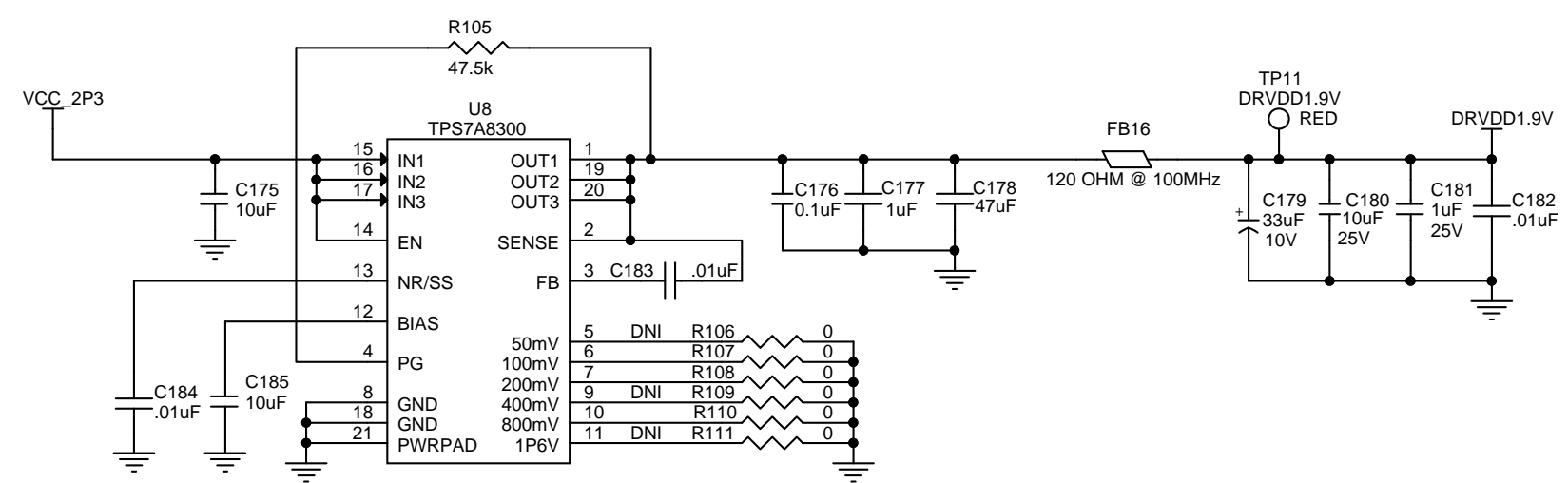
TEXAS INSTRUMENTS

Title MAIN POWER		
Size B	Document Number SCH, ADS54JXX EVM	Rev D
Date: Friday, September 18, 2015	Sheet 8 of 9	1

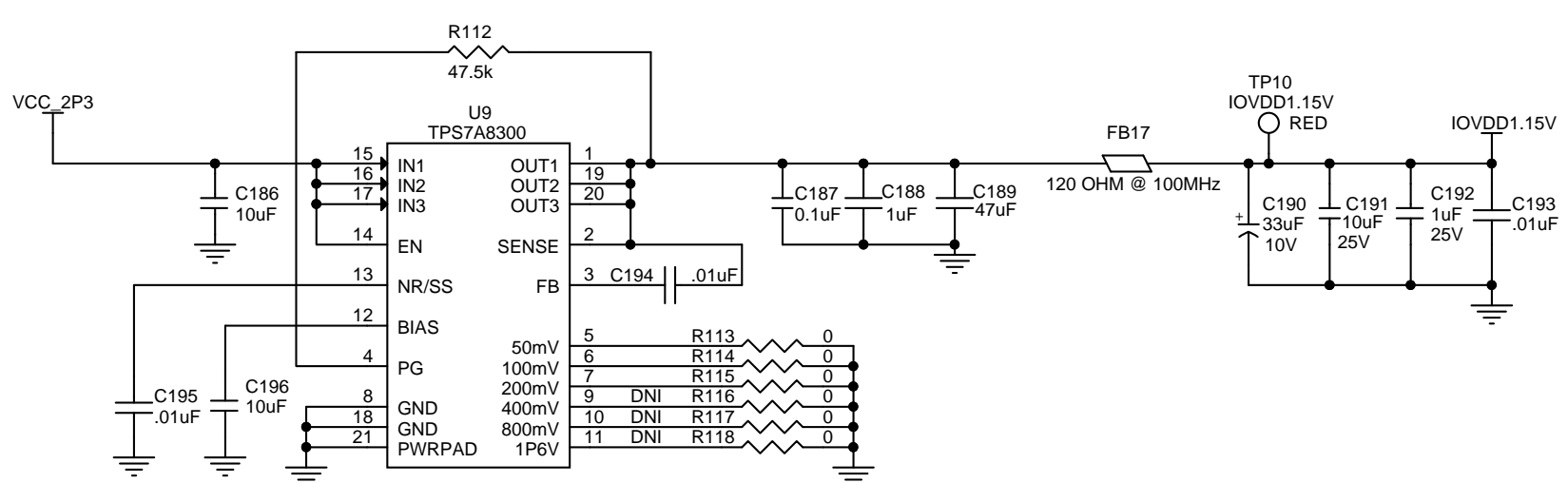


3A

+0.8V, 2A

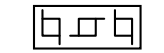


+0.8V, 2A



+0.8V, 2A

BARE BOARD, ADS54JXX



MECHANICAL PARTS

- MT1
STANDOFF, FEMALE, 4-40 X 1 3/16", AL
- SCREW, 4-40 X 3/4", PHIL, SS
- MT2
STANDOFF, FEMALE, 4-40 X 1 3/16", AL
- SCREW, 4-40 X 3/4", PHIL, SS

TEXAS INSTRUMENTS

Title: **POWER 3.3V**

Size **B** Document Number **SCH, ADS54JXX EVM** Rev **D**

Date: Friday, September 18, 2015 Sheet 9 of 9