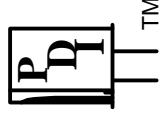


# Precision Devices, Inc.



TM

8840 N. Greenview Dr.  
 Middleton, WI 53562  
 Phone: 608-831-4445  
 1-800-274-XTAL  
 Fax: 608-831-3343



TM

Visit our web site at [www.pdixtal.com](http://www.pdixtal.com)

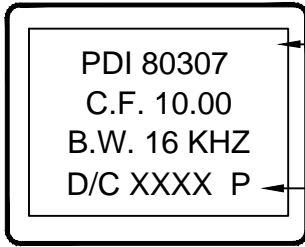
Sales Information [sales@pdixtal.com](mailto:sales@pdixtal.com)

## Electrical Specifications

1. Center Frequency (fo): 10.000 Mhz
2. Passband:  
 Center Frequency (fc): 10.0 MHz  $\pm$ 300 Hz  
 Bandwidth between 6dB frequencies:  $\geq$  fo  $\pm$ 8.0 kHz
3. Stopband:  
 @  $\geq$  60dB: fo  $\pm$ 20 kHz  
 @  $\geq$  80dB: fo  $\pm$ 25 kHz
4. Alternate Attenuation:  $\geq$  90dB
5. Ripple:  $\leq$  2.0dB maximum
6. Insertion Loss:  $\leq$  6.0dB  
 (measured on smallest attenuation in passband)
7. Termination (In/Out): 3800 Ohms//1.0pf  $\pm$ 0.5pf
8. Operating Temperature Range: -40°C to +70°C
9. Number of Poles: 8-pole

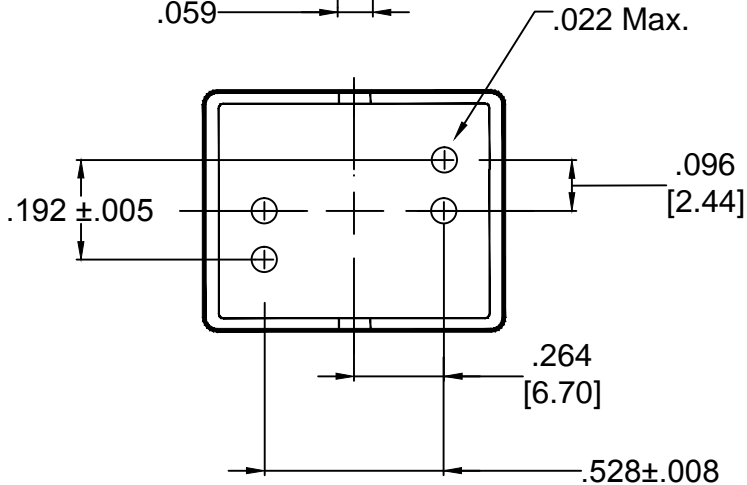
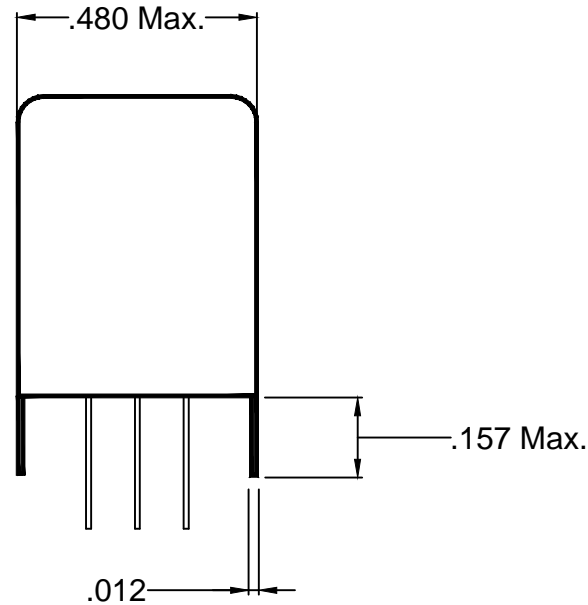
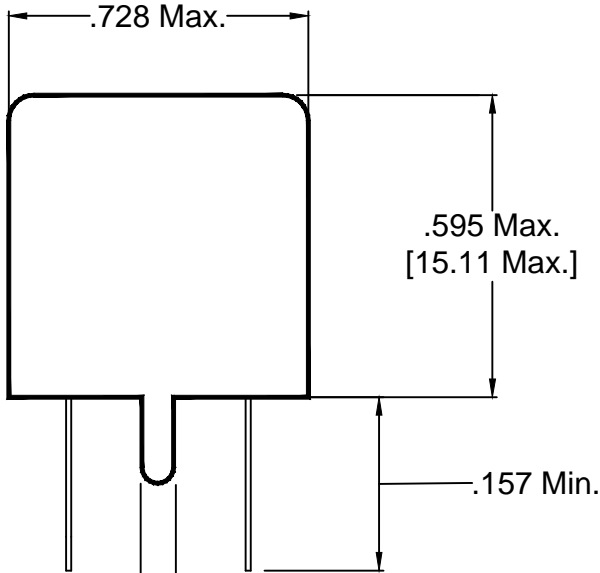
The information contained in this drawing is the sole property of Precision Devices Inc. Any reproduction in part or as a whole without the written permission of Precision Devices Inc. is prohibited.

REV.	DATE	PAGE	DESCRIPTION	Auth.	ECN	Originator	Date	Engineering	Date
						D.G.	8/3/2011	C.S.	8/3/2011
						TITLE Final Assembly			
						PART NUMBER <b>FTR-80307</b>			
						DATE	SCALE	ECN.	REV.
						8/3/2011	N.T.S.	N/A	A
A	1/11	All	Original Release	D.G.	N/A	SIZE	CAGE		Page 1 of 3
						A	0S4G1		



Paper Label  
to be used

Traceability Code



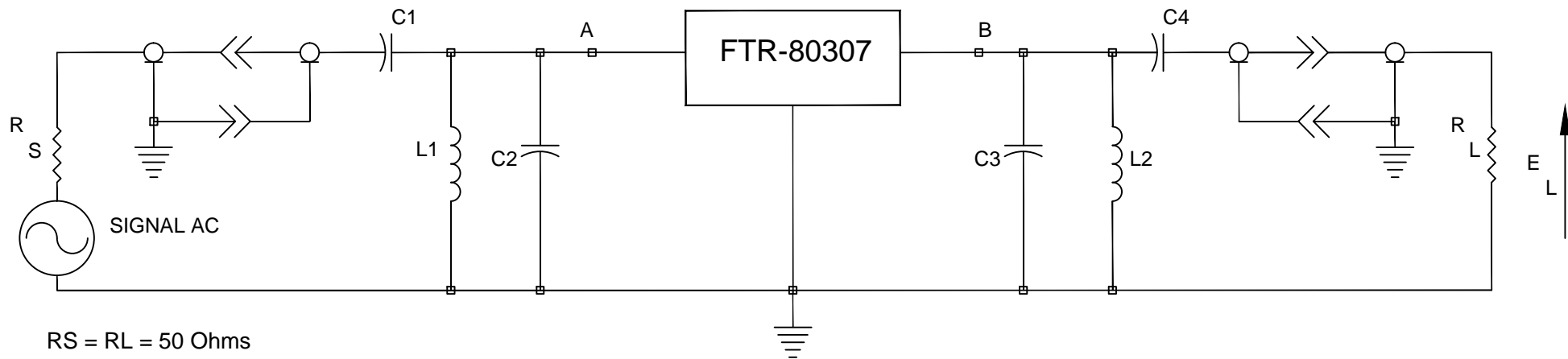
# Precision Devices Inc.

8840 N. Greenview Dr.  
Middleton WI 53562  
608-831-4445  
1-800-274-XTAL



Manufacturer of Quartz Crystal Products

DECIMAL XX=±.020 XXX=±.008	PART NUMBER <b>FTR-80307</b>		DRAWN BY D. Gibney
METRIC XX=±.50 XXX=±.20	SCALE N.T.S.	FREQUENCY 10.000 Mhz	DATE 8/3/2011
ANGULAR XX=±2°	REV. LEVEL A	ECN NO. N/A	CAGE CODE 0S4G1



$R_S = R_L = 50 \text{ Ohms}$   
 $L_1 = L_2 = \text{Surface Mount Device}$   
 Inductance: 6.8uH (Coilcraft 1812CS Series)  
 $C_1 = C_4 = 33.0\text{pf} \pm 5\%$   
 $C_2 = C_3 = 1.8\text{pf} \pm 0.25\text{pf}$   
 $Z_{\text{Load}} = 3800 \text{ Ohms} // 1.0\text{pf} \pm 0.5\text{pf}$   
 $Z_{\text{Source}} = 3800 \text{ Ohms} // 1.0 \pm 0.5\text{pf}$

Z Source and Z Load are the impedance looking into point A and Point B respectively, with the filter removed and the test fixture terminated with a 50 Ohm resistive load.

Notes:

1. C2 and C3 are adjusted for optimum pass band characteristics.
2. EL1 = EL with a short between RS and RL.  
EL2 = EL with the test fixture between RS and RL.
3. Insertion Loss (dB) =  $20 \text{ Log} (10) \frac{EL_1}{EL_2}$  with ES held constant during measurement.
4. Initial Level of ES such that EL1 = 0.224 volts  $\pm 10\%$

# Precision Devices Inc.

8840 N. Greenview Dr.  
 Middleton WI 53562  
 608-831-4445  
 1-800-274-XTAL



Manufacturer of Quartz Crystal Products

DECIMAL XX=±.020 XXX=±.008	PART NUMBER <b>FTR-80307</b>		DRAWN BY D. Gibney
METRIC XX=±.50 XXX=±.20	SCALE N.T.S.	FREQUENCY 10.000 Mhz	DATE 8/3/2011
ANGULAR XX=±2°	REV. LEVEL A	ECN NO. N/A	CAGE CODE 0S4G1
			Final Testing Fixture
			Page 3 of 3