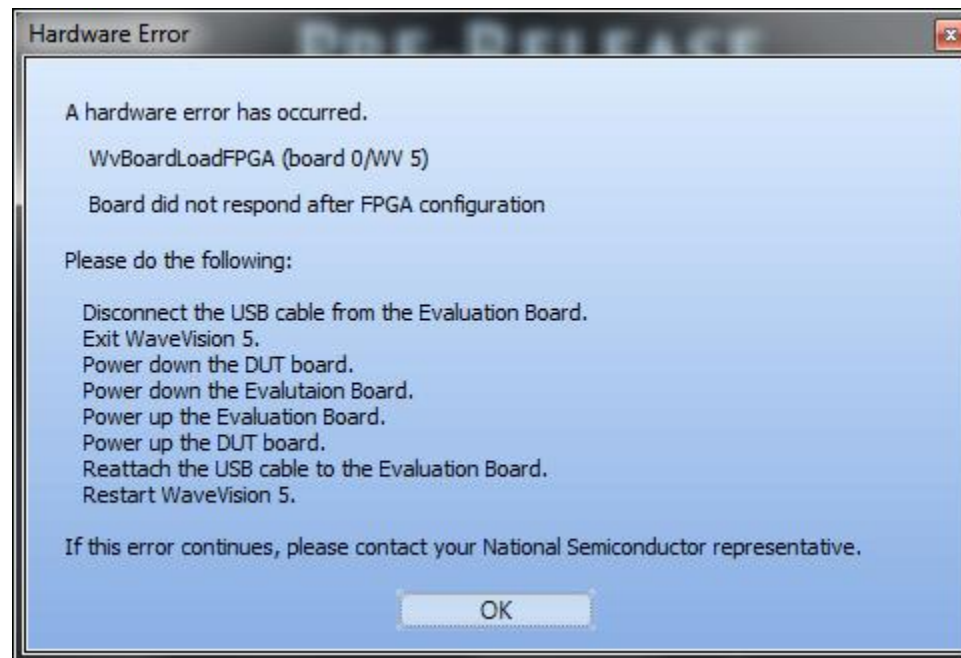


ADC10DV200EB Startup Process

Hardware Setup

- Connect ADC10DV200EB to Wavevision5.1 board
- Connect 5V DC power to the ADC10DV200EB power connector JR507
- Connect 12V DC power to the Wavevision5.1 board
- Turn 5V power on and turn on the Wavevision5.1 board power switch
- Turn on the 200 MHz clock applied to the ADC board at J201
- Connect the USB cable to the Wavevision board
- Launch Wavevision software

Error message first time launch WV5



Wavevision reports No hardware connected



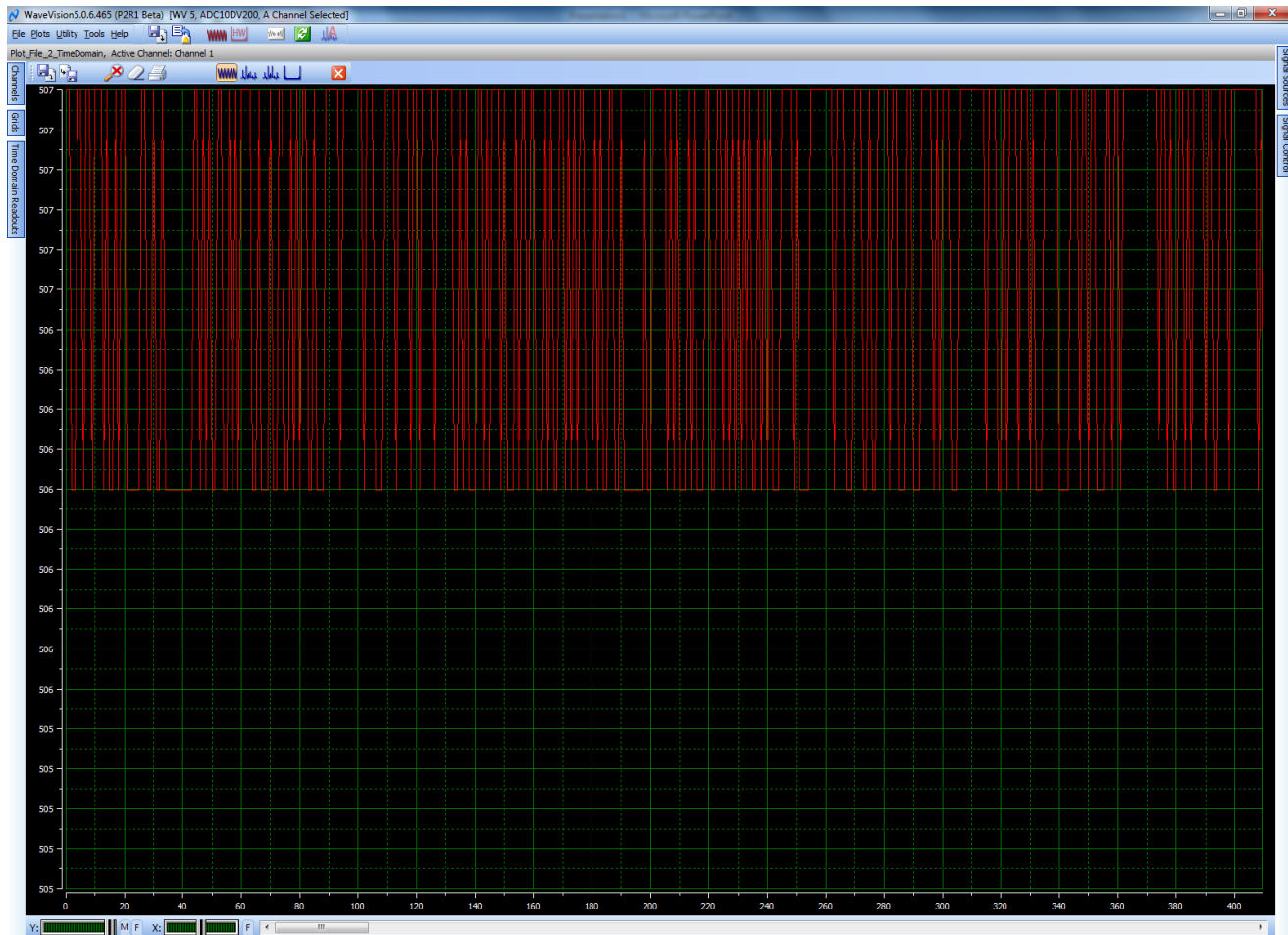
Close and re-start Wavevision5

- Make no changes to hardware setup
- Close Wavevision5
- Launch Wavevision5
- Wavevision5 software should now connect and recognize the ADC10DV200EB

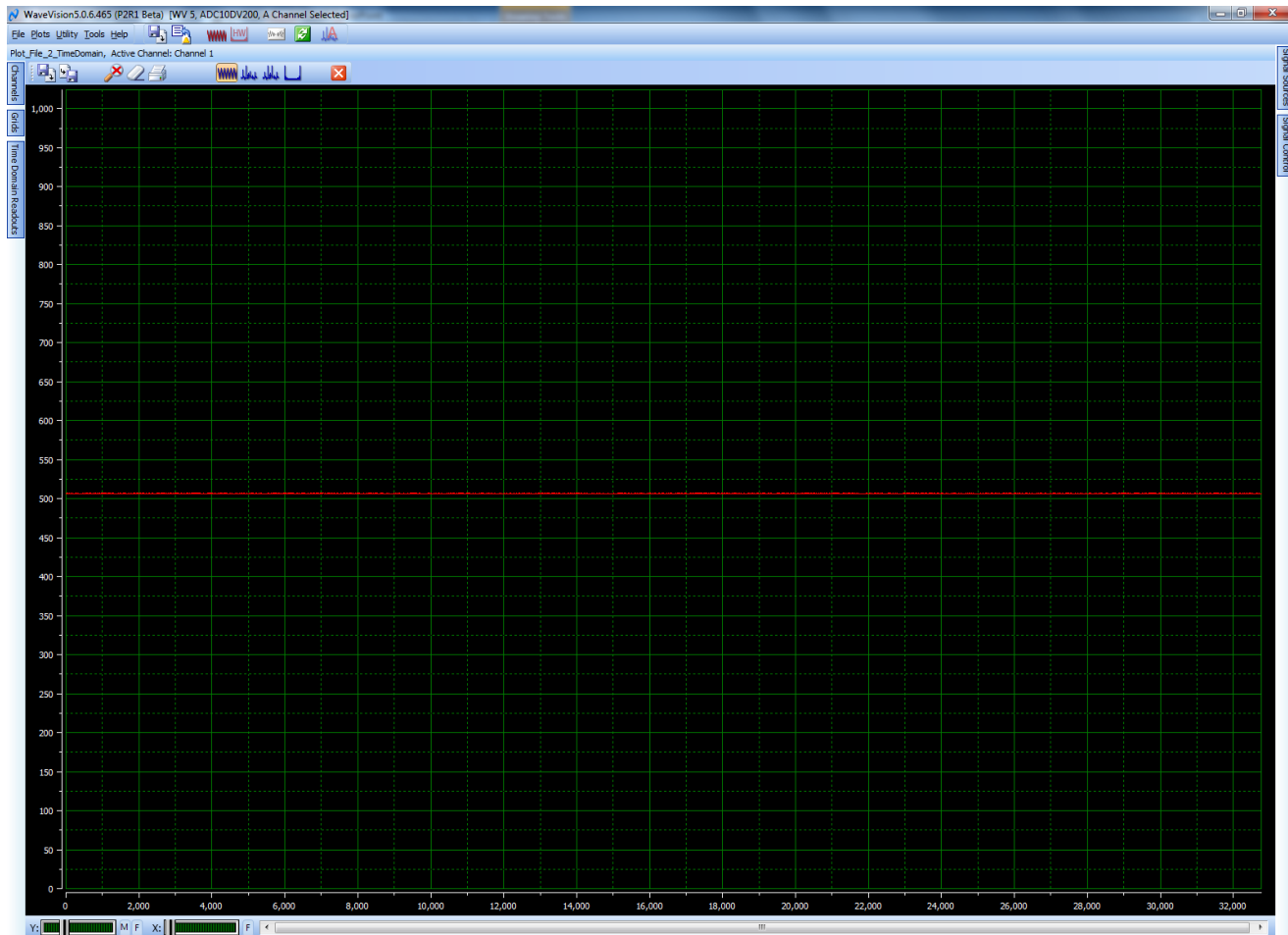
Launch WV5 second time – connected to board



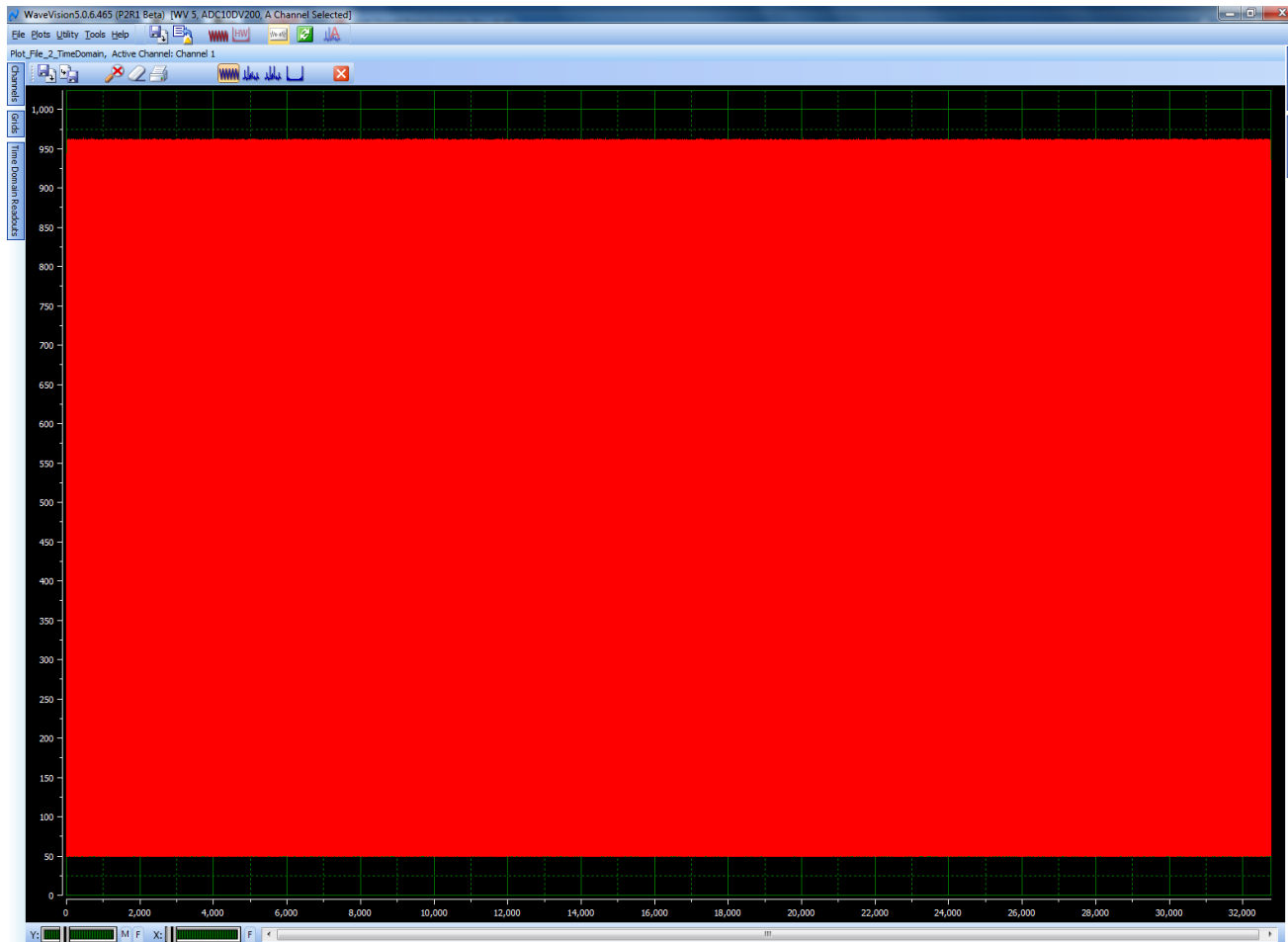
No input 4k samples



No input 32k samples - click on 'F' buttons in lower left to zoom full x and y scales



Time Domain 70 MHz Fin



FFT 70 MHz Fin

