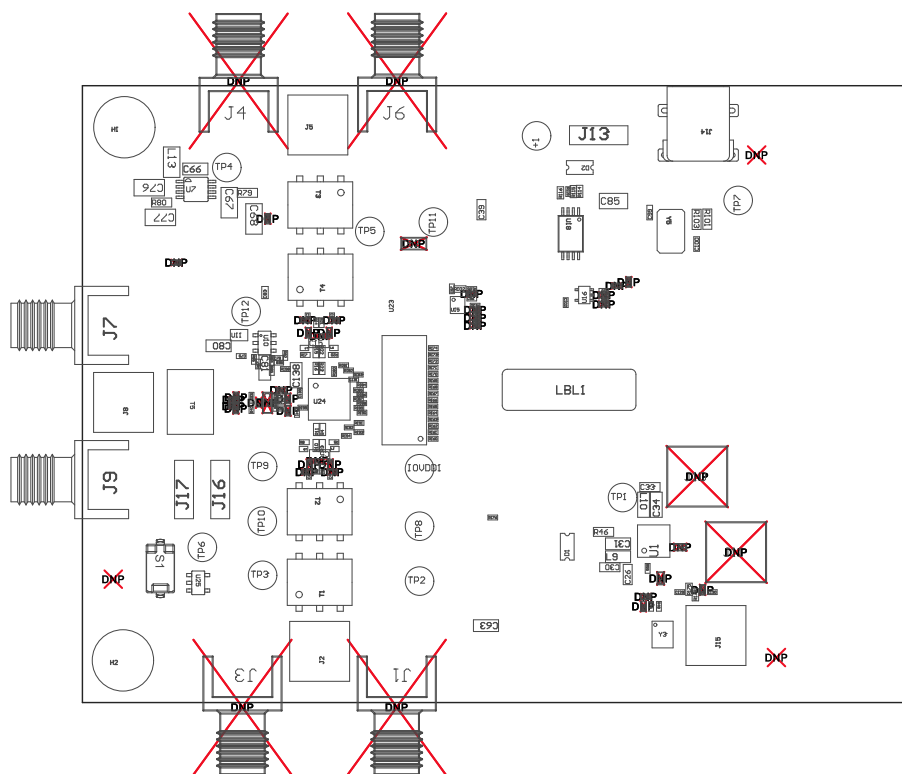


- Install label in silkscreened box after final wash (LBL2). Text shall be 8 pt font. Text shall be per the Label Table in the PDF schematic.
- Refer to ODB++ file for specific component location information.
- Assembly must be RoHS compliant and lead free
- These assemblies must comply with workmanship standards IPC-A-610 Class 2, unless otherwise specified.



COMPONENTS MARKED 'DNP' SHOULD NOT BE POPULATED.  
 ASSEMBLY VARIANT: 001

PCB VIEWED FROM TOP SIDE	BOARD #: DC104	REV: C	SVN REV: Not In VersionControl
	TID #: N/A		
PLOT NAME = Top Assembly Drawing	GENERATED : 4/13/2020 1:59:26 PM	TEXAS INSTRUMENTS	

