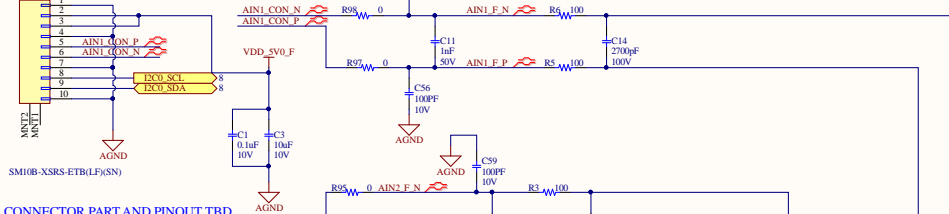


4-Channel, 24-Bit, Delta-Sigma ADC



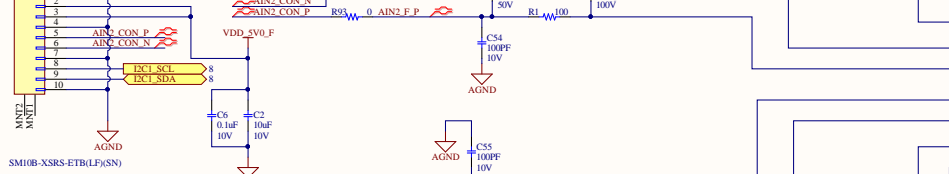
CONNECTOR PART AND PINOUT TBD

LEFT SENSOR



CONNECTOR PART AND PINOUT

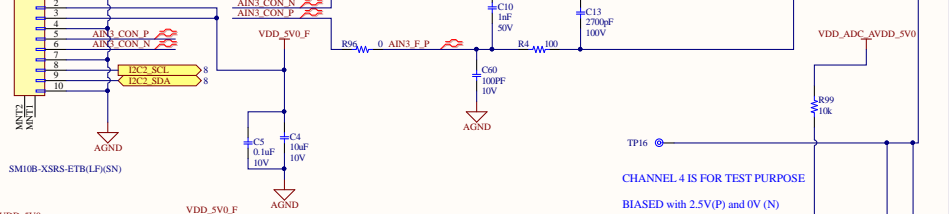
HR SENSOR



CONNECTOR PART AND PINOUT TBD

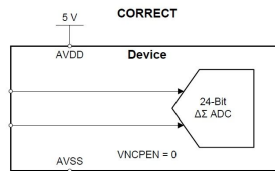
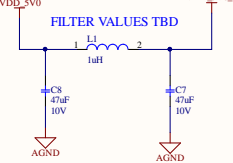
J1 1 RIGHT SENSOR

RIGHT SENSE

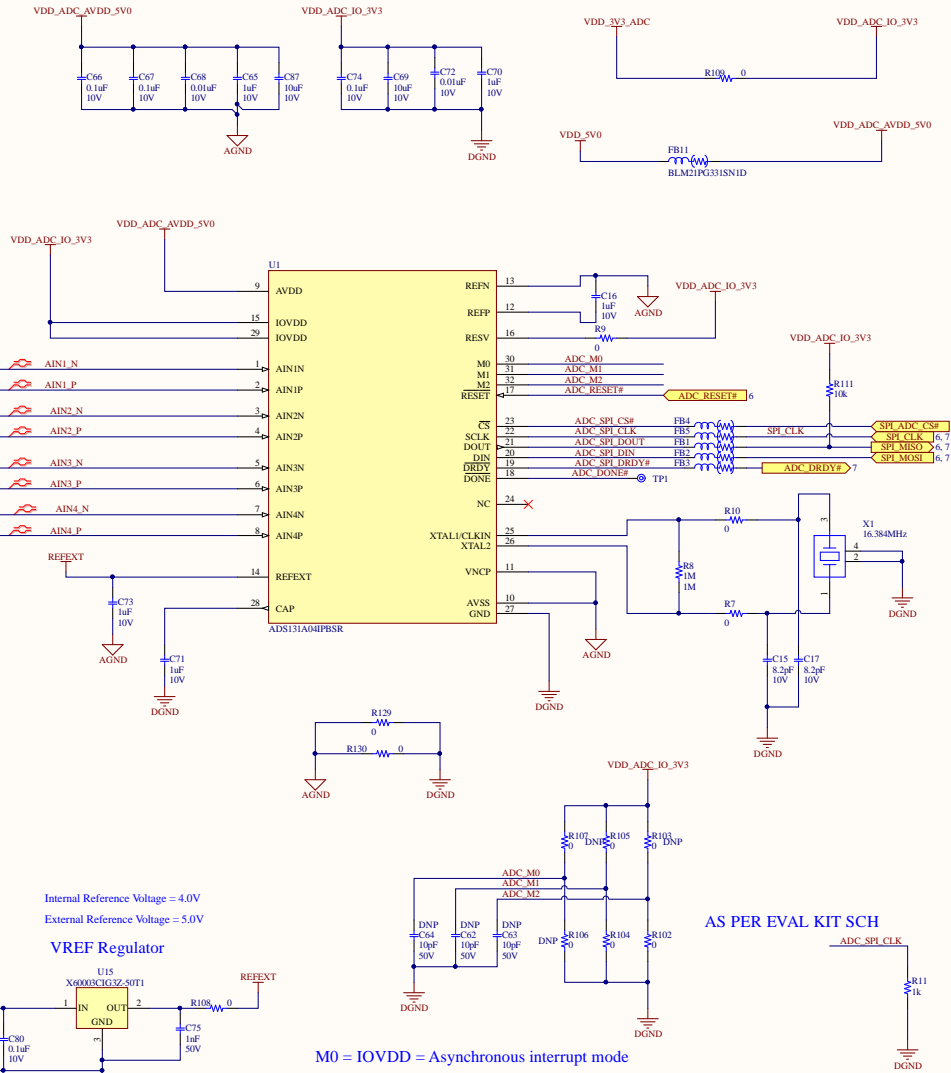


CHANNEL 4 IS FOR TEST PURPOSE

BIASED with 2.5V(P) and 0V (N)



Charge pump disabled with unipolar analog supply,
AVDD > 3.6 V.



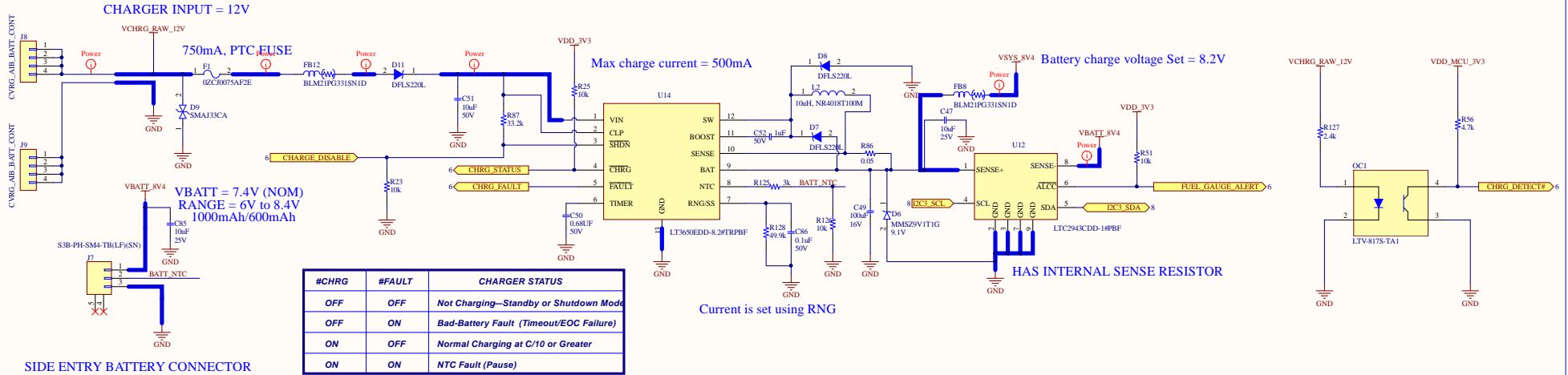
M0 = IOVDD = Asynchronous interrupt mode
M1 = GND = 24 bit device word
M2 = GND = Hamming code word validation off

ADC RESET pull down is placed on IO expander

POWER TRACES

BATTERY CHARGER AND FUEL GAUGE

CHARGER DETECT



ADC POWER (5V and 3.3V)

