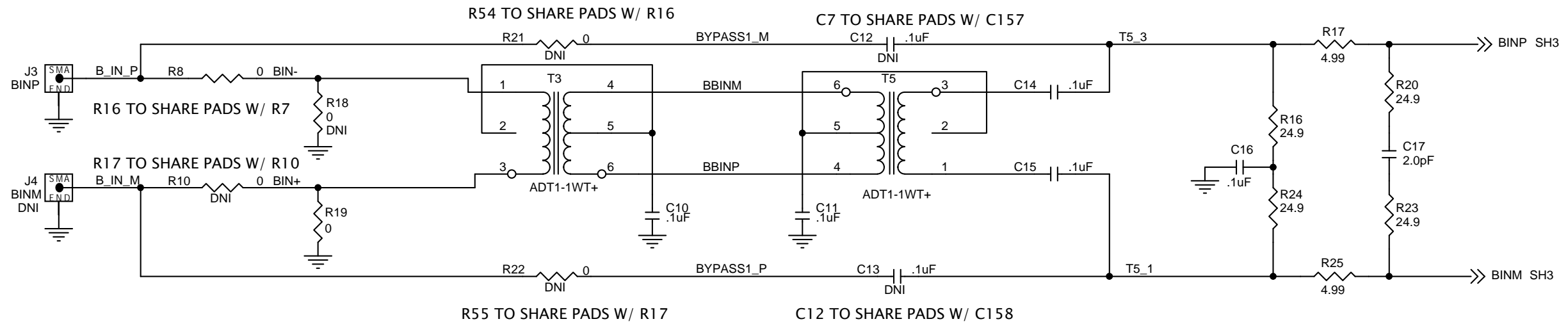


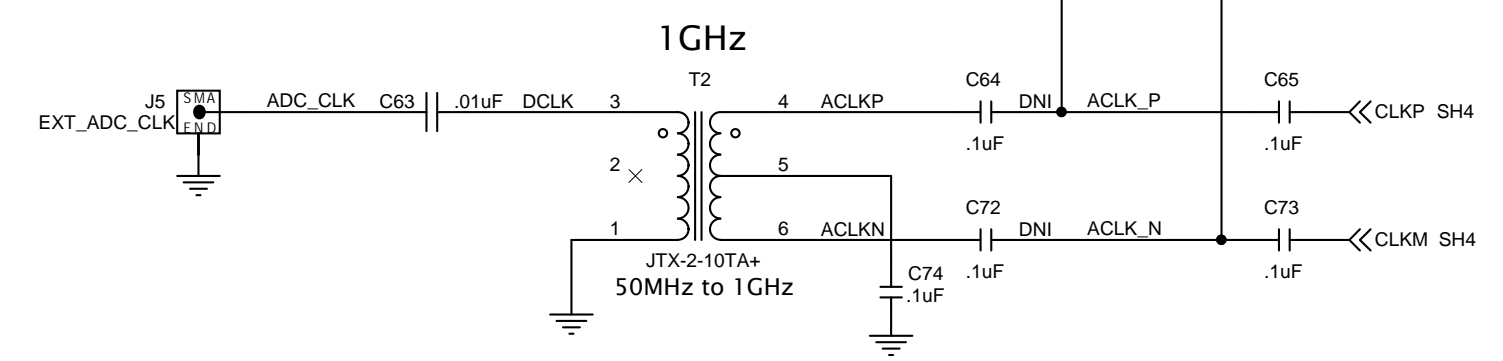
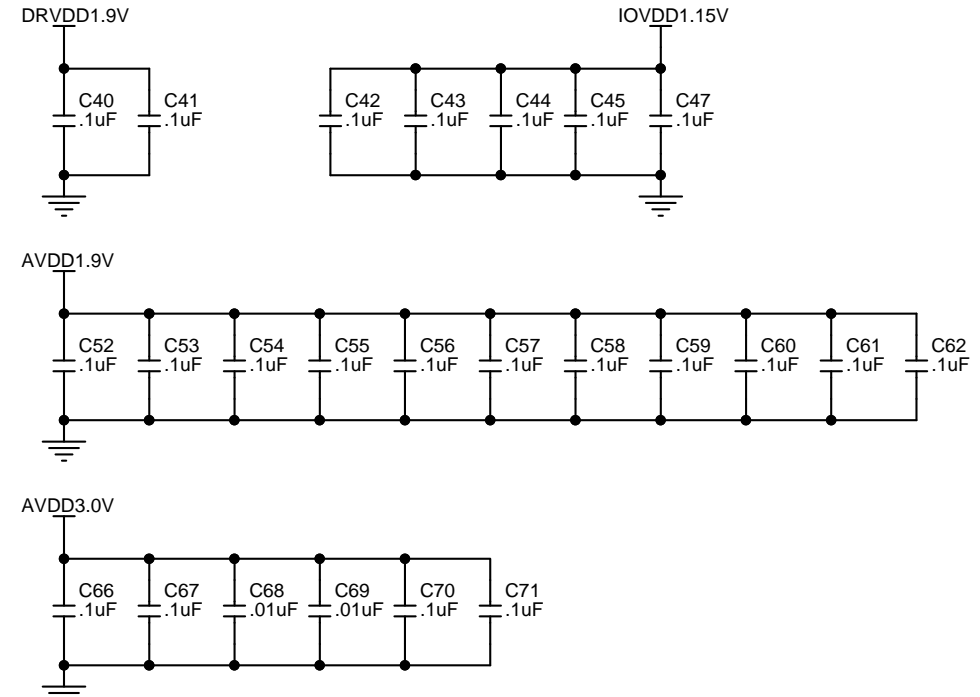
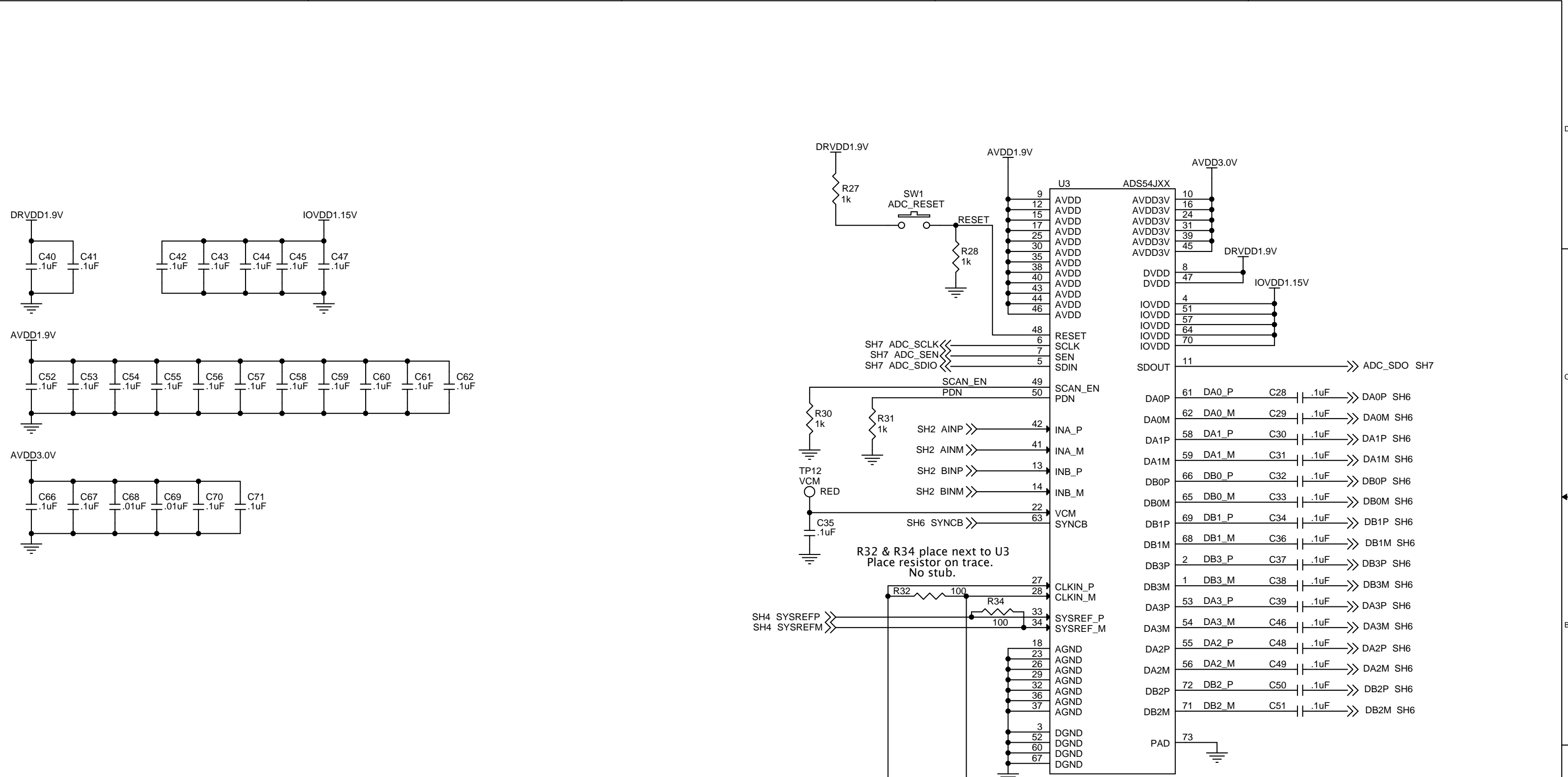
PLACE R1, R4, R7 & R10 ON THE TRACE - NO STUB



**TEXAS INSTRUMENTS**  
12000 TI Boulevard, Dallas, Texas 75243

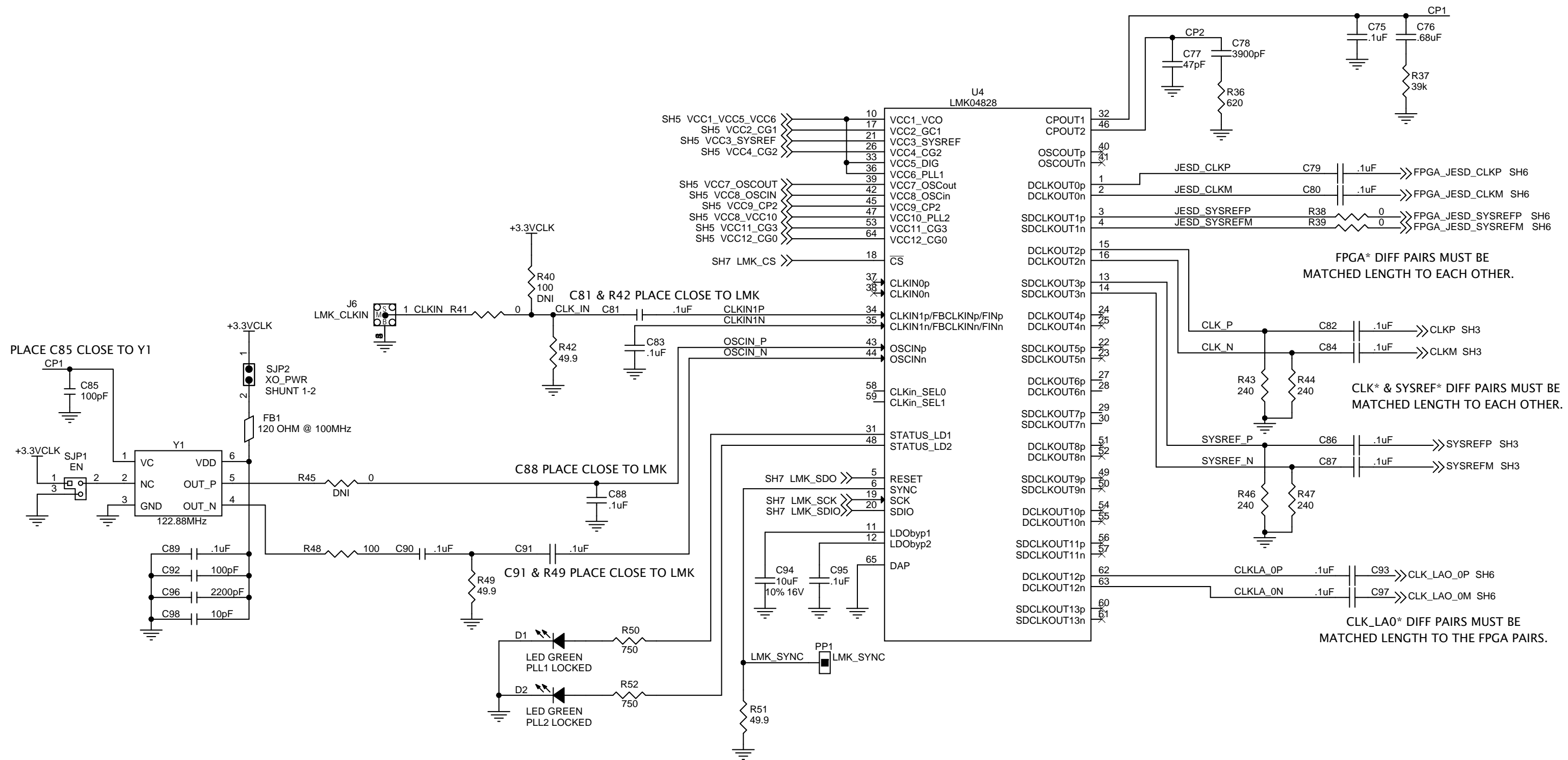
Title: **ANALOG IN**

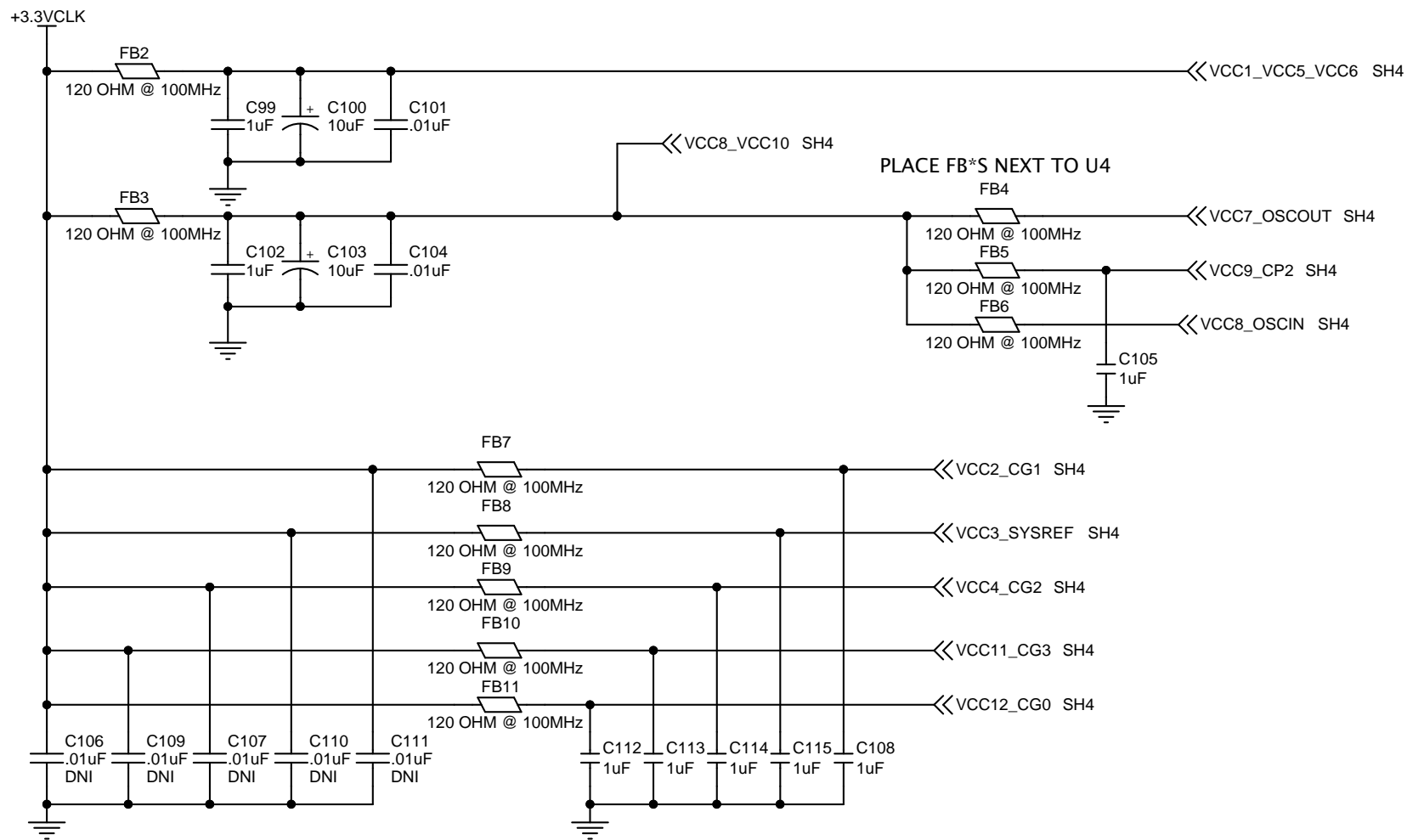
Size: <b>B</b>	Document Number: <b>SCH, ADS54JXX EVM</b>	Rev: <b>D</b>
Date: <b>Friday, September 25, 2015</b>	Sheet: <b>2</b>	of <b>9</b>



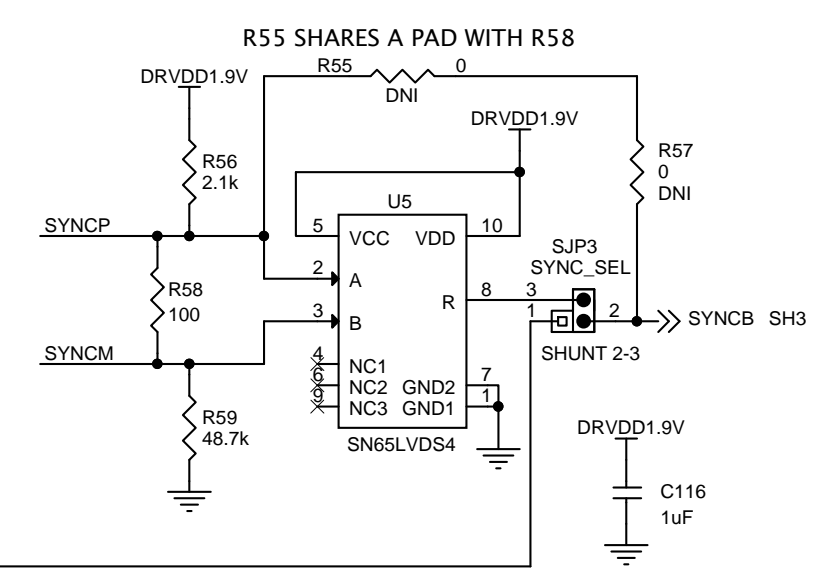
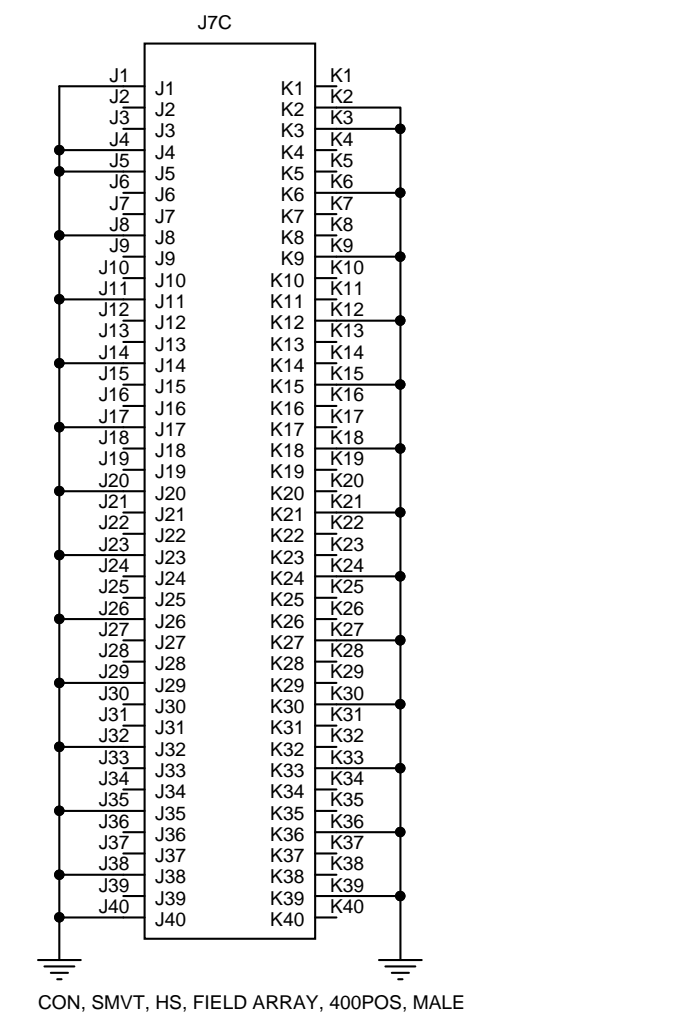
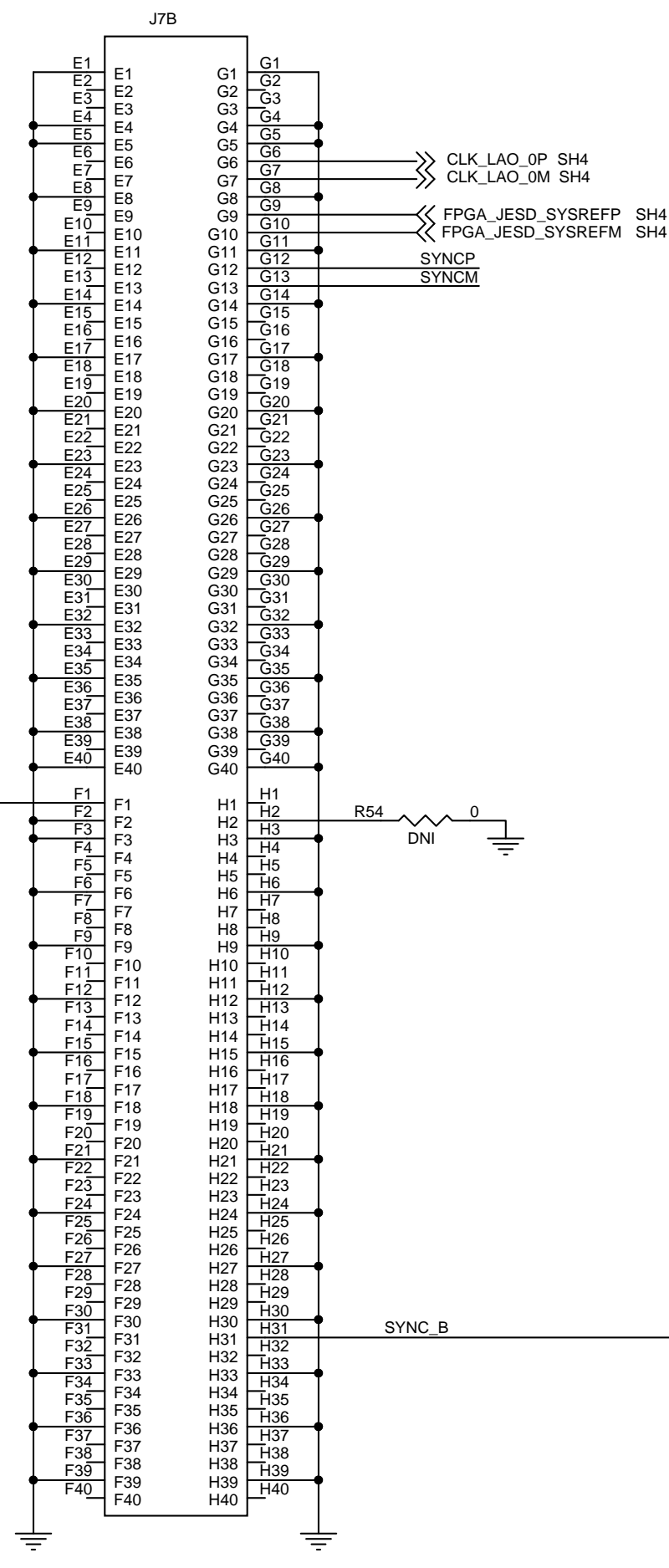
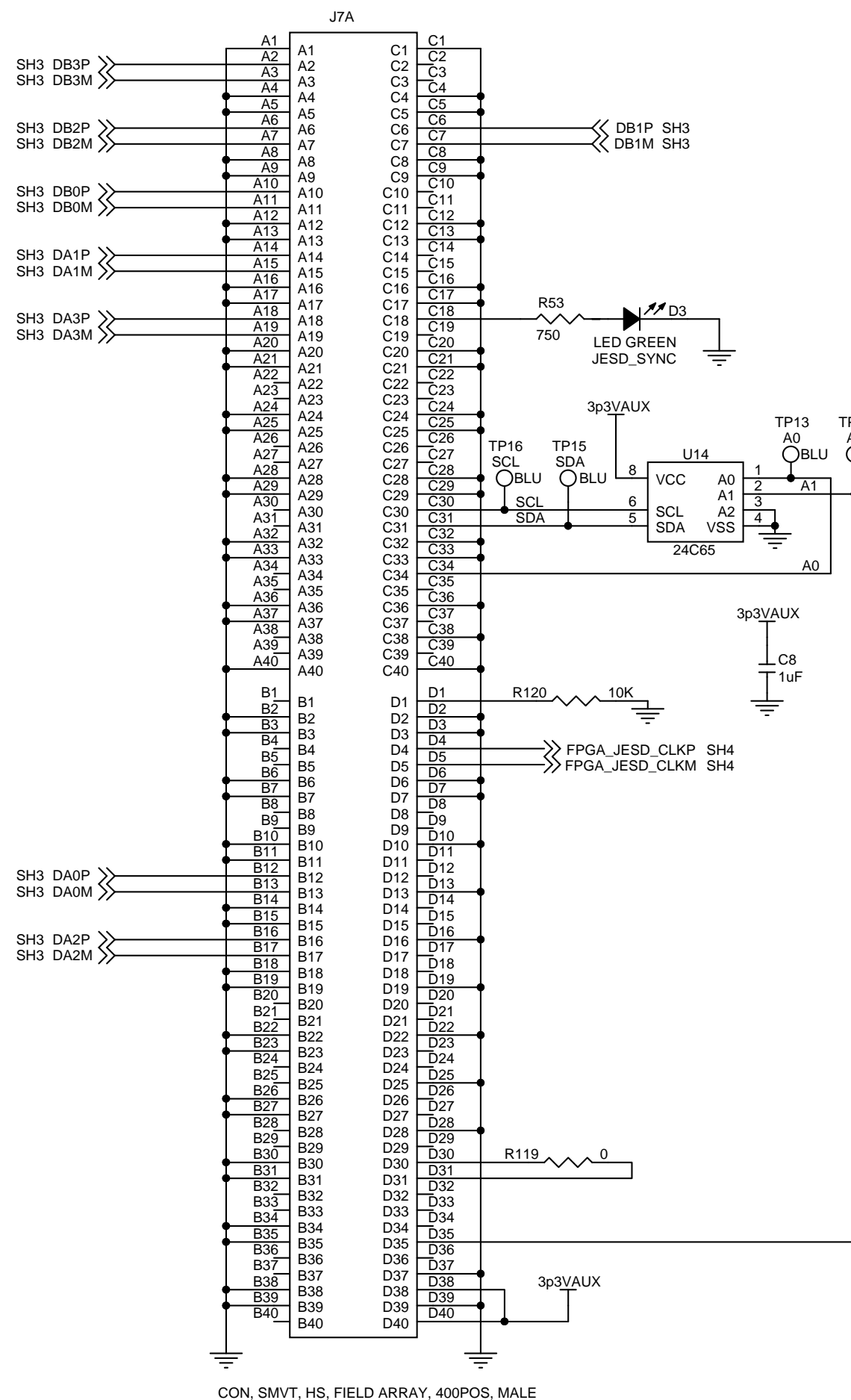
R32 & R34 place next to U3  
 Place resistor on trace.  
 No stub.

**TEXAS INSTRUMENTS**  
 Title: **ADC**  
 Size: **B** Document Number: **SCH, ADS54JXX EVM** Rev: **D**  
 Date: **Friday, September 18, 2015** Sheet: **3** of **9**





Title		
<b>LMK POWER</b>		
Size	Document Number	Rev
<b>B</b>	<b>SCH, ADS54JXX EVM</b>	<b>D</b>
Date:	Friday, September 18, 2015	Sheet 5 of 9

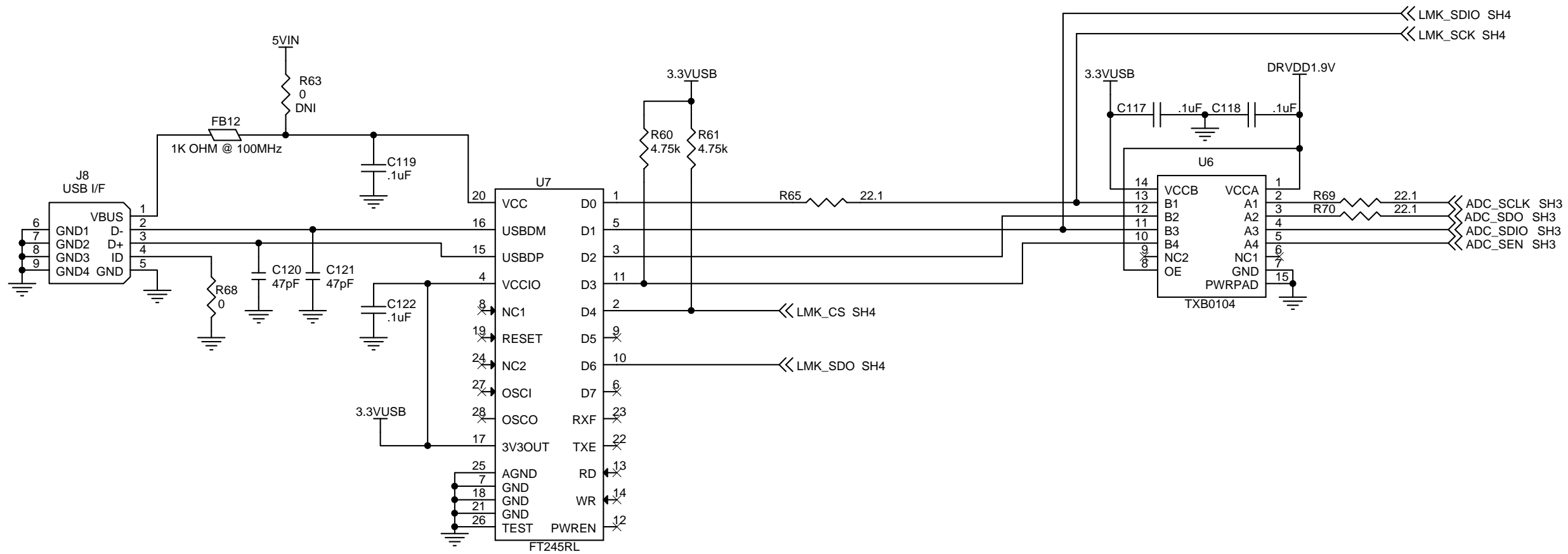


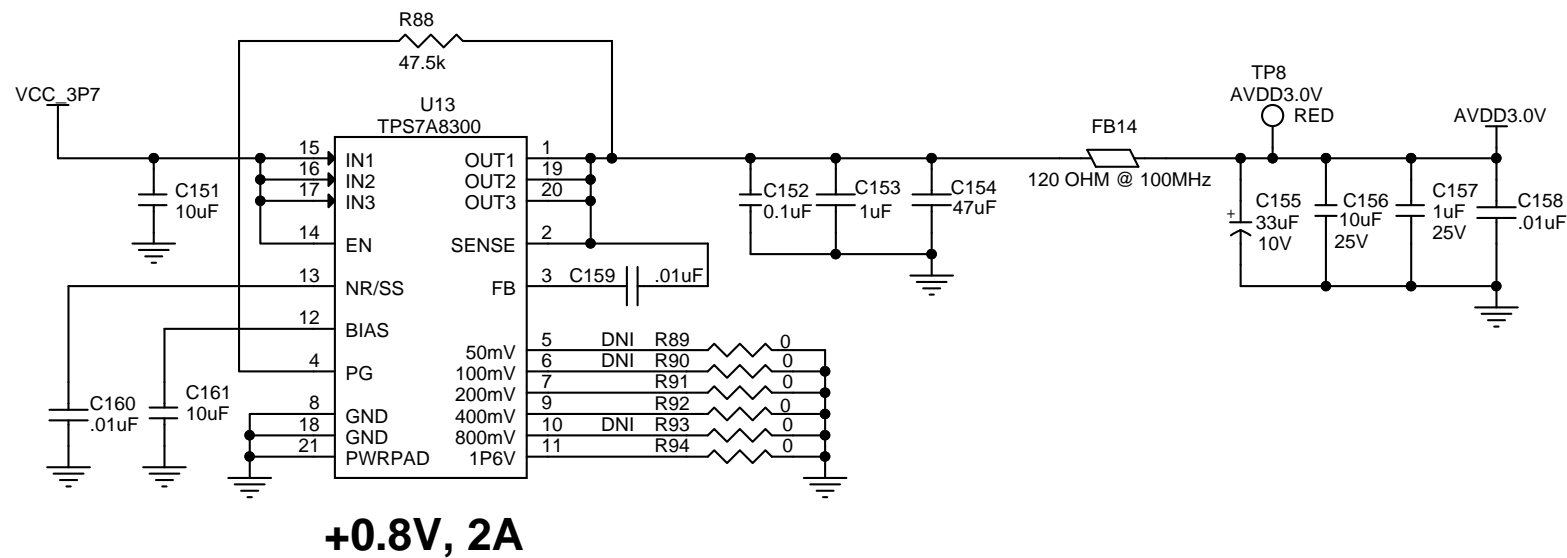
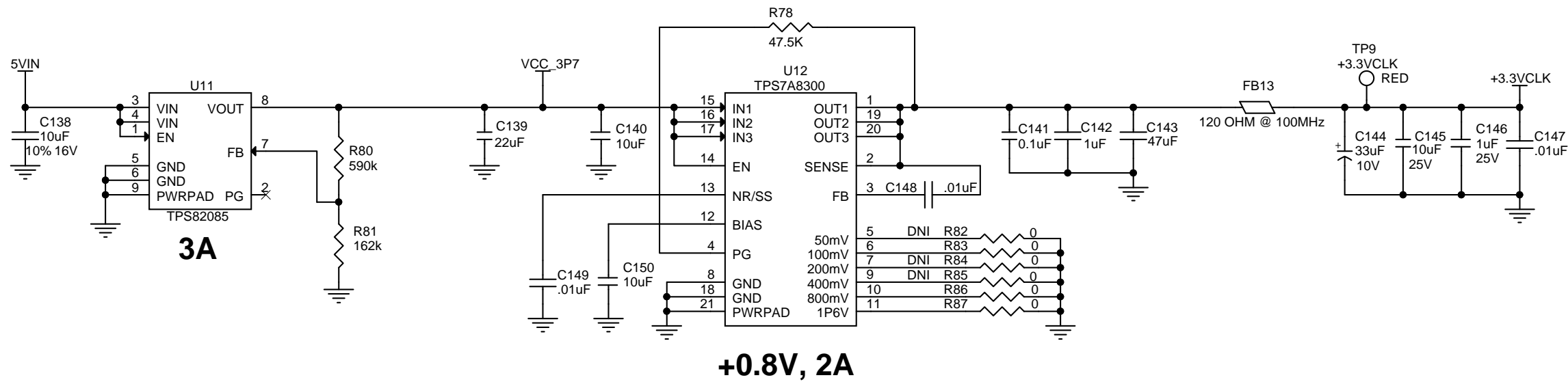
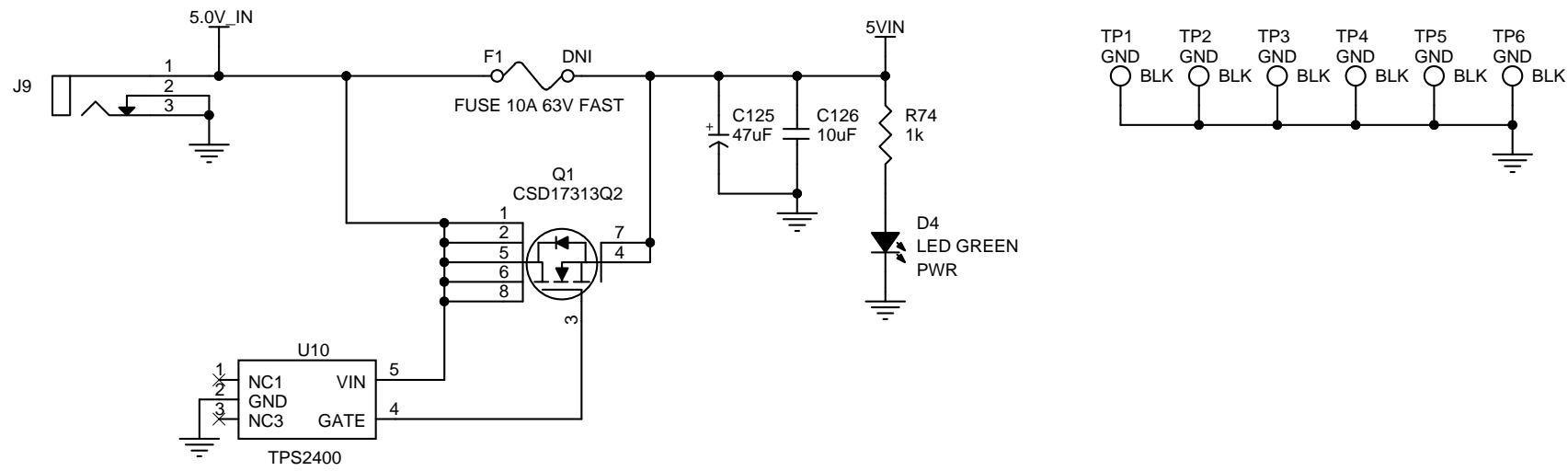
**TEXAS INSTRUMENTS**

Title: **OUTPUT - FMC CONNECTOR**

Size **B** | Document Number: **SCH, ADS54JXX EVM** | Rev **D**

Date: Friday, September 18, 2015 | Sheet 6 of 9





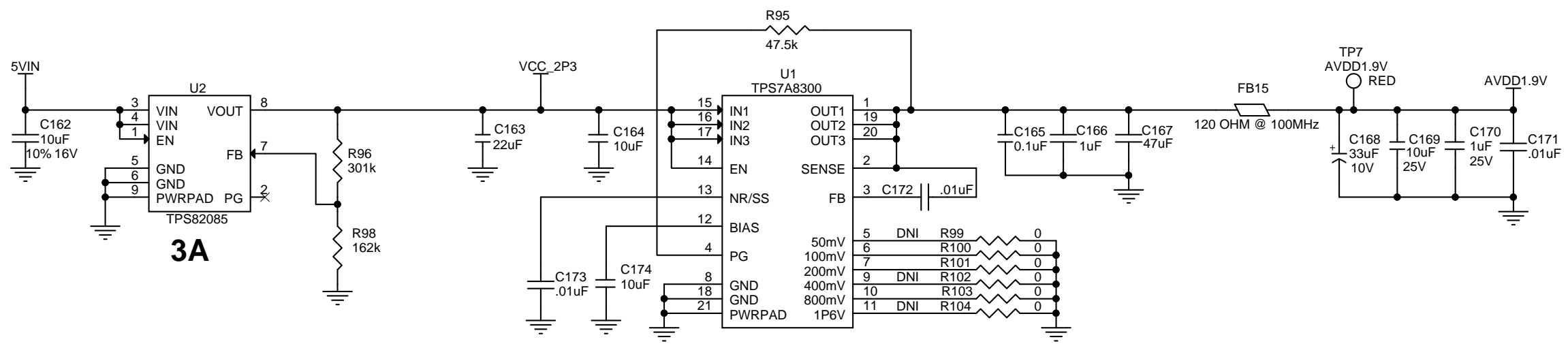
**TEXAS INSTRUMENTS**

Title: **MAIN POWER**

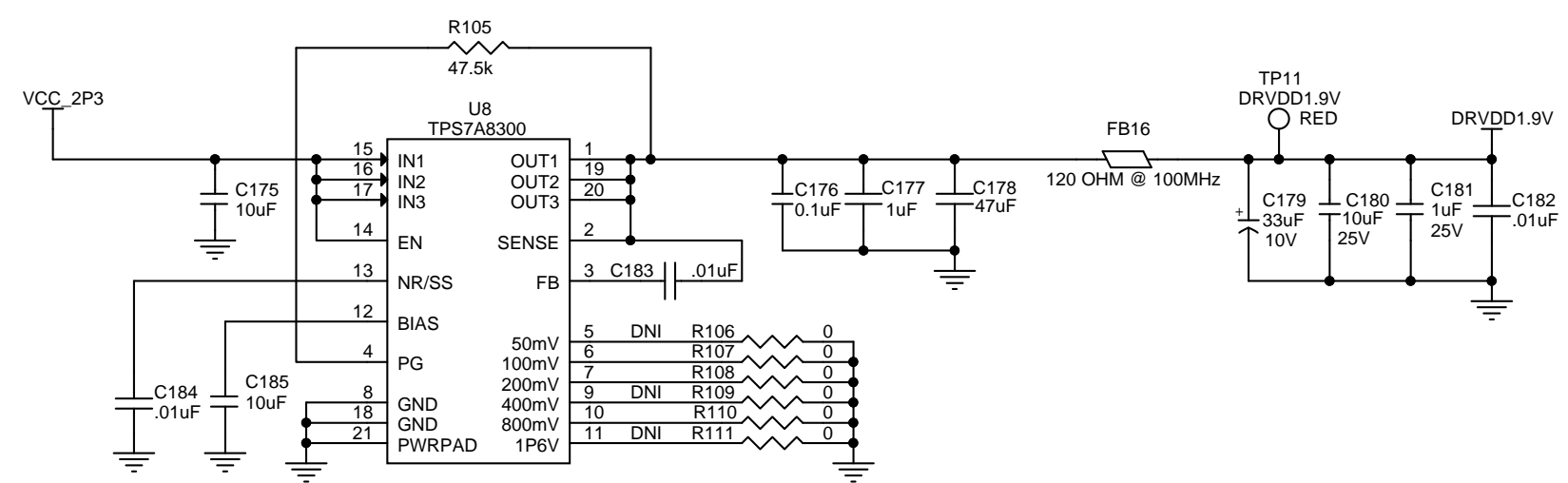
Size **B** Document Number **SCH, ADS54JXX EVM** Rev **D**

Date: Friday, September 18, 2015 Sheet 8 of 9

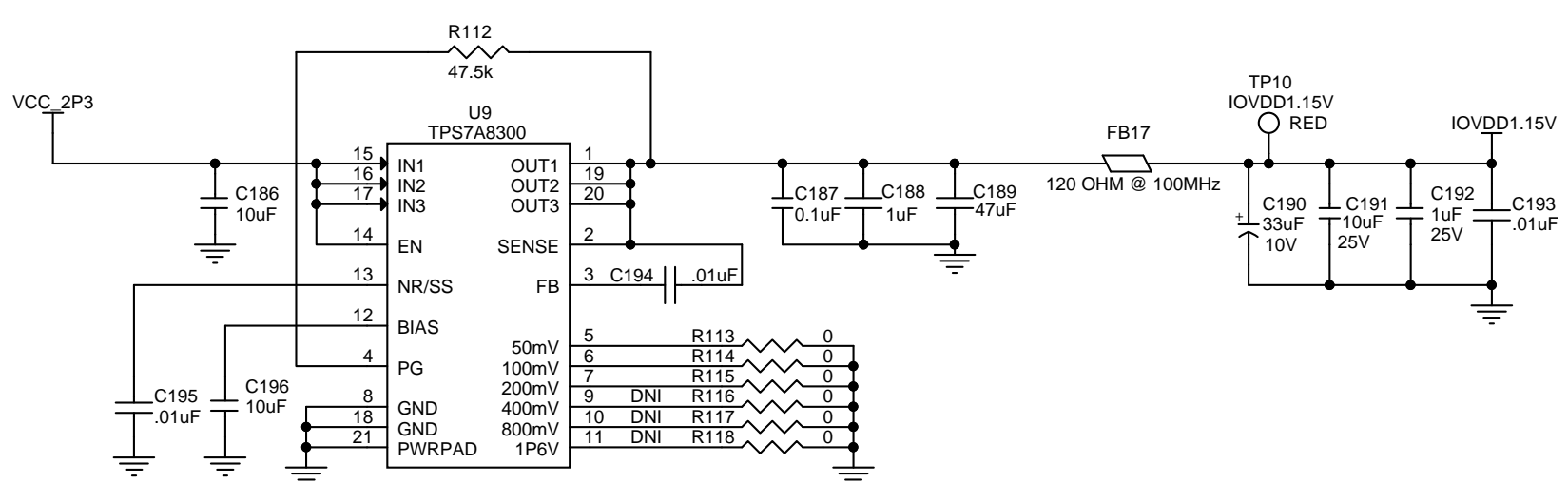




**+0.8V, 2A**

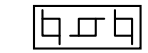


**+0.8V, 2A**

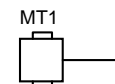

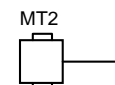




**+0.8V, 2A**

BARE BOARD, ADS54JXX



**MECHANICAL PARTS**

- 
 STANDOFF, FEMALE, 4-40 X 1 3/16", AL
- 
 SCREW, 4-40 X 3/4", PHIL, SS
- 
 STANDOFF, FEMALE, 4-40 X 1 3/16", AL
- 
 SCREW, 4-40 X 3/4", PHIL, SS



**TEXAS INSTRUMENTS**

Title		
<b>POWER 3.3V</b>		
Size	Document Number	Rev
<b>B</b>	<b>SCH, ADS54JXX EVM</b>	<b>D</b>
Date:	Friday, September 18, 2015	Sheet 9 of 9