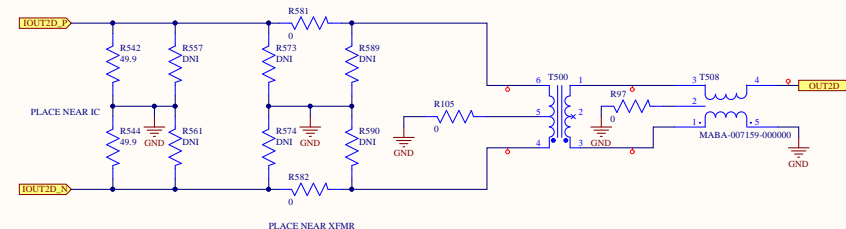
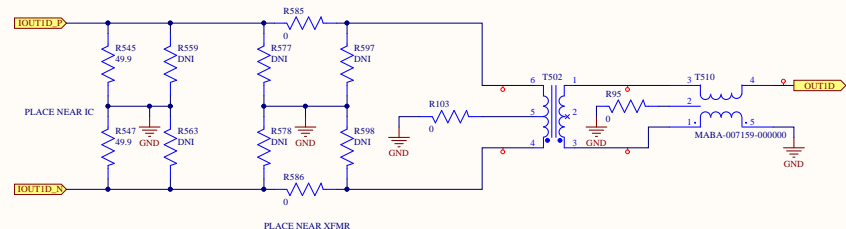
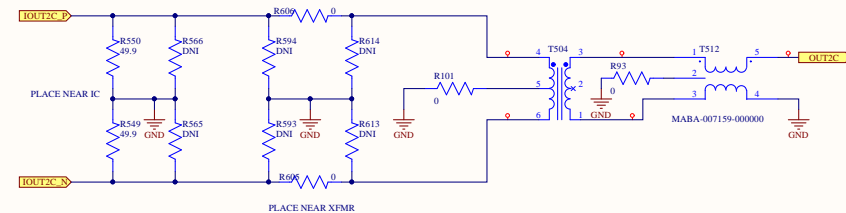
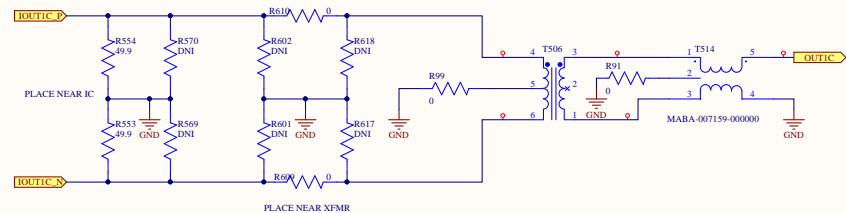
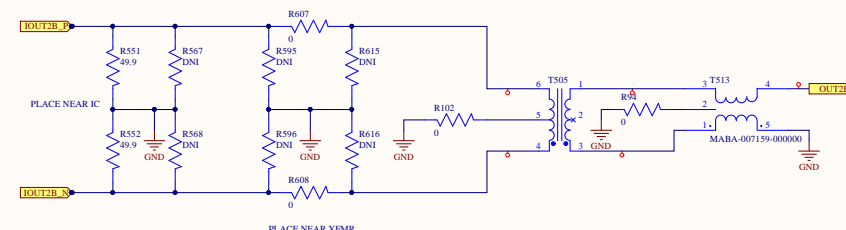
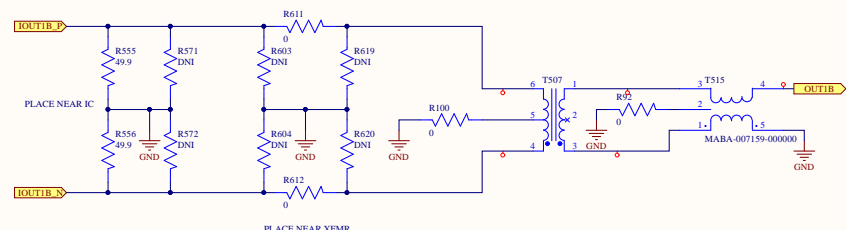
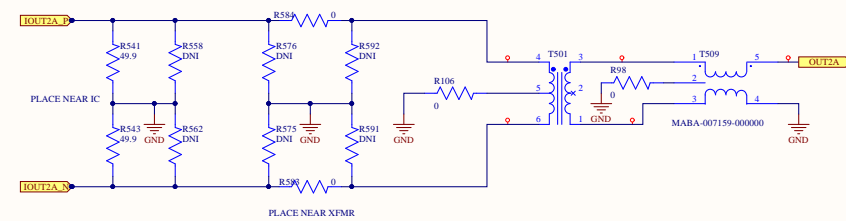
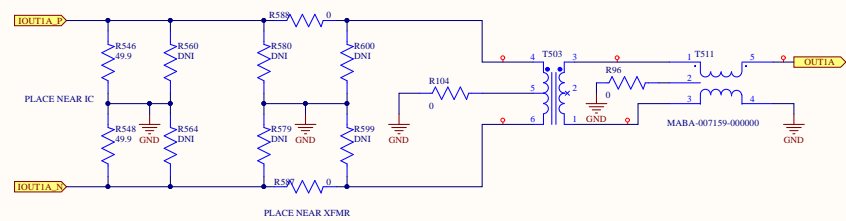
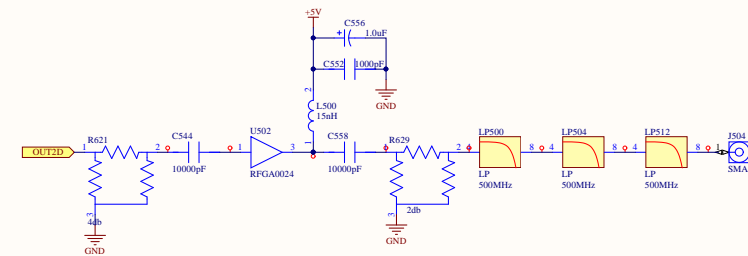
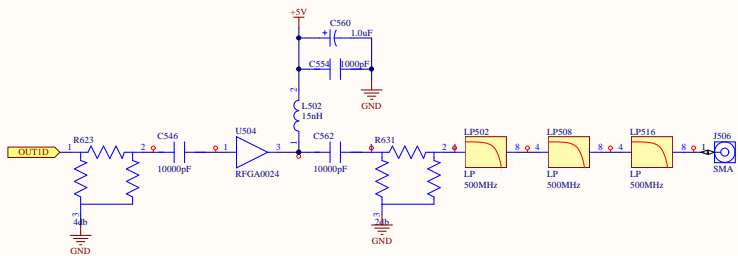
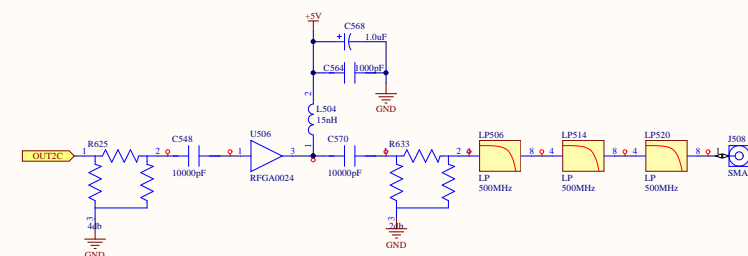
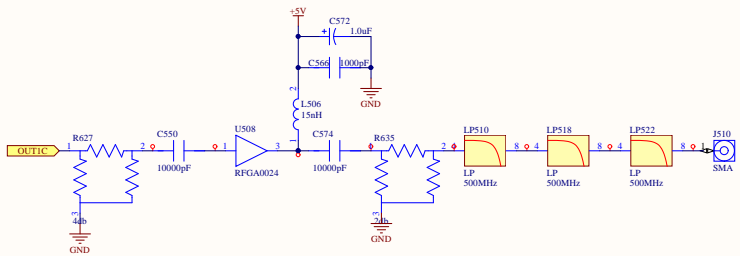
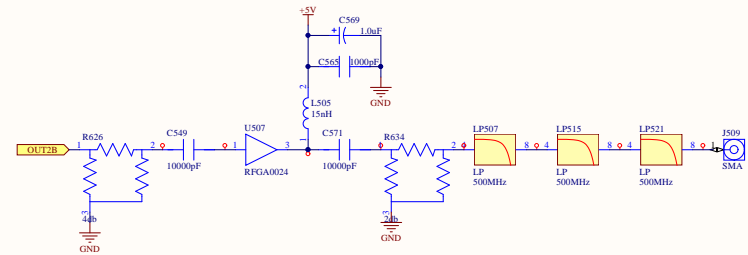
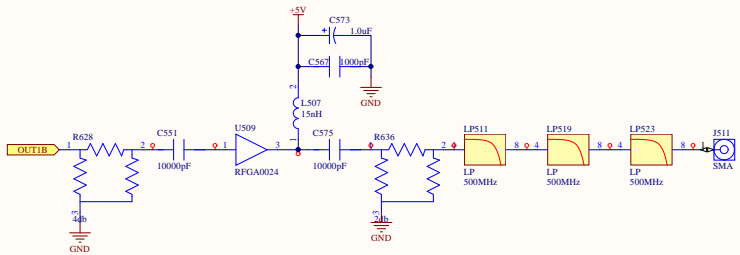
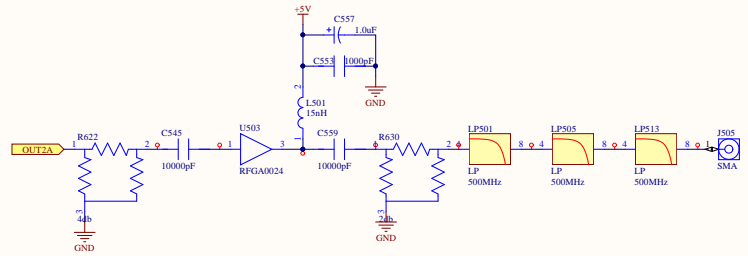
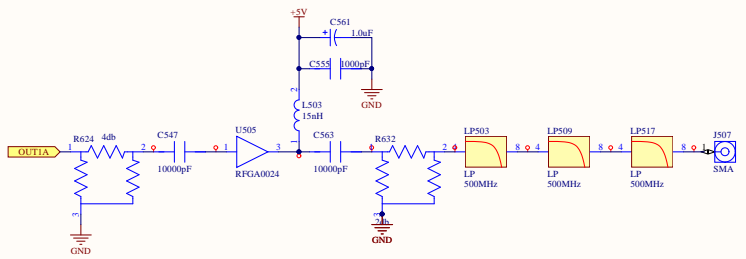
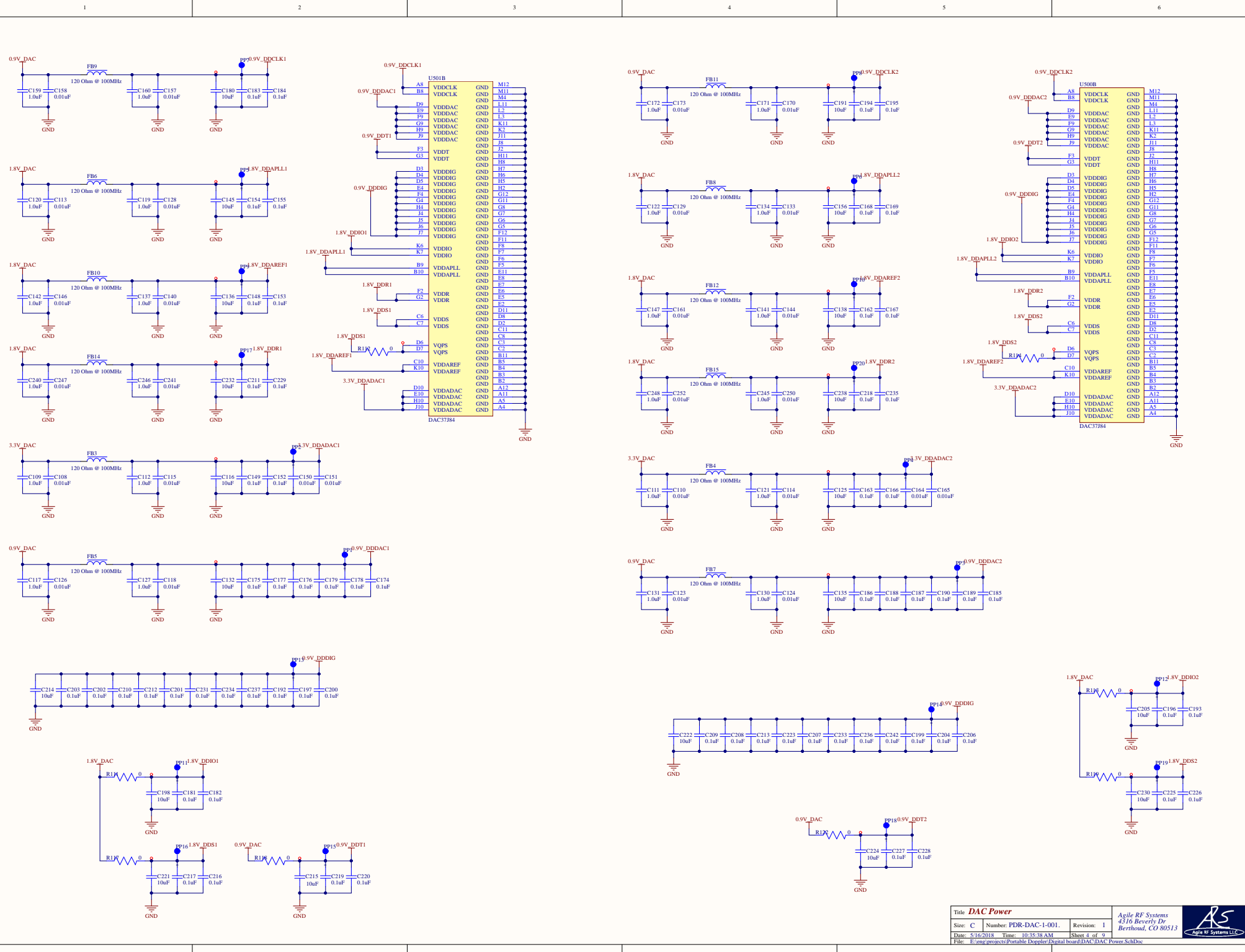
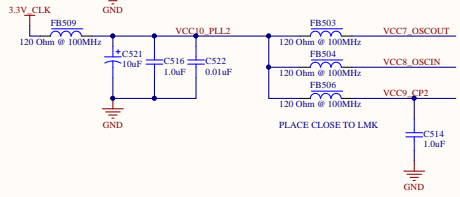
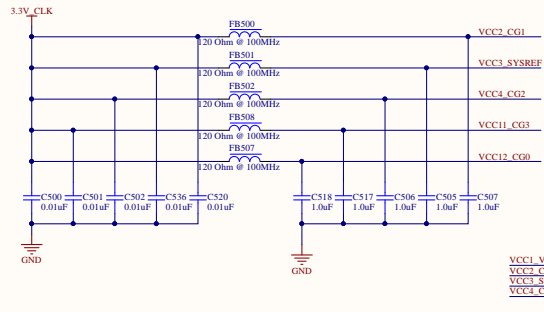
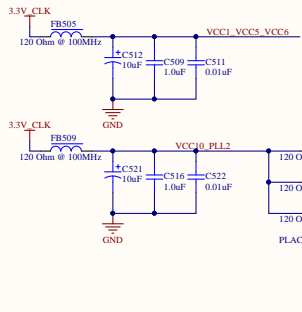
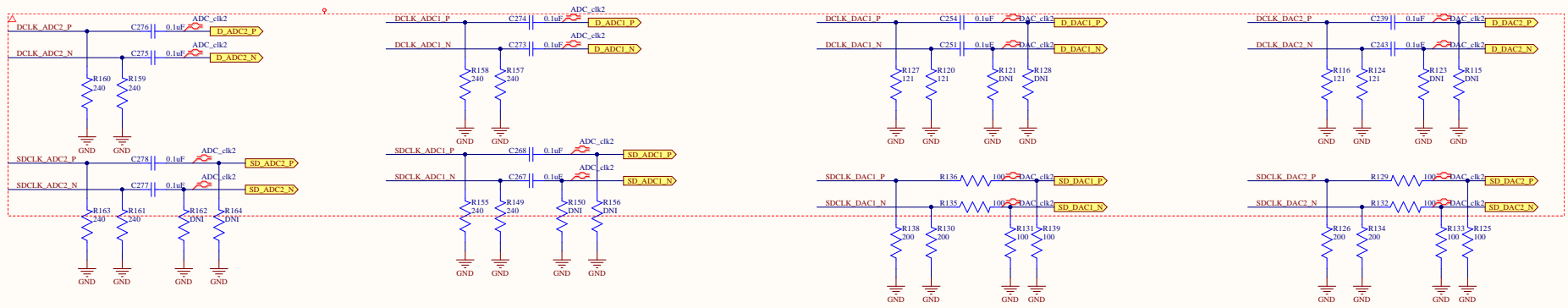


Rev	Reason For Change	Date
1	Engineering Release	15 May, 2018

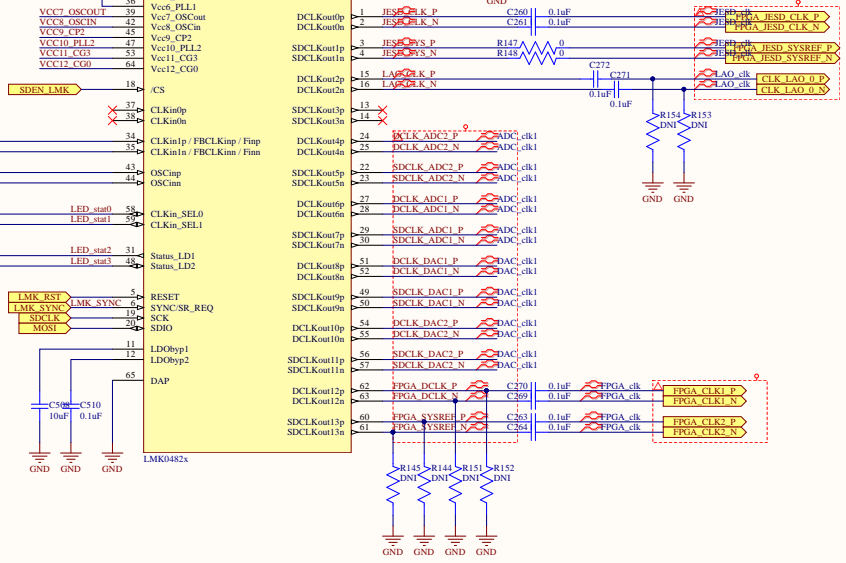
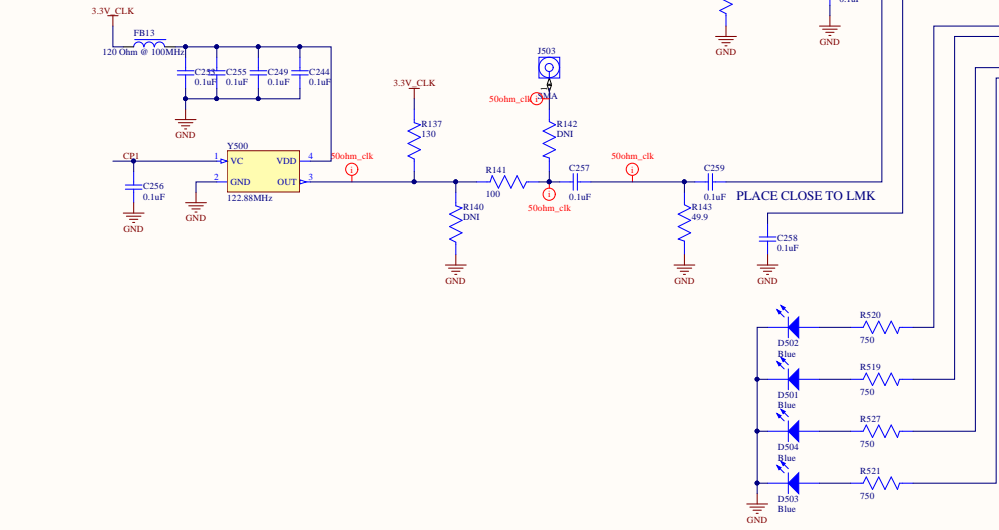
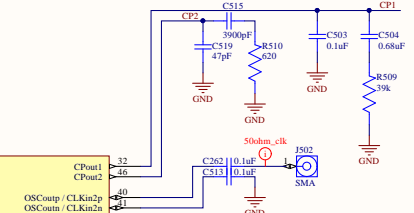








Pin	Signal
10	VCC1, VCC5, VCC6
17	Vec1, VCO
21	Vec2, CG1
26	Vec3, SysRef
33	Vec4, CG2
36	Vec5, DIG
39	Vec6, PLL1
42	Vec7, OSCout
45	Vec8, OSCin
47	Vec9, CP2
53	Vec10, PLL2
64	Vec11, CG3
64	Vec12, CG0



Pin	Signal
18	/CS
21	CLKin0p
22	CLKin0n
24	CLKin1p / FBCLKimp / Finp
25	CLKin1n / FBCLKimn / Finm
43	OSCImp
44	OSCCm
58	LED_stat0
59	LED_stat1
59	LED_stat2
59	LED_stat3
5	RESET
6	SYNC_SR_REQ
10	SCK
11	SDIO
11	LD0byp1
12	LD0byp2
65	DAP

A

B

C

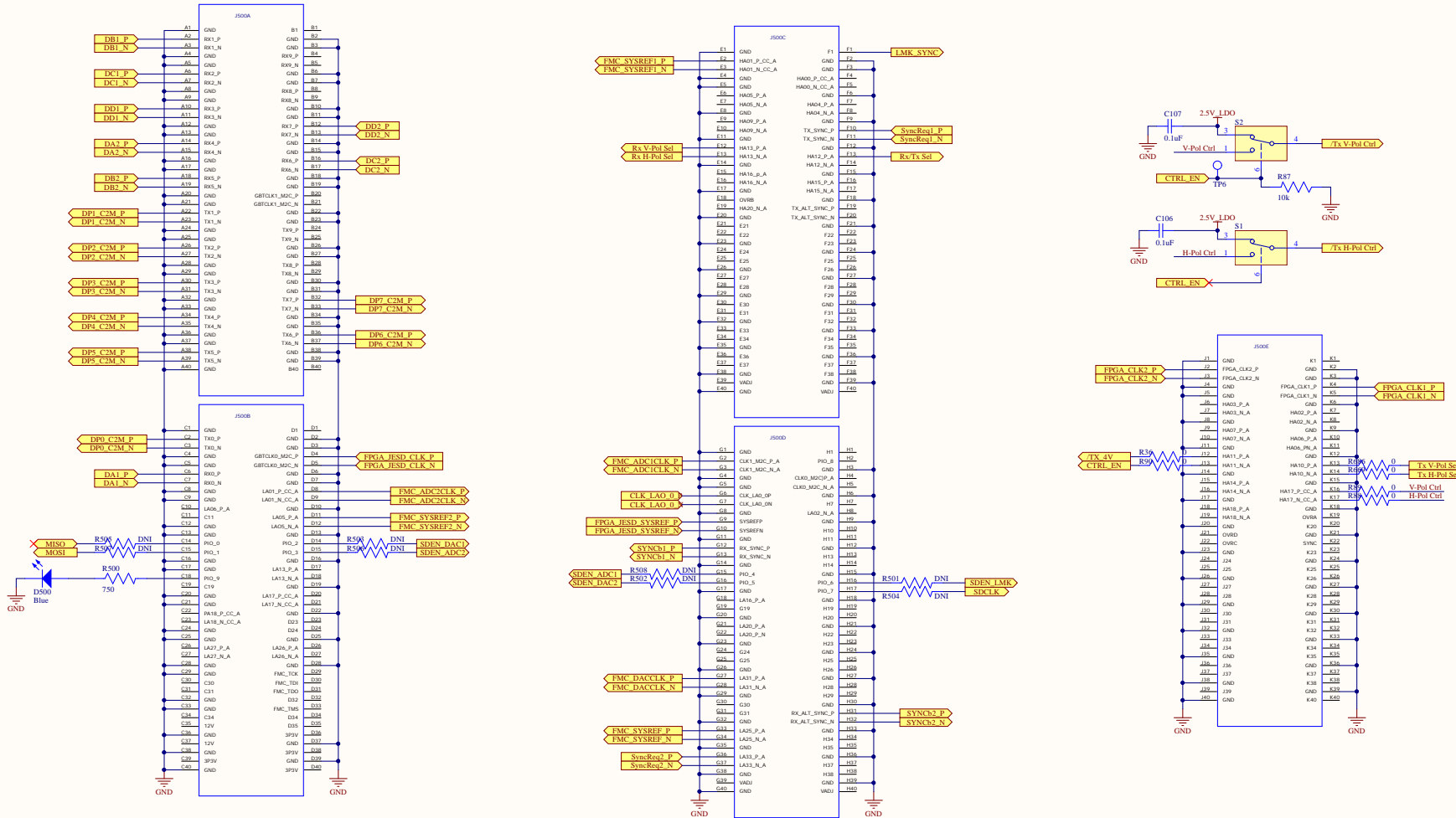
D

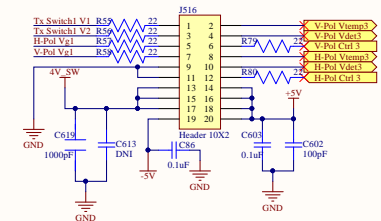
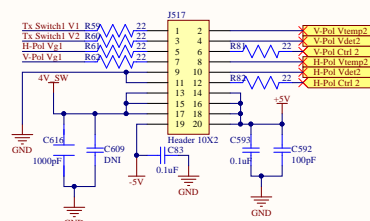
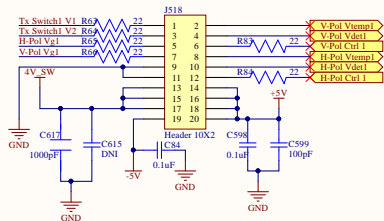
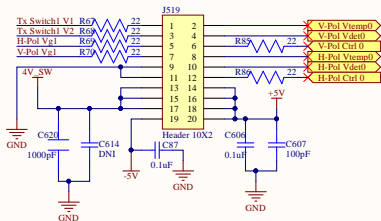
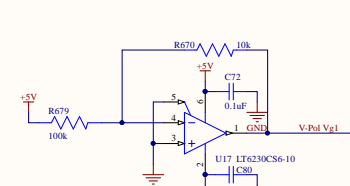
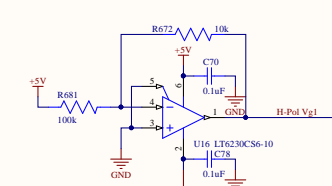
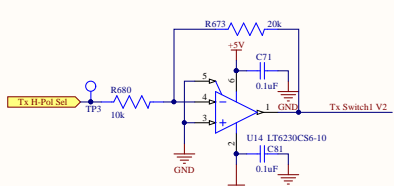
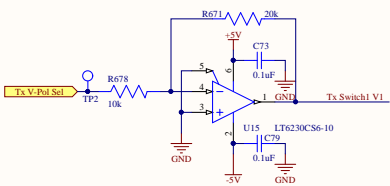
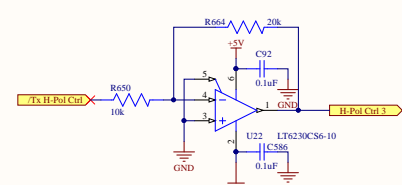
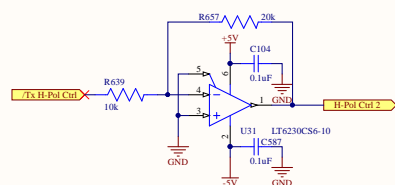
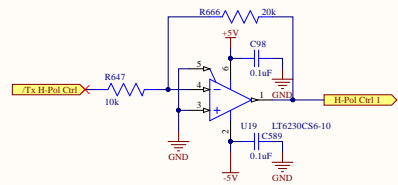
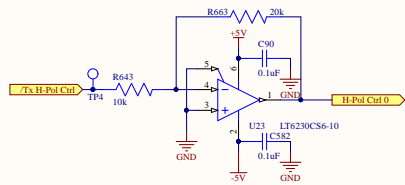
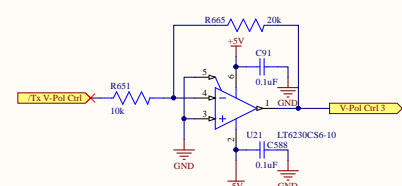
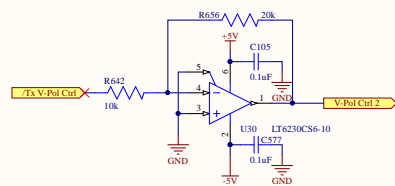
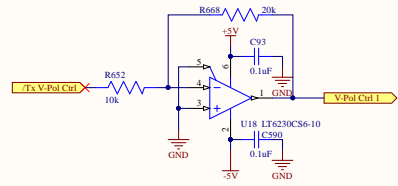
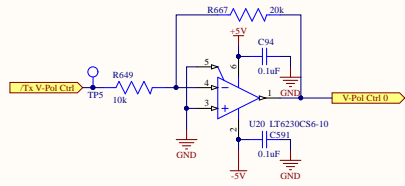
A

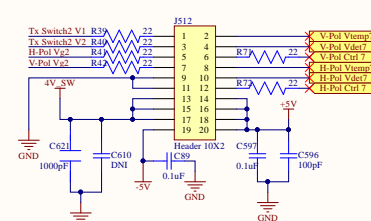
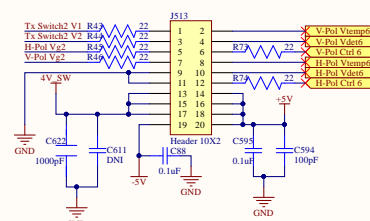
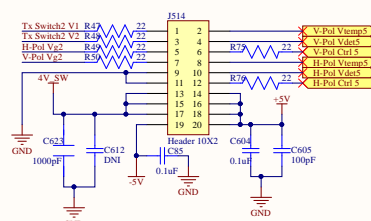
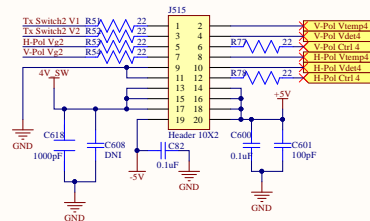
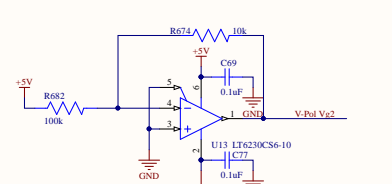
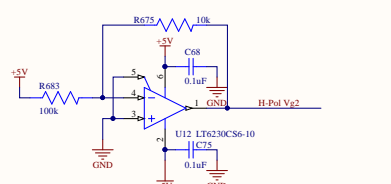
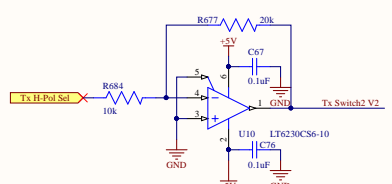
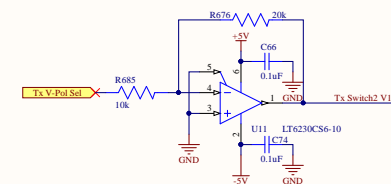
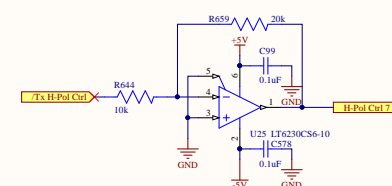
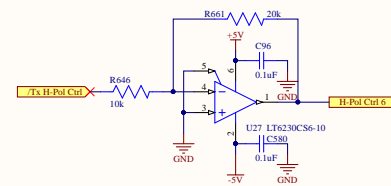
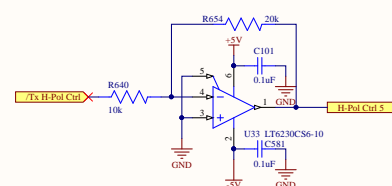
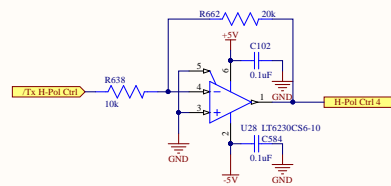
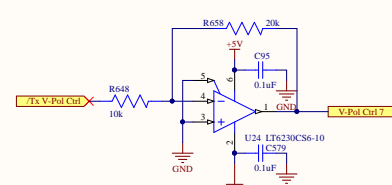
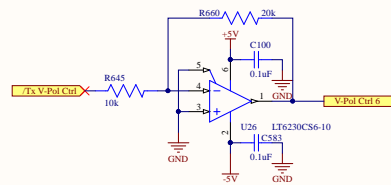
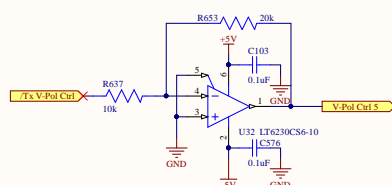
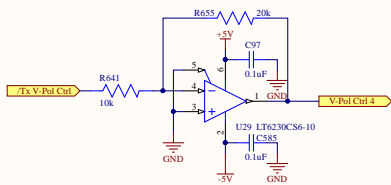
B

C

D







FIND CAPS WITH CORRECT VOLTAGE RATING

