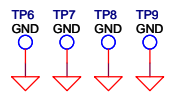
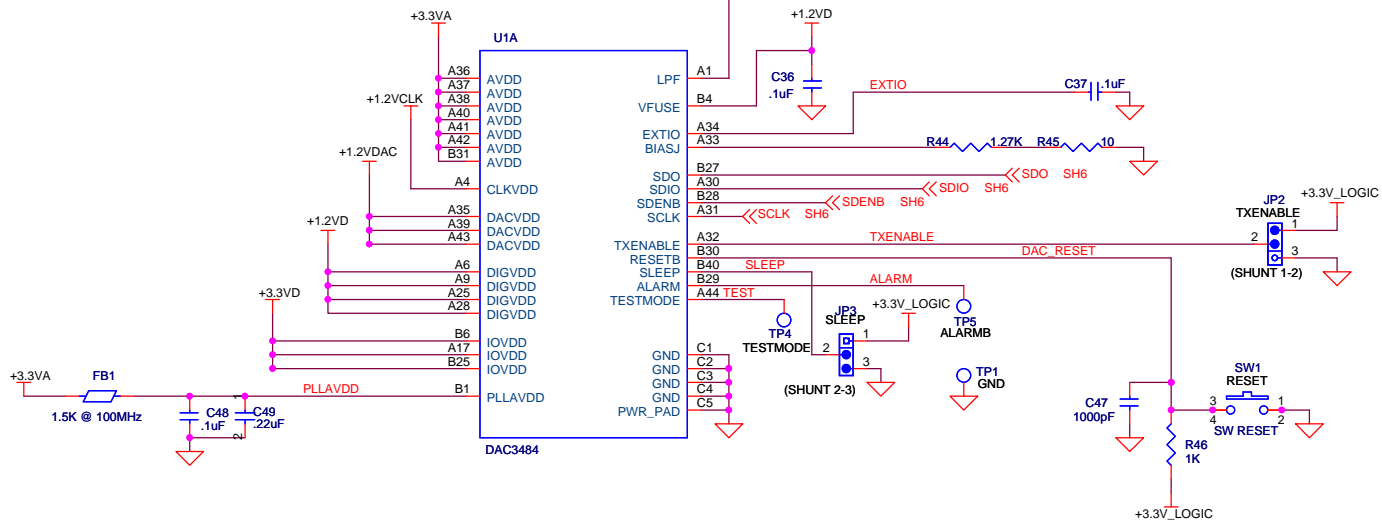
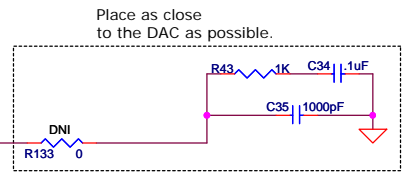
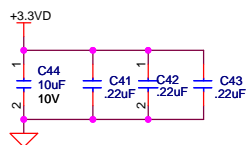
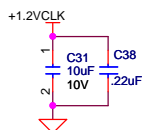
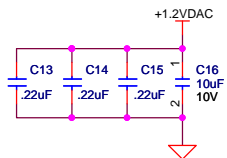
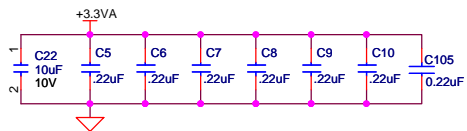
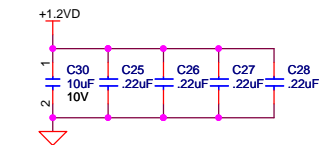


NOTES:
 1) DNI = DO NOT INSTALL

TEXAS INSTRUMENTS

| | | | |
|-----------|-----------|--------------------|-----------------------------|
| Title | | DAC348X EVM | |
| Size | B | Document Number | DAC |
| Drawn: | L. Nguyen | Rev | F |
| Engineer: | K. Hsia | Date: | Wednesday, January 25, 2012 |
| | | Sheet | 1 of 7 |



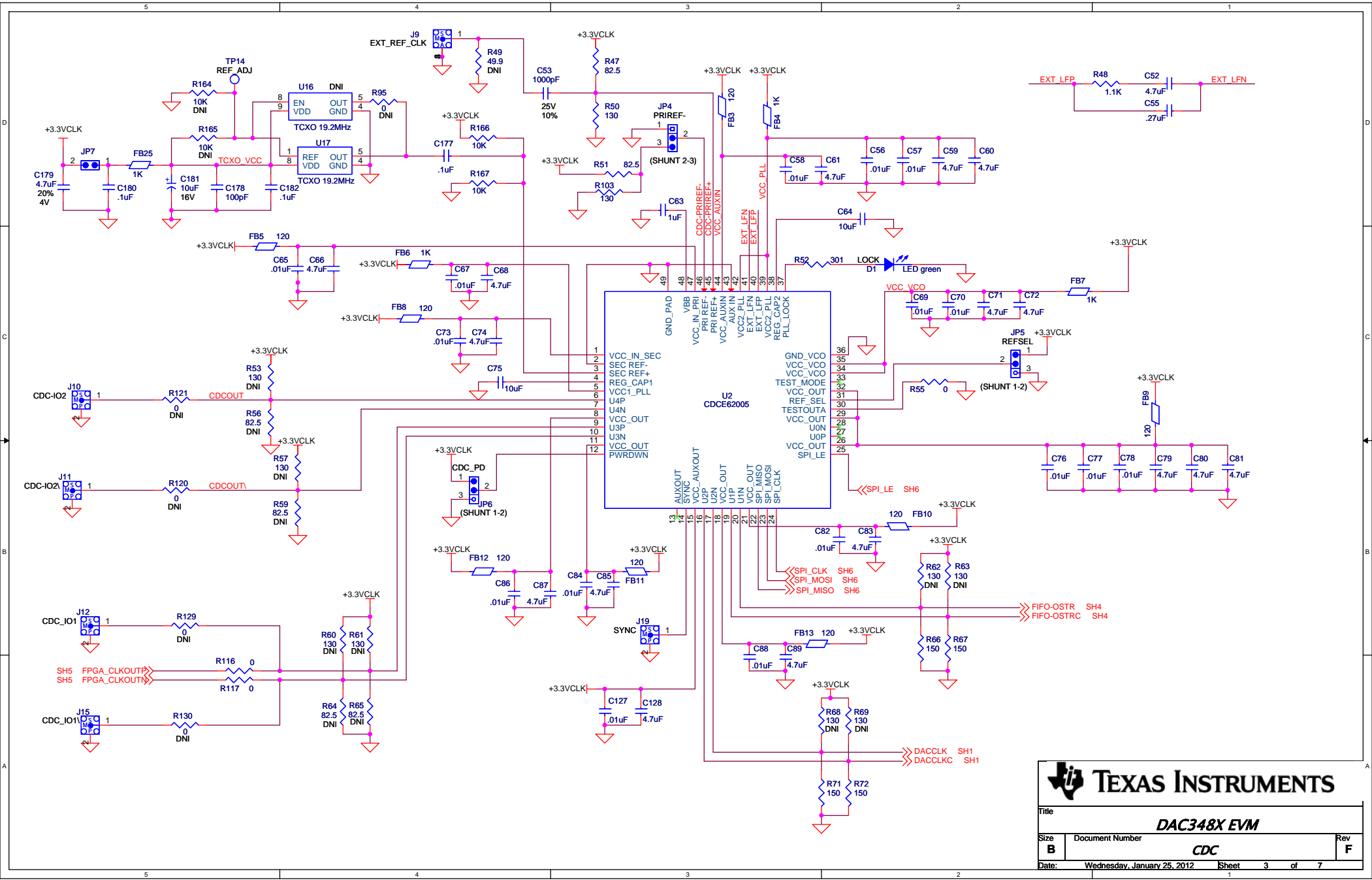


TEXAS INSTRUMENTS

Title: **DAC348X EVM**

Size **B** Document Number **DAC** Rev **F**

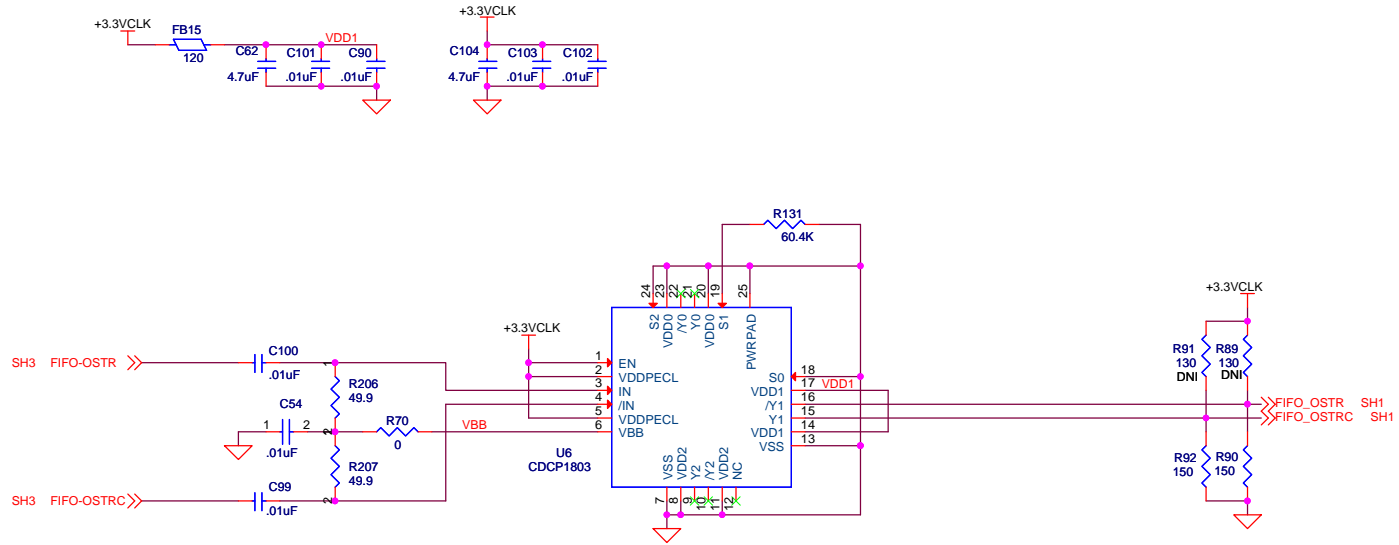
Date: Wednesday, January 25, 2012 Sheet 2 of 7



TEXAS INSTRUMENTS

Title: **DAC348X EVM**

| | | |
|--|-----------------------------|---------------|
| Size: B | Document Number: CDC | Rev: F |
| Date: Wednesday, January 25, 2012 | Sheet: 3 | of 7 |

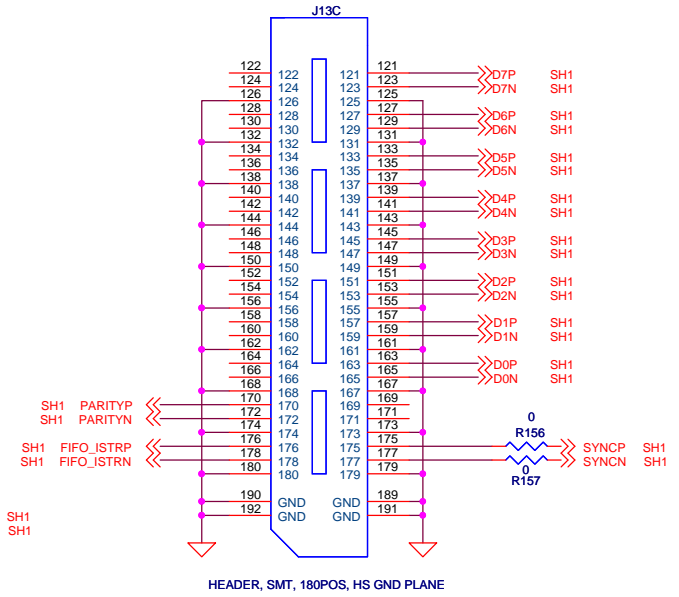
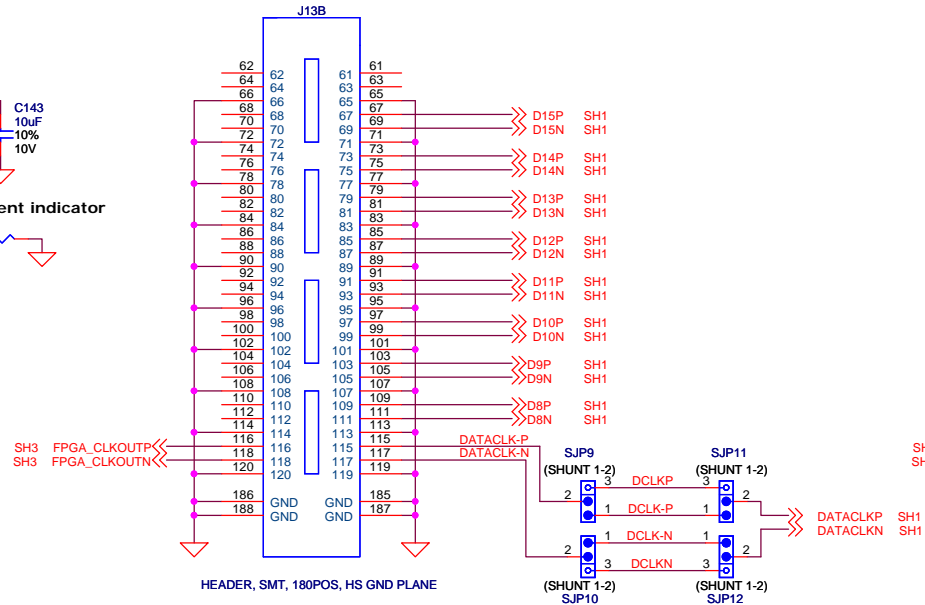
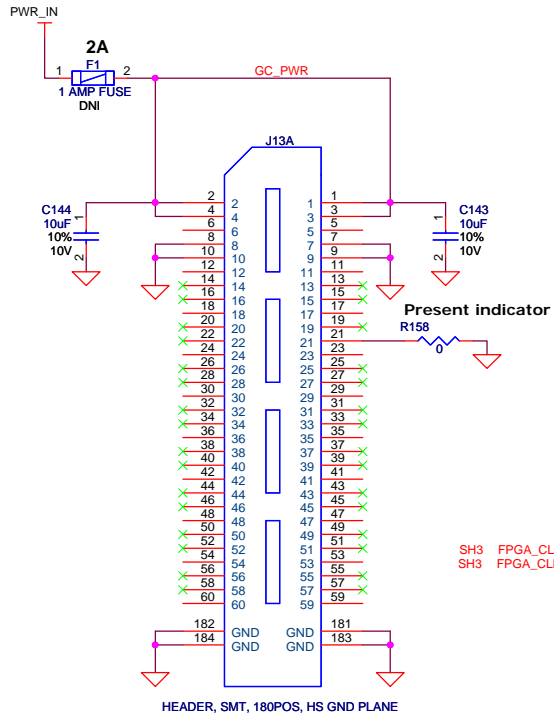


TEXAS INSTRUMENTS

Title: **DAC348X EVM**

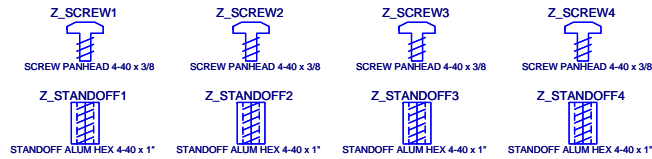
| | | |
|---------------|----------------------------|--------------|
| Size B | Document Number CDC | Rev F |
|---------------|----------------------------|--------------|

Date: Wednesday, January 25, 2012 Sheet 4 of 7

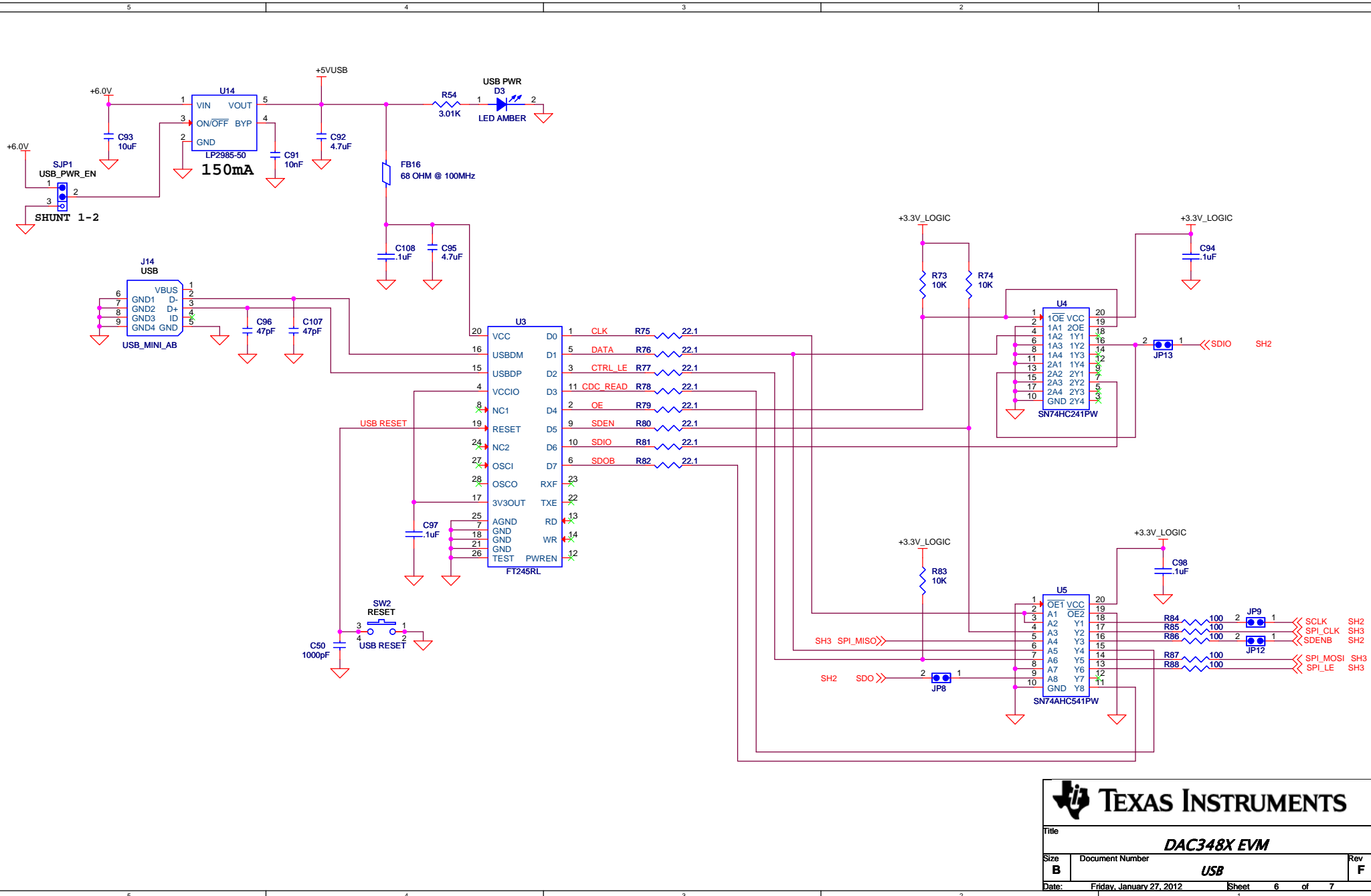


***DCLK-P/N are topside traces

DCLKP/N traces on the bottom side of board are 2" longer than DCLK-P/N traces on top side.



| | | |
|--------------------|-----------------------------|--------------|
| Title | | |
| DAC348X EVM | | |
| Size | Document Number | Rev |
| B | INTERFACE | F |
| Date: | Wednesday, January 25, 2012 | Sheet 5 of 7 |

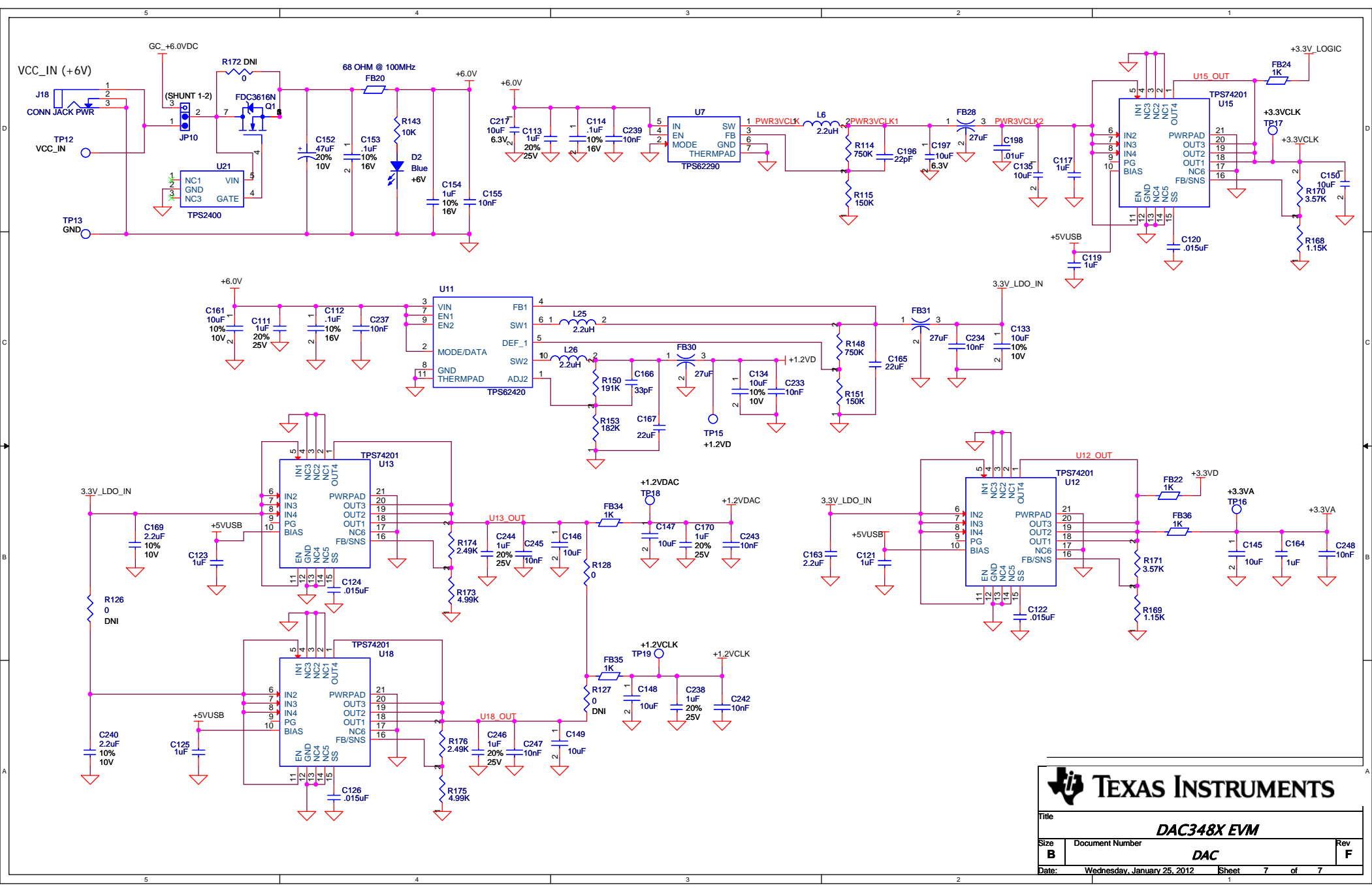



TEXAS INSTRUMENTS

Title: **DAC348X EVM**

Size: **B** | Document Number: **USB** | Rev: **F**

Date: Friday, January 27, 2012 | Sheet: 6 of 7




TEXAS INSTRUMENTS

| | | | |
|----------|-----------------------------|--------------------|----------|
| Title | | DAC348X EVM | |
| Size | Document Number | DAC | |
| B | | Rev | F |
| Date: | Wednesday, January 25, 2012 | Sheet | 7 of 7 |