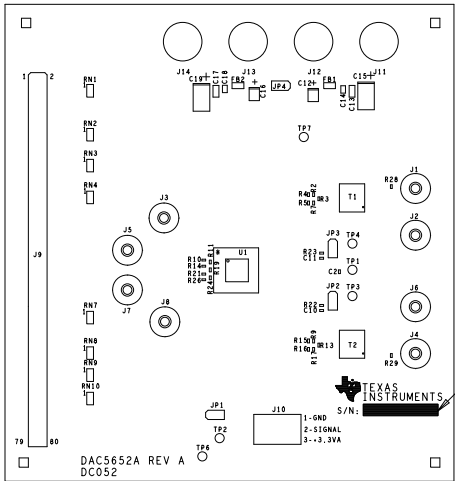


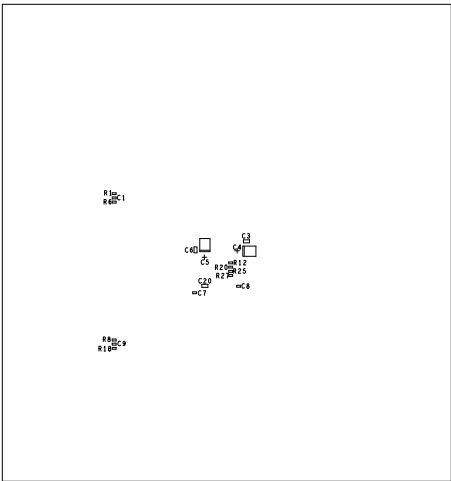
THIS DRAWING IS INTENDED TO HELP IN THE ASSEMBLY OF THE DESIGN.

- 1. REFER TO ODB++ FILE FOR SPECIFIC COMPONENT LOCATION INFORMATION.
- 2. USE WATER SOLUBLE FLUX DURING BOARD ASSEMBLY. ASSEMBLY MUST BE RoHS COMPLIANT AND LEAD FREE.
- 3. MARK BOARD'S SILKSCREEN WITH THE SERIAL NUMBER.
- 4. IPC-A-610 / ACCEPTABILITY OF ELECTRONIC ASSEMBLIES, CLASS2, CURRENT REVISION.
- 5. REMOVE THE METAL TAB ON THE BANANA JACKS BEFORE MOUNTING THEM ON THE BOARD. USE LOCTITE THREADLOCKER BLUE 242 (OR EQUIVALENT) WHEN INSTALLING THE BANANA JACKS.

REVISIONS				
ZONE	LTR	DESCRIPTION		DATE



SEE NOTE 3



UNLESS OTHERWISE SPECIFIED DIMENSIONS ARE IN INCHES TOLERANCES ARE: FRACTIONS DECIMALS ANGLES +/- .XX +/- .01 +/- .XXX +/- .005 +/-	CONTRACT NO.		TEXAS INSTRUMENTS INC.			
	APPROVALS		DATE		ASSEMBLY DRAWING, DAC5652A EVM	
	DRAWN JV SMITH		01-18-18			
	ENG N GILL		01-18-18			
MATERIAL						
FINISH			SIZE D	CODE IDENT NO.	DRAWING NO. DC052	REV. A
DO NOT SCALE DRAWING			SCALE			