

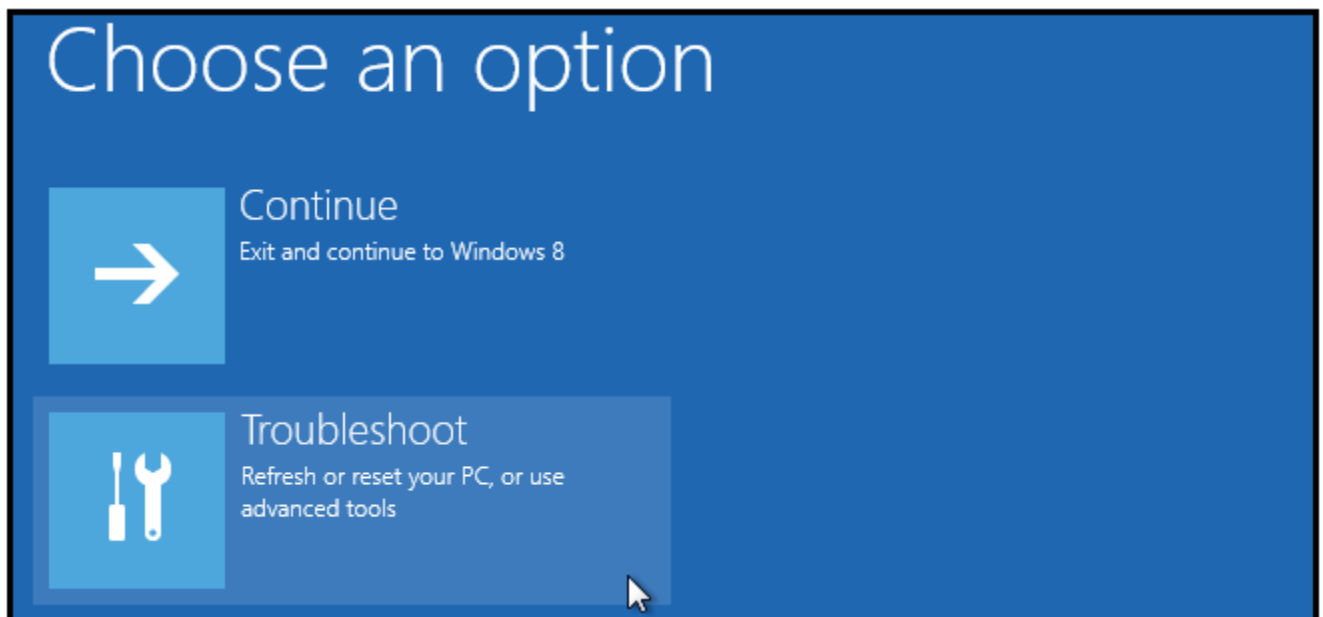
Part 1. How to Disable Driver Signature Enforcement

To disable driver signature enforcement, you can the following method on Windows 10, Windows 8.1, Windows 8, Windows 7, Windows XP and Windows Vista.

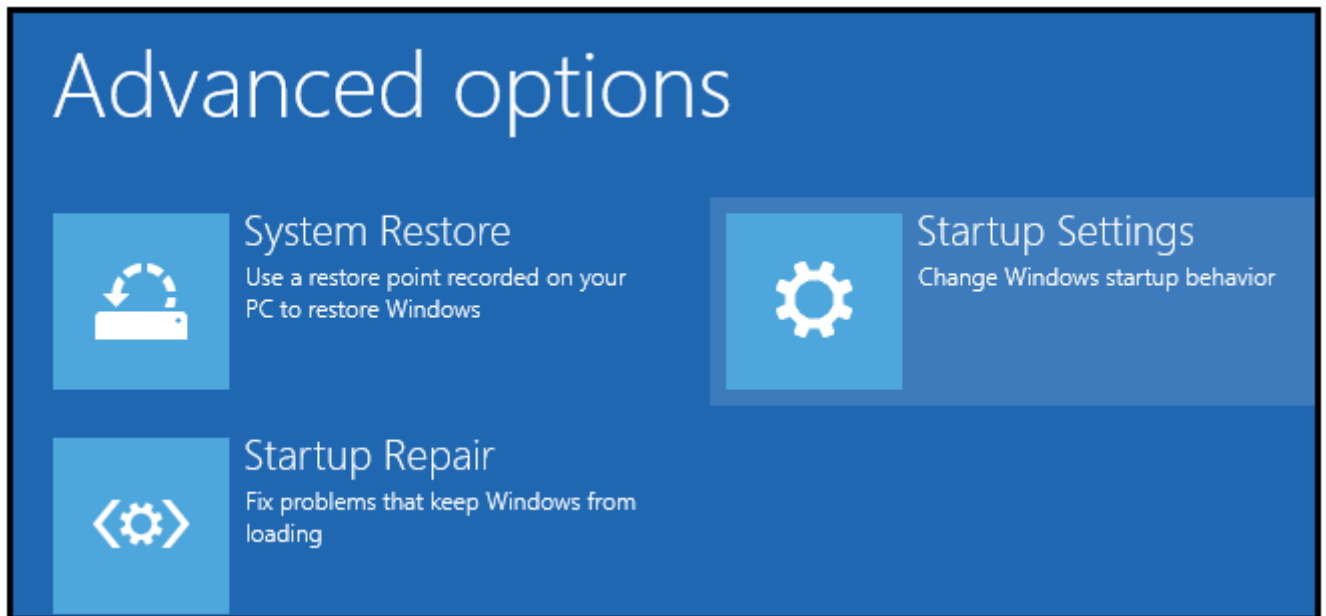
Disable Driver Signature Verification through Troubleshoot

Step 1. Enter Troubleshoot.

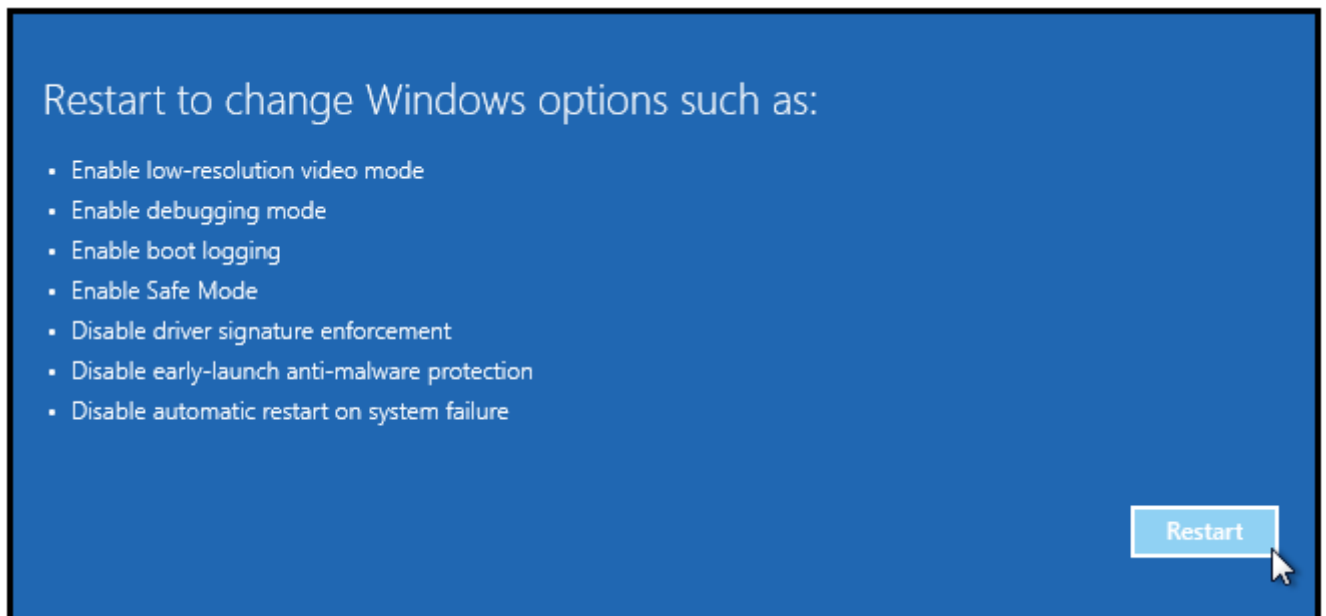
There are many ways to get into Troubleshoot. In Windows 10/8.1/8, you can click “Restart” from the power options menu or the Start menu and hold down the “Shift” key at the same time. Once the computer has rebooted, you will be able to choose the Troubleshoot option. Or you can try Windows key + R to bring up the Run box, try shutdown/r/o and hit Enter, click “Close” to sign off and then you can choose the Troubleshoot option when the computer has rebooted.



Step 2. Select “Advanced options” and “Startup Settings”.



Step 3. You need to restart you computer one last time to modify boot time configuration settings.



Step 4. You will be given a list of startup settings, including “Disable driver signature enforcement”. To choose the setting, you need to press F7 key.

Startup Settings

Press a number to choose from the options below:

Use number keys or functions keys F1-F9.

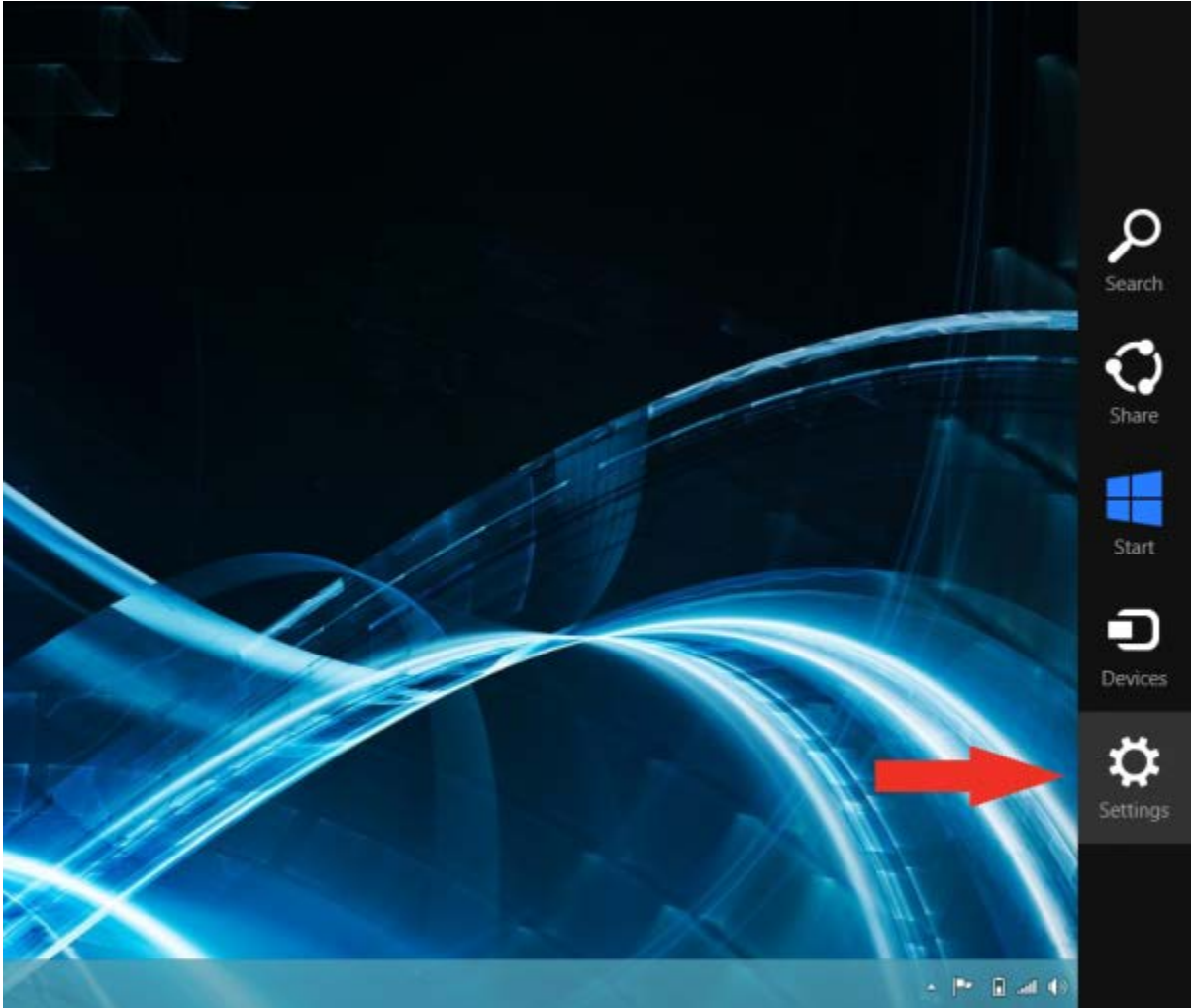
- 1) Enable debugging
- 2) Enable boot logging
- 3) Enable low-resolution video
- 4) Enable Safe Mode
- 5) Enable Safe Mode with Networking
- 6) Enable Safe Mode with Command Prompt
- 7) Disable driver signature enforcement
- 8) Disable early launch anti-malware protection
- 9) Disable automatic restart after failure

In Windows 7, XP and Vista, you can continuously press during boot-up to get to Advanced Boot options (on some other systems, you need to first press to go into Boot Menu and then press to reach Advanced Boot options). When the menu pops up, use the Down arrow key to scroll to “Disable driver signature enforcement” and press “Enter”. Continue the boot process.

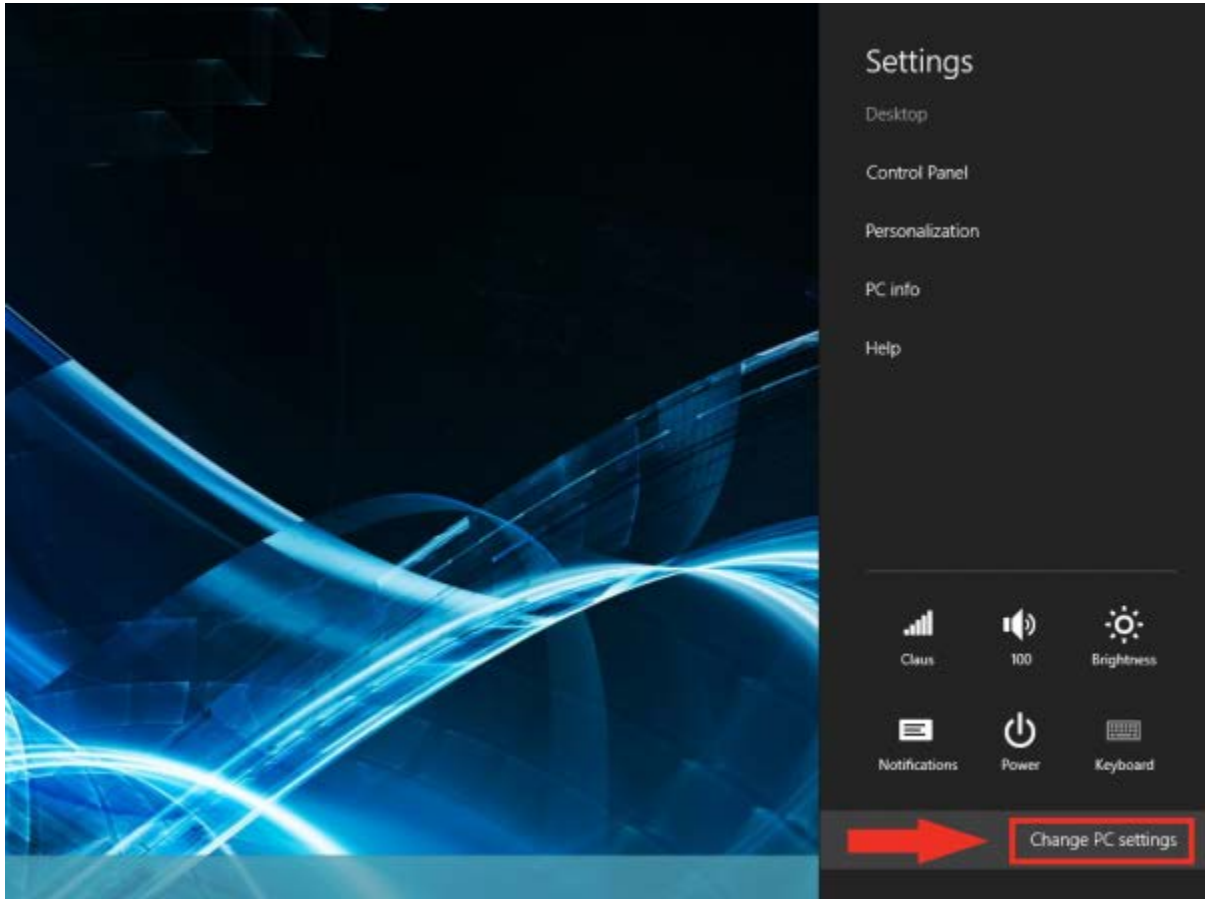
Your PC will reboot and you are able to install any drivers including the unsigned drivers without error messages.

What to do:

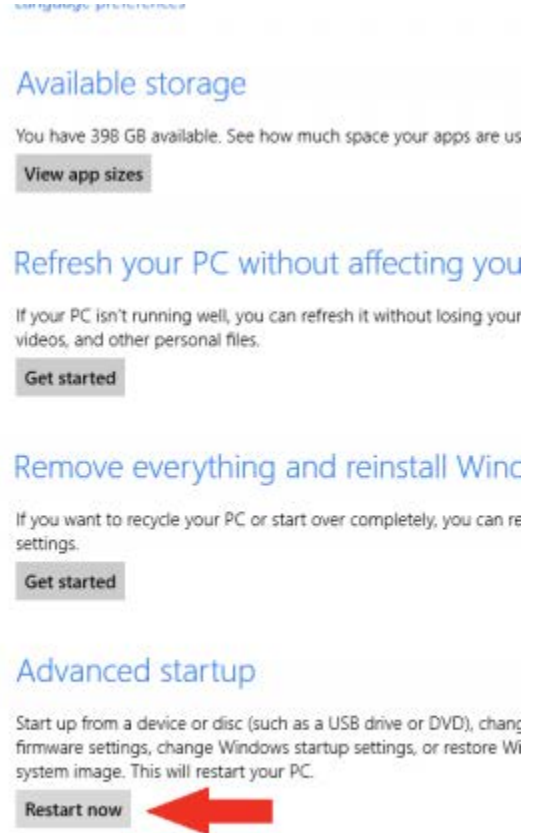
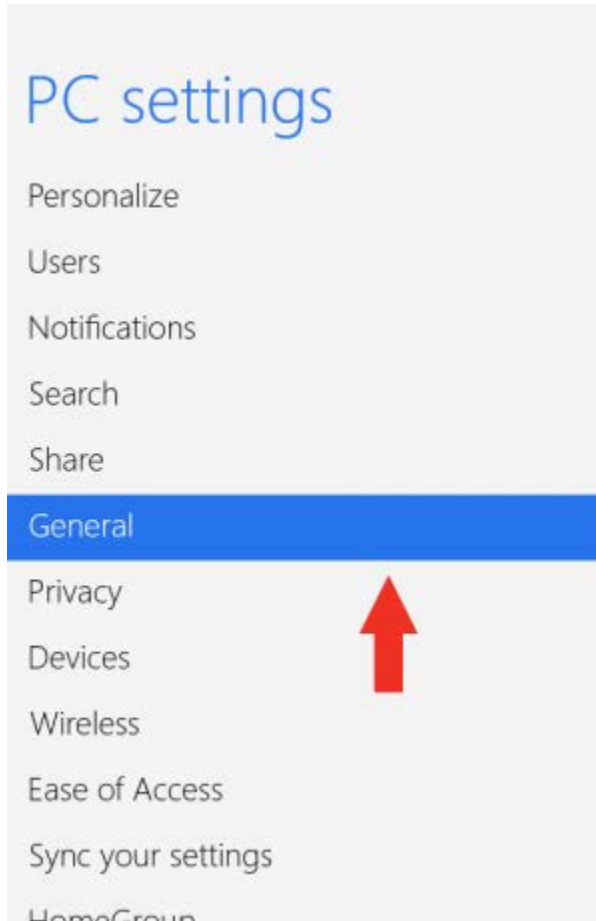
1. Hold down the Windows key on your keyboard and press the letter C to open the Charm menu, then click the gear icon (**Settings**).



2. Click **More PC Settings**.

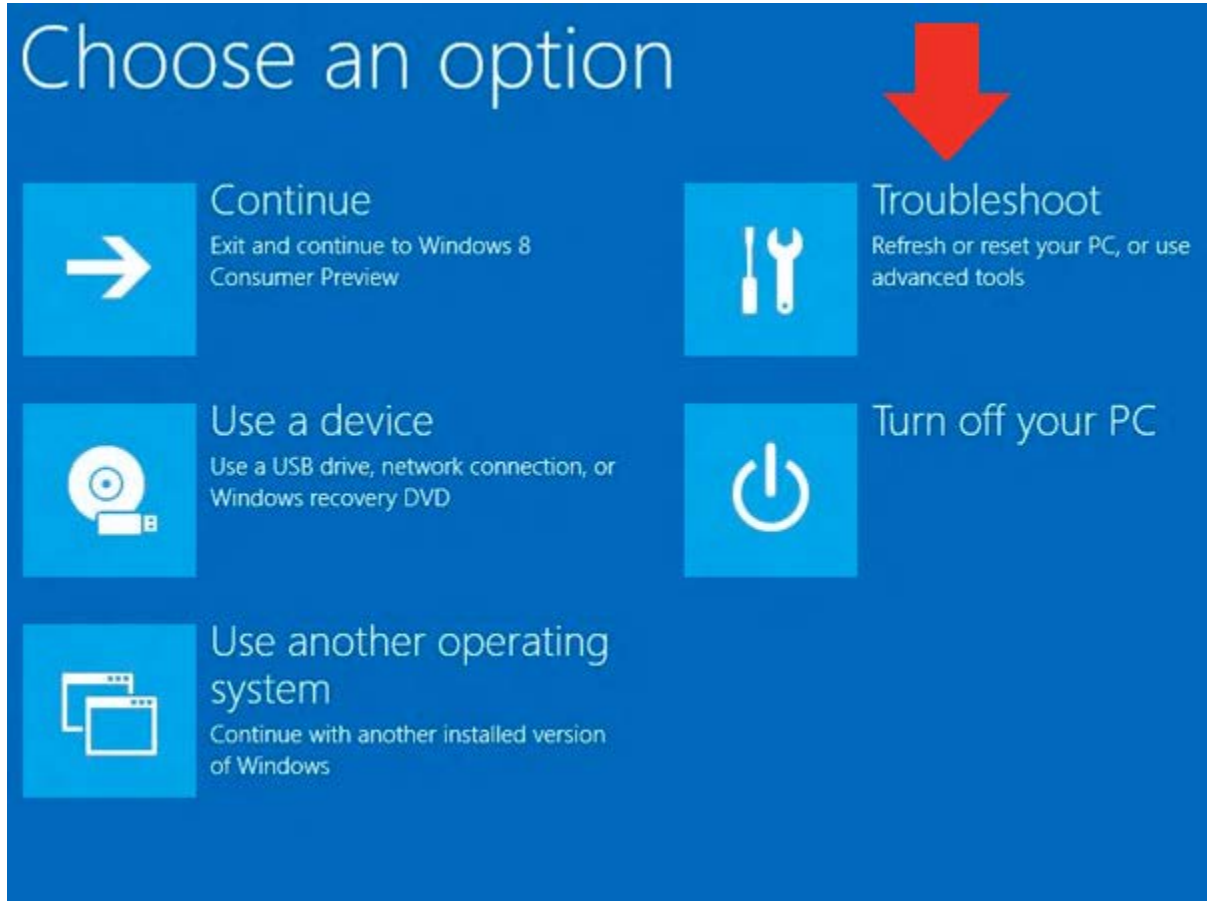


3. Click **General**.
4. Under **Advanced startup**, click **Restart Now**.

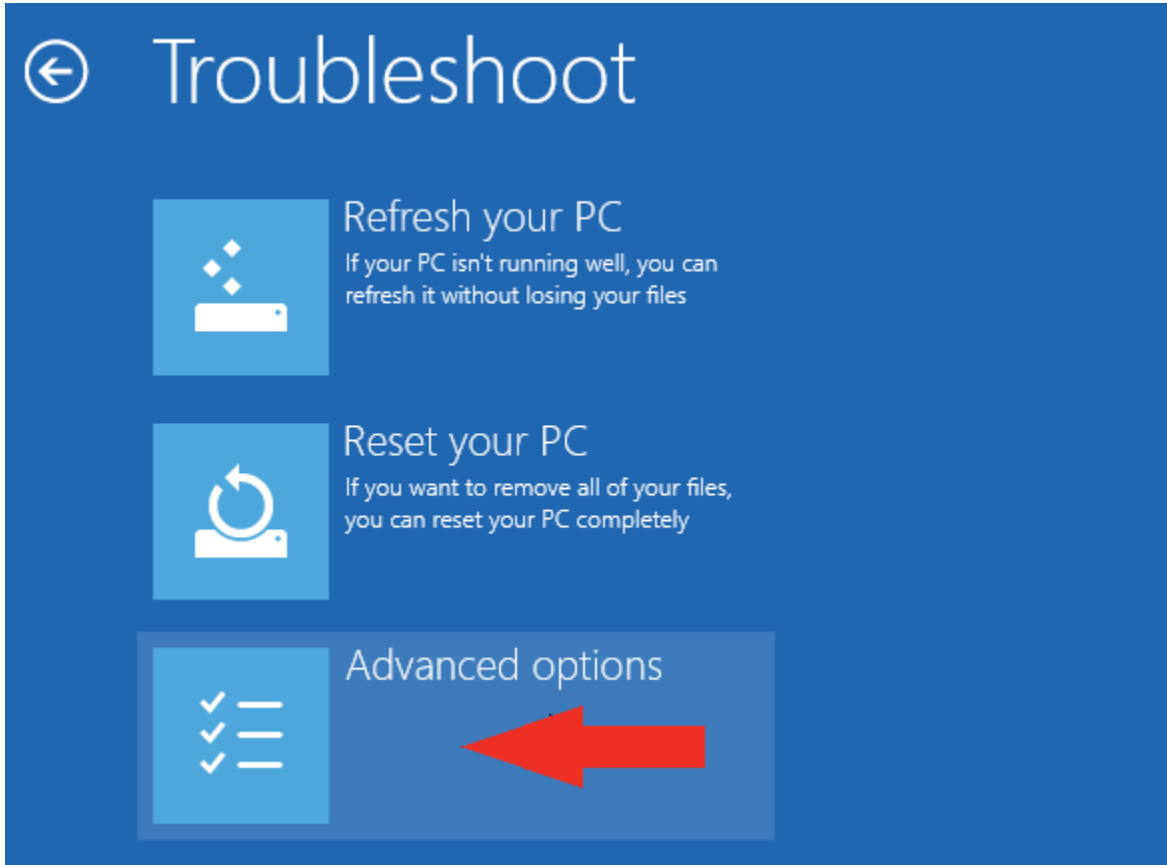


NOTE: In Windows 8.1, the 'Restart Now' button has moved to 'PC Setting -> Update & Recovery -> Recovery.'

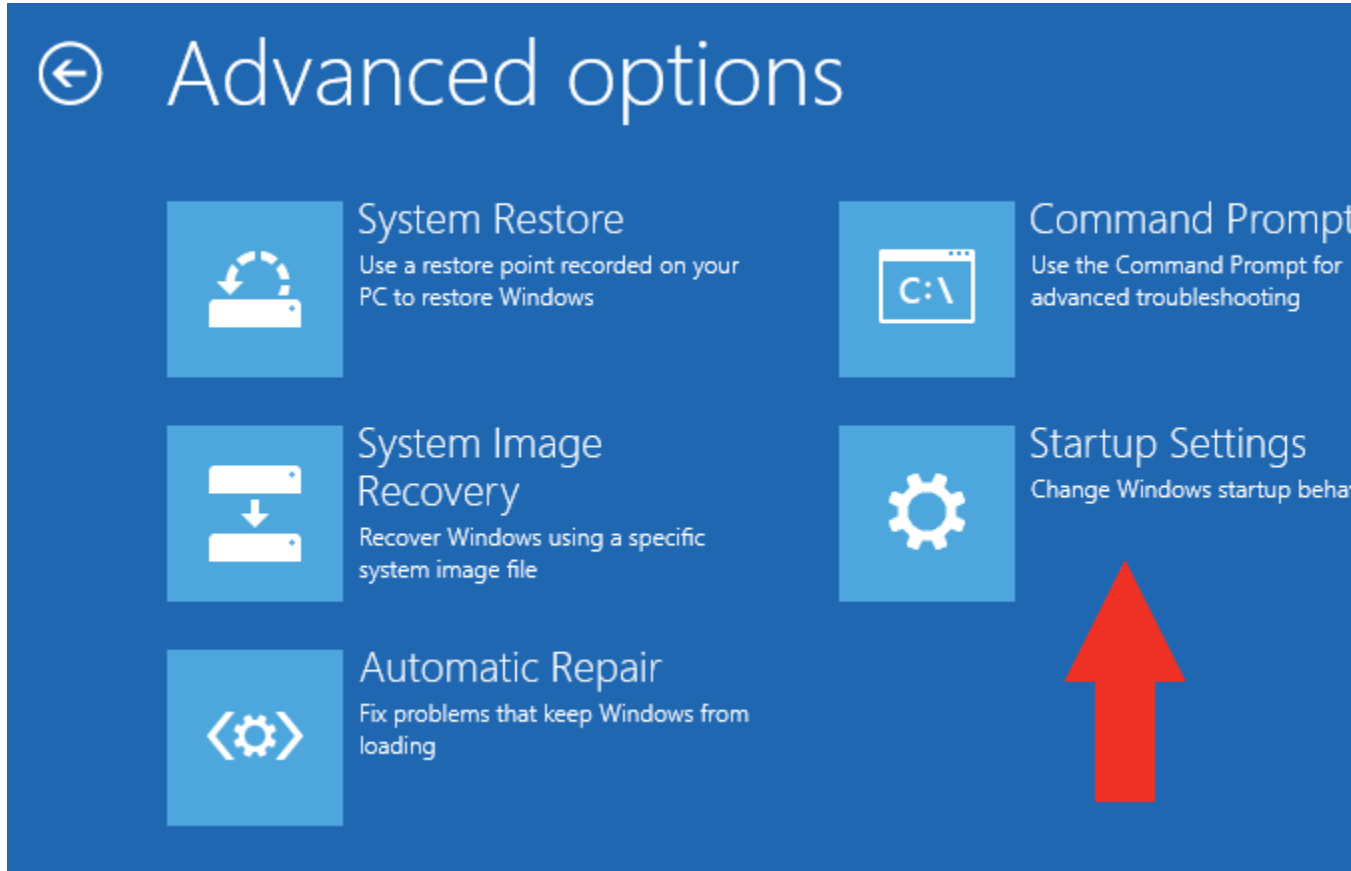
5. After restarting, click **Troubleshoot**.



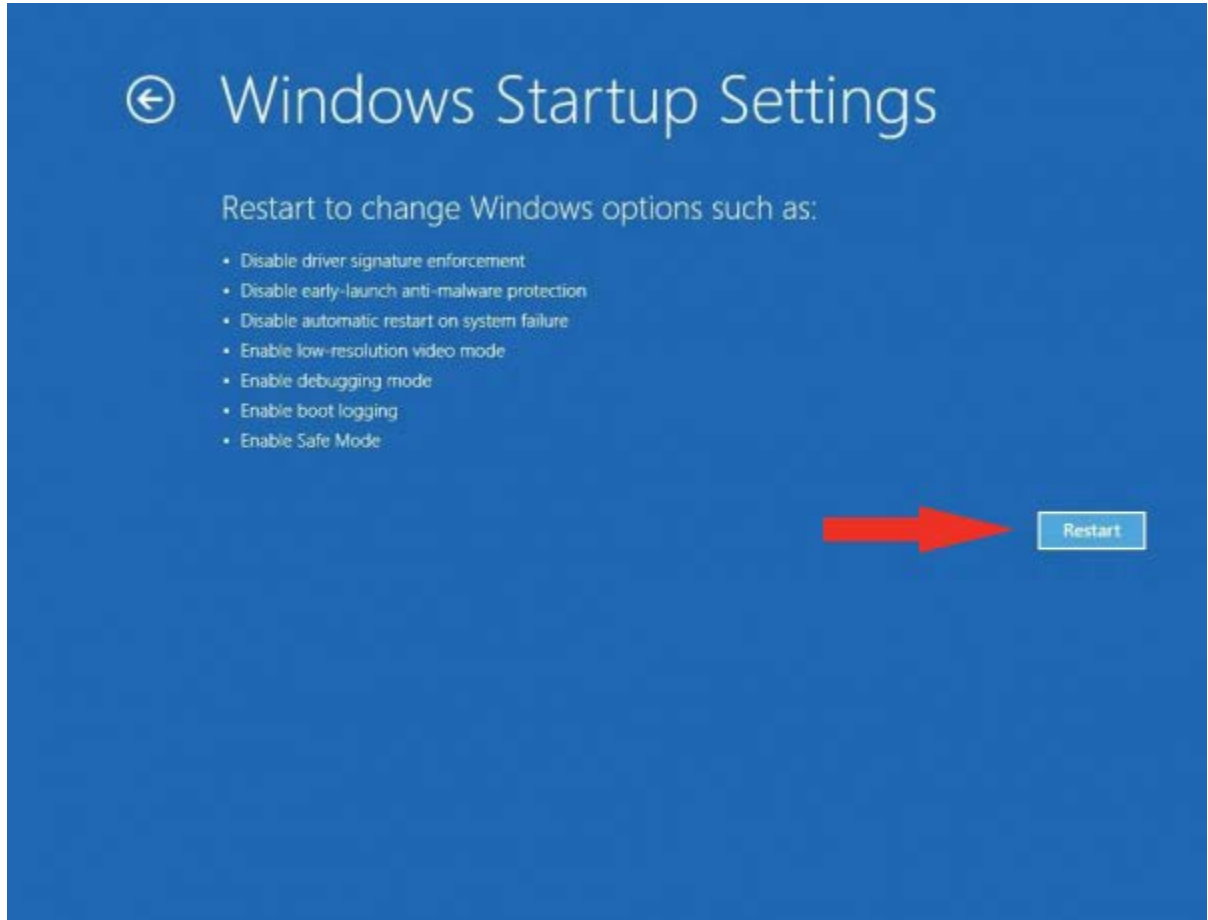
6. Click **Advanced Options**.



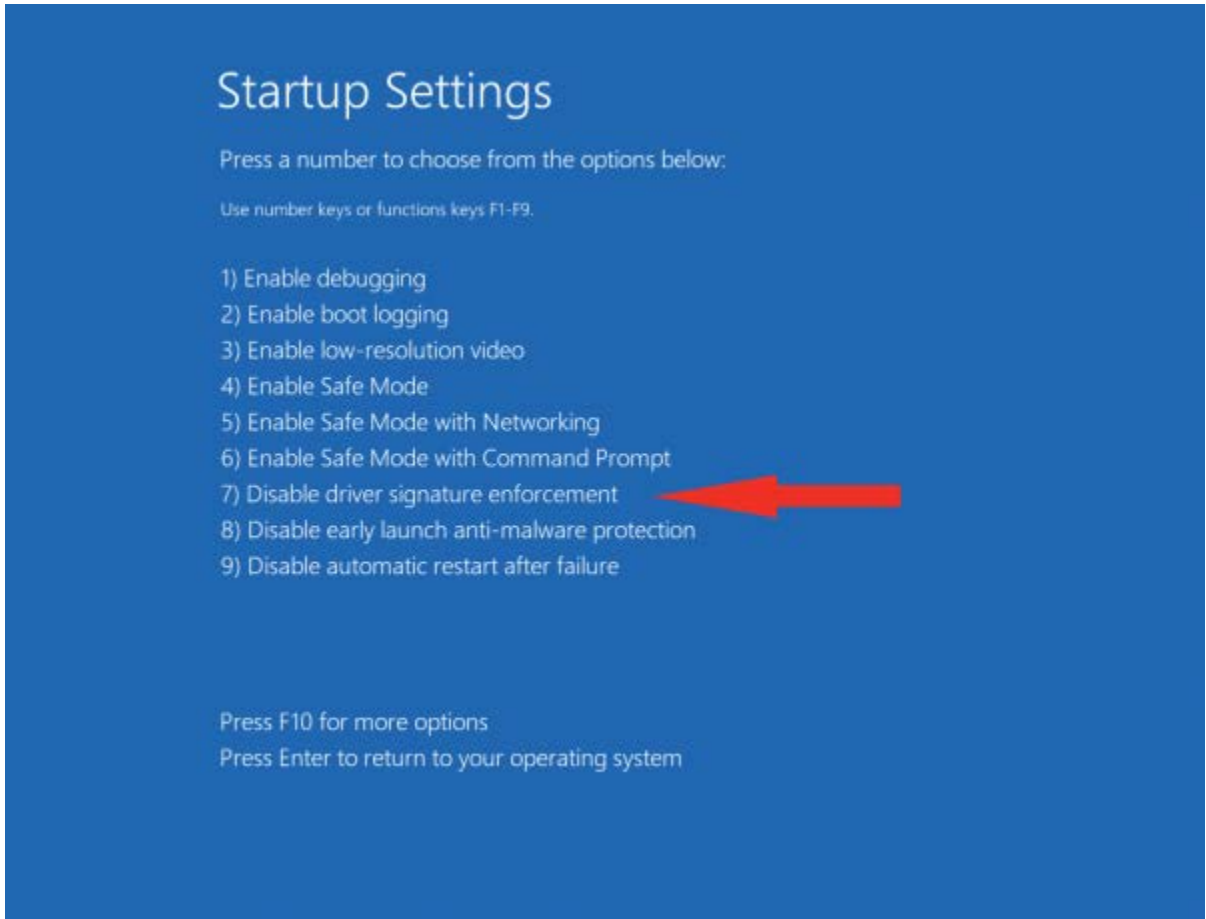
7. Click **Windows Startup Settings**.



8. Click **Restart**.

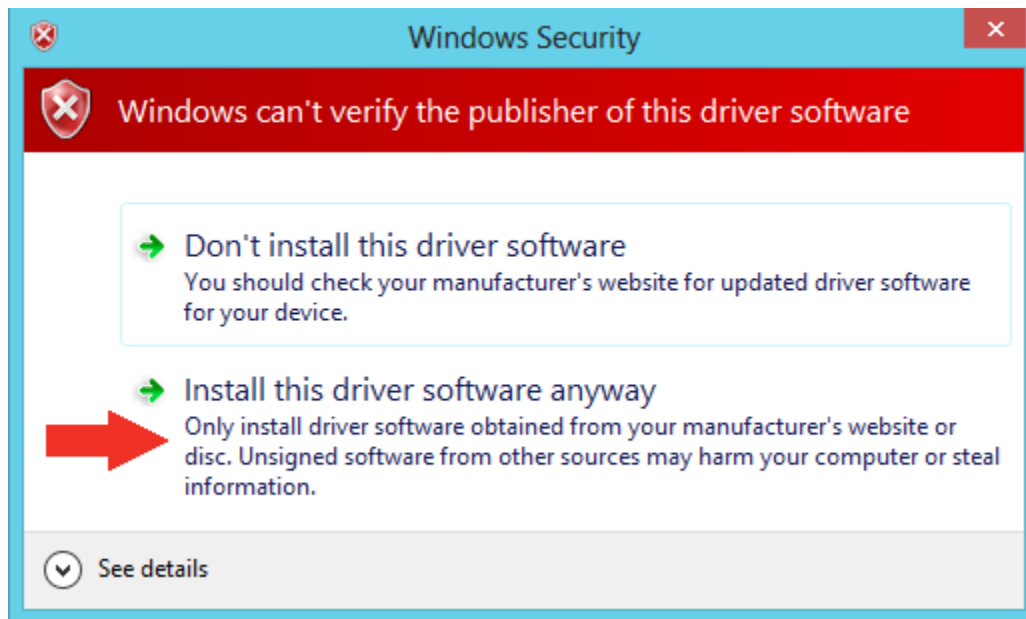


9. After restarting your computer a second time, choose **Disable driver signature enforcement** from the list by typing the number 7 on your keyboard.



Your computer will restart automatically.

10. After restarting, you will be able to install the drivers normally; however, Windows will display a warning message. When the warning appears, click **Install this driver software anyway**.



Note: The next time you restart your computer, driver signature enforcement will be in effect again. You will have to repeat this process for any new boards. If you have multiple boards to use with the same computer, we recommend installing the drivers for each one before you shut down or restart your computer.