

FTDI Driver Installation Procedure

Follow the instructions given below to install CDM driver,

1. If you are facing any issues with the FTDI driver or if the GUI is not able to find the FTDI dll, then uninstall the driver before reinstalling. Please refer **FTDI Driver Uninstallation Procedure** section of this document for further details.
2. Make sure that the FTDI devices are unplugged from the PC before starting the installation.
3. Download the latest FTDI CDM driver from the **FTDI web site** and unzip it into a location on your PC. Please use the following link to download,
 - <http://www.ftdichip.com/Drivers/D2XX.htm>

Currently Supported D2XX Drivers:

Operating System	Release Date	Processor Architecture							Comments
		x86 (32-bit)	x64 (64-bit)	PPC	ARM	MIPSII	MIPSIV	SH4	
Windows	2014-02-21	2.10.00	2.10.00	-	-	-	-	-	2.10.00 WHQL Certified Available as setup executable Release Notes
Windows RT	2014-02-21	BETA	-	-	BETA	-	-	-	Please click here to register interest and receive a BETA copy of this driver.
Linux	2012-06-29	1.1.12	1.1.12	-	1.1.12 Suitable for Raspberry Pi	-	-	-	ReadMe
Mac OS X	2012-10-30	1.2.2	1.2.2	1.2.2	-	-	-	-	Requires Mac OS X 10.4 (Tiger) or later ReadMe
Windows CE 4.2-5.2**	2014-22-04	1.0.1.10	-	-	1.0.1.10	1.0.1.6	1.0.1.6	1.0.1.6	
Windows CE 6.0	2014-22-04	1.0.1.10	-	-	1.0.1.10	1.0.1.6	1.0.1.6	1.0.1.6	
Android	2011-09-30				Beta Driver				Rooting of Android device required Refer to technical note TN_134
Android (Java D2XX)	2013-02-13				Java Driver				Rooting of Android device is not required. Refer to technical note TN_147 TN_147 sample download

*includes the following versions of the Windows operating system: Windows XP, Windows Server 2003, Windows Vista, Windows Server 2008, Windows 7, Windows Server 2008 R2 and Windows 8/8.1.

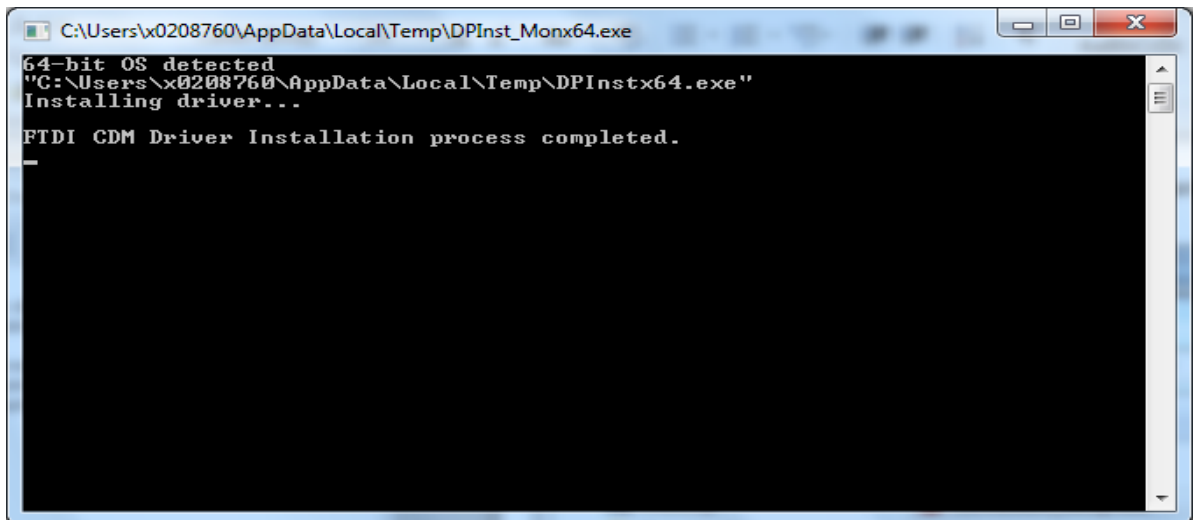
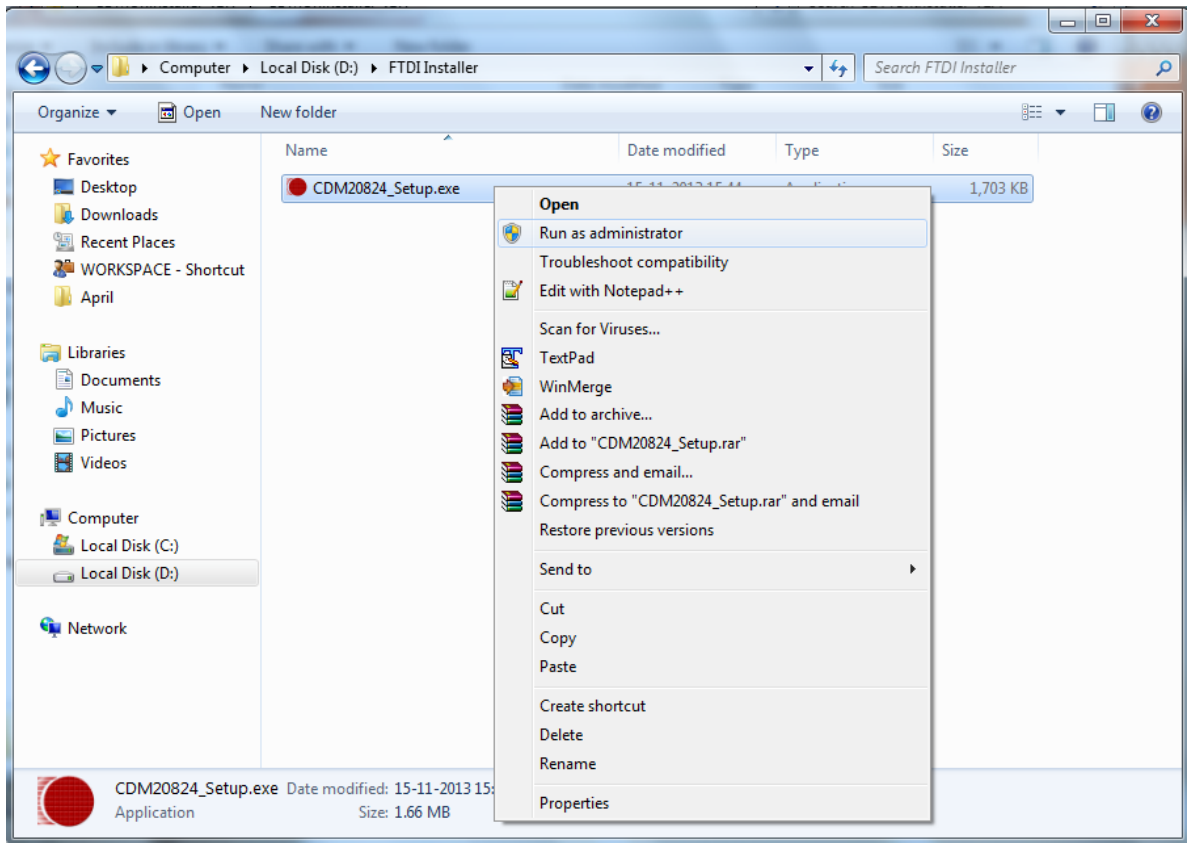
NOTE: Microsoft have ended support for certifying XP and VISTA through their WHCK test program. As such current builds will still work on XP and VISTA but are not Microsoft certified.

*Also, as Windows 8 RT is a closed system not allowing for 3rd party driver installation our Windows 8 driver will not support this variant of the OS. You must use the [Windows RT](#) build for this platform.

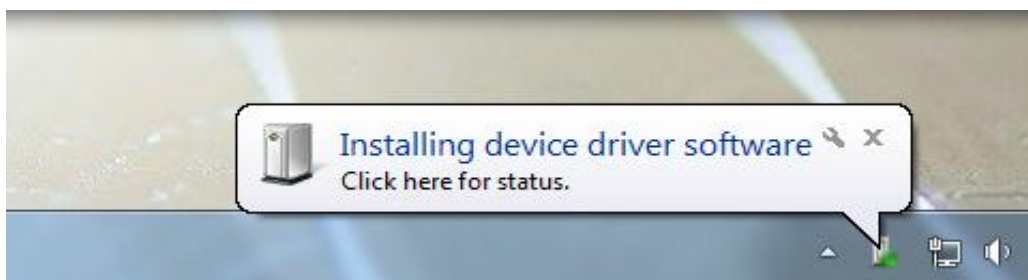
No Longer Supported:

Operating System	Release Date	Processor Architecture							Previous Certified Release
		x86 (32-bit)	x64 (64-bit)	PPC	ARM	MIPSII	MIPSIV	SH4	
Windows 8.1	2013-10-21	2.08.30	2.08.30	-	-	-	-	-	2.08.30 WHQL Certified for Win 8.1 Available as setup executable Release notes
									2.08.30 WHQL Certified

4. Run the FTDI driver exe with the administrator privilege and click through the popup menus that show until you are finished (like shown in the below screenshots).



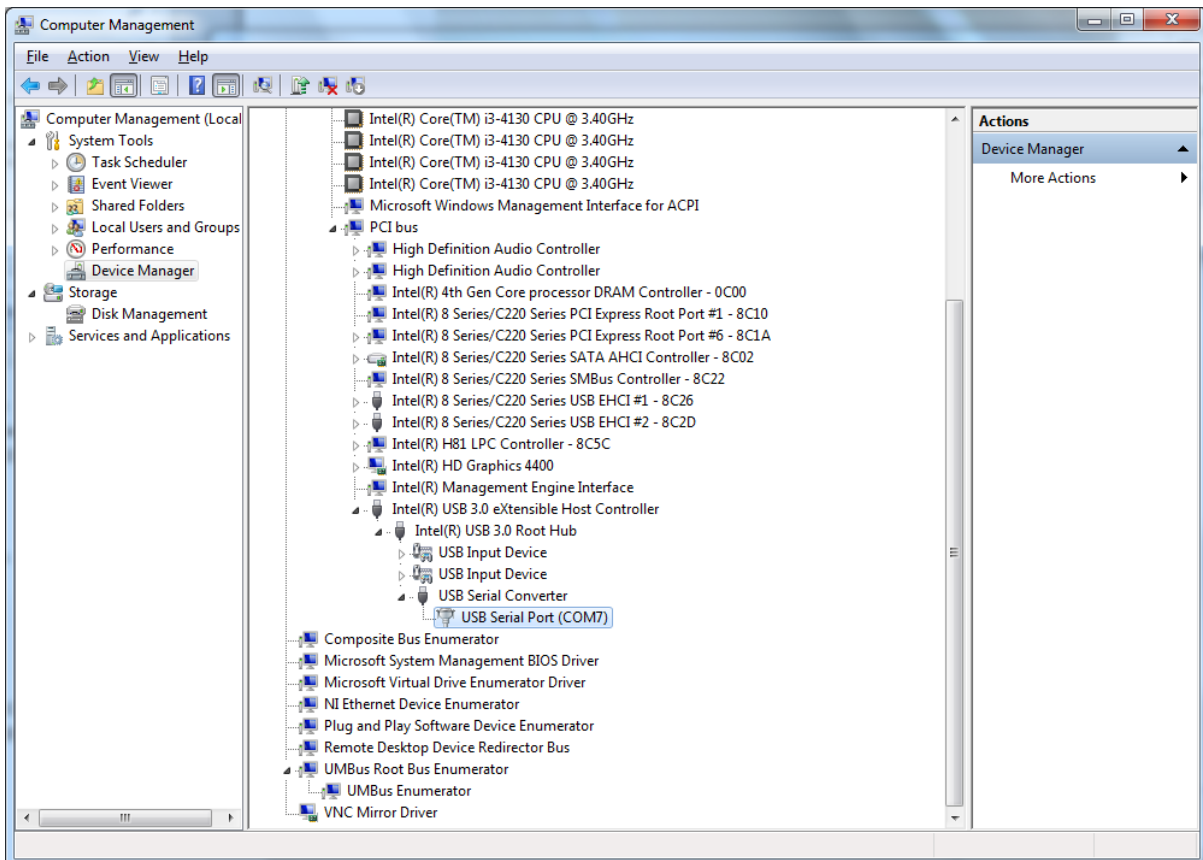
5. After installing the FTDI CDM driver, connect an FTDI device to the PC. Now it shows a popup above the Taskbar indicating the driver is getting installed.



6. After successful installation a new popup will appear like shown below that says 'Your device is ready to use'.



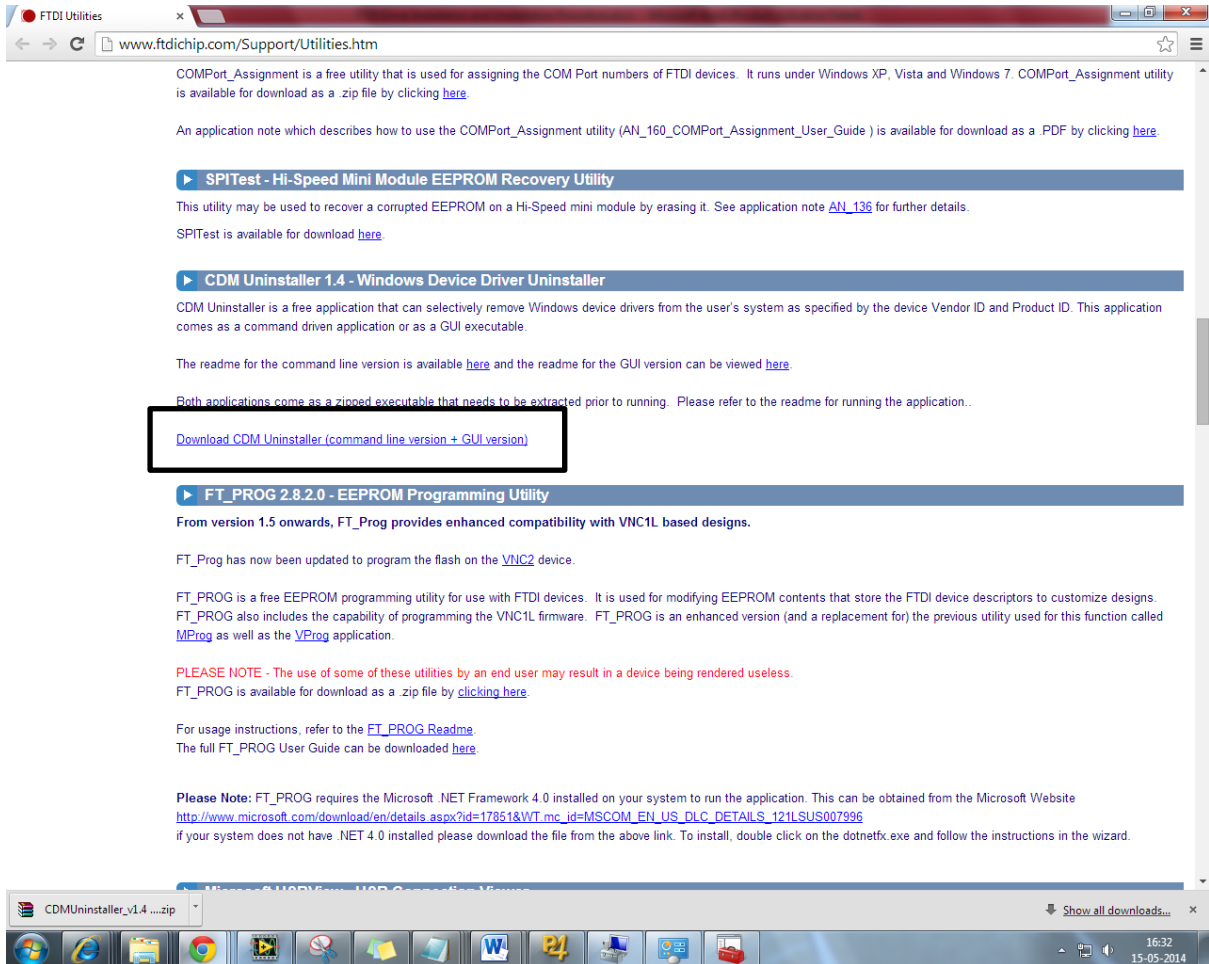
7. Now the FTDI CDM driver installation is complete and the ftd2xx.dll should be present under following folders based on the OS bit system,
 - 32 bit OS
 - C:\Windows\System32
 - 64 bit OS
 - 32 bit dll under 'C:\Windows\SysWOW64'
 - 64 bit dll under 'C:\Windows\System32'
8. Open the Device Manager (located in "Control Panel\System\Device Manger") and select "View > Devices by Connection", the device appears as a "USB Serial Converter" with an additional COM port with the label "USB Serial Port"



FTDI Driver Uninstallation Procedure

1. To begin with, download the CDMUninstallerGUI.zip file from the FTDI website. Extract the CDMUninstallerGUI.exe file from the .zip file and place it in an appropriate location on your system. Please use the following link to download

- <http://www.ftdichip.com/Support/Utilities.htm>



FTDI Utilities

www.ftdichip.com/Support/Utilities.htm

COMPort_Assignment is a free utility that is used for assigning the COM Port numbers of FTDI devices. It runs under Windows XP, Vista and Windows 7. COMPort_Assignment utility is available for download as a .zip file by clicking [here](#).

An application note which describes how to use the COMPort_Assignment utility (AN_160_COMPort_Assignment_User_Guide) is available for download as a .PDF by clicking [here](#).

▶ SPITest - Hi-Speed Mini Module EEPROM Recovery Utility

This utility may be used to recover a corrupted EEPROM on a Hi-Speed mini module by erasing it. See application note [AN_136](#) for further details.

SPITest is available for download [here](#).

▶ CDM Uninstaller 1.4 - Windows Device Driver Uninstaller

CDM Uninstaller is a free application that can selectively remove Windows device drivers from the user's system as specified by the device Vendor ID and Product ID. This application comes as a command driven application or as a GUI executable.

The readme for the command line version is available [here](#) and the readme for the GUI version can be viewed [here](#).

Both applications come as a zipped executable that needs to be extracted prior to running. Please refer to the readme for running the application..

[Download CDM Uninstaller \(command line version + GUI version\)](#)

▶ FT_PROG 2.8.2.0 - EEPROM Programming Utility

From version 1.5 onwards, FT_Prog provides enhanced compatibility with VNC1L based designs.

FT_Prog has now been updated to program the flash on the [VNC2](#) device.

FT_PROG is a free EEPROM programming utility for use with FTDI devices. It is used for modifying EEPROM contents that store the FTDI device descriptors to customize designs. FT_PROG also includes the capability of programming the VNC1L firmware. FT_PROG is an enhanced version (and a replacement for) the previous utility used for this function called [MProg](#) as well as the [VProg](#) application.

PLEASE NOTE - The use of some of these utilities by an end user may result in a device being rendered useless.

FT_PROG is available for download as a .zip file by clicking [here](#).

For usage instructions, refer to the [FT_PROG Readme](#).
The full FT_PROG User Guide can be downloaded [here](#).

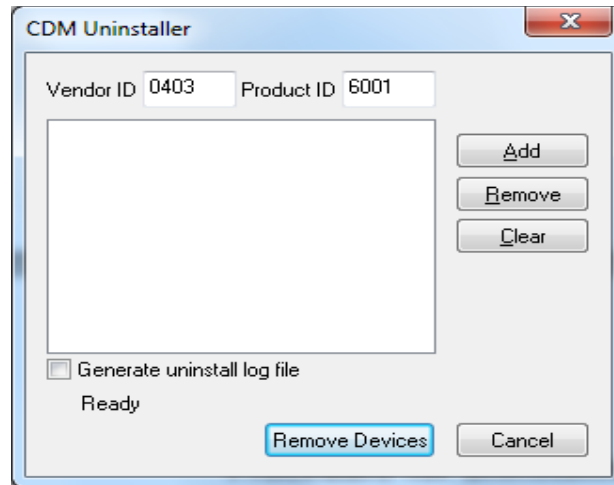
Please Note: FT_PROG requires the Microsoft .NET Framework 4.0 installed on your system to run the application. This can be obtained from the Microsoft Website http://www.microsoft.com/download/en/details.aspx?id=17851&WT.mc_id=MSCOM_EN_US_DLC_DETAILS_121LSUS007996 if your system does not have .NET 4.0 installed please download the file from the above link. To install, double click on the dotnetfx.exe and follow the instructions in the wizard.

CDMUninstaller_v1.4zip

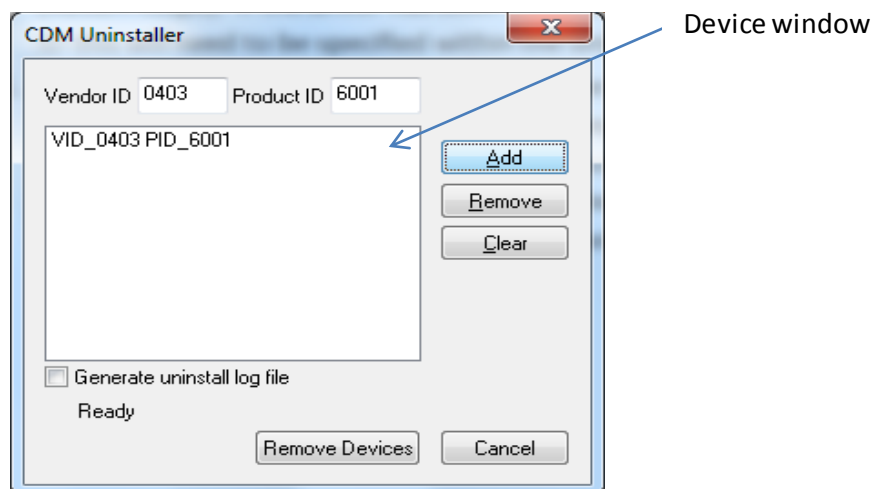
Show all downloads...

16:32
15-05-2014

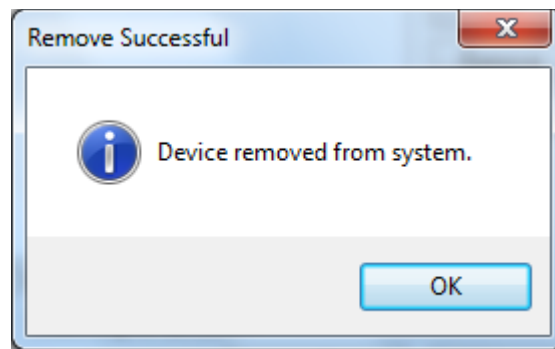
2. Run the application by simply double clicking on the CDMuninstallerGUI.exe file. The following window appears



3. The Vendor ID and Product ID text boxes allow the user to enter a 4 character hex value specifying the device that they wish to remove. All installed device drivers can be viewed from within the Windows **Device Manager**. FTDI default Vendor ID is 0x0403, the default Product ID is: 0x6001 for the single channel devices (R Chips); 0x6010 for the dual channel devices (2232C/D/H Chips) and 0x6011 for the quad channel devices (4232H Chips). If the driver has been installed with a custom Vendor ID and/or Product ID this will need to be specified within the uninstaller to remove the device.
4. To remove a device it must be added into the Device window as shown below, by clicking on the Add button; any number of devices can be specified within this window although they all must have a unique Vendor ID and Product ID combinations. To remove the device(s) click on the 'Remove Devices' button. The 'Remove' button will remove the currently selected item the device window and the 'Clear' button will remove all the devices from the device window.



9. Clicking Remove Devices will remove the Device and shows the following popup



5. If there are no devices specified within the device window the following message will appear. Make sure that at least one device has been specified within the window by using the 'Add' button.

