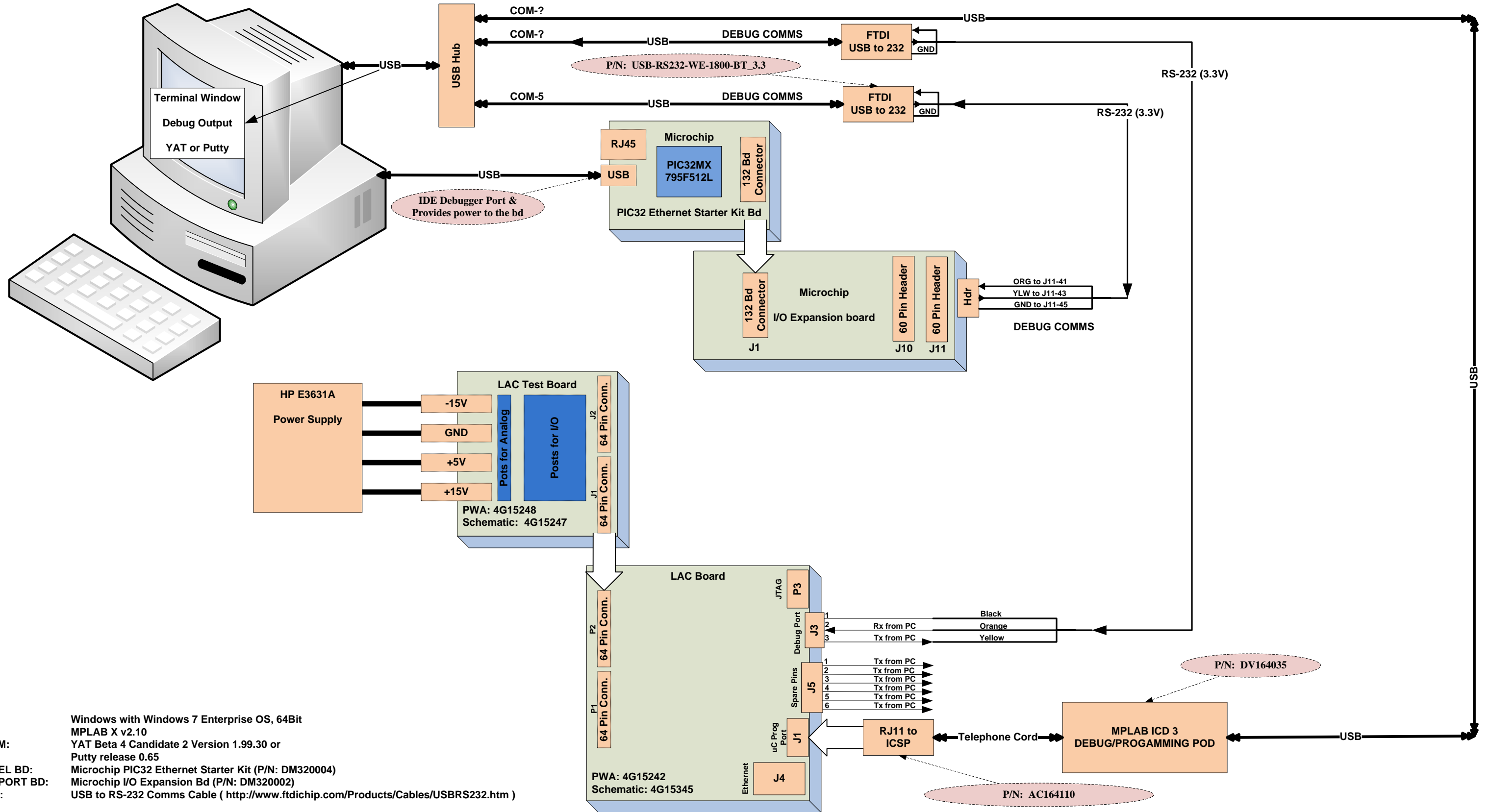


Q24 LAC TEST ENVIRONMENT

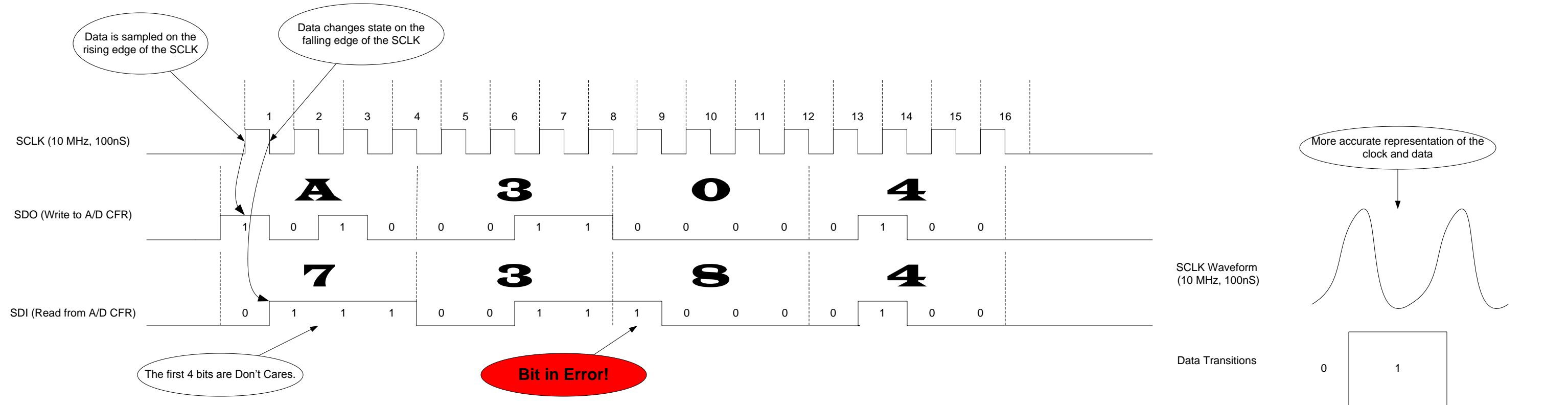


PC: Windows with Windows 7 Enterprise OS, 64Bit
IDE: MPLAB X v2.10
TERM: YAT Beta 4 Candidate 2 Version 1.99.30 or Putty release 0.65
DEVEL BD: Microchip PIC32 Ethernet Starter Kit (P/N: DM320004)
SUPPORT BD: Microchip I/O Expansion Bd (P/N: DM320002)
FTDI: USB to RS-232 Comms Cable (<http://www.ftdichip.com/Products/Cables/USBR2322.htm>)

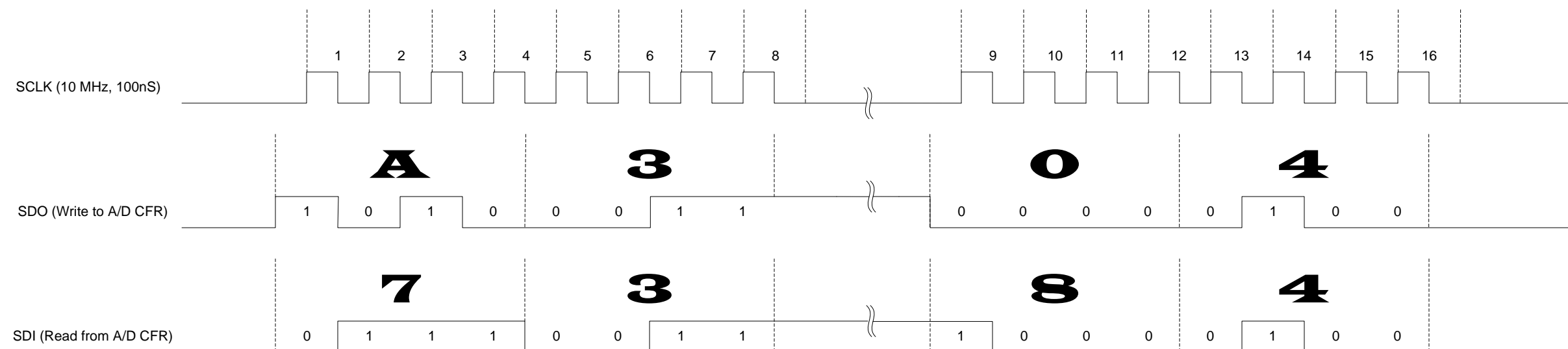
PIC32MX795 SPI Bus Timing with TI's TLC1518 A/D

Sept. 10, 2015
 [Z:\blog\Q24\SSC-LAC Card Design\LAC\Docs\My Docs\LAC BenchTesting.vsd]

SPI = 16-bit Mode, CKE = 1, CKP = 0, SMP = 0



SPI = 8-bit Mode, CKE = 1, CKP = 0, SMP = 0



Note: The CS- is under software control, so it occurs well before the first SCLK appears and long after the last SCLK.