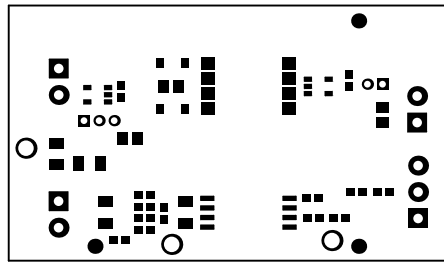
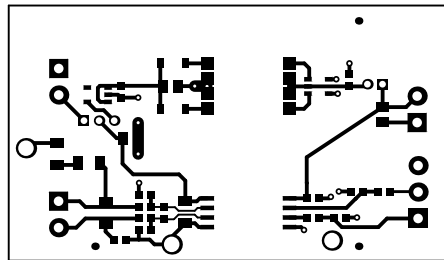


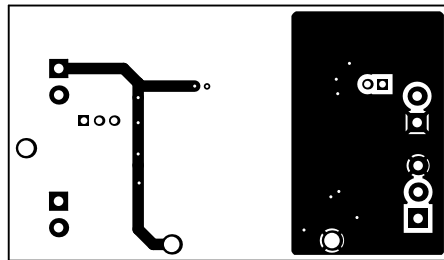
ALL ARTWORK VIEWED FROM TOP SIDE	BOARD #: PA026	REV: B	SUN REV: Not In VersionControl
LAYER NAME = Top Overlay	TID #: N/A		
PLOT NAME = Top Overlay	GENERATED : 7/19/2019 7:53:52 AM	TEXAS INSTRUMENTS	



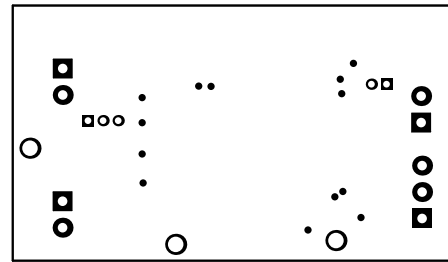
ALL ARTWORK VIEWED FROM TOP SIDE	BOARD #: PA026	REV: B	SUN REV: Not In VersionControl
LAYER NAME = Top Solder	TID #: N/A		
PLOT NAME = Top Solder Mask	GENERATED : 7/19/2019 7:53:53 AM	TEXAS INSTRUMENTS	



ALL ARTWORK VIEWED FROM TOP SIDE	BOARD #: PA026	REV: B	SUN REV: Not In VersionControl
LAYER NAME = Top Layer	TID #: N/A		
PLOT NAME = Top Layer	GENERATED : 7/19/2019 7:53:54 AM	TEXAS INSTRUMENTS	



ALL ARTWORK VIEWED FROM TOP SIDE	BOARD #: PA026	REV: B	SUN REV: Not In VersionControl
LAYER NAME = Bottom Layer	TID #: N/A		
PLOT NAME = Bottom Layer	GENERATED : 7/19/2019 7:53:55 AM	TEXAS INSTRUMENTS	

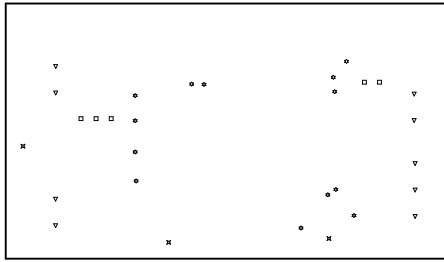


ALL ARTWORK VIEWED FROM TOP SIDE	BOARD #: PA026	REV: B	SUN REV: Not In VersionControl
LAYER NAME = Bottom Solder	TID #: N/A		
PLOT NAME = Bottom Solder Mask	GENERATED : 7/19/2019 7:53:55 AM	TEXAS INSTRUMENTS	

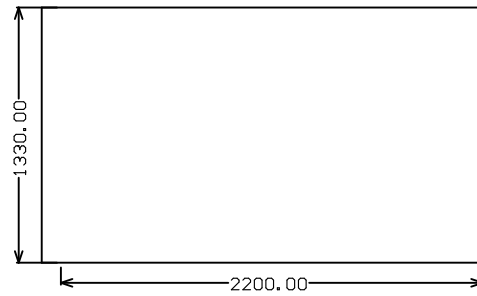


ALL ARTWORK VIEWED FROM TOP SIDE	BOARD #: PA026	REV: B	SUN REV: Not In VersionControl
LAYER NAME = Bottom Overlay	TID #: N/A		
PLOT NAME = Bottom Overlay	GENERATED : 7/19/2019 7:53:56 AM	TEXAS INSTRUMENTS	

Symbol	Quantity	Finished Hole Size	Plated	Hole Type	Drill Layer Pair	Tolerance
☆	13	16.00mil (0.406mm)	PTH	Round	Top Layer - Bottom Layer	
□	5	35.00mil (0.889mm)	PTH	Round	Top Layer - Bottom Layer	
▽	9	50.00mil (1.270mm)	PTH	Round	Top Layer - Bottom Layer	
⊗	3	80.71mil (2.050mm)	PTH	Round	Top Layer - Bottom Layer	
	30 Total					



ALL ARTWORK VIEWED FROM TOP SIDE	BOARD #: PA026	REV: B	SUN REV: Not In VersionControl
LAYER NAME = Drill Drawing	TID #: N/A		
PLOT NAME = Drill Drawing	GENERATED : 7/19/2019 7:53:57 AM	TEXAS INSTRUMENTS	



ALL ARTWORK VIEWED FROM TOP SIDE	BOARD #: PA026	REV: B	SUN REV: Not In VersionControl
LAYER NAME = M2 Board Dimensions	TID #: N/A		
PLOT NAME = Board Dimensions	GENERATED : 7/19/2019 7:53:58 AM	TEXAS INSTRUMENTS	