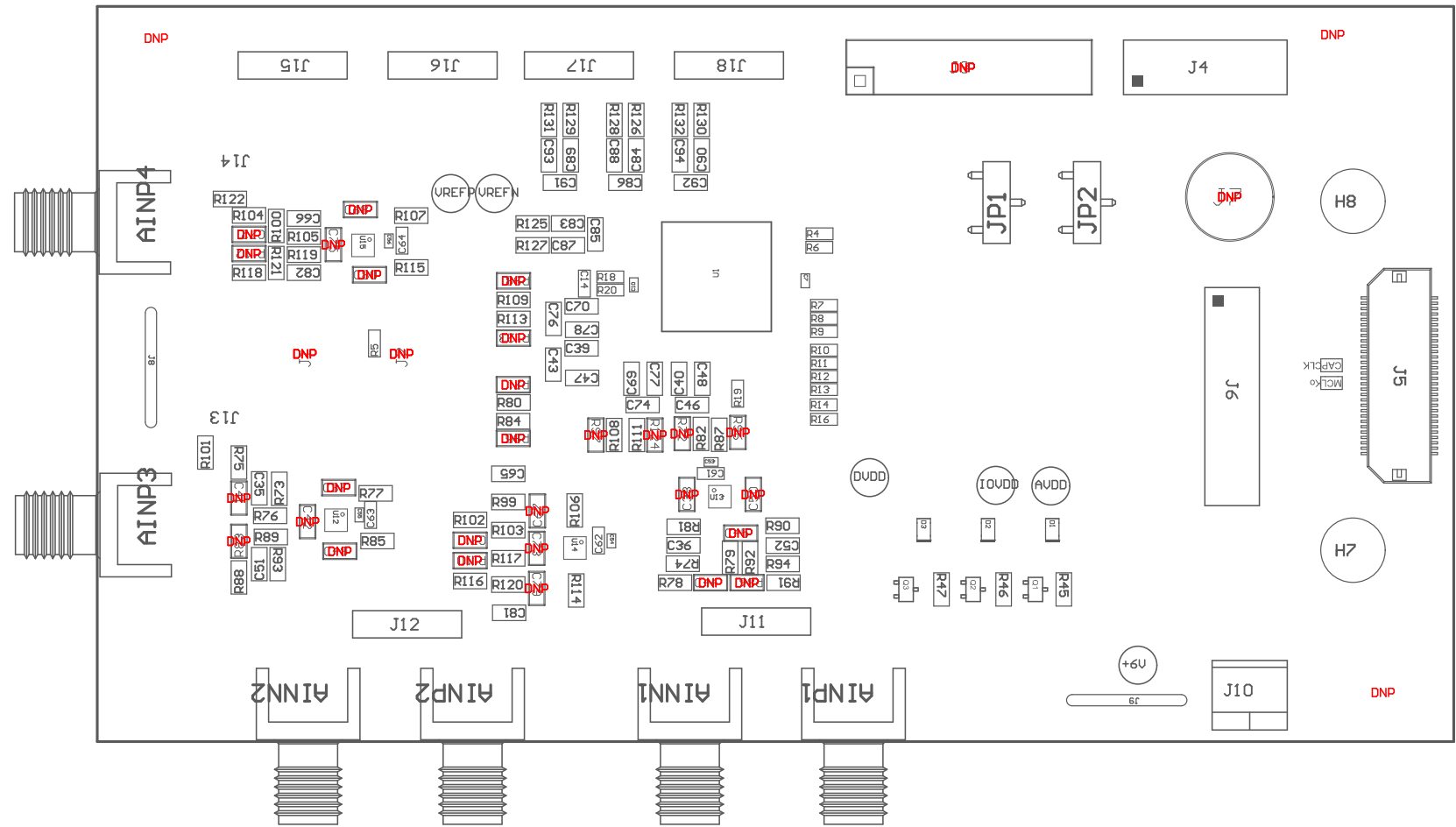
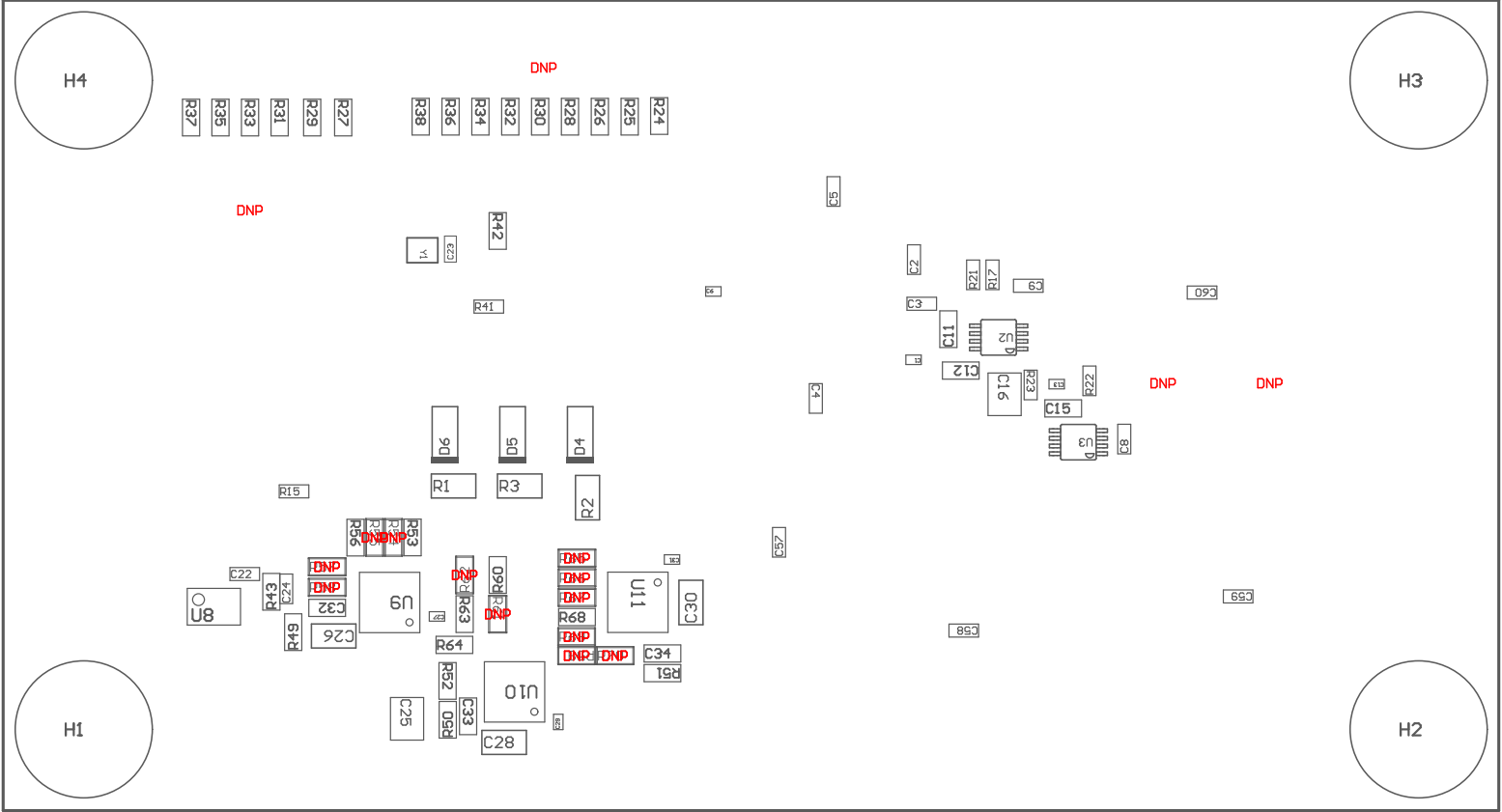


- ZZ1 ■These assemblies are ESD sensitive, ESD precautions shall be observed.
- ZZ2 ■These assemblies must be clean and free from flux and all contaminants. Use of no clean flux is not acceptable.
- ZZ3 ■These assemblies must comply with workmanship standards IPC-A-610 Class 2, unless otherwise specified.
- ZZ4 ■Place H5 and H6 screws in H7 and H8 standoffs.
- ZZ5 ■Place SH-J1 on JP1, pins 1-2 : Place SH-J2 on JP2, pins 1-2



PCB VIEWED FROM TOP SIDE	BOARD #:	REV:	Not in version control
	TID #:		
PLOT NAME =	GENERATED :		



PCB VIEWED FROM BOTTOM SIDE	BOARD #:	REV:	Not in version control
	TID #:		
PLOT NAME =	GENERATED :		