

Cross section view

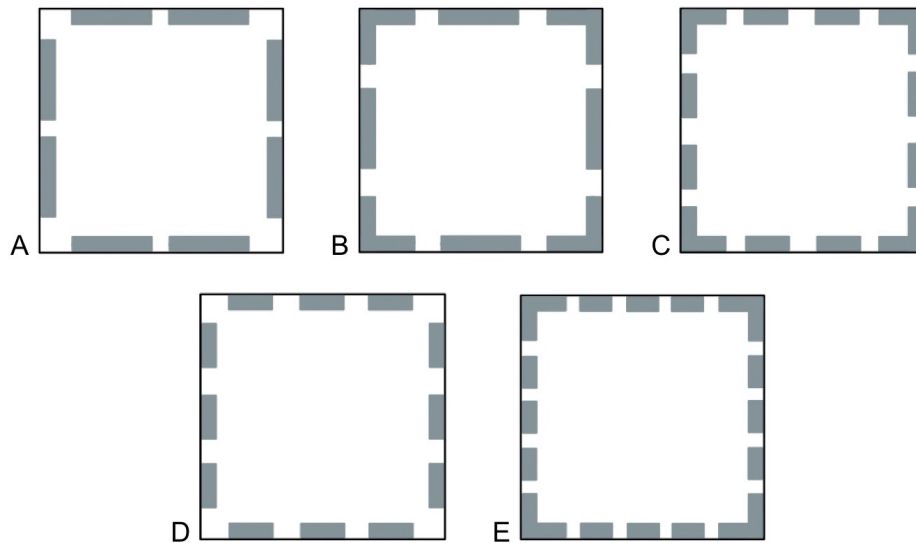


Figure 2-4. Novel electrode designs. Configurations A) TwoSides B) SideCorner C) CornerTwoSides D) ThreeSides, and E) ThreeSidesCorner.

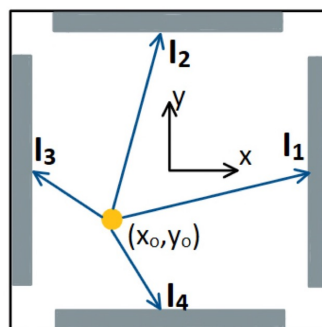


Figure 2-5. Tetralateral PSD under nonuniform illumination. The photocurrent generated by yellow laser spot is divided to four contacts along the perimeter. The X and Y coordinate system has the origin in the center of the device.