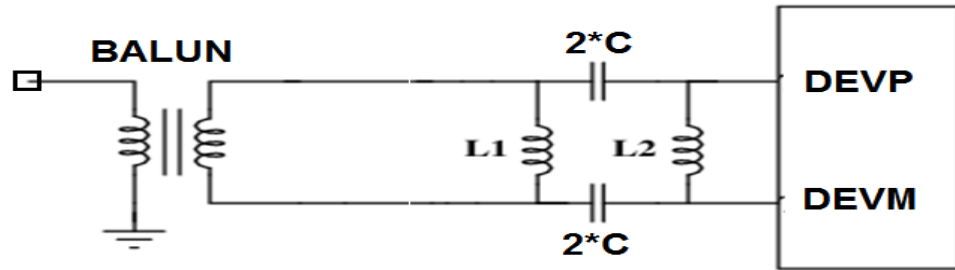
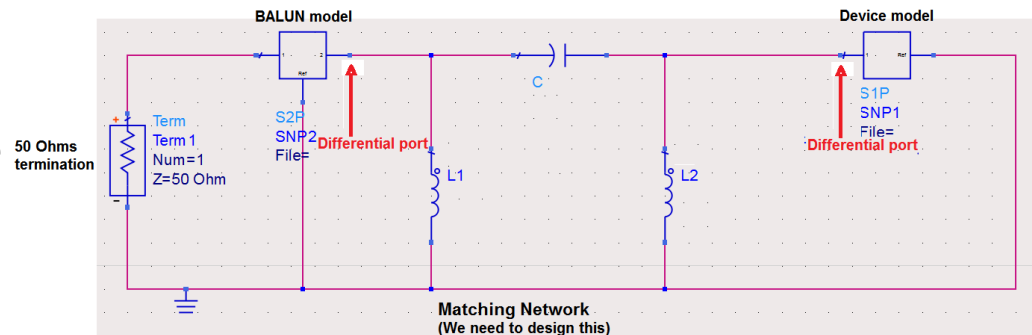


Simulation setup in ADS

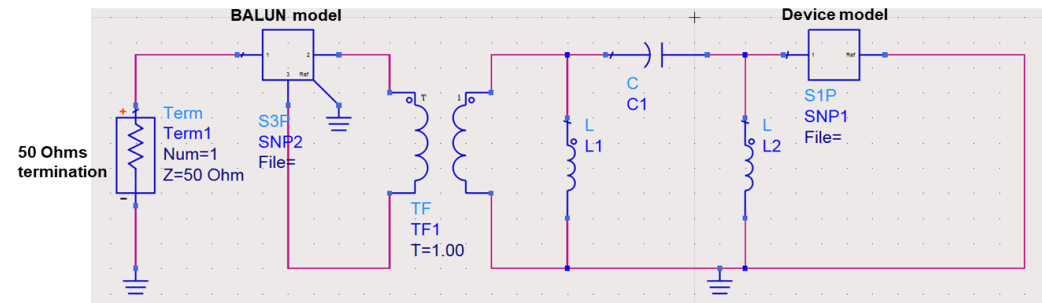
Actual circuit on board



If Balun model is having single ended output



If Balun model is having differential output



Notes:

- Copy the .pdfs into notepad and store .s1p
- There are three pdfs for Rx, Tx and FB
 - FB_IMP_DEVICE_PINS.pdf -> FB_IMP_DEVICE_PINS.s1p
 - TX_IMP_DEVICE_PINS.pdf -> TX_IMP_DEVICE_PINS.s1p
 - RX_IMP_DEVICE_PINS.pdf -> RX_IMP_DEVICE_PINS.s1p
- Frequency range for RX/FB/TX is from 500MHz to 6.5GHz
- Updated files have fixed the discontinuity in certain range due to interpolation error while de-embedding