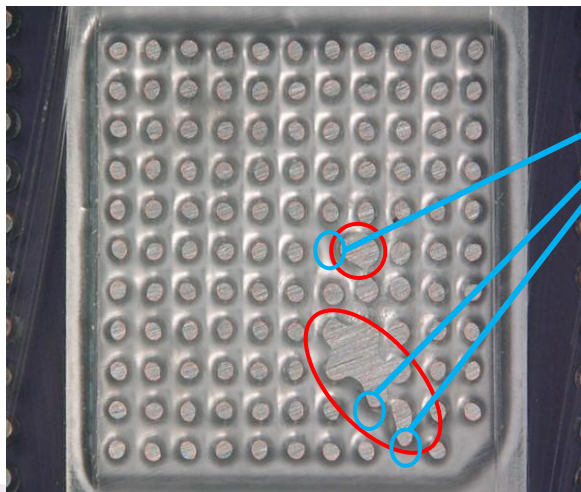


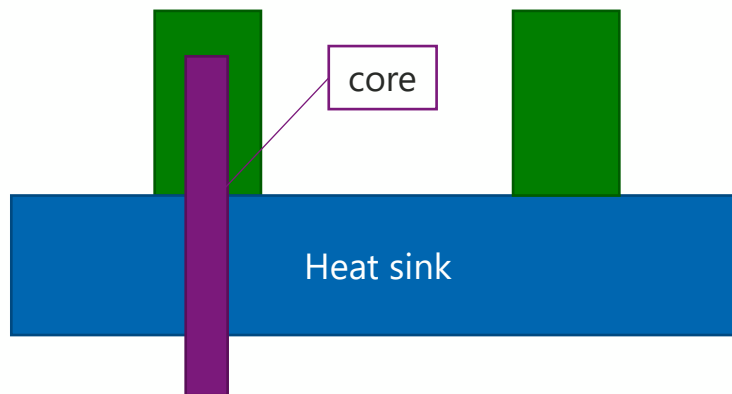
Question for Inner column specifications

◆ Additional Question for Inner column specifications.

- We made a horizontal cut to check the soldering condition of the inner column.
 - ✓ The column moves at the blue circle (package side only)
- Is there a **core** in the inner column?



Is there a **core** in the inner column?



Question for Inner column specifications

◆ Question for Inner column specifications.

Previously sent pages

- We made a horizontal cut to check the soldering condition of the inner column.
 - ✓ The column is soldered to form a bridge at the red circle (package side only)
 - ✓ The column moves at the blue circle (package side only)
- Does this column consist of solder only?

