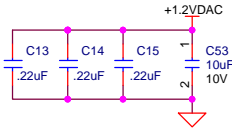
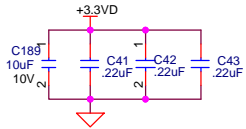
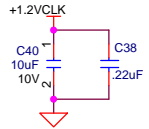
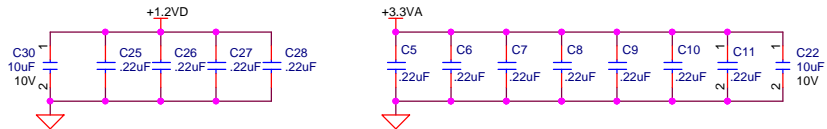


NOTES:

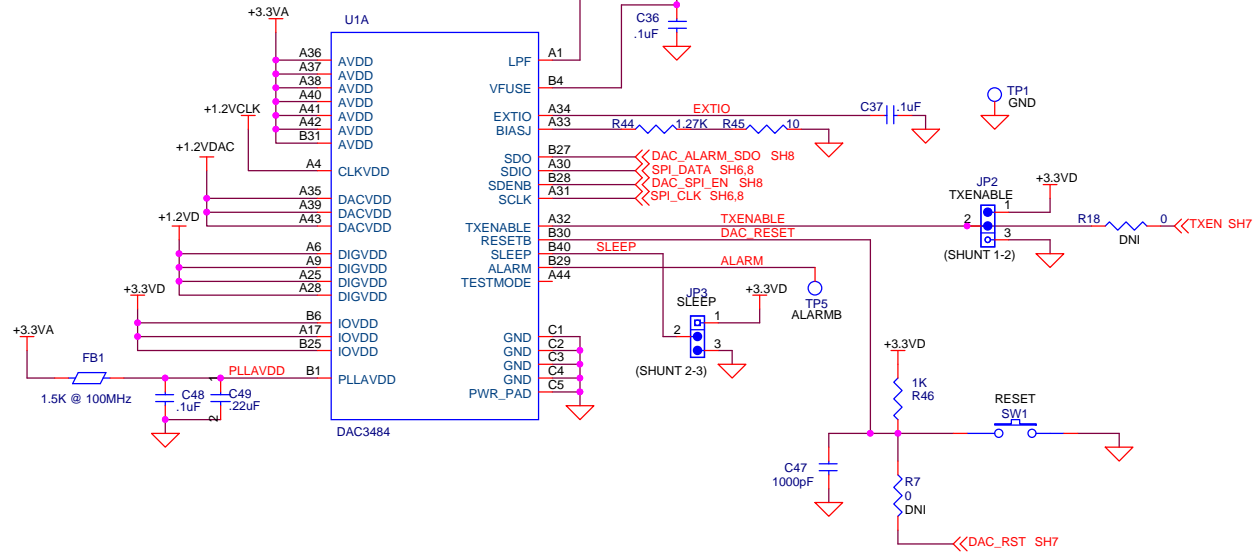
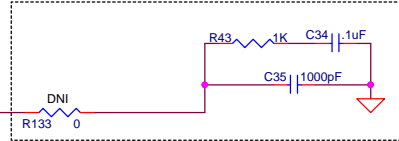
- 1) DNI = DO NOT INSTALL



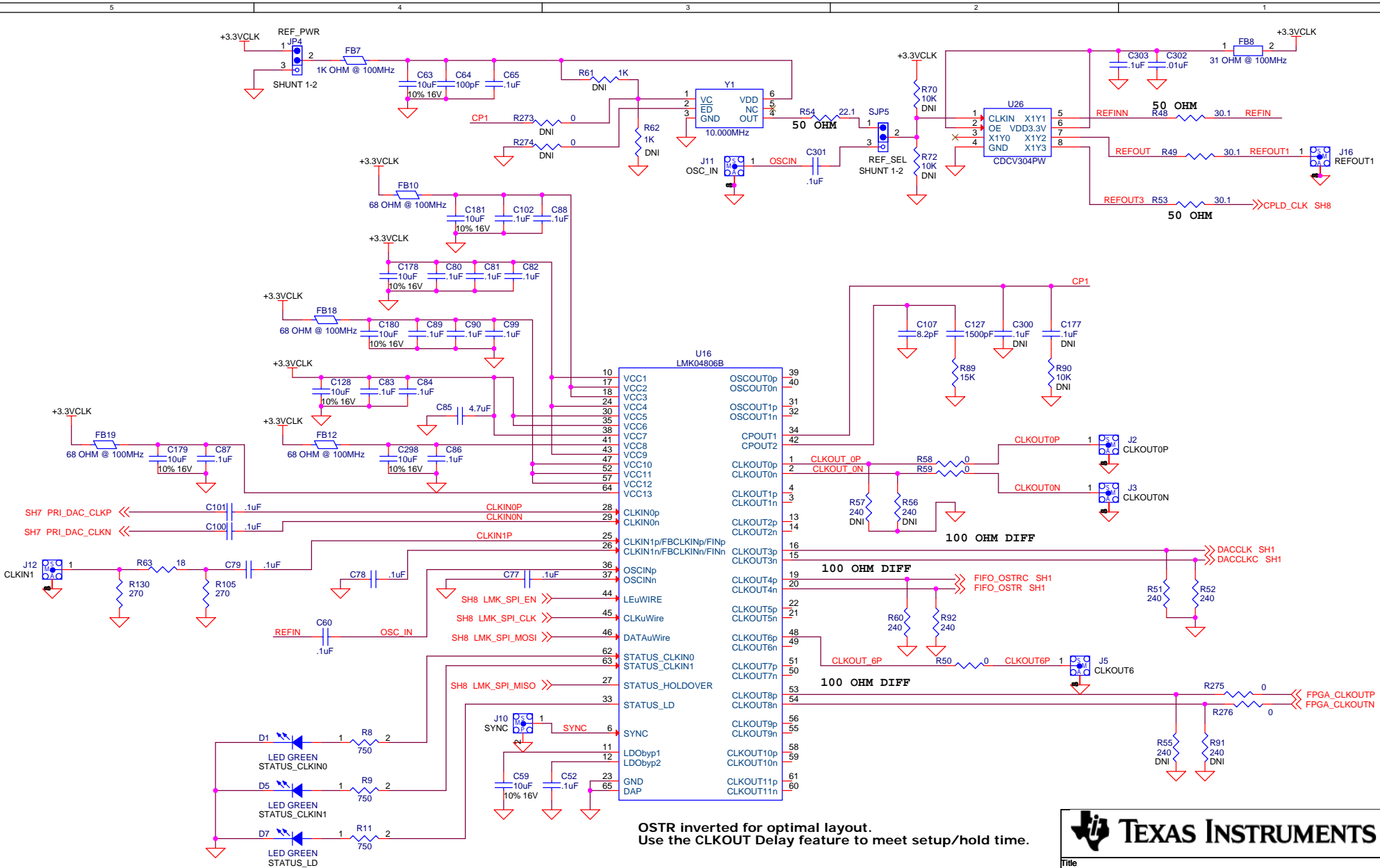
Title		TSW3084 EVM	
Size	Document Number	Rev	
B	DAC	D	
Drawn: L. Nguyen	Date: Wednesday, August 22, 2012	Sheet	1 of 9
Engineer: K. Hsia			



Place as close to the DAC as possible on top side of board



Title		
TSW3084 EVM		
Size	Document Number	Rev
B	DAC	D
Date:	Wednesday, August 22, 2012	Sheet 2 of 9



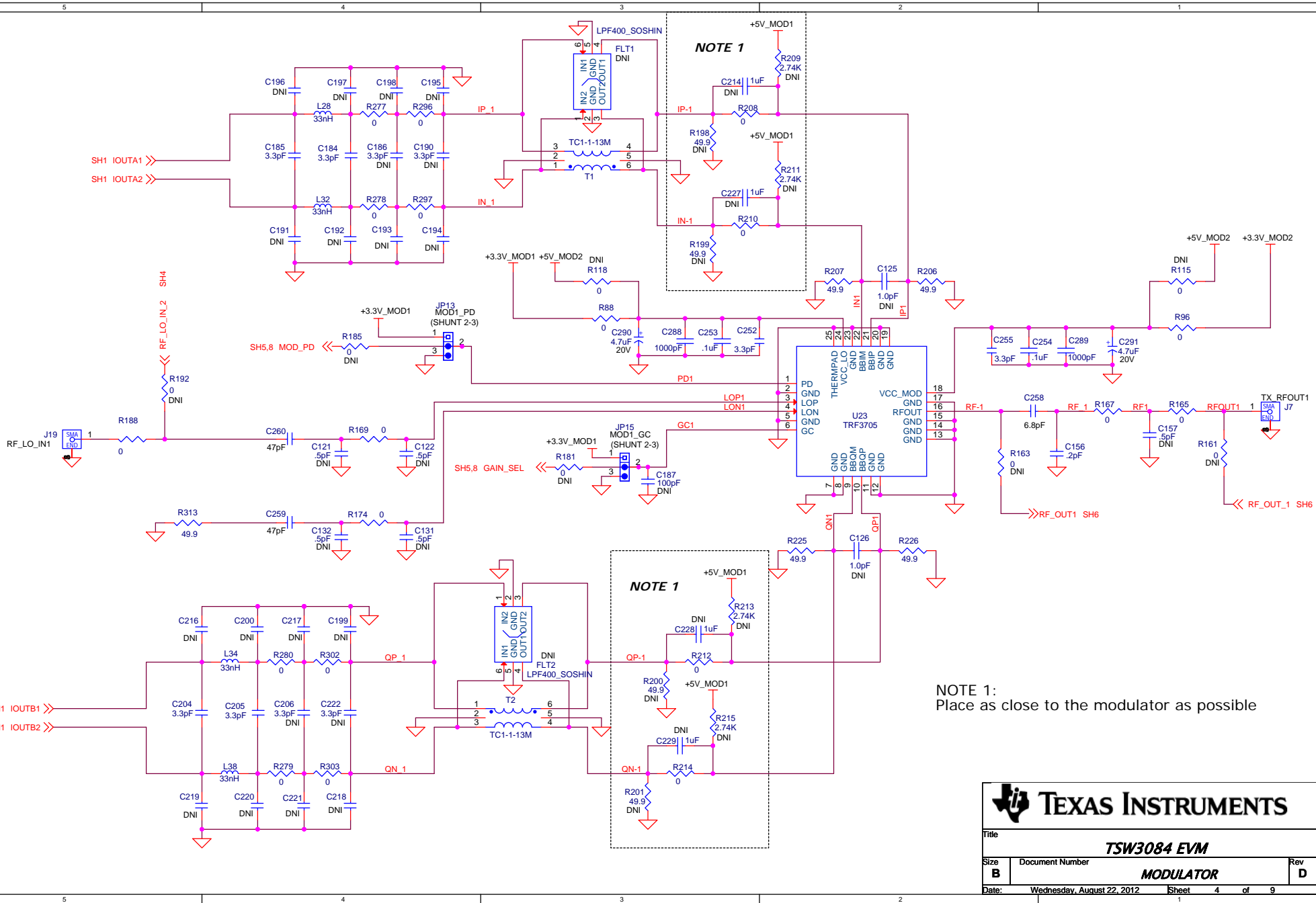
OSTR inverted for optimal layout.
Use the CLKOUT Delay feature to meet setup/hold time.

TEXAS INSTRUMENTS

Title: **TSW3084 EVM**

Size: **B** Document Number: **CLOCK** Rev: **D**

Date: **Wednesday, August 22, 2012** Sheet: **3** of **9**



NOTE 1

NOTE 1

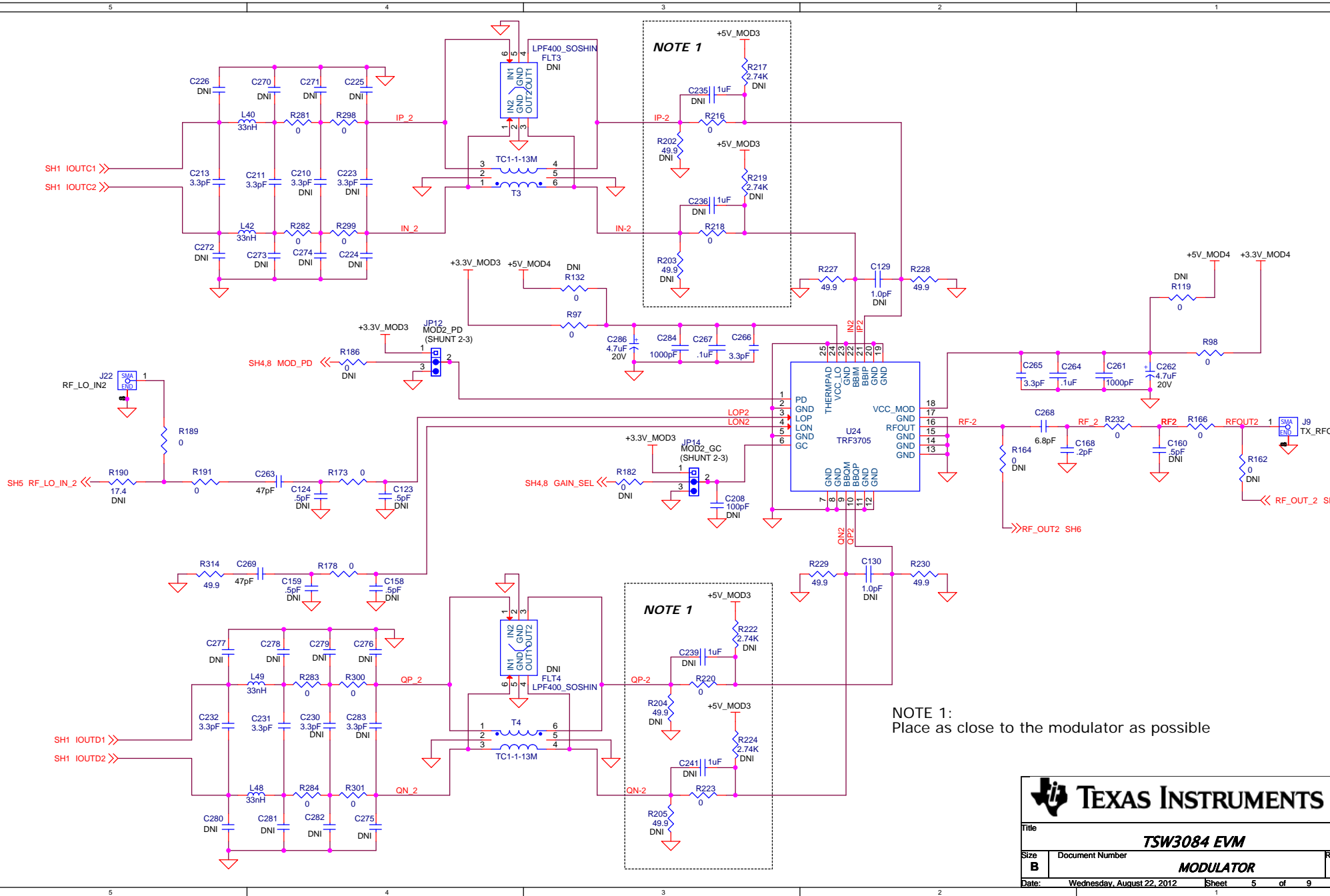
NOTE 1:
Place as close to the modulator as possible

TEXAS INSTRUMENTS

Title: **TSW3084 EVM**

Size **B** Document Number **MODULATOR** Rev **D**

Date: **Wednesday, August 22, 2012** Sheet **4** of **9**



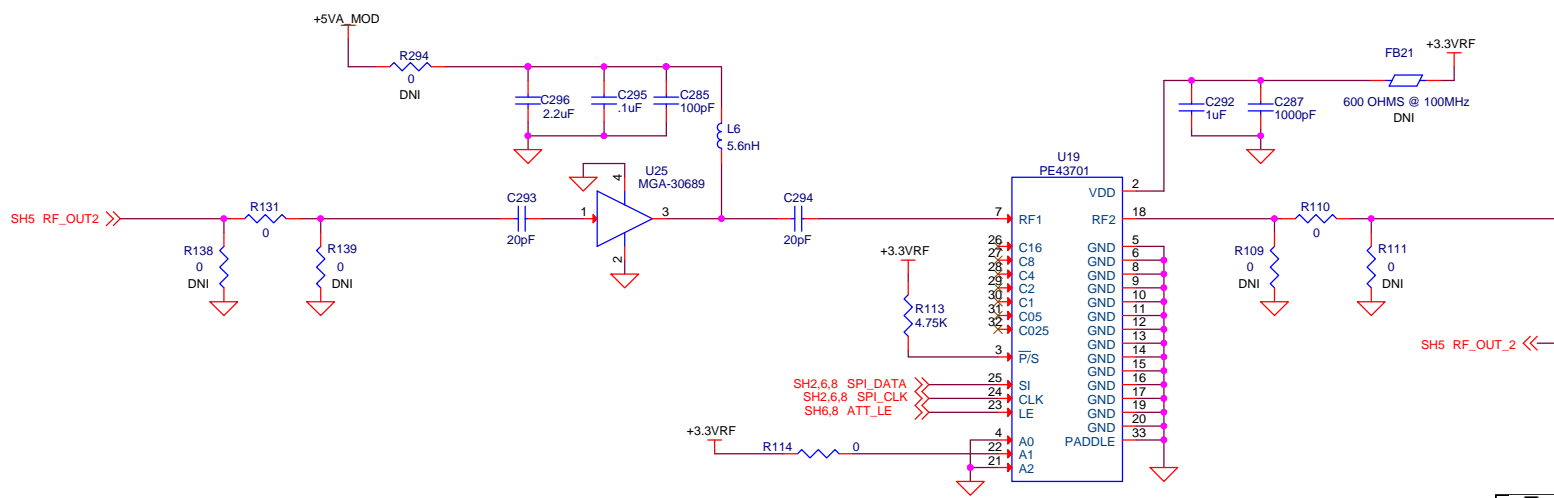
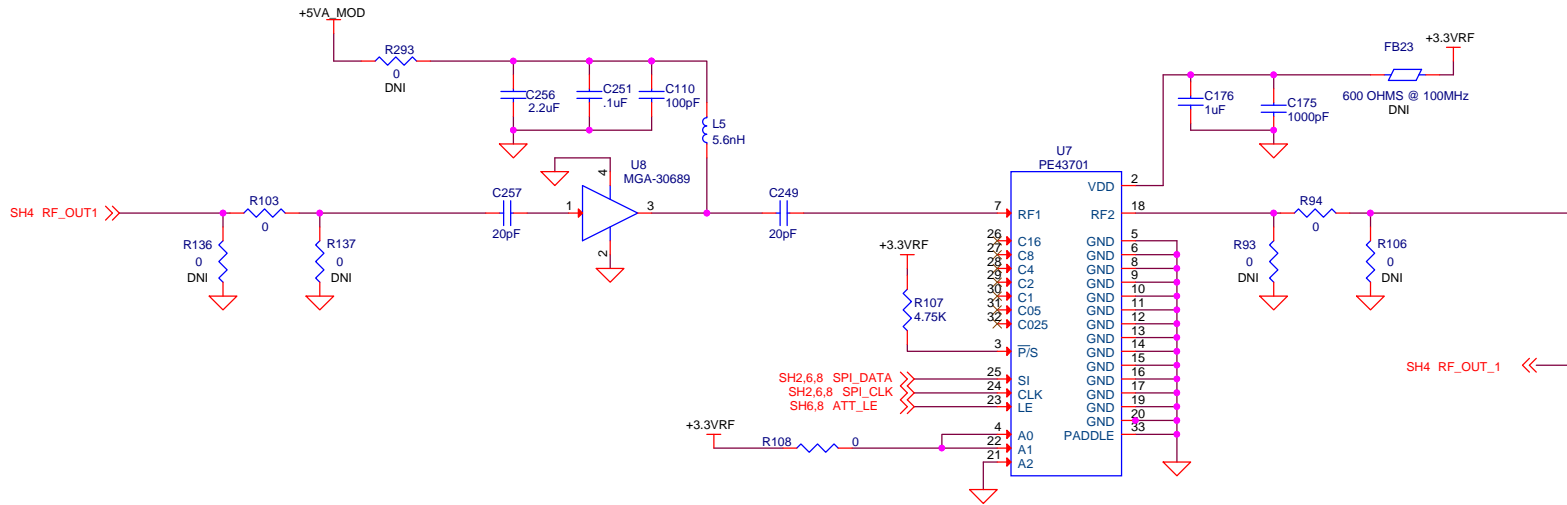
NOTE 1

NOTE 1

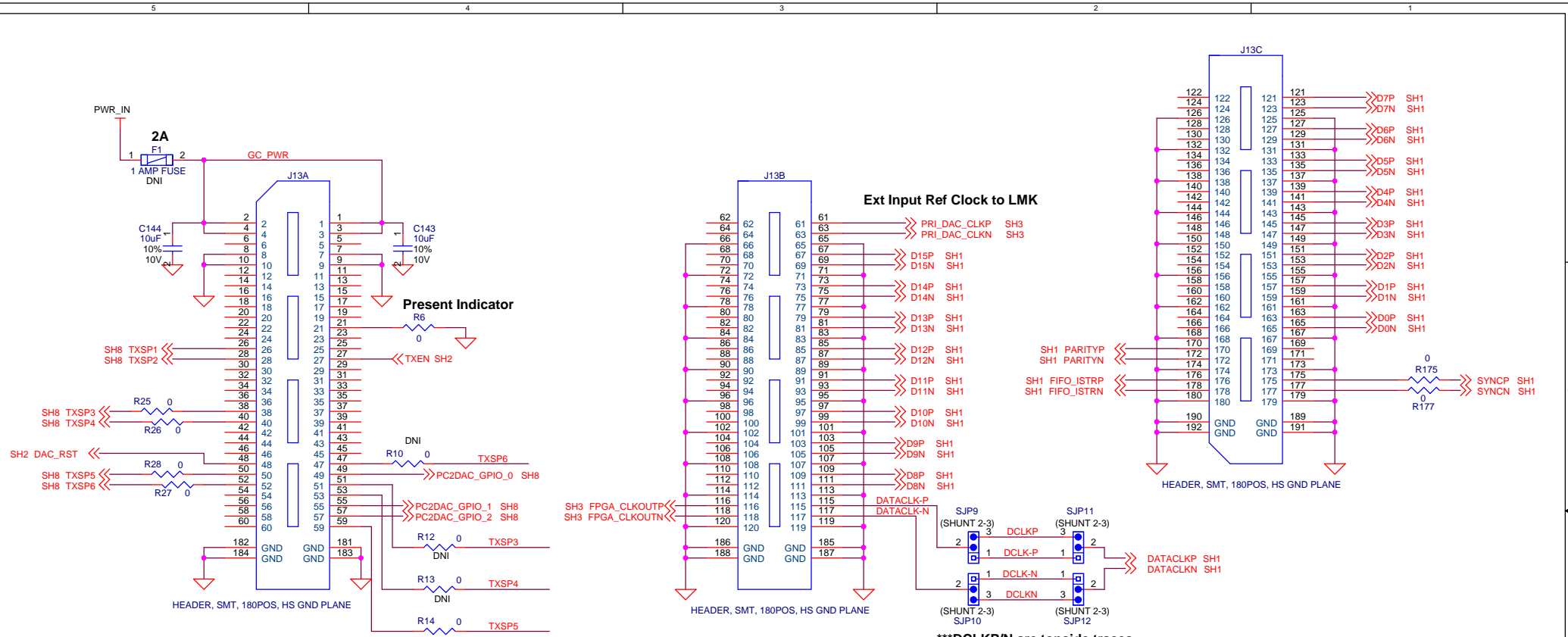
NOTE 1:
Place as close to the modulator as possible

TEXAS INSTRUMENTS

Title		TSW3084 EVM	
Size	Document Number	MODULATOR	
B			D
Date:	Wednesday, August 22, 2012	Sheet	5 of 9



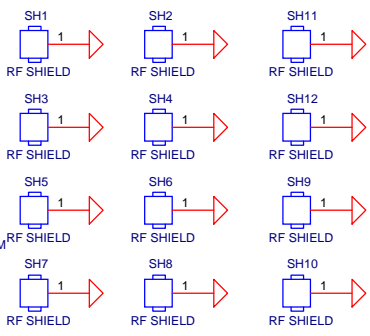
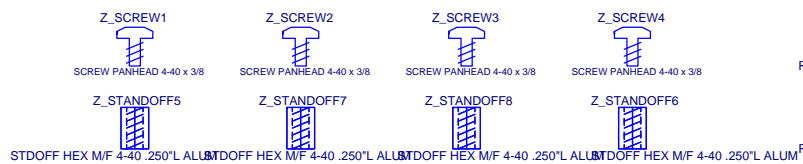
Title		
TSW3084EVM		
Size	Document Number	Rev
B	TX AMPLIFIER AND ATTENUATORS	D
Date:	Friday, August 17, 2012	Sheet 6 of 9



Ext Input Ref Clock to LMK

***DCLKP/N are topside traces

DCLK-P/N traces on the bottom side of board are 2" longer than DCLKP/N traces on top side.

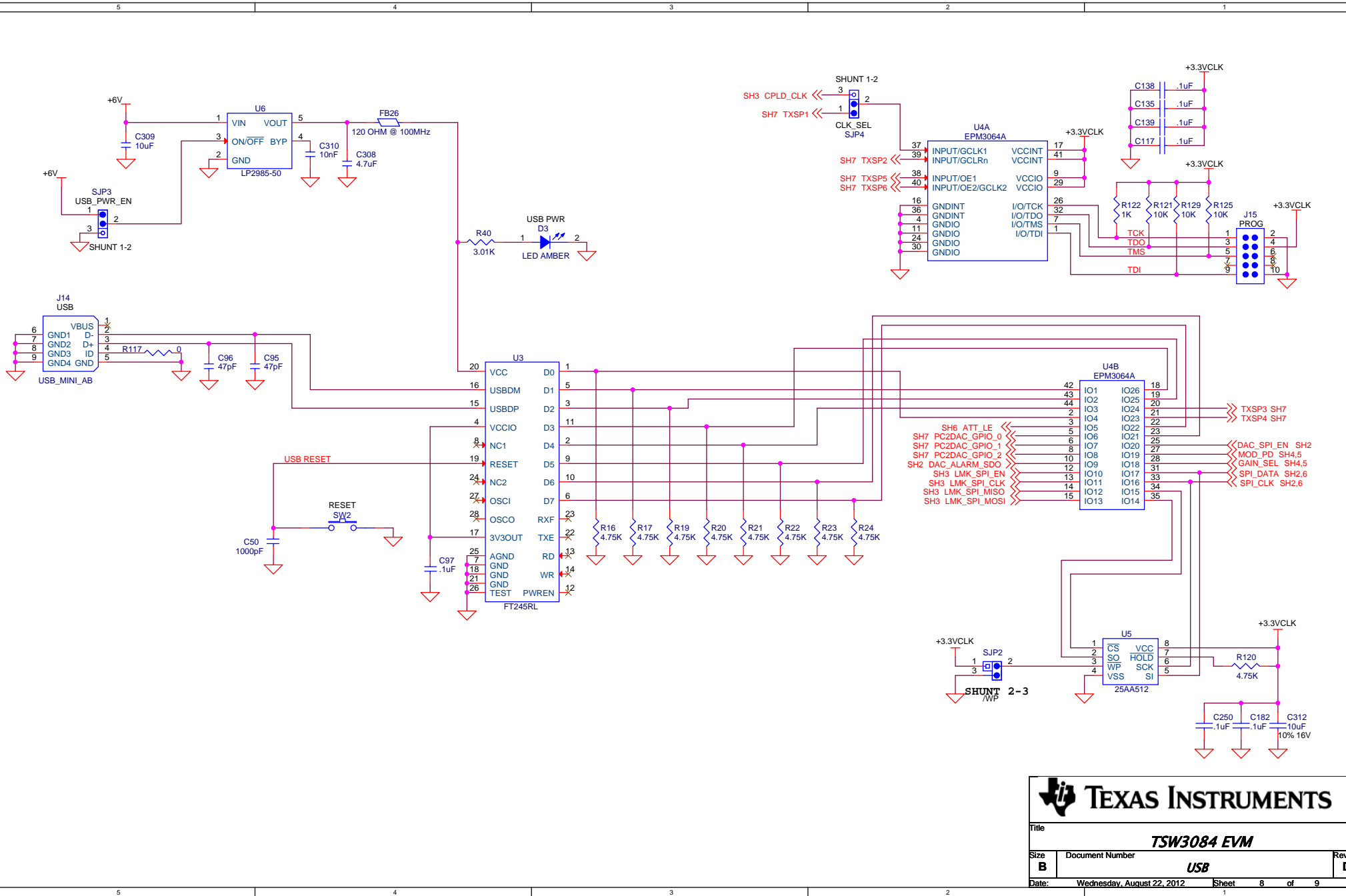


TEXAS INSTRUMENTS

Title: **TSW3084 EVM**

Size: **B** Document Number: **INTERFACE** Rev: **C**

Date: **Wednesday, August 22, 2012** Sheet: **7** of **9**

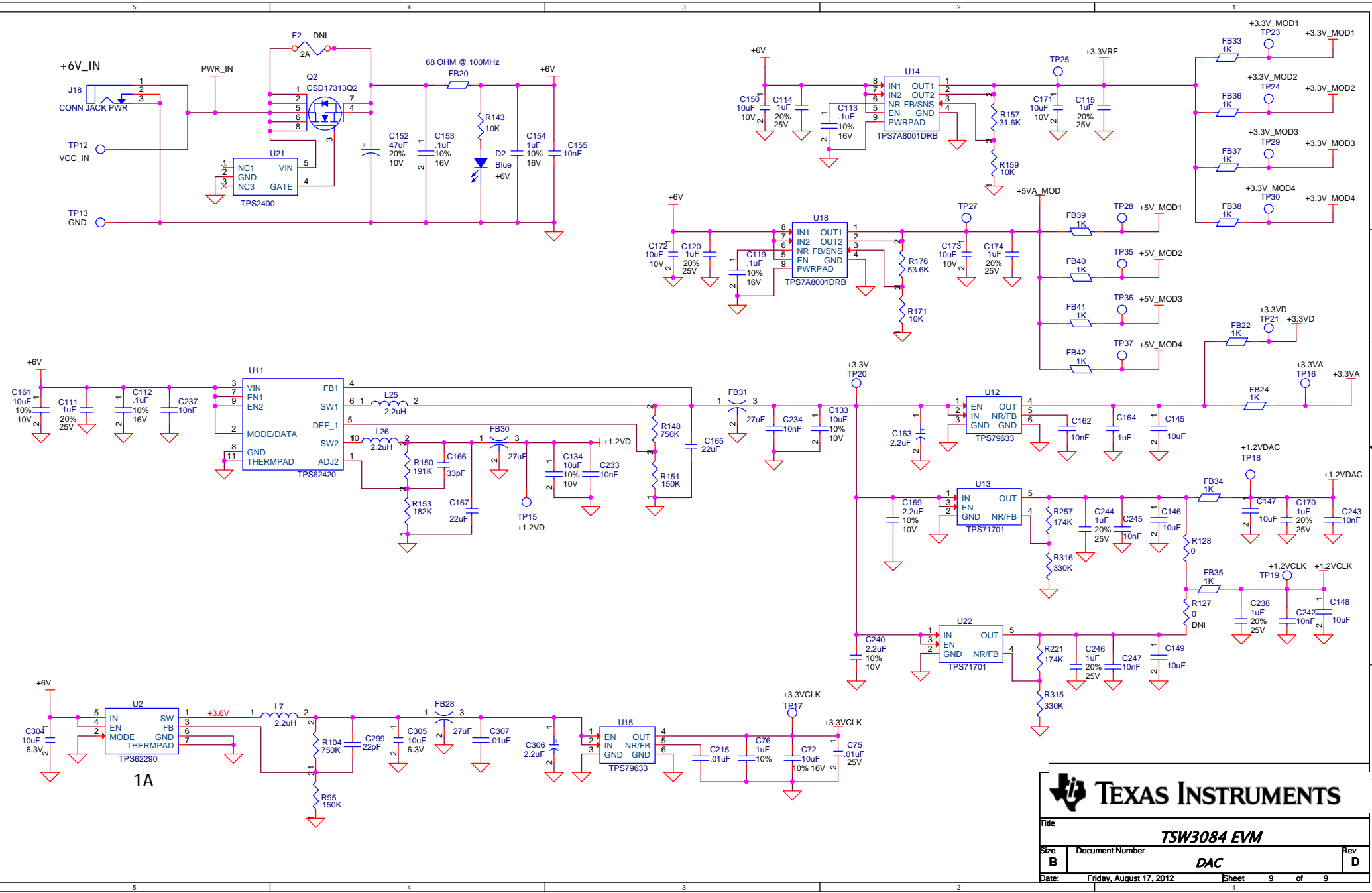


TEXAS INSTRUMENTS

Title: **TSW3084 EVM**

Size **B** Document Number **USB** Rev **D**

Date: **Wednesday, August 22, 2012** Sheet **8** of **9**



TEXAS INSTRUMENTS

Title: **TSW3084 EVM**

Size B	Document Number	DAC	Rev D
Date: Friday, August 17, 2012	Sheet	9	of 9