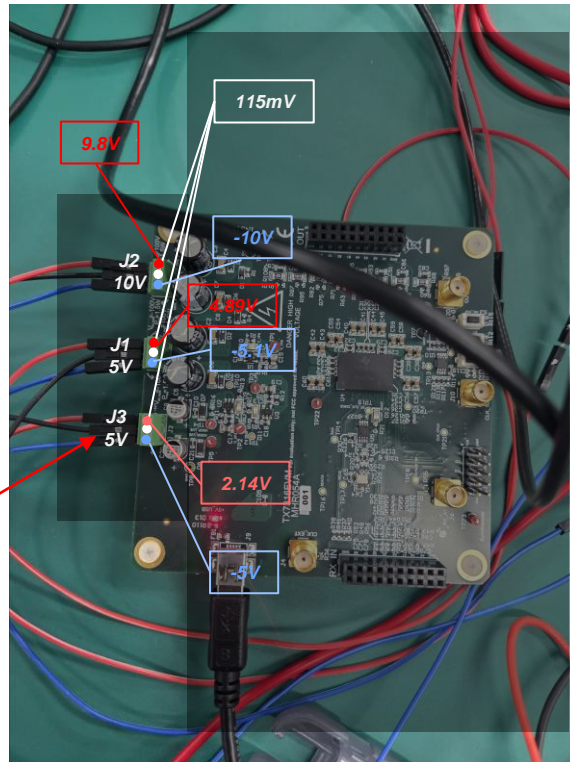


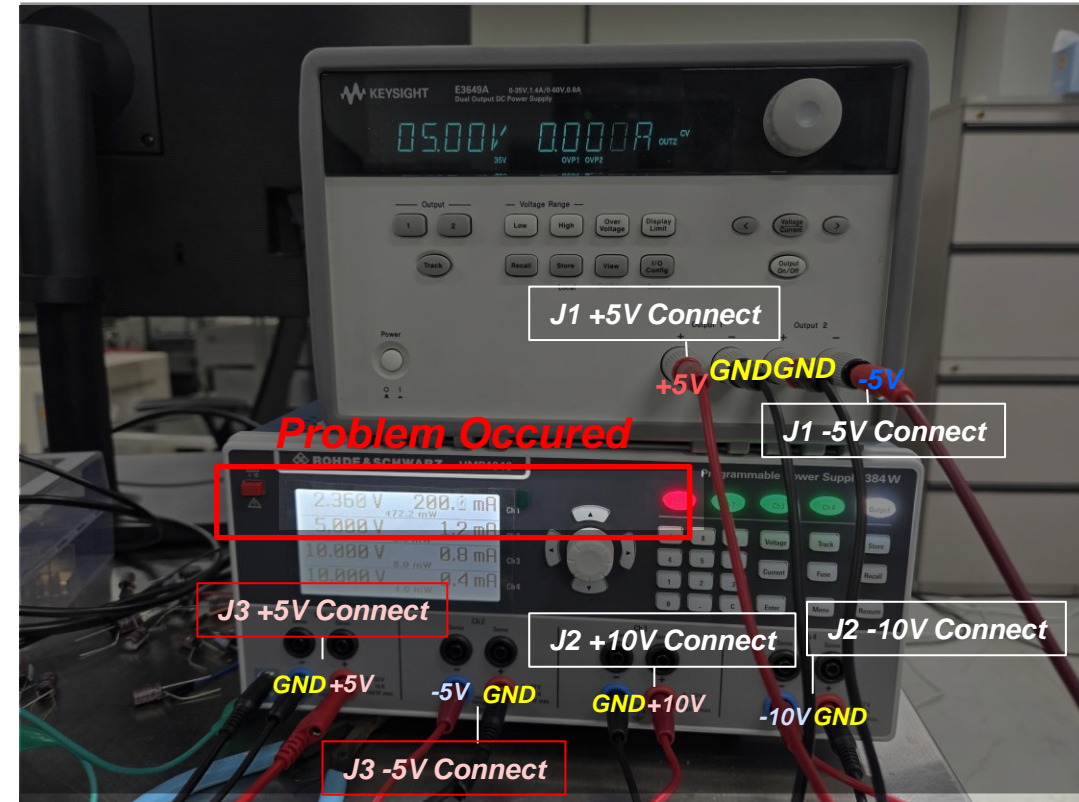
## ❖ Problem

- J3 =  $\pm 5V$ (200mA Limit), J1 =  $\pm 5V$ (30mA Limit), J2 =  $\pm 10V$ (30mA Limit)
- When applying a 5V supply (current limit set to 200 mA) to the 5V power input (J3)
  - the voltage does not rise above approximately 2.2V, and the current suddenly spikes (until 200mA) at around 2.2V.



It actually goes in 2.3 ~ 2.4V

EVM Connection

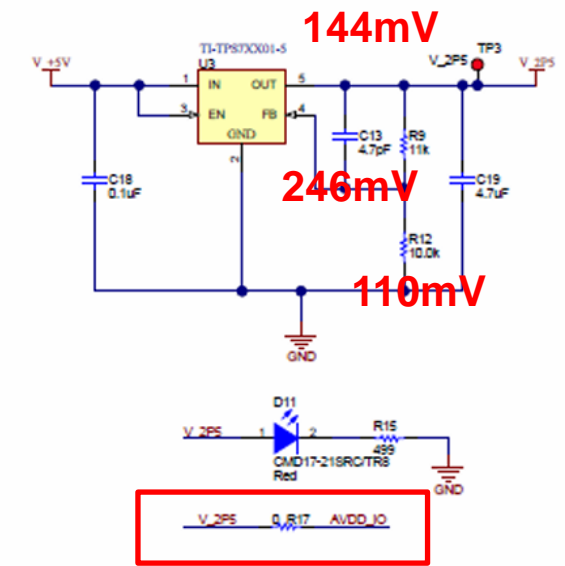
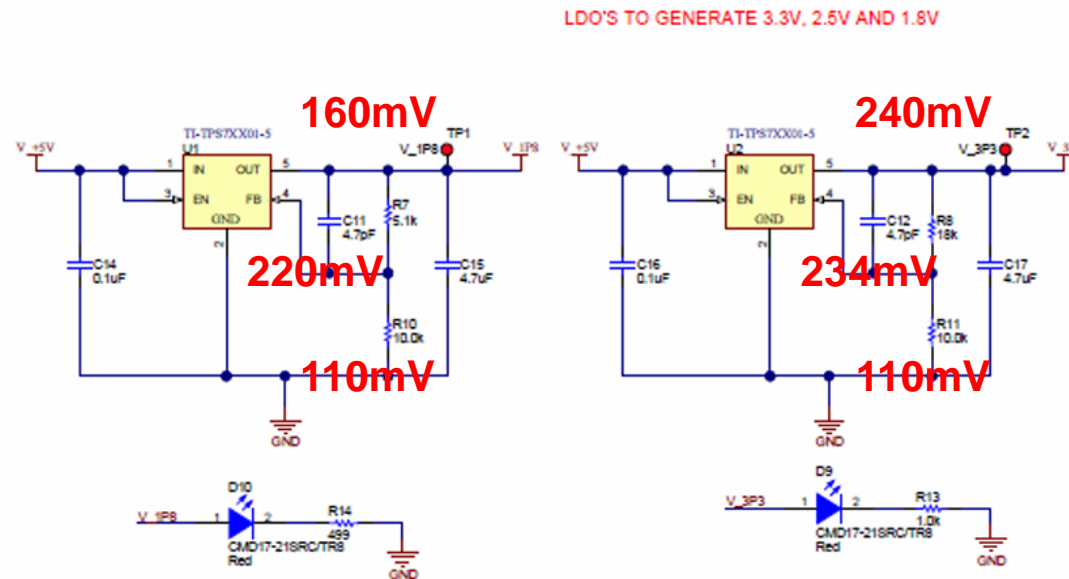
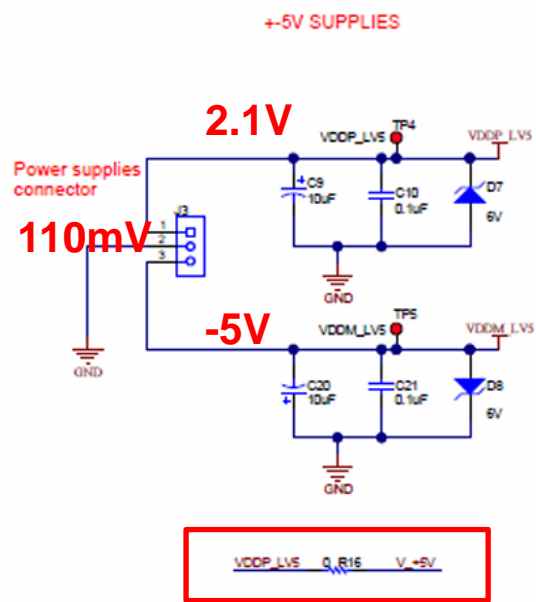


Power Supply Set & Problem

# EVM Problem

## ❖ Node Voltage Analysis Summary

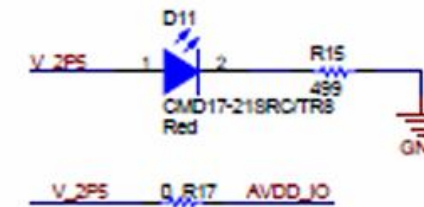
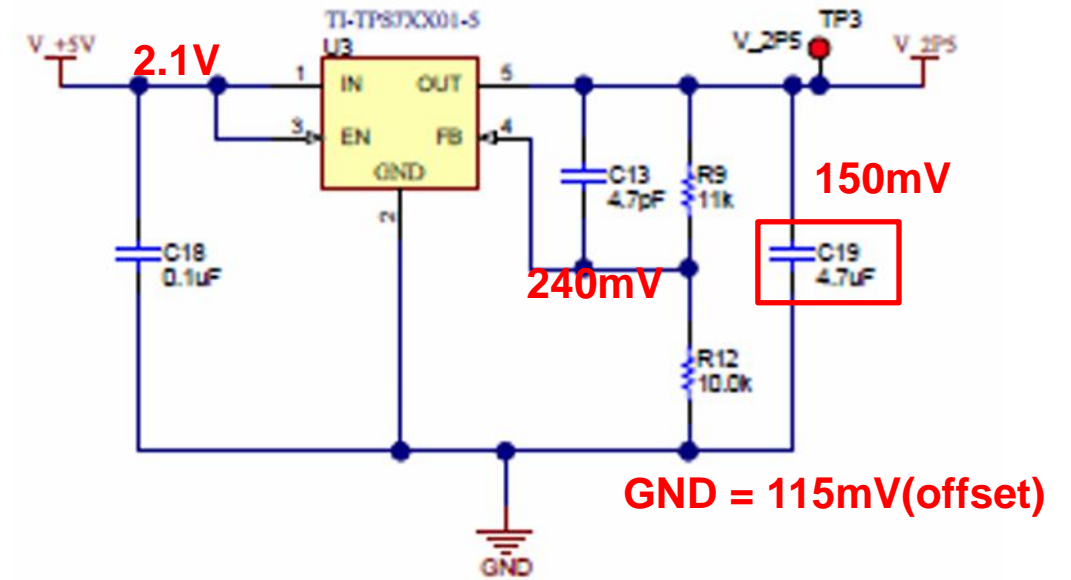
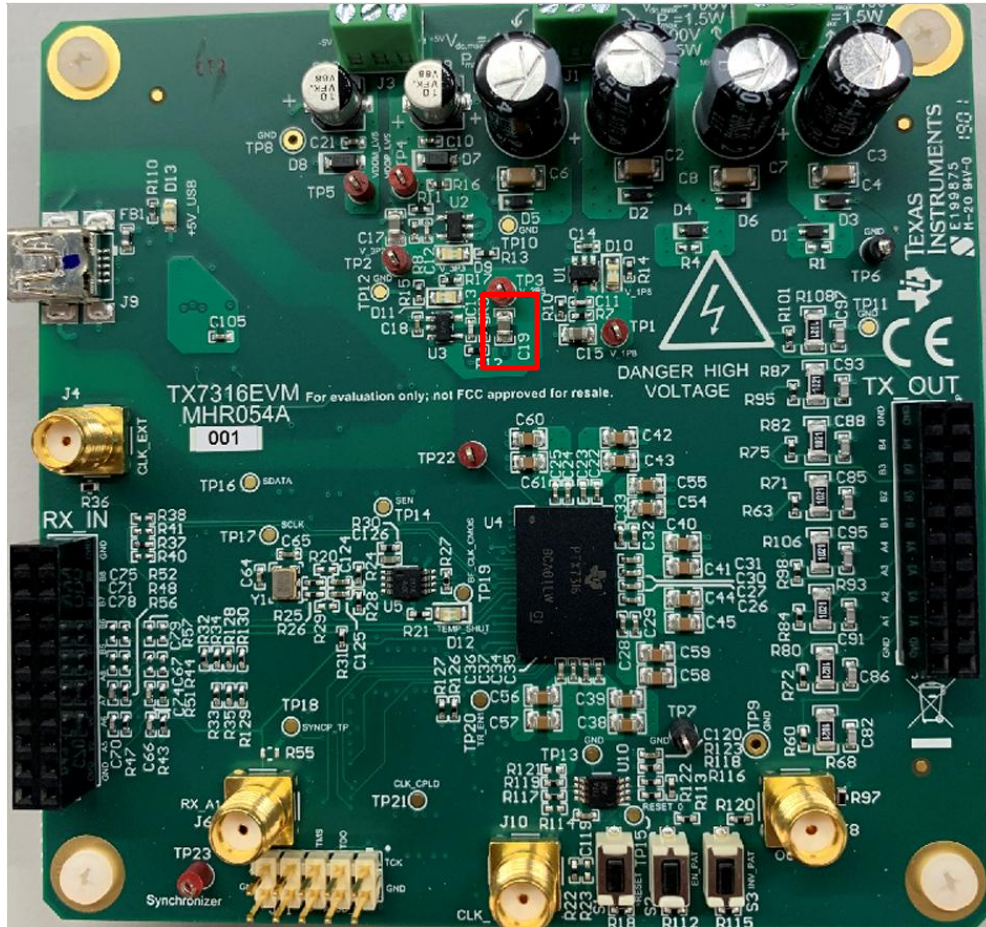
1. When performing a short test on the other unit, D9 lights up, while D10 and D11 do not illuminate.
2. As a result of the short test, shorts were detected only on R16 and R17. No shorts were found on the remaining components.



# EVM Problem

## ❖ Voltage Analysis

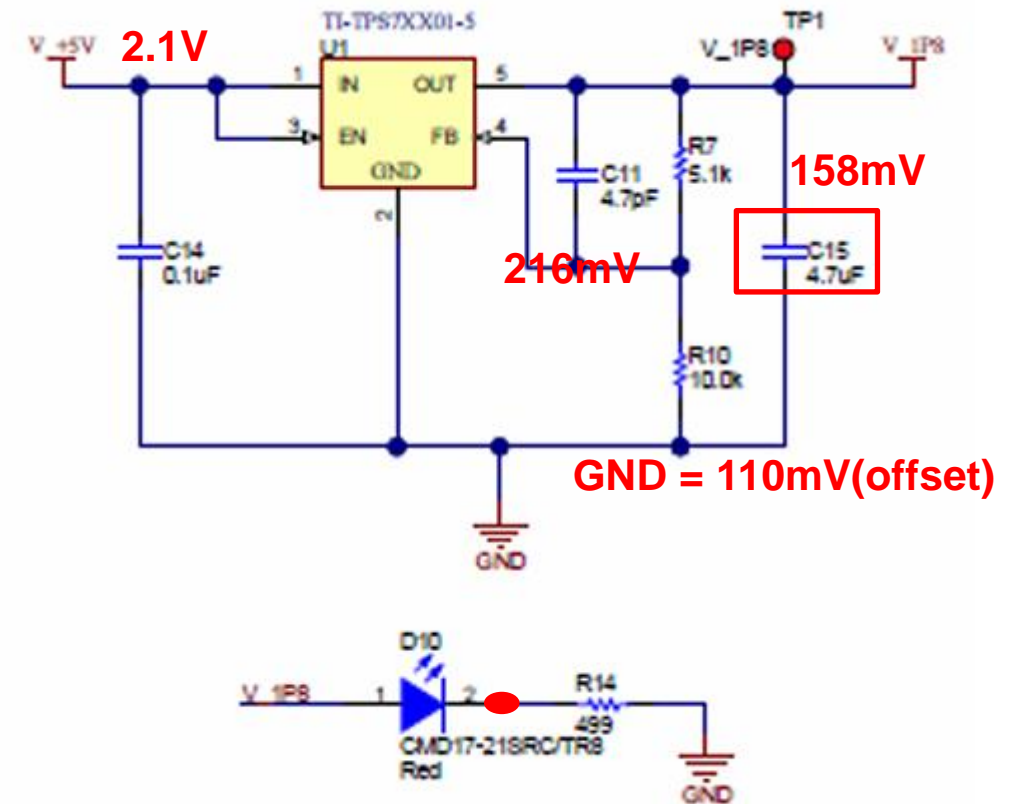
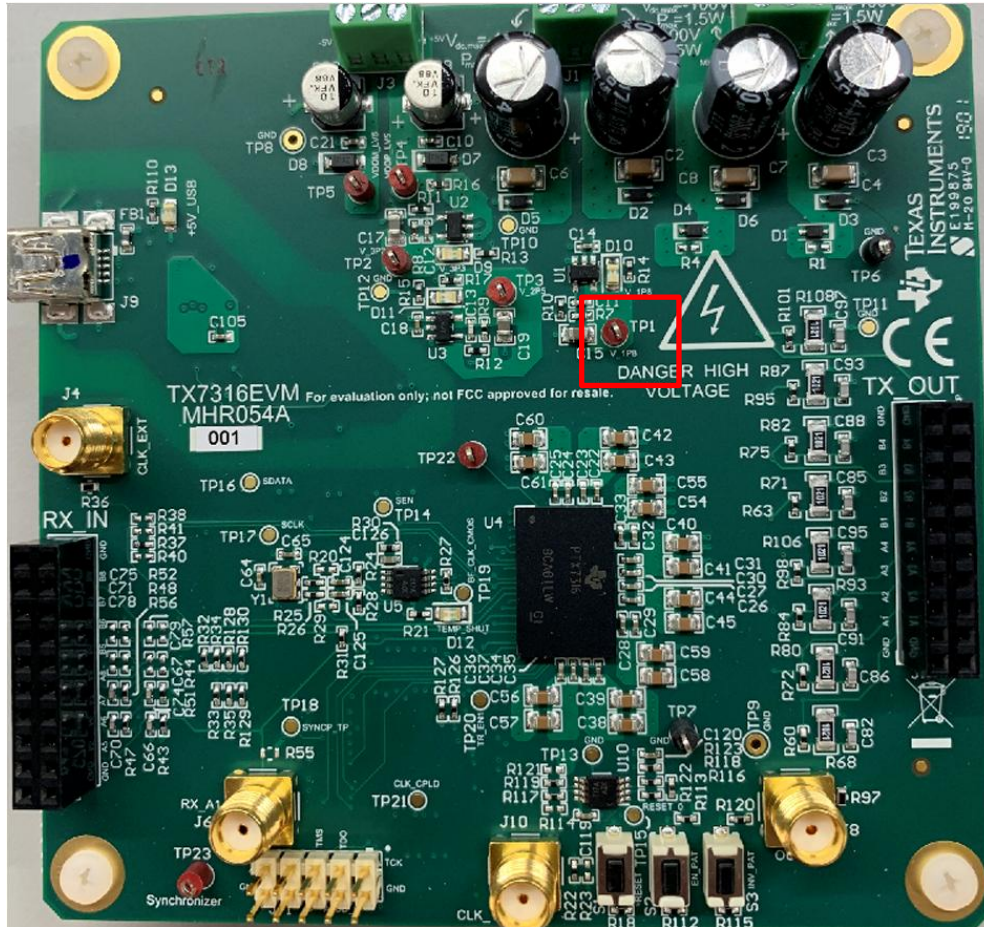
- TP3



# EVM Problem

## ❖ Voltage Analysis

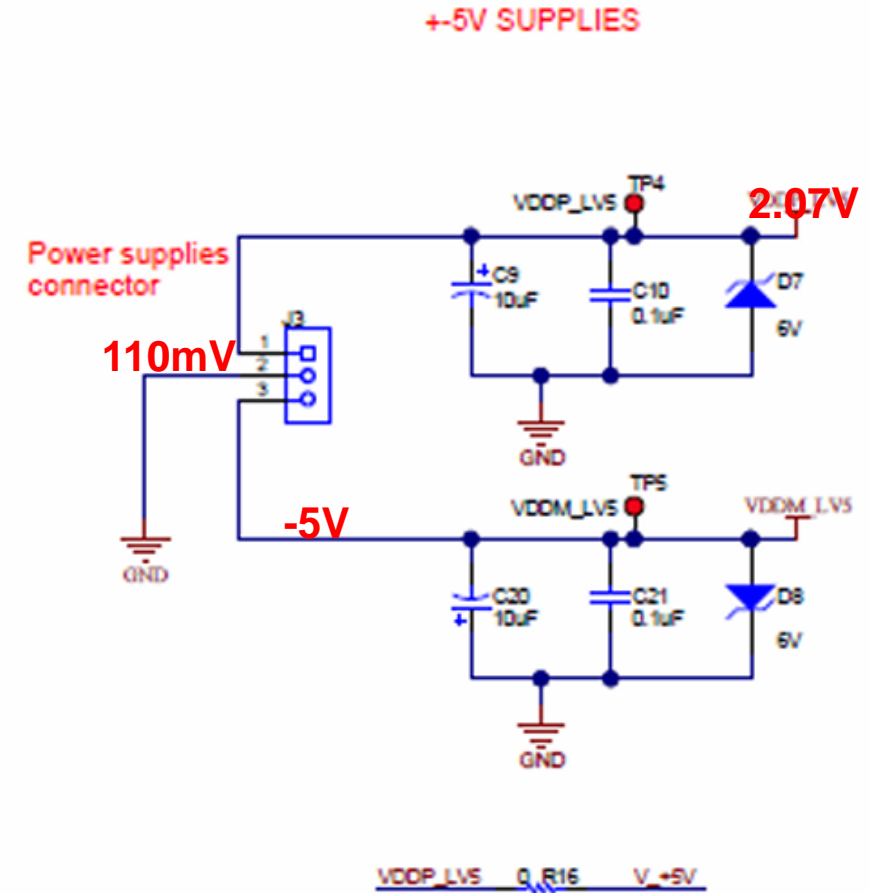
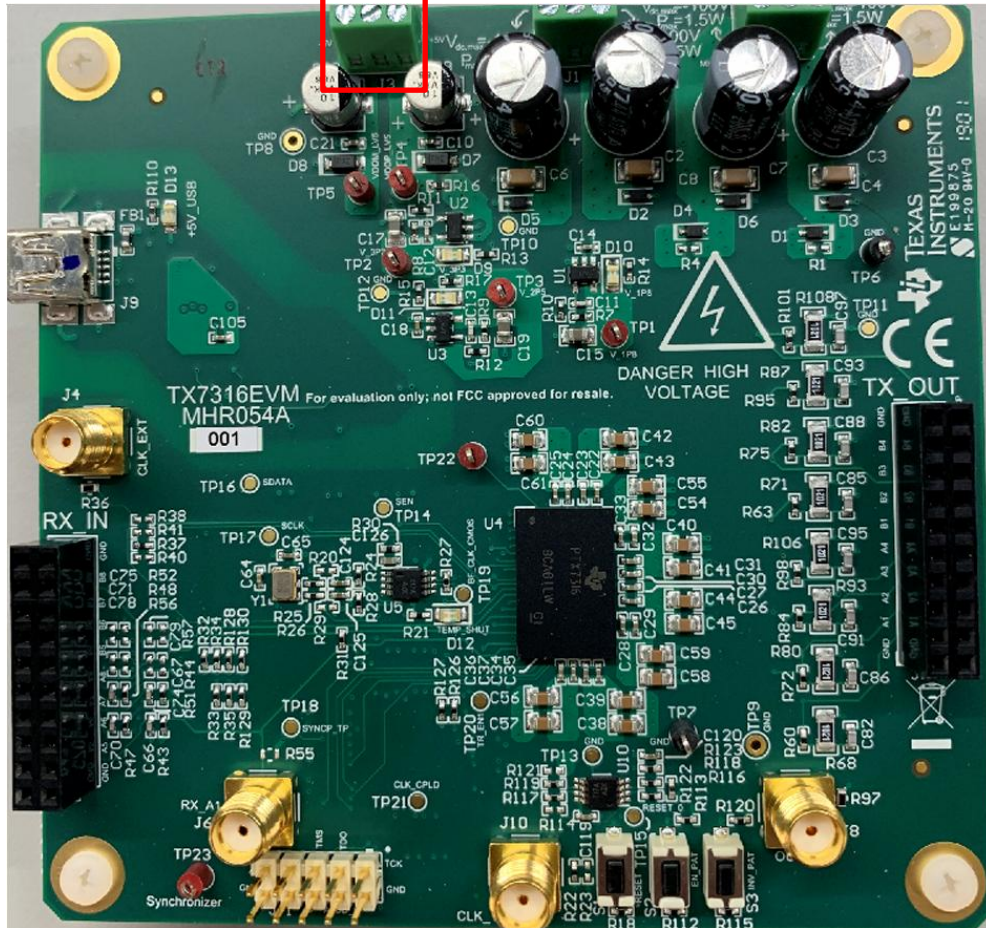
- TP1



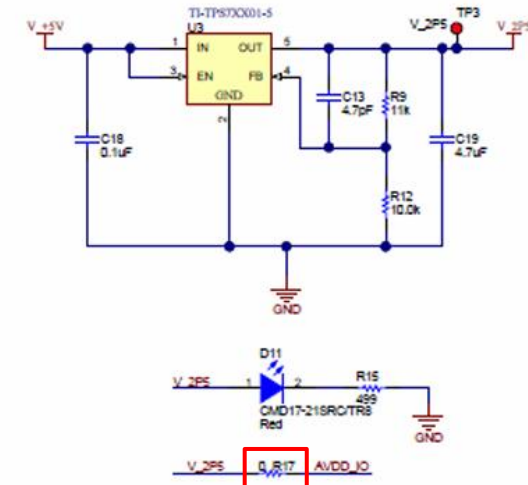
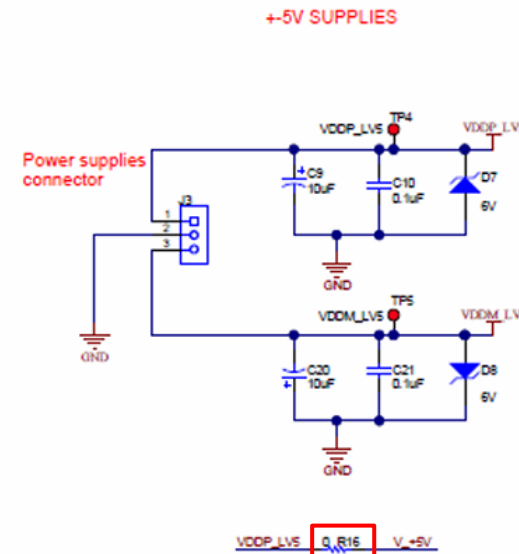
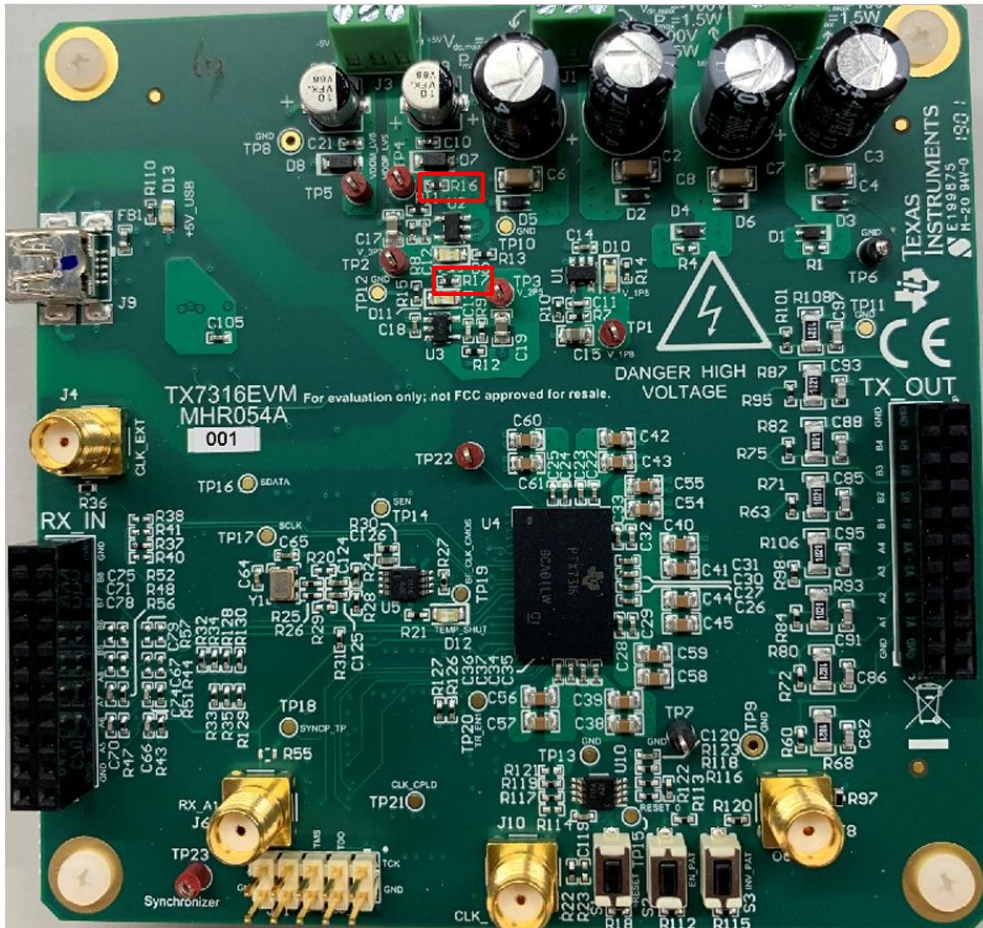
# EVM Problem

## ❖ Voltage Analysis

- 5V Power Supply



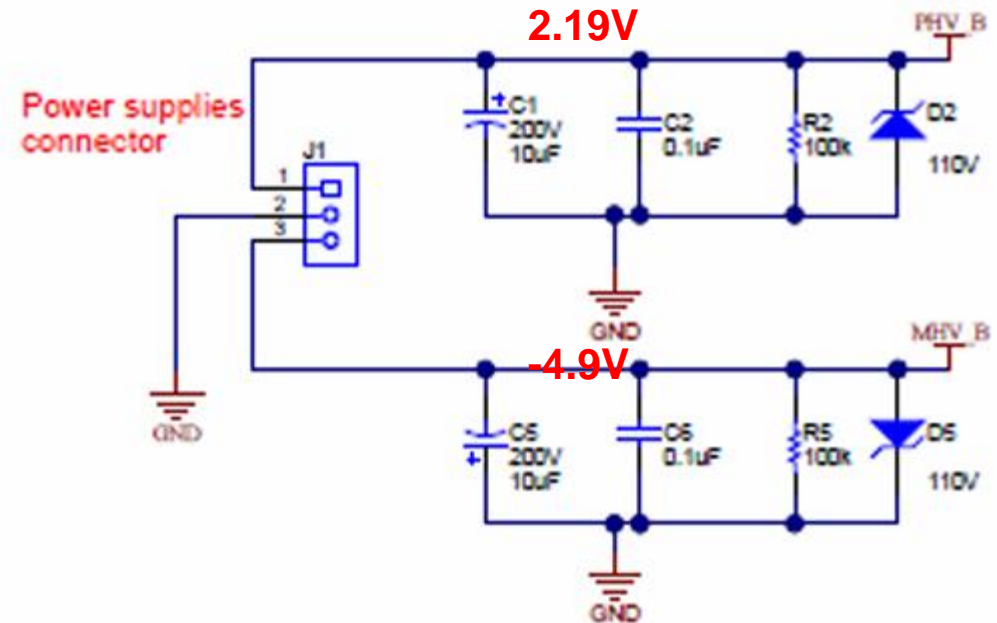
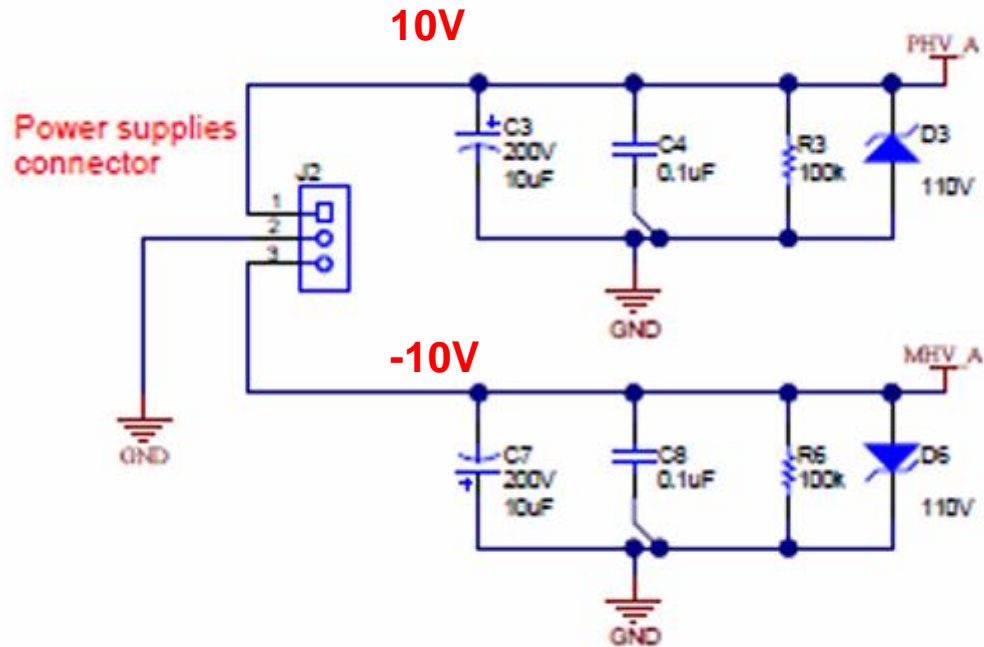
## ❖ Short Check(Power Connection O)



# Appendix

# Appendix

## ❖ HV Power



## ❖ HV Power

