

AM62x SKEVM

PAGE	CONTENTS
01	TABLE OF CONTENTS
02	REVISION HISTORY
03	PERIPHERAL POWER SUPPLY
04	PMIC
05	SOC POWER
06	SOC POWER CAPS
07	DDR4
08	WL1837 MODULE
09	eMMC FLASH
10	SD CARD INTERFACE
11	SOC OSPI I/F
12	ETHERNET PHY
13	LED DRIVER
14	BOOT MODE SETTING
15	JTAG 20 PIN cTI CONNECTOR
16	USB to UART
17	SOC WKUP DOMAIN
18	MCU HEADER
19	USB TYPE-A
20	CSI DOMAIN
21	IO EXPANDER
22	POWER USB0 TYPE-C
23	HDMI INTERFACE
24	SOC RESET

TABLE OF CONTENTS

Title			
3Egreen GW12			
Size	Document Number	Rev	
B	TABLE OF CONTENTS	EVT1	
Date:	Friday, October 21, 2022	Sheet	1 of 24

GPIO MAPPING TABLE

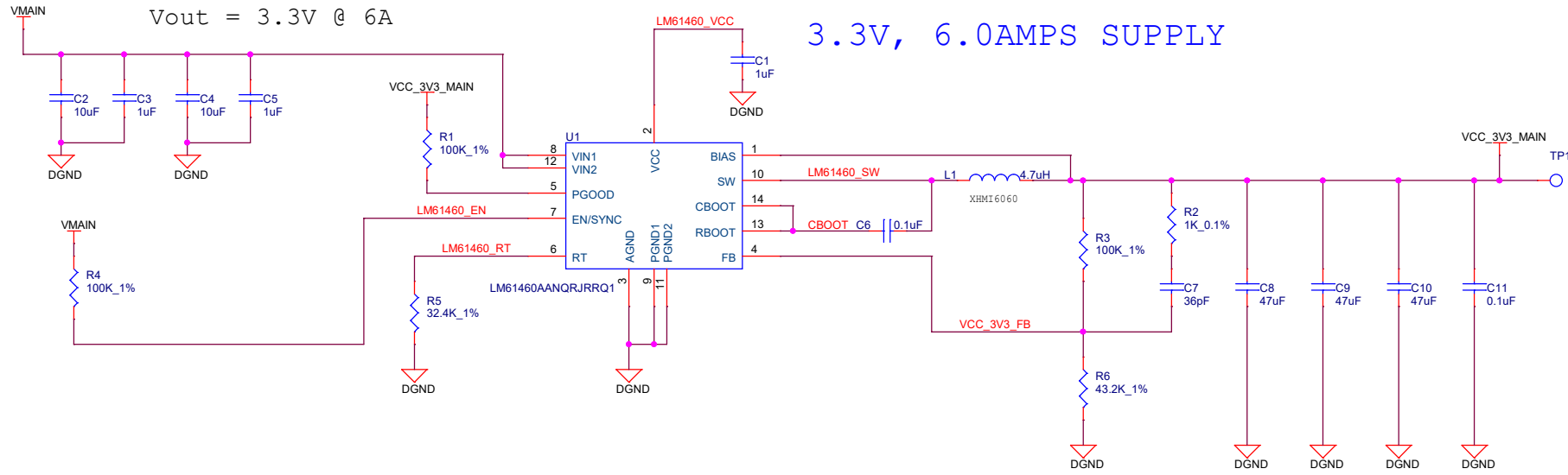
SL NO.	GPIO DESCRIPTION	GPIO NETNAME	FUNCTIONALITY	GPIO USED	SOC MUXED SIGNAL NAME	DIRECTION WITH RESPECT TO CONTROL	DEFAULT STATE	ACTIVE STATE	VOLTAGE DOMAIN ON SOC SIDE	VOLTAGE CONNECTED ON SKEVM
1	Enable for WLAN Interface	WLAN_EN	ENABLE	GPIO0_71	MMC2_SDCCD	OUTPUT	LOW	HIGH	VDDSHV6	SoC_DVDD1V8
2	WLAN Interrupt	WLAN_IRQ	INTERRUPT	GPIO0_72	MMC2_SDWP	INPUT	HIGH	LOW	VDDSHV6	SoC_DVDD1V8
3	Enable for BT Interface	BT_EN_SOC	ENABLE	MCU_GPIO0_1	MCU_SPI0_CS0	OUTPUT	LOW	HIGH	VDDSHV_MCU	SoC_DVDD3V3
4	CPSW Ethernet PHY Interrupt	CPSW_RGMII_INTn/PRU_INTn	INTERRUPT	GPIO1_31	EXTINTn	INPUT	HIGH	LOW	VDDSHV0	SoC_DVDD3V3
	PRU Connector Interrupt									
	PMIC_INTn									
5	OSPI Reset Control GPIO	GPIO_OSPI_RSTn	RESET	GPIO0_12	OSPI0_CSn1	OUTPUT	HIGH	LOW	VDDSHV1	SoC_DVDD1V8
6	OSPI Interrupt	OSPI_INTn	INTERRUPT	GPIO0_13	OSPI0_CSn2	INPUT	HIGH	LOW	VDDSHV1	SoC_DVDD1V8
7	SD Card IO Voltage Select	VSEL_SD	ENABLE	GPIO0_31	GPMC0_CLK	OUTPUT	LOW	HIGH	VDDSHV3	SoC_DVDD3V3
8	IO Expander Interrupt	GPIO1_23_INTn	INTERRUPT	SoC_GPIO1_23	UART0_RTSN	INPUT	HIGH	LOW	VDDSHV0	SoC_DVDD3V3
9	User Interrupt Push Button/ TEST GPIO1 from Test Automation Connector									
10	User Test LED 1	SOC_GPIO1_49	GPIO	GPIO1_49	MMC1_SDWP	OUTPUT	LOW	HIGH	VDDSHV0	SoC_DVDD3V3
IO EXPANDER - 01										
1	CPSW Ethernet PHY-2 Reset Control GPIO	GPIO_CPSW2_RST	RESET	IO EXPANDER - P00		OUTPUT	HIGH	LOW	VDDSHV0	SoC_DVDD3V3
2	CPSW Ethernet PHY-1 Reset Control GPIO	GPIO_CPSW1_RST	RESET	IO EXPANDER - P01		OUTPUT	HIGH	LOW	VDDSHV0	SoC_DVDD3V3
3	PRU Board Detection	PRU_DETECT	DETECTION	IO EXPANDER - P02		INPUT	HIGH	LOW	VDDSHV0	SoC_DVDD3V3
4	SD Card Load Switch Enable	MMC1_SD_EN	ENABLE	IO EXPANDER -P03		OUTPUT	HIGH	LOW	VDDSHV0	SoC_DVDD3V3
5	SOC eFuse Voltage(VPP=1.8V) Regulator Enable	VPP_LDO_EN	ENABLE	IO EXPANDER - P04		OUTPUT	LOW	HIGH	VDDSHV0	SoC_DVDD3V3
6	EXP CONN 3.3V Power Switch Enable	EXP_PS_3V3_EN	ENABLE	IO EXPANDER - P05		OUTPUT	LOW	HIGH	VDDSHV0	SoC_DVDD3V3
7	EXP CONN 5V Power Switch Enable	EXP_PS_5V0_EN	ENABLE	IO EXPANDER - P06		OUTPUT	LOW	HIGH	VDDSHV0	SoC_DVDD3V3
8	EXP CONN HAT Board Detection	EXP_HAT_DETECT	DETECTION	IO EXPANDER - P07		INPUT	HIGH	LOW	VDDSHV0	SoC_DVDD3V3
9	Audio Codec Reset Control GPIO	GPIO_AUD_RSTn	DETECTION	IO EXPANDER - P10		INPUT	HIGH	LOW	VDDSHV0	SoC_DVDD3V3
10	eMMC Reset control GPIO	GPIO_eMMC_RSTn	RESET	IO EXPANDER - P11		OUTPUT	HIGH	LOW	VDDSHV0	SoC_DVDD3V3
11	UART1 FET Switch and Buffer Enable signal	UART1_FET_BUF_EN	ENABLE	IO EXPANDER - P12		OUTPUT	HIGH	LOW	VDDSHV0	SoC_DVDD3V3
12	Enable for Wilink Level Translators	WL_LT_EN	ENABLE	IO EXPANDER - P13		OUTPUT	LOW	HIGH	VDDSHV0	SoC_DVDD3V3
13	HDMI Transmitter Reset Control GPIO	GPIO_HDMI_RSTn	RESET	IO EXPANDER - P14		OUTPUT	HIGH	LOW	VDDSHV0	SoC_DVDD3V3
14	Raspberry Pi Camera CSIO GPIO1	CSI_GPIO1	INPUT/OUTPUT	IO EXPANDER - P15		NA	NA	NA	VDDSHV0	SoC_DVDD3V3
15	Raspberry Pi Camera CSIO GPIO2	CSI_GPIO2	INPUT/OUTPUT	IO EXPANDER - P16		NA	NA	NA	VDDSHV0	SoC_DVDD3V3
16	PRU Power Switch Enable	PRU_3V3_EN	ENABLE	IO EXPANDER - P17		OUTPUT	LOW	HIGH	VDDSHV0	SoC_DVDD3V3
17	HDMI Interrupt	HDMI_INTn	INTERRUPT	IO EXPANDER - P20		INPUT	HIGH	LOW	VDDSHV0	SoC_DVDD3V3
18	PD Controller Interrupt	PD_I2C_IRQ	INTERRUPT	IO EXPANDER - P21		INPUT	HIGH	LOW	VDDSHV0	SoC_DVDD3V3
19	MCASP1 FET Switch Enable	MCASP1_FET_EN	ENABLE	IO EXPANDER - P22		OUTPUT	LOW	HIGH	VDDSHV0	SoC_DVDD3V3
20	MCASP1 Level Translator buffer for BT Enable	MCASP1_BUF_BT_EN	ENABLE	IO EXPANDER - P23		OUTPUT	LOW	HIGH	VDDSHV0	SoC_DVDD3V3
21	MCASP1 FET Switch select pin status	MCASP1_FET_SEL	GPIO	IO EXPANDER - P24		INPUT	LOW	HIGH	VDDSHV0	SoC_DVDD3V3
22	SOC UART1 FET Switch Select	UART1_FET_SEL	SELECT	IO EXPANDER - P25		OUTPUT	LOW	HIGH	VDDSHV0	SoC_DVDD3V3
23	OLDI Display Touch Interrupt	TS_INT#	INTERRUPT	IO EXPANDER - P26		INPUT	HIGH	LOW	VDDSHV0	SoC_DVDD3V3
24	User Test LED 2	IO_EXP_TEST_LED	GPIO	IO EXPANDER - P27		OUTPUT	LOW	HIGH	VDDSHV0	SoC_DVDD3V3

Title		3Egreen GW12	
Size	Document Number	REVISION HISTORY	
C		Date:	Friday, October 21, 2022
		Sheet	2 of 24

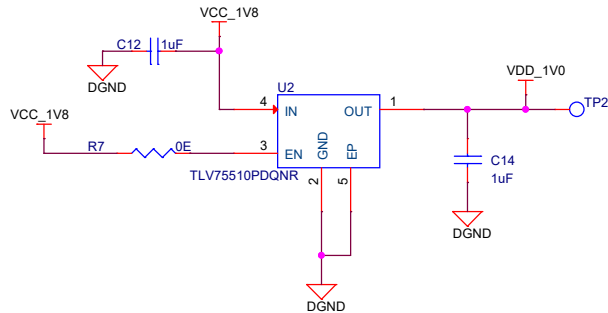
PERIPHERAL POWER SUPPLY

VinMin = 4.5V
 VinMax = 24V
 Vout = 3.3V @ 6A

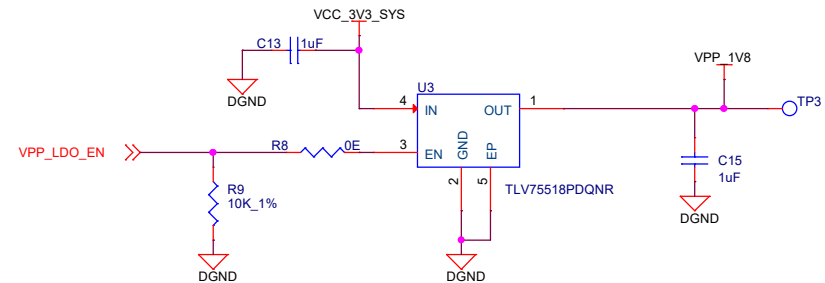
3.3V, 6.0AMPS SUPPLY



1.0V, 0.5AMPS SUPPLY (ETHERNET)



1.8V VPP, 0.5AMPS SUPPLY

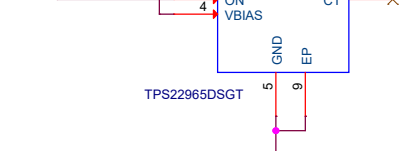
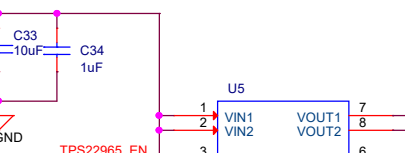
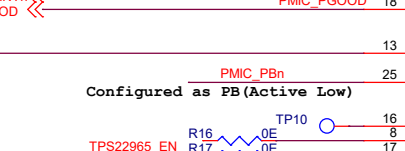
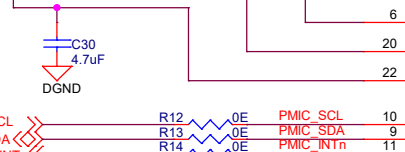
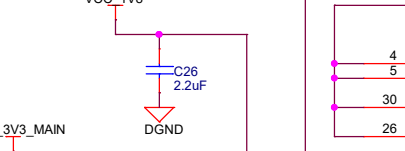
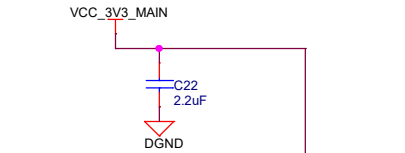
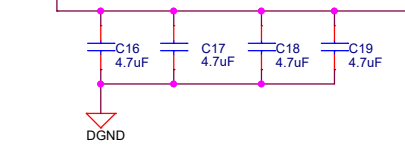


Title		
3Egreen GW12		
Size	Document Number	Rev
B	PERIPHERAL POWER SUPPLY	EVT1
Date:	Friday, October 21, 2022	Sheet 3 of 24

PMIC REGULATORS	VOLTAGE RAIL	CURRENT (mA)
BUCK 1	VCC_CORE (0.75V)	2700
BUCK 2	VCC_1V8	995
BUCK 3	VDD_1V2	936
LDO 1	VDDSHV_SDIO	50
LDO 2	VDDR_CORE	150
LDO 3	VDDA_1V8	200
LDO 4	VDD_2V5	300

FULTON PMIC

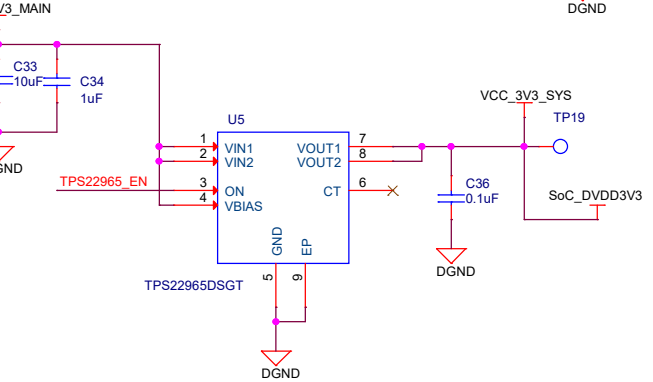
Input Caps for pin 4,5,26,30



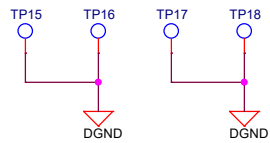
Configured as PB (Active Low)

I2C ADDRESS: 0x30

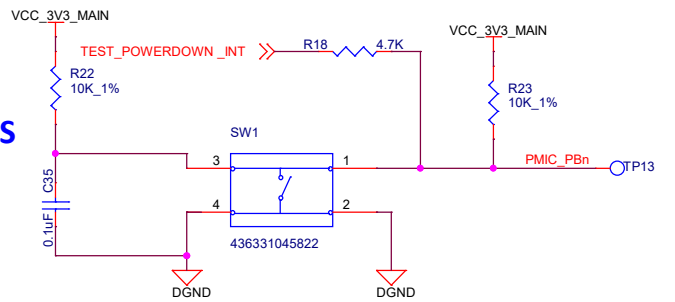
3V3 POWER SWITCH



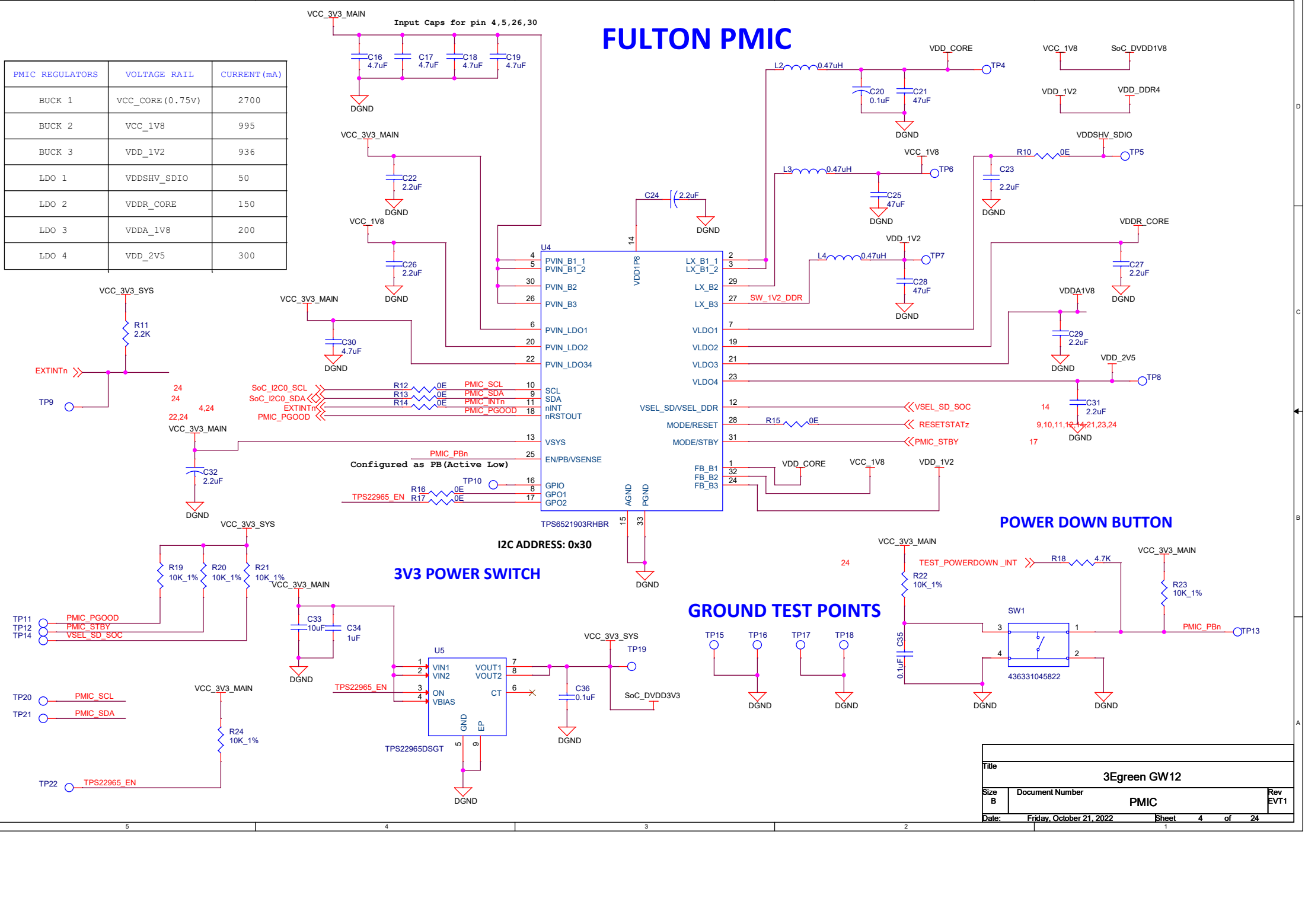
GROUND TEST POINTS



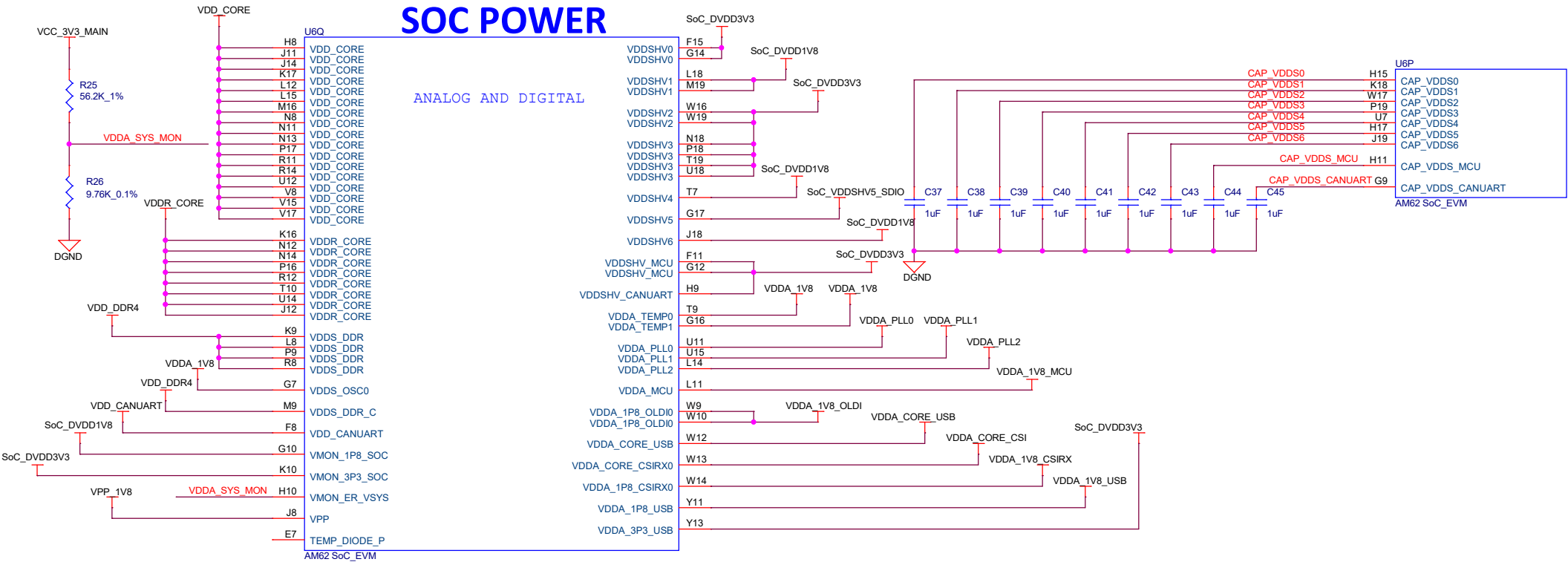
POWER DOWN BUTTON



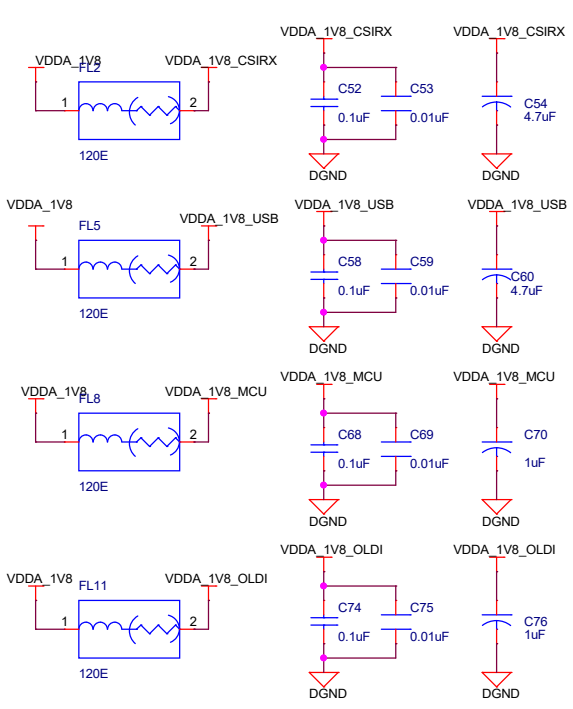
Title		3Egreen GW12	
Size	Document Number	PMIC	Rev
B			EVT1
Date:	Friday, October 21, 2022	Sheet	4 of 24



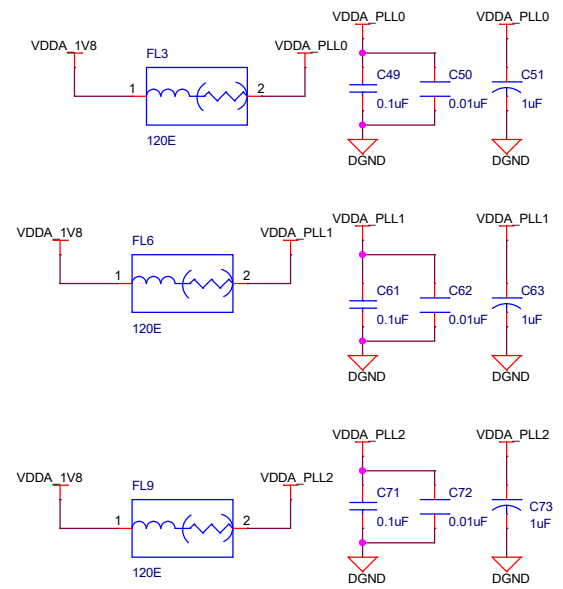
SOC POWER



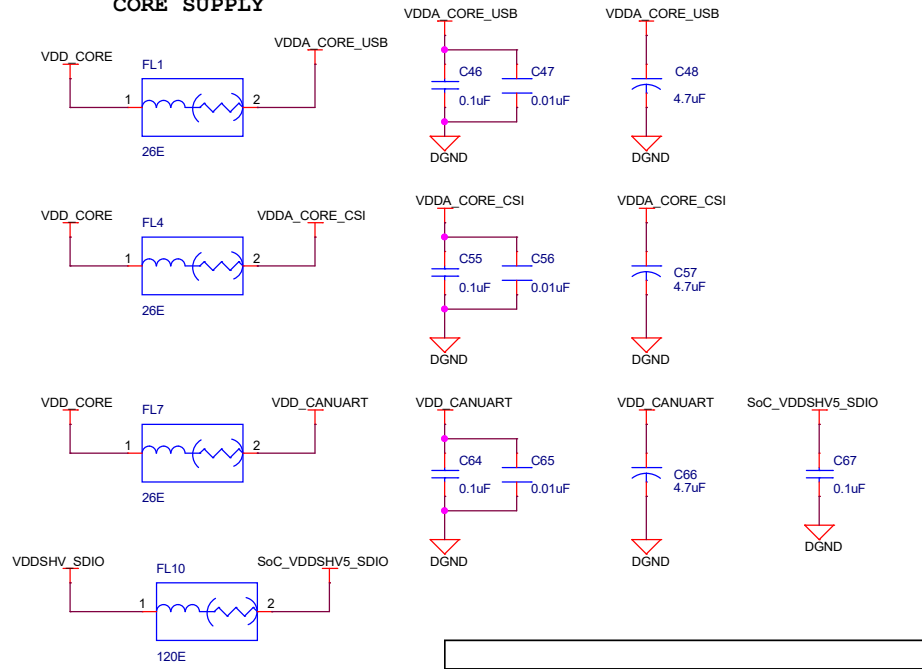
1.8V Analog SUPPLY



3.3V/1.8V MMC1 SUPPLY

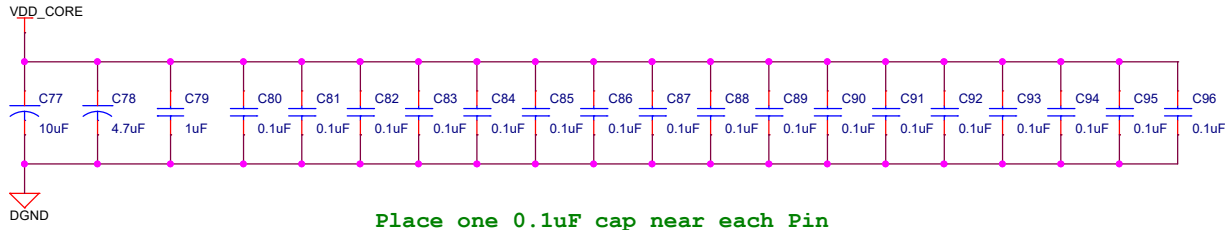


CORE SUPPLY

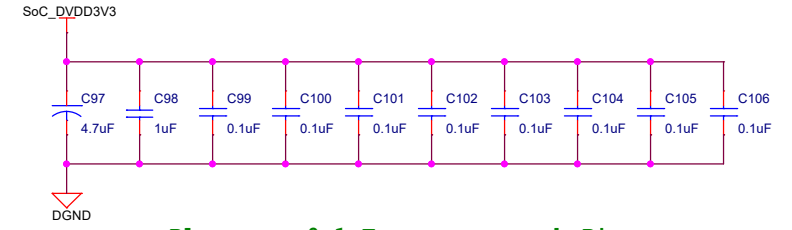


Title			3Egreen GW12		
Size	Document Number		Rev		
Custom	SOC POWER		EVT1		
Date:	Friday, October 21, 2022	Sheet	5	of	24

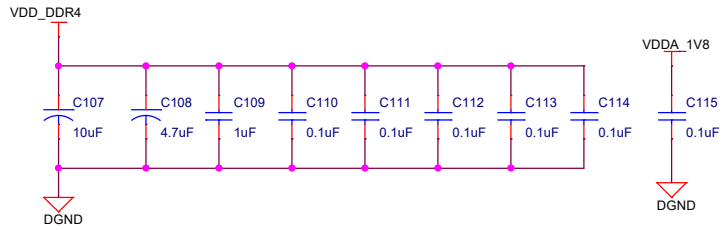
SOC POWER DECAPS



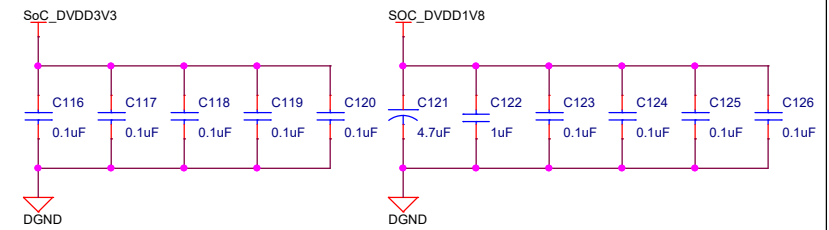
Place one 0.1uF cap near each Pin



Place one 0.1uF cap near each Pin

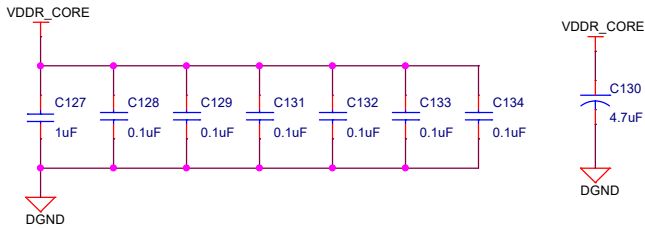
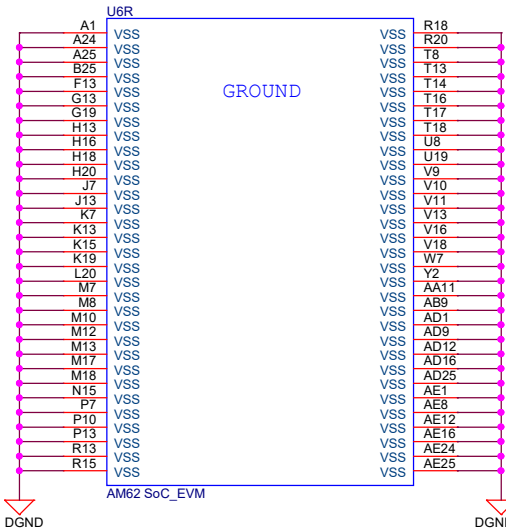


Place one 0.1uF cap near each Pin



Place one 0.1uF cap near each Pin

SOC VSS

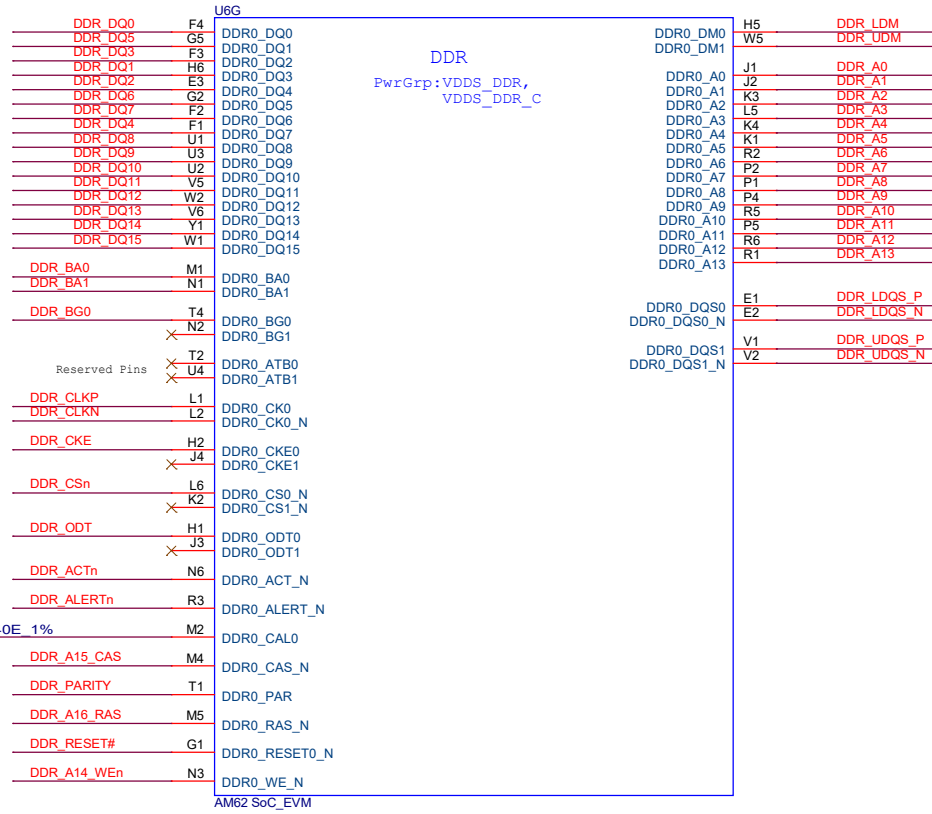


Place one 0.1uF cap near each Pin

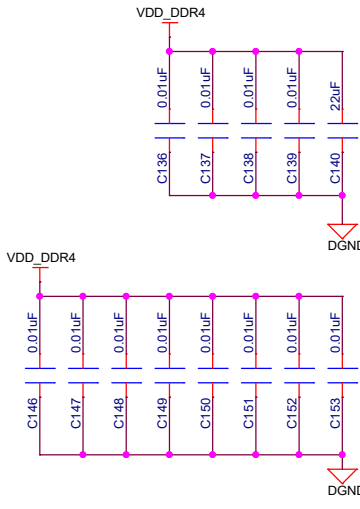
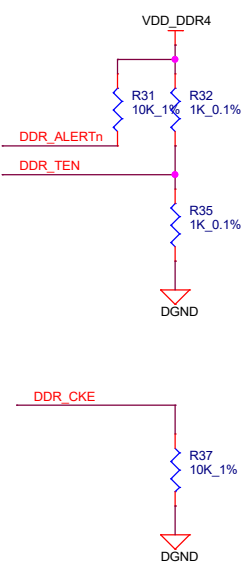
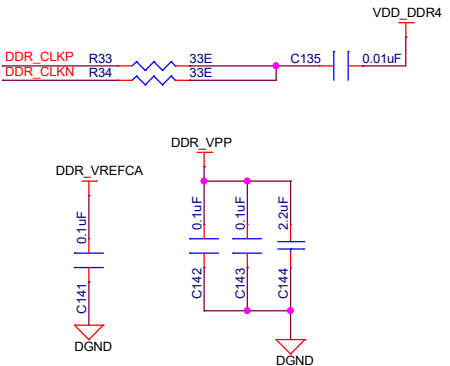
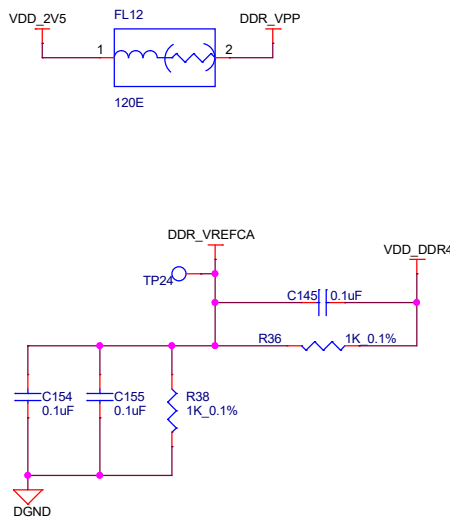
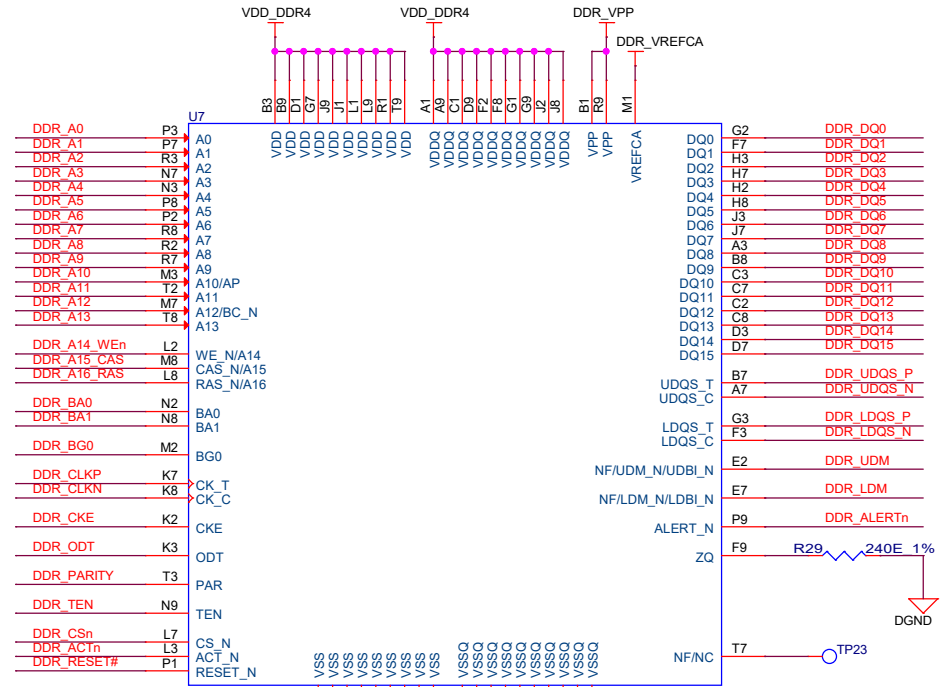
Title		
3Egreen GW12		
Size	Document Number	Rev
B	SOC POWER DECAPS	EVT1
Date:	Friday, October 21, 2022	Sheet 6 of 24

SOC DDR INTERFACE

NOTE: DDR DQ Lines Swapped
Within Data Byte

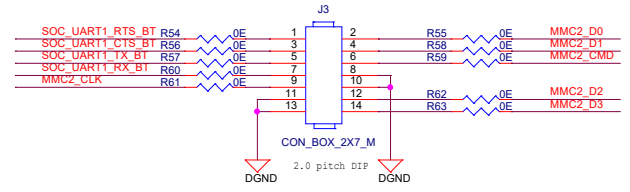
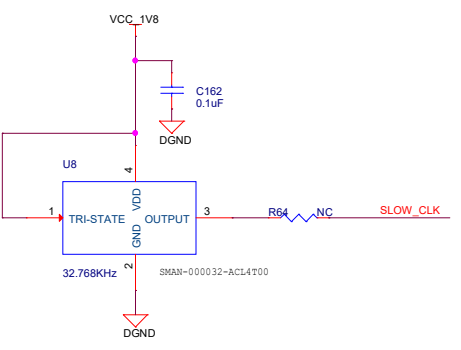
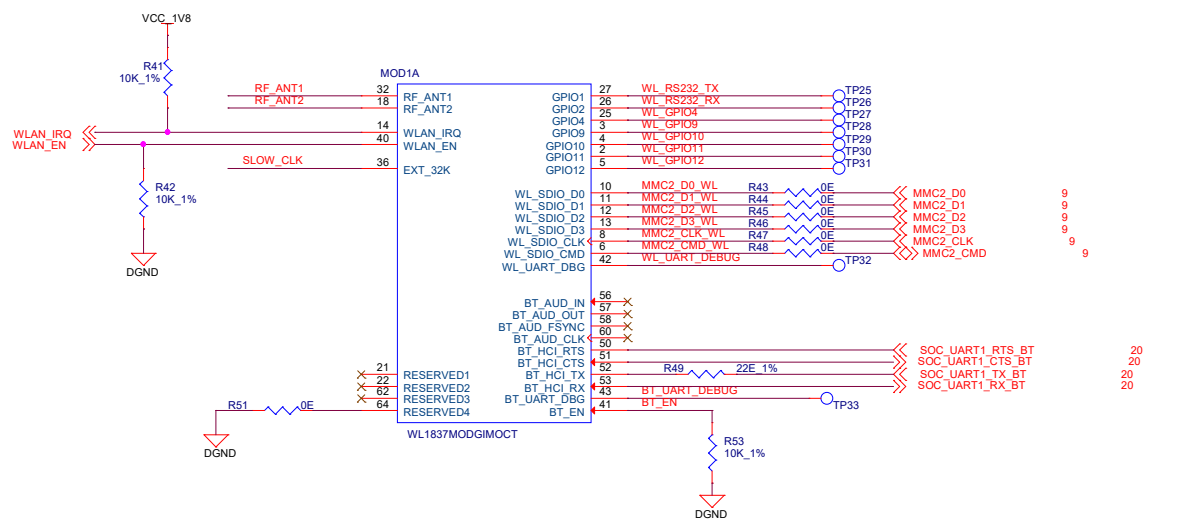
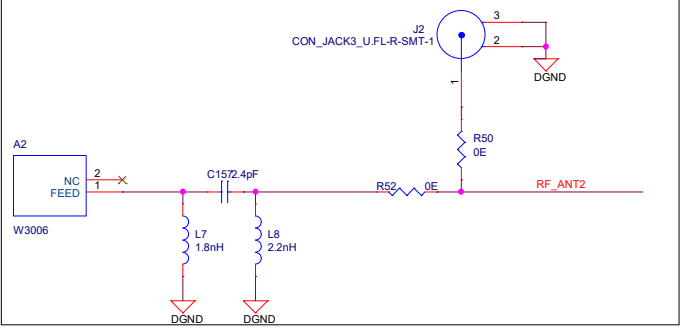
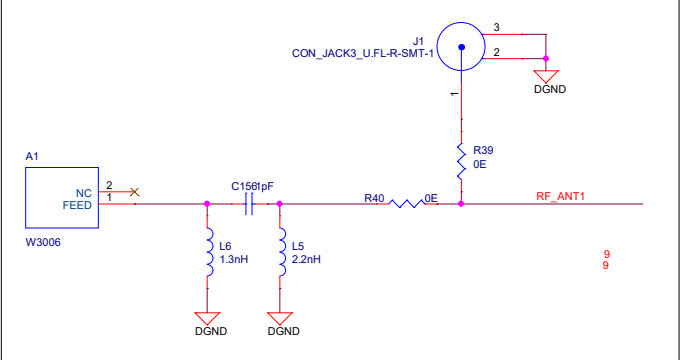


DDR4 DEVICE

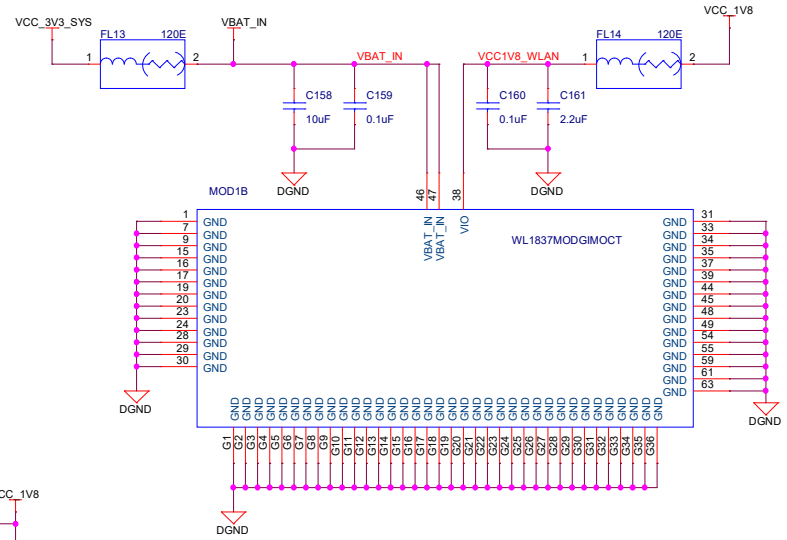


Title			3Egreen GW12		
Size	Document Number		Sheet		Rev
Custom	DDR4		7 of 24		EVT1
Date:	Friday, October 21, 2022				

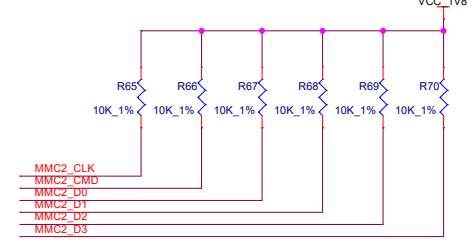
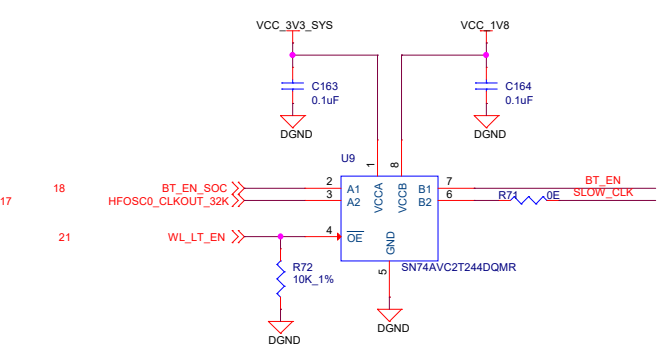
WL1837 MODULE



Place Series resistors for MMC2 signals as Tripad to avoid stub.

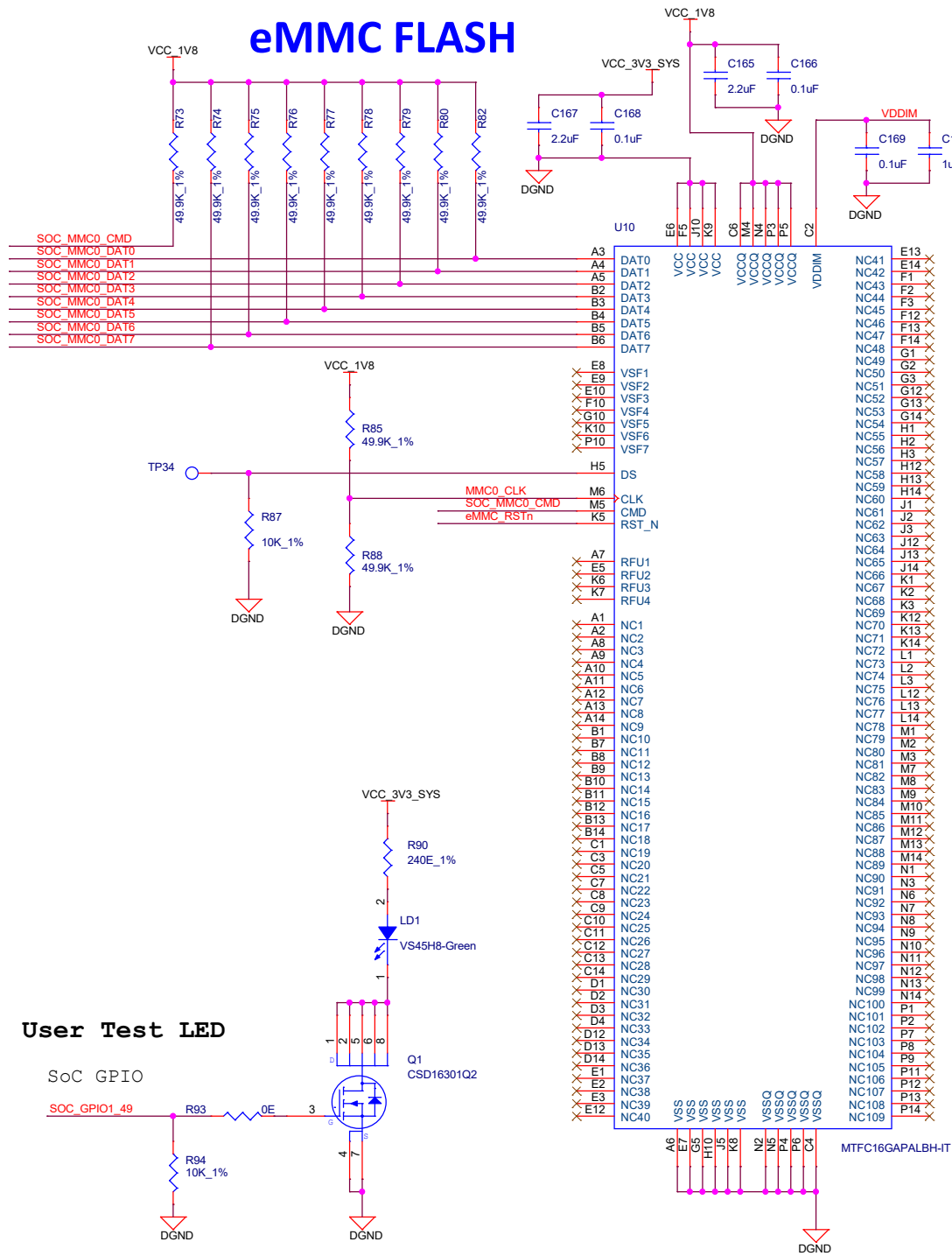


WILINK LEVEL TRANSLATOR

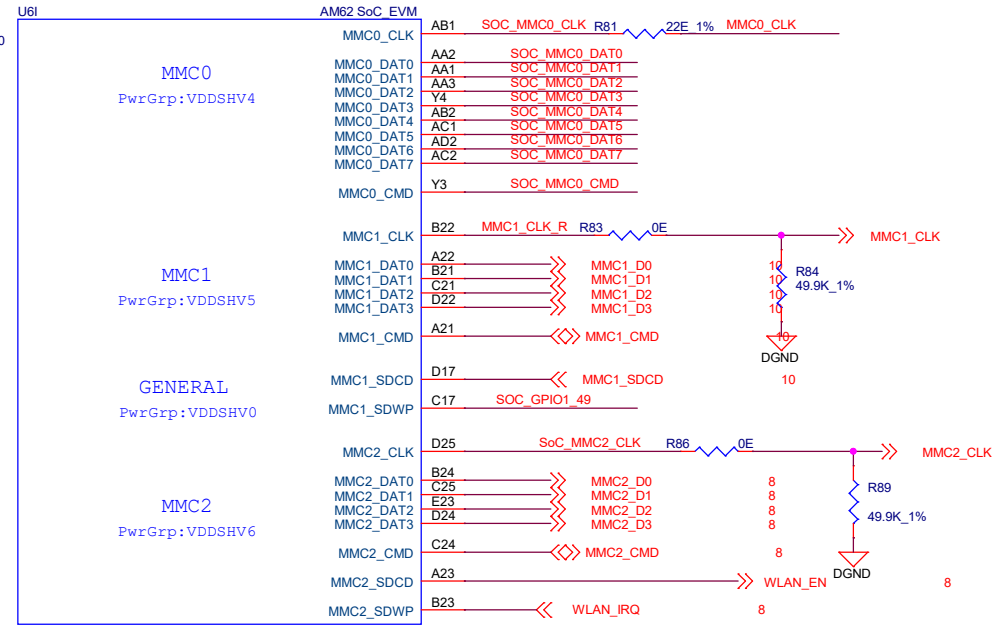


Title			3Egreen GW12		
Size	Document Number				Rev
Custom	WL1837 MODULE				EVT1
Date:	Friday, October 21, 2022	Sheet	8	of	24

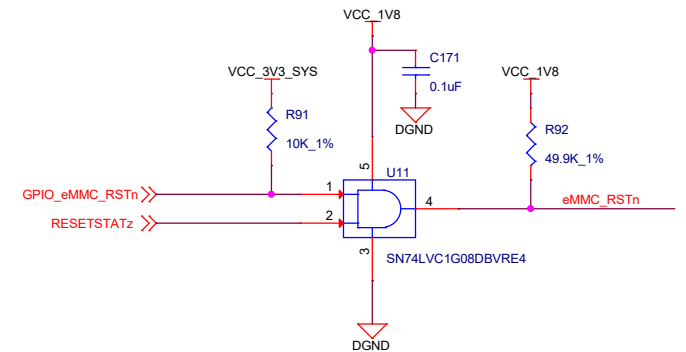
eMMC FLASH



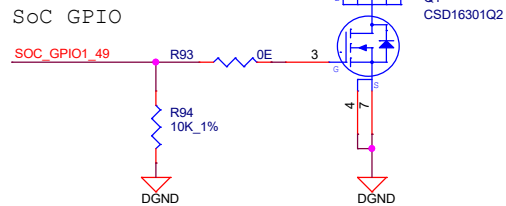
SOC - MMC Interface



eMMC FLASH RESET



User Test LED

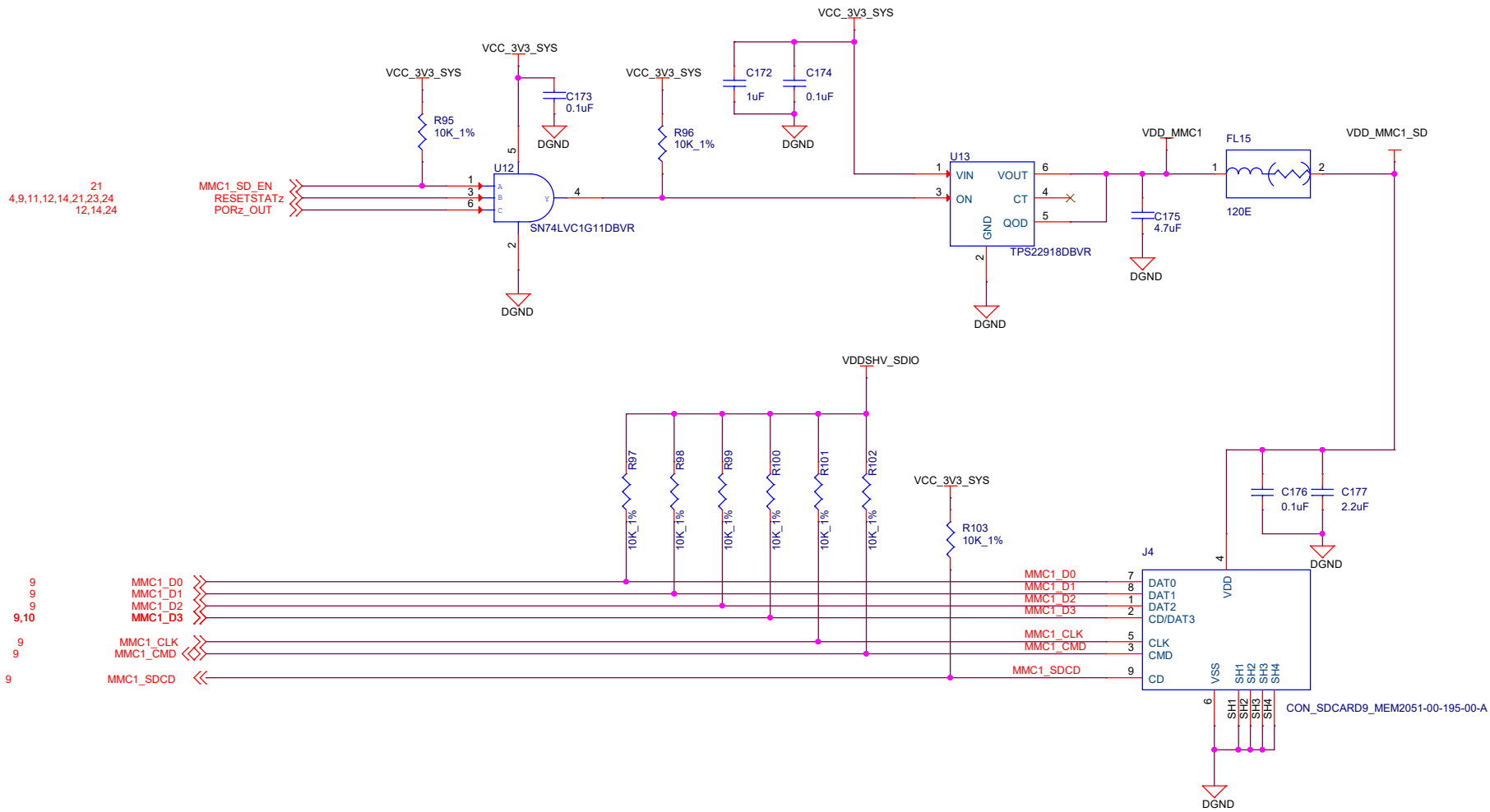


Title		
3Egreen GW12		
Size	Document Number	Rev
Custom	eMMC FLASH	EVT1
Date:	Friday, October 21, 2022	Sheet 9 of 24

SD CARD INTERFACE

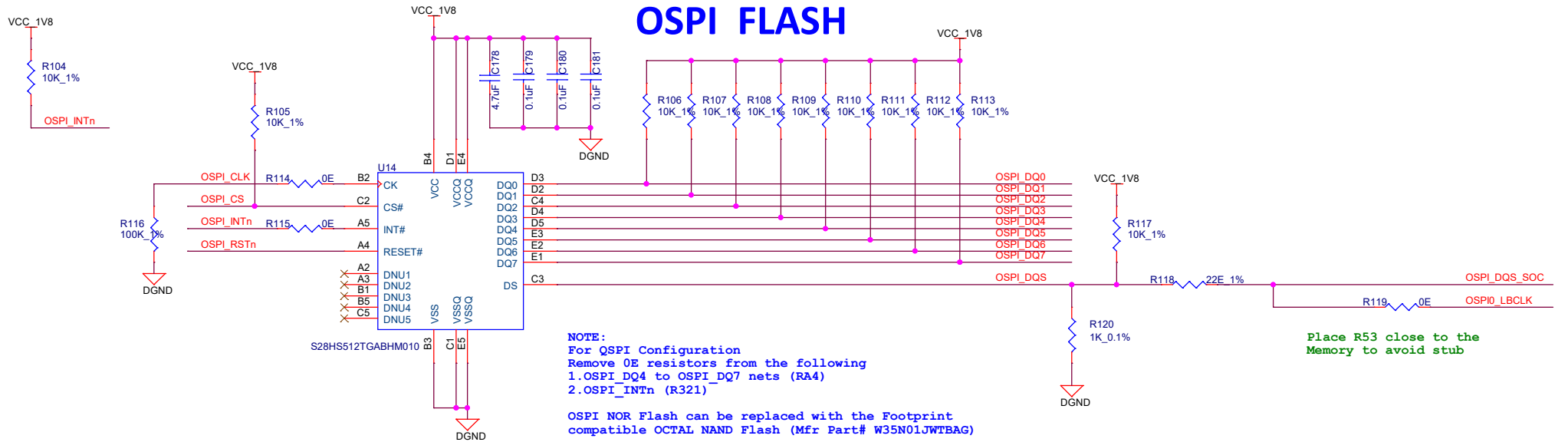
SD CARD RESET

LOAD SWITCH

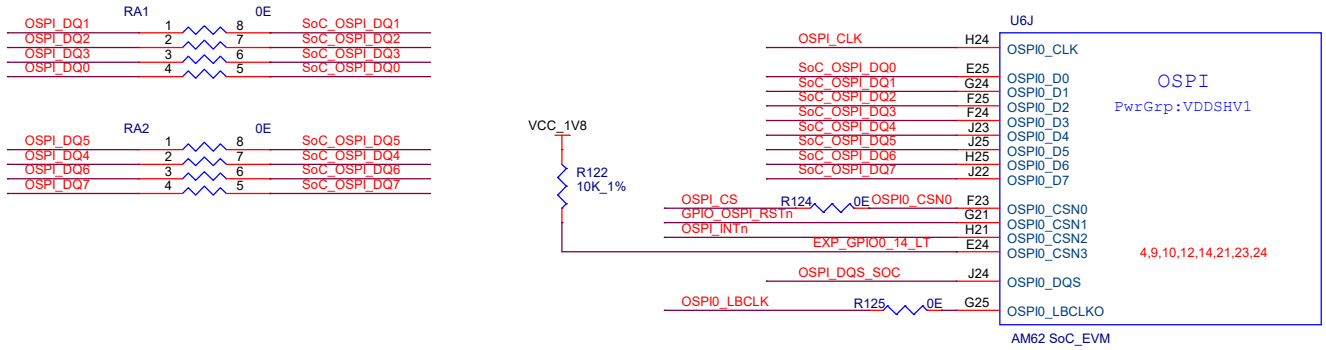


Title			3Egreen GW12		
Size	Document Number				Rev
B	SD CARD INTERFACE				EVT1
Date:	Friday, October 21, 2022	Sheet	10	of	24

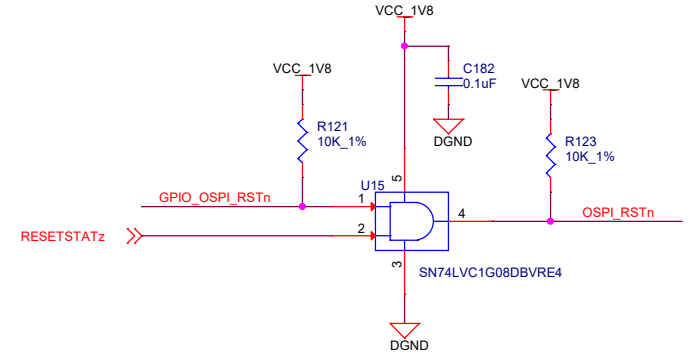
OSPI FLASH



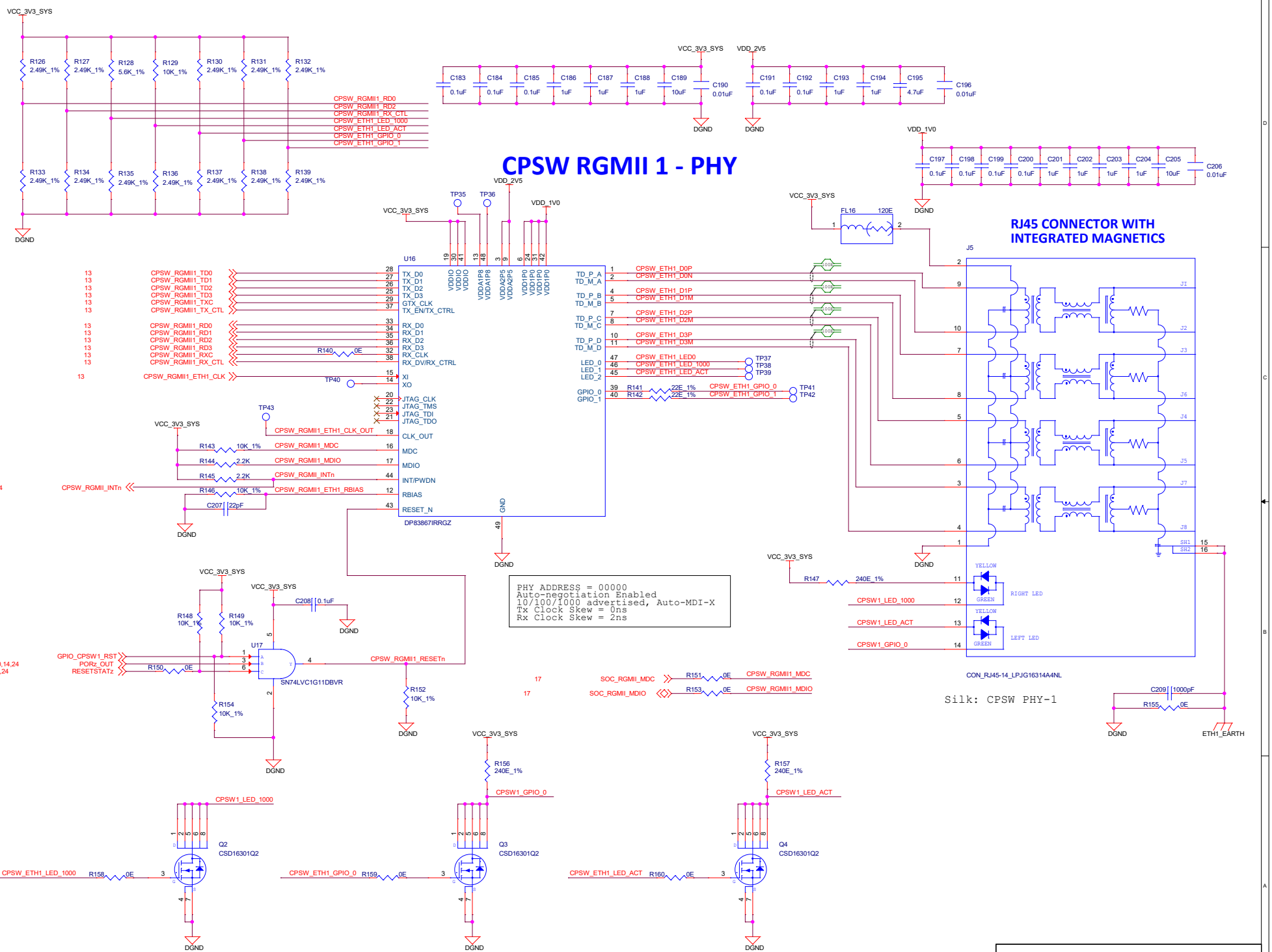
SOC OSPI INTERFACE



OSPI FLASH RESET



Title		
3Egreen GW12		
Size B	Document Number	Rev EVT1
SOC OSPI INTERFACE		
Date:	Friday, October 21, 2022	Sheet 11 of 24

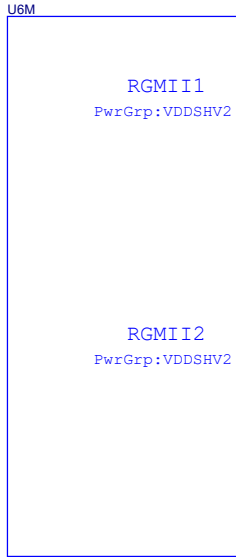


Title		3Egreen GW12	
Size	Document Number	ETHERNET PHY	
Custom			Rev EV11
Date:	Friday, October 21, 2022	Sheet	12 of 24

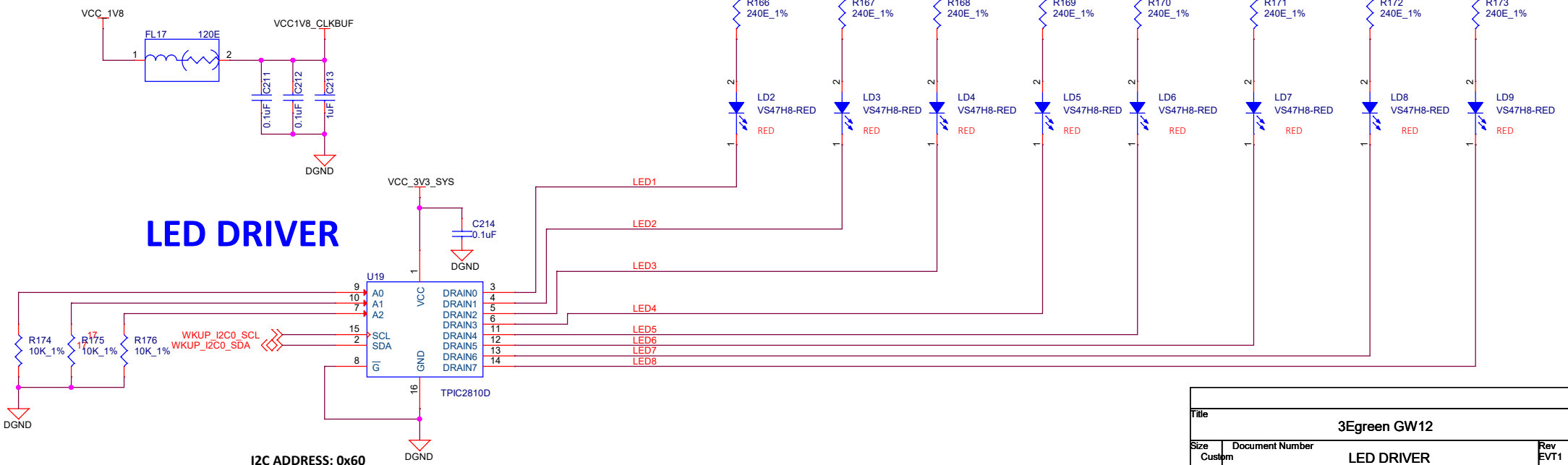
ETHERNET PHY CLOCK BUFFER

AM62 SoC_EVM

RGMI1_RD0	AB17	>>>	CPSW_RGMI1_RD0	12
RGMI1_RD1	AC17	>>>	CPSW_RGMI1_RD1	12
RGMI1_RD2	AB16	>>>	CPSW_RGMI1_RD2	12
RGMI1_RD3	AA15	>>>	CPSW_RGMI1_RD3	12
RGMI1_RXC	AD17	<<<	CPSW_RGMI1_RXC	12
RGMI1_RX_CTL	AE17	<<<	CPSW_RGMI1_RX_CTL	12
RGMI1_TD0	AE20	>>>	CPSW_RGMI1_TD0	12
RGMI1_TD1	AD20	>>>	CPSW_RGMI1_TD1	12
RGMI1_TD2	AE18	>>>	CPSW_RGMI1_TD2	12
RGMI1_TD3	AD18	>>>	CPSW_RGMI1_TD3	12
RGMI1_TXC	AE19	>>>	CPSW_RGMI1_TXC	12
RGMI1_TX_CTL	AD19	>>>	CPSW_RGMI1_TX_CTL	12
RGMI2_RD0	AE23	>>>		
RGMI2_RD1	AB20	>>>		
RGMI2_RD2	AC21	>>>		
RGMI2_RD3	AE22	>>>		
RGMI2_RXC	AD23	>>>		
RGMI2_RX_CTL	AD22	>>>		
RGMI2_TD0	Y18	>>>		
RGMI2_TD1	AA18	>>>		
RGMI2_TD2	AD21	>>>		
RGMI2_TD3	AC20	>>>		
RGMI2_TXC	AE21	>>>		
RGMI2_TX_CTL	AA19	>>>		



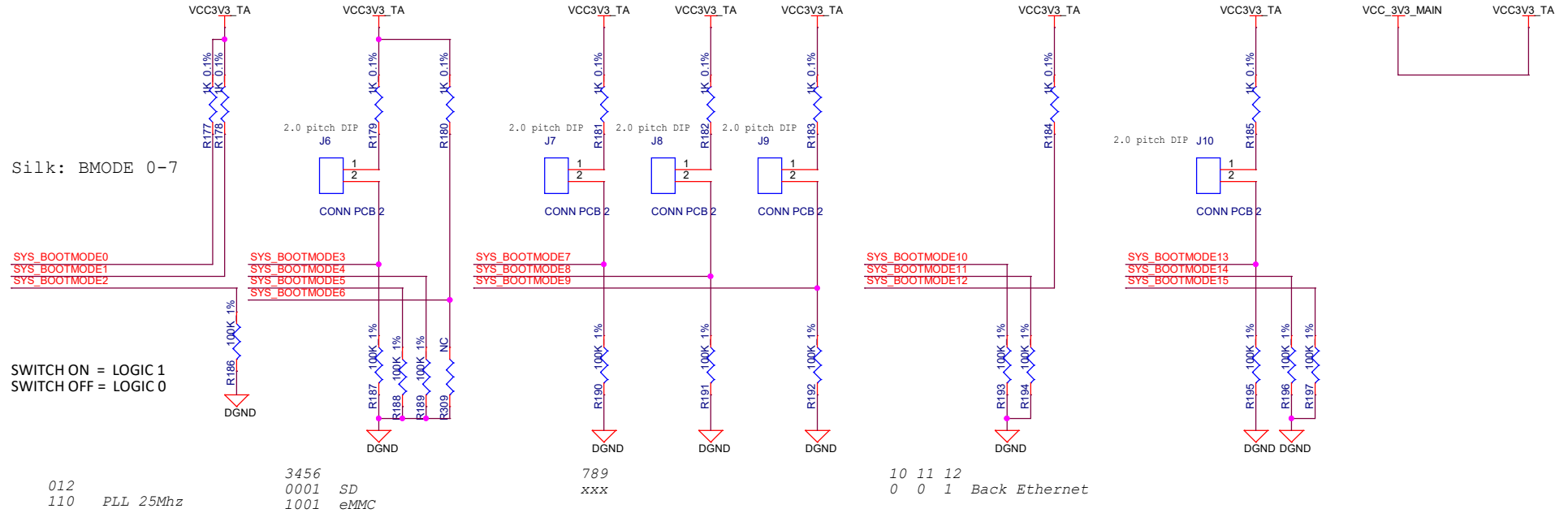
LED DRIVER



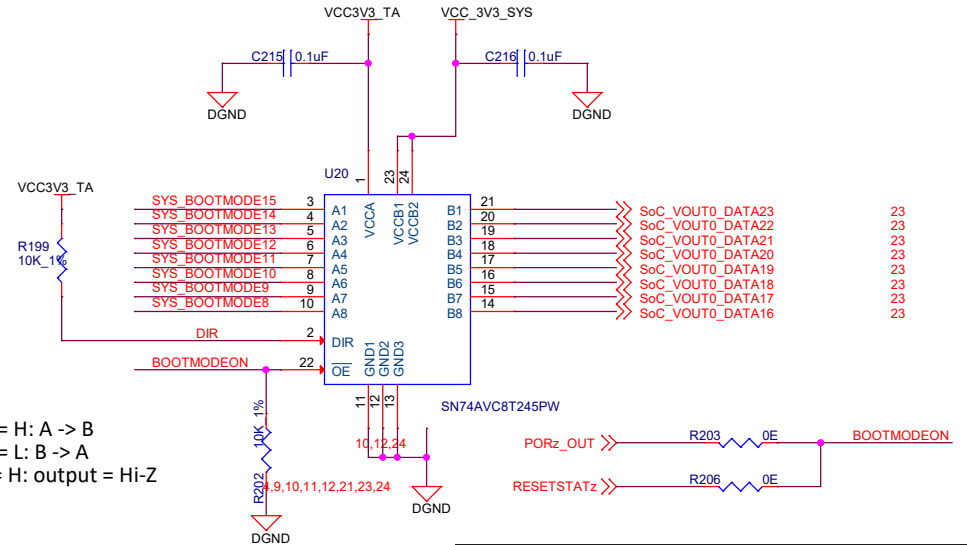
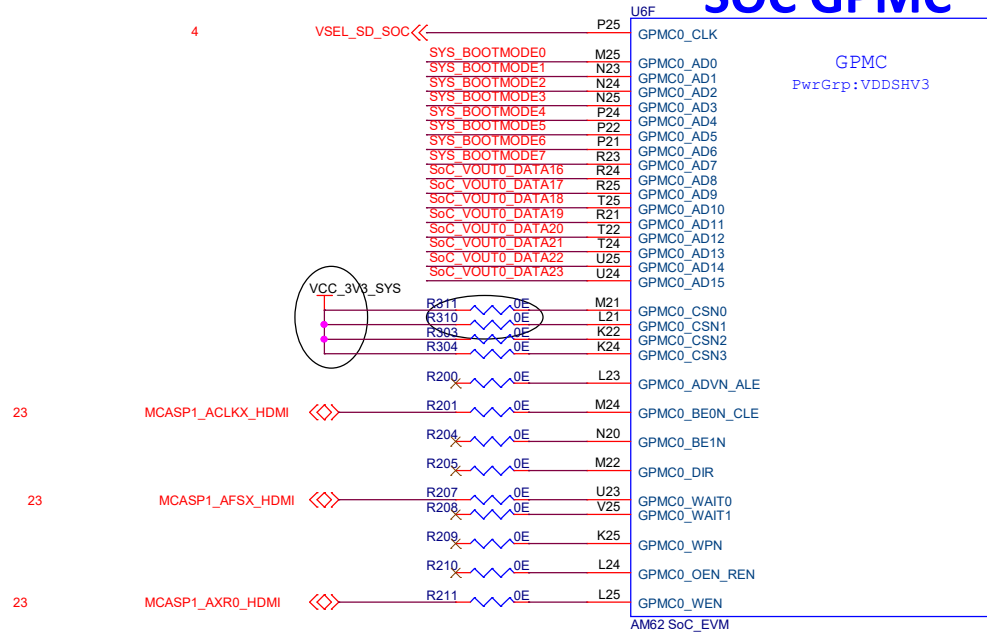
I2C ADDRESS: 0x60

Title		
3Egreen GW12		
Size	Document Number	Rev
Custom	LED DRIVER	EVT1
Date:	Friday, October 21, 2022	Sheet 13 of 24

BOOT MODE Setting

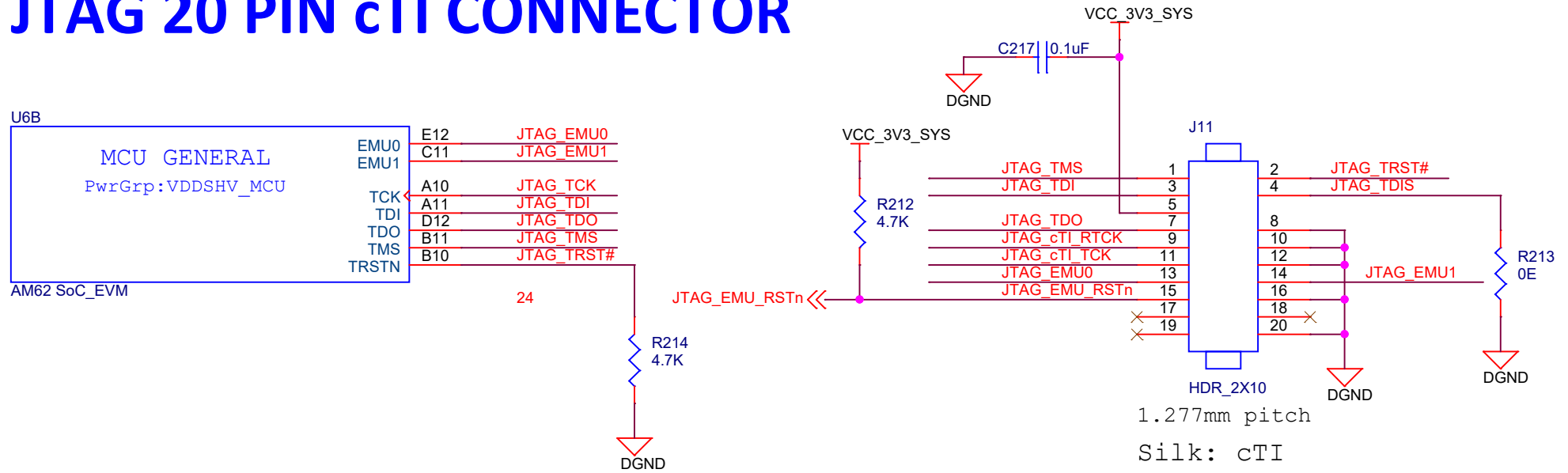


SOC GPMC

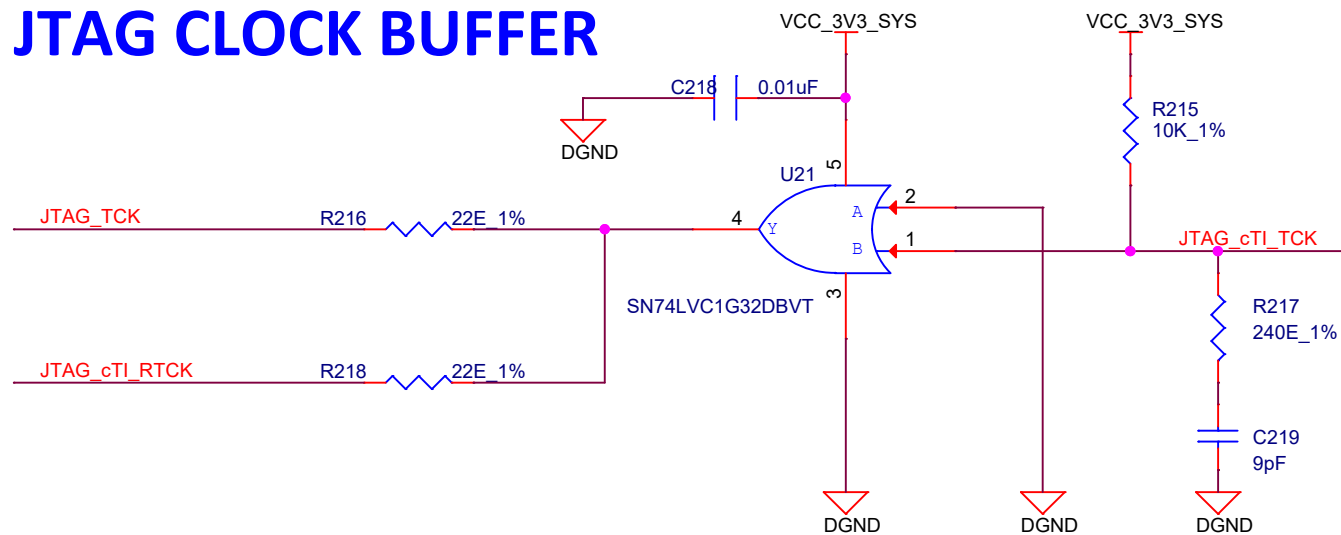


Title		
3Egreen GW12		
Size	Document Number	Rev
B	BOOT MODE SETTING	EVT1
Date:	Friday, October 21, 2022	Sheet 14 of 24

JTAG 20 PIN cTI CONNECTOR

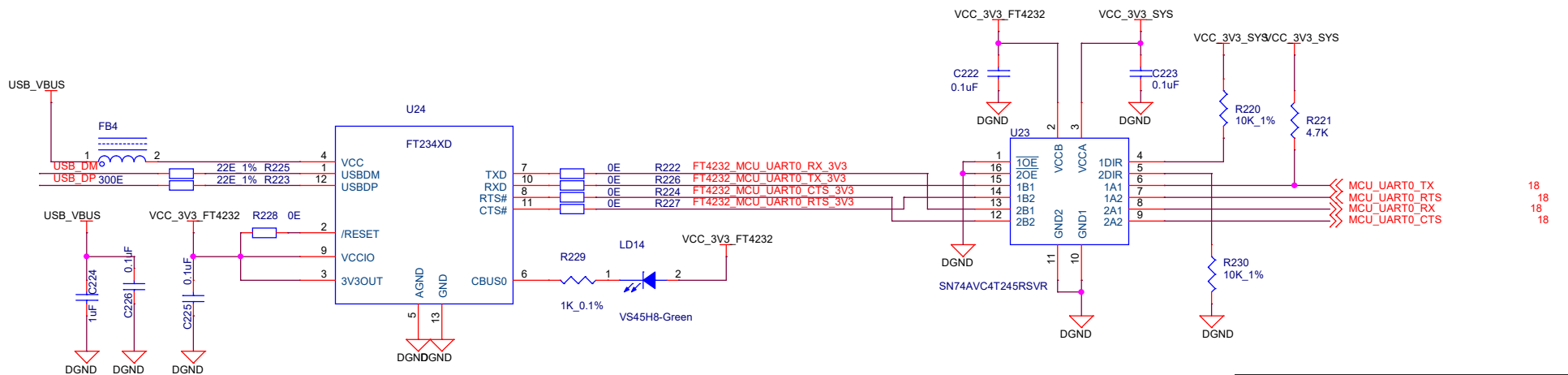
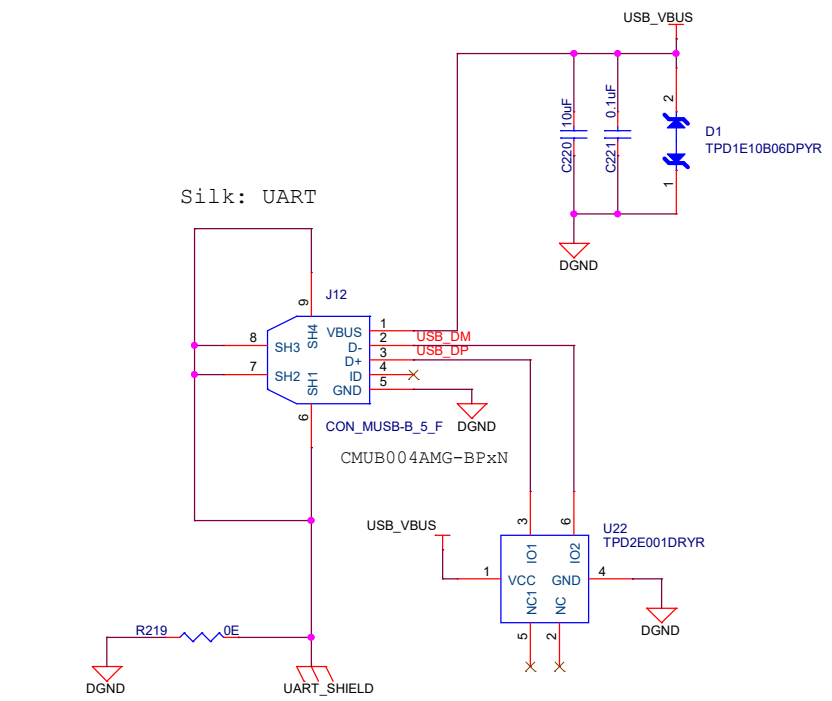


JTAG CLOCK BUFFER



Title		
3Egreen GW12		
Size A	Document Number	Rev
	JTAG 20 PIN cTI CONNECTOR	EVT1
Date:	Friday, October 21, 2022	Sheet 15 of 24

Silk: UART



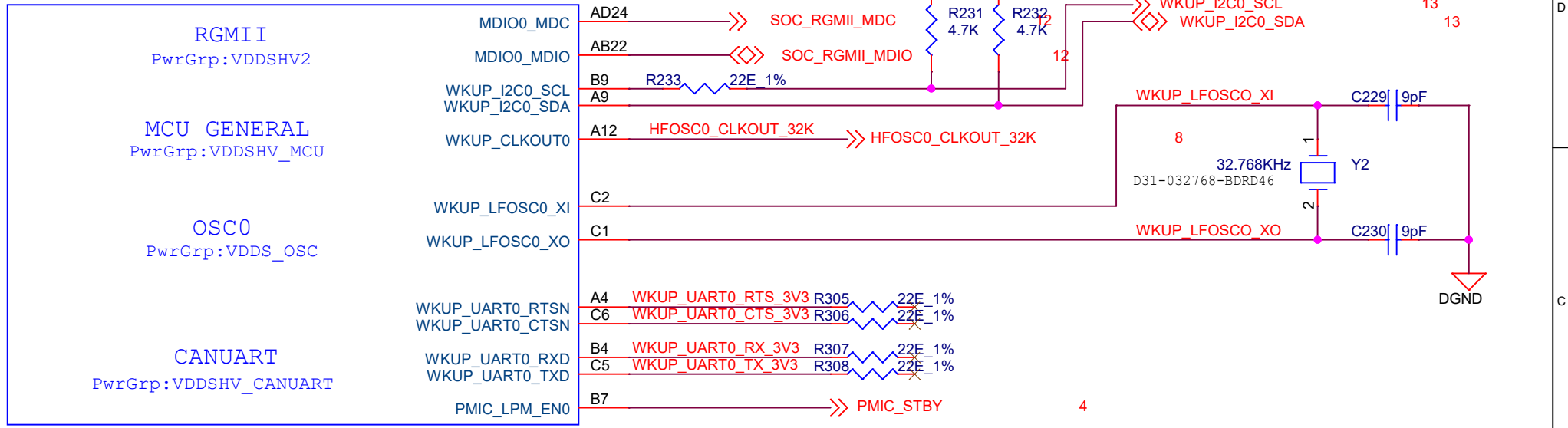
18
18
18
18

Title		
3Egreen GW12		
Size	Document Number	Rev
B	USB to UART	EVT1
Date:	Friday, October 21, 2022	Sheet 16 of 24

SOC WKUP DOMAIN

U60

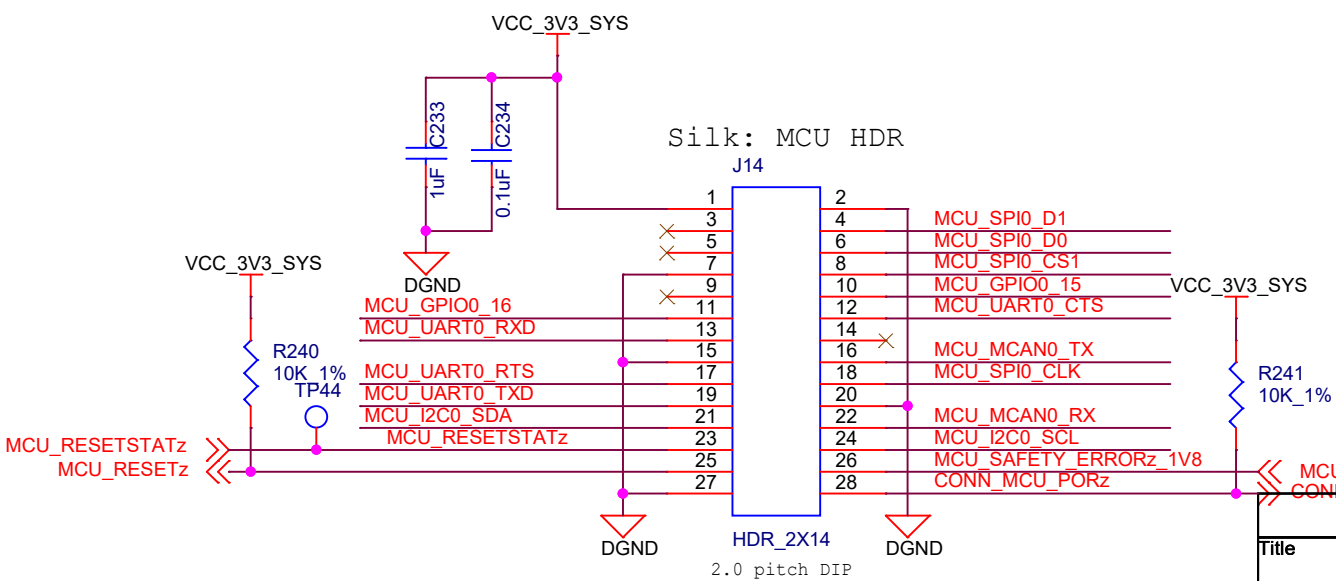
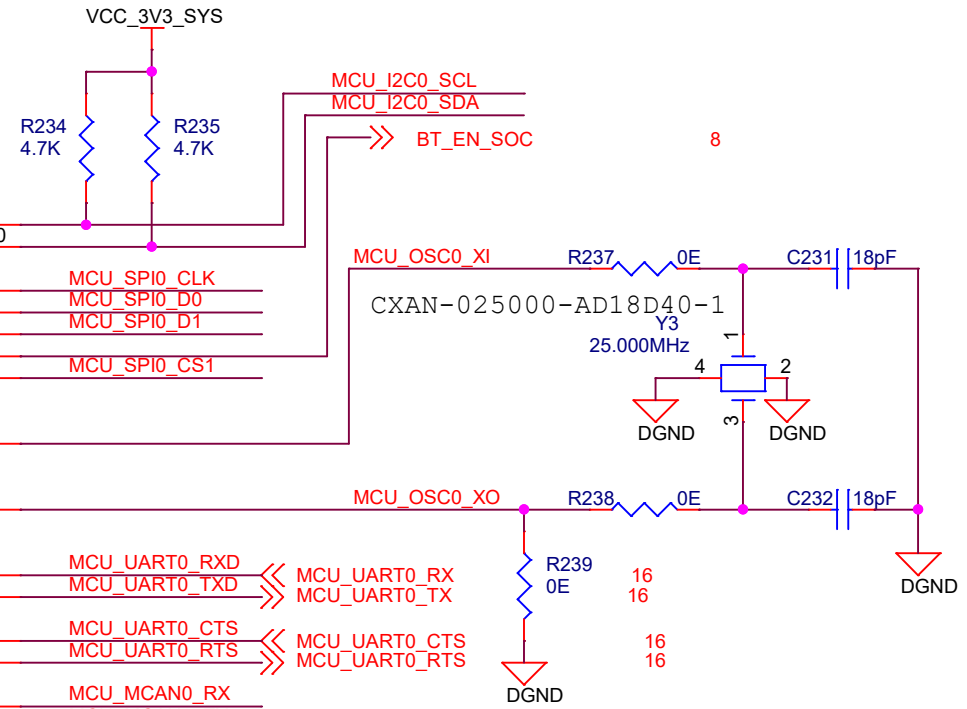
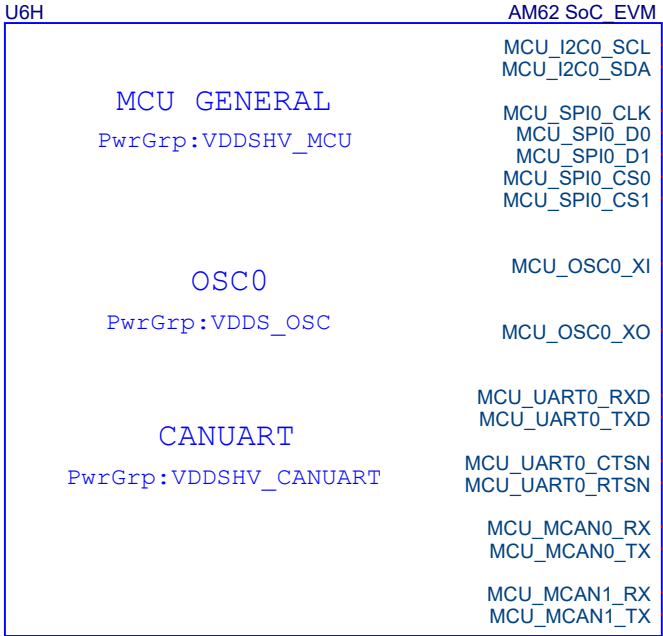
AM62 SoC_EVM



Silk: cTI

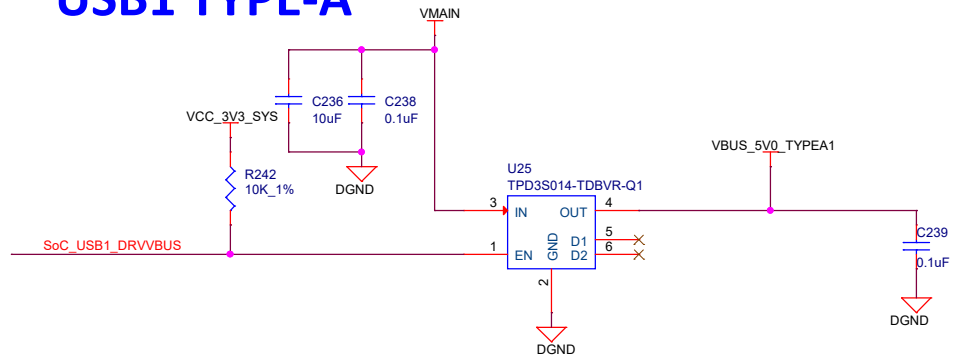
Title		
3Egreen GW12		
Size A	Document Number	Rev
	SOC WKUP DOMAIN	EVT1
Date:	Friday, October 21, 2022	Sheet 17 of 24

SOC - MCU DOMAIN

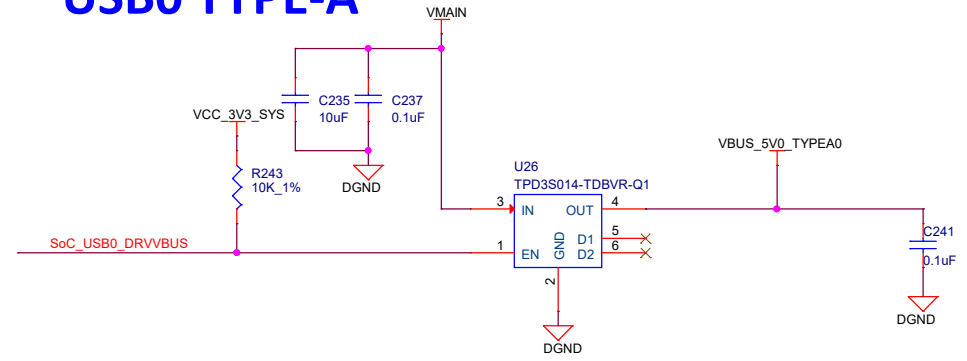


Title			3Egreen GW12		
Size	Document Number		MCU HEADER		Rev
A					EVT1
Date:	Friday, October 21, 2022	Sheet	18	of	24

USB1 TYPE-A

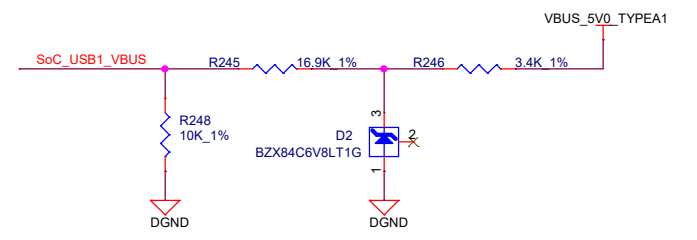
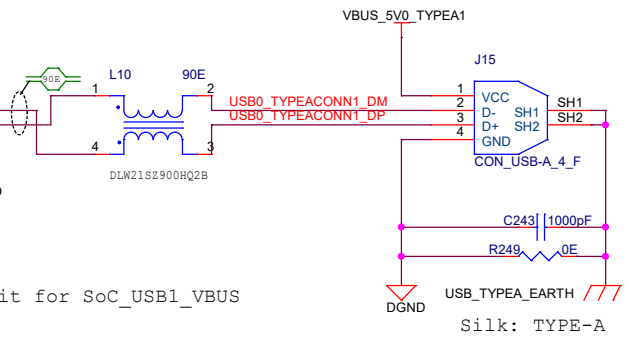


USB0 TYPE-A

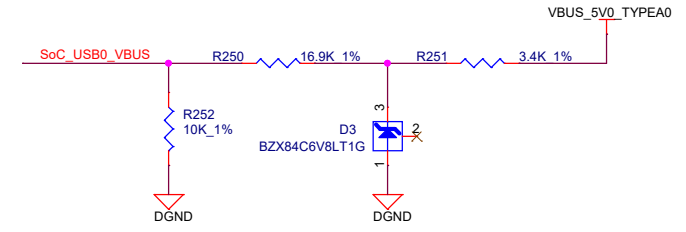
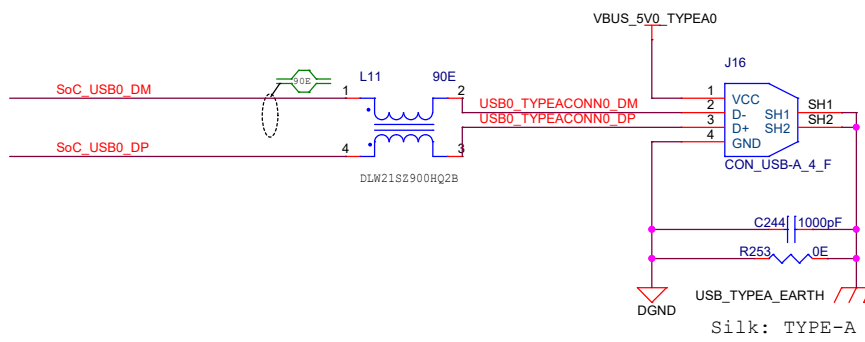


U6D	
USB0	
PwrGrp:VDDA_1P8_USB, VDDA_3P3_USB	USB0_DP AD11 SoC_USB0_DP
	USB0_DM AE11 SoC_USB0_DM
	USB0_RCALIB AE10 R244 499E 0.1%
	USB0_VBUS AC11 SoC_USB0_VBUS
USB1	
PwrGrp:VDDA_1P8_USB, VDDA_3P3_USB	USB1_DP AE9 SoC_USB1_DP
	USB1_DM AD10 SoC_USB1_DM
	USB1_RCALIB AC9 R247 499E 0.1%
	USB1_VBUS AB10 SoC_USB1_VBUS
GENERAL	
PwrGrp:VDDSHV0	USB0_DRVVBUS C20 SoC_USB0_DRVVBUS
	USB1_DRVVBUS F18 SoC_USB1_DRVVBUS

Note: Recommended VBUS circuit for SoC_USB1_VBUS

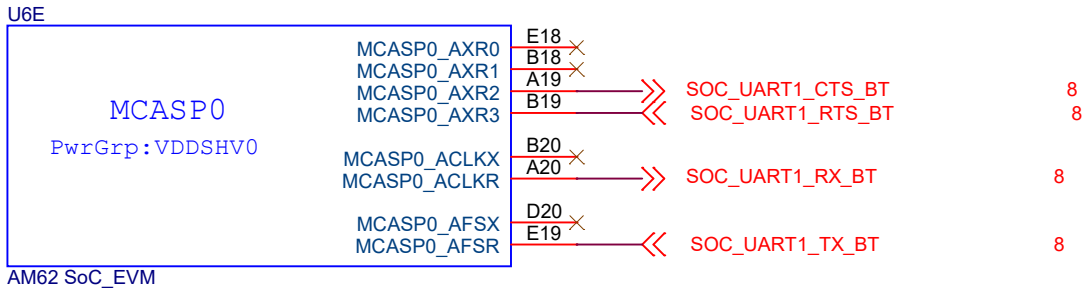
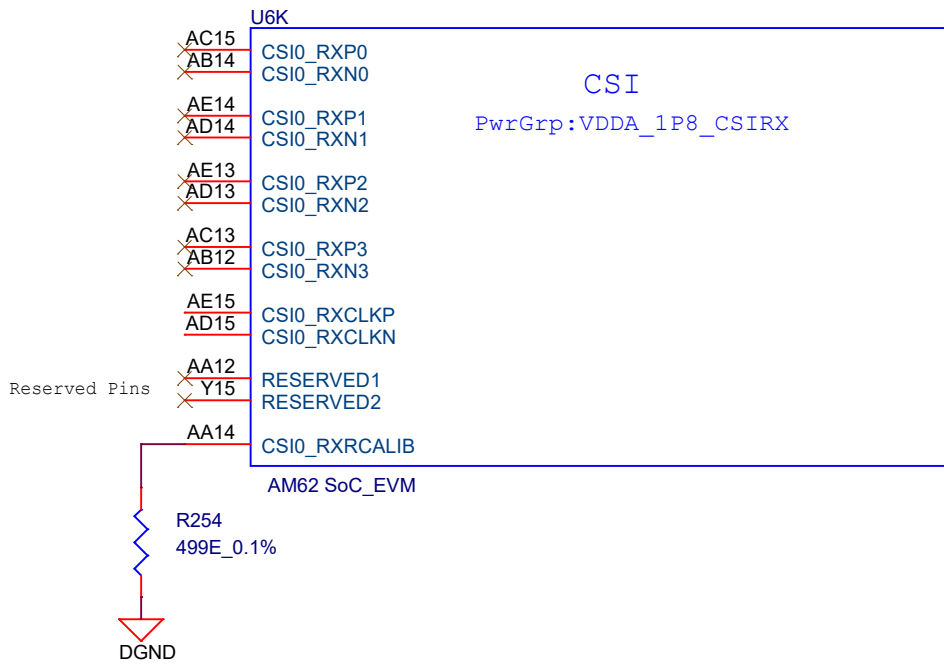
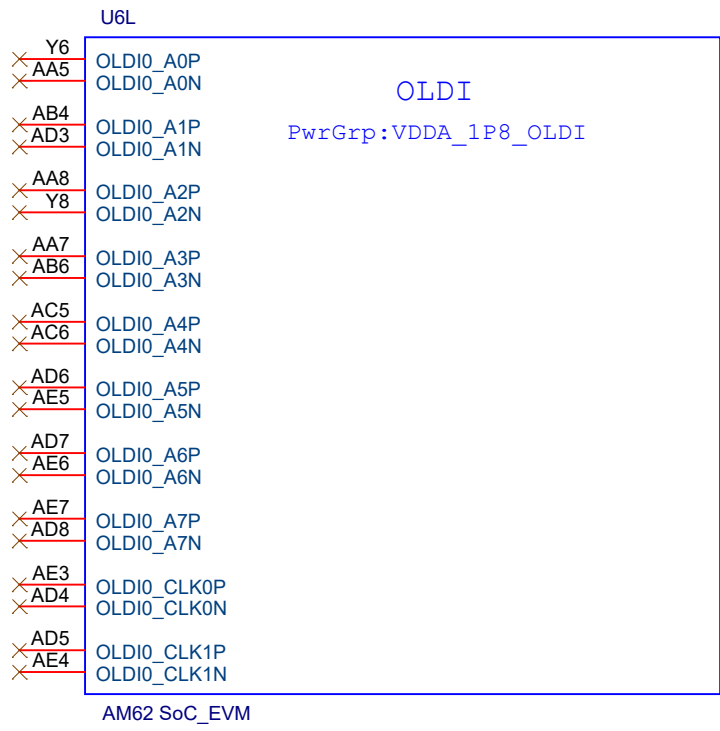


Silk: TYPE-A



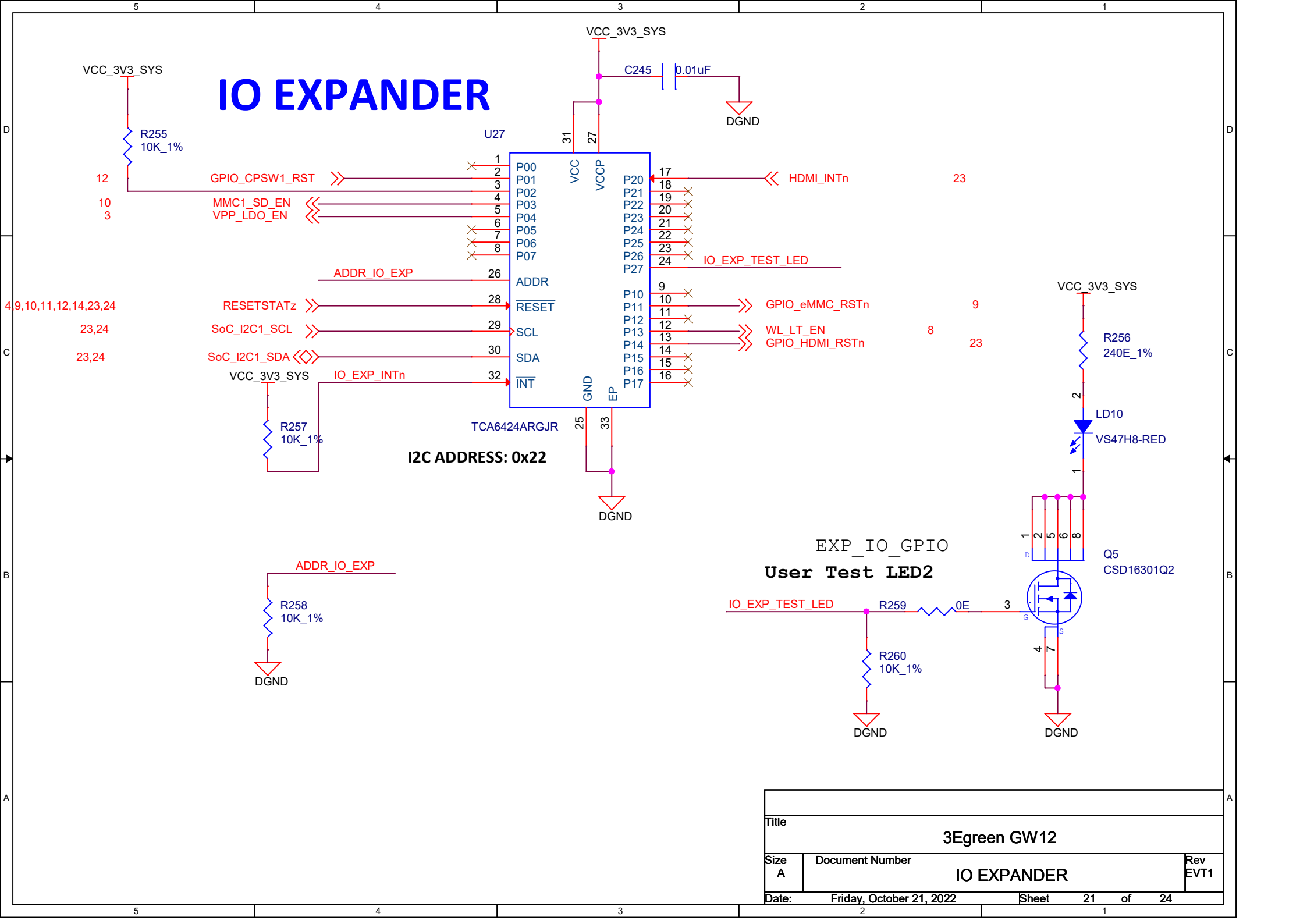
Silk: TYPE-A

Title		
3Egreen GW12		
Size B	Document Number	Rev
	USB1 TYPE-A	EVT1
Date:	Friday, October 21, 2022	Sheet 19 of 24



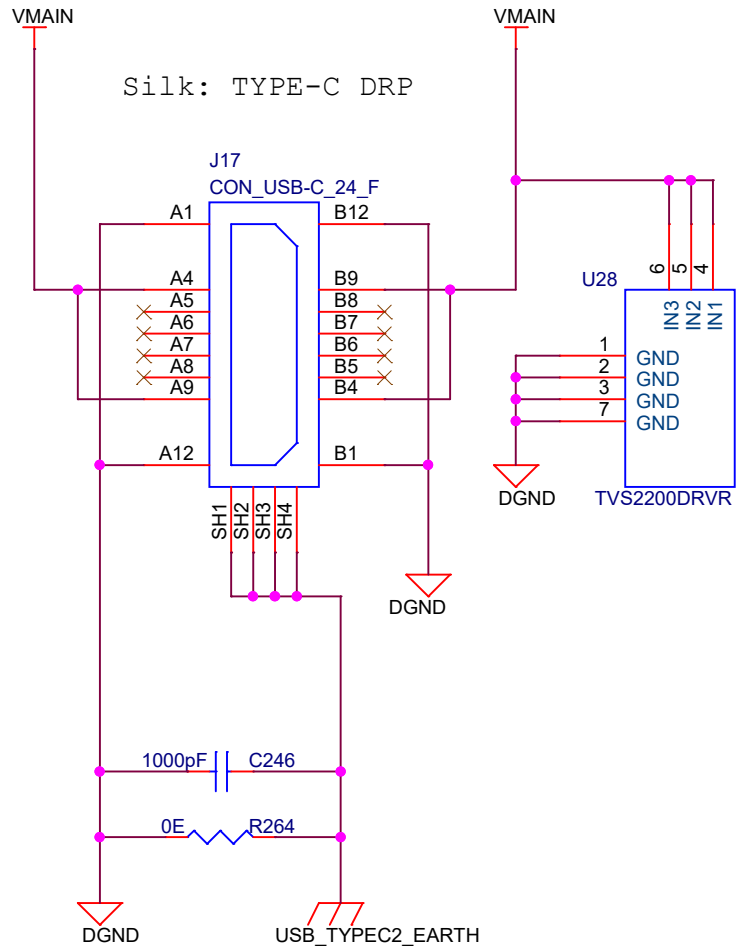
Title		
3Egreen GW12		
Size A	Document Number	Rev
	CSI	EVT1
Date:	Friday, October 21, 2022	Sheet 20 of 24

IO EXPANDER



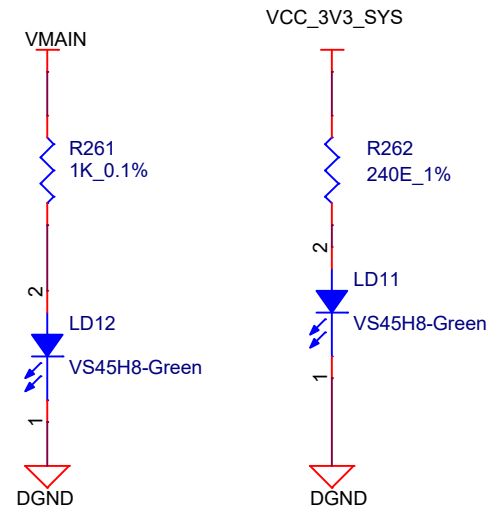
Title		
3Egreen GW12		
Size	Document Number	Rev
A	IO EXPANDER	EVT1
Date:	Friday, October 21, 2022	Sheet 21 of 24

POWER USB0 TYPE-C

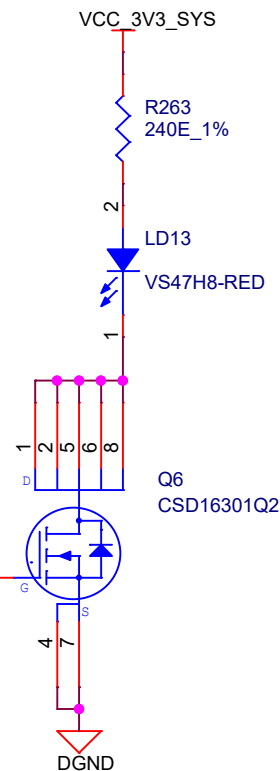


Silk: TYPE-C DRP

POWER INDICATION LED: VBUS_TYPEC2



POWER RAIL LEDS



4,24

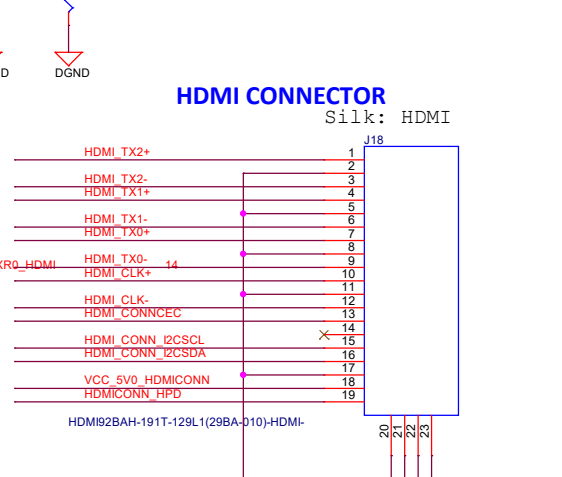
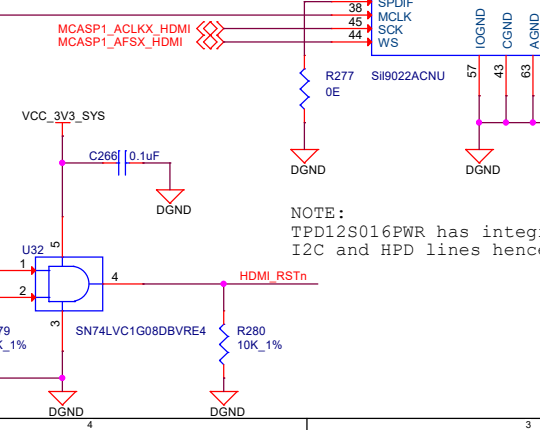
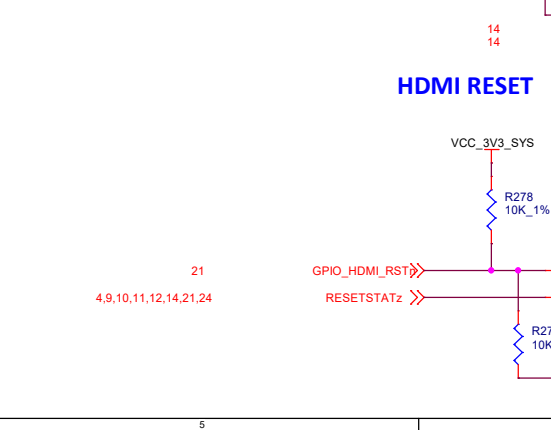
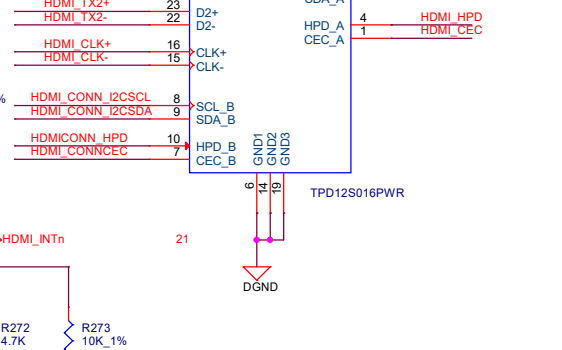
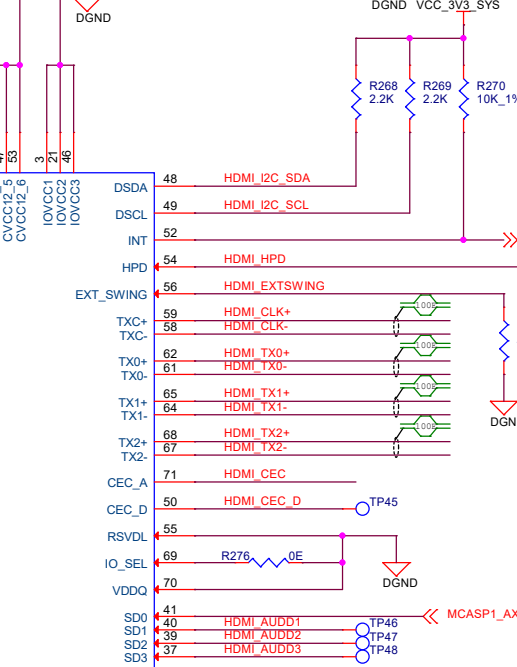
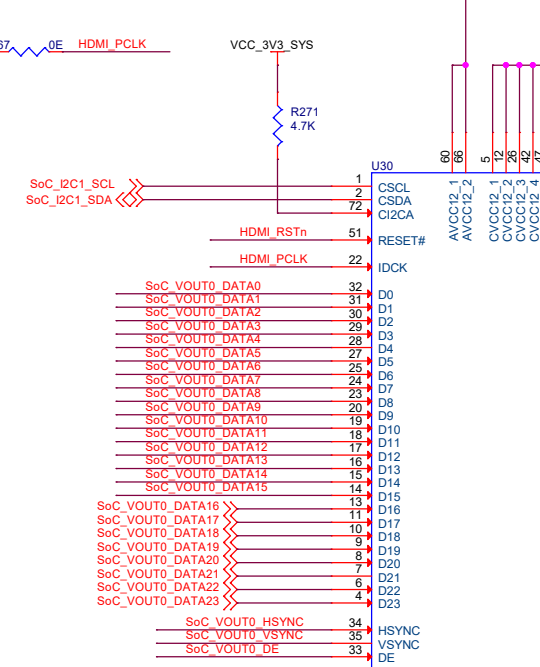
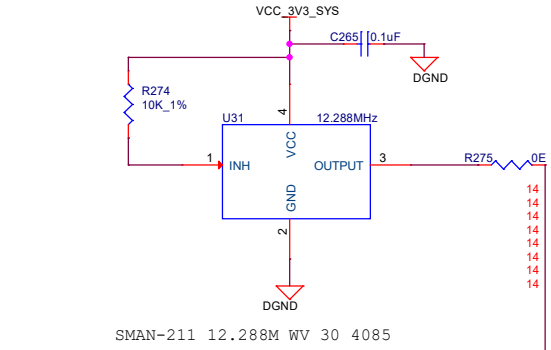
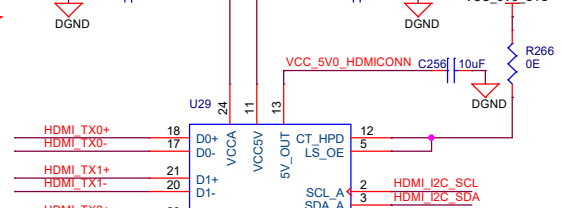
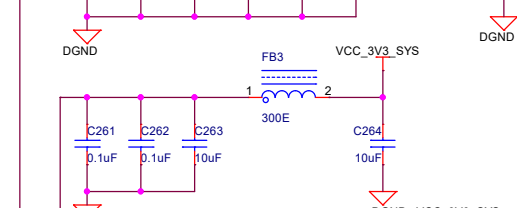
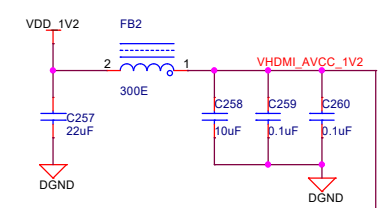
PMIC_PGOOD

Title		
3Egreen GW12		
Size A	Document Number	Rev
	POWER USB0 TYPE-C	EVT1
Date:	Friday, October 21, 2022	Sheet 22 of 24

HDMI INTERFACE

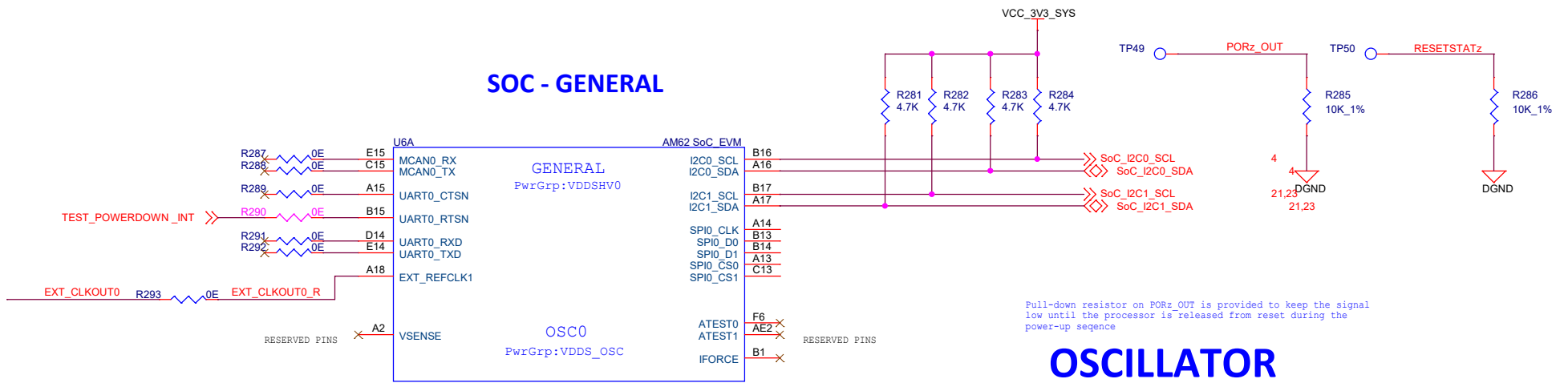
U6N AM62 SoC_EVM

VOUT0_DATA0	U22	SoC_VOUT0_DATA0
VOUT0_DATA1	V24	SoC_VOUT0_DATA1
VOUT0_DATA2	W25	SoC_VOUT0_DATA2
VOUT0_DATA3	W24	SoC_VOUT0_DATA3
VOUT0_DATA4	Y25	SoC_VOUT0_DATA4
VOUT0_DATA5	Y24	SoC_VOUT0_DATA5
VOUT0_DATA6	Y23	SoC_VOUT0_DATA6
VOUT0_DATA7	AA25	SoC_VOUT0_DATA7
VOUT0_DATA8	V21	SoC_VOUT0_DATA8
VOUT0_DATA9	W21	SoC_VOUT0_DATA9
VOUT0_DATA10	V20	SoC_VOUT0_DATA10
VOUT0_DATA11	AA23	SoC_VOUT0_DATA11
VOUT0_DATA12	AB25	SoC_VOUT0_DATA12
VOUT0_DATA13	AA24	SoC_VOUT0_DATA13
VOUT0_DATA14	Y22	SoC_VOUT0_DATA14
VOUT0_DATA15	AA21	SoC_VOUT0_DATA15
VOUT0_PCLK	AC24	SoC_VOUT0_PCLK
VOUT0_DE	Y20	SoC_VOUT0_DE
VOUT0_VSYNC	AC25	SoC_VOUT0_VSYNC
VOUT0_HSYNC	AB24	SoC_VOUT0_HSYNC



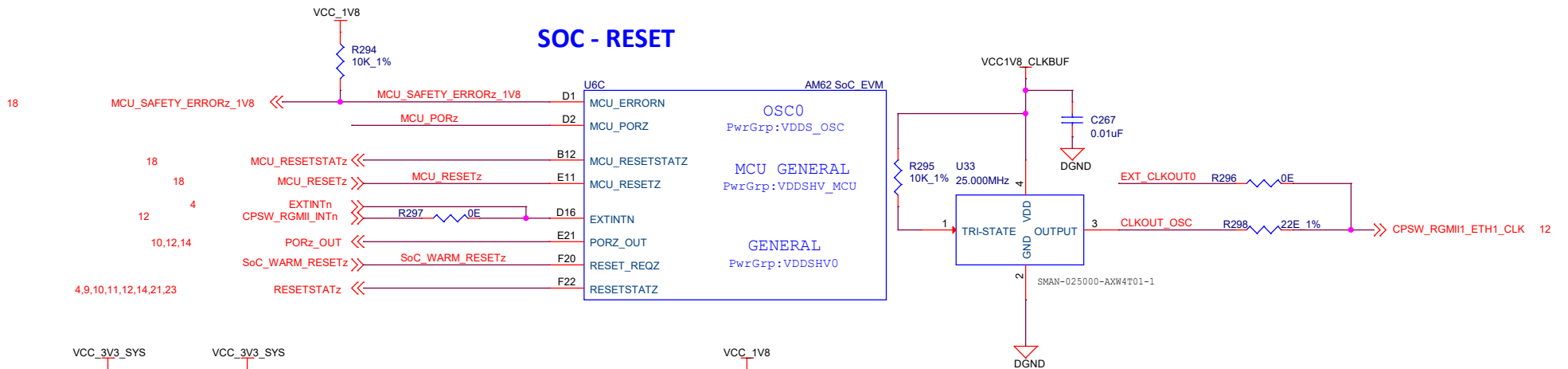
Title			3Egreen GW12		
Size	Document Number				Rev
Custom	HDMI INTERFACE				EVT1
Date:	Friday, October 21, 2022	Sheet	23	of	24

SOC - GENERAL

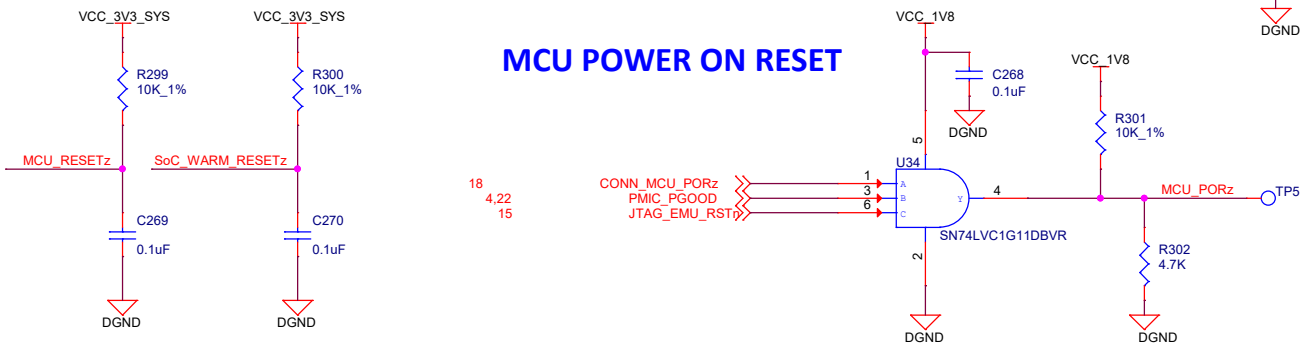


OSCILLATOR

SOC - RESET



MCU POWER ON RESET



Title			3Egreen GW12		
Size	Document Number				Rev
B	SOC RESET				EVT1
Date:	Friday, October 21, 2022				Sheet 24 of 24