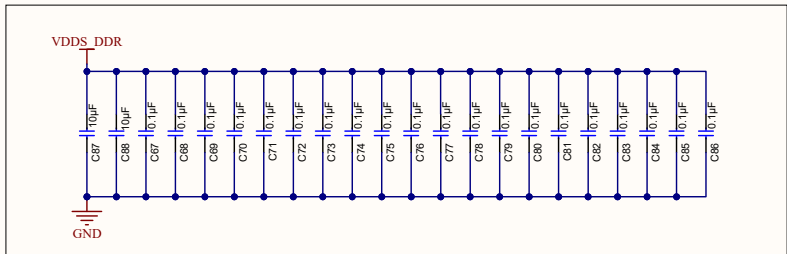
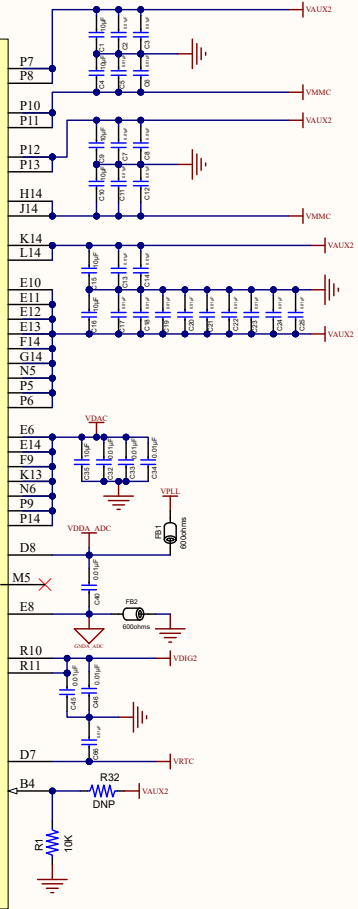


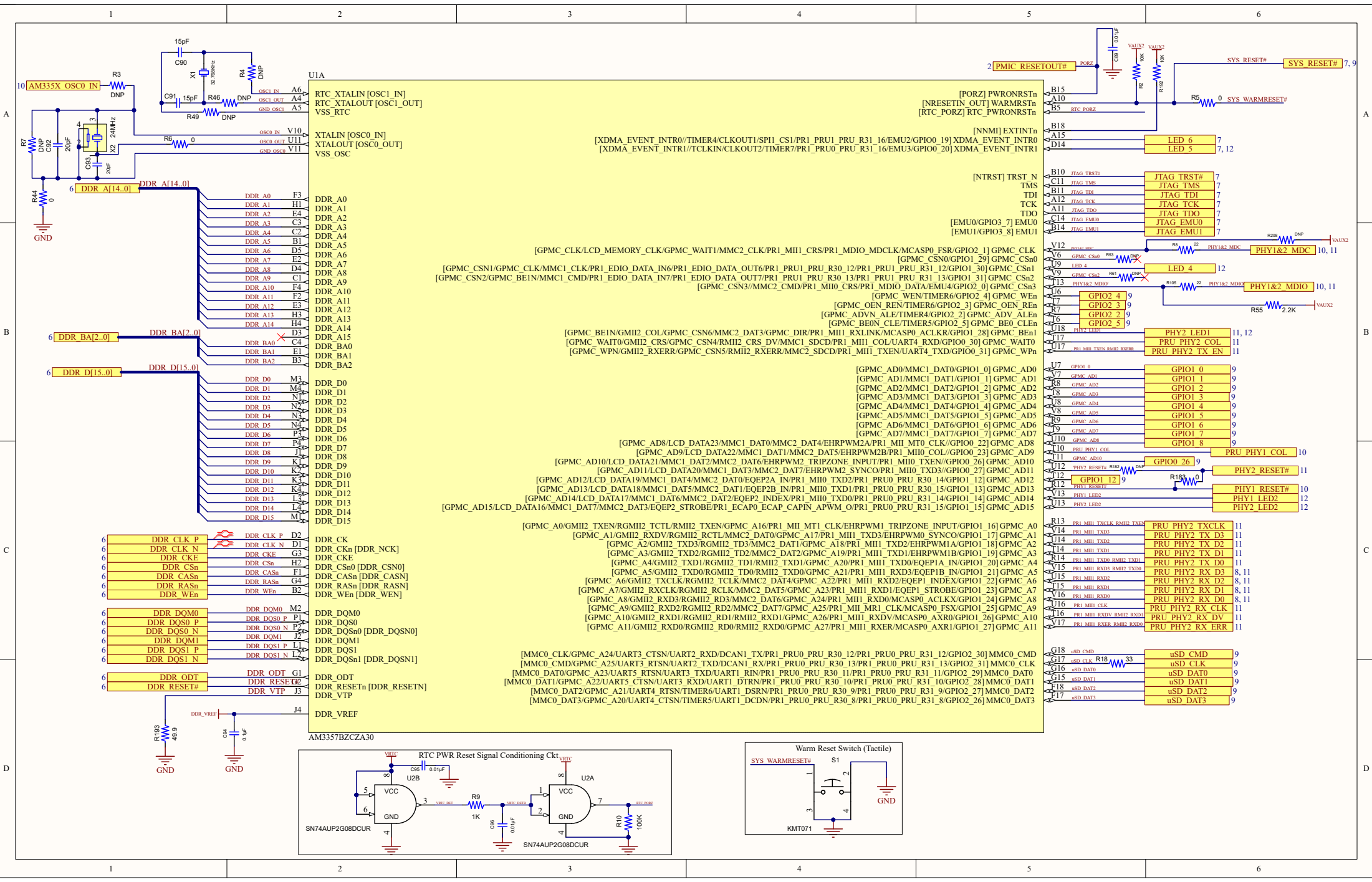
UIC

F6	VDD_CORE
F7	VDD_CORE
G6	VDD_CORE
G7	VDD_CORE
G10	VDD_CORE
H11	VDD_CORE
J12	VDD_CORE
K6	VDD_CORE
K8	VDD_CORE
K12	VDD_CORE
L6	VDD_CORE
L7	VDD_CORE
L8	VDD_CORE
L9	VDD_CORE
M11	VDD_CORE
M13	VDD_CORE
N8	VDD_CORE
N9	VDD_CORE
N12	VDD_CORE
N13	VDD_CORE
F10	VDD_MPU
F11	VDD_MPU
F12	VDD_MPU
F13	VDD_MPU
G13	VDD_MPU
H13	VDD_MPU
J13	VDD_MPU
A2	VDD_MPU_MON
D9	CAP_VDD_SRAM_CORE
D11	CAP_VDD_SRAM_MPU
C10	CAP_VBB_MPU
D6	CAP_VDD_RTC
H15	VDD5_PLL_MPU
D10	VDD5_SRAM_MPU_BB
E9	VDD5_SRAM_CORE_BG
E7	VDD5_PLL_DDR
N15	VDDA3P3V_USB0
R15	VDDA3P3V_USB1
N16	VDDA1P8V_USB0
R16	VDDA1P8V_USB1
E5	VDD5_DDR
F5	VDD5_DDR
G5	VDD5_DDR
H5	VDD5_DDR
J5	VDD5_DDR
K5	VDD5_DDR
L5	VDD5_DDR

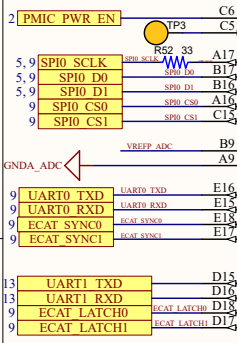
P7	VDDSHV1
P8	VDDSHV1
P10	VDDSHV2
P11	VDDSHV2
P12	VDDSHV3
P13	VDDSHV3
H14	VDDSHV4
J14	VDDSHV4
K14	VDDSHV5
L14	VDDSHV5
E10	VDDSHV6
E11	VDDSHV6
E12	VDDSHV6
E13	VDDSHV6
E14	VDDSHV6
G14	VDDSHV6
N5	VDDSHV6
P5	VDDSHV6
P6	VDDSHV6
E6	VDD5
E14	VDD5
F9	VDD5
K13	VDD5
N6	VDD5
P9	VDD5
P14	VDD5
D8	VDDA_ADC
M5	VVP
E8	VSSA_ADC
R10	VDD5_PLL_CORE_LCD
R11	VDD5_OSC
D7	VDD5_RTC
B4	[ENZ_KALDO_1P8V] RTC_KALDO_EN_N
N14	VSSA_USB
M14	VSSA_USB
A3	VSSA_USB RESERVED



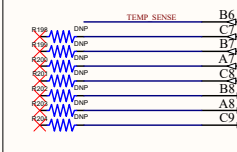
AM3357BZCZA30



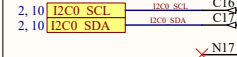
UIB



PMIC POWER_EN
EXT_WAKEUP
SPI0_SCLK [SPI0_SCLK/UART2_RXD/I2C2_SDA/EHRPWM0A/PR1_UART0_CTS_N/PR1_EDIO_SOF/EMU2/GPIO0_2]
SPI0_D0 [SPI0_D0/UART2_TXD/I2C2_SCL/EHRPWM0B/PR1_UART0_RTS_N/PR1_EDIO_LATCH_IN/EMU3/GPIO0_3]
SPI0_D1 [SPI0_D1/MMC1_SDWP/I2C1_SDA/EHRPWM0_TRIPZONE_INPUT/PR1_UART0_RXD/PR1_EDIO_DATA_IN0/PR1_EDIO_DATA_OUT0/GPIO0_4]
SPI0_CS0 [SPI0_CS0/MMC2_SDWP/I2C1_SCL/EHRPWM0_SYNC0/PR1_UART0_TXD/PR1_EDIO_DATA_IN1/PR1_EDIO_DATA_OUT1/GPIO0_5]
SPI0_CS1 [SPI0_CS1/UART3_RXD/ECAP1_IN_PWM1_OUT/MMC0_POW/XDMA_EVENT_INTR2/MMC0_SDCD/EMU4/GPIO0_6]
VREFP
VREFN
UART0_TXD [UART0_TXD/SPI1_CS1/DCAN0_RX/I2C2_SCL/ECAP1_IN_PWM1_OUT/PR1_PRU1_PRU_R30_15/PR1_PRU1_PRU_R31_15/GPIO1_11]
UART0_RXD [UART0_RXD/SPI1_CS0/DCAN0_RX/I2C2_SDA/ECAP2_IN_PWM2_OUT/PR1_PRU1_PRU_R30_14/PR1_PRU1_PRU_R31_14/GPIO1_10]
UART0_CTS_N [UART0_CTSN/UART4_RXD/DCAN1_TX/I2C1_SDA/SPI1_D0/TIMER7/PR1_EDC_SYNC0_OUT/GPIO1_8]
UART0_RTS_N [UART0_RTSN/UART4_TXD/DCAN1_RX/I2C1_SCL/SPI1_D1/SPI1_CS0/PR1_EDC_SYNC1_OUT/GPIO1_9]
UART1_TXD [UART1_TXD/MMC2_SDWP/DCAN1_RX/I2C1_SCL/PR1_UART0_TXD/PR1_PRU0_PRU_R31_16/GPIO0_15]
UART1_RXD [UART1_RXD/MMC1_SDWP/DCAN1_TX/I2C1_SDA/PR1_UART0_RXD/PR1_PRU1_PRU_R31_16/GPIO0_14]
UART1_CTS_N [UART1_CTSN/TIMER6/DCAN0_TX/I2C2_SDA/SPI1_CS0/PR1_UART0_CTS_N/PR1_EDC_LATCH0_IN/GPIO0_12]
UART1_RTS_N [UART1_RTSN/TIMER5/DCAN0_RX/I2C2_SCL/SPI1_CS1/PR1_UART0_RTS_N/PR1_EDC_LATCH1_IN/GPIO0_13]



[GMIH1_TXCLK/UART2_RXD/RGMIH1_TCLK/MMC0_DAT7/MMC1_DAT0/UART1_DCDN/MCASP0_ACLKX/GPIO3_9] MIH1_TX_CLK
[GMIH1_TXD0/RMIH1_TXD0/RGMIH1_TD0/MCASP1_AXR2/MCASP1_ACLKR/EQEP0B_IN/MMC1_CLK/GPIO0_28] MIH1_TXD0
[GMIH1_TXD1/RMIH1_TXD1/RGMIH1_TD1/MCASP1_FSR/MCASP1_AXR1/EOEP0A_IN/MMC1_CMD/GPIO0_21] MIH1_TXD1
[GMIH1_TXD2/DCAN0_RX/RGMIH1_TD2/UART4_TXD/MCASP1_AXR0/MMC2_DAT2/MCASP0_AHCLKX/GPIO0_17] MIH1_TXD2
[GMIH1_TXD3/DCAN0_TX/RGMIH1_TD3/UART4_RXD/MCASP1_FSX/MMC2_DAT1/MCASP0_FSR/GPIO0_16] MIH1_TXD3
[GMIH1_TXEN/RMIH1_TXEN/RGMIH1_TCTL/TIMER4/MCASP1_AXR0/EOEP0_INDEX/MMC2_CMD/GPIO3_3] MIH1_TX_EN
[GMIH1_CRIS/RMIH1_CRIS_DV/SPI1_D0/I2C1_SDA/MCASP1_ACLKX/UART5_CTSN/UART2_RXD/GPIO3_1] MIH1_CRIS
[GMIH1_COL/RMIH2_REFCLK/SPI1_SCLX/UART5_RXD/MCASP1_AXR2/MMC2_DAT3/MCASP0_AXR2/GPIO3_0] MIH1_COL
[GMIH1_RXCLK/UART2_TXD/RGMIH1_RCLK/MMC0_DAT6/MMC1_DAT1/UART1_DSRN/MCASP0_FSX/GPIO3_10] MIH1_RX_CLK
[GMIH1_RXD0/RMIH1_RXD0/RGMIH1_RD0/MCASP1_AHCLKX/MCASP1_AHCLKR/MCASP1_ACLKR/MCASP0_AXR3/GPIO2_21] MIH1_RXD0
[GMIH1_RXD1/RMIH1_RXD1/RGMIH1_RD1/MCASP1_AXR3/MCASP1_FSR/EOEP0_STROBE/MMC2_CLK/GPIO2_20] MIH1_RXD1
[GMIH1_RXD2/UART3_TXD/RGMIH1_RD2/MMC0_DAT4/MMC1_DAT3/UART1_RIN/MCASP0_AXR1/GPIO2_19] MIH1_RXD2
[GMIH1_RXD3/UART3_TXD/RGMIH1_RD3/MMC0_DAT5/MMC1_DAT4/UART1_DTRN/MCASP0_AXR0/GPIO2_18] MIH1_RXD3
[GMIH1_RXERR/RMIH1_RXERR/SPI1_D1/I2C1_SCL/MCASP1_FSX/UART5_RTSN/UART2_TXD/GPIO3_1] MIH1_RX_ERR
[GMIH1_RXD_V/LCD_MEMORY_CLK/RGMIH1_RCTL/UART5_TXD/MCASP1_ACLKX/MMC2_DAT0/MCASP0_ACLKR/GPIO3_4] MIH1_RX_DV
[RMIH1_REFCLK/XDMA_EVENT_INTR2/SPI1_CS0/UART5_TXD/MCASP1_AXR3/MMC0_POW/MCASP1_AHCLKX/GPIO0_29] RMIH1_REF_CLK
[MDIO_CLK/TIMERS/UART5_TXD/UART3_RTSN/MMC0_SDWP/MMC1_CLK/MMC2_CLK/GPIO0_1] MDIO
[MDIO_DATA/TIMER6/UART5_RXD/UART3_CTSN/MMC0_SDCD/MMC1_CMD/MMC2_CMD/GPIO0_0] MDIO



[LCD_DATA0/GPMC_A0/PR1_MII_MT0_CLK/EHRPWM2A/PR1_PRU1_PRU_R30_0/PR1_PRU1_PRU_R31_0/GPIO2_6] LCD_DATA0
[LCD_DATA1/GPMC_A1/PR1_MII0_TXEN/EHRPWM2B/PR1_PRU1_PRU_R30_1/PR1_PRU1_PRU_R31_1/GPIO2_7] LCD_DATA1
[LCD_DATA2/GPMC_A2/PR1_MII0_TXD3/EHRPWM2_TRIPZONE_INPUT/PR1_PRU1_PRU_R30_2/PR1_PRU1_PRU_R31_2/GPIO2_8] LCD_DATA2
[LCD_DATA3/GPMC_A3/PR1_MII0_TXD2/EHRPWM2_SYNC1_O/PR1_PRU1_PRU_R30_3/PR1_PRU1_PRU_R31_3/GPIO2_9] LCD_DATA3
[LCD_DATA4/GPMC_A4/PR1_MII0_TXD1/EOEP2A_IN/PR1_PRU1_PRU_R30_4/PR1_PRU1_PRU_R31_4/GPIO2_10] LCD_DATA4
[LCD_DATA5/GPMC_A5/PR1_MII0_TXD0/EOEP2B_IN/PR1_PRU1_PRU_R30_5/PR1_PRU1_PRU_R31_5/GPIO2_11] LCD_DATA5
[LCD_DATA6/GPMC_A6/PR1_EDIO_DATA_IN6/EOEP2_INDEX/PR1_EDIO_DATA_OUT6/PR1_PRU1_PRU_R30_6/PR1_PRU1_PRU_R31_6/GPIO2_12] LCD_DATA6
[LCD_DATA7/GPMC_A7/PR1_EDIO_DATA_IN7/EOEP2_STROBE/PR1_EDIO_DATA_OUT7/PR1_PRU1_PRU_R30_7/PR1_PRU1_PRU_R31_7/GPIO2_13] LCD_DATA7
[LCD_DATA8/GPMC_A12/EHRPWM1_TRIPZONE_INPUT/MCASP0_ACLKX/UART5_TXD/PR1_MII0_RXD3/UART2_CTSN/GPIO2_14] LCD_DATA8
[LCD_DATA9/GPMC_A13/EHRPWM1_SYNC0/MCASP0_FSX/UART5_RXD/PR1_MII0_RXD2/UART2_RTSN/GPIO2_15] LCD_DATA9
[LCD_DATA10/GPMC_A14/EHRPWM1A/MCASP0_AXR0/PR1_MII0_RXD1/UART3_CTSN/GPIO2_16] LCD_DATA10
[LCD_DATA11/GPMC_A15/EHRPWM1B/MCASP0_AHCLKR/MCASP0_AXR2/PR1_MII0_RXD0/UART3_RTSN/GPIO2_17] LCD_DATA11
[LCD_DATA12/GPMC_A16/EOEP1A_IN/MCASP0_ACLKR/MCASP0_AXR2/PR1_MII0_RXLINK/UART4_CTSN/GPIO0_8] LCD_DATA12
[LCD_DATA13/GPMC_A17/EOEP1B_IN/MCASP0_FSR/MCASP0_AXR3/PR1_MII0_RXER/UART4_RTSN/GPIO0_9] LCD_DATA13
[LCD_DATA14/GPMC_A18/EOEP1_INDEX/MCASP0_AXR1/UART5_RXD/PR1_MII0_CLK/UART5_CTSN/GPIO0_10] LCD_DATA14
[LCD_DATA15/GPMC_A19/EOEP1_STROBE/MCASP0_AHCLKX/MCASP0_AXR3/PR1_MII0_RXD_V/UART5_RTSN/GPIO0_11] LCD_DATA15

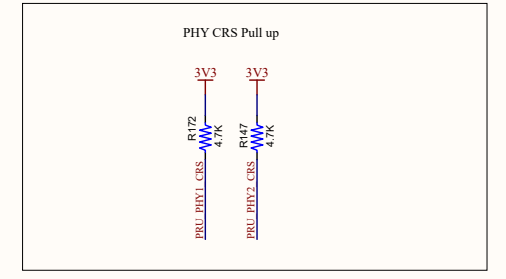
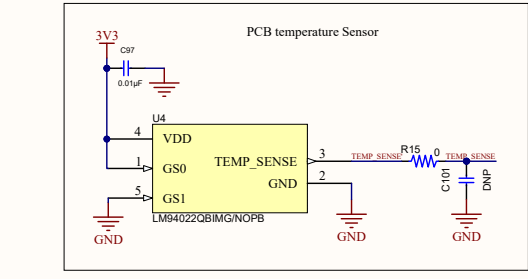
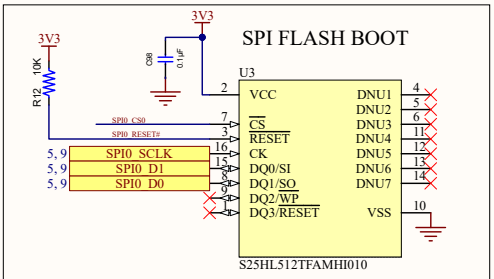
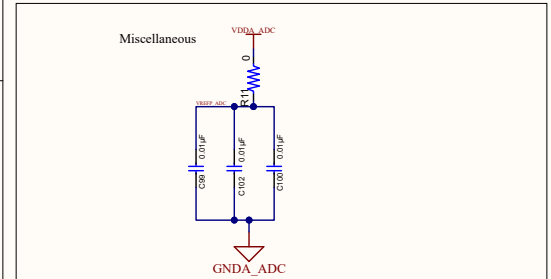
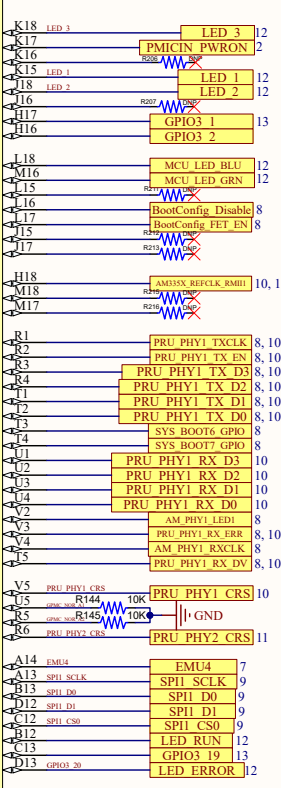


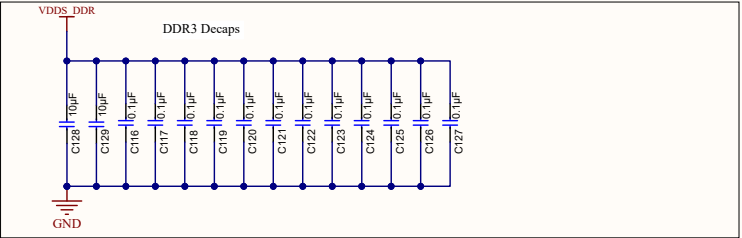
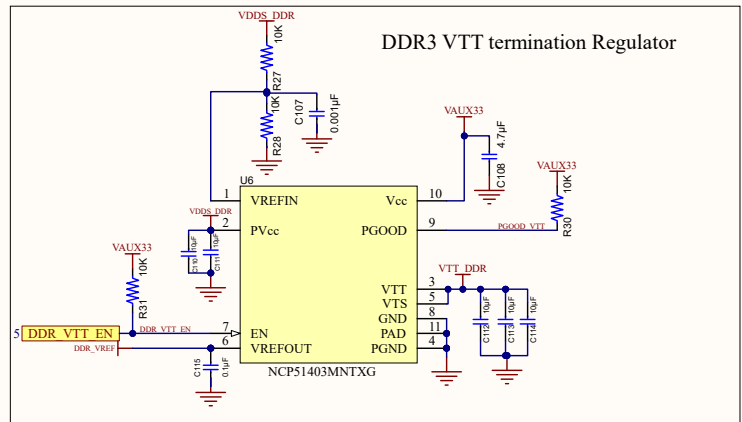
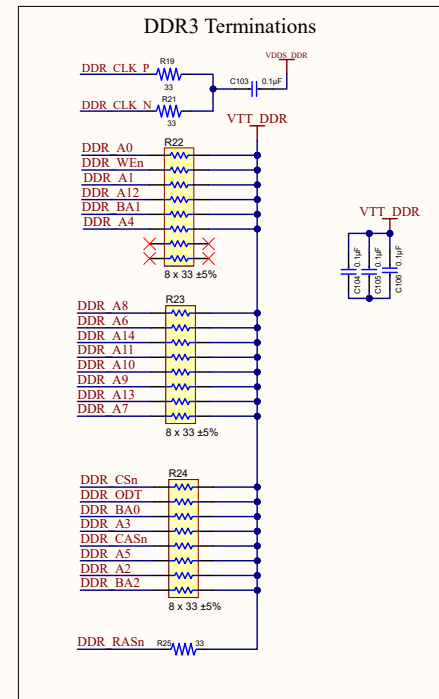
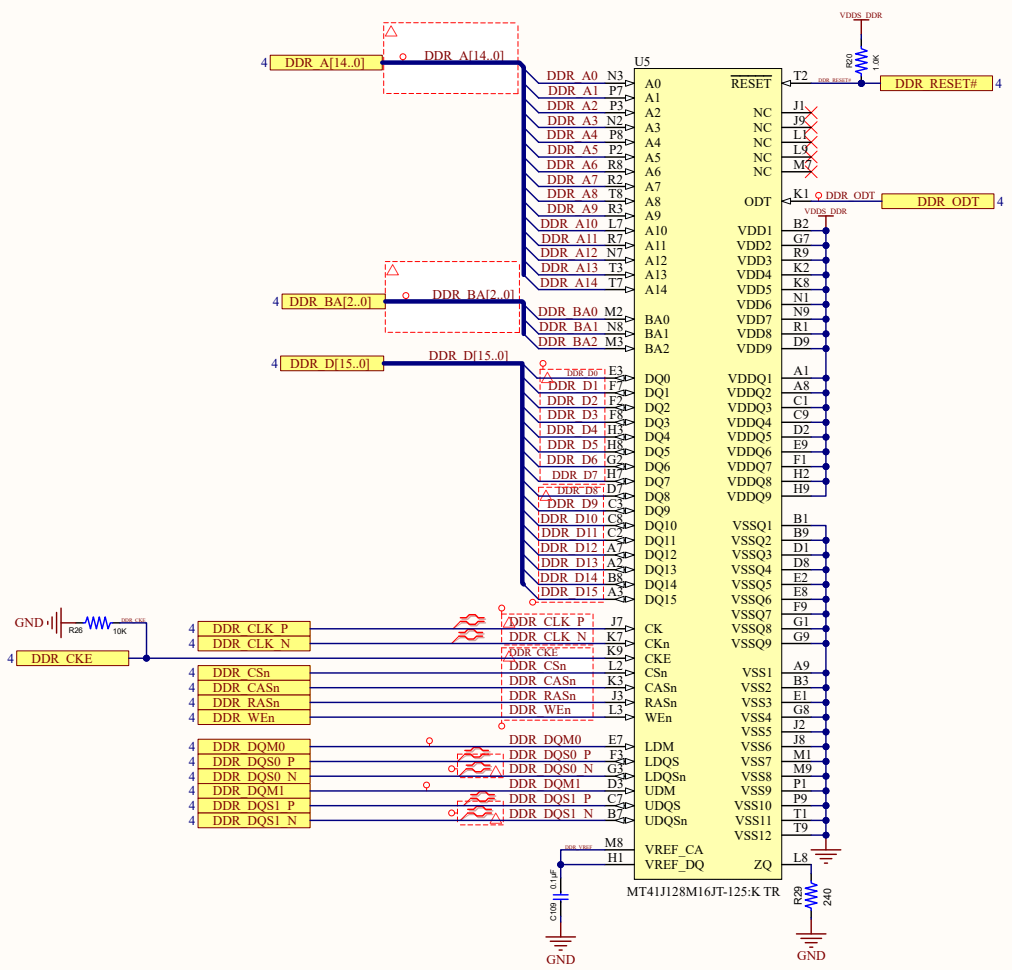
USB0_DP [N17]
USB0_DM [N18]
USB0_CE [M15]
USB0_ID [P16]
USB0_DRVVBUS [USB0_DRVVBUS/GPIO0_18]
USB0_VBUS [P13]
LCD_PCLK [GPMC_A10/PR1_MII0_CRIS/PR1_EDIO_DATA_IN4/PR1_EDIO_DATA_OUT4/PR1_PRU1_PRU_R30_10/PR1_PRU1_PRU_R31_10/GPIO2_24] LCD_PCLK
LCD_VSYNC [GPMC_A8/PR1_EDIO_DATA_IN2/PR1_EDIO_DATA_OUT2/PR1_PRU1_PRU_R30_8/PR1_PRU1_PRU_R31_8/GPIO2_22] LCD_VSYNC
LCD_HSYNC [GPMC_A9/PR1_EDIO_DATA_IN3/PR1_EDIO_DATA_OUT3/PR1_PRU1_PRU_R30_9/PR1_PRU1_PRU_R31_9/GPIO2_23] LCD_HSYNC
[LCD_AC_BIAS_EN/GPMC_A11/PR1_MII1_CRIS/PR1_EDIO_DATA_IN5/PR1_EDIO_DATA_OUT5/PR1_PRU1_PRU_R30_11/PR1_PRU1_PRU_R31_11/GPIO2_25] LCD_AC_BIAS_EN

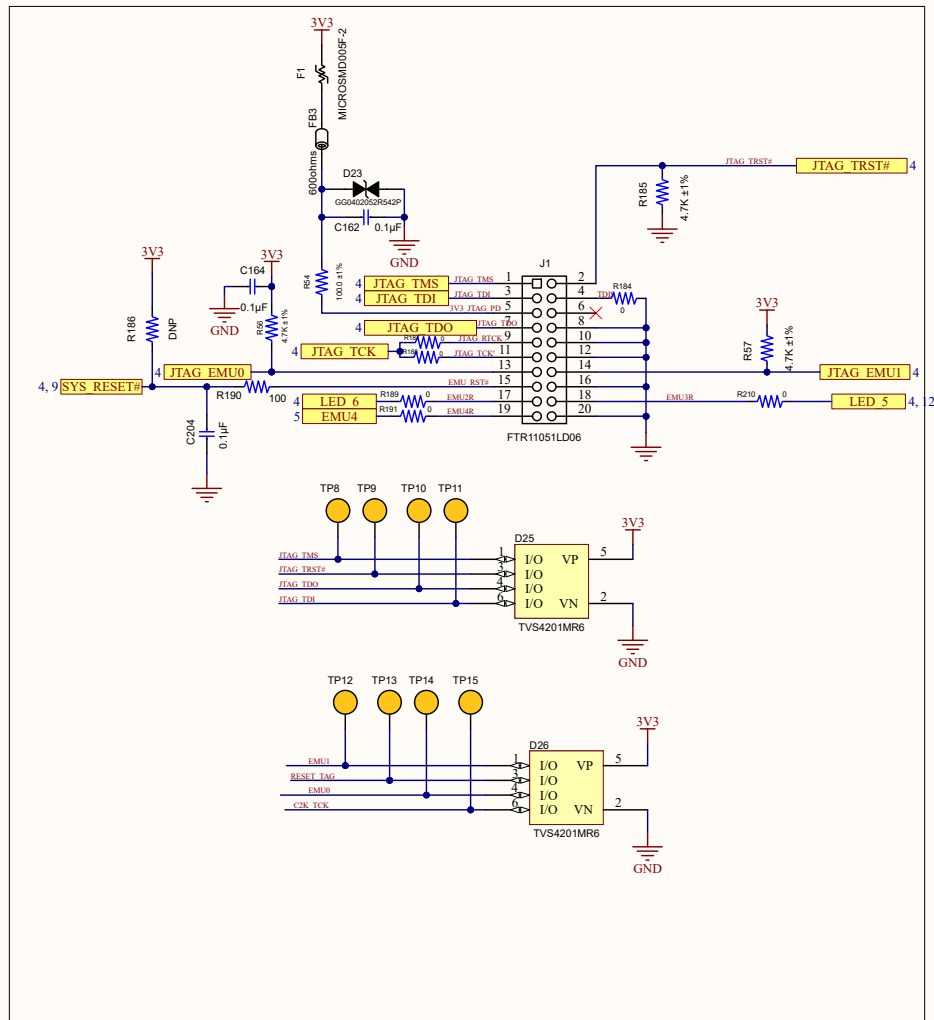


[MCASP0_AHCLKX/EOEP0_STROBE/MCASP0_AXR3/MCASP1_AXR1/EMU4/PR1_PRU0_PRU_R30_7/PR1_PRU0_PRU_R31_7/GPIO3_21] MCASP0_AHCLKX
[MCASP0_ACLKX/EHRPWM0A/SPI1_SCLX/MMC0_SDCD/PR1_PRU0_PRU_R30_0/PR1_PRU0_PRU_R31_0/GPIO3_14] MCASP0_ACLKX
[MCASP0_FSX/EHRPWM0B/SPI1_D0/MMC1_SDCD/PR1_PRU0_PRU_R30_1/PR1_PRU0_PRU_R31_1/GPIO3_15] MCASP0_FSX
[MCASP0_AXR0/EHRPWM0_TRIPZONE_INPUT/SPI1_DI/MMC2_SDCD/PR1_PRU0_PRU_R30_2/PR1_PRU0_PRU_R31_2/GPIO3_16] MCASP0_AXR0
[MCASP0_AHCLKR/EHRPWM0_SYNC1_O/MCASP0_AXR2/SPI1_CS0/ECAP2_IN_PWM2_OUT/PR1_PRU0_PRU_R30_3/PR1_PRU0_PRU_R31_3/GPIO3_17] MCASP0_AHCLKR
[MCASP0_ACLKR/EOEP0A_IN/MCASP0_AXR2/MCASP1_ACLKX/MMC0_SDWP/PR1_PRU0_PRU_R30_4/PR1_PRU0_PRU_R31_4/GPIO3_18] MCASP0_ACLKR
[MCASP0_FSR/EOEP0B_IN/MCASP0_AXR3/MCASP1_FSX/EMU2/PR1_PRU0_PRU_R30_5/PR1_PRU0_PRU_R31_5/GPIO3_19] MCASP0_FSR
[MCASP0_AXR1/EOEP0_INDEX/MCASP1_AXR0/EMU3/PR1_PRU0_PRU_R30_6/PR1_PRU0_PRU_R31_6/GPIO3_20] MCASP0_AXR1
ECAP0_IN_PWM0_OUT [ECAP0_IN_PWM0_OUT/UART3_TXD/SPI1_CS1/PR1_ECAP0_ECAP_CAPIN_APWM_O/SPI1_SCLX/MMC0_SDWP/XDMA_EVENT_INTR2/GPIO0_7]

AM3357BZCZA30



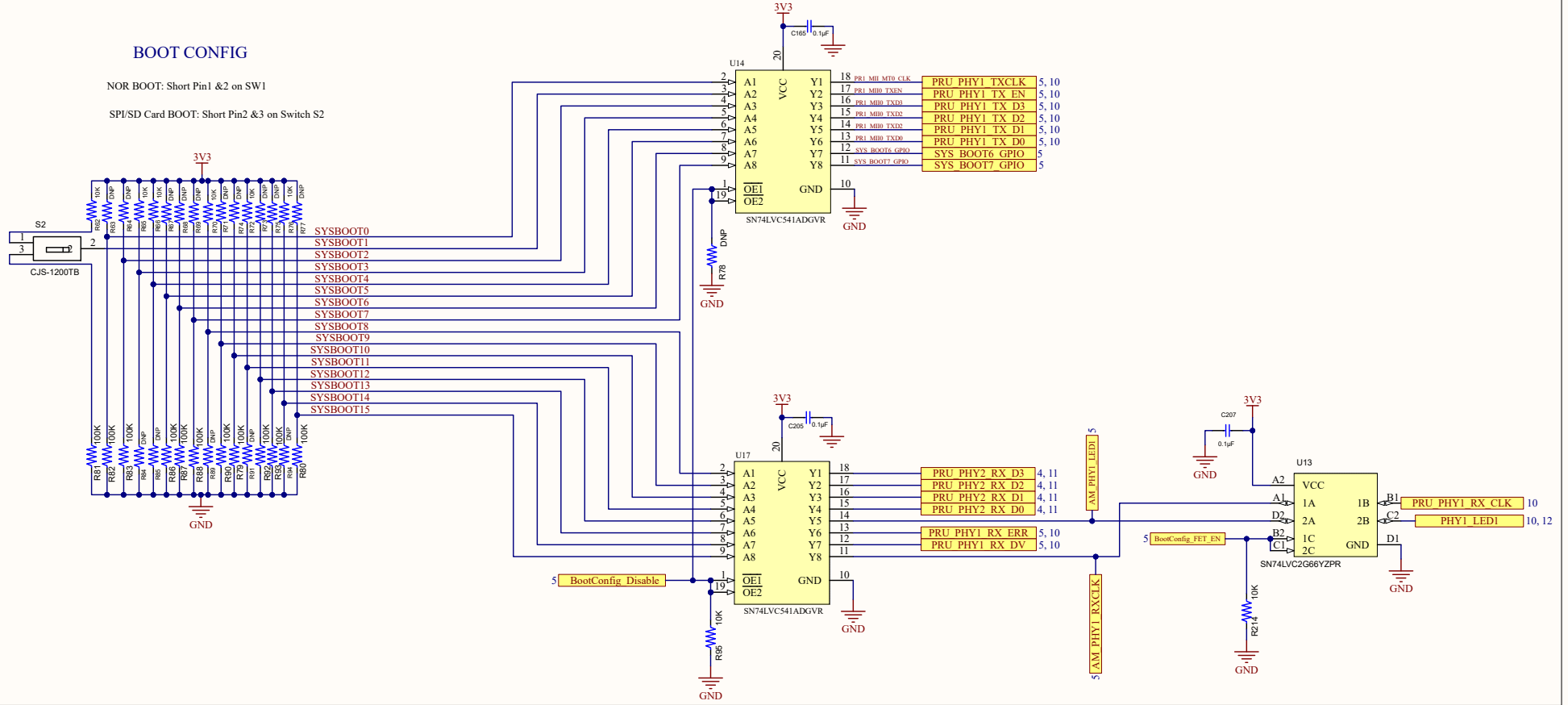




BOOT CONFIG

NOR BOOT: Short Pin1 &2 on SW1

SPI/SD Card BOOT: Short Pin2 &3 on Switch S2



1 2 3 4 5 6

A

A

B

B

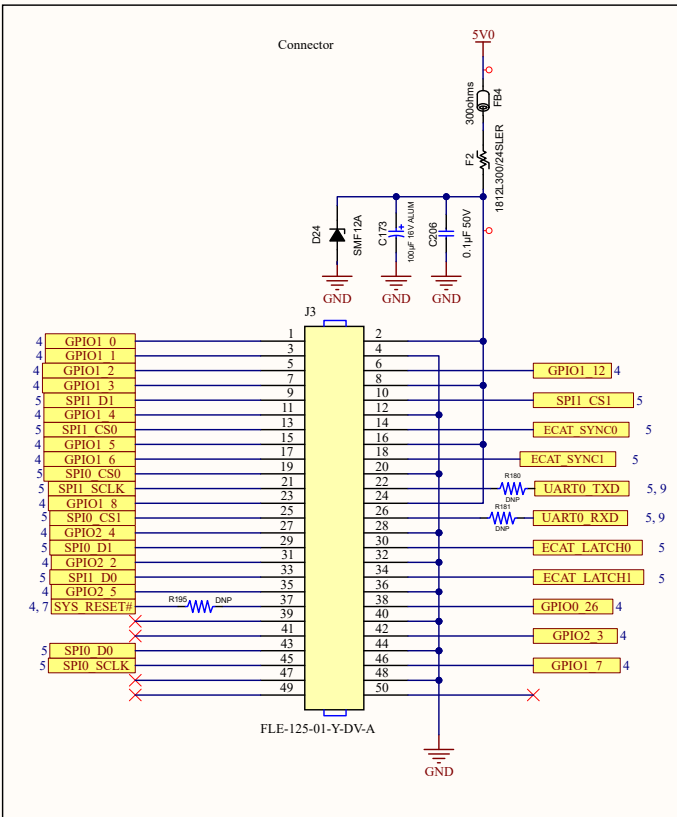
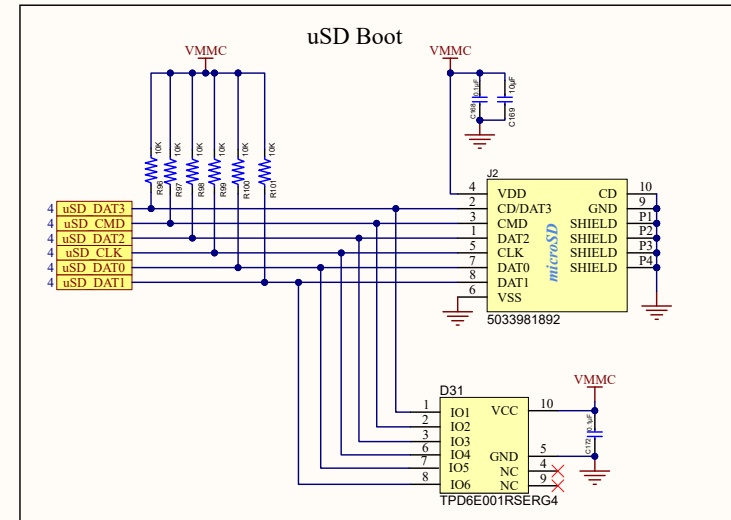
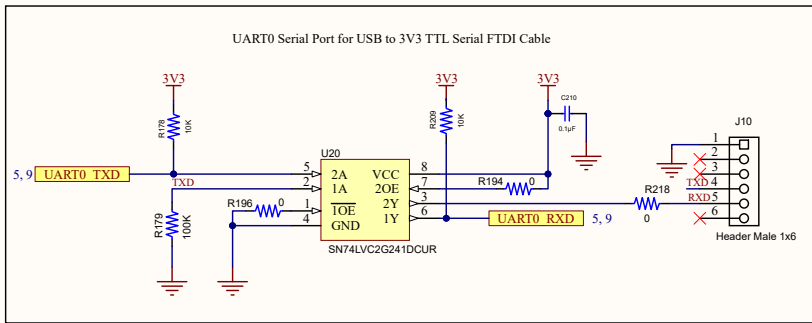
C

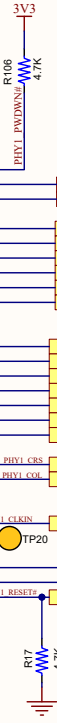
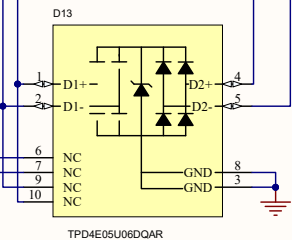
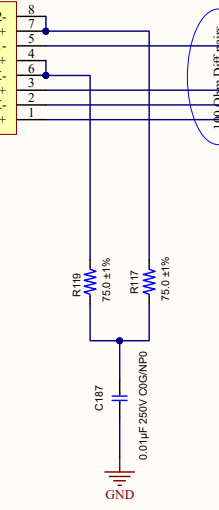
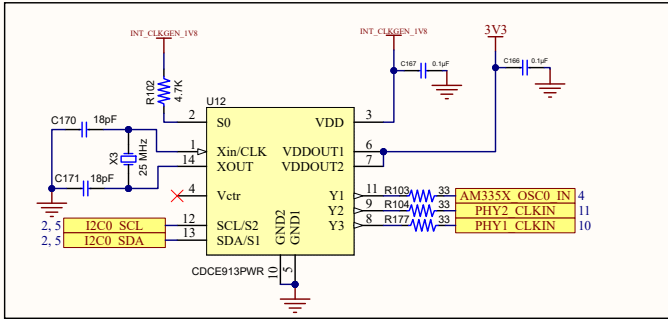
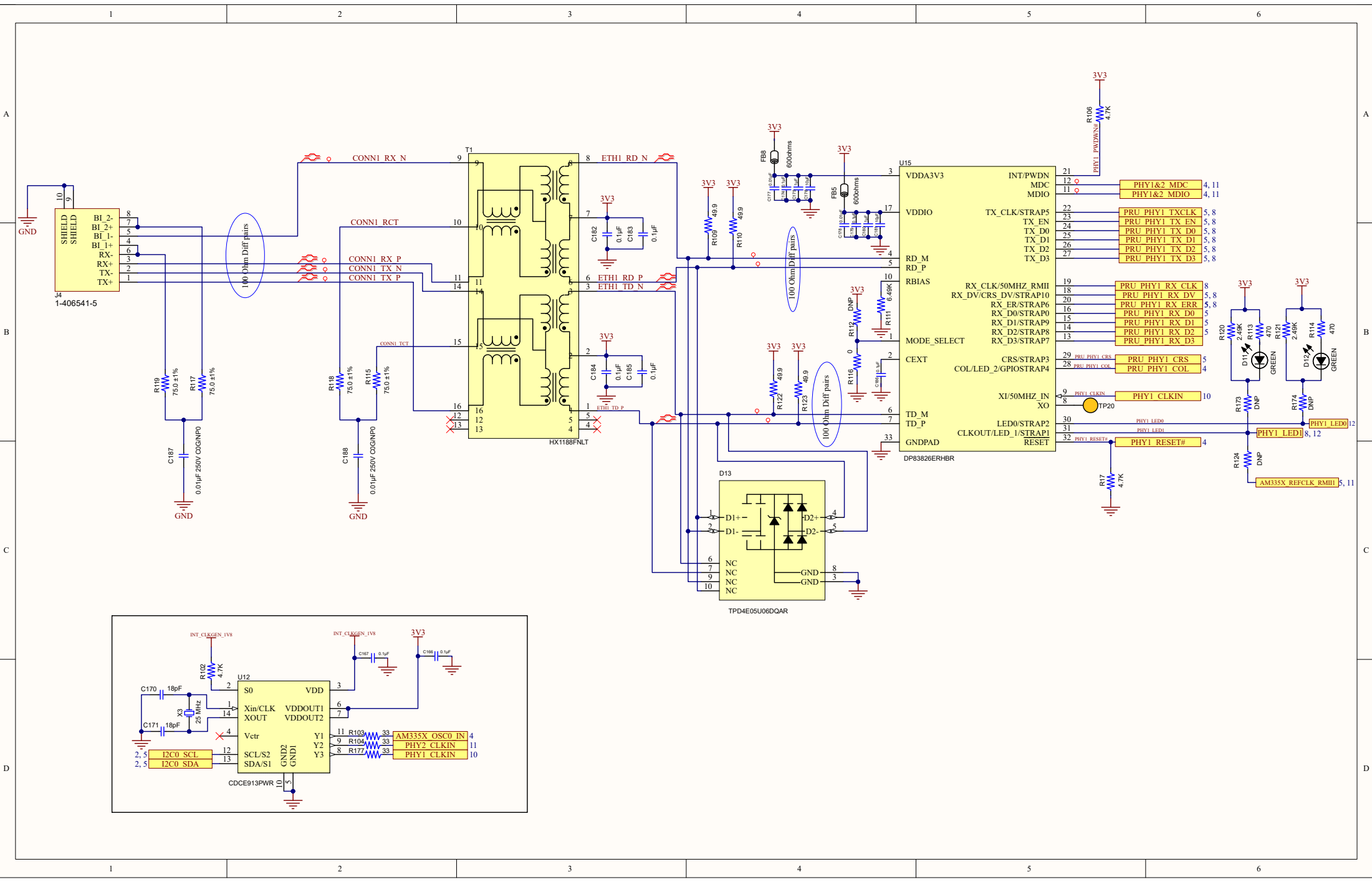
C

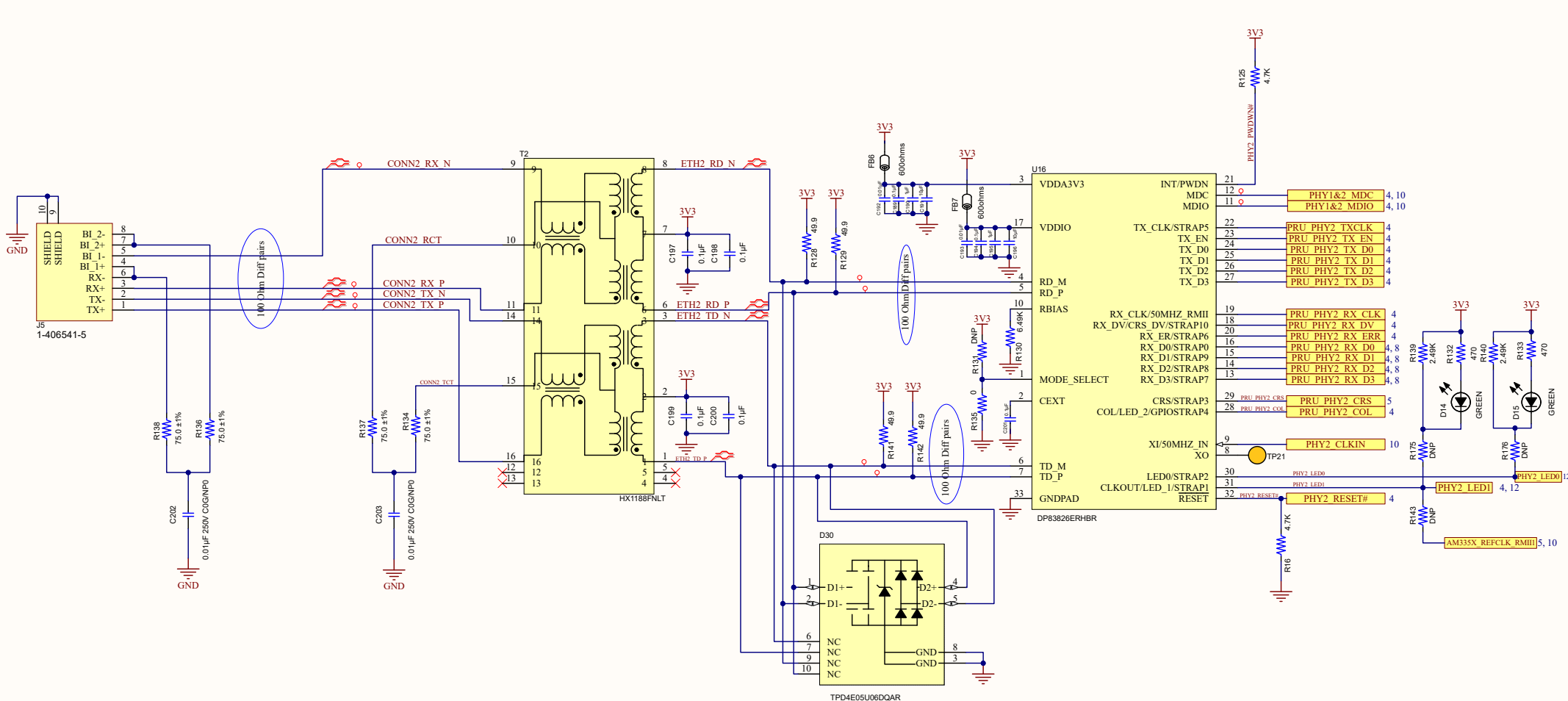
D

D

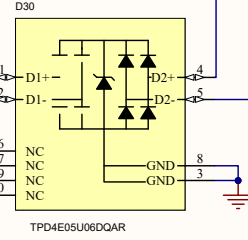
1 2 3 4 5 6







21	INT/PWDN	PHY1&2 MDC	4, 10
12	MDC	PHY1&2 MDIO	4, 10
11	MDIO		
22	TX_CLK/STRAP5	PRU PHY2 TXCLK	4
23	TX_EN	PRU PHY2 TX EN	4
24	TX_D0	PRU PHY2 TX D0	4
25	TX_D1	PRU PHY2 TX D1	4
26	TX_D2	PRU PHY2 TX D2	4
27	TX_D3	PRU PHY2 TX D3	4
19	RX_CLK/50MHZ_RMII	PRU PHY2 RX CLK	4
18	RX_DV/CRS_DV/STRAP10	PRU PHY2 RX DV	4
20	RX_ER/STRAP6	PRU PHY2 RX ERR	4
16	RX_D0/STRAP0	PRU PHY2 RX D0	4, 8
15	RX_D1/STRAP9	PRU PHY2 RX D1	4, 8
14	RX_D2/STRAP8	PRU PHY2 RX D2	4, 8
13	RX_D3/STRAP7	PRU PHY2 RX D3	4, 8
29	CRS/STRAP3	PRU PHY2 CRS	5
28	COL/LED_2/GPIOSTRAP4	PRU PHY2 COL	4
9	XI/50MHZ_IN	PHY2 CLKIN	10
8	XO		
30	LED0/STRAP2	PHY2 LED0	4, 12
31	CLKOUT/LED_1/STRAP1	PHY2 LED1	4, 12
32	RESET	PHY2 RESET#	4



1 2 3 4 5 6

A B C D

10 9
SHIELD SHIELD
BI 2- 8
BI 2+ 7
BI 1- 4
BI 1+ 6
RX+ 3
TX- 2
TX+ 1

J5 1-406541-5

R138 75.0 ±1%
R138 75.0 ±1%
C202 0.01µF 250V COGNPPO
GND

R137 75.0 ±1%
R134 75.0 ±1%
C203 0.01µF 250V COGNPPO
GND

CONN2 RX N 9
CONN2 RCT 10
CONN2 RX P 11
CONN2 TX N 14
CONN2 TX P 15
CONN2 TCT 15

T2

8 ETH2 RD N
7 3V3
C197 0.1µF
C198 0.1µF

6 ETH2 RD P
3 ETH2 TD N
5
16 16
12 12
13 13

HX1188FNL

3V3
R128 49.9
R129 49.9
100 Ohm Diff pairs

3V3
R141 49.9
R142 49.9
100 Ohm Diff pairs

3V3
R143 DNP
R139 2.49K
R132 470
R140 2.49K
R133 470
R175 DNP
R176 DNP
R177 4.7K
R15 4.7K

3V3
FB8 600ohms
C195 0.01µF
C196 100nF
C197 100nF
3V3
FB7 600ohms
C200 0.01µF
C201 100nF

U16 DP83826ERHBR

VDDA3V3
VDDIO
RD_M
RD_P
RBIAS
MODE_SELECT
CEXT
TD_M
TD_P
GNDPAD

21
12
11
22
23
24
25
26
27
19
18
20
16
15
14
13
29
28
9
8
30
31
32

PHY2_PWDN# 4.7K
3V3

PHY1&2 MDC 4, 10
PHY1&2 MDIO 4, 10
PRU PHY2 TXCLK 4
PRU PHY2 TX EN 4
PRU PHY2 TX D0 4
PRU PHY2 TX D1 4
PRU PHY2 TX D2 4
PRU PHY2 TX D3 4
PRU PHY2 RX CLK 4
PRU PHY2 RX DV 4
PRU PHY2 RX ERR 4
PRU PHY2 RX D0 4, 8
PRU PHY2 RX D1 4, 8
PRU PHY2 RX D2 4, 8
PRU PHY2 RX D3 4, 8
PRU PHY2 CRS 5
PRU PHY2 COL 4
PHY2 CLKIN 10
PHY2 LED0 4, 12
PHY2 LED1 4, 12
PHY2 RESET# 4
AM335X_REFCLK_RMII 5, 10

D14 GREEN
D15 GREEN

TP21

D30 TPD4E05U06DOAR
D1+ 1
D1- 2
D2+ 3
D2- 4
GND 5, 6, 7, 10
GND 8, 9

Real Time Ethernet LEDs

