

ARM MPU AM437X Industrial EVM  
ZDN Package

- See the Hardware User Guide for board details
- See the Errata Document for design Issues
- See the PCB Build Specification for PCB Details



Catalog  
Processors

Texas Instruments, Inc.

Catalog Processors Business Unit  
12500 TI Blvd  
Dallas, TX 75243

TEXAS  
INSTRUMENTS

AM437x Industrial EVM

Final

Size C

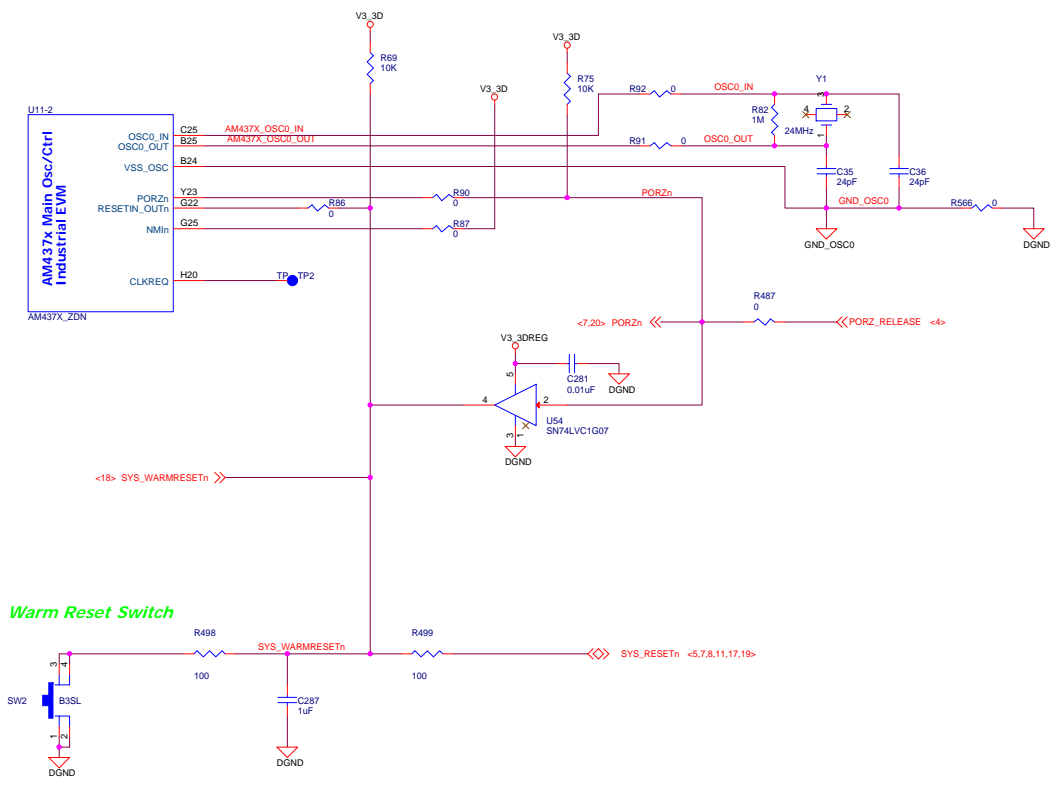
Document Number am437x\_industrial\_evm\_3k0008.dsn

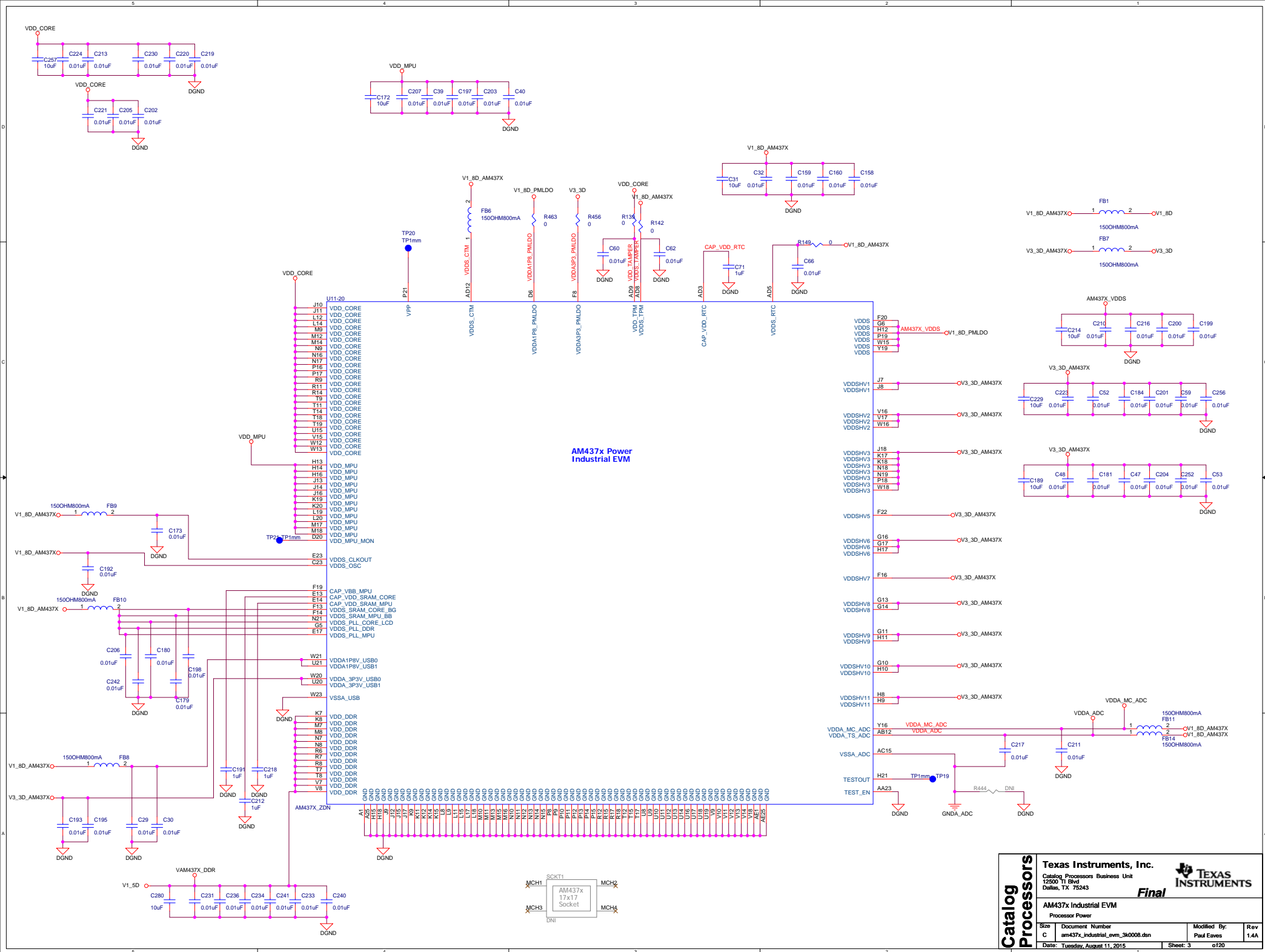
Modified By: Paul Eaves

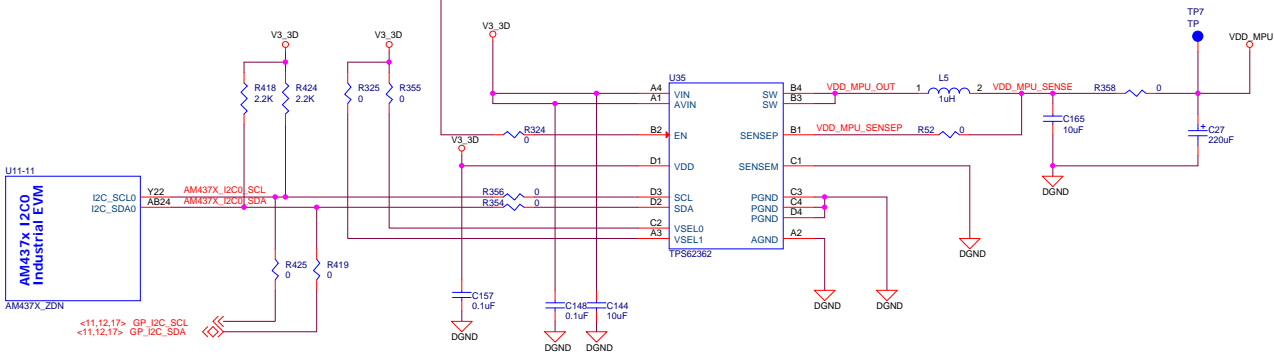
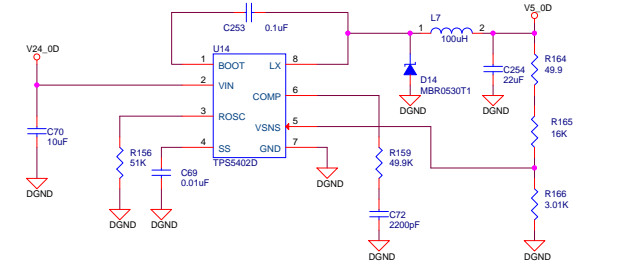
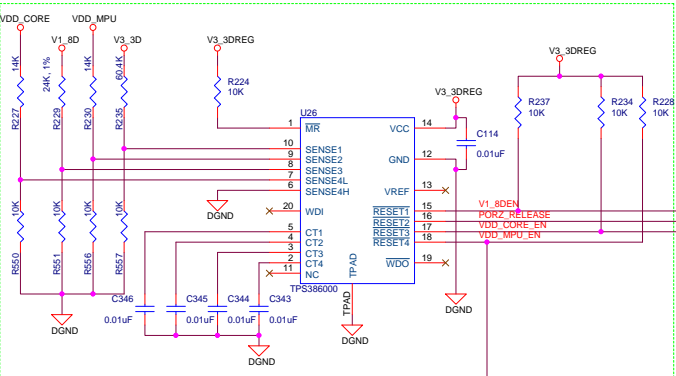
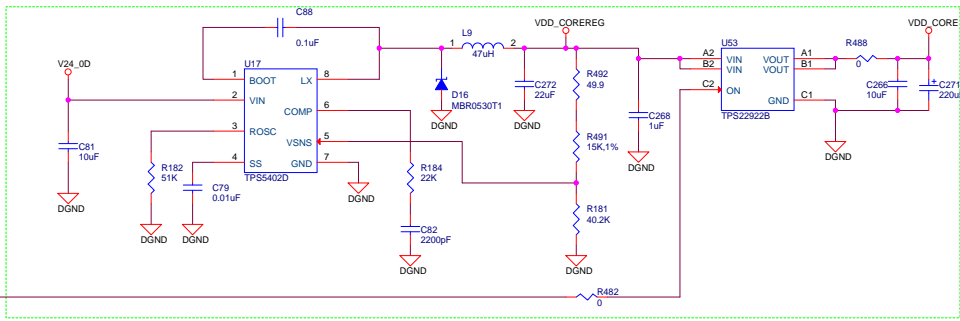
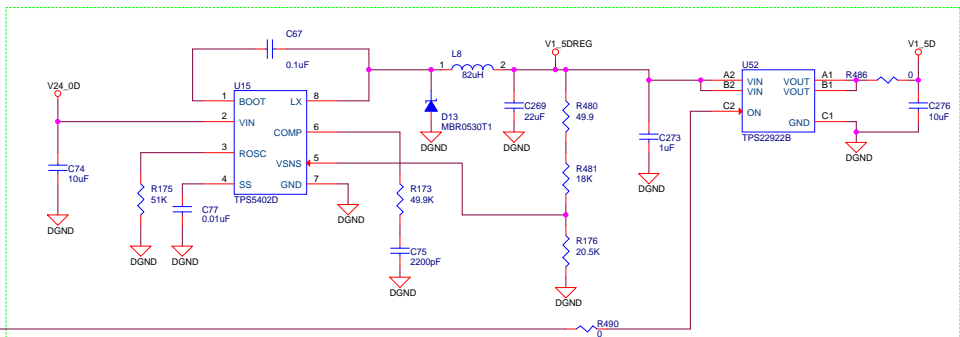
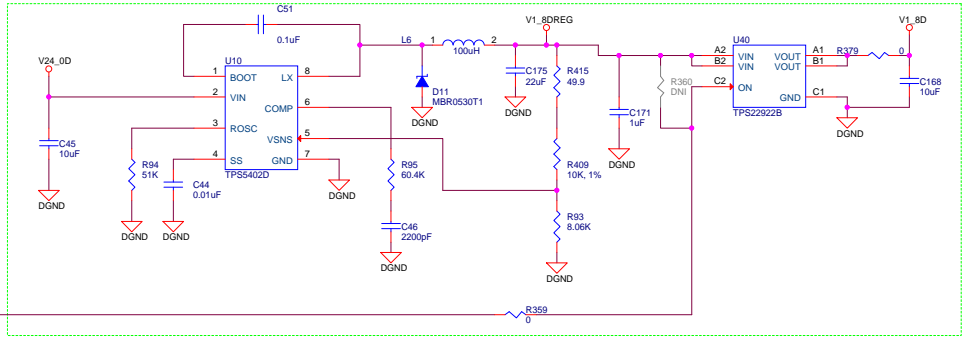
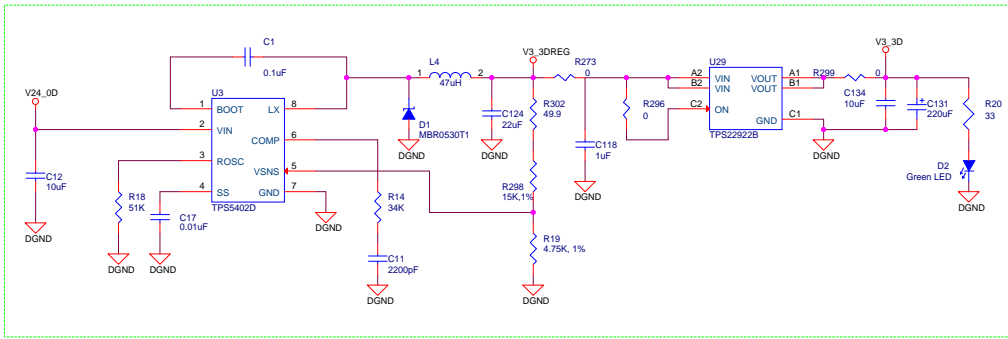
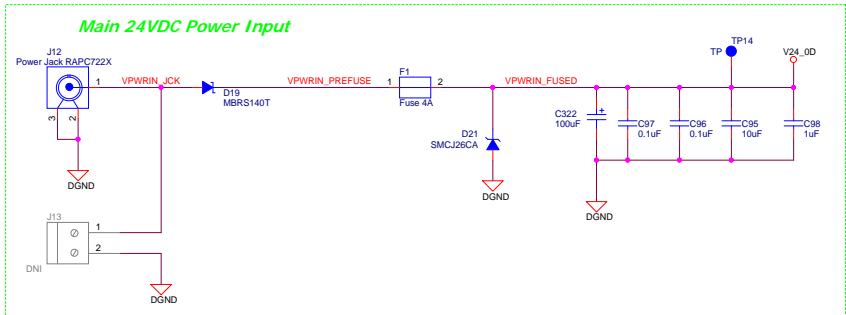
Rev 1.4A

Date: Tuesday, August 11, 2015

Sheet: 1 of 20







## Catalog Processors

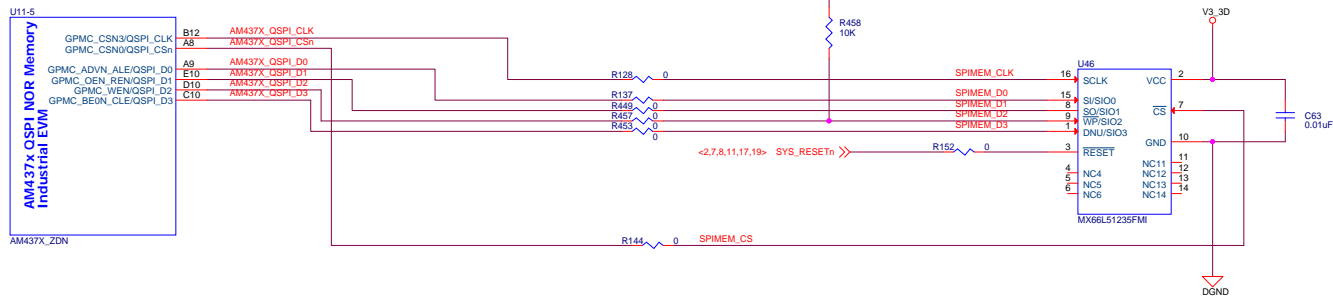
**Texas Instruments, Inc.**  
 Catalog Processors Business Unit  
 12500 TI Blvd  
 Dallas, TX 75243

**Final**

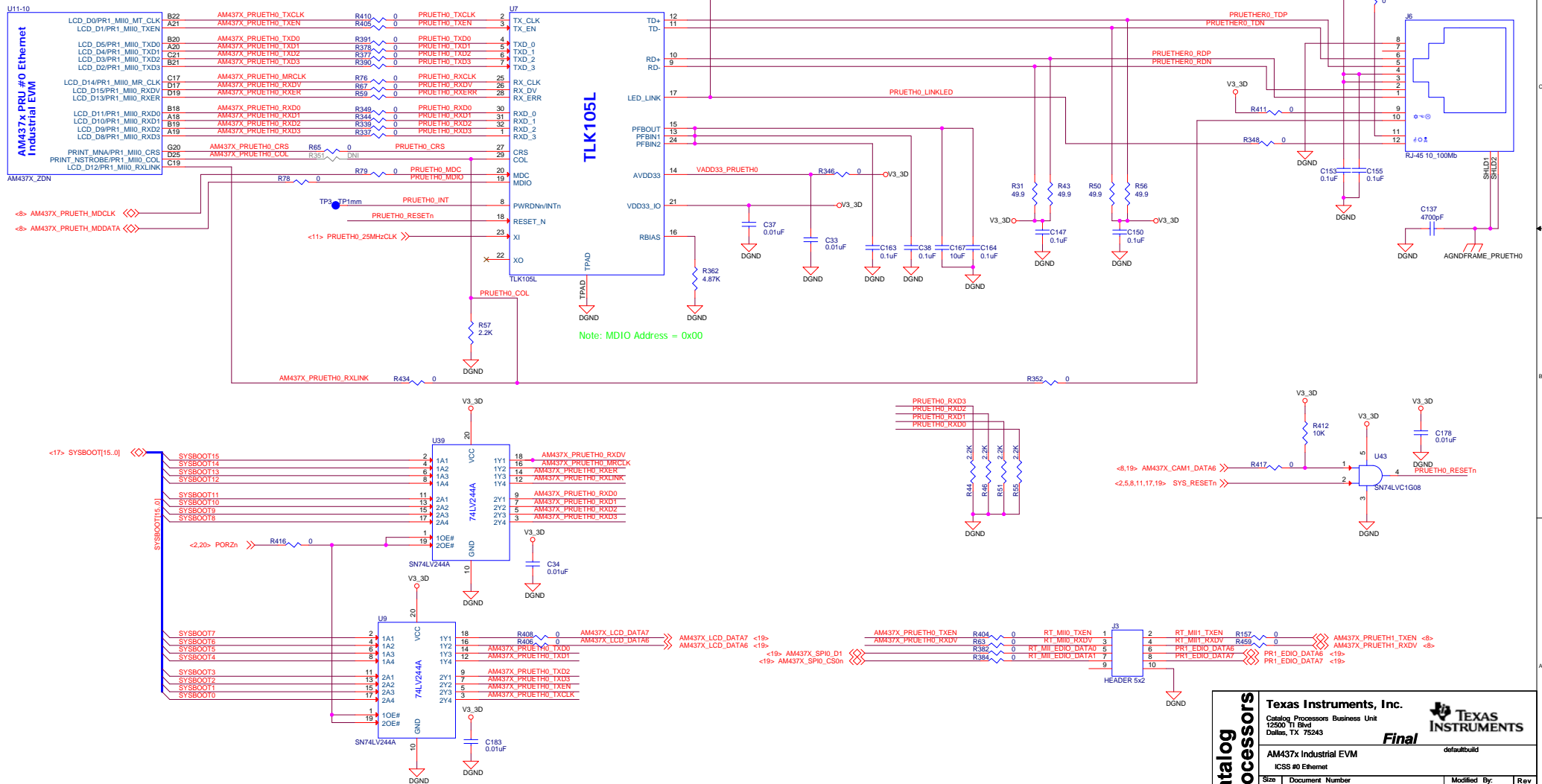
AM437x Industrial EVM

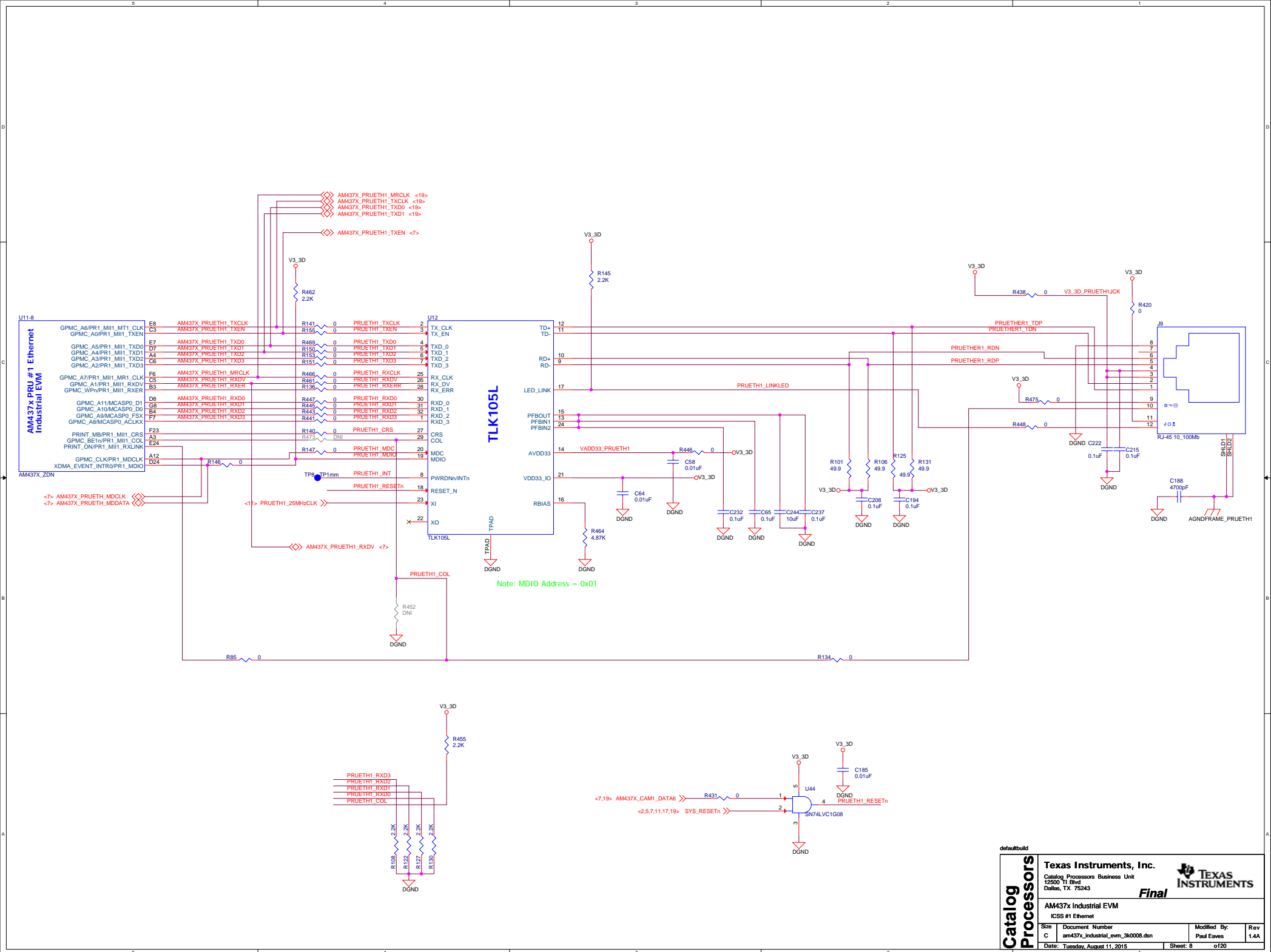
Size	Document Number	Modified By	Rev
C	am437x_industrial_evm_3k0008.dsn	Paul Eaves	1.4A

Date: Tuesday, August 11, 2015 Sheet: 4 of 20

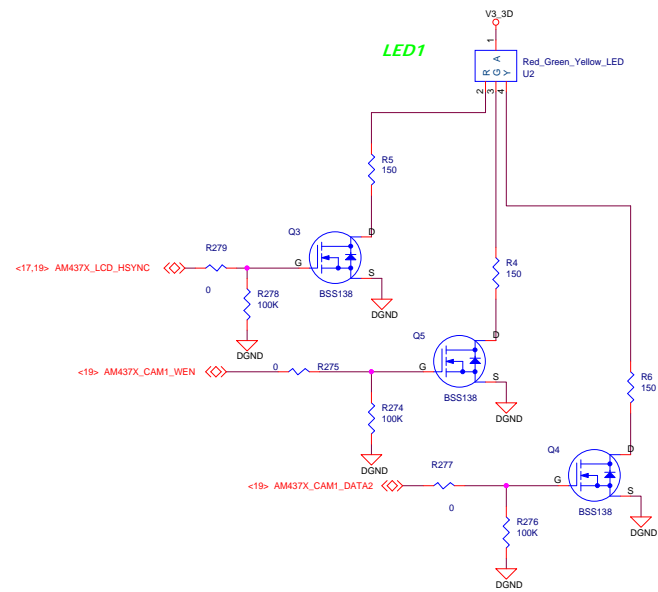




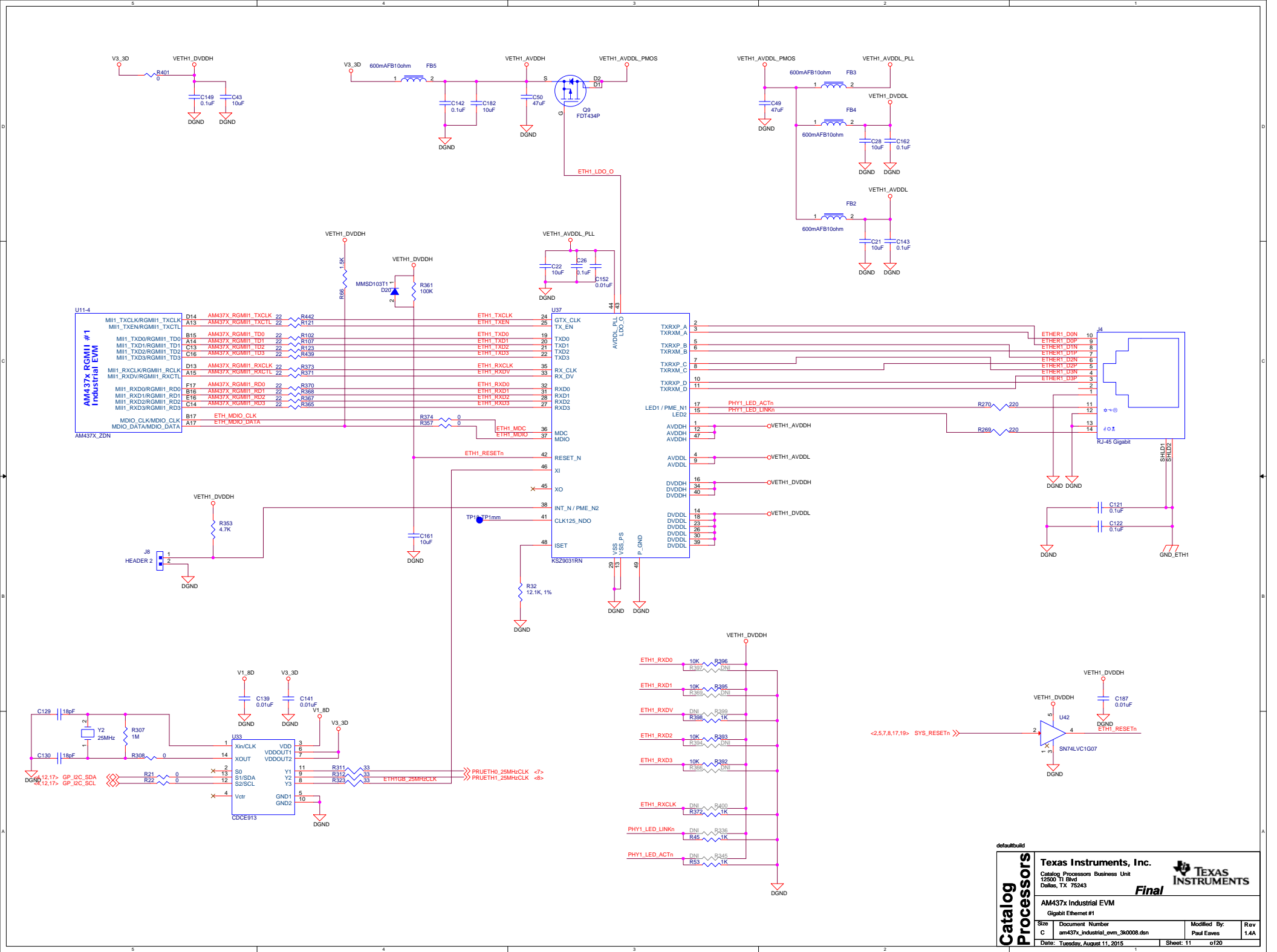


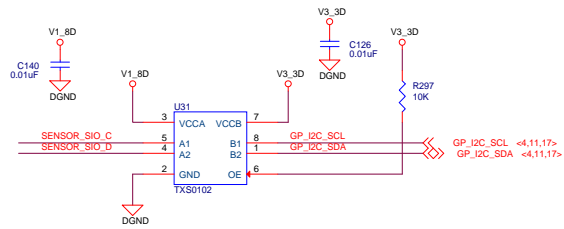




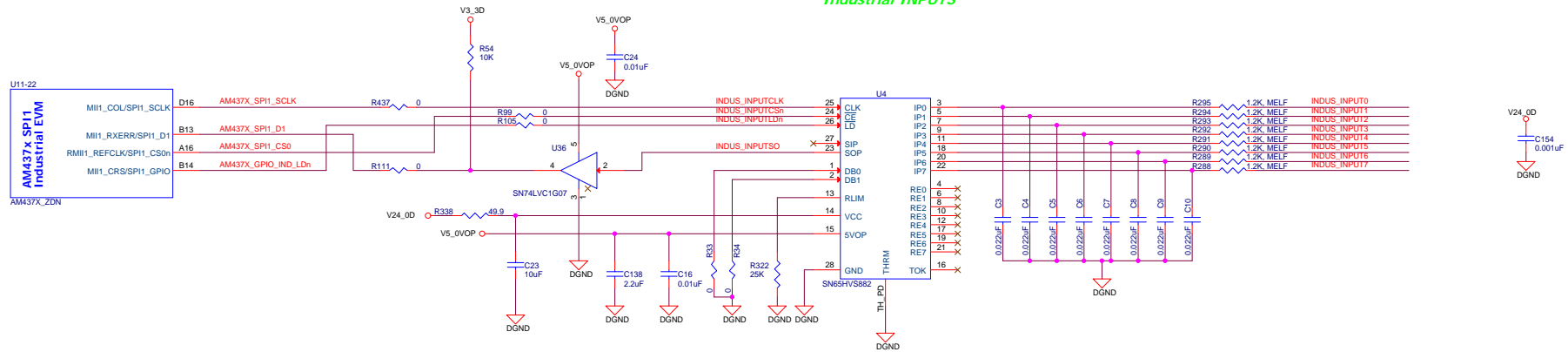




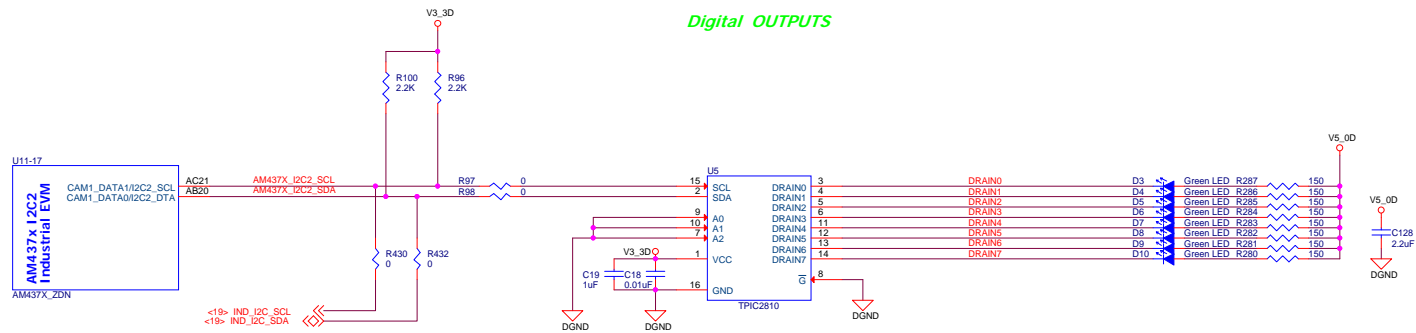




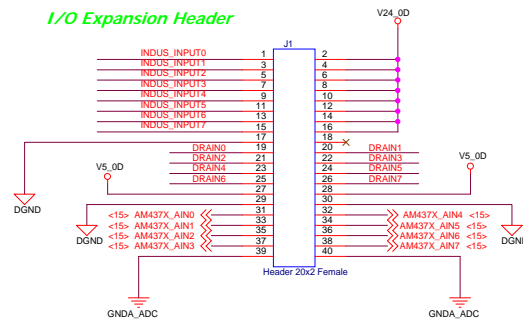
## Industrial INPUTS

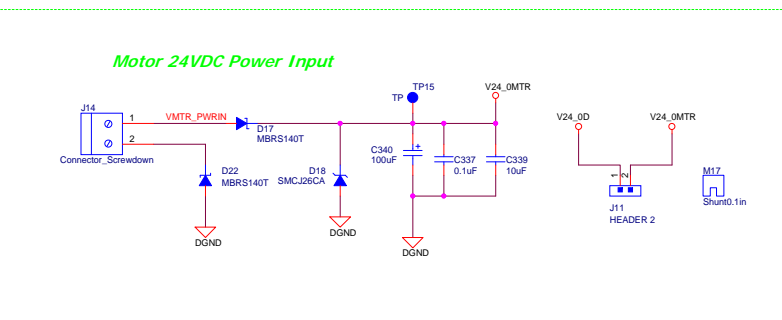
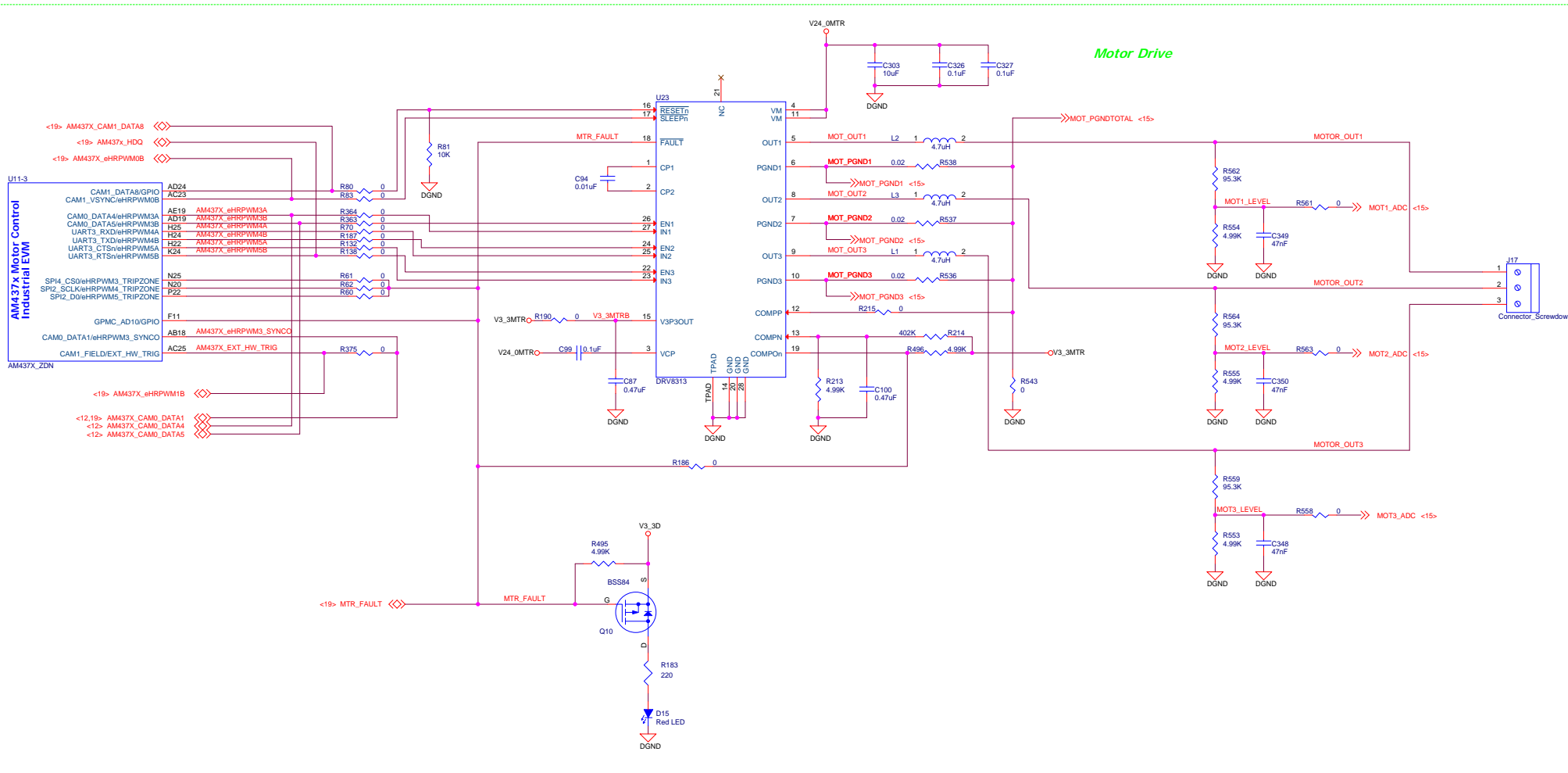


## Digital OUTPUTS

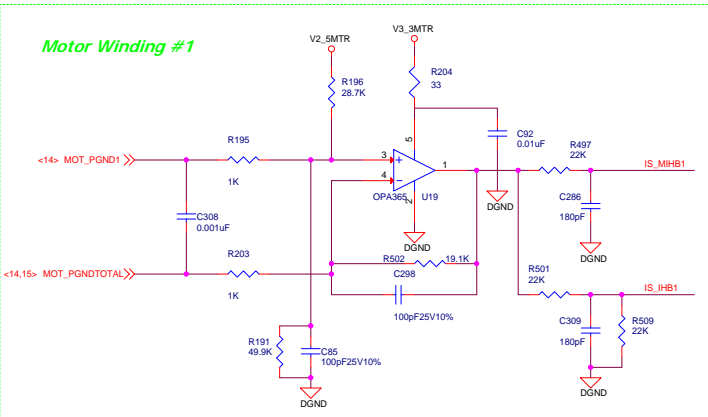


## I/O Expansion Header

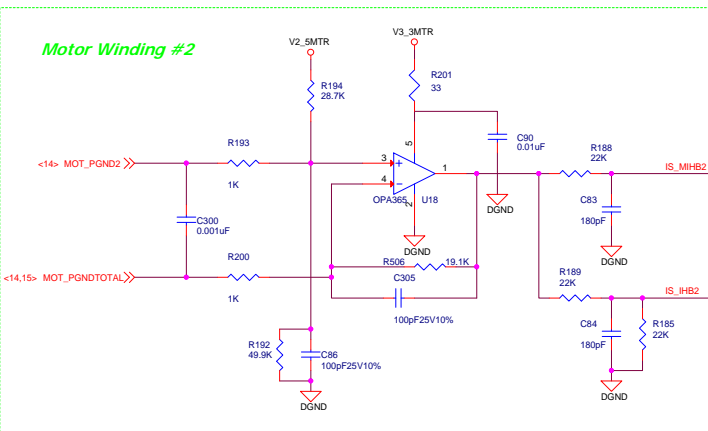




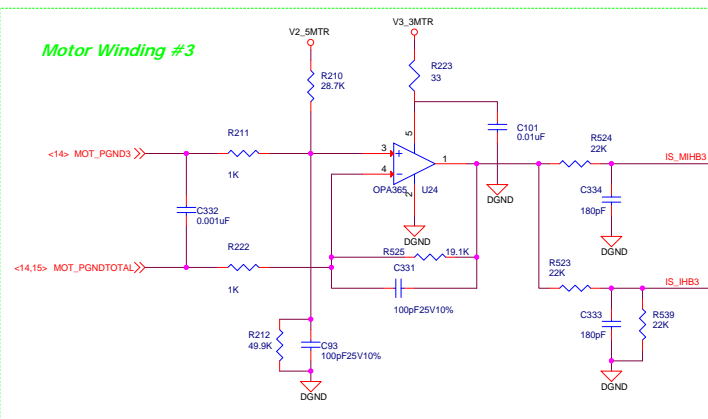
**Motor Winding #1**



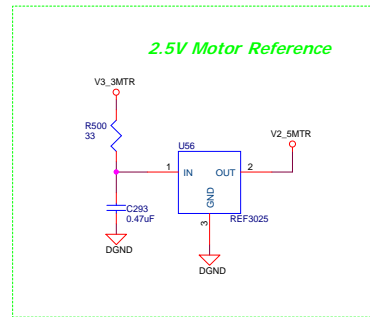
### Motor Winding #2



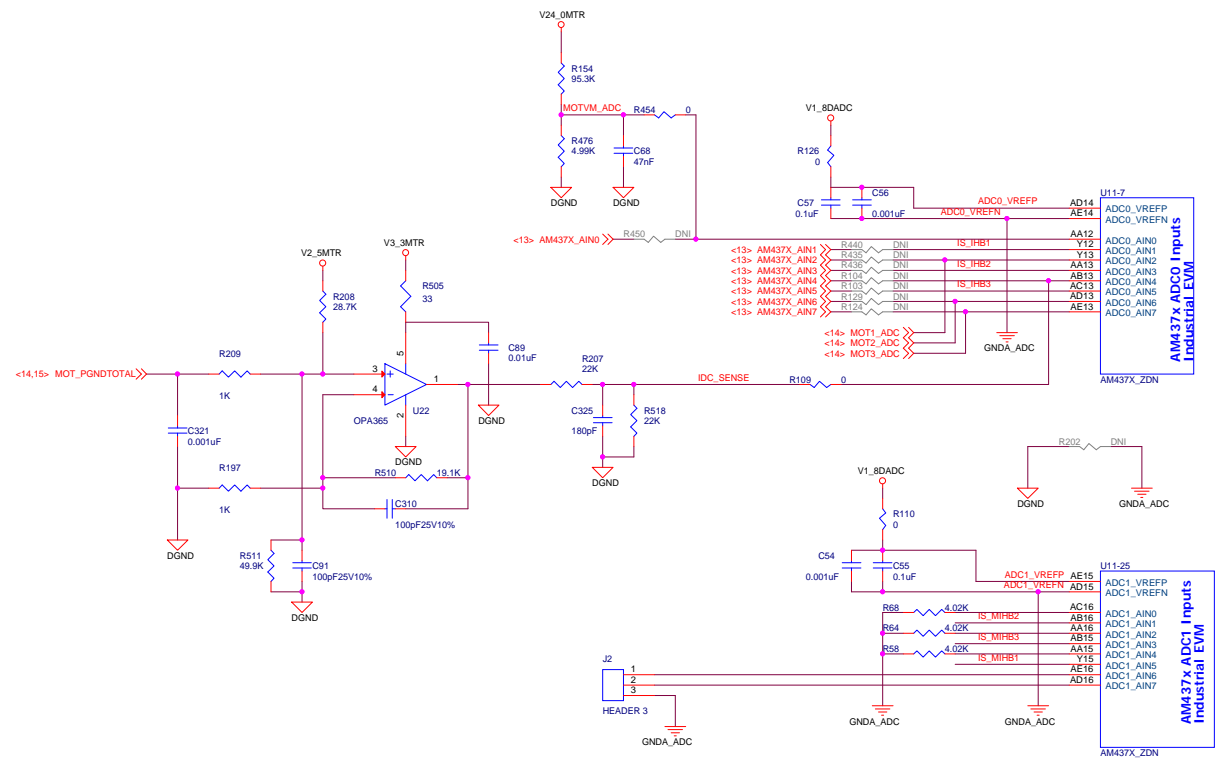
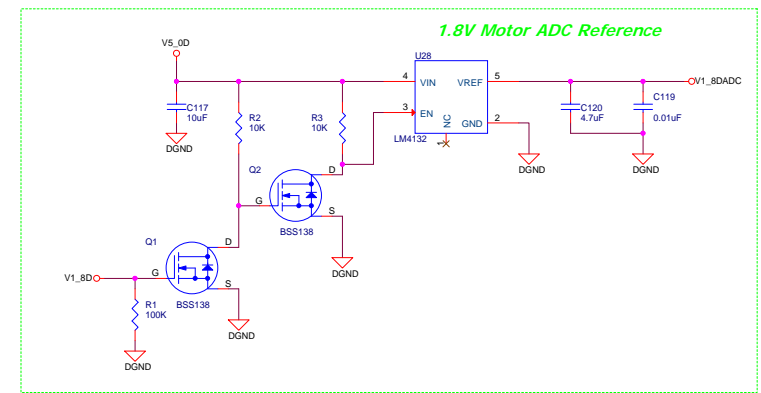
### Motor Winding #3

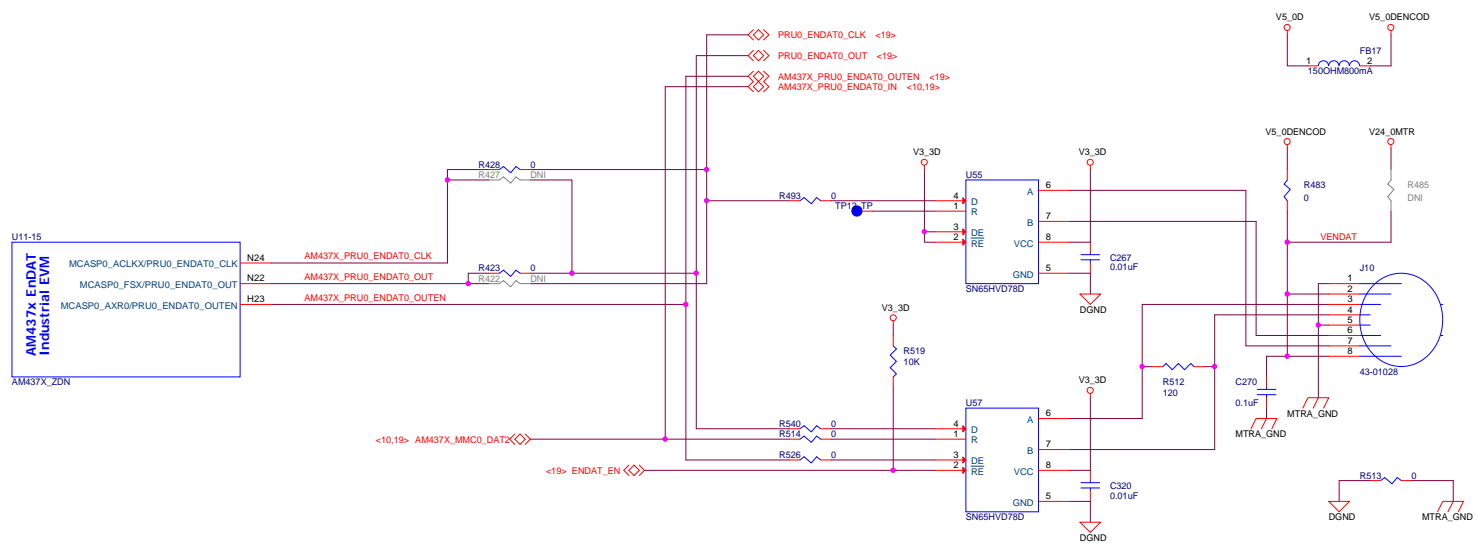


### 2.5V Motor Reference



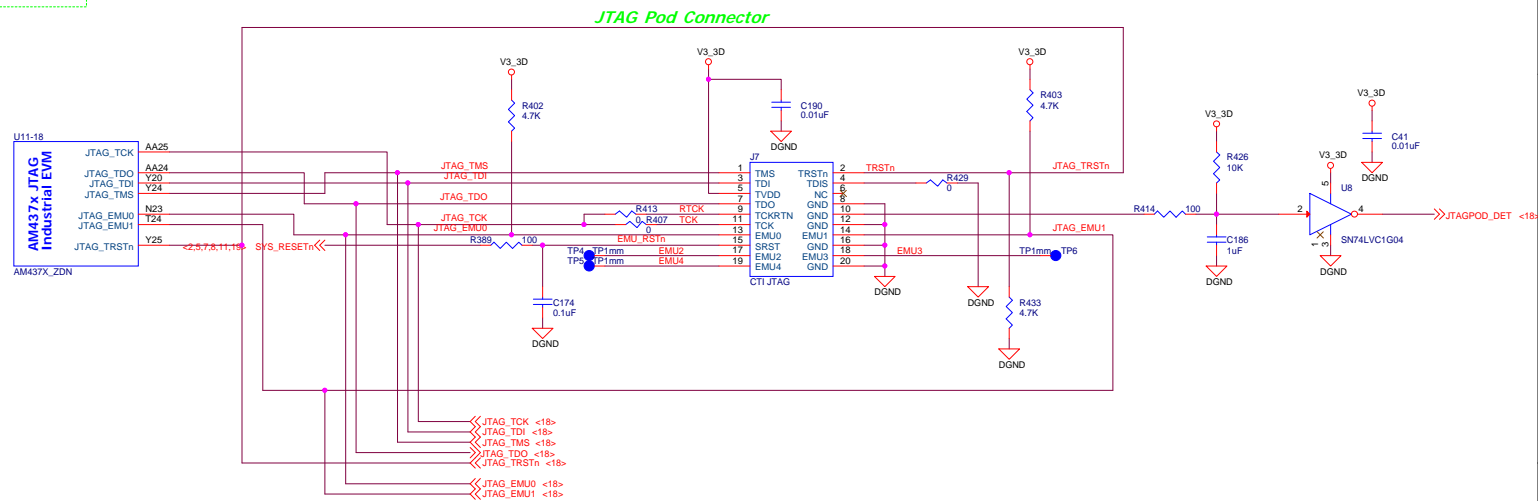
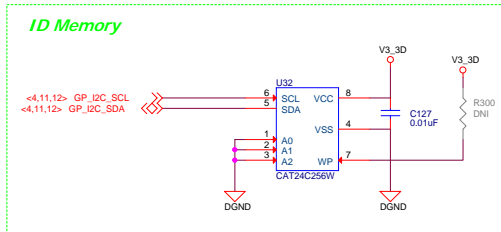
### 1.8V Motor ADC Reference





defaultbuild





**Boot Configuration**

