

ARM MPU AM335X Base Board ZCZ Package

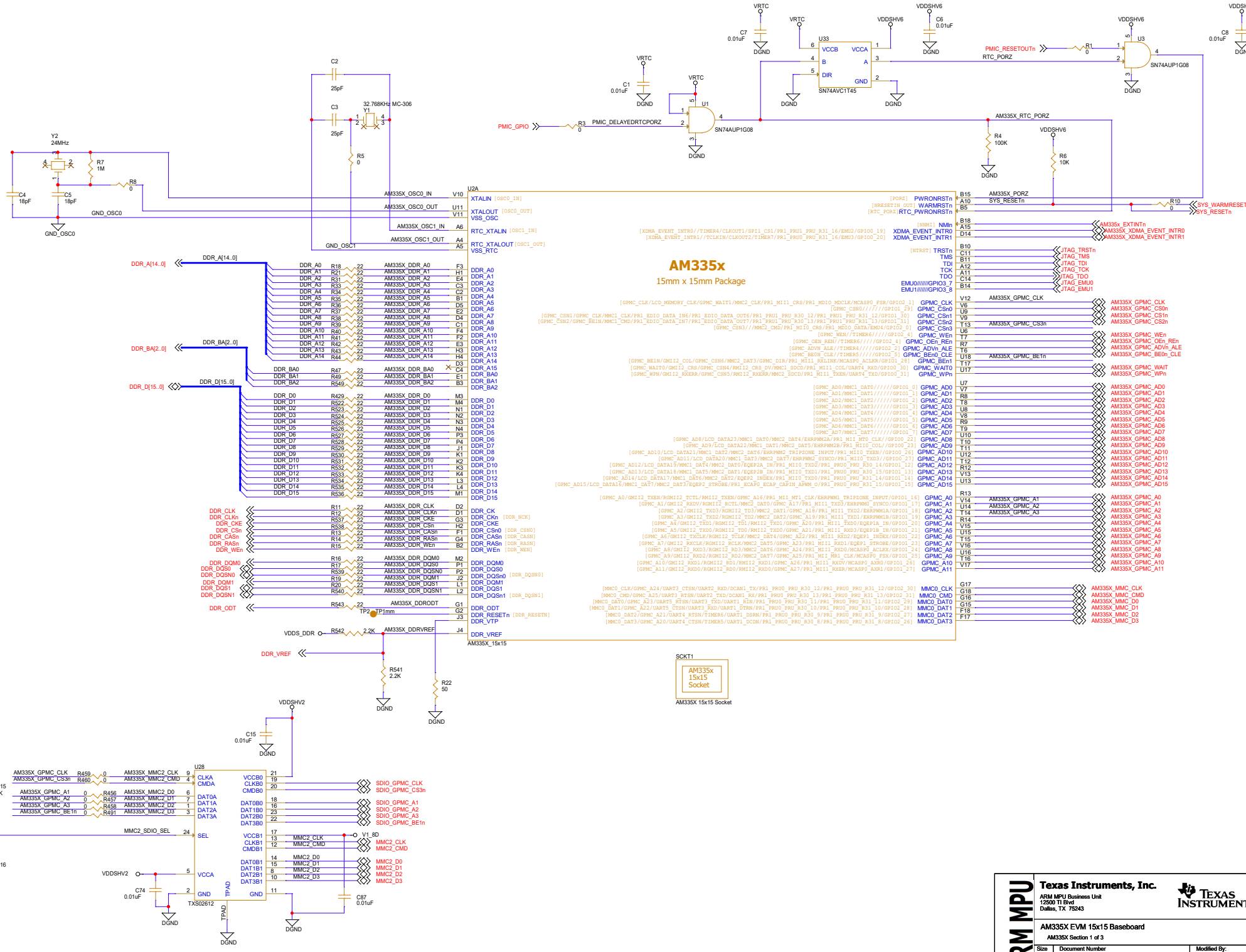
- See the Hardware User Guide for board details
- See the Hardware Implementation Document for design details
- See the PCB Build Specification for PCB Details

PCB1



AM335X 15x15 Base Board Bare PCB

ARM MPU	Texas Instruments, Inc.			
	ARM MPU Business Unit 12500 TI Blvd Dallas, TX 75243			
	AM335X EVM 15x15 Baseboard			
	Title Page			
Size	Document Number	Modified By:	Rev	
C	am335x_evm_zczbaseboard_3h0002_rev1_4u.dsn	Damon Donika	1.4A	
Date:	Friday, July 20, 2012	Sheet	1	of 15



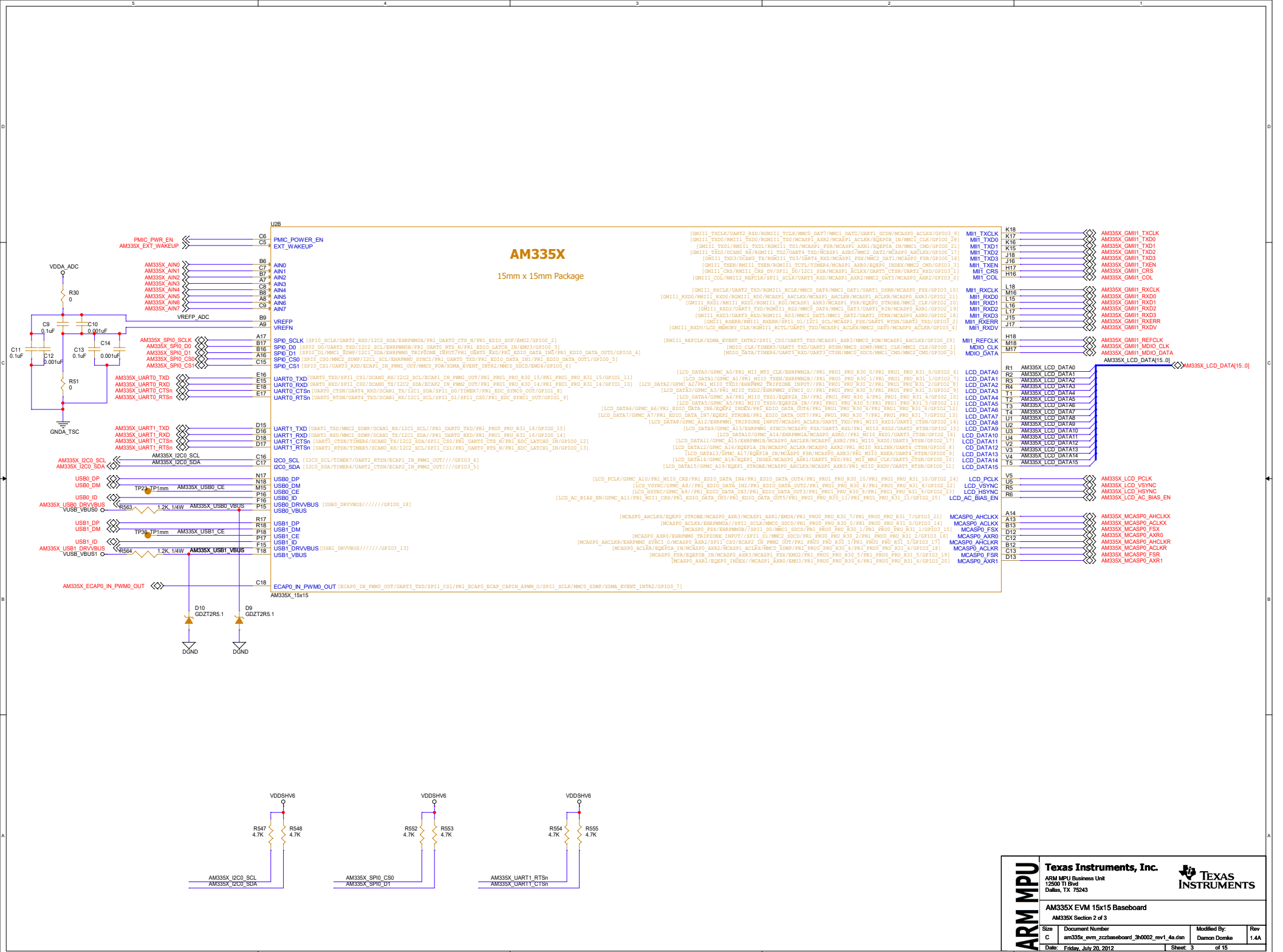
ARM MPU

Texas Instruments, Inc.
 ARM MPU Business Unit
 12500 TI Blvd
 Dallas, TX 75243

AM335x EVM 15x15 Baseboard
 AM335x Section 1 of 3

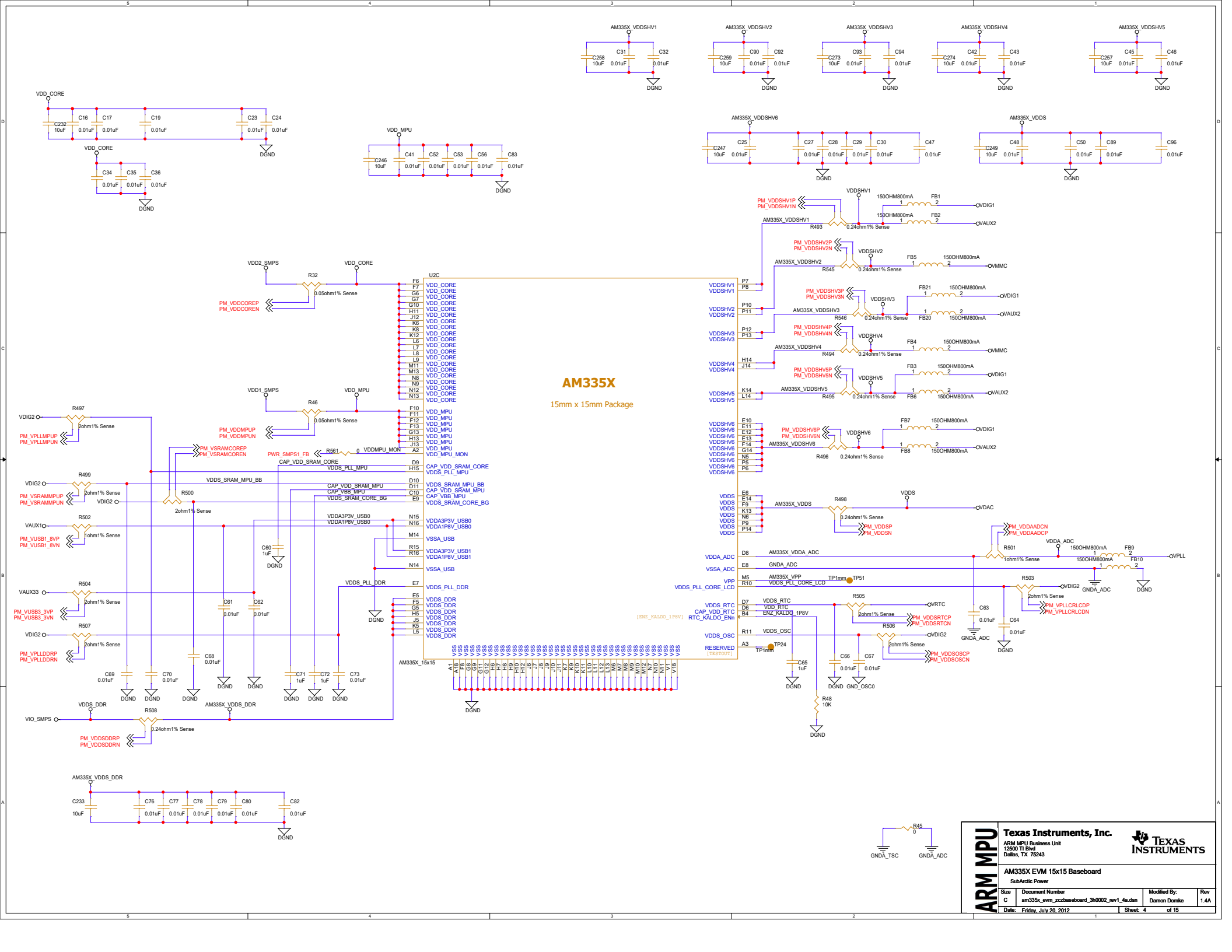
Size: C
 Document Number: am335x_evm_zcztbaseboard_3h0002_rev1_4u.dsn
 Modified By: Damon Donkai
 Date: Friday, July 20, 2012

Rev: 1.4A
 Sheet: 2 of 15



AM335X
15mm x 15mm Package

		Texas Instruments, Inc. ARM MPU Business Unit 12500 TI Blvd Dallas, TX 75243		
		AM335X EVM 15x15 Baseboard AM335X Section 2 of 3		
Size	Document Number	Modified By:	Rev	
C	am335x_evm_zc2baseboard_3h0002_rev1_4u.dsn	Damon Donk	1.4A	
Date:	Friday, July 20, 2012	Sheet: 3	of 15	



ARM MPU

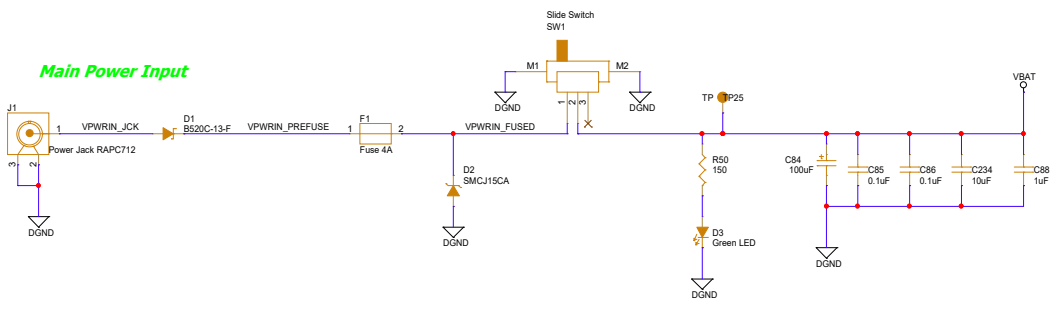
Texas Instruments, Inc.
 ARM MPU Business Unit
 12500 TI Blvd
 Dallas, TX 75243

AM335X EVM 15x15 Baseboard
 SubArctic Power

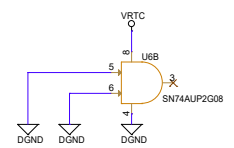
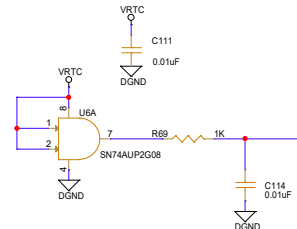
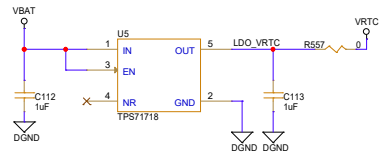
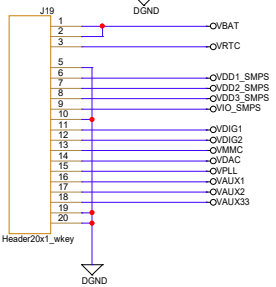
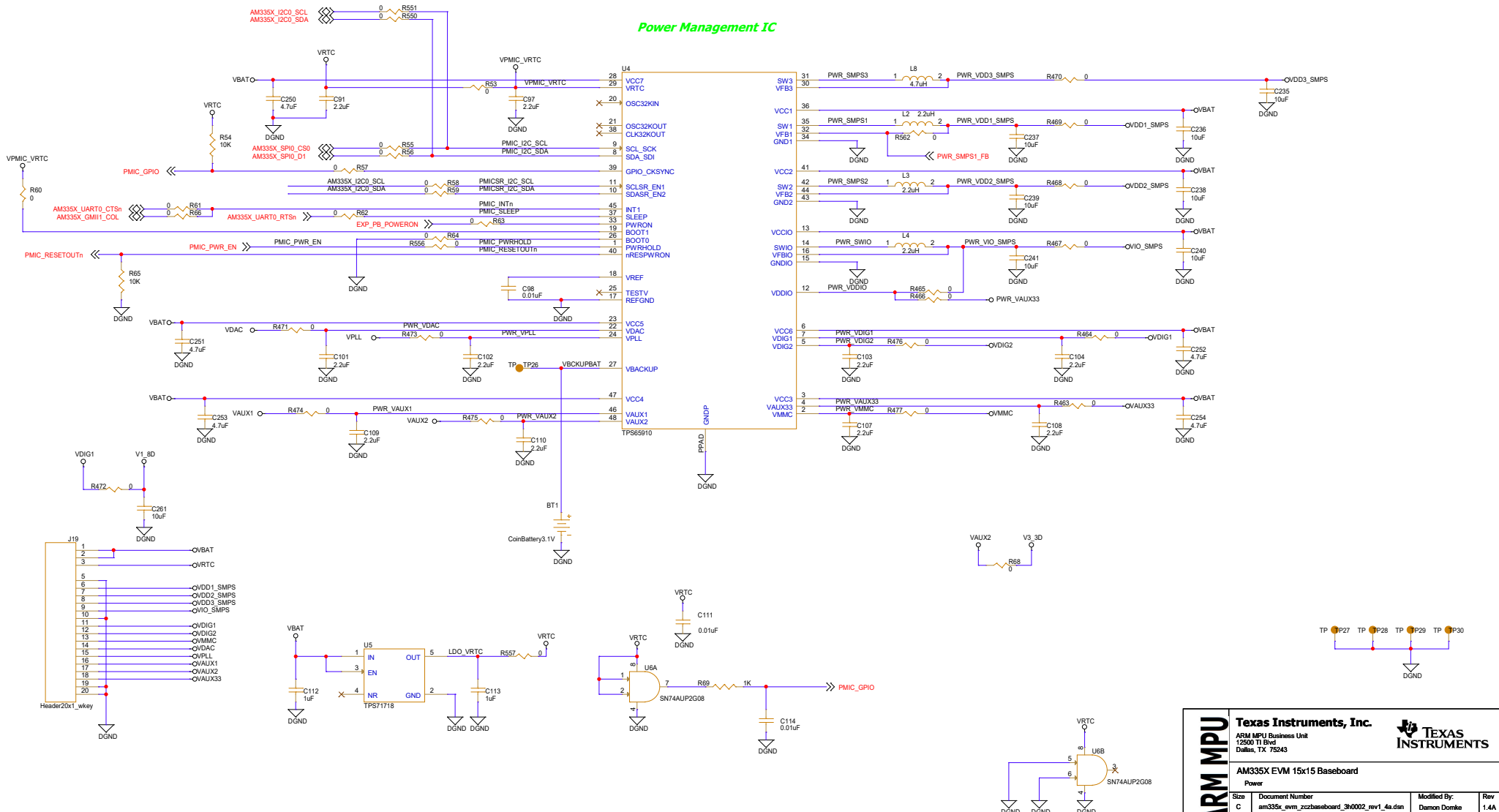
Size	Document Number	Modified By:	Rev
C	am335x_evm_zc2baseboard_3h0002_rev1_4u.dsn	Damon Donkic	1.4A

Date: Friday, July 20, 2012 Sheet: 4 of 15

Main Power Input



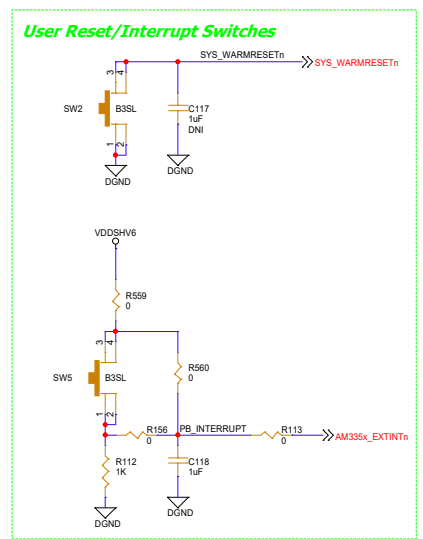
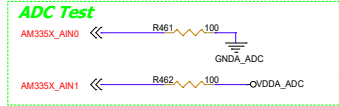
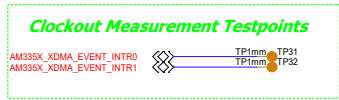
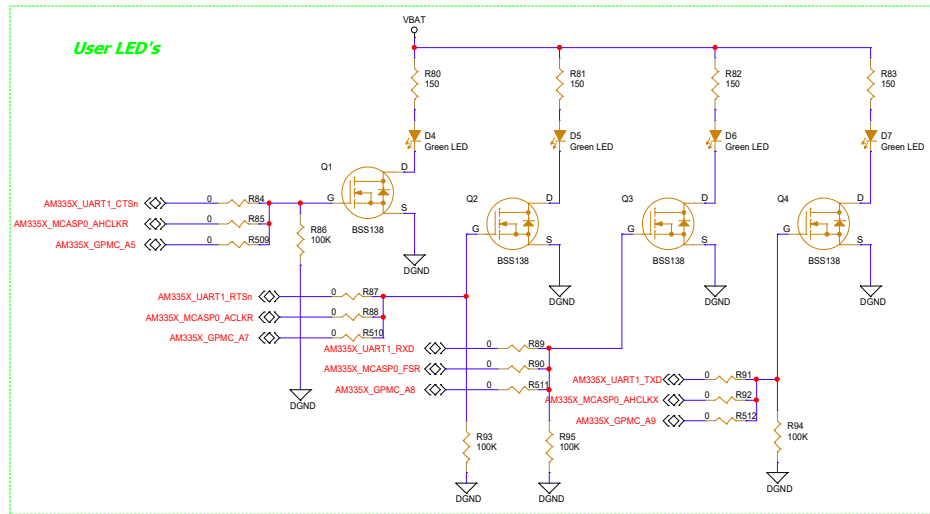
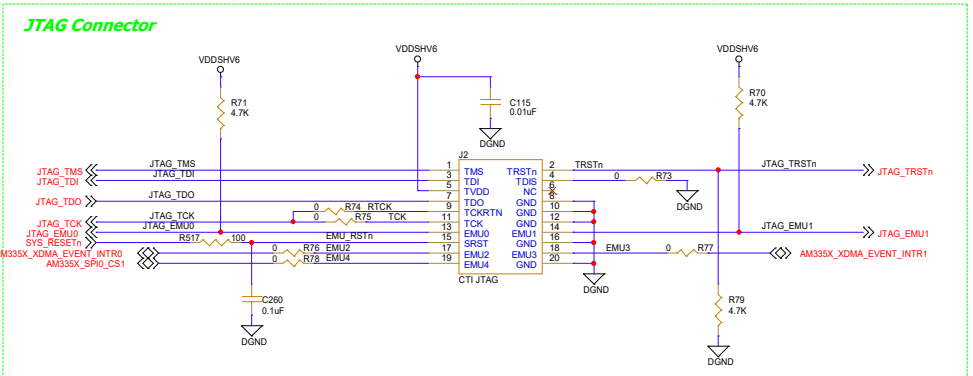
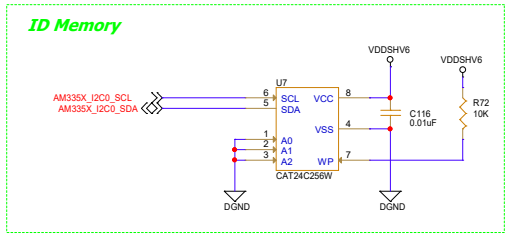
Power Management IC



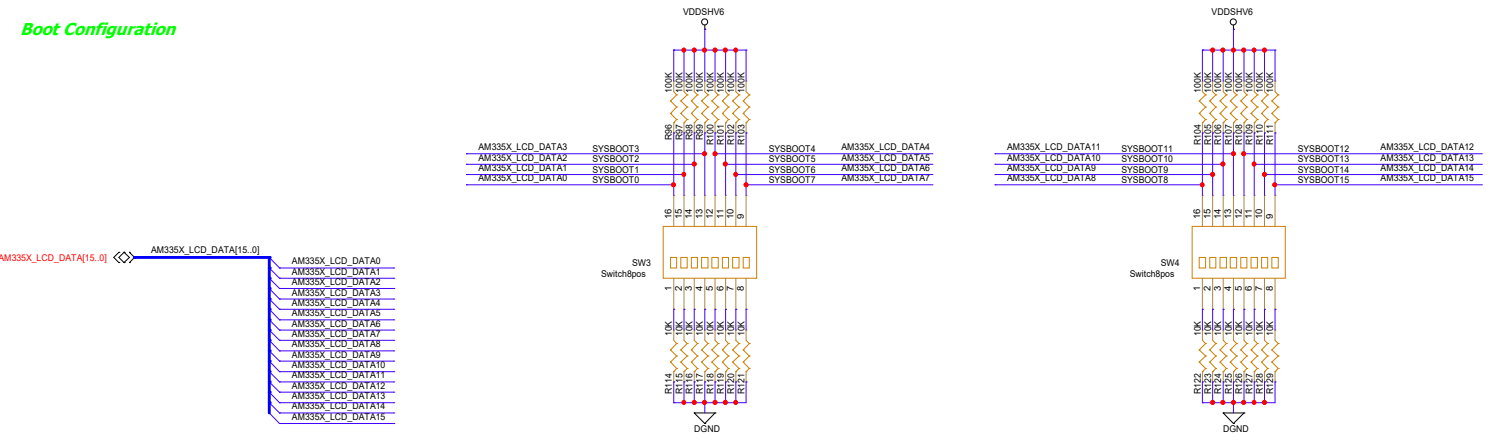
ARM MPU **Texas Instruments, Inc.**
 ARM MPU Business Unit
 12500 TI Blvd
 Dallas, TX 75243

AM335X EVM 15x15 Baseboard

Size	Document Number	Modified By:	Rev
C	am335x_evm_zccbaseboard_3h0002_rev1_4u.dsn	Damon Donike	1.4A
Date:	Friday, July 20, 2012	Sheet: 5	of 15

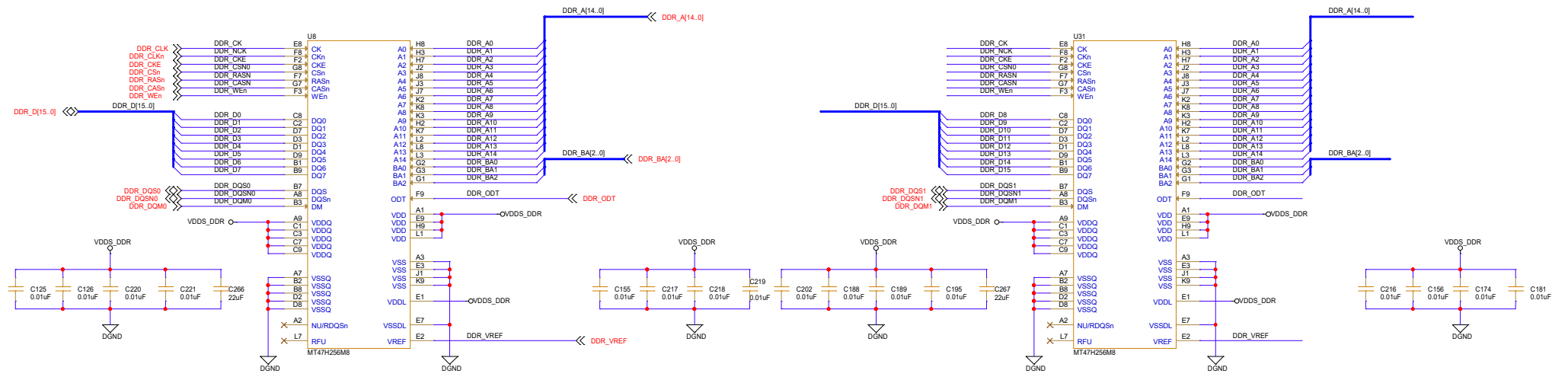


Boot Configuration

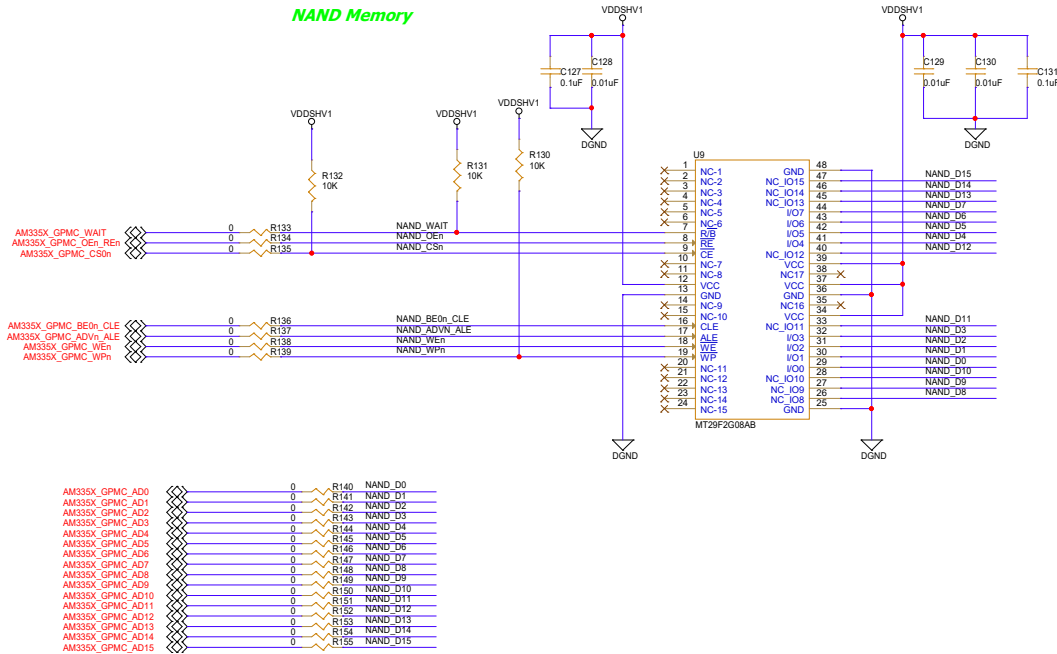


ARM MPU	Texas Instruments, Inc.			
	ARM MPU Business Unit			
	12500 TI Blvd			
	Dallas, TX 75243			
AM335X EVM 15x15 Baseboard				
Debug/Configuration				
Size	Document Number	Modified By:	Rev	
C	am335x_evm_zccbaseboard_3h0002_rev1_4u.dsn	Damon Donkai	1.4A	
Date:	Friday, July 20, 2012		Sheet 6	of 15

DDR2 SDRAM



NAND Memory



AM335X_GPMC_AD0	0	R140	NAND_D0
AM335X_GPMC_AD1	0	R141	NAND_D1
AM335X_GPMC_AD2	0	R142	NAND_D2
AM335X_GPMC_AD3	0	R143	NAND_D3
AM335X_GPMC_AD4	0	R144	NAND_D4
AM335X_GPMC_AD5	0	R145	NAND_D5
AM335X_GPMC_AD6	0	R146	NAND_D6
AM335X_GPMC_AD7	0	R147	NAND_D7
AM335X_GPMC_AD8	0	R148	NAND_D8
AM335X_GPMC_AD9	0	R149	NAND_D9
AM335X_GPMC_AD10	0	R150	NAND_D10
AM335X_GPMC_AD11	0	R151	NAND_D11
AM335X_GPMC_AD12	0	R152	NAND_D12
AM335X_GPMC_AD13	0	R153	NAND_D13
AM335X_GPMC_AD14	0	R154	NAND_D14
AM335X_GPMC_AD15	0	R155	NAND_D15

ARM MPU Texas Instruments, Inc.

ARM MPU Business Unit
12500 TI Blvd
Dallas, TX 75243

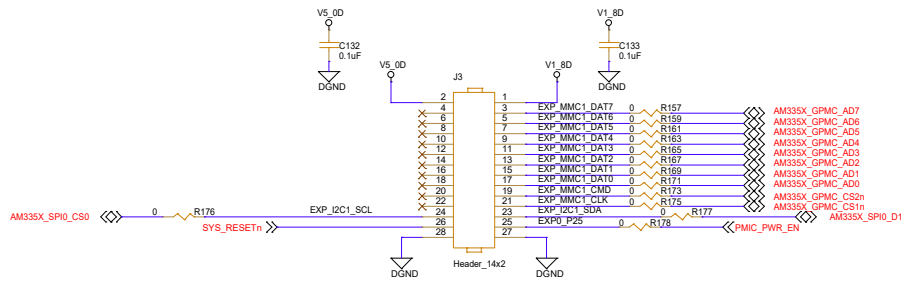
AM335X EVM 15x15 Baseboard

Memory

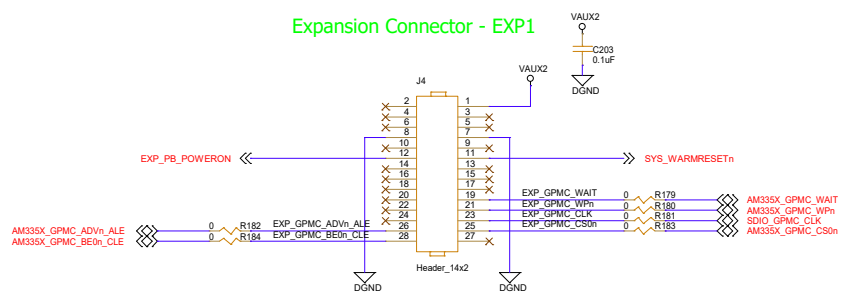
Size	Document Number	Modified By:	Rev
C	am335x_evm_zcbaseboard_3h0002_rev1_4u.dsn	Damon Donkai	1.4A

Date: Friday, July 20, 2012 Sheet 7 of 15

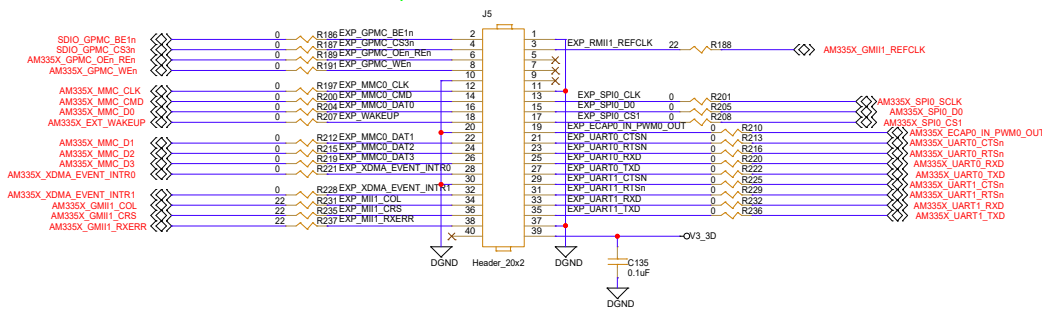
Expansion Connector - EXP0



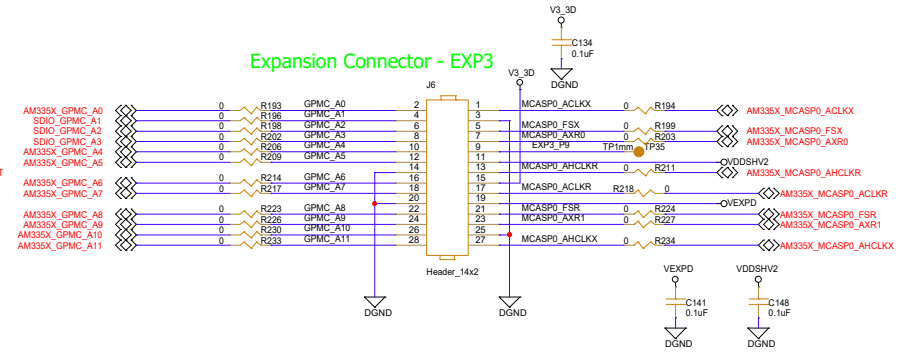
Expansion Connector - EXP1



Expansion Connector - EXP2

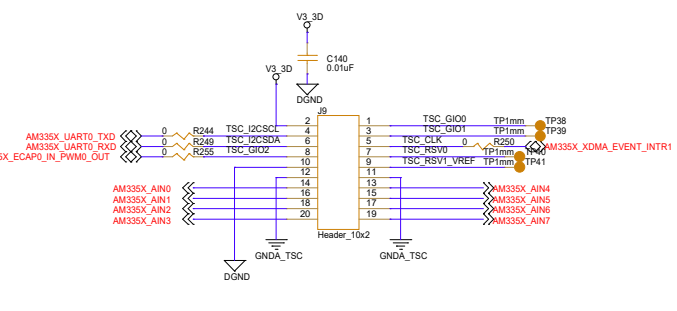
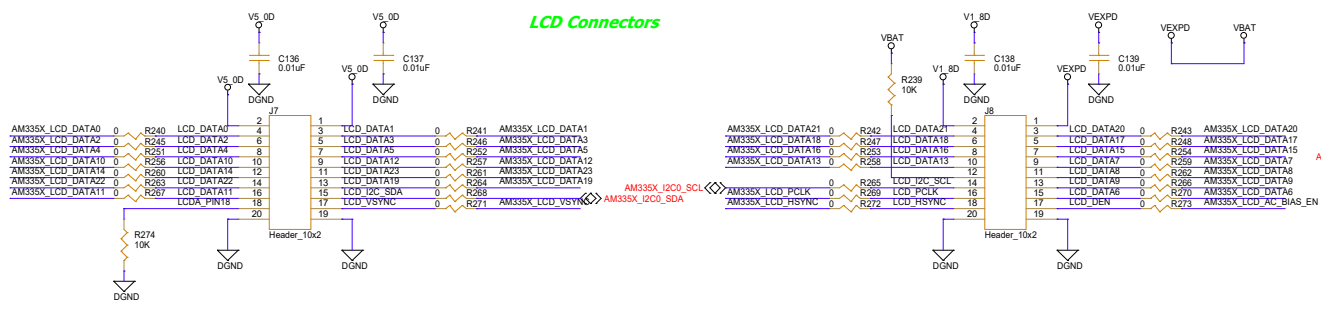


Expansion Connector - EXP3

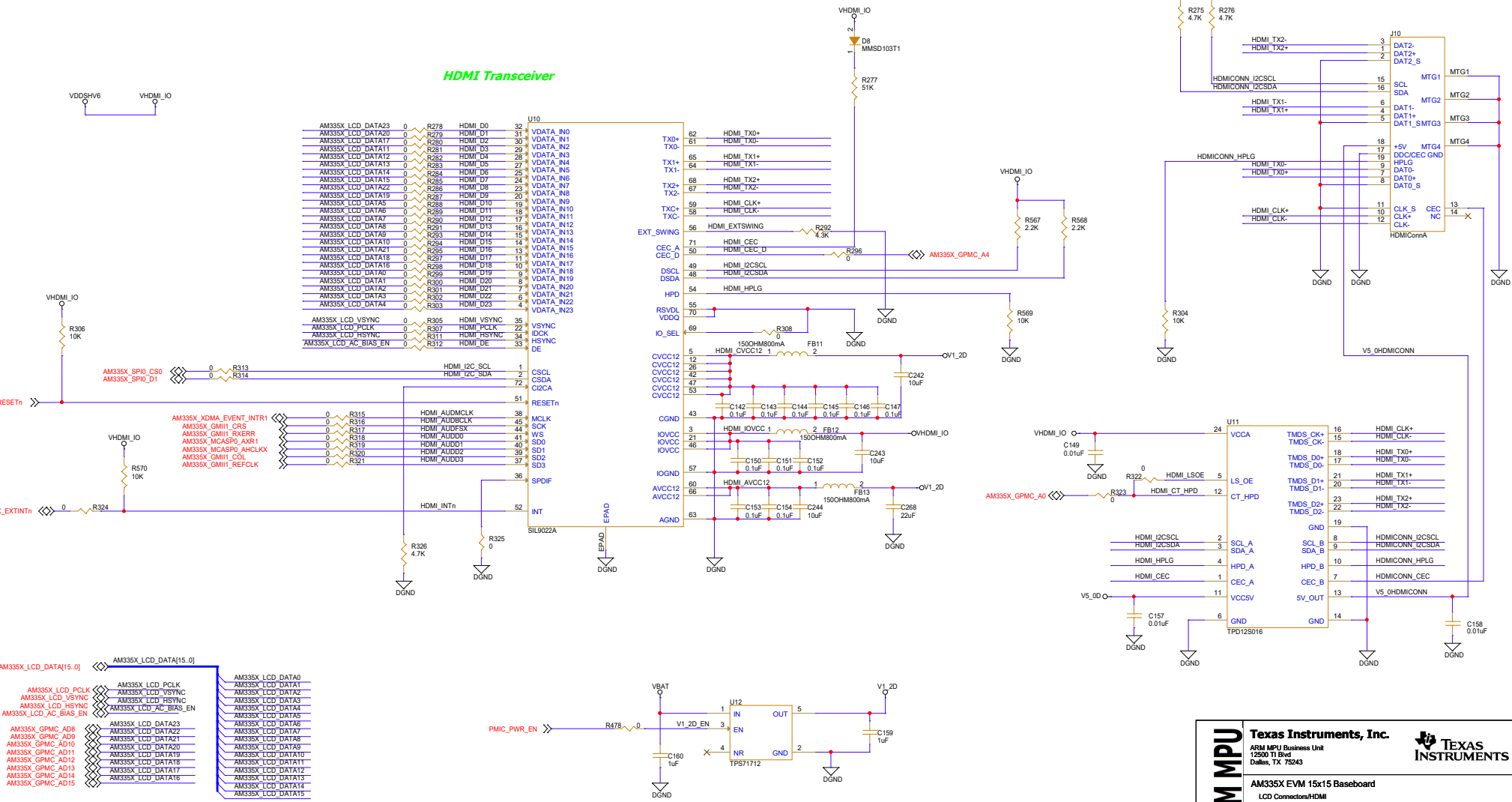


ARM MPU	Texas Instruments, Inc.			
	ARM MPU Business Unit 12500 TI Blvd Dallas, TX 75243			
	AM335X EVM 15x15 Baseboard			
	Expansion Connectors			
Size	Document Number	Modified By:	Rev	
C	am335x_evm_zcbaseboard_3h0002_rev1_4u.dsn	Damon Donike	1.4A	
Date:	Friday, July 20, 2012	Sheet: 6	of 15	

LCD Connectors



HDMI Transceiver



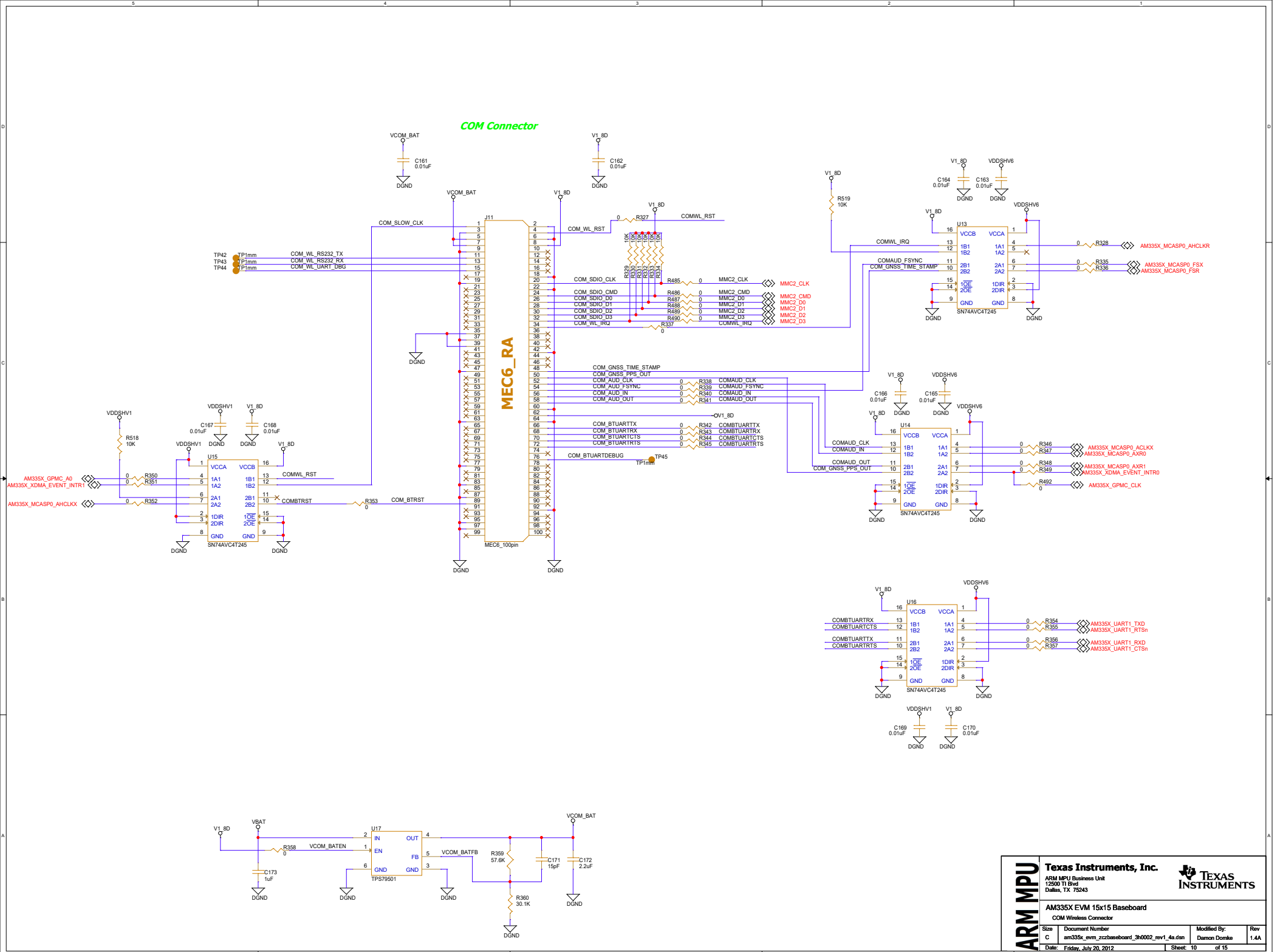
ARM MPU Texas Instruments, Inc.

ARM MPU Business Unit
12500 TI Blvd
Dallas, TX 75243

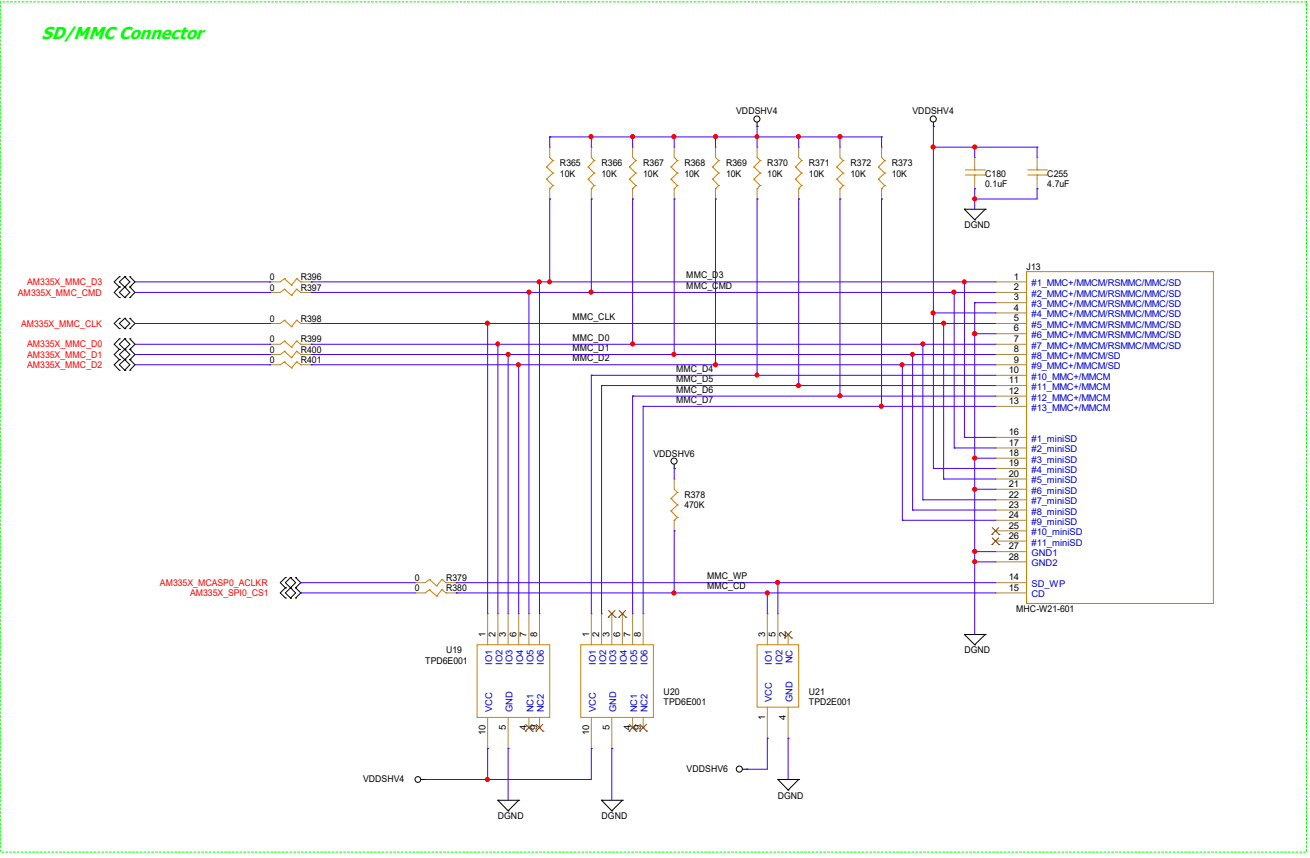
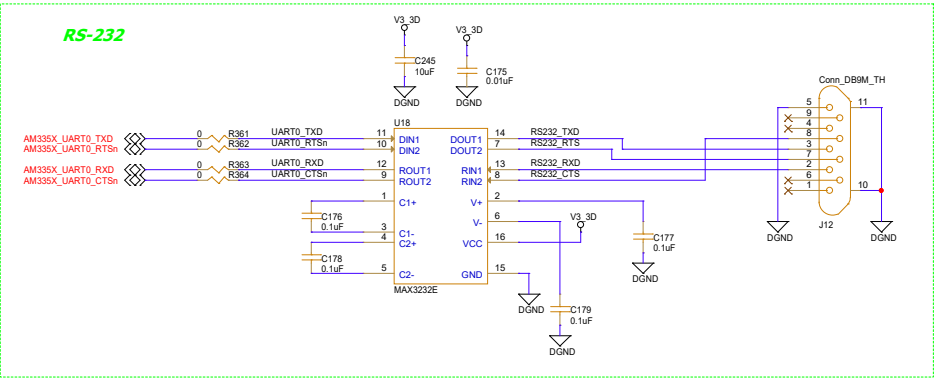
AM335X EVM 15x15 Baseboard
LCD Connector/HDMI

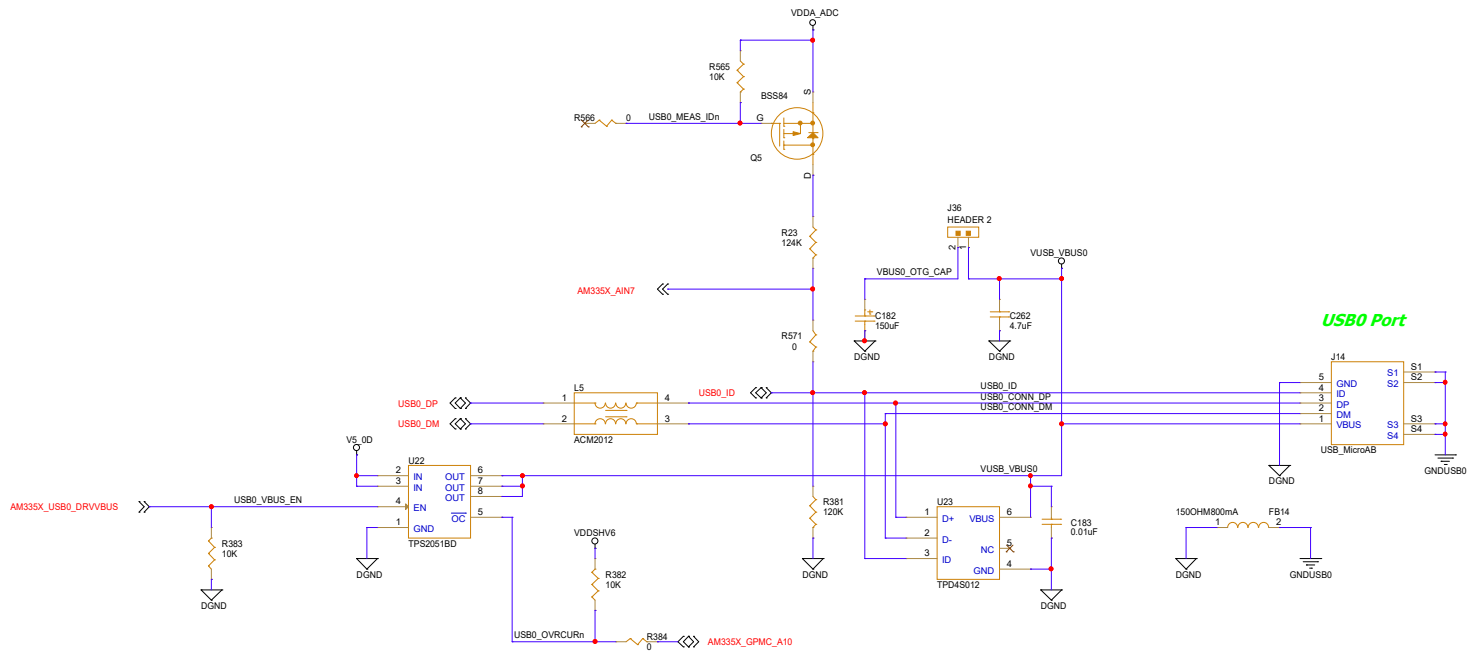
Size	Document Number	Modified By:	Rev
C	am335x_evm_zc2baseboard_3h0002_rev1_4u.dsn	Damon Donkai	1.4A

Date: Friday, July 20, 2012 Sheet: 9 of 15

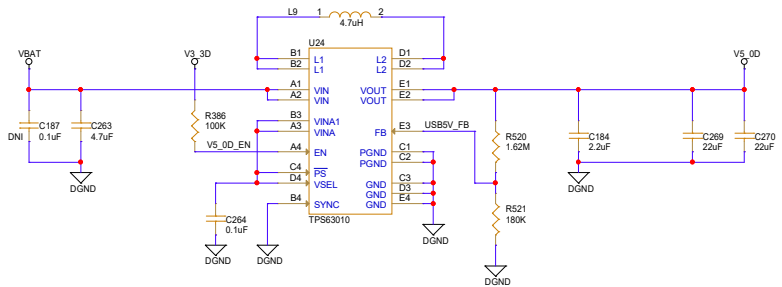


ARM MPU	Texas Instruments, Inc.		TEXAS INSTRUMENTS
	ARM MPU Business Unit 12500 TI Blvd Dallas, TX 75243		
AM335X EVM 15x15 Baseboard			
COM Wireless Connector			
Size	Document Number	Modified By:	Rev
C	am335x_evm_zcbaseboard_3h0002_rev1_4u.dsn	Damon Donika	1.4A
Date:	Friday, July 20, 2012	Sheet: 10	of 15

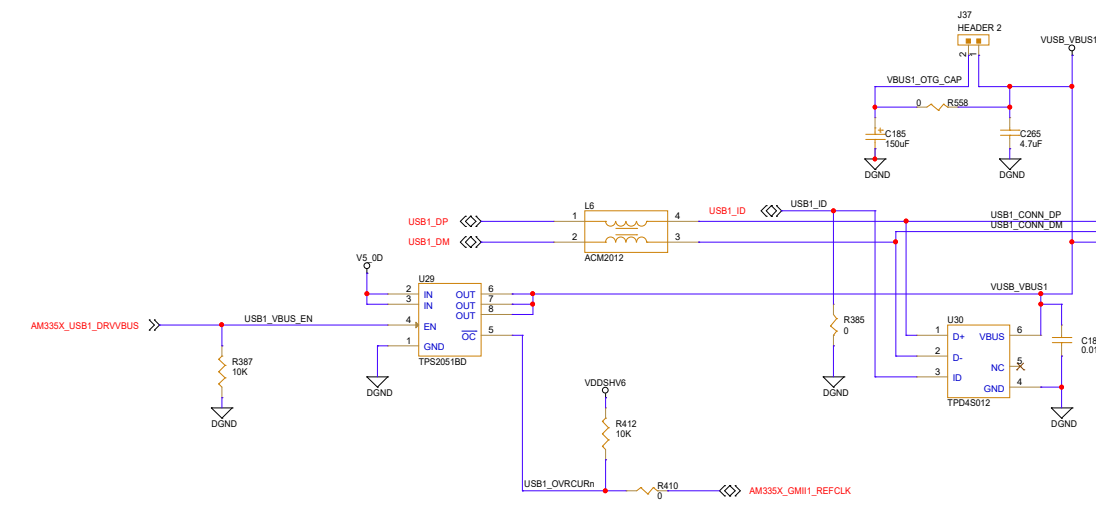




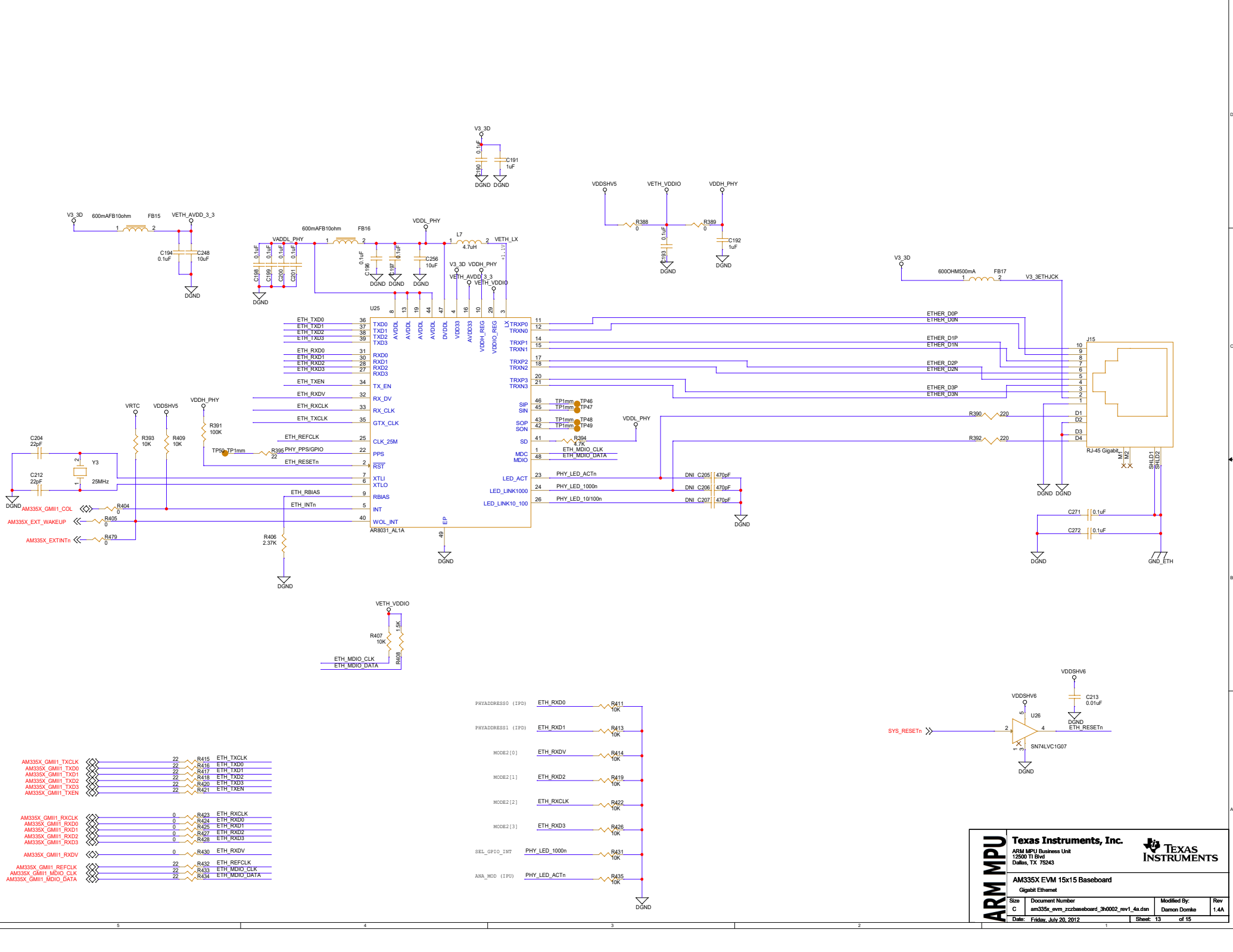
USB0 Port



USB1 Port



ARM MPU	Texas Instruments, Inc.			TEXAS INSTRUMENTS
	ARM MPU Business Unit 12500 TI Blvd Dallas, TX 75243			
	AM335X EVM 15x15 Baseboard USB			
Size	Document Number	Modified By:	Rev	
C	am335x_evm_zcbaseboard_3h0002_rev1_4u.dsn	Damon Donika	1.4A	
Date:	Friday, July 20, 2012	Sheet: 12	of 15	



- AM335X_GMII1_TXCLK 22 R415 ETH_TXCLK
- AM335X_GMII1_TXD0 22 R416 ETH_TXD0
- AM335X_GMII1_TXD1 22 R417 ETH_TXD1
- AM335X_GMII1_TXD2 22 R418 ETH_TXD2
- AM335X_GMII1_TXD3 22 R420 ETH_TXD3
- AM335X_GMII1_TXEN 22 R421 ETH_TXEN
- AM335X_GMII1_RXCLK 0 R423 ETH_RXCLK
- AM335X_GMII1_RXD0 0 R424 ETH_RXD0
- AM335X_GMII1_RXD1 0 R425 ETH_RXD1
- AM335X_GMII1_RXD2 0 R427 ETH_RXD2
- AM335X_GMII1_RXD3 0 R428 ETH_RXD3
- AM335X_GMII1_RXDV 0 R430 ETH_RXDV
- AM335X_GMII1_REFCLK 22 R432 ETH_REFCLK
- AM335X_GMII1_MDIO_CLK 22 R433 ETH_MDIO_CLK
- AM335X_GMII1_MDIO_DATA 22 R434 ETH_MDIO_DATA

- PHYADDRESS0 (IPD) ETH_RXD0 R411 10K
- PHYADDRESS1 (IPD) ETH_RXD1 R413 10K
- MODE2[0] ETH_RXDV R414 10K
- MODE2[1] ETH_RXD2 R419 10K
- MODE2[2] ETH_RXCLK R422 10K
- MODE2[3] ETH_RXD3 R426 10K
- SEL_GP10_INT PHY_LED_1000n R431 10K
- ANA_MD (IPD) PHY_LED_ACTn R435 10K

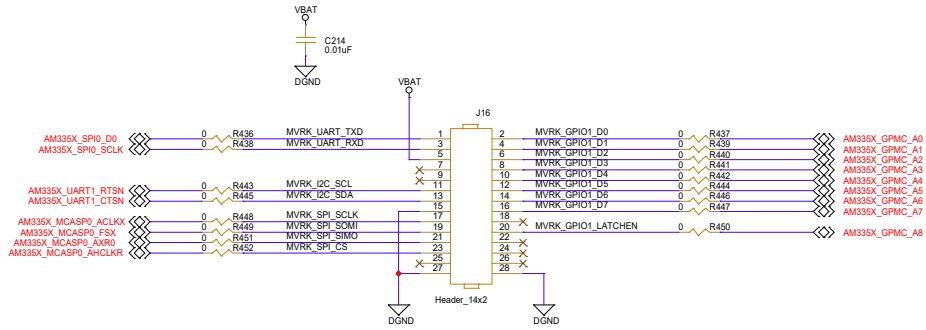
ARM MPU

Texas Instruments, Inc.
 ARM MPU Business Unit
 12500 TI Blvd
 Dallas, TX 75243

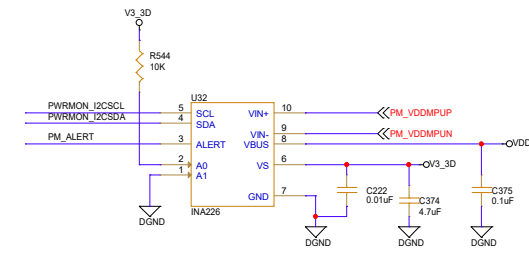
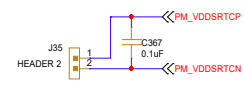
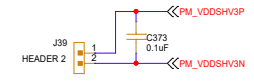
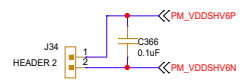
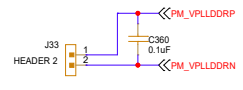
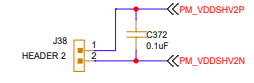
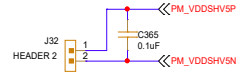
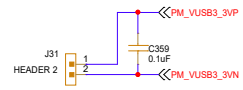
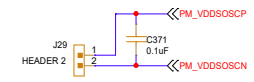
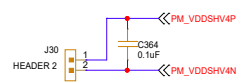
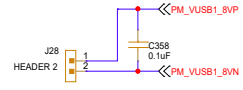
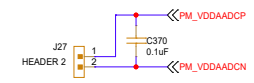
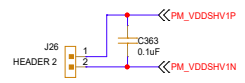
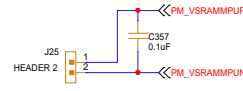
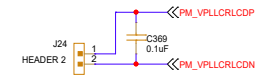
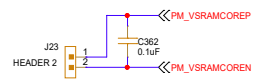
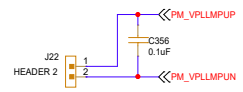
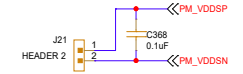
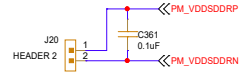
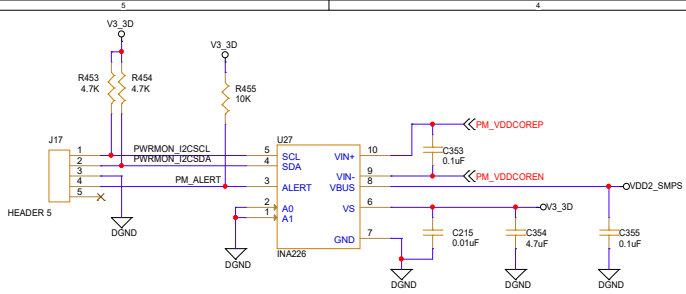
AM335X EVM 15x15 Baseboard
 GigaBit Ethernet

Size	Document Number	Modified By:	Rev
C	am335x_evm_zcbaseboard_3h0002_rev1_4u.dsn	Damon Donika	1.4A
Date:	Friday, July 20, 2012	Sheet: 13	of 15

MAVRK Connector



ARM MPU	Texas Instruments, Inc.			
	ARM MPU Business Unit 12500 TI Blvd Dallas, TX 75243			
	AM335X EVM 15x15 Baseboard			
	Analog MAVRK Connector			
Size	Document Number	Modified By:	Rev	
C	am335x_evm_zcbaseboard_3h0002_rev1_4u.dsn	Damon Donika	1.4A	
Date:	Friday, July 20, 2012	Sheet	14	of 15



ARM MPU	Texas Instruments, Inc.		
	ARM MPU Business Unit 12500 TI Blvd Dallas, TX 75243		
	AM335X EVM 15x15 Baseboard		
Power Monitor			
Size	Document Number	Modified By:	Rev
C	am335x_evm_zccbaseboard_3h0002_rev1_4u.dsn	Damon Donika	1.4A
Date:	Friday, July 20, 2012	Sheet: 15	of 15