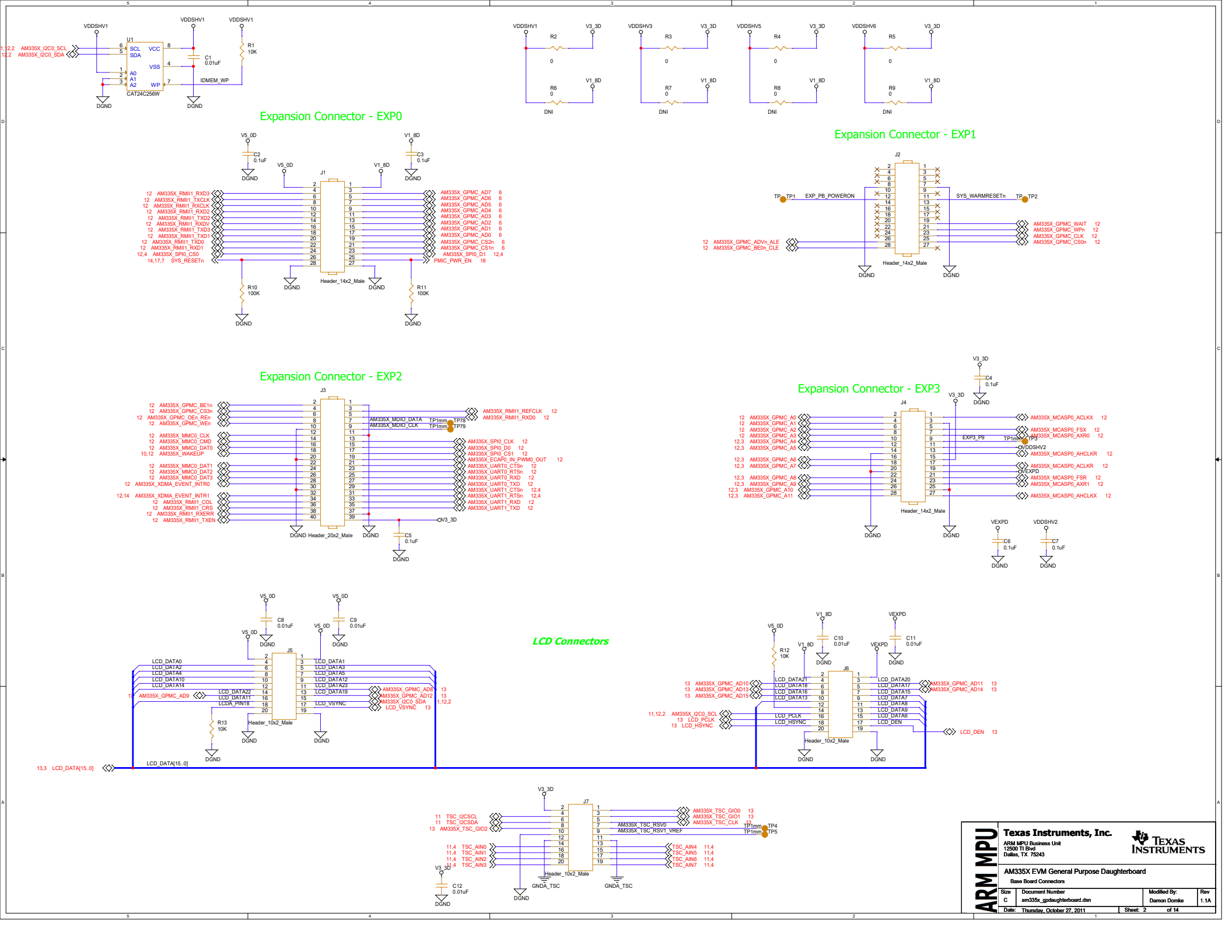


# ARM MPU AM335X General Purpose Daughterboard

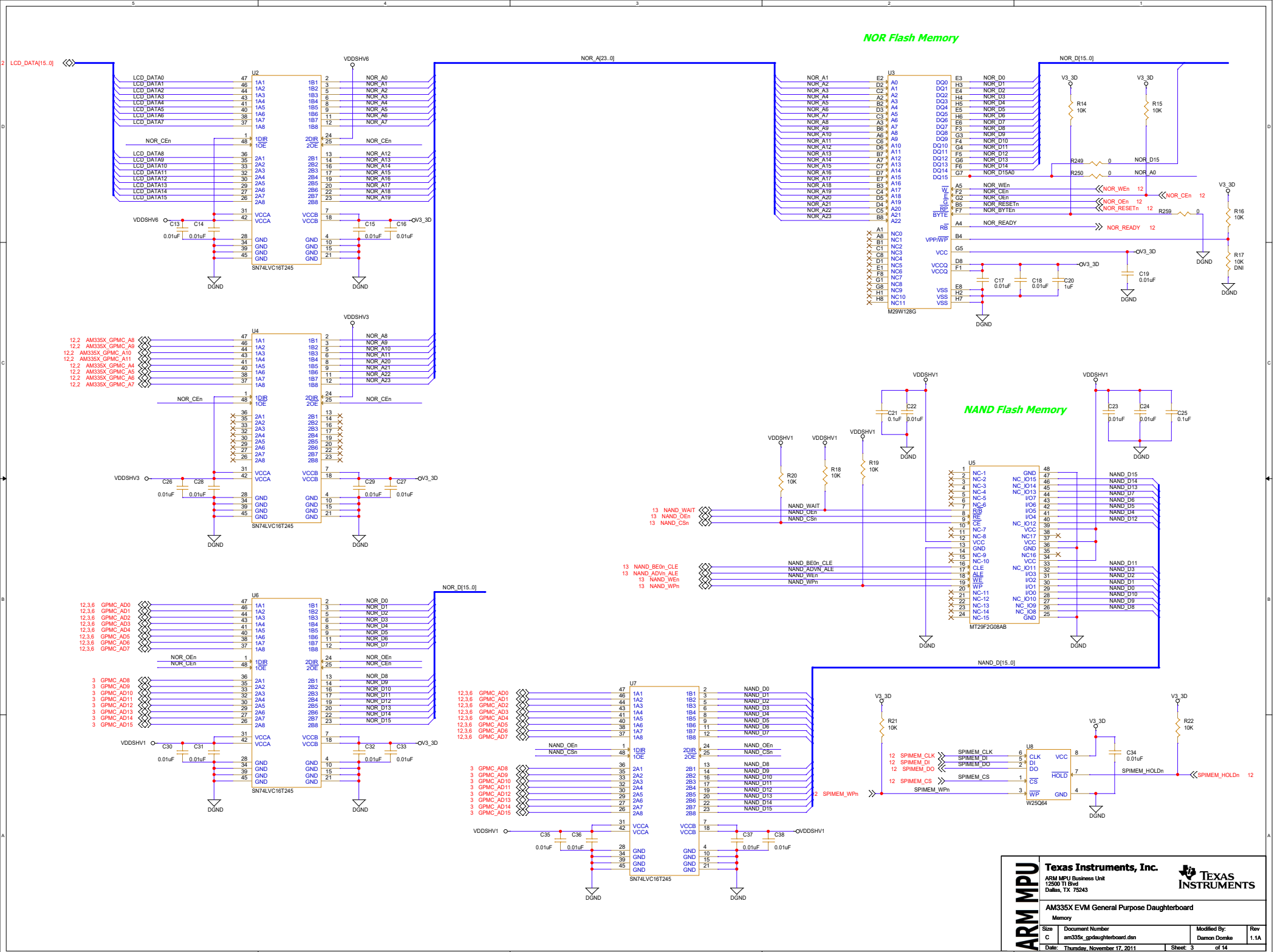
- See the Hardware User's Guide for board details
- See the Hardware Implementation Document for design details
- See the PCB Build Specification for PCB Details



<b>ARM MPU</b>	<b>Texas Instruments, Inc.</b>			
	ARM MPU Business Unit 12500 TI Blvd Dallas, TX 75243			
	AM335X EVM General Purpose Daughterboard			
	Title Page			
Size	Document Number	Modified By:	Rev	
C	am335x_gpdaughterboard.dsn	Damon Dozika	1.1A	
Date:	Tuesday, October 11, 2011	Sheet: 1	of 14	



<b>ARM MPU</b>	<b>Texas Instruments, Inc.</b>		
	ARM MPU Business Unit 12500 TI Blvd Dallas, TX 75243		
	<b>AM335x EVM General Purpose Daughterboard</b>		
	Base Board Connectors		
Size	Document Number	Modified By:	Rev
C	am335x_gpddaughterboard.dsn	Damon Donkja	1.1A
Date:	Thursday, October 27, 2011	Sheet: 2	of 14



**NOR Flash Memory**

**NAND Flash Memory**

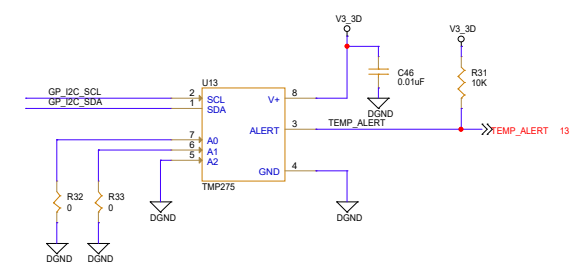
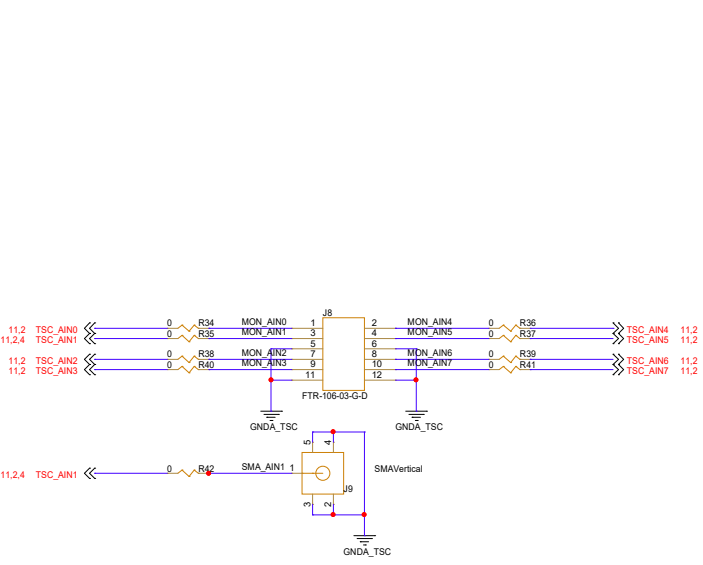
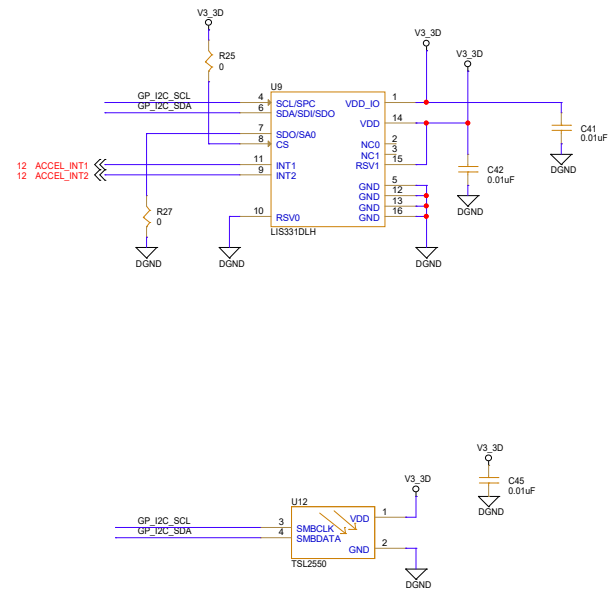
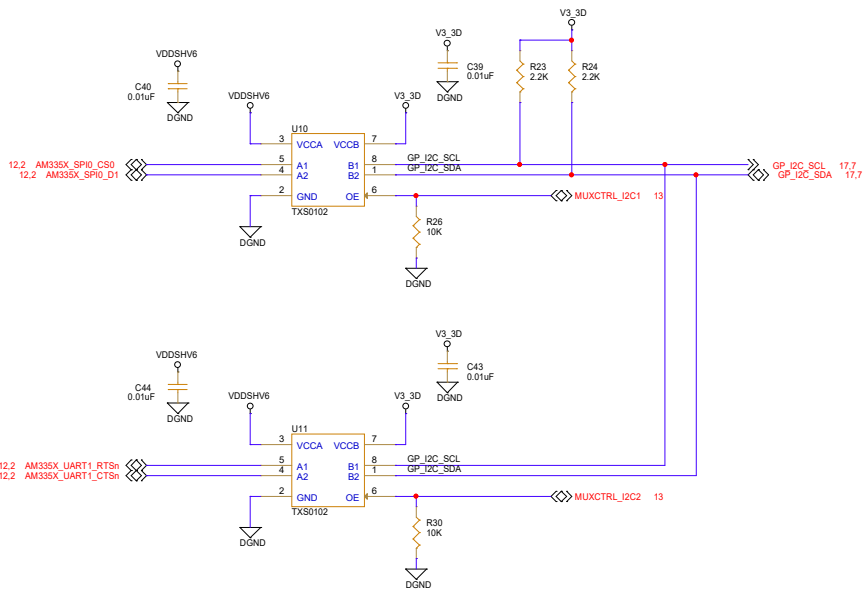
**ARM MPU** **Texas Instruments, Inc.**  
 ARM MPU Business Unit  
 12500 TI Blvd  
 Dallas, TX 75243

**AM335X EVM General Purpose Daughterboard**

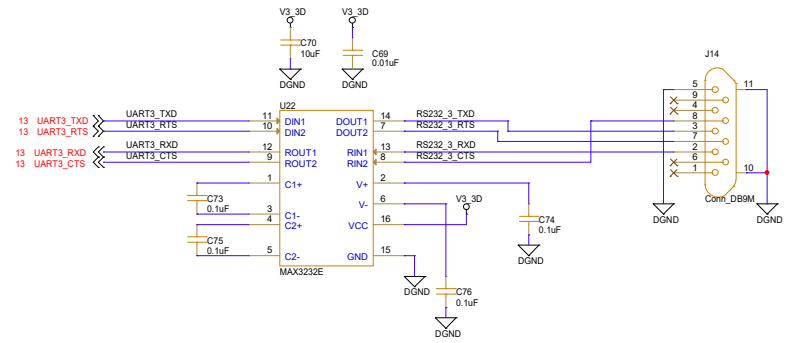
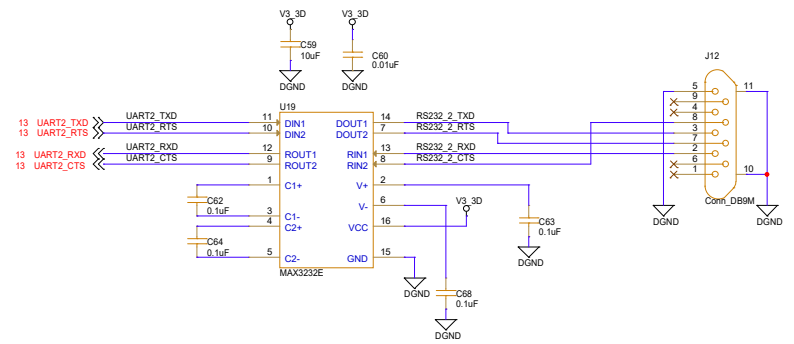
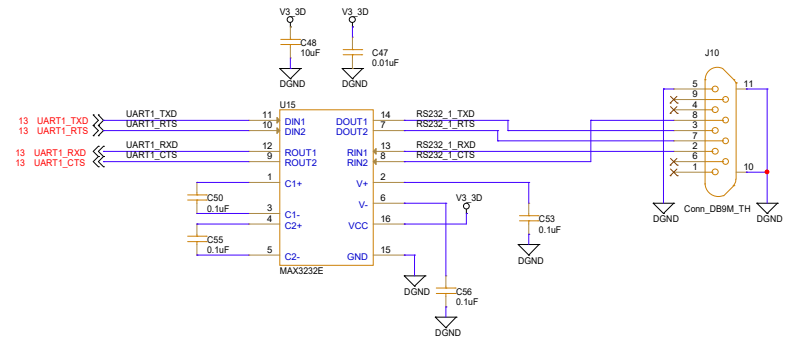
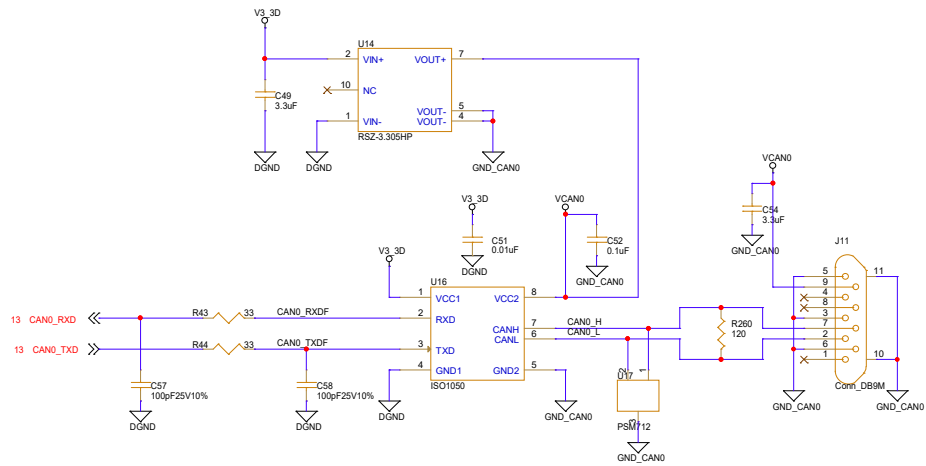
Memory

Size	Document Number	Modified By:	Rev
C	am335x_gpddaughterboard.dsn	Damon Domka	1.1A

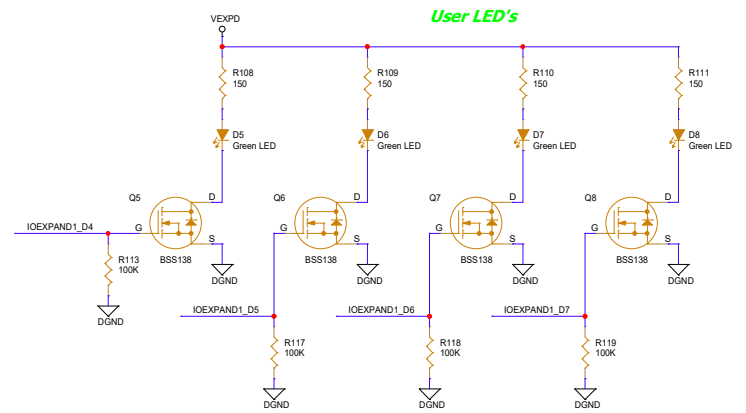
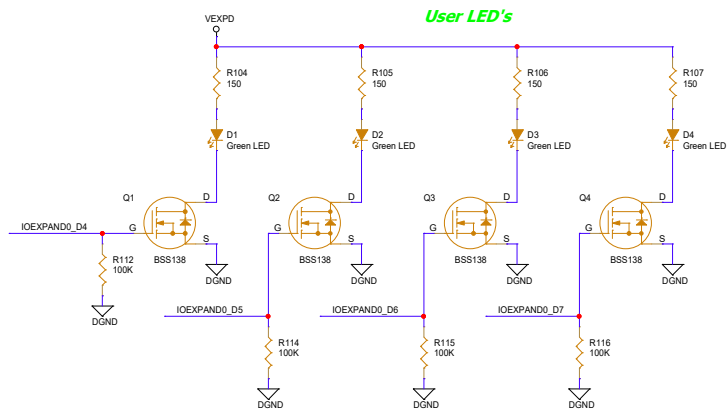
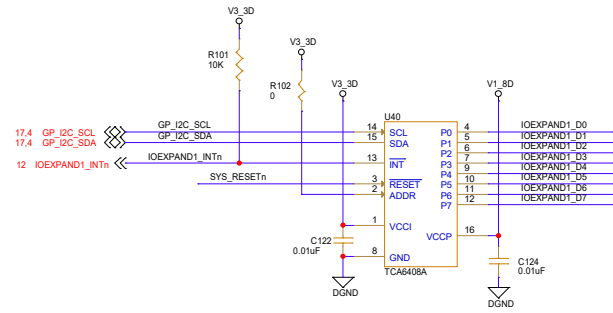
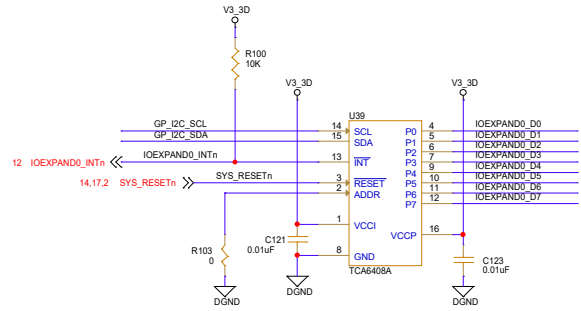
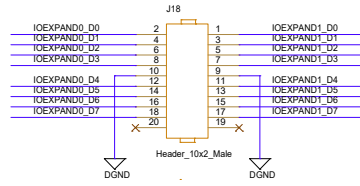
Date: Thursday, November 17, 2011 Sheet: 3 of 14



<b>ARM MPU</b>	<b>Texas Instruments, Inc.</b>			
	ARM MPU Business Unit 12500 TI Blvd Dallas, TX 75243			
	<b>AM335X EVM General Purpose Daughterboard</b>			
	Sensors			
Size	Document Number	Modified By:	Rev	
C	am335x_gpdaughterboard.dsn	Damon Donkai	1.1A	
Date:	Thursday, October 27, 2011	Sheet: 4	of 14	

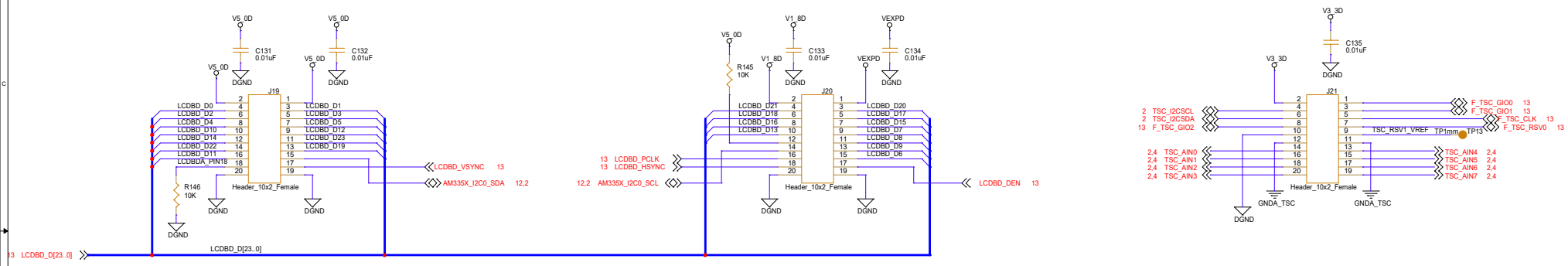




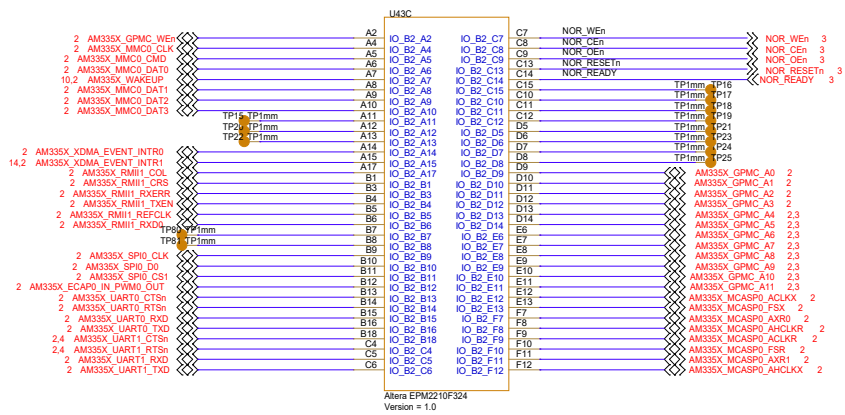
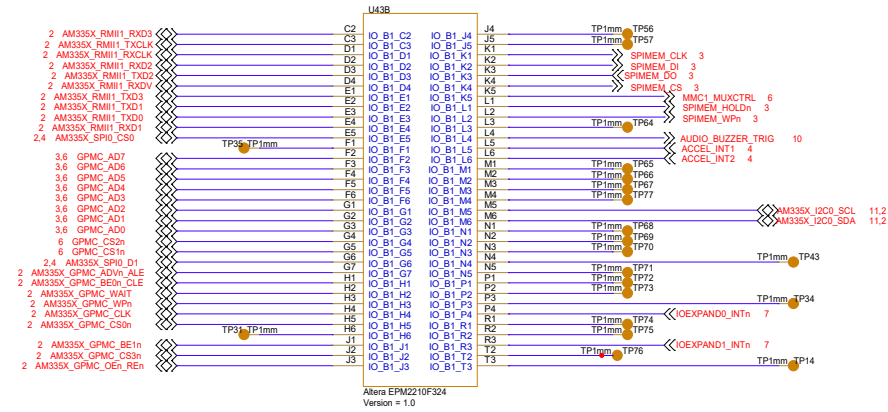


<b>ARM MPU</b>	<b>Texas Instruments, Inc.</b>		
	ARM MPU Business Unit 12500 TI Blvd Dallas, TX 75243		
	<b>AM335X EVM General Purpose Daughterboard</b>		
	I2C Expander I/O		
Size	Document Number	Modified By:	Rev
C	am335x_gpdaughterboard.dsn	Damon Donike	1.1A
Date:	Tuesday, October 11, 2011	Sheet: 7	of 14

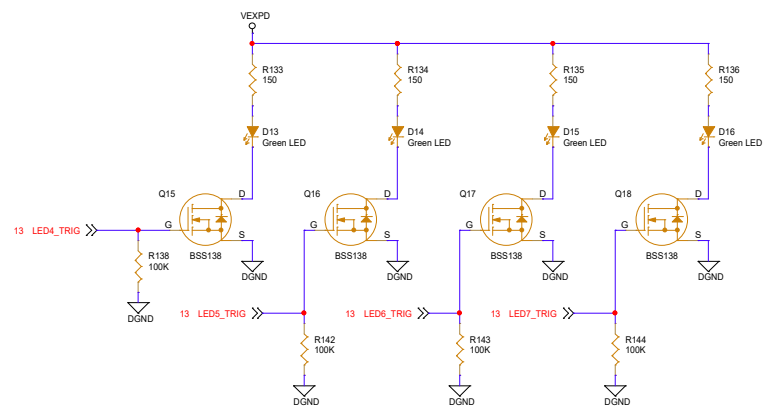
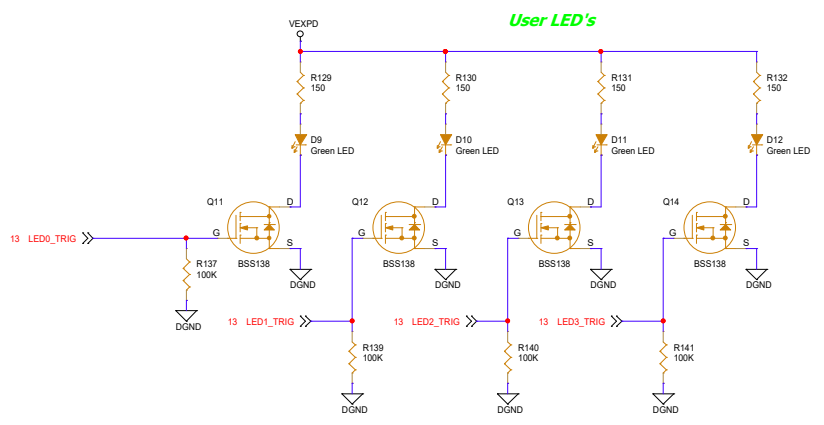
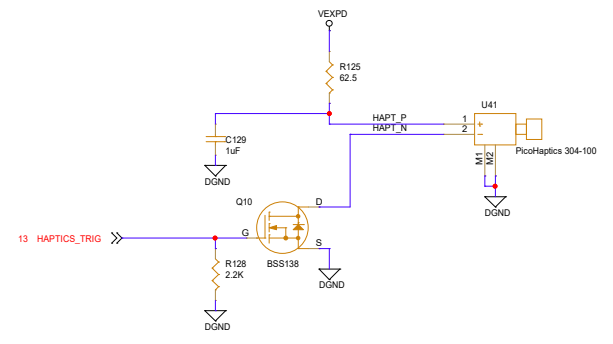
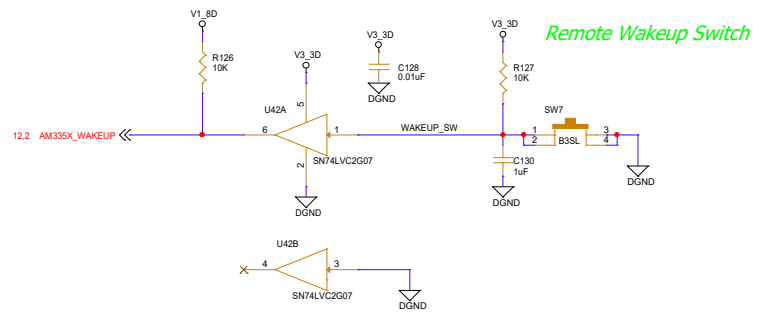
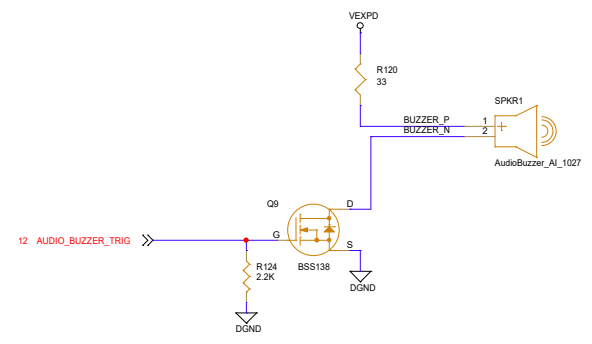
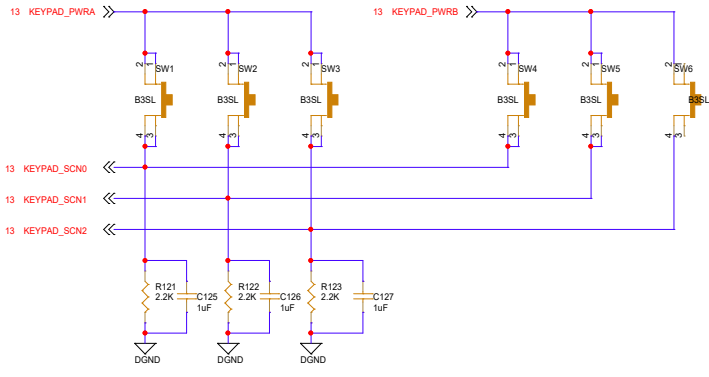
### LCD Connectors



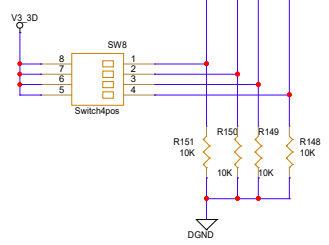
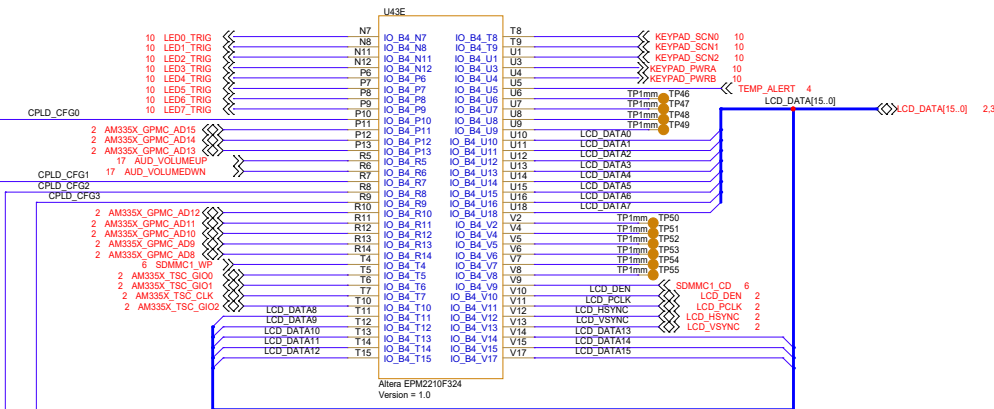
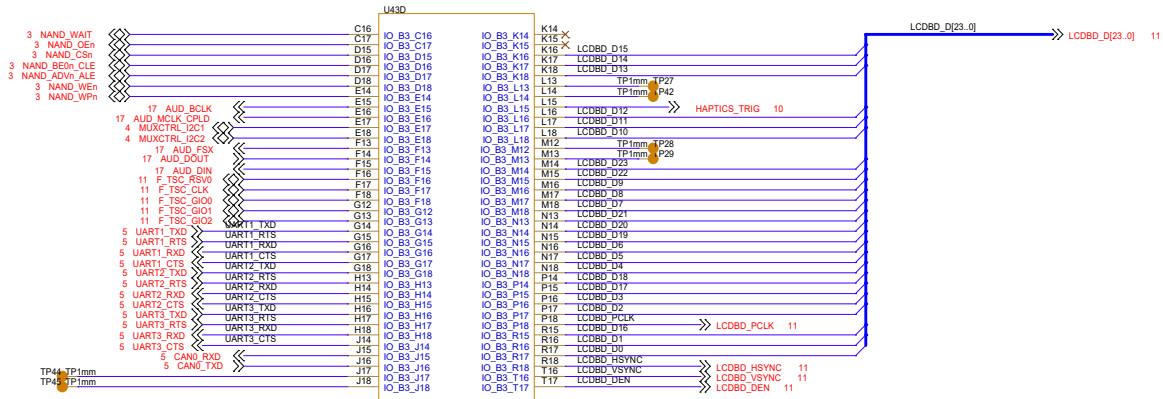




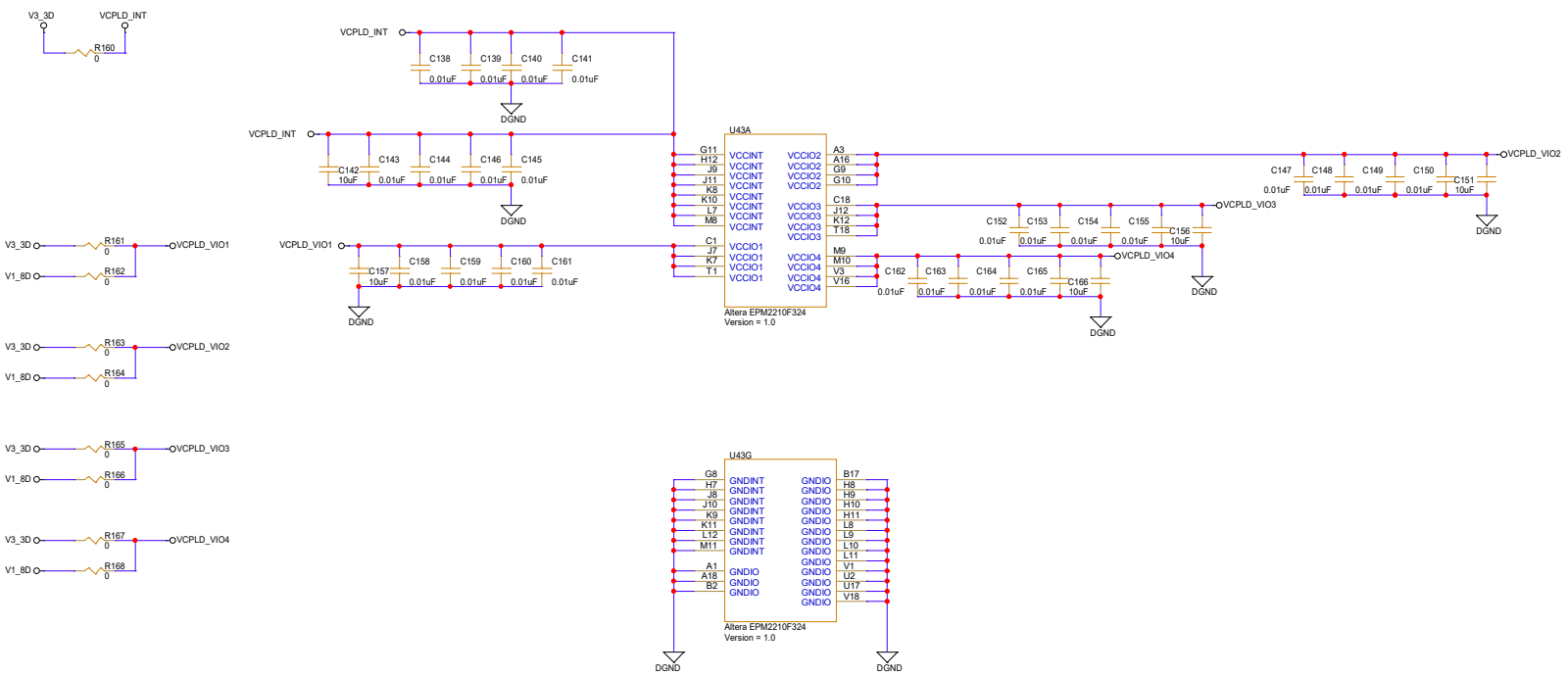
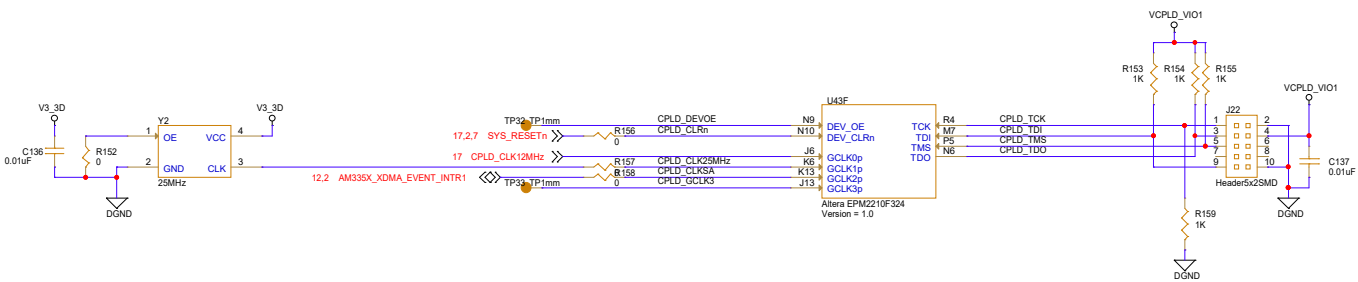
<b>ARM MPU</b>	<b>Texas Instruments, Inc.</b>		
	ARM MPU Business Unit 12500 TI Blvd Dallas, TX 75243		
<b>AM335X EVM General Purpose Daughterboard</b>			
CPLD I/O #0			
Size	Document Number	Modified By:	Rev
C	am335x_gpdaughterboard.dsn	Damon Donkic	1.1A
Date:	Tuesday, October 11, 2011	Sheet: 10	of 14

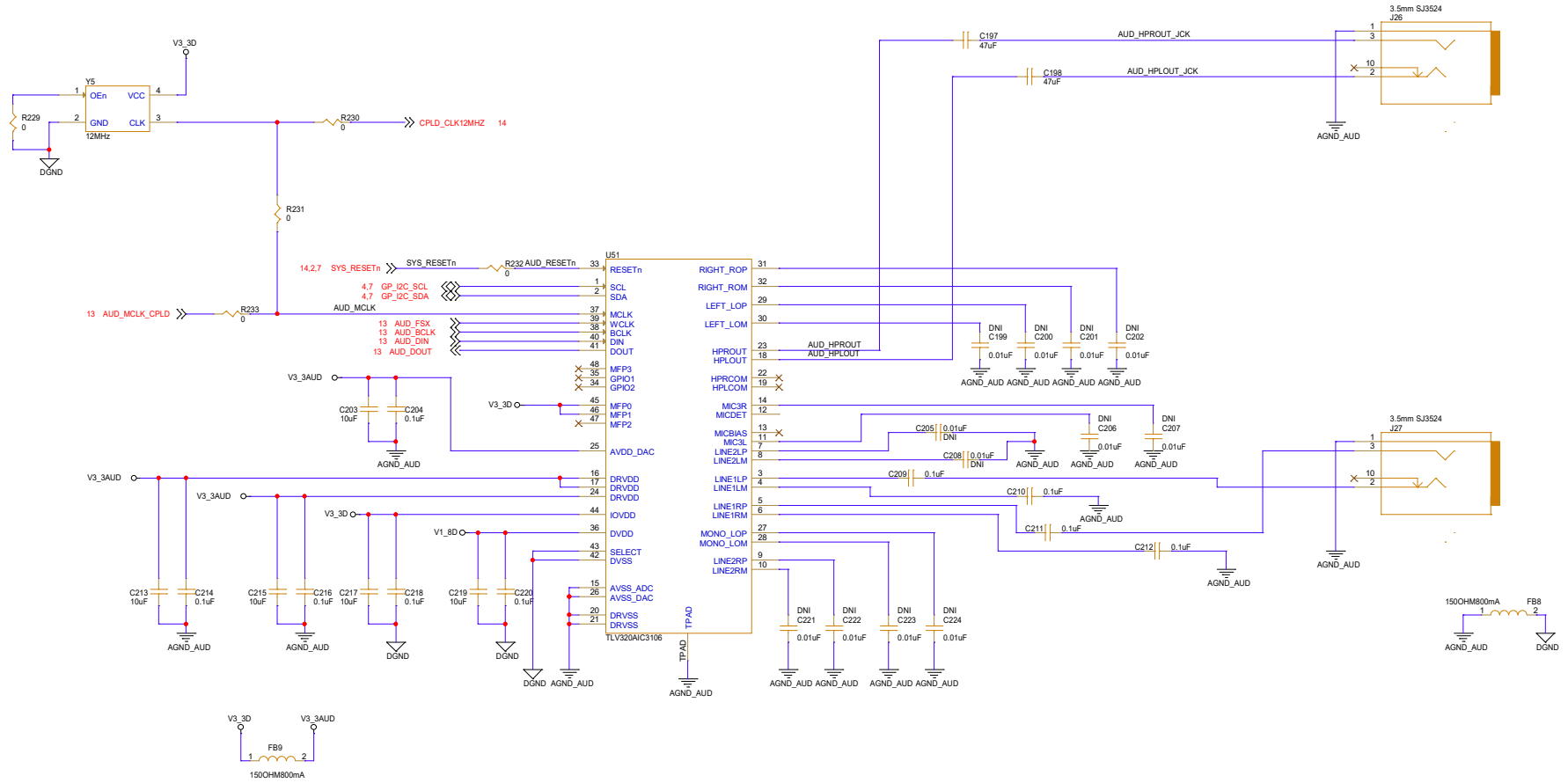


<b>ARM MPU</b>	<b>Texas Instruments, Inc.</b>			
	ARM MPU Business Unit 12500 TI Blvd Dallas, TX 75243			
	<b>AM335X EVM General Purpose Daughterboard</b>			
	Switches, LEDs, & Haptic			
Size	Document Number	Modified By:	Rev	
C	am335x_gpdaughterboard.dsn	Damon Donike	1.1A	
Date:	Thursday, October 27, 2011	Sheet: 10	of 14	



<b>ARM MPU</b>	<b>Texas Instruments, Inc.</b>		
	ARM MPU Business Unit 12500 TI Blvd Dallas, TX 75243		
	<b>AM335X EVM General Purpose Daughterboard</b> CPLD #1 I/O		
Size C	Document Number am335x_gpdaughterboard.dsn	Modified By: Damon Donkai	Rev 1.1A
Date: Thursday, October 27, 2011	Sheet: 11	of 14	





<b>ARM MPU</b>	<b>Texas Instruments, Inc.</b>			
	ARM MPU Business Unit 12500 TI Blvd Dallas, TX 75243			
	<b>AM335X EVM General Purpose Daughterboard</b>			
	Audio			
Size	Document Number	Modified By:	Rev	
C	am335x_gpddaughterboard.dsn	Damon Doma	1.1A	
Date:	Thursday, October 27, 2011	Sheet:	13	of 14

