

## Installation of LCD Kit on AM57x IDK (continued)



- 8** The IDK can now be powered on and used as described in the AM57x IDK Quick Start Guide that came with the IDK board.



For more information:  
[www.ti.com/am57idklcd](http://www.ti.com/am57idklcd)

For more information on AM57x processors, including:

- User Guide
- Software
- How Tos
- Design Files

Please visit [www.ti.com/am57x](http://www.ti.com/am57x) and [www.ti.com/am57idklcd](http://www.ti.com/am57idklcd)

For support questions, please contact: [support@ti.com](mailto:support@ti.com) or [www.ti.com/e2e](http://www.ti.com/e2e).



# AM57x IDK LCD Kit Quick Start Guide

**Important Notice:** The products and services of Texas Instruments Incorporated and its subsidiaries described herein are sold subject to TI's standard terms and conditions of sale. Customers are advised to obtain the most current and complete information about TI products and services before placing orders. TI assumes no liability for applications assistance, customer's applications or product designs, software performance, or infringement of patents. The publication of information regarding any other company's products or services does not constitute TI's approval, warranty or endorsement thereof.

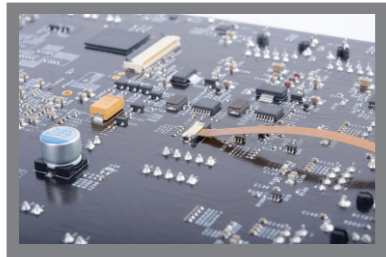
**Trademarks in this issue:** The platform bar and Sitara are trademarks of Texas Instruments. All other trademarks are the property of their respective owners.

Welcome to the AM57x IDK LCD Kit Quick Start Guide. This guide is designed to help you through the installation of the LCD screen onto an AM57x IDK. This kit enables the use of an LCD screen with the industrial development kits (IDKs) for the AM57x Cortex®-A15 and C66x processors for evaluation and testing of industrial display-focused use cases such as industrial HMI, Panel PLC, and other industrial displays. The 10.1" LCD screen has 1920×1200 resolution and supports 10-point capacitive touch. The AM57x IDK LCD Kit contains the following:

- **Hardware**
  - 10.1" LCD Screen (1920×1200)
  - LCD cable
  - Touch cable
  - Standoffs for attaching an AM57x IDK such as the TMDXIDK5728 (TMDXIDK5728 is available for purchase separately)
- **Printed documents**
  - AM57x IDK LCD Kit Quick Start Guide (this document)
  - Terms and conditions

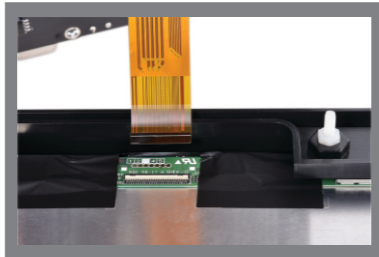
### Installation of LCD Kit on AM57x IDK

**1** Make sure the AM57x IDK is powered down and unplugged from all power sources.



**2** Connect the touch cable to the IDK board using connector J17 on the back side of the board. Make sure the connector is in the open position with the black portion slid outwards. Insert the plain end of the touch cable into the connector with the contacts facing away from the IDK (up). Close the connector to secure the connection.

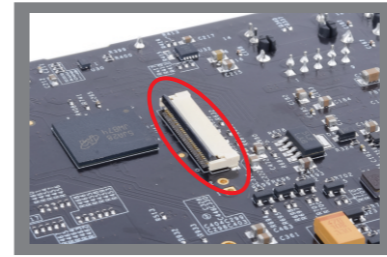
**Note:** Cables should be attached in exactly the order listed here to avoid stress on connectors during installation, which can damage parts.



**3** Connect the LCD cable to the LCD panel by lifting up the white flap on the connector on the LCD kit, then inserting the end of the cable into the black side of the connector with the cable contacts facing the LCD screen (down). Then push the white flap down to secure the connection.



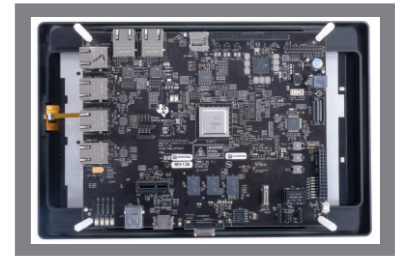
### Installation of LCD Kit on AM57x IDK (continued)



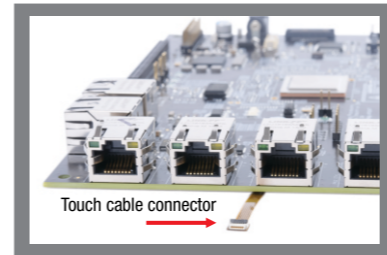
**4** Make sure connector J16 is in the open position with the black flap raised.



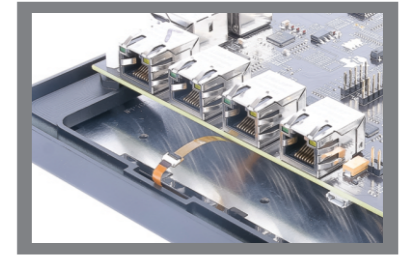
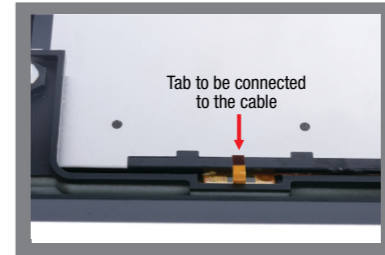
**5** Position the IDK board close to the LCD screen and connect the LCD cable to the IDK board using connector J16. The cable should be connected with the contacts facing away from the IDK (up). Ensure the connector is secure by pressing down on the black flap.



**6** Mount the IDK on the LCD screen so that the screws on the LCD assembly fit through the holes on the PCB and attach standoffs to secure the board. Note that two standoffs must be attached if the camera module will be used. Tighten standoffs only to finger tightness; overtightening may loosen the assembly from the display frame.



**7** Connect the touch cable to the LCD screen using the connector on the end of the cable. The connector is opened and closed using the black flap.



Continued on following page