

Getting Started

The EVM ships with HUA out of box(OOB) demo and Power On Self Test(POST) preloaded. The HUA demo is loaded into NOR flash and the POST is loaded into EEPROM.

At power ON all User/Debug LEDs are ON by default. Once OOB/POST execution completes the User/Debug LEDs will turn OFF.

The default EVM boot mode/configuration switches are set such as to run HUA OOB demo automatically at power ON. To see the output of HUA demo please refer steps 1 to 5 presented in this Quick Setup Guide.

Please refer to the EVM User Guide for software installation and other details

Important Notes when handling the EVM

- Plug in all the cables before powering ON the EVM to ensure proper grounding.
- Do not unnecessarily flex the boards, while inserting cables. Excessive flexing can break the PCB traces.
- Use proper ESD procedures when handling the EVM.
- Warning: Some components on the EVM may be too hot to touch with your bare hand when power is on.

Online Documentation

- TMS320C6657 processor website
<http://www.ti.com/product/TMS320C6657>
- MCDK BIOS reference:
<http://e2e.ti.com/support/embedded/bios/default.aspx>
- CCS support link:
http://e2e.ti.com/support/development_tools/code_composer_studio/default.aspx

C6657 EVM Information:

<http://www.einfochips.com/TI-TMDSEVMC6657L.php>

This link contains

- Hardware & Software details
- User Guide
- Technical Reference Manual
- TMS320C6657 Datasheet

C6657 EVM Support:

Please write to evm6657support@einfochips.com for technical queries related to this EVM.

einfochips Address:

einfochips Limited
303,Parishram Building, 5/B Rashmi Society,
Mithakhali Six Road, Navarangpura,
Ahmedabad - 380009,
Gujarat, INDIA.

Tel: +91-79-2656 3705

Fax: +91-79-2656 0722

<http://www.einfochips.com/>

©2012 Texas Instruments Incorporated

TI Worldwide Technical Support

Internet

TI Semiconductor Product Information Center Home Page
support.ti.com

TI Semiconductor KnowledgeBase Home page
support.ti.com/sc/knowledgebase

Product Information Centers

Americas

Phone +1(972) 644-5580 Fax +1(972)927-6377
Internet/Email support.ti.com/sc/pic/americas.htm

Europe, Middle East and Africa

Phone
European Free Call 00800-ASK-TEXAS
(00800 275 83927)
International +49 (0) 8161 80 2121
Russian Support +7 495 981 0701

Note: The European Free Call (Toll Free) number is not active in all countries. If you have technical difficulty calling the free call number, please use the international number above.

Fax +[49] (0) 8161 80 2045
Internet support.ti.com/sc/pic/euro.htm

Japan

Fax
International +81-3-3344-5317
Domestic 0120-81-0036
Internet/Email
International support.ti.com/sc/pic/japan.htm
Domestic www.tij.co.jp/pic

Asia

Phone
International +91-80-413816651-
Domestic Toll-Free-Number Toll-Free-Number
Australia 800-999-084 Malaysia 1-800-80-3973
China 800-820-8682 New Zealand 0800-446-934
Hong Kong 800-96-5941 Philippines 1-800-765-7404
India 1-800-425-7888 Singapore 800-886-1028
Indonesia 001-803-8861-1006 Taiwan 0800-006800
Korea 080-551-2804 Thailand 001-800-886-0010

Fax +886-2-2378-6808

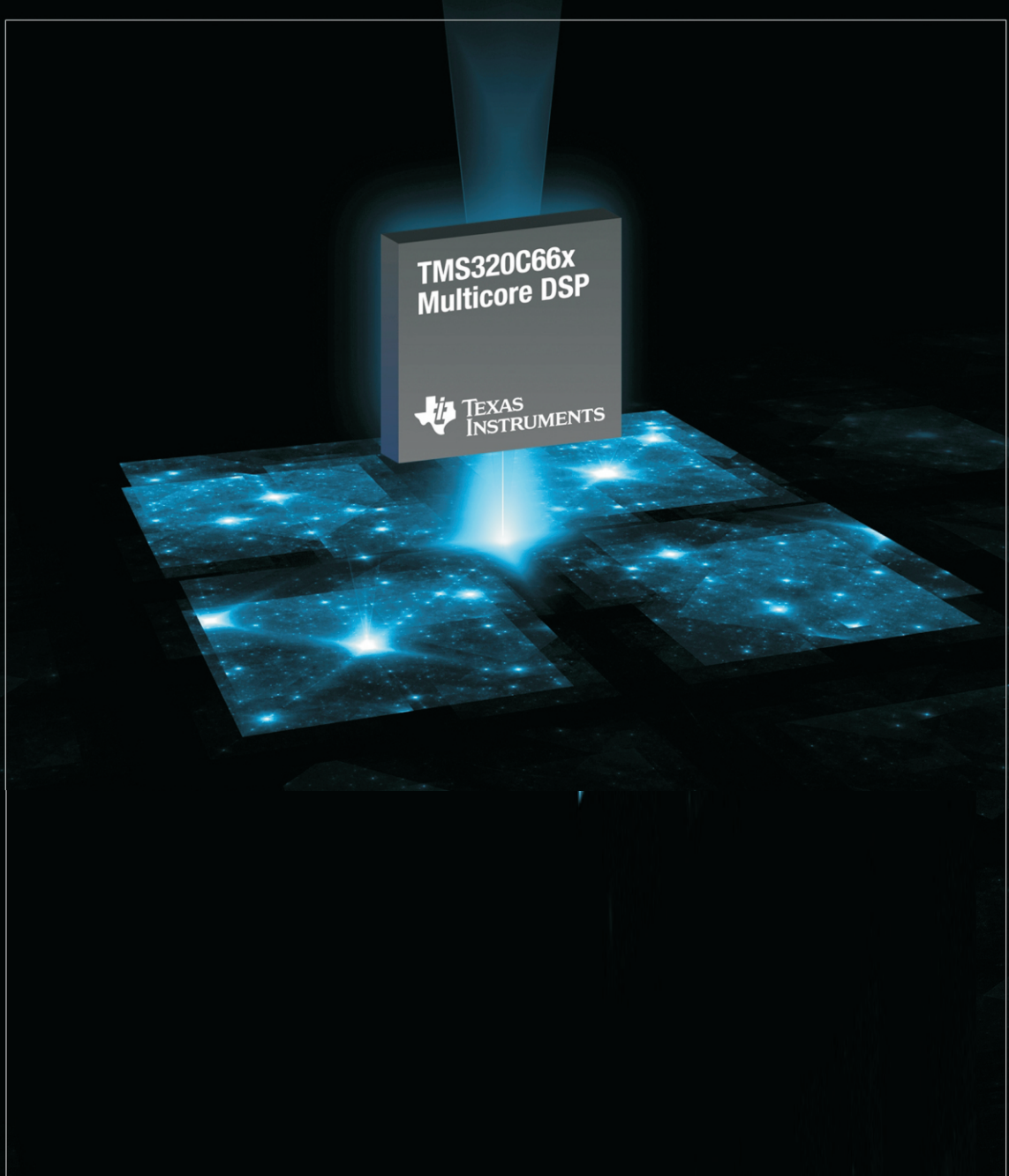
Email tiasia@ti.com

ti-china@ti.com


Internet support.ti.com/sc/pic/asia.htm

Important Notice: The products and services of Texas Instruments Incorporated and its subsidiaries described herein are sold subject to TI's standard terms and conditions of sale. Customers are advised to obtain the most current and complete information about TI products and services before placing orders. TI assumes no liability for applications assistance, customer's applications or product designs, software performance, or infringement of patents. The publication of information regarding any other company's products or services does not constitute TI's approval, warranty or endorsement thereof.

The floating bar is a trademark of Texas Instruments.
All other trademarks are the property of their respective owners

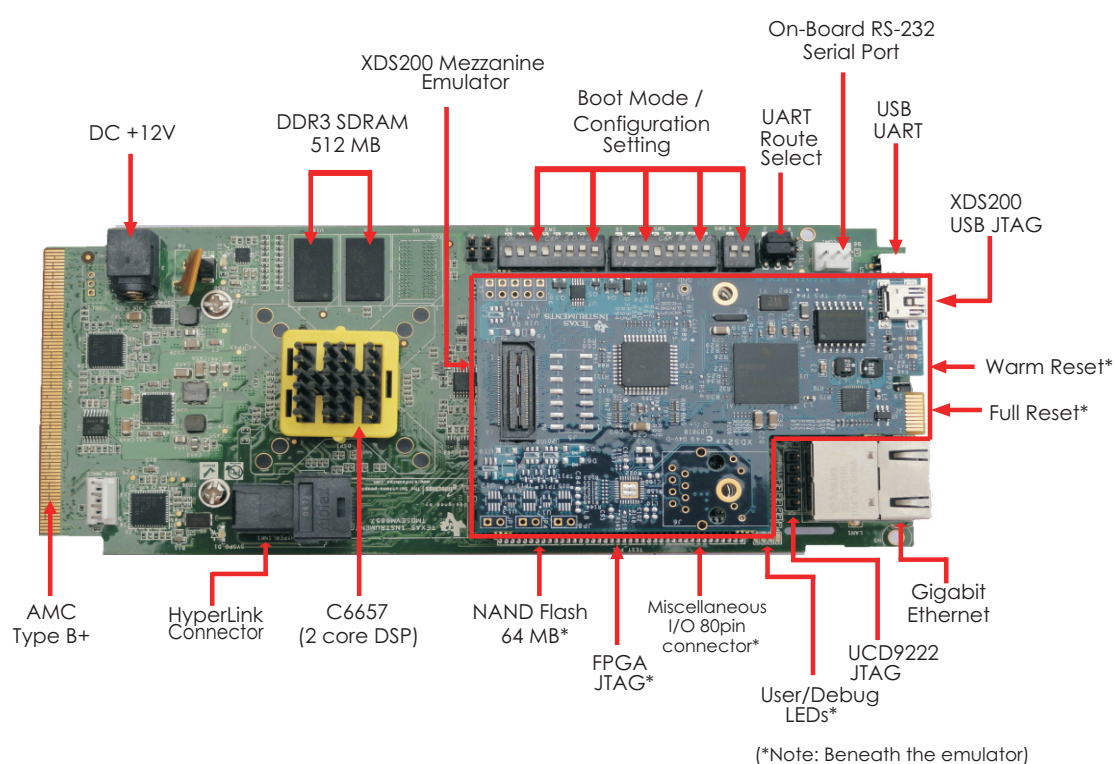


TMS320C6657 Evaluation Module (with integrated XDS200 Emulator) Quick Setup Guide



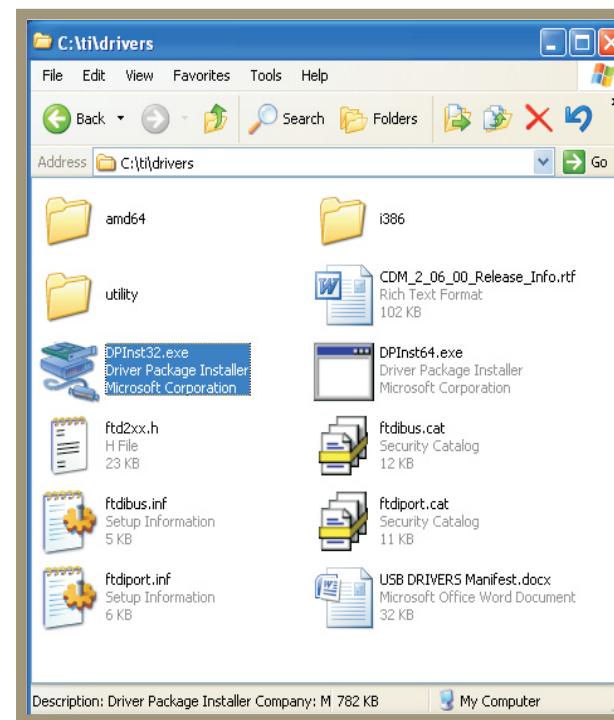
TMDSEVM6657LS

TMS320C6657 Evaluation Module (with Integrated XDS200 Emulator)



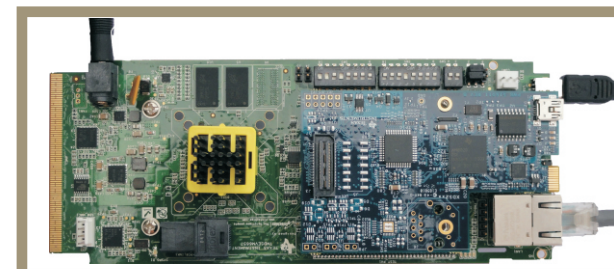
The TMDSEVM6657LS (Evaluation Module) kit includes:

- TMS320C6657 Evaluation Module with Integrated XDS200 Emulator
- Power adapter and power cord
- USB cable for on-board XDS100 JTAG emulation
- Ethernet cable
- RS-232 serial cable
- Software (DVD) and documentation



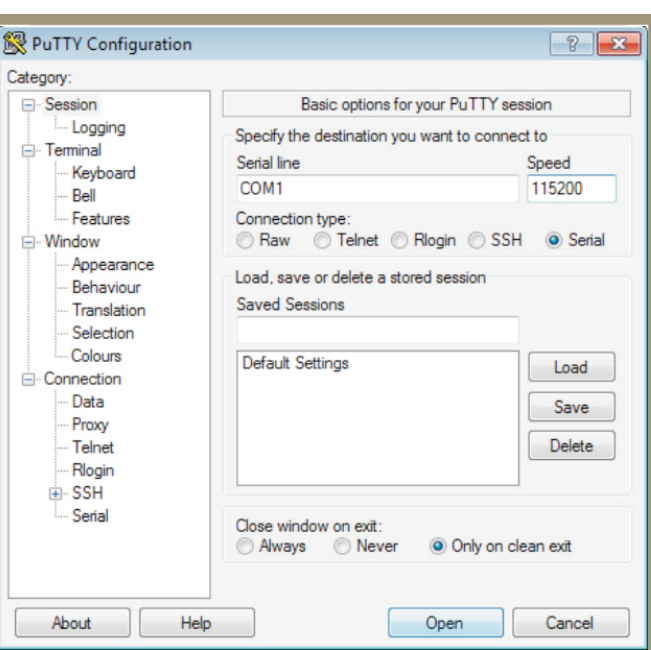
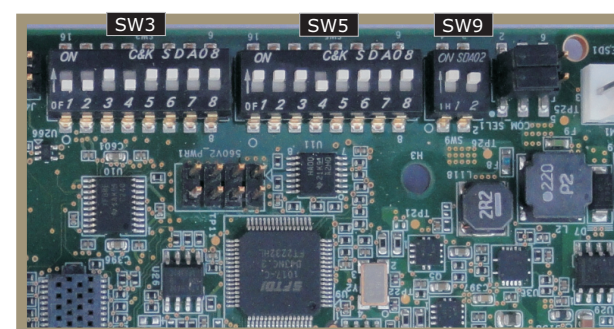
1

Insert the DVD and load the USB COM driver by executing the install program USB_COM_Driver.exe from the \drivers directory on the DVD. Follow the instructions to accept the Software License Agreement and unbundle the files into the directory chosen on your computer. Execute DPInst32.exe in the target directory to complete the installation. Use DPInst64.exe on 64-bit machines.



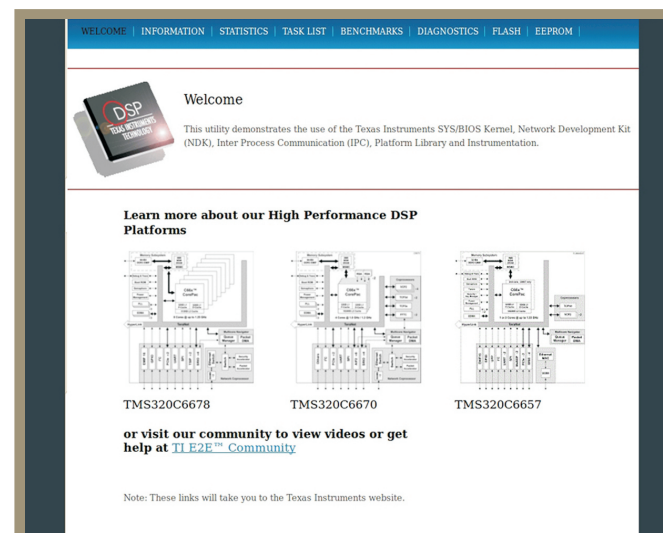
2

Connect the USB mini-B cable to USB1, Ethernet cable to Ethernet port (LAN1) and +12V DC power adapter to power jack(DC_IN1). Ensure EVM configuration switches (SW3, SW5, and SW9) are set as shown.



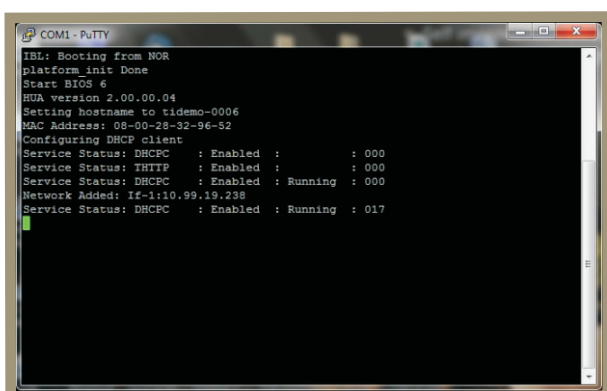
3

Open your preferred serial console window (TeraTerm, HyperTerminal, PuTTY) and connect to the COM port for the EVM using the these configuration settings.



5

Open the web browser, copy the IP address (10.99.19.238) from step 4 to the web browser.

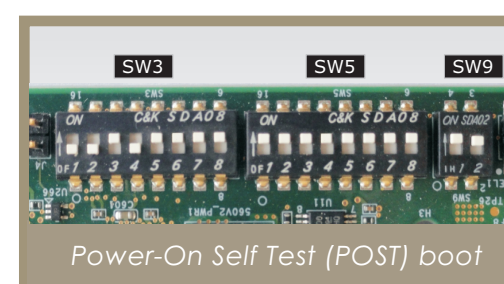


4

Press RESET_FULL button on the EVM. Allow 40 seconds for the BIOS Out-Of-Box (OOB) Demo to complete booting. The demo acquires an IP address from server and displays it on console. If IP address does not display on console, re-press RESET_FULL button. Copy the Network Added: IF-1: IP address from serial console screen.

Notes:

1. Additionally, this EVM has Power On Self Test (POST) boot mode settings. The settings of the EVM configuration switches (SW3, SW5 and SW9) for power-on self test boot is shown as figure. Press the RESET_FULL button after changing switch settings and follow preferred serial console setting in step 3.



2. Follow the READ_ME_FIRST instructions for installing tools, MCSDK 2.0 and demos on your PC.
3. Refer to the Getting Started Guide under MCSDK for details on boot configurations.
4. Visit the following website for the latest MCSDK updates:
<http://www.ti.com/tool/bioslinuxmcsdk>