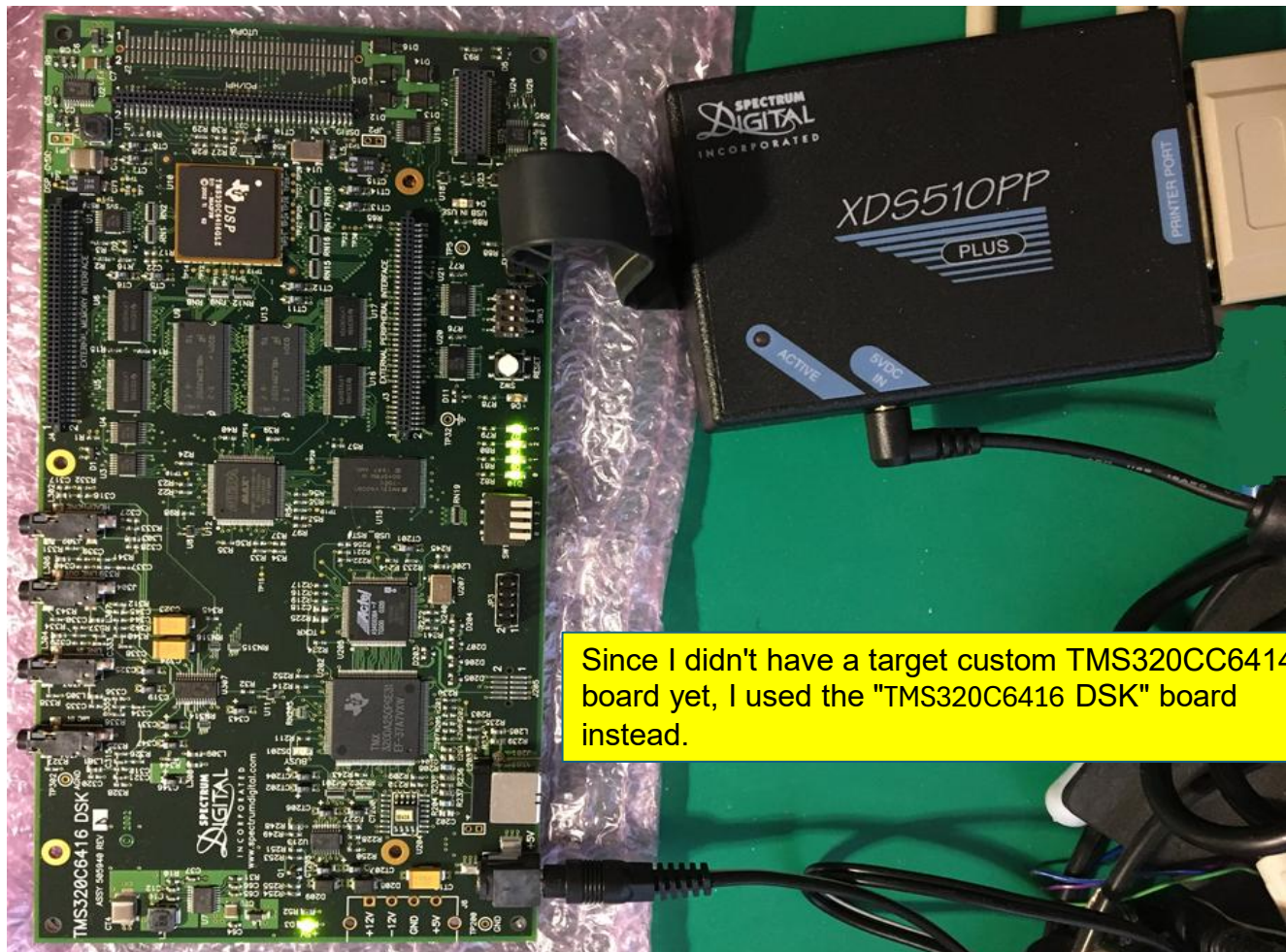
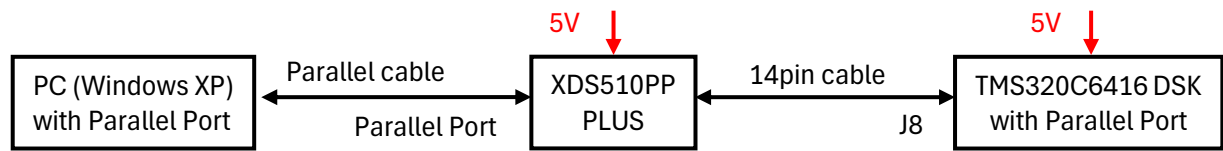


Try to use XDS510PP



1. PC BIOS setting "Parallel port"

Parallel port		Item Specific Help
Parallel port	[Enabled]	Configure parallel port using options: [Disabled] No configuration [Enabled] User configuration (OS Controlled) Displayed when controlled by OS
Mode	[Bi-directional]	
Base I/O address	[3BC]	
Interrupt	[IRQ 7]	
F1 Help↑↓ Select Item F5/F6 Change Values F9 Setup Defaults F3/ESC Exit Enter Select ► Sub-Menu F10 Save and Exit		

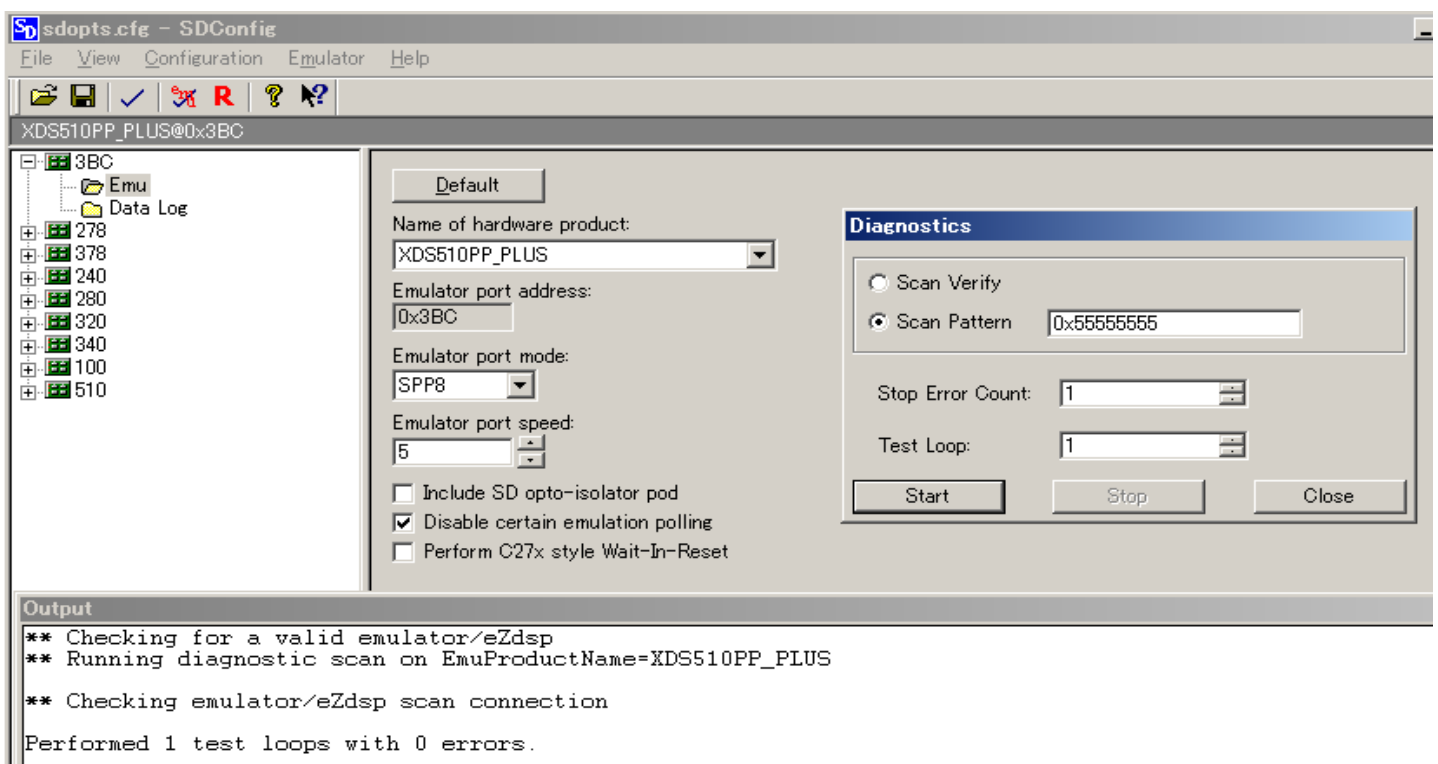
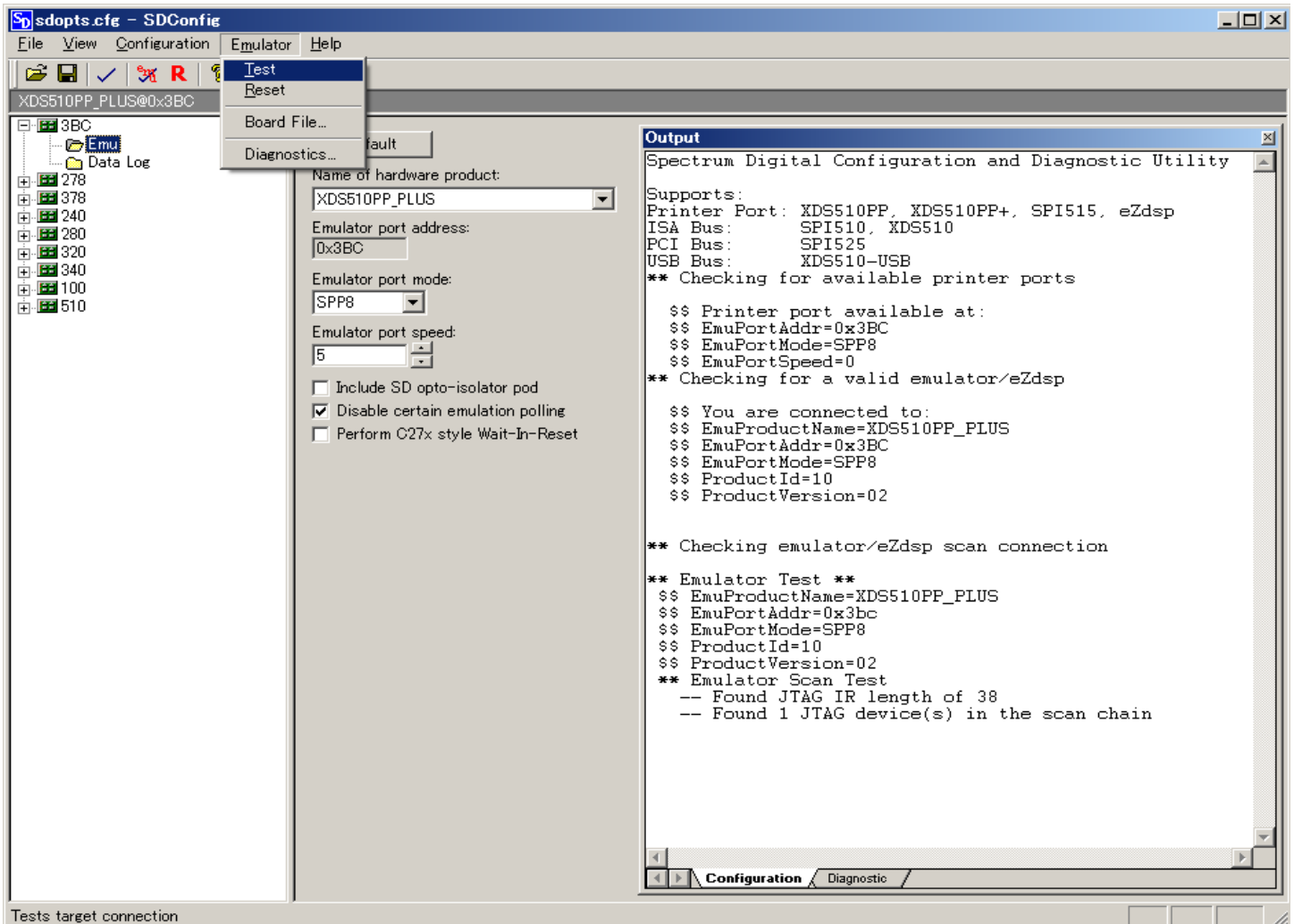
2. SDConfig

Environment

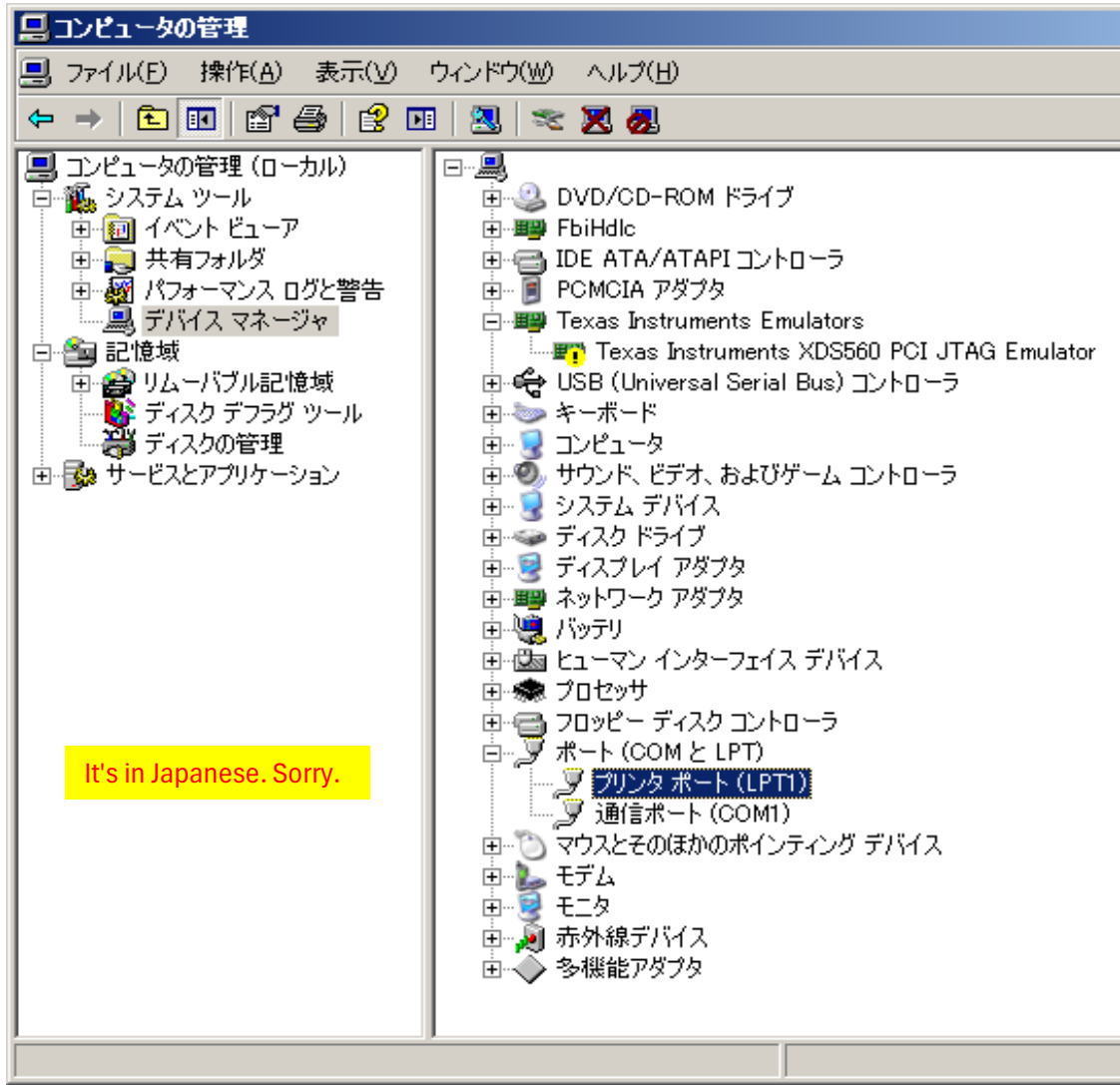
XDS510PP PLUS : Power ON

TMS320C6416 DSK board: Power ON

XDS510PP-Plus JTAG emulator seems to work fine.

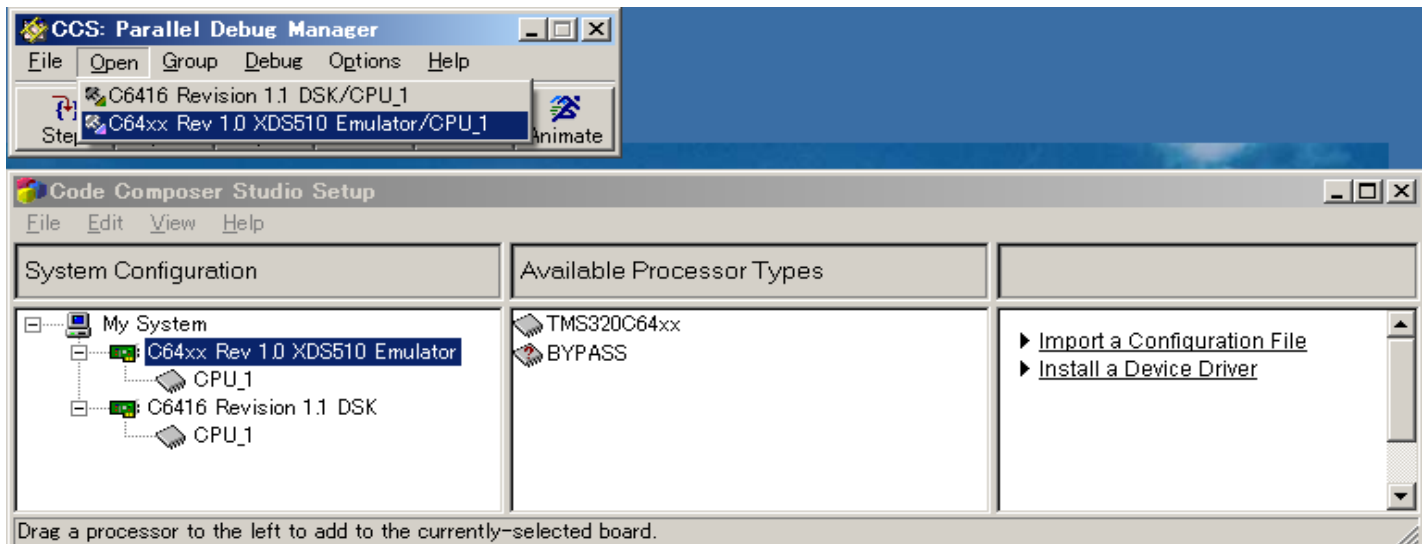


3. Device Manager

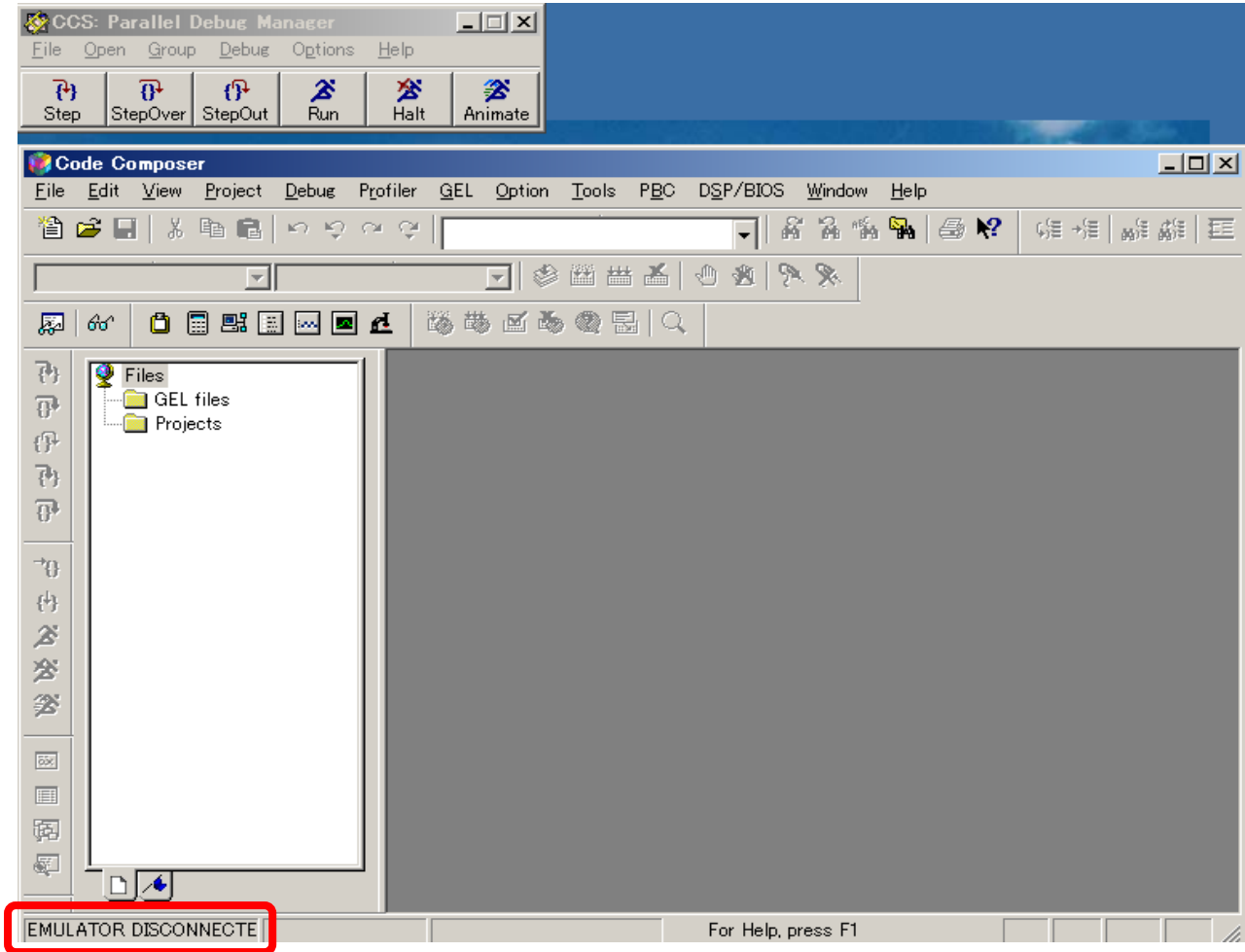


XDS510PP is missing.
Both "XDS510PP" and "target board" are powered on.
ACTIVE LED on the XDS510PP is OFF.
Is this condition normal?

4. Code Composer Studio 2.2 Setup



5. Code Composer Studio 2.2



6. FlashBurn

