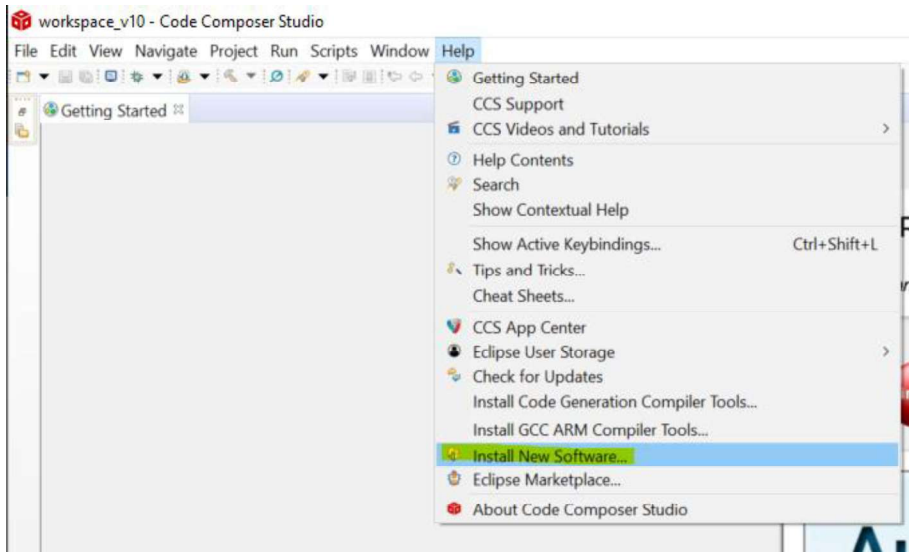


4. CCS Users

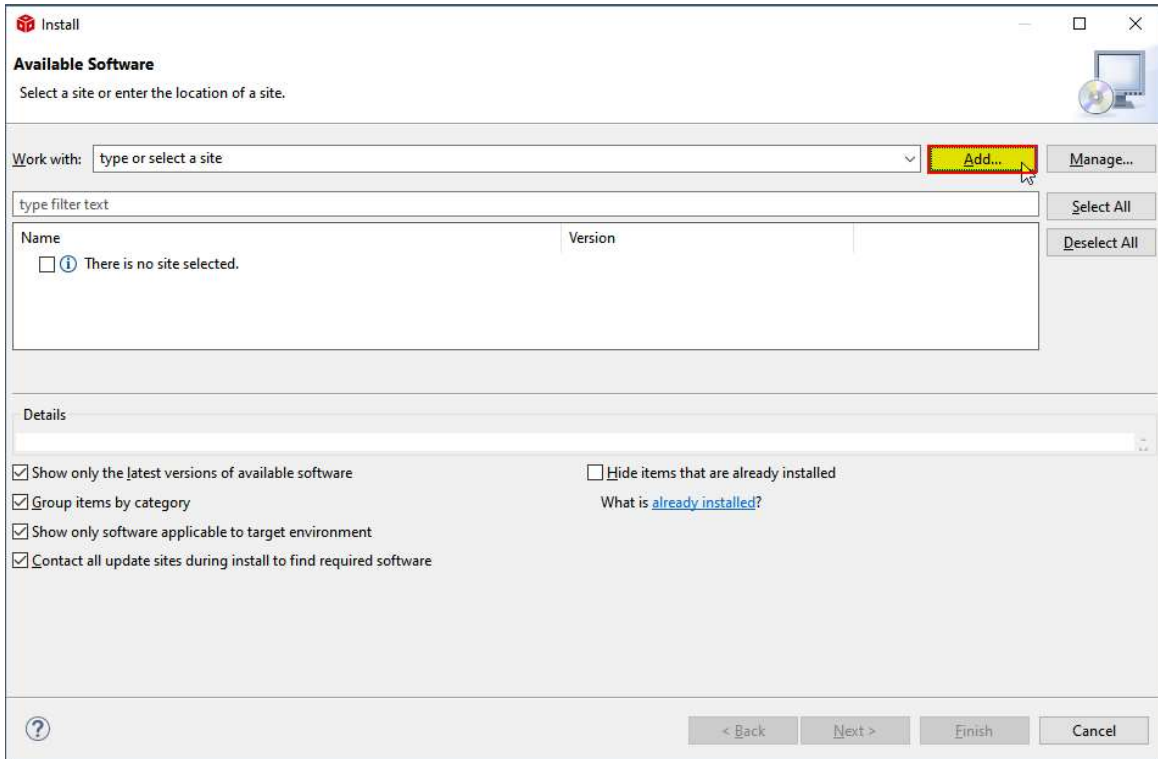
4.1 Install the MSPM0 early access Support Package for CCS

The MSPM0 support package for CCS is installed via an update within CCS using the P2 update system. This allows you to update the support package automatically when new versions are released.

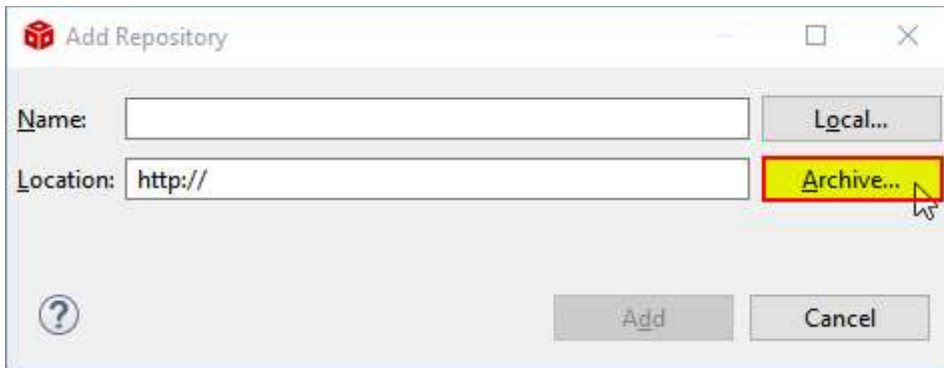
1. CCS must be pre-installed.
2. Download the MSPM0 Support Package (available from TI Drive).
3. Go to **Help** → **Install New Software**.



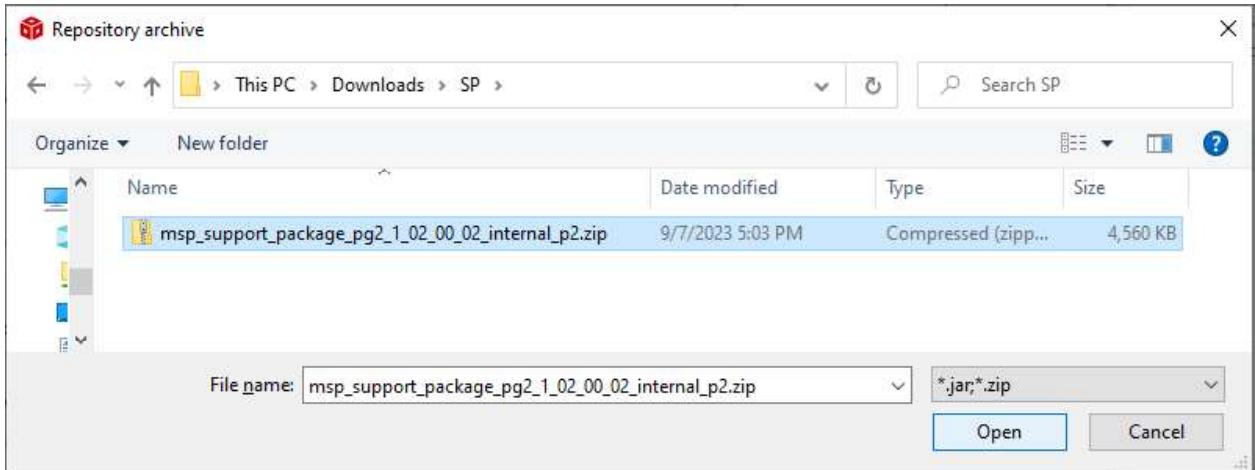
4. In the Available Software window, click **Add...**



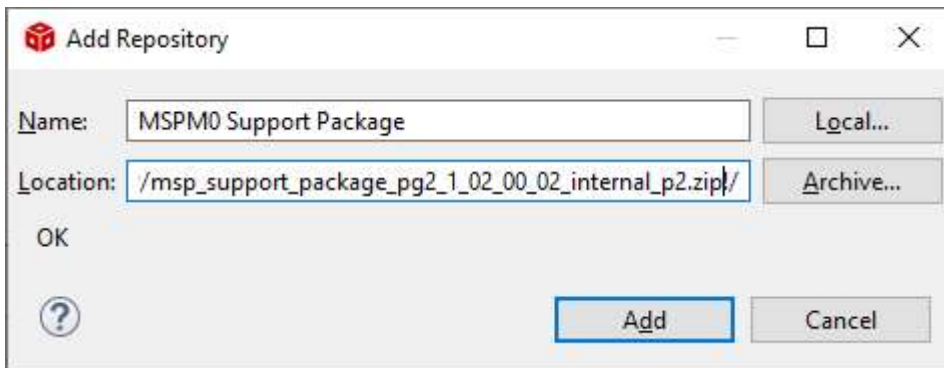
5. Select **Archive**.



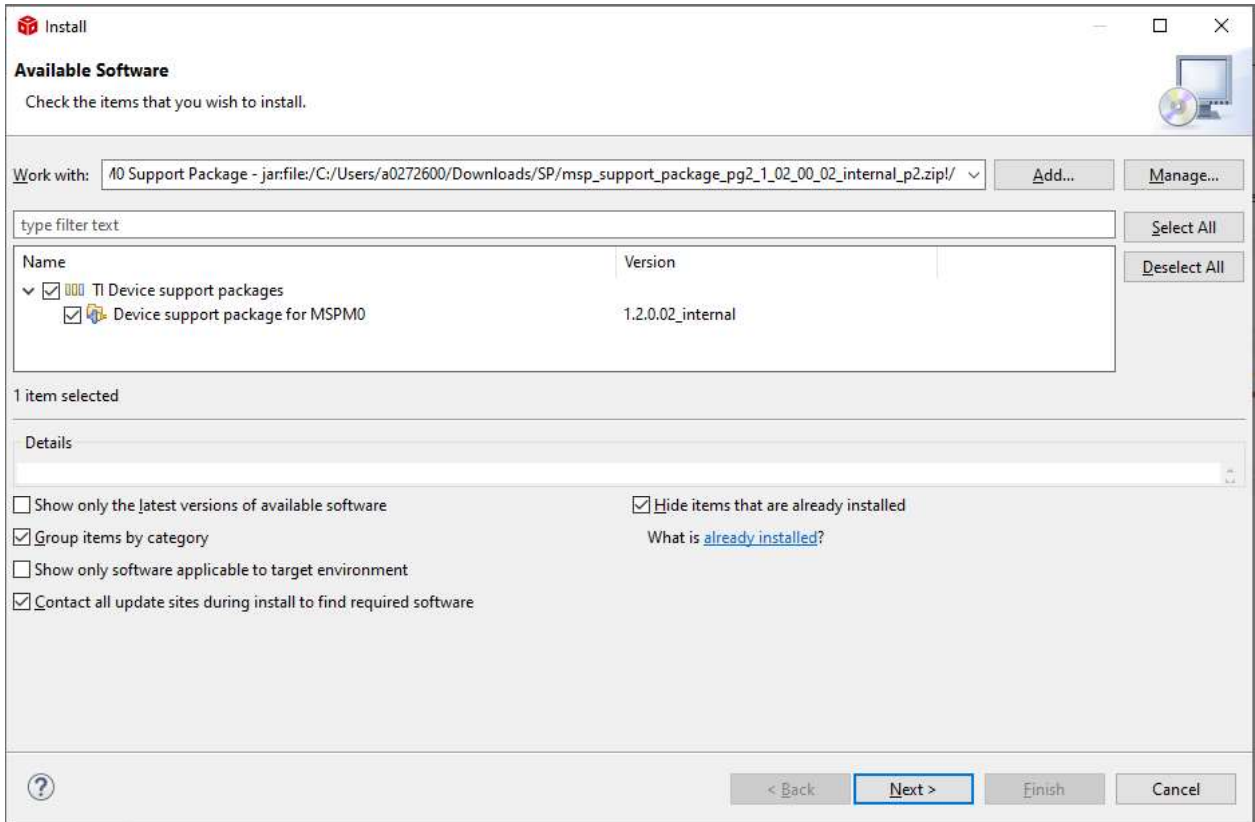
6. Select the zip file of the **MSPM0 Support Package**.



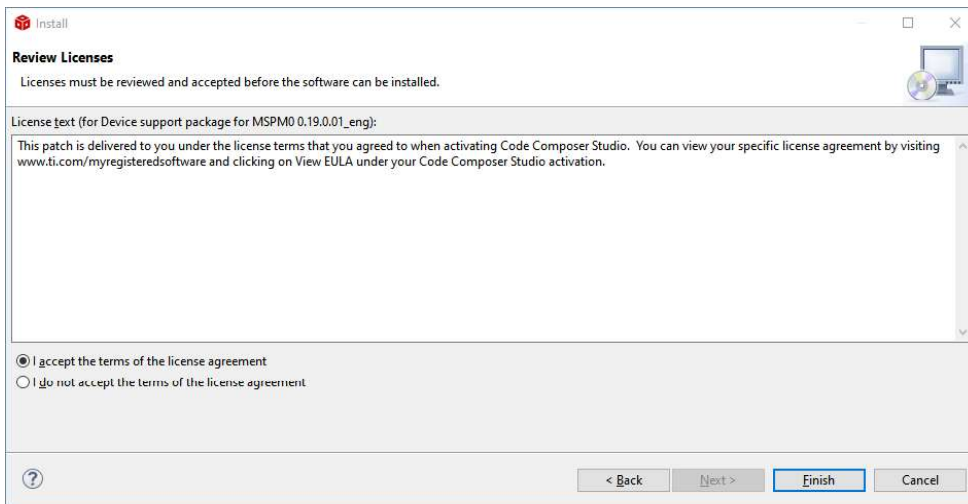
7. Write a **Name** such as *MSPM0 Support Package*



8. The **Work with** box should autofill. In the box underneath, expand the selection next to **TI Device support packages** to confirm **Device support package for MSPM0** is shown, and then click on the boxes on the left to select them. Click **Next**.



9. Approve the license and click **Finish** to start installing.




10. When the download is finished, restart CCS to finish installation.

11. Optionally, check that the installation was successful by clicking on **Help** → **About Code Composer Studio** → **Installation Details** → **Installed Software**.

Code Composer Studio Installation Details

Installed Software | Installation History | Features | Plug-ins | Configuration

mspm0

Name	Version	Id	Provider
 Device support package for MSPM0	1.2.0.02_internal	com.ti.ccstudio.mspm0.devicesupport.fea...	Texas Instrum

< | >

This feature includes the Header and Support Files for MSPM0

? Update... Uninstall... Properties Close