

Hi,

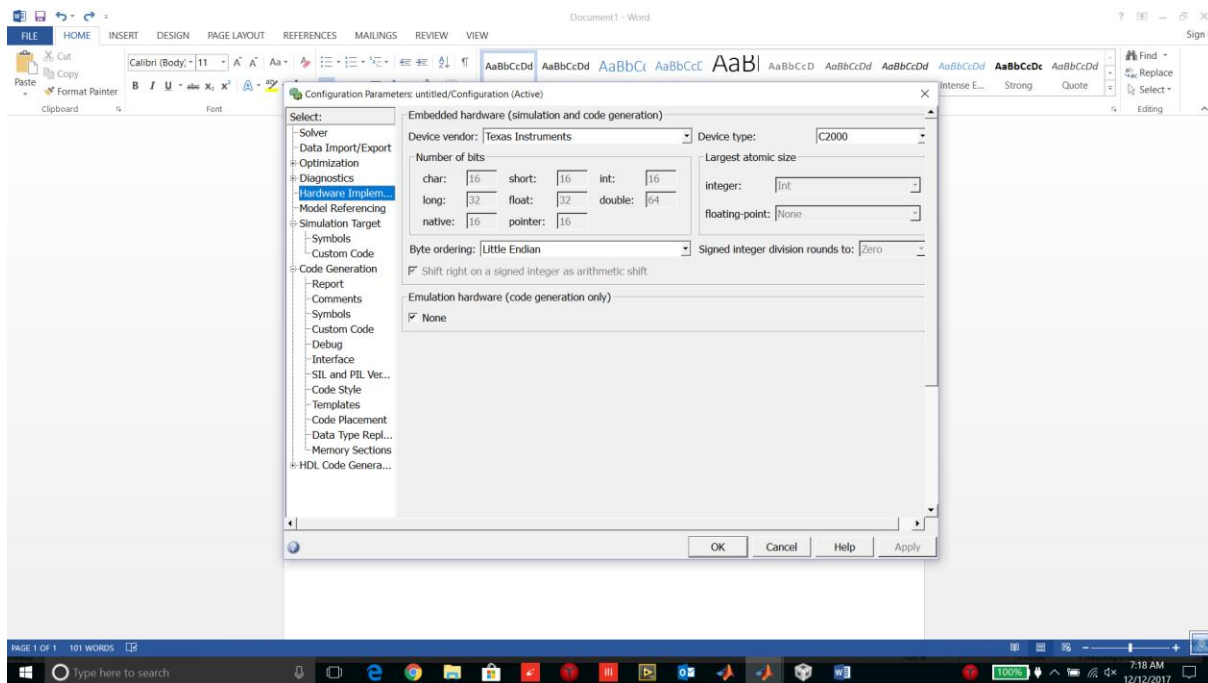
Many thanks for your reply.

I use matlab11 (32 bit) with CSSV7 and I try linking diode and its working very well.

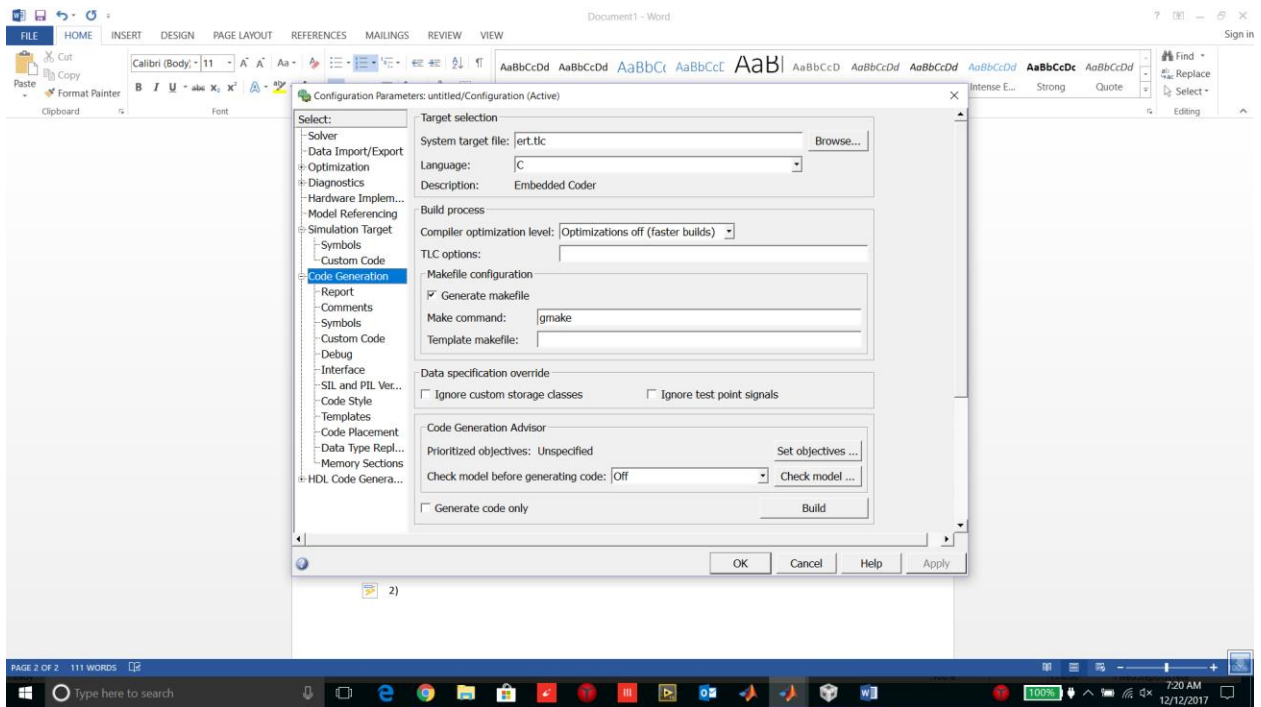
I want to make the monitoring of signal and to make modification of parameters with Simulink: I followed all steps in example but each time I receive error.

Steps which I do:

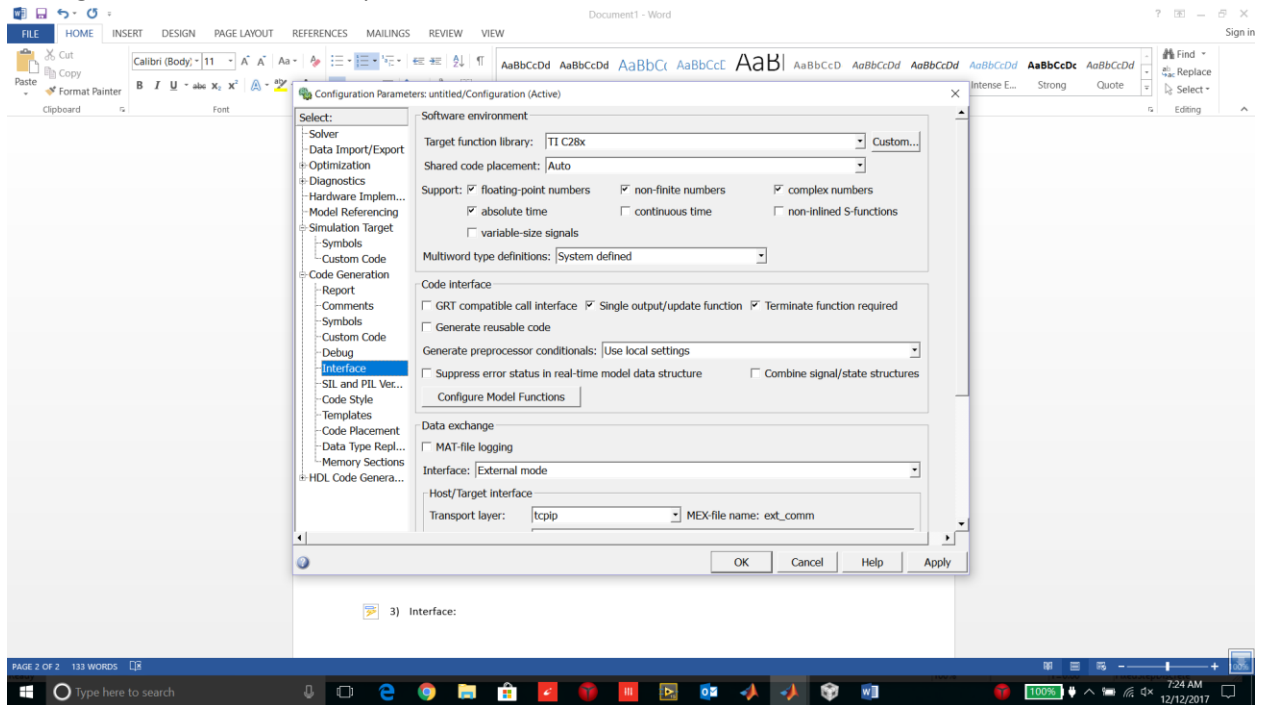
1) Hardware implementation: I define the target as follow



2) Code generation : here I don't know how doing but I followed the example (I make gmake as make command)



- 3) Interface: I select TIC28X and I select external mode  
In Target interface exist two option: I choose serial-win32



And I try to build but each time error

Thanks you for your help

Best regards.

Mohamed A. Fnaiech