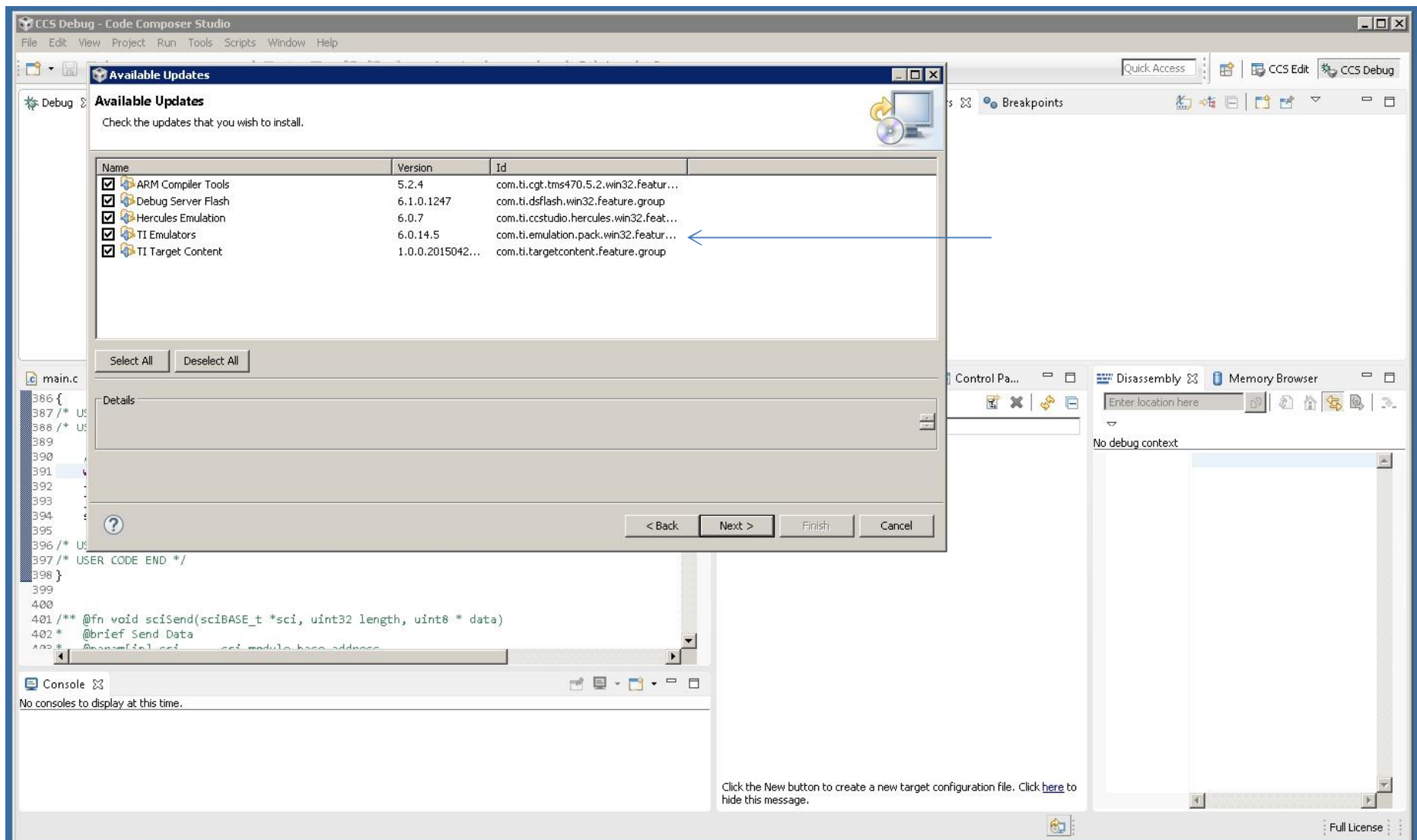


Older CCSv6.0.1 - First TI Emulators 6.0.14.5 shows up as available.

Patch is not displayed yet because it requires 6.0.14.5

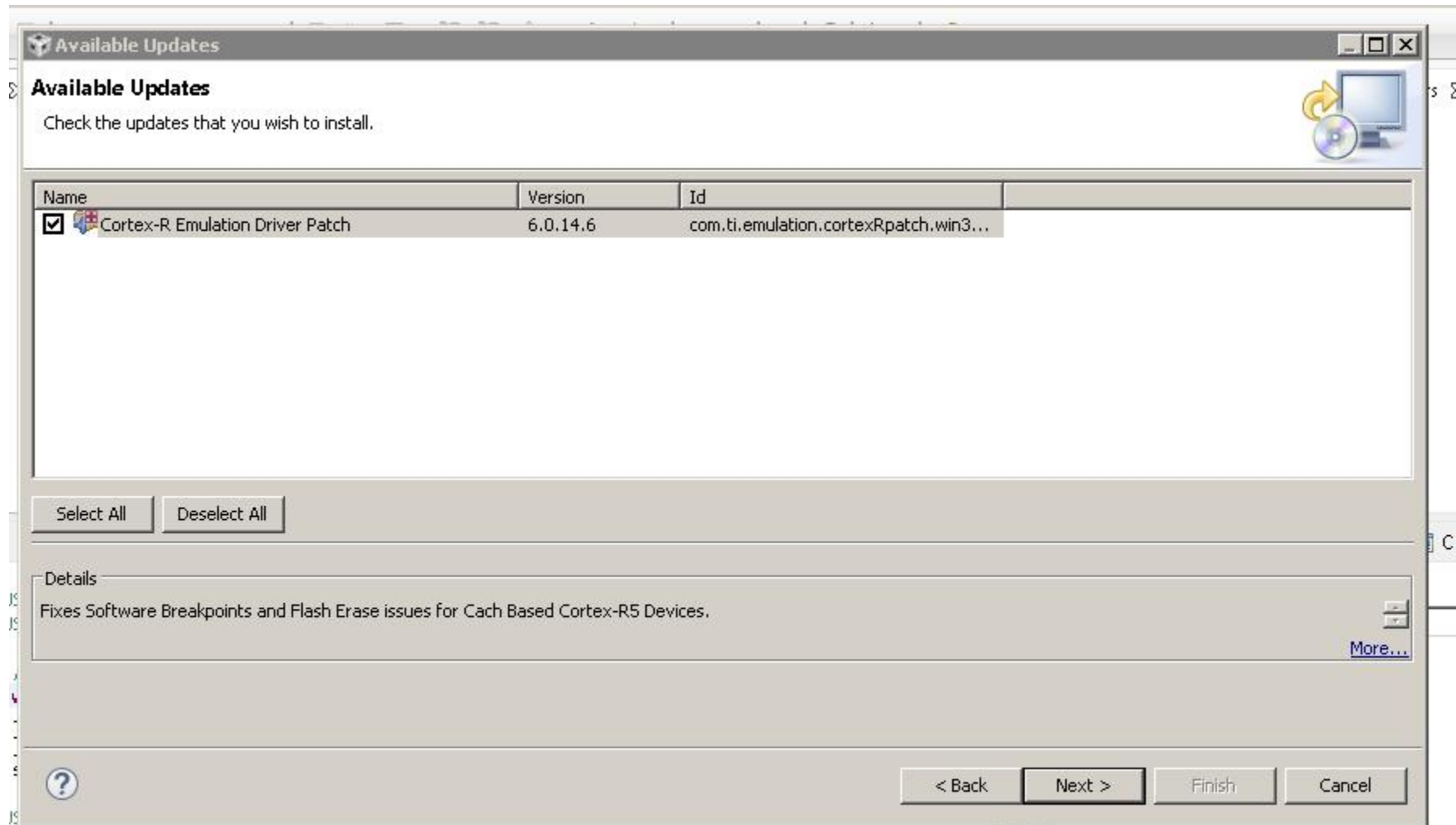
CCS6.1.1.0022 release includes TI Emulators 6.0.14.5 so this step will be skipped...

Patch will immediately be visible (next slide)

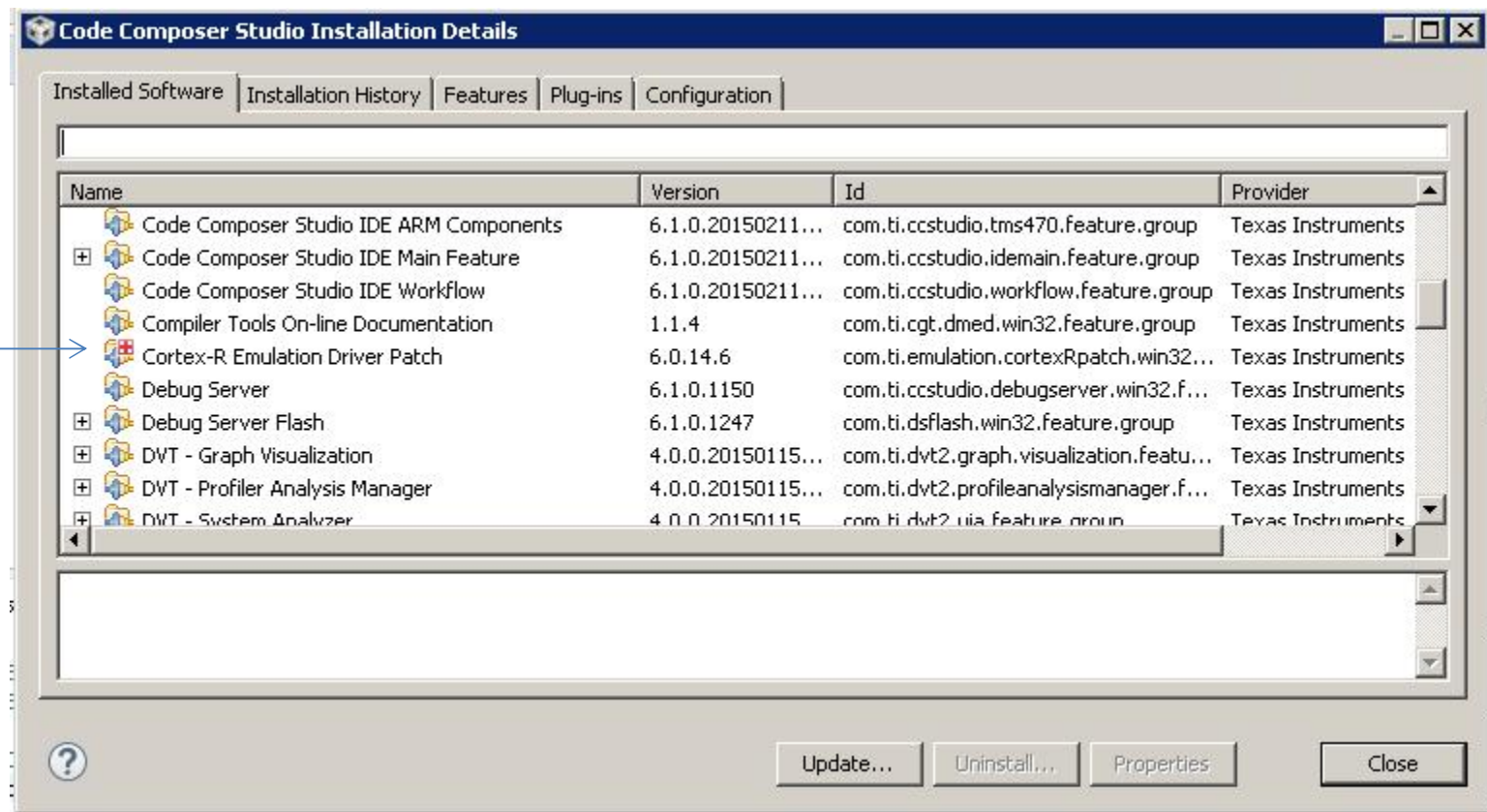


After installing updates (to TI Emulators 6.014.5) and restarting CCS, the next time It checks for updates – patch is visible.

Red Cross indicates it is a 'patch' not a regular update.
Details describe the issue it's addressing.



After installing the patch it is visible in installed software list – on it's own line...



It will 'disappear' when the next full release of TI Emulators is installed in Nov.