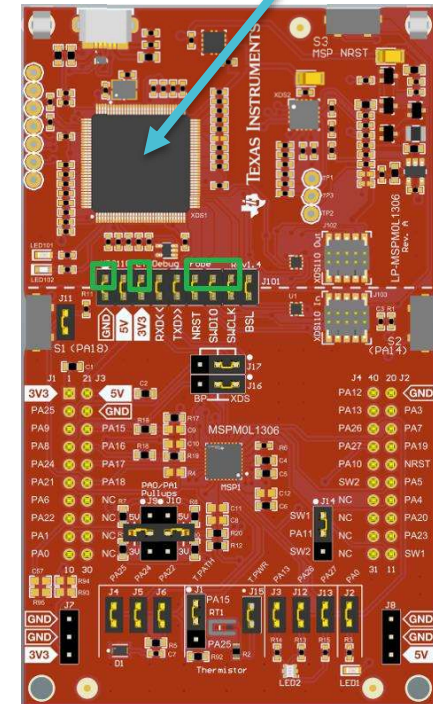


Method 1: Force a DSSM Mass Erase/Factory reset

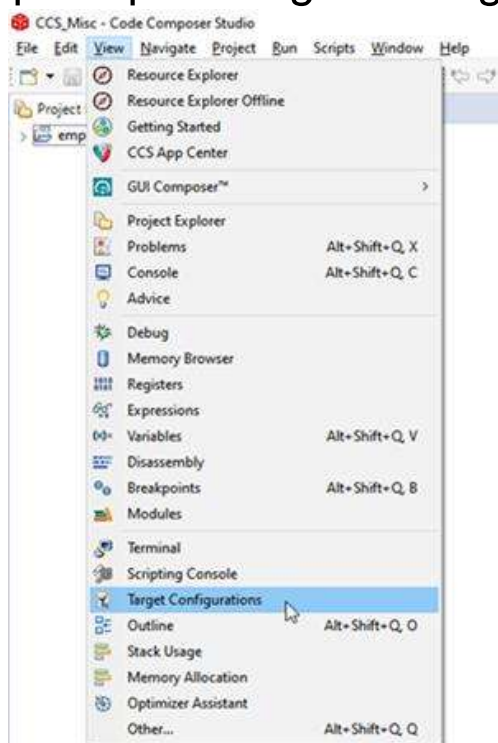
- Hardware connection (based on XDS110)
- Step 1: Remove the jumper cap.
- Step 2: Use a DuPont cable to connect the GND, 3.3V, DIO, CLK, and RST on one side of the burner to the target board. (If using launchpad, there is no need to do Step1,2).

XDS110

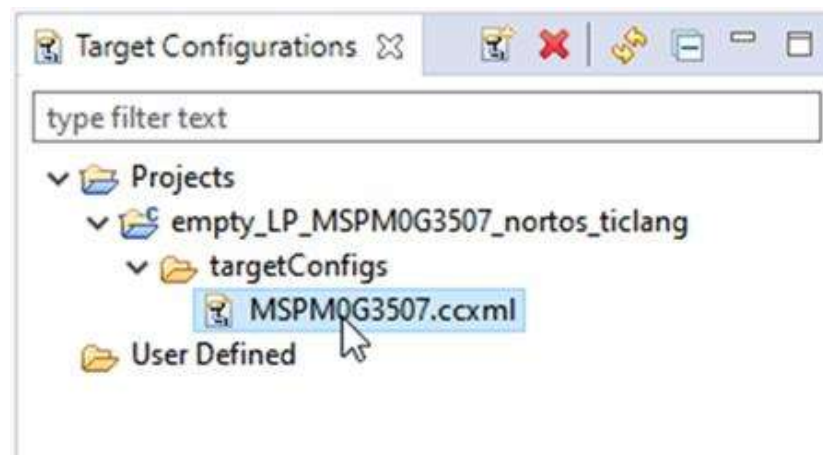


Method 1: Force a DSSM Mass Erase /Factory reset

- Software steps (based on CCS)
 - Step1: Open Target Configurations

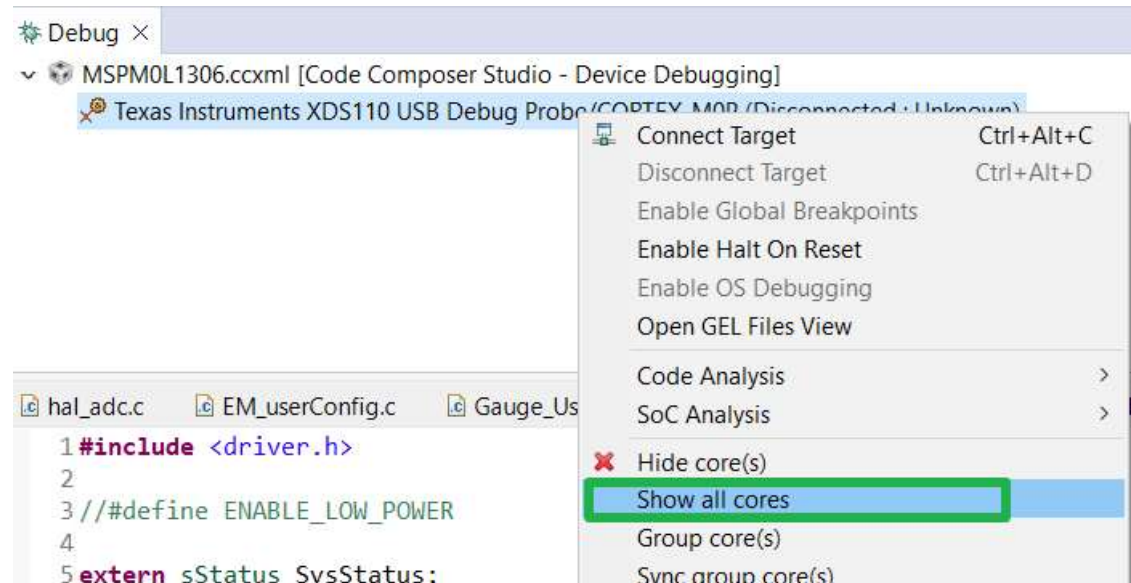
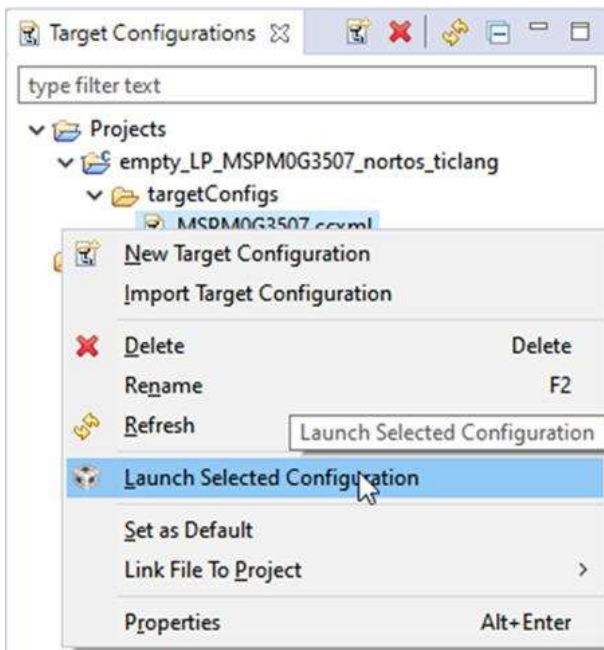


- Step2: Find the ccxml file for the corresponding project



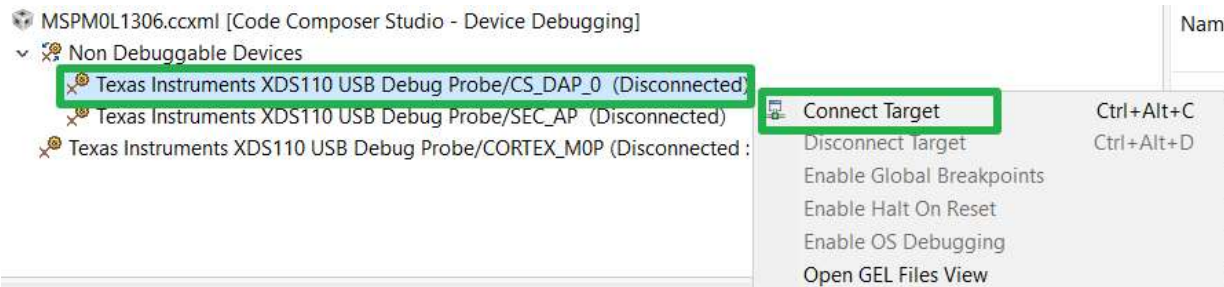
Method 1: Force a DSSM Mass Erase /Factory reset

- Software steps (based on CCS)
 - Step3: Click on launch
 - Step4: Show all cores

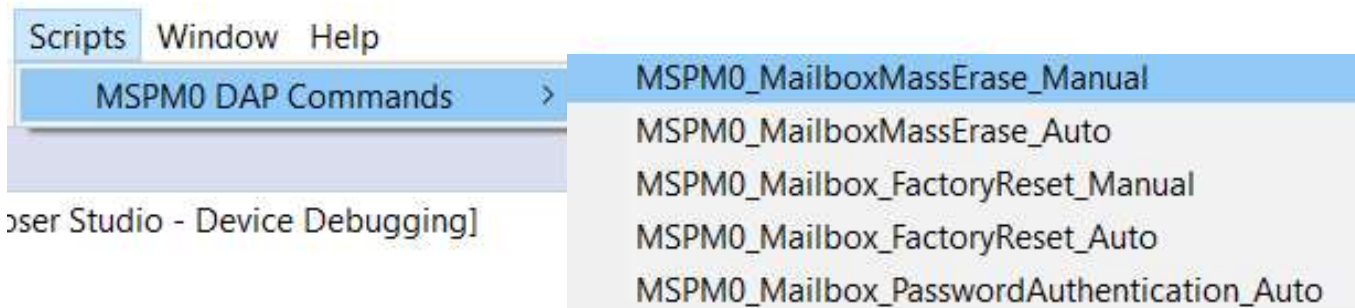


Method 1: Force a DSSM Mass Erase /Factory reset

- Software steps (based on CCS)
 - Step5: Connect DAP (**If not work, please choose method2**)



- Step6: Mass erase or a high level erase: **FactoryReset**

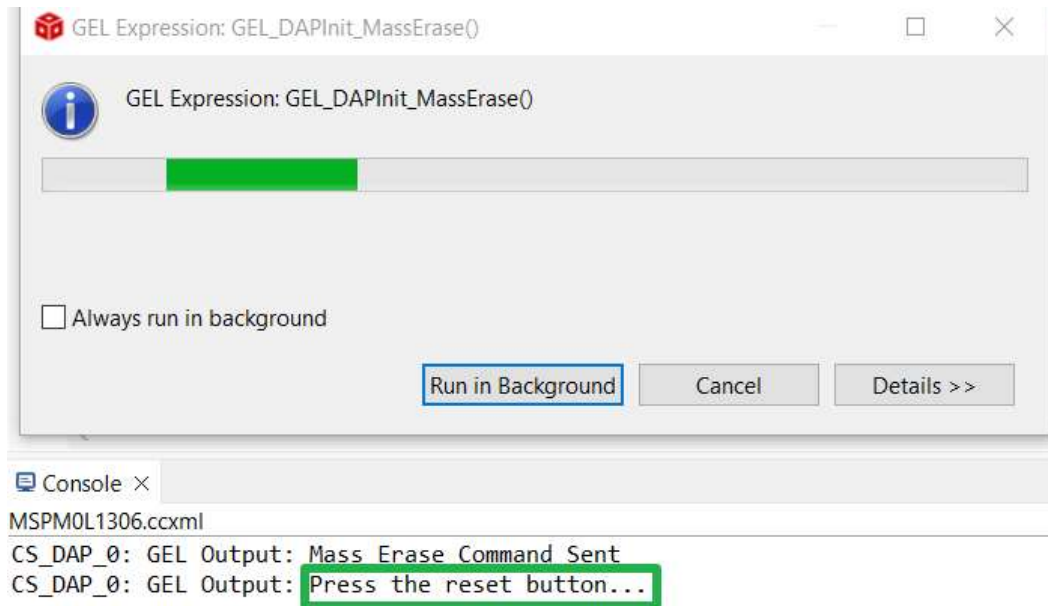


Auto: Means CCS will control the reset pin (Need to connect reset pin to debugger!).
Manual: Means users need to control the reset pin following instruction.

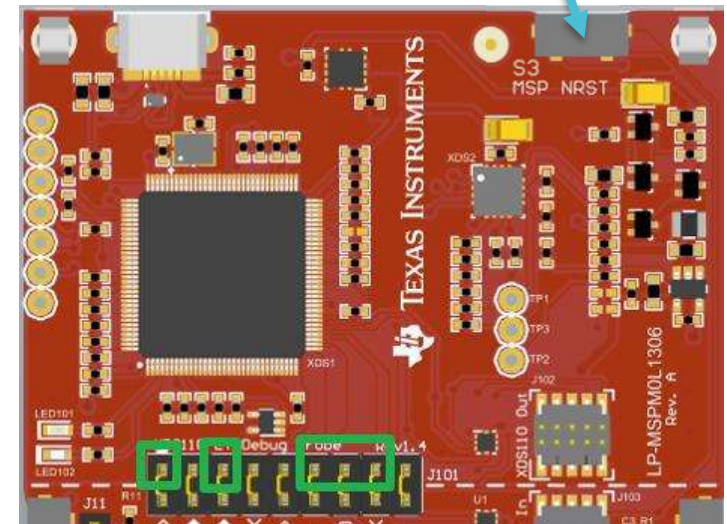
6

Method 1: Force a DSSM Mass Erase

- Software steps (based on CCS)
 - Step7: if see this on Console interface, press the reset button of XDS110.



Reset button



Method 1: Force a DSSM Mass Erase

- Software steps (based on CCS)
 - Step8: Console prompts, click pause, click debug, and burn the code again.

```
Console ×
MSPM0L1306.ccxml
CS_DAP_0: GEL Output: Mass Erase Command Sent
CS_DAP_0: GEL Output: Press the reset button...
CS_DAP_0: GEL Output: Mass erase executed. Please terminate debug session, power-cycle and restart debug session.
```



Method 1: Force a DSSM Mass Erase

- Software steps (based on CCS)
 - Step9: If this error occurs, select Force Reset while **ensuring a reset connection**. Successfully connected.

