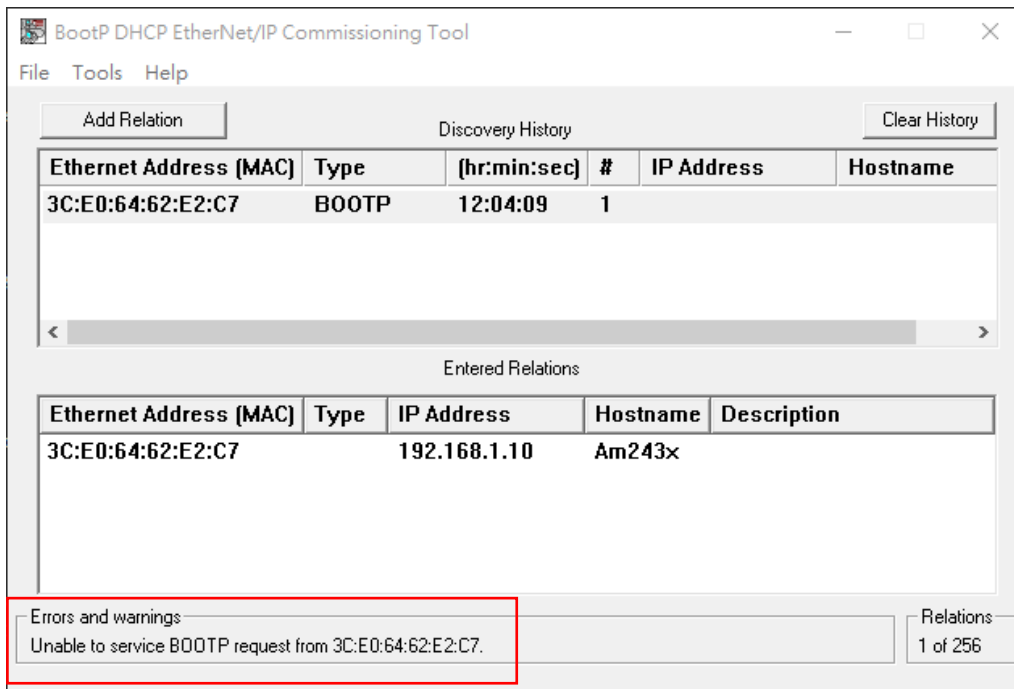


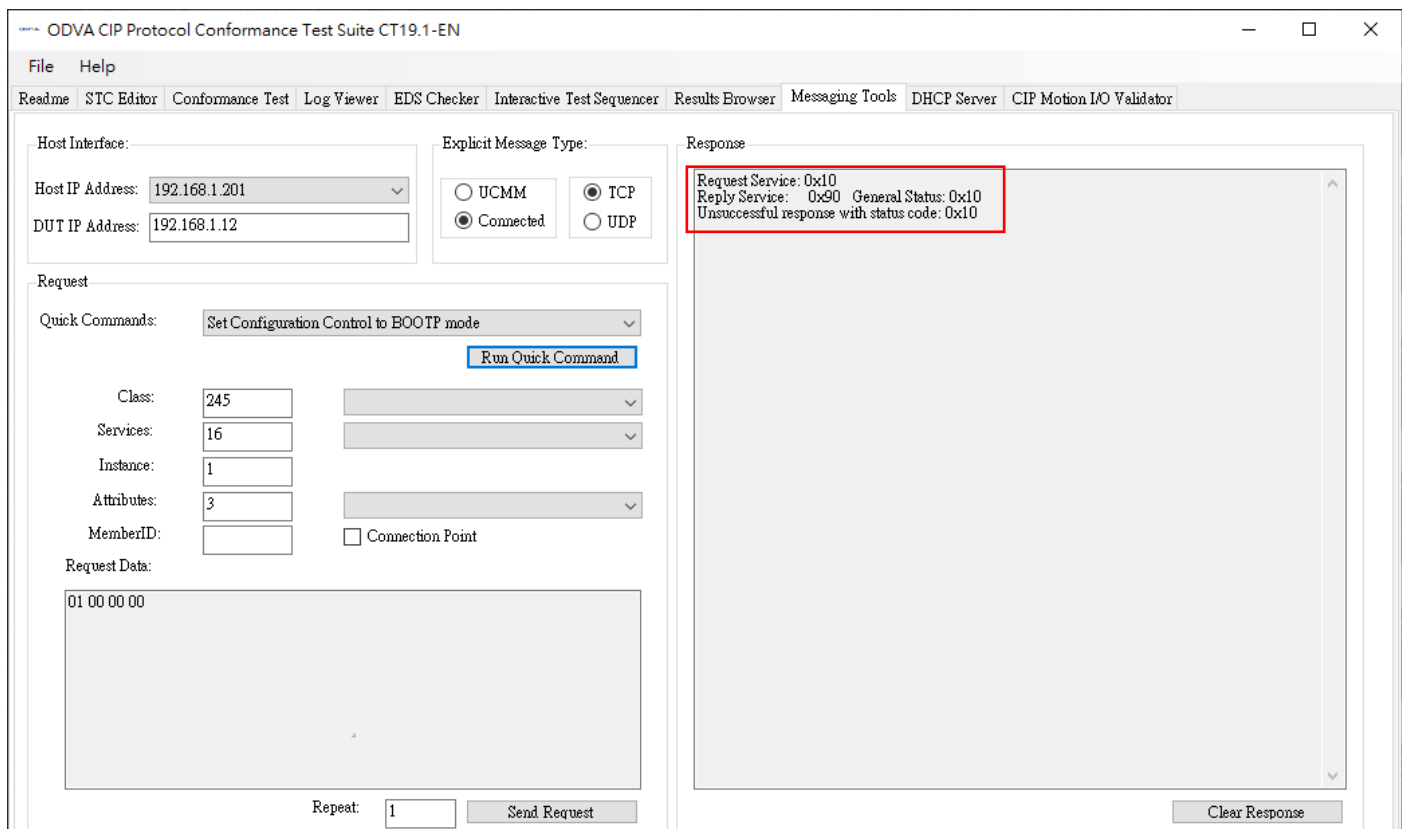
■ BOOTP service question

1. Does the stack support BOOTP service?

We can change the device to the BOOTP mode by CT19.1 Message tool but can't config the IP under BOOTP mode by BOOTP server. (See below figure)

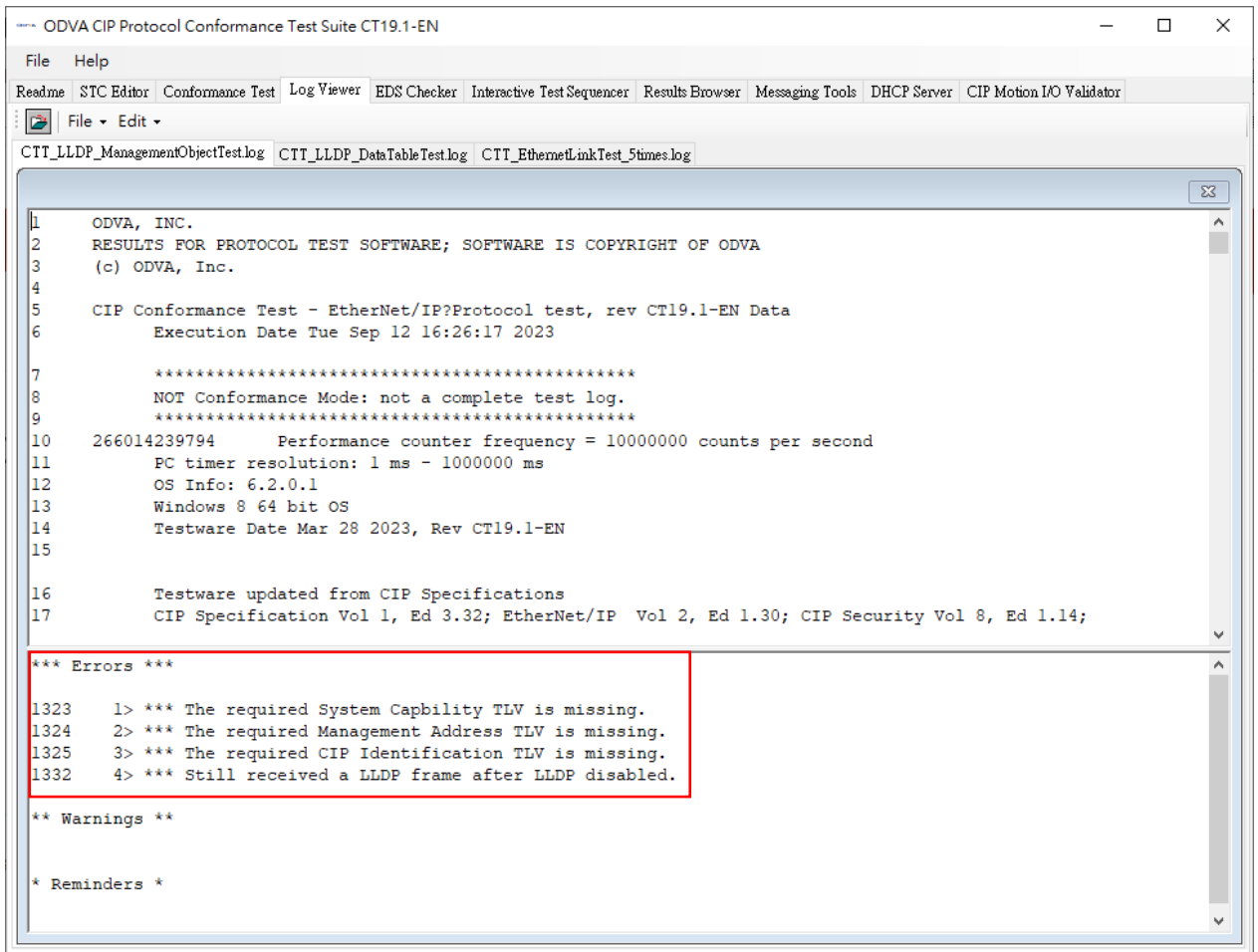


2. If the stack doesn't support BOOTP service, could it be performed as Allen Bradley drives reject mode change and return error state code like below?



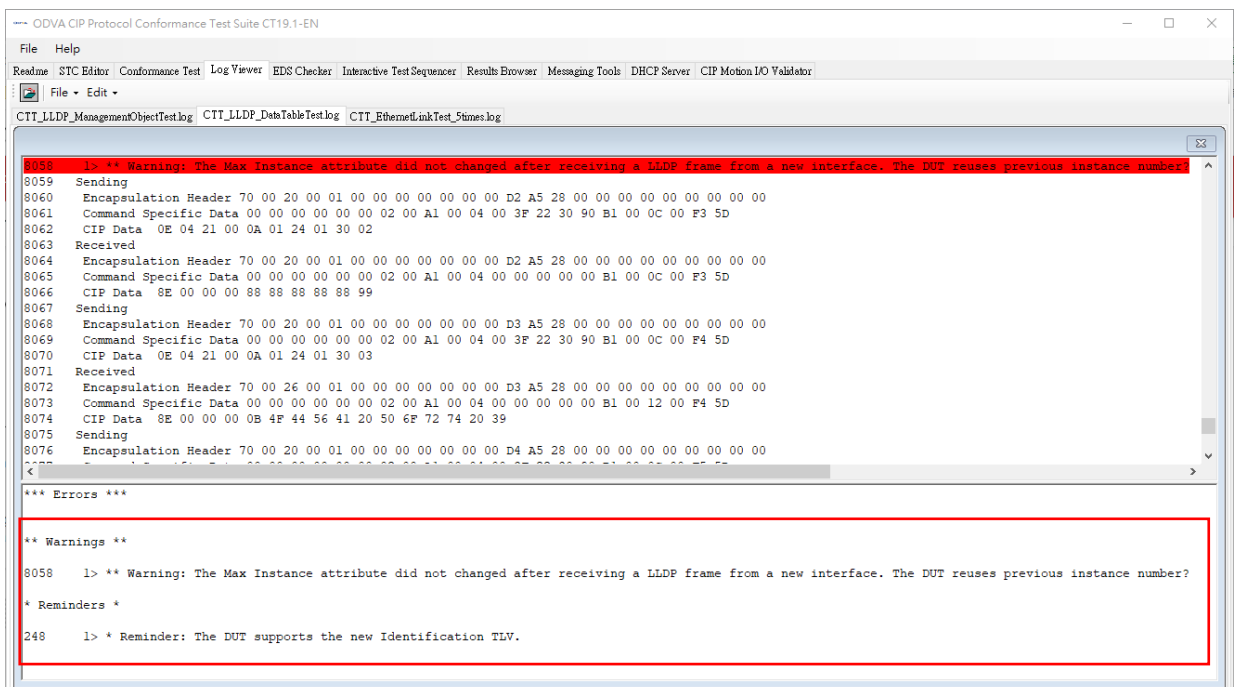
■ CT19.1 Conformance Test: 265-LLDP Management Object Test problems

1. We got 3 new errors about TLV and 1 error about unexpected LLDP frame received. Are they caused by firmware problems or our wrong test configuration or setting?



■ CT19.1 Conformance Test: 266-LLDP Data Table question

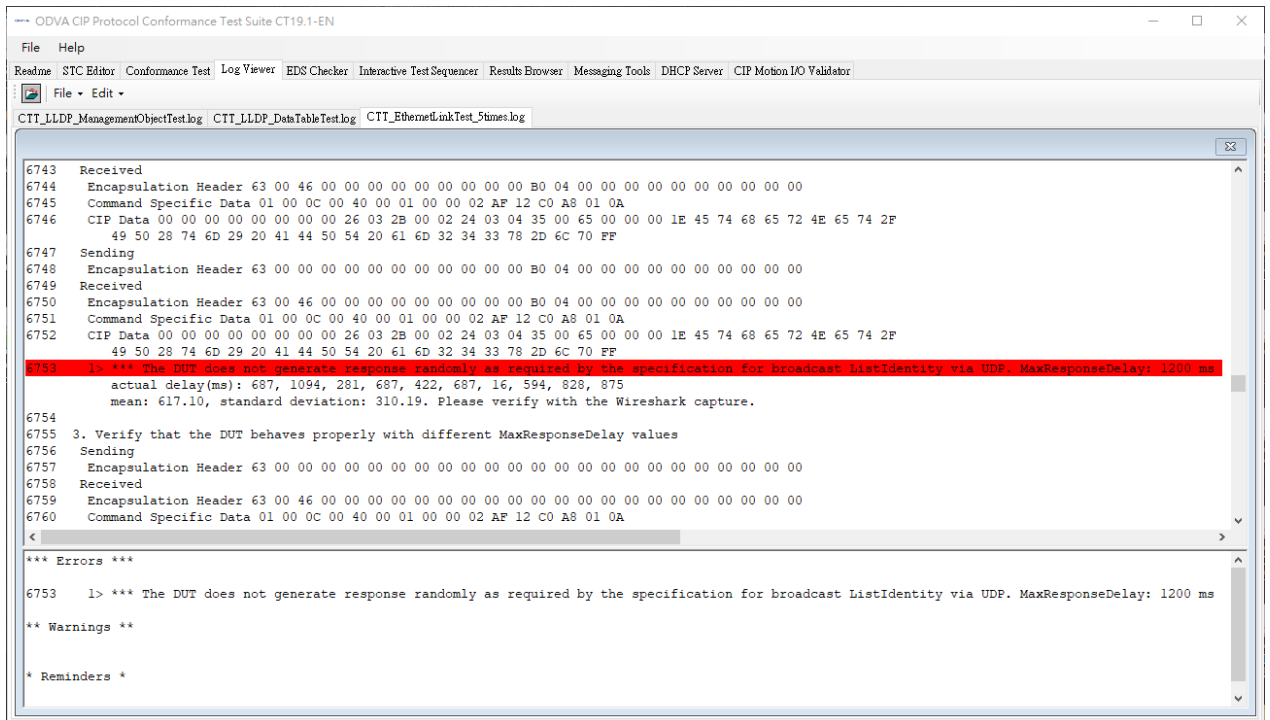
1. We got 1 new warning about the max. instance attribute didn't be changed after receiving a LLDP frame from a new interface. Is it a known issue of firmware version 9.0.0.3?



■ CT19.1 Conformance Test: multiple encapsulation test problem

1. When we run 5 times of encapsulation test continuously, we occasionally get an error as the figure below. We think it may be a firmware bug need to be fix.

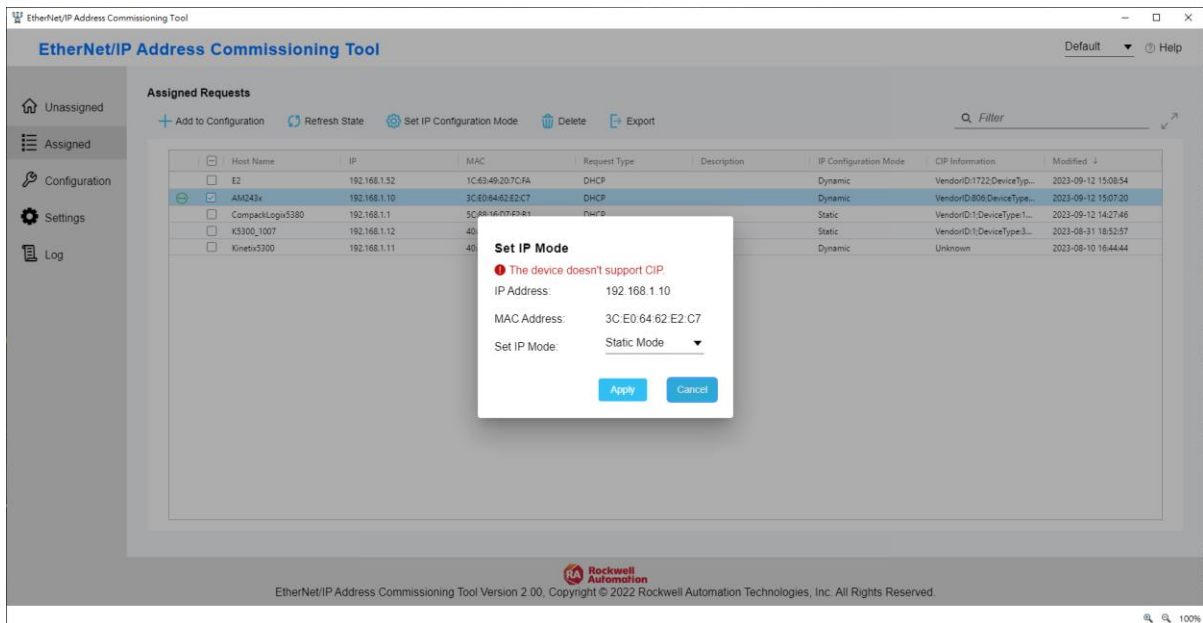
Note: We get this issue by doing the EthernetLink test 5 times with encapsulation test.



■ Can't change the IP configuration mode by Rockwell EtherNet/IP Address Commissioning Tool

1. When we use the tool to send the request to change the IP configuration mode to "Static", the tool responds the device don't support CIP and the mode change fail.

We wonder if it's also a firmware issue, and if it could be fixed.



Address Commissioning Tool

Assigned Requests

[+](#) Add to Configuration [↻](#) Refresh State [⚙](#) Set IP Configuration Mode [🗑](#) Delete [📄](#) Export

<input type="checkbox"/>	Host Name	IP	Request Type	MAC	IP Configuration Mode
<input type="checkbox"/>	E2	192.168.1.52	DHCP	1C:63:49:20:7C:FA	Dynamic
<input checked="" type="checkbox"/>	AM243x	192.168.1.10	DHCP	3C:E0:64:62:E2:C7	Dynamic
<input type="checkbox"/>	CompackLogix5380	192.168.1.1	DHCP	5C:88:16:D7:F2:B1	Static
<input type="checkbox"/>	K5300_1007	192.168.1.12	DHCP	40:41:01:DF:4D:0F	Static

Set IP Mode

⚠ The device doesn't support CIP.

IP Address: 192.168.1.10

MAC Address: 3C:E0:64:62:E2:C7

Set IP Mode: Static Mode ▼

Apply

Cancel