

I am using [BP-CC3301MOD, LP-AM243]
to check the operation of a sample project (cc3xxx_network_terminal),
but an error occurs.
Please tell me the cause of the error and how to fix it.

1. environment

software

CCS 12.8.1.00005

cc33xx_mcu_package_R5

mcu_plus_sdk_am243x_08_05_00_24

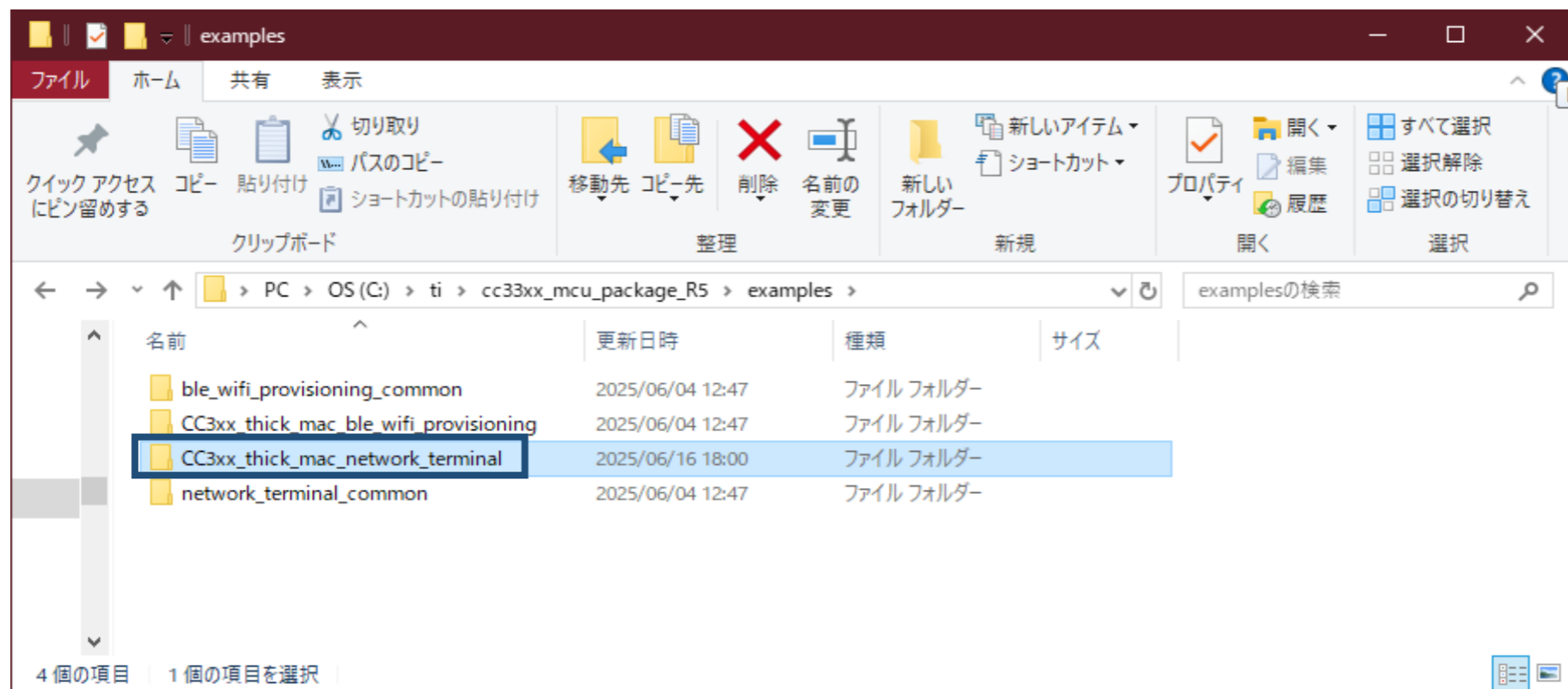
Python 3.13.4

Evaluation Kit

BP-CC3301MOD Rev E1

LP-AM243

2. Build





import , Build ---> success

The screenshot displays the Code Composer Studio interface for the project `cc3xxx_mcu_example_2 - cc3xxx_network_terminal/main.c`. The **Project Explorer** on the left shows the project structure, with the **Binaries** folder expanded to highlight `cc3xxx_network_terminal.out - [ARM/le]`. The central editor shows the `main.c` file, which includes initialization functions and a task creation routine. The **Console** window at the bottom shows the build output, including the CDT Build Console and the final message `**** Build Finished ****`. The **Target Configuration** panel on the right shows the selected target `AM243x_XDS110.ccxml`. An **Updates Available** notification is visible in the bottom right corner.

```
51 {
52     return 0;
53 }
54
55 void freertos_main(void *args)
56 {
57     network_terminal_entry(NULL);
58     vTaskDelete(NULL);
59 }
60
61
62
63 int main()
64 {
65     /* init SOC specific modules */
66     System_init();
67     Board_init();
68
69
70
71     /* This task is created at highest priority, it should create more
72     gMainTask = xTaskCreateStatic( freertos_main, /* Pointer to the
73     "freertos_main", /* Text name for the
74     MAIN_TASK_SIZE, /* Stack depth in u
75     NULL, /* We are not using
76     MAIN_TASK_PRI, /* task priority, 0
77     gMainTaskStack, /* pointer to stack
78     &gMainTaskObj ); /* pointer to stati
79
80     configASSERT(gMainTask != NULL);
81
82     /* Start the scheduler to start the tasks executing. */
83     vTaskStartScheduler();
84
85     /* The following line should never be reached because vTaskStartSc
86     will only return if there was not enough FreeRTOS heap memory avai
87     create the Idle and (if configured) Timer tasks. Heap management,
88     techniques for trapping heap exhaustion, are described in the book
89     DebugP_assertNoLog(0);
90
91     return 0;
92 }
```

CDT Build Console [cc3xxx_network_terminal]
Generating certificate for C:/SVN/sanden/ws/cc3xxx_mcu_example_2/cc3xxx_network_terminal/build_cc3xx_re.
C:\ti\ccs1281\ccs\utils\cygwin\rm -f C:/SVN/sanden/ws/cc3xxx_mcu_example_2/cc3xxx_network_terminal/build
Boot image: am243x:r5fss0-0:freertos:ti-arm-clang C:/SVN/sanden/ws/cc3xxx_mcu_example_2/cc3xxx_network
.
Boot image: am243x:r5fss0-0:freertos:ti-arm-clang C:/SVN/sanden/ws/cc3xxx_mcu_example_2/cc3xxx_network
.
**** Build Finished ****

Updates Available
Updates are ava
Click to review a

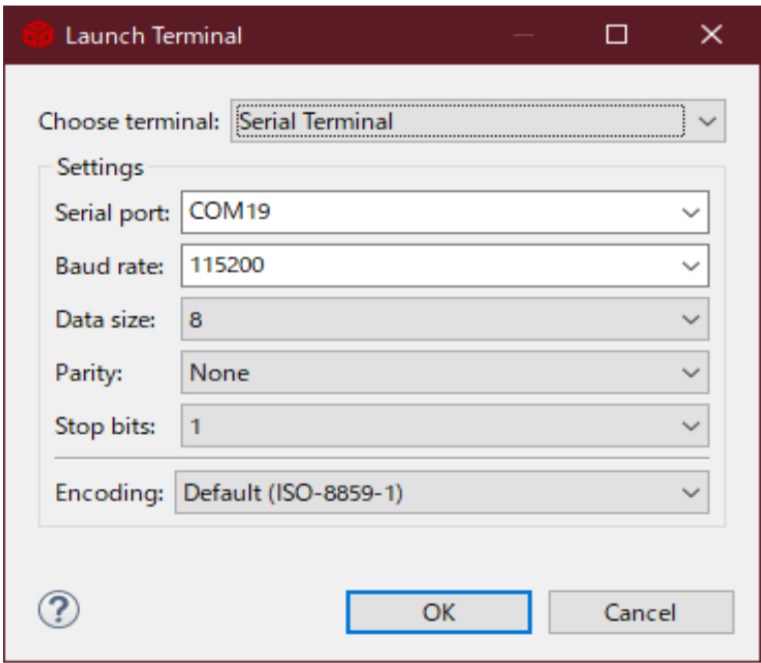
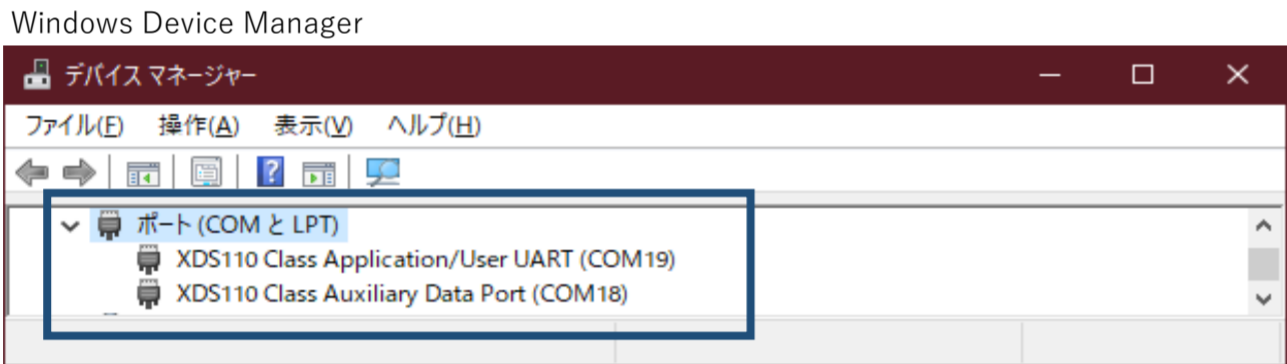
3. EVM Setup

Reference sites
https://software-dl.ti.com/mcu-plus-sdk/esd/AM243X/08_05_00_24/exports/docs/api_guide_am243x/EVM_SETUP_PAGE.html

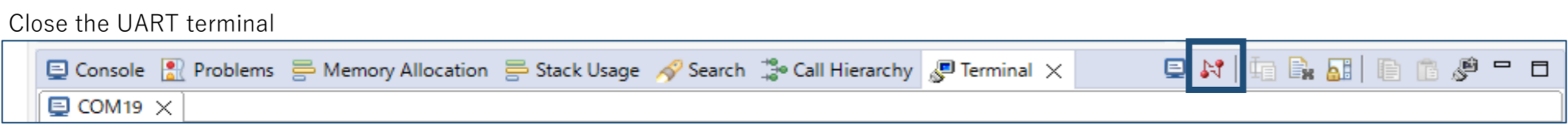
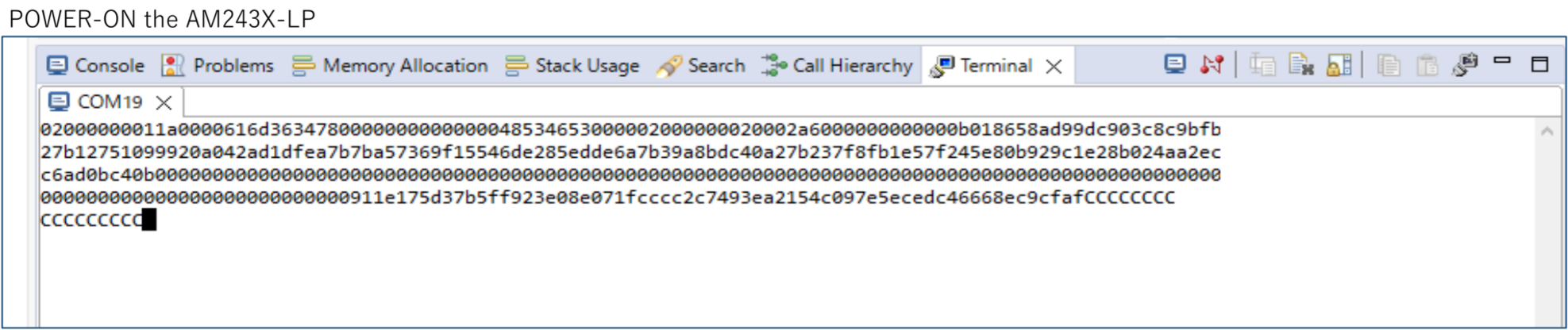
Cable Connections
Power Indication LEDs



Setup UART Terminal



Flash SOC Initialization Binary



flash the SOC initialization binary to the LP

```
コマンド プロンプト
C:\ti\mcu_plus_sdk_am243x_08_05_00_24\tools\boot>
C:\ti\mcu_plus_sdk_am243x_08_05_00_24\tools\boot>
C:\ti\mcu_plus_sdk_am243x_08_05_00_24\tools\boot>python uart_uniflash.py -p COM19 --cfg=sbl_prebuilt/am243x-lp/default_sbl_null.cfg

Parsing config file ...
Parsing config file ... SUCCESS. Found 2 command(s) !!!

Executing command 1 of 2 ...
Found flash writer ... sending sbl_prebuilt/am243x-lp/sbl_uart_uniflash.release.tiimage
Sending sbl_prebuilt/am243x-lp/sbl_uart_uniflash.release.tiimage: 80%|          | 235641/294772 [00:22<00:05, 11205.32bytes/s]s
end error: expected ACK; got b'\x18' for block 229
Sending sbl_prebuilt/am243x-lp/sbl_uart_uniflash.release.tiimage: 80%|          | 236670/294772 [00:22<00:05, 11205.32bytes/s]s
end error: expected ACK; got b'\x18' for block 229
Sending sbl_prebuilt/am243x-lp/sbl_uart_uniflash.release.tiimage: 81%|          | 237699/294772 [00:22<00:05, 11205.32bytes/s]s
end error: expected ACK; got b'0' for block 229
Sending sbl_prebuilt/am243x-lp/sbl_uart_uniflash.release.tiimage: 81%|          | 238728/294772 [00:24<00:17, 3128.69bytes/s]s
end error: expected ACK; got b'2' for block 229
Sending sbl_prebuilt/am243x-lp/sbl_uart_uniflash.release.tiimage: 81%|          | 239757/294772 [00:24<00:17, 3128.69bytes/s]s
end error: expected ACK; got b'0' for block 229
Sending sbl_prebuilt/am243x-lp/sbl_uart_uniflash.release.tiimage: 82%|          | 240786/294772 [00:24<00:17, 3128.69bytes/s]s
end error: expected ACK; got b'0' for block 229
Sending sbl_prebuilt/am243x-lp/sbl_uart_uniflash.release.tiimage: 82%|          | 241815/294772 [00:24<00:11, 4419.05bytes/s]s
end error: expected ACK; got b'0' for block 229
Sending sbl_prebuilt/am243x-lp/sbl_uart_uniflash.release.tiimage: 82%|          | 242844/294772 [00:24<00:11, 4419.05bytes/s]s
end error: expected ACK; got b'0' for block 229
Sending sbl_prebuilt/am243x-lp/sbl_uart_uniflash.release.tiimage: 83%|          | 243873/294772 [00:24<00:09, 5253.87bytes/s]s
end error: expected ACK; got b'0' for block 229
Sending sbl_prebuilt/am243x-lp/sbl_uart_uniflash.release.tiimage: 83%|          | 244902/294772 [00:24<00:09, 5253.87bytes/s]s
end error: expected ACK; got b'0' for block 229
Sending sbl_prebuilt/am243x-lp/sbl_uart_uniflash.release.tiimage: 83%|          | 245931/294772 [00:24<00:07, 6138.89bytes/s]s
end error: expected ACK; got b'0' for block 229
send error: NAK received 11 times, aborting.
Sending sbl_prebuilt/am243x-lp/sbl_uart_uniflash.release.tiimage: 83%|          | 245933/294772 [00:25<00:07, 6138.89bytes/s]
[ERROR] KMODEM send failed, no response OR incorrect response from EVM OR cancelled by user,
power cycle EVM and run this script again !!!

C:\ti\mcu_plus_sdk_am243x_08_05_00_24\tools\boot>
```

ERROR

Please tell me the cause of the error and how to fix it

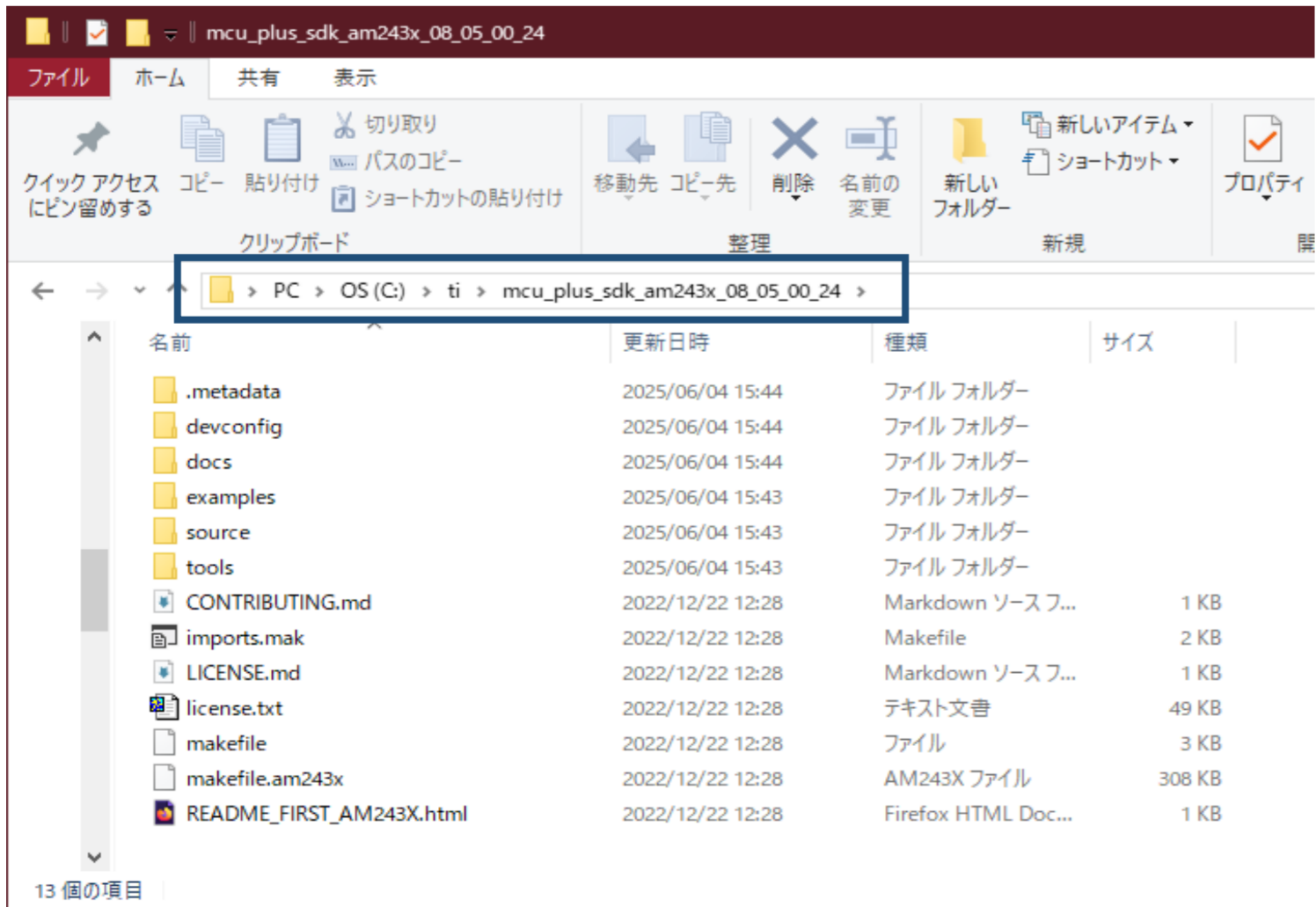
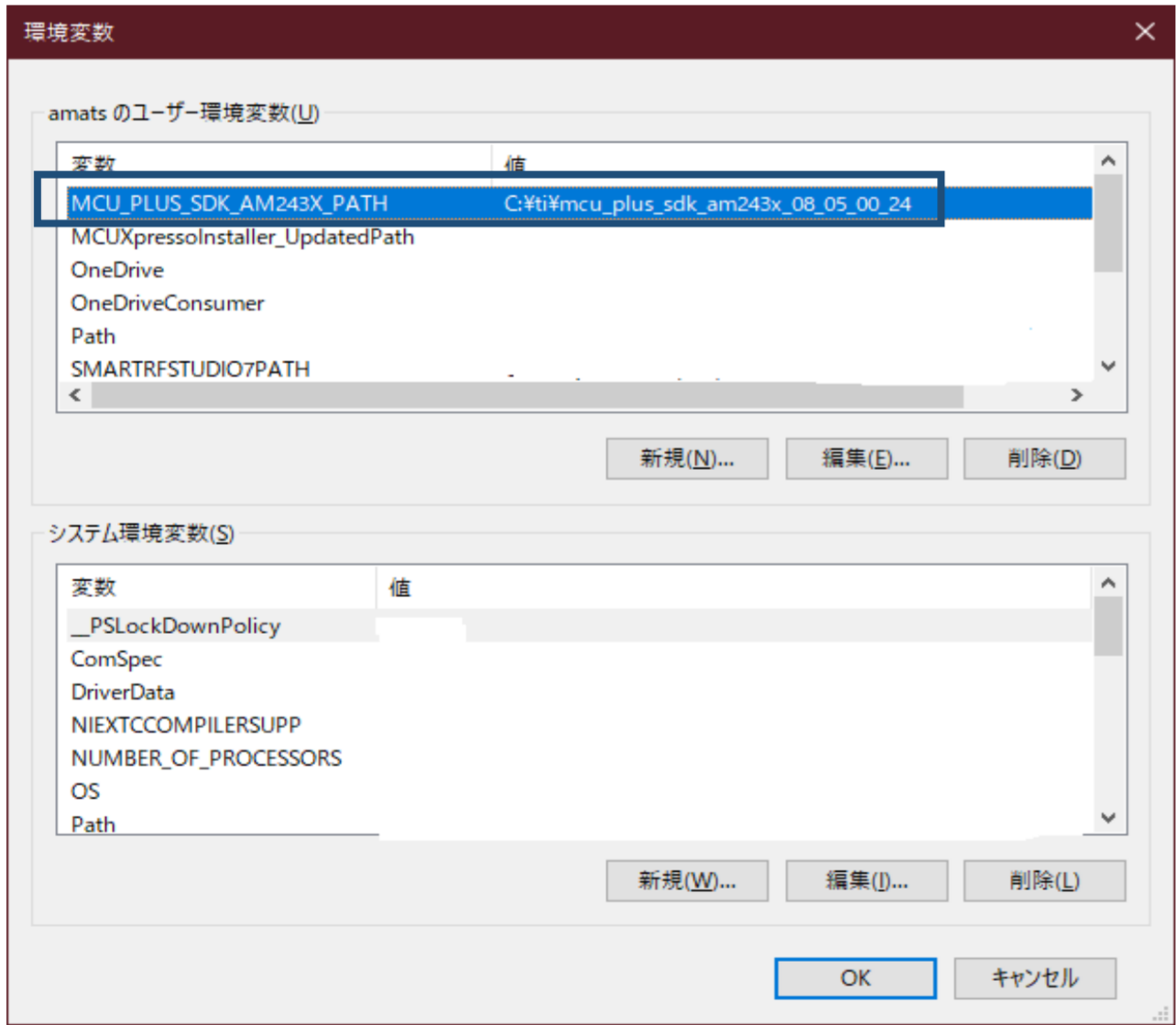


SOC Initialization Using CCS Scripting

Environment Variable

MCU_PLUS_SDK_AM243X_PATH

C:\ti\mcu_plus_sdk_am243x_08_05_00_24

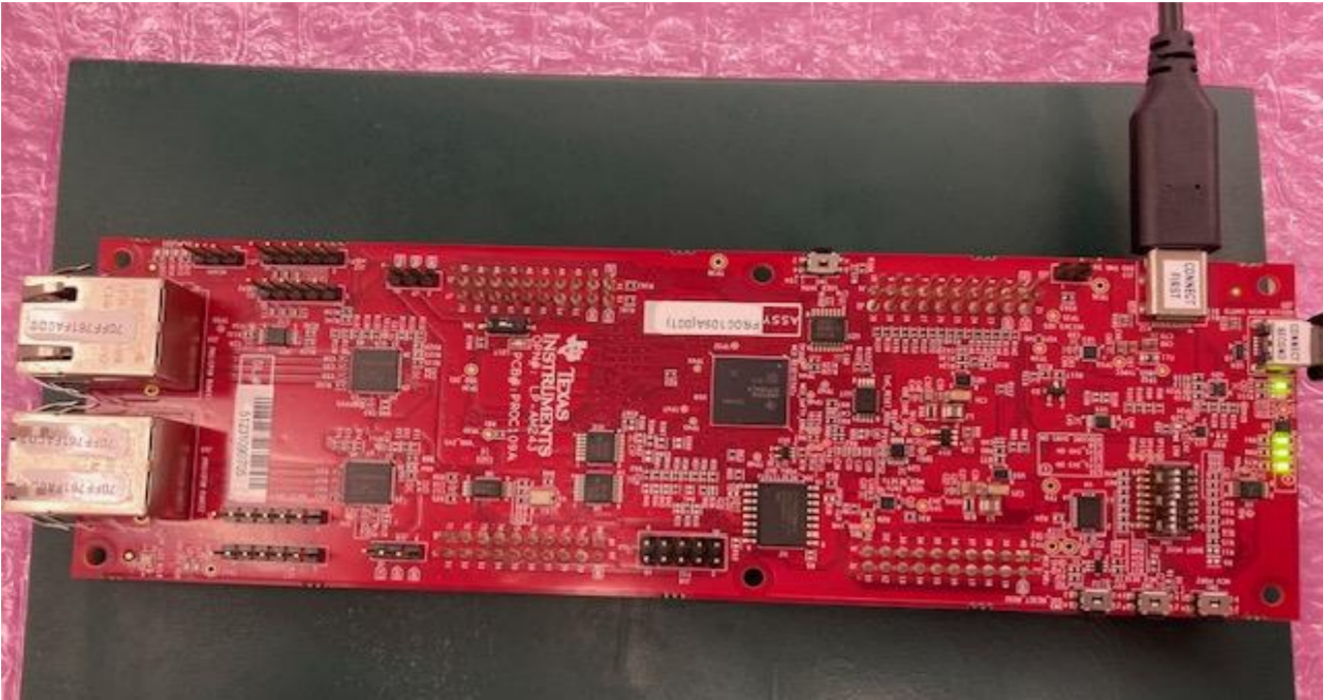


Restarted CCS

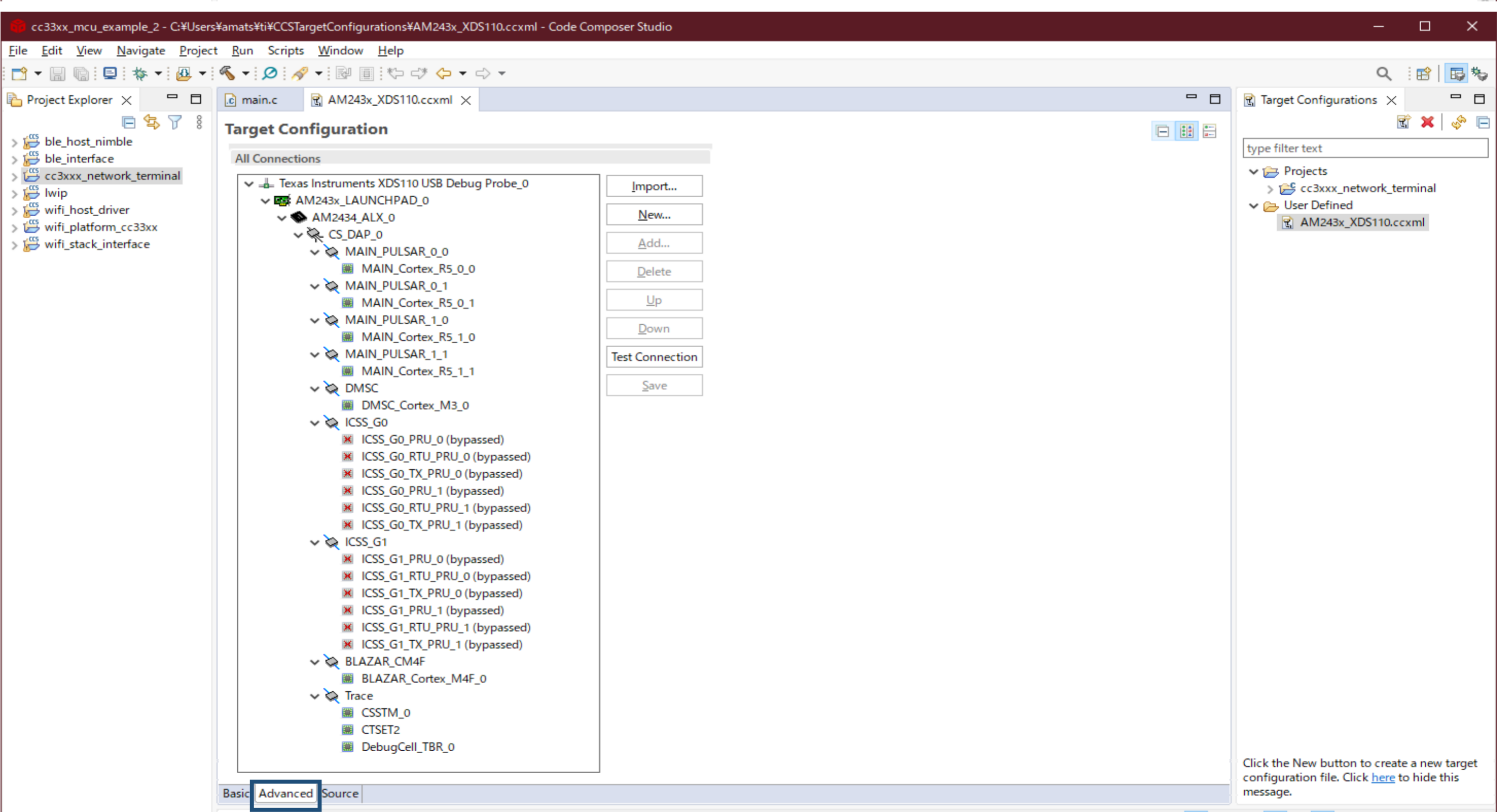
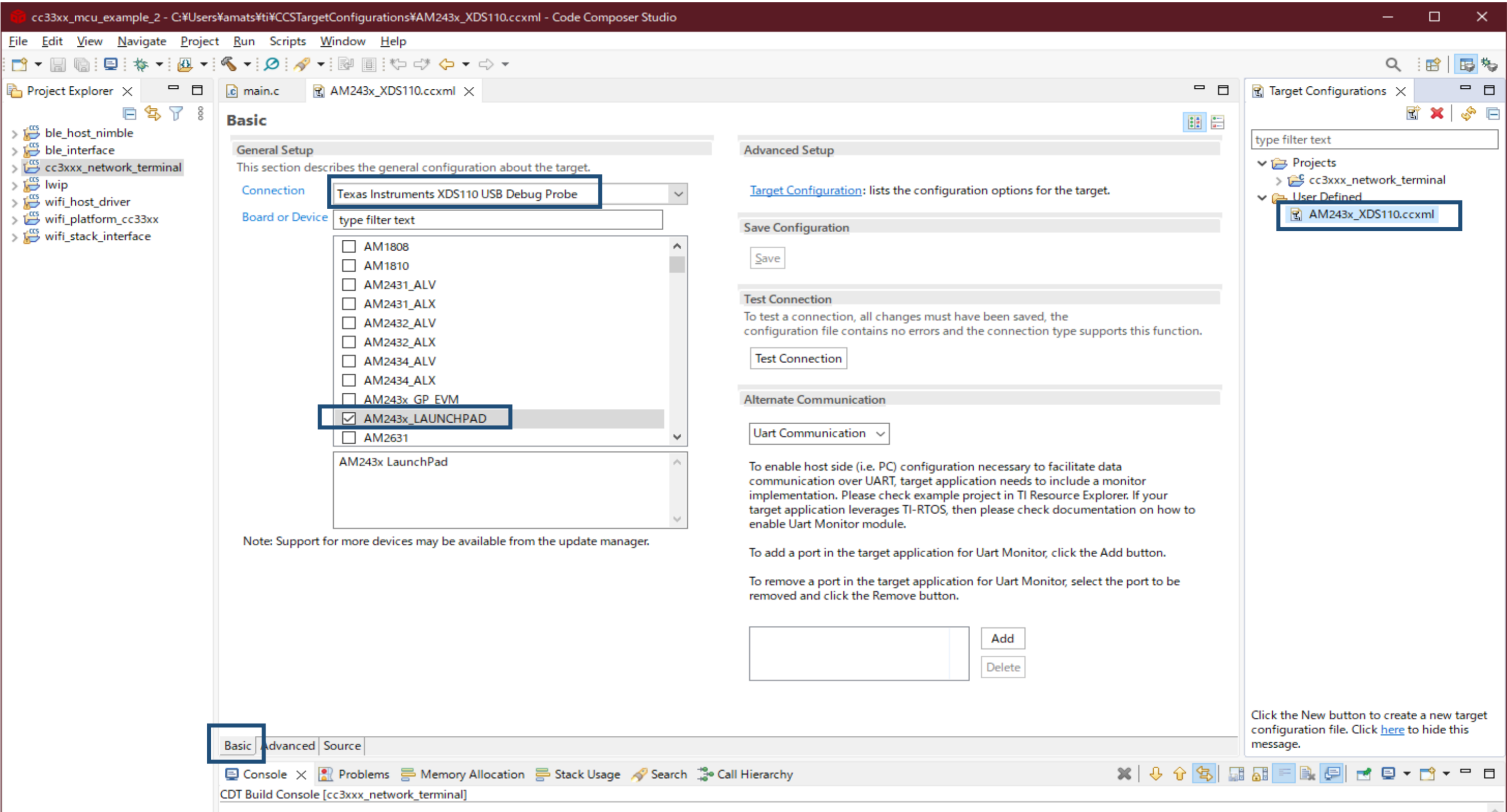
NOBOOT MODE



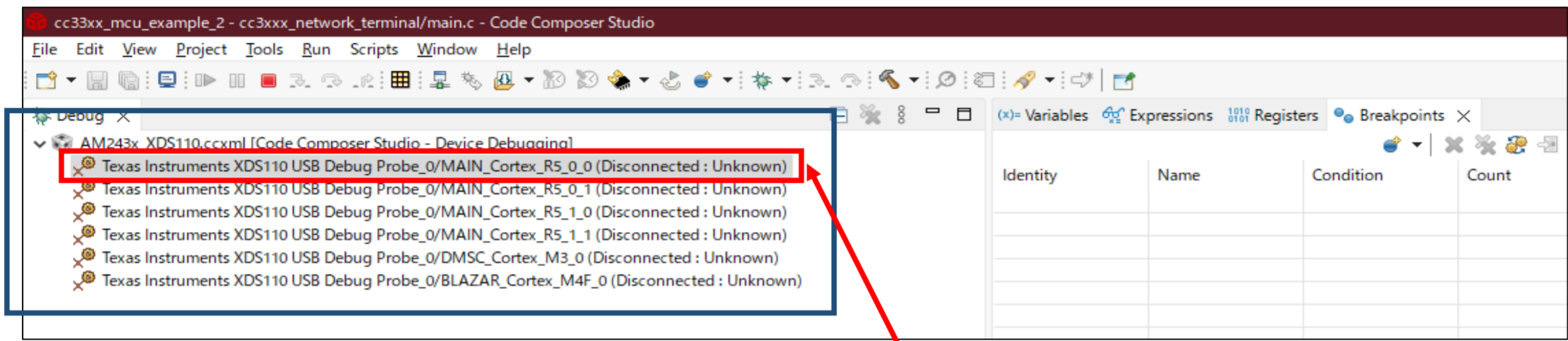
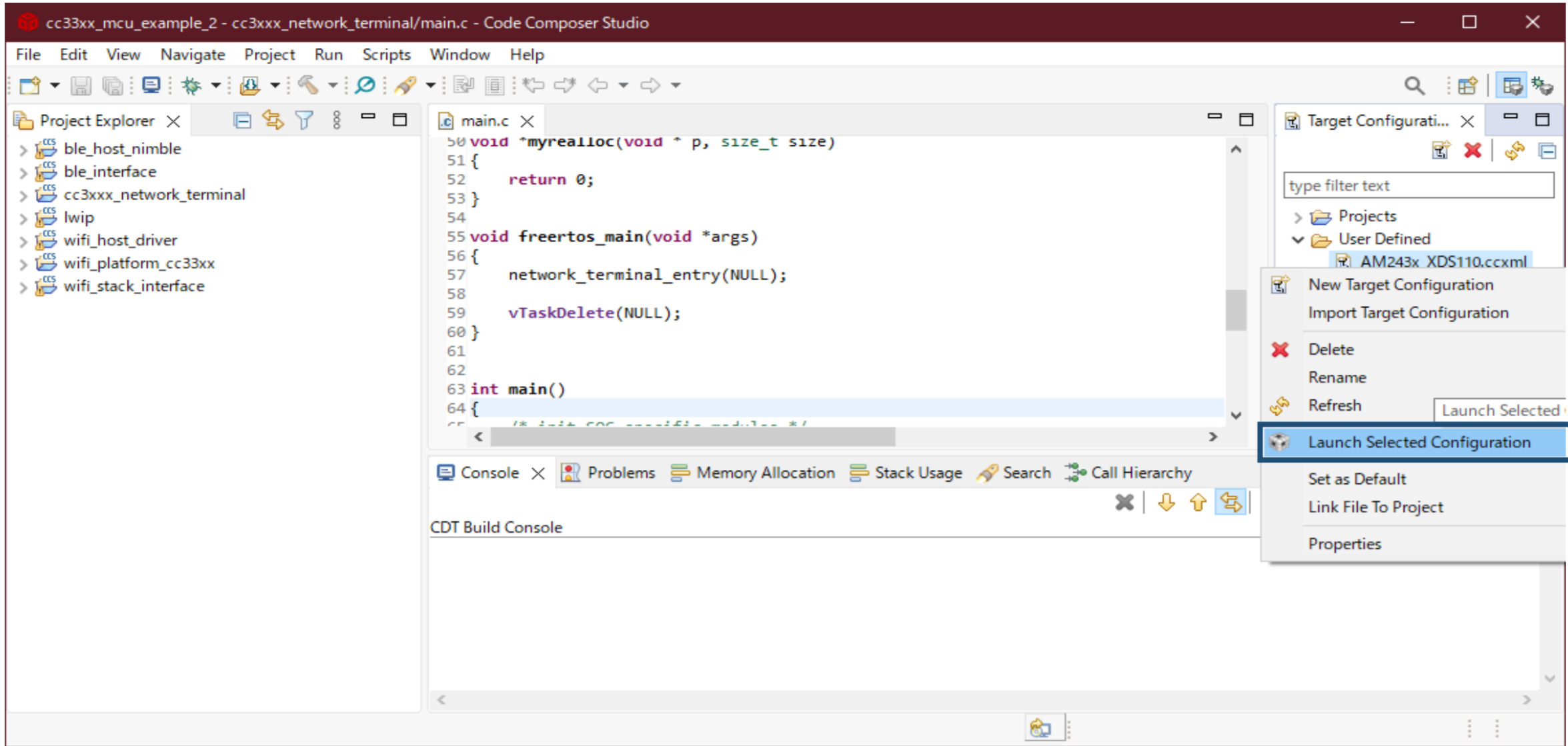
POWER-ON



AM243x_XDS110.ccxml



Launch the target configuration created with Create Target Configuration



(Disconnected:Unknown)
Is there any problem?

The reference site is (Disconnected:Running)

Reference sites

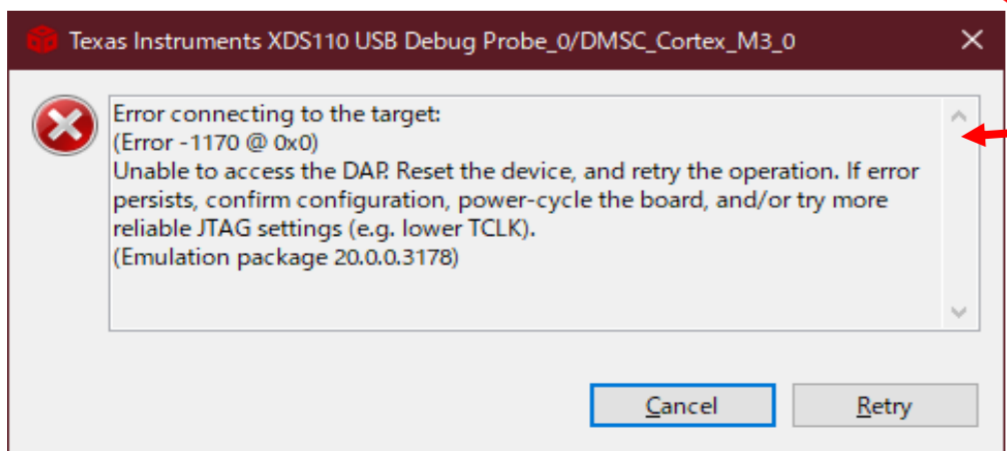
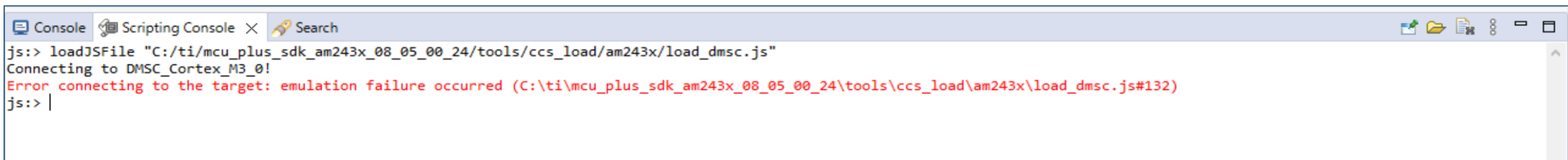
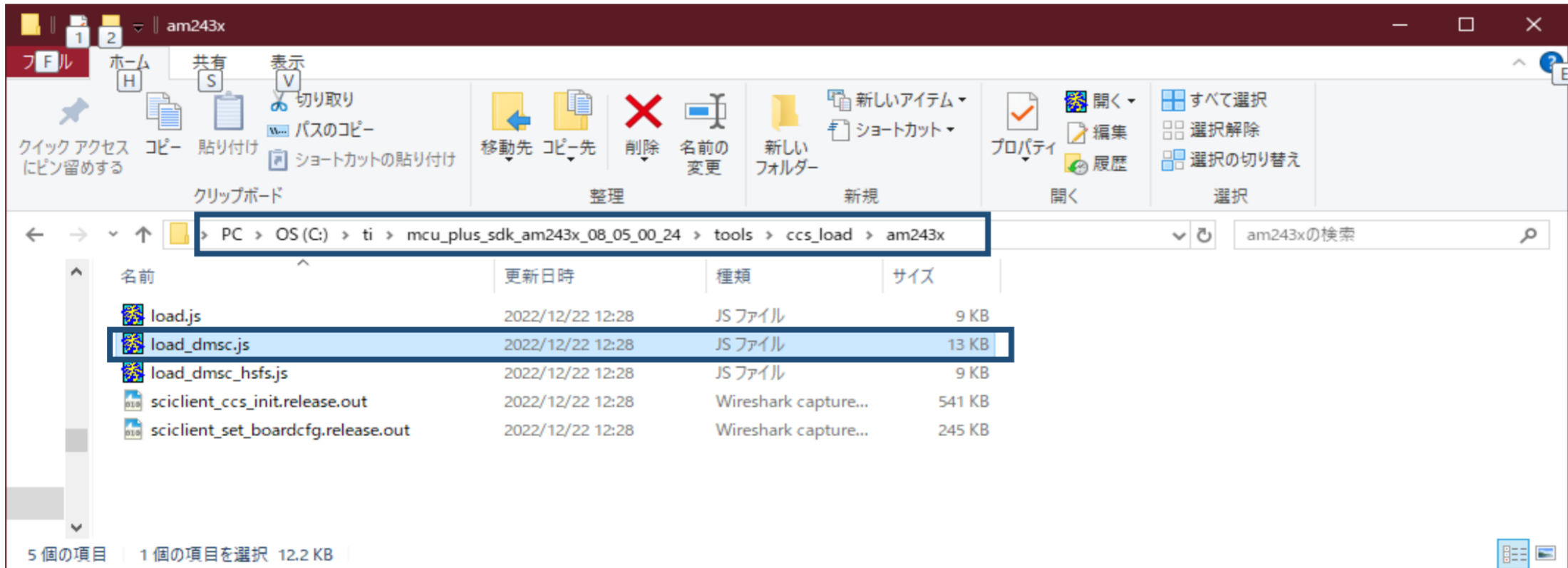
https://software-dl.ti.com/mcu-plus-sdk/esd/AM243X/08_05_00_24/exports/docs/api_guide_am243x/EVM_SETUP_PAGE.html#EVM_SOC_INIT

- You will see the AM243X target configuration in the "Debug" window as shown below



Target Configuration After Launch

load DMSC FW and initialize the SOC



An error occurred.
Please tell me the cause of the error and how to fix it.

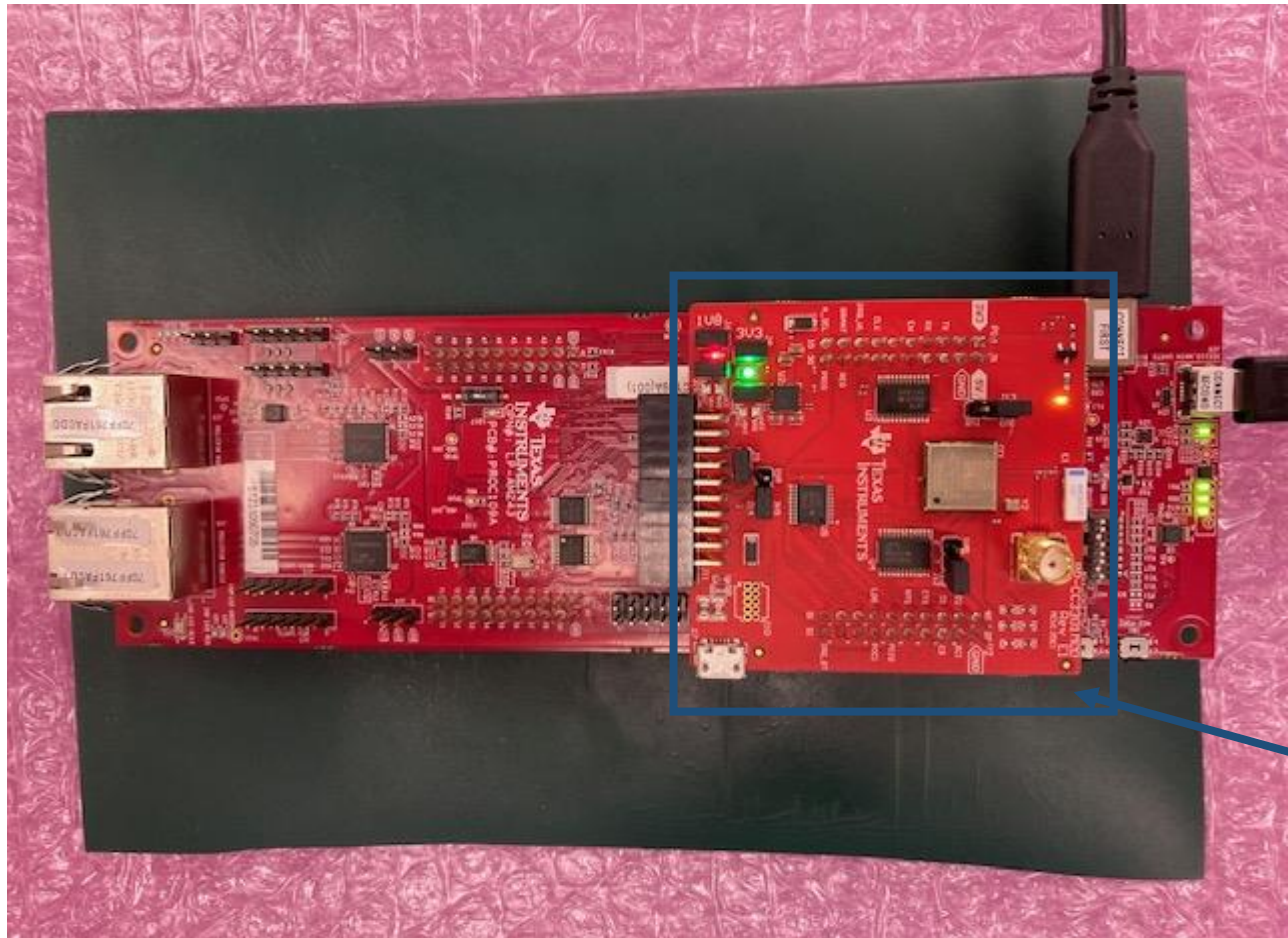
4. Sample run

There was an error in the [3. EVM Setup], but I tried running the sample project.

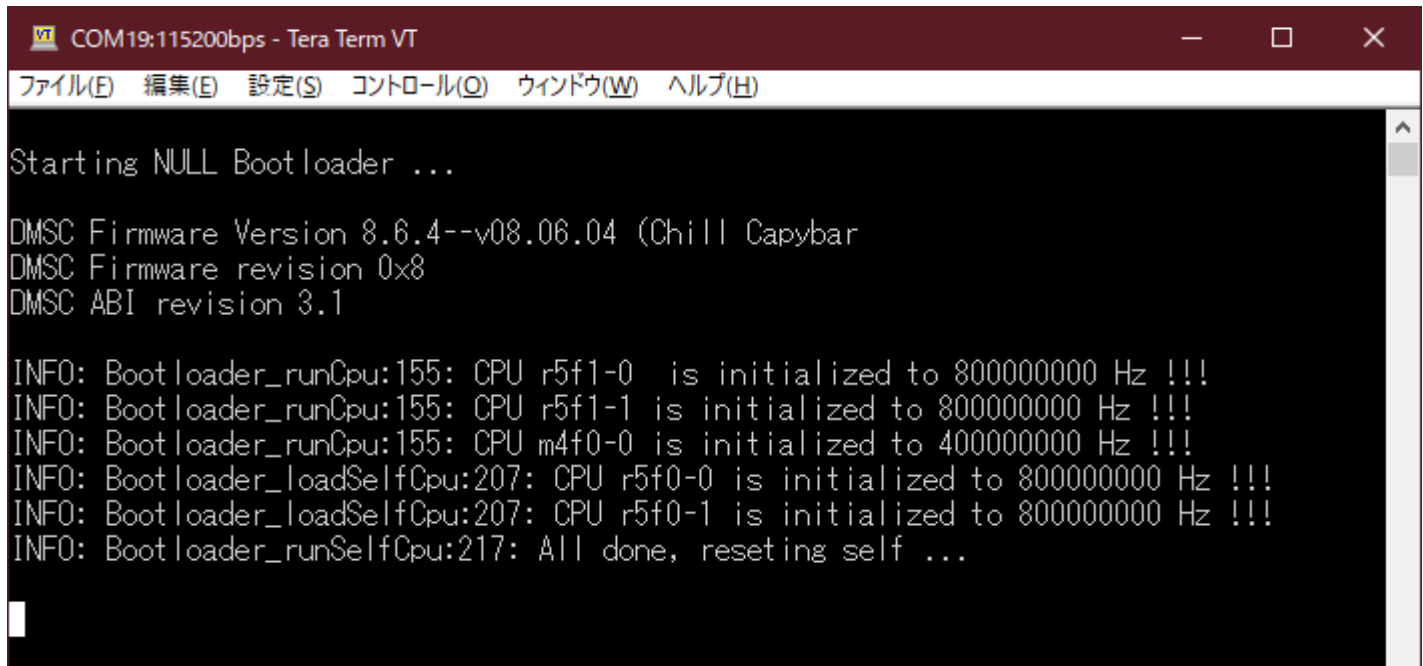
OSPI BOOT MODE



POWER ON



BP-CC3301MOD Rev E1



Debug

cc3xxx_mcu_example_2 - cc3xxx_network_terminal/main.c - Code Composer Studio

File Edit View Navigate Project Run Scripts Window Help

Project Explorer

- ble_host_nimble
- ble_interface
- cc3xxx_network_terminal [Active]
- lwip
- wifi_host_driver
- wifi_platform_cc3xxx
- wifi_stack_interface

main.c

```
47
48 void network_terminal_entry(void *args);
49
50 void *myrealloc(void *p, size_t size)
51 {
52     return 0;
53 }
54
55 void freertos_main(void *args)
56 {
57     network_terminal_entry(NULL);
58
59     vTaskDelete(NULL);
60 }
61
62
63 int main()
64 {
65     /* init SOC specific modules */
66     System_init();
67     Board_init();
68
69
70
71     /* This task is created at highest priority, it should create more tasks and then delete itself */
72     gMainTask = xTaskCreateStatic( freertos_main, /* Pointer to the function that implements the task. */
73                                   "freertos_main", /* Text name for the task. This is to facilitate debugging */
74                                   MAIN_TASK_SIZE, /* Stack depth in units of StackType_t typically uint32_t on
75                                   NULL, /* We are not using the task parameter. */
76                                   MAIN_TASK_PRI, /* task priority, 0 is lowest priority, configMAX_PRIORITIES-
77                                   gMainTaskStack, /* pointer to stack base */
78                                   &gMainTaskObj); /* pointer to statically allocated task object memory */
79
80     configASSERT(gMainTask != NULL);
81
82     /* Start the scheduler to start the tasks executing. */
83     vTaskStartScheduler();
84
85     /* The following line should never be reached because vTaskStartScheduler()
86     will only return if there was not enough FreeRTOS heap memory available to
87     create the Idle and (if configured) Timer tasks. Heap management, and
88     techniques for trapping heap exhaustion, are described in the book text. */
89     DebugP_assertNoLog(0);
90
91     return 0;
92 }
```

Target Configuration

type filter text

- Projects
 - cc3xxx_network_terminal
- User Defined
 - AM243x_XDS110.ccxml

Click the New button to create a new target configuration file. Click [here](#) to hide this message.

Console Problems Memory Allocation Stack Usage Search Call Hierarchy

AM243x_XDS110.ccxml

DMSC_Cortex_M3_0: Error connecting to the target: (Error -1170 @ 0x0) Unable to access the DAP. Reset the device, and retry the operation. If error p

cc3xxx_network_terminal

cc3xxx_mcu_example_2 - cc3xxx_network_terminal/main.c - Code Composer Studio

File Edit View Project Tools Run Scripts Window Help

Debug

cc3xxx_network_terminal [Code Composer Studio - Device Debugging]

- ✓ Texas Instruments XDS110 USB Debug Probe_0/MAIN_Cortex_R5_0_0 (Suspended - SW Breakpoint)
 - main() at main.c:64 0x700C72C4
 - bypass_auto_init + 0x4 () at boot_armv7r_asm.S:257 0x70137348
- ✗ Texas Instruments XDS110 USB Debug Probe_0/MAIN_Cortex_R5_0_1 (Disconnected : Unknown)
- ✗ Texas Instruments XDS110 USB Debug Probe_0/MAIN_Cortex_R5_1_0 (Disconnected : Unknown)
- ✗ Texas Instruments XDS110 USB Debug Probe_0/MAIN_Cortex_R5_1_1 (Disconnected : Unknown)
- ✗ Texas Instruments XDS110 USB Debug Probe_0/DMSC_Cortex_M3_0 (Disconnected : Unknown)
- ✗ Texas Instruments XDS110 USB Debug Probe_0/ICSS_G0_PRU_0 (Disconnected : Unknown)
- ✗ Texas Instruments XDS110 USB Debug Probe_0/ICSS_G0_RTU_PRU_0 (Disconnected : Unknown)

main.c

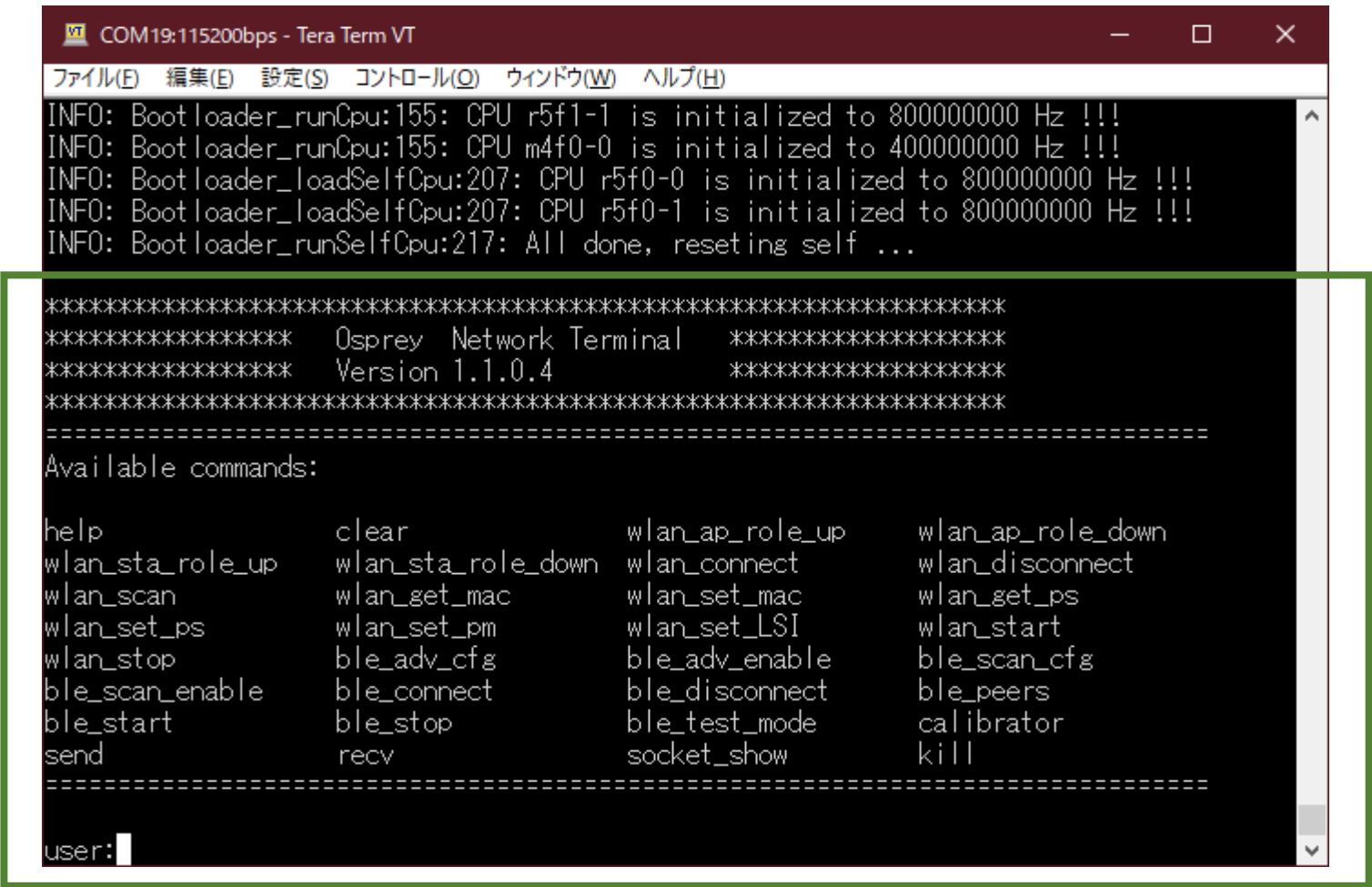
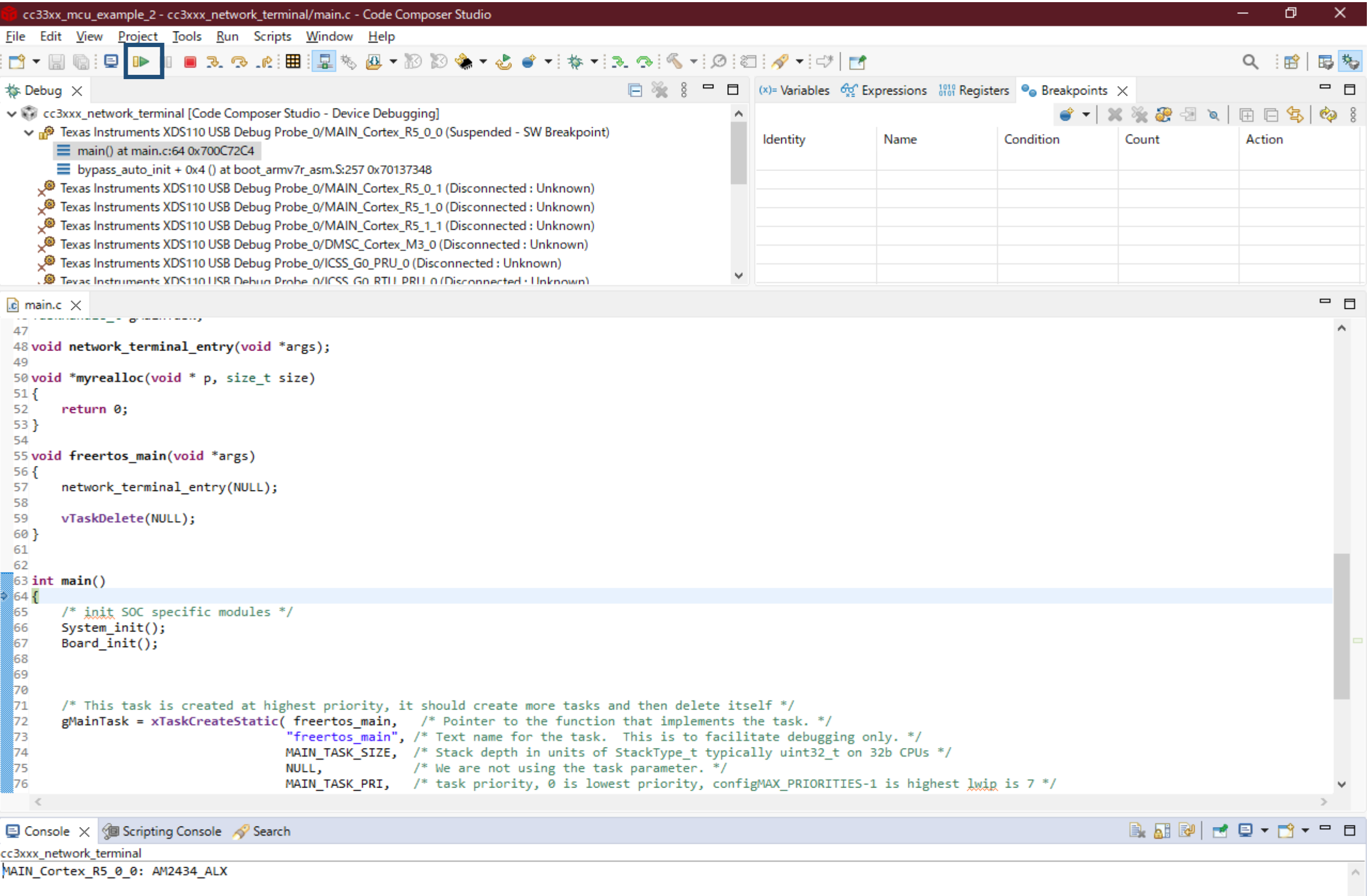
```
47
48 void network_terminal_entry(void *args);
49
50 void *myrealloc(void *p, size_t size)
51 {
52     return 0;
53 }
54
55 void freertos_main(void *args)
56 {
57     network_terminal_entry(NULL);
58
59     vTaskDelete(NULL);
60 }
61
62
63 int main()
64 {
65     /* init SOC specific modules */
66     System_init();
67     Board_init();
68
69
70
71     /* This task is created at highest priority, it should create more tasks and then delete itself */
72     gMainTask = xTaskCreateStatic( freertos_main, /* Pointer to the function that implements the task. */
73                                   "freertos_main", /* Text name for the task. This is to facilitate debugging only. */
74                                   MAIN_TASK_SIZE, /* Stack depth in units of StackType_t typically uint32_t on 32b CPUs */
75                                   NULL, /* We are not using the task parameter. */
76                                   MAIN_TASK_PRI, /* task priority, 0 is lowest priority, configMAX_PRIORITIES-1 is highest lwip is 7 */
77                                   gMainTaskStack, /* pointer to stack base */
78                                   &gMainTaskObj); /* pointer to statically allocated task object memory */
79
80     configASSERT(gMainTask != NULL);
81
82     /* Start the scheduler to start the tasks executing. */
83     vTaskStartScheduler();
84
85     /* The following line should never be reached because vTaskStartScheduler()
86     will only return if there was not enough FreeRTOS heap memory available to
87     create the Idle and (if configured) Timer tasks. Heap management, and
88     techniques for trapping heap exhaustion, are described in the book text. */
89     DebugP_assertNoLog(0);
90
91     return 0;
92 }
```

Console Scripting Console Search

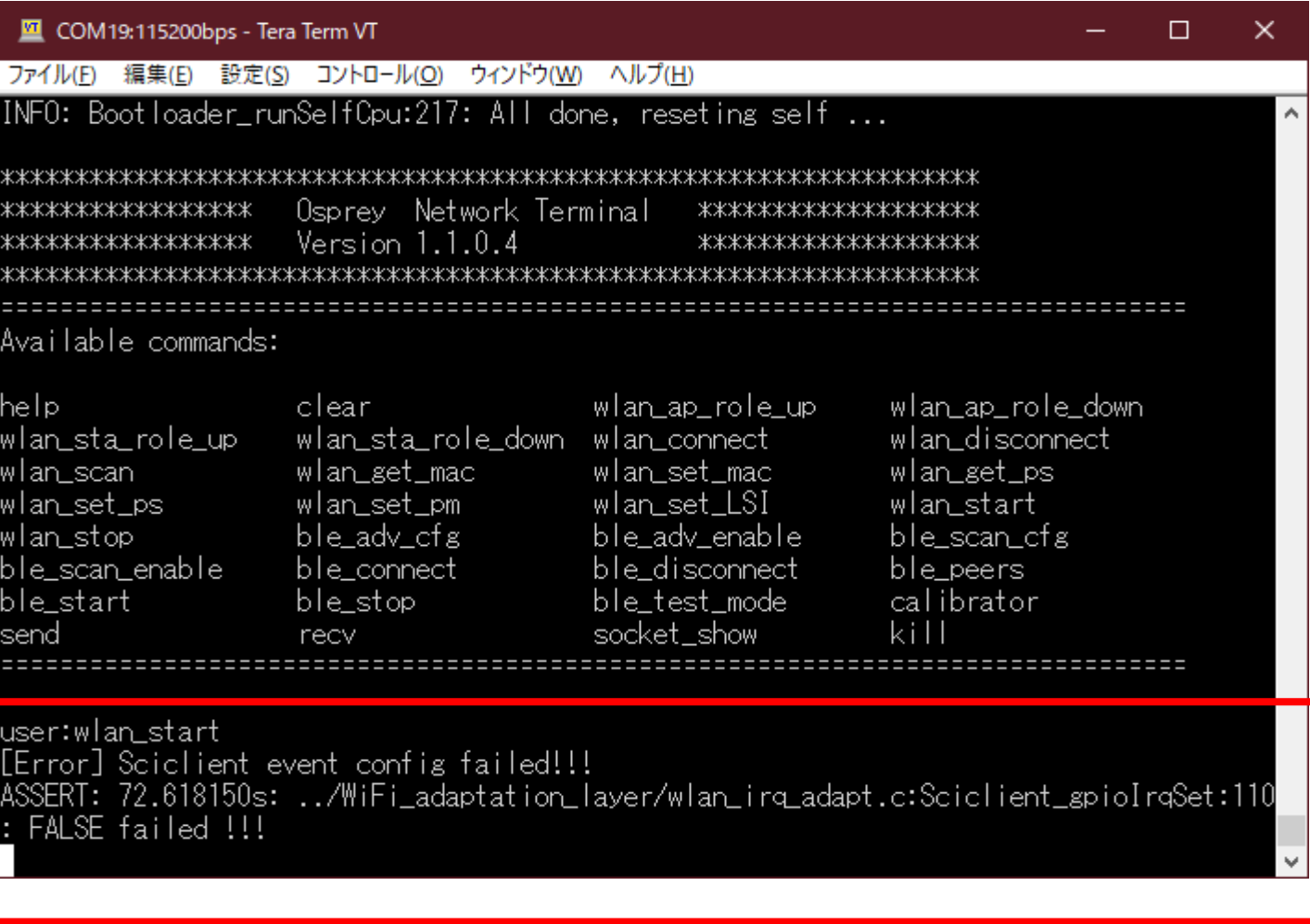
cc3xxx_network_terminal

MAIN_Cortex_R5_0_0: AM2434_ALX

Resume



wlan_start



An error occurred.

Debug Suspend

The screenshot displays the Code Composer Studio interface during a debug session. The top toolbar includes standard development tools like File, Edit, View, Project, Tools, Run, Scripts, Window, and Help. The main workspace is divided into three panes:

- Call Stack (Left):** Shows the sequence of function calls. The top entry is `_DebugP_assert()` at `DebugP_log.c:102 0x700CC19E`. Below it are various initialization and network-related functions, and the bottom entry is `Texas Instruments XDS110 USB Debug Probe_0/MAIN_Cortex_R5_0_1 (Disconnected : Unknown)`.
- Source Code (Middle):** Displays the source code of `_DebugP_log.c`. The code includes a `while` loop for handling assertions, with a comment `/* loop forever */`. The current line of execution is highlighted in blue.
- Console (Bottom):** Shows the output of the debug session. It includes the message `[MAIN_Cortex_R5_0_0] [Error] Sciclient event config failed!!!` and the assertion failure message `ASSERT: 72.618150s: ../WiFi_adaptation_layer/wlan_irq_adapt.c:Sciclient_gpioIrqSet:110: FALSE failed !!!`.