

I am using LP-AM243 .

I followed the instructions on the reference site
to flash the SOC initialization binary to the LP, but an error occurred.

An error occurs when connecting to CCS.

Please tell me the cause of the error and how to fix it.

1. environment

software

CCS 12.8.1.00005

mcu_plus_sdk_am243x_08_05_00_24

Python 3.13.4

Evaluation Kit

LP-AM243

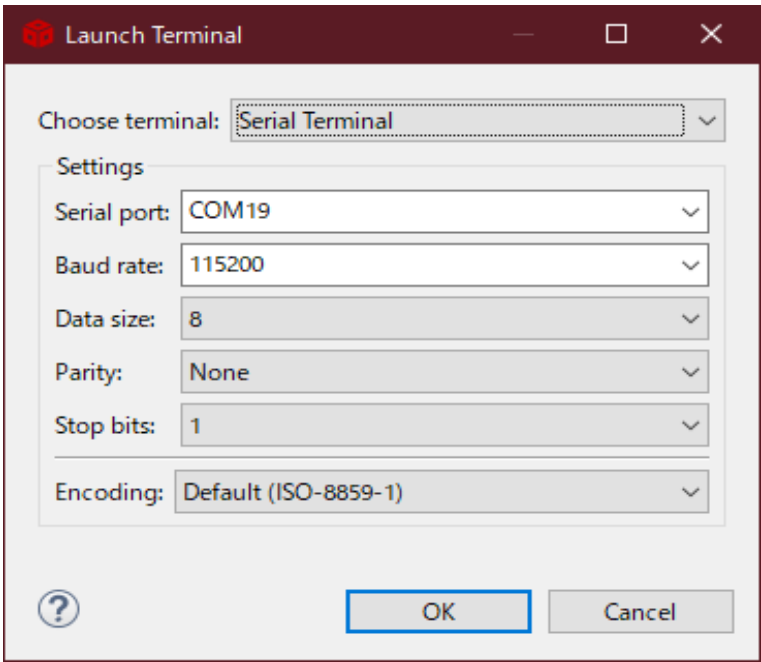
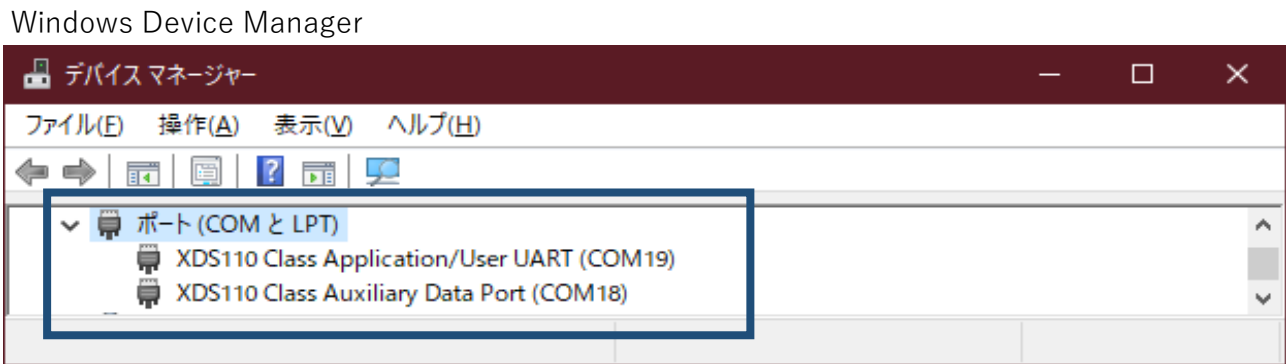
2. EVM Setup

Reference sites
https://software-dl.ti.com/mcu-plus-sdk/esd/AM243X/08_05_00_24/exports/docs/api_guide_am243x/EVM_SETUP_PAGE.html

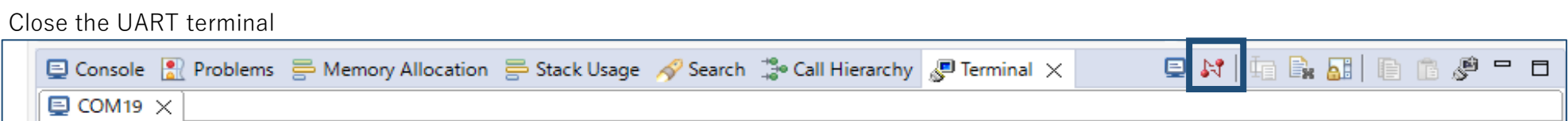
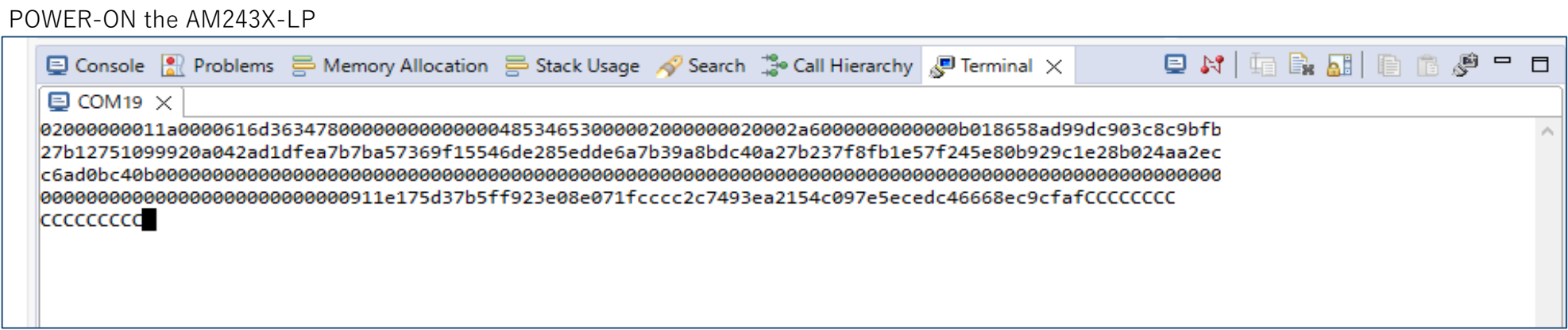
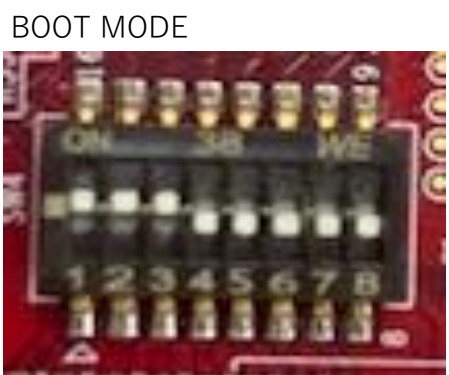
Cable Connections
Power Indication LEDs



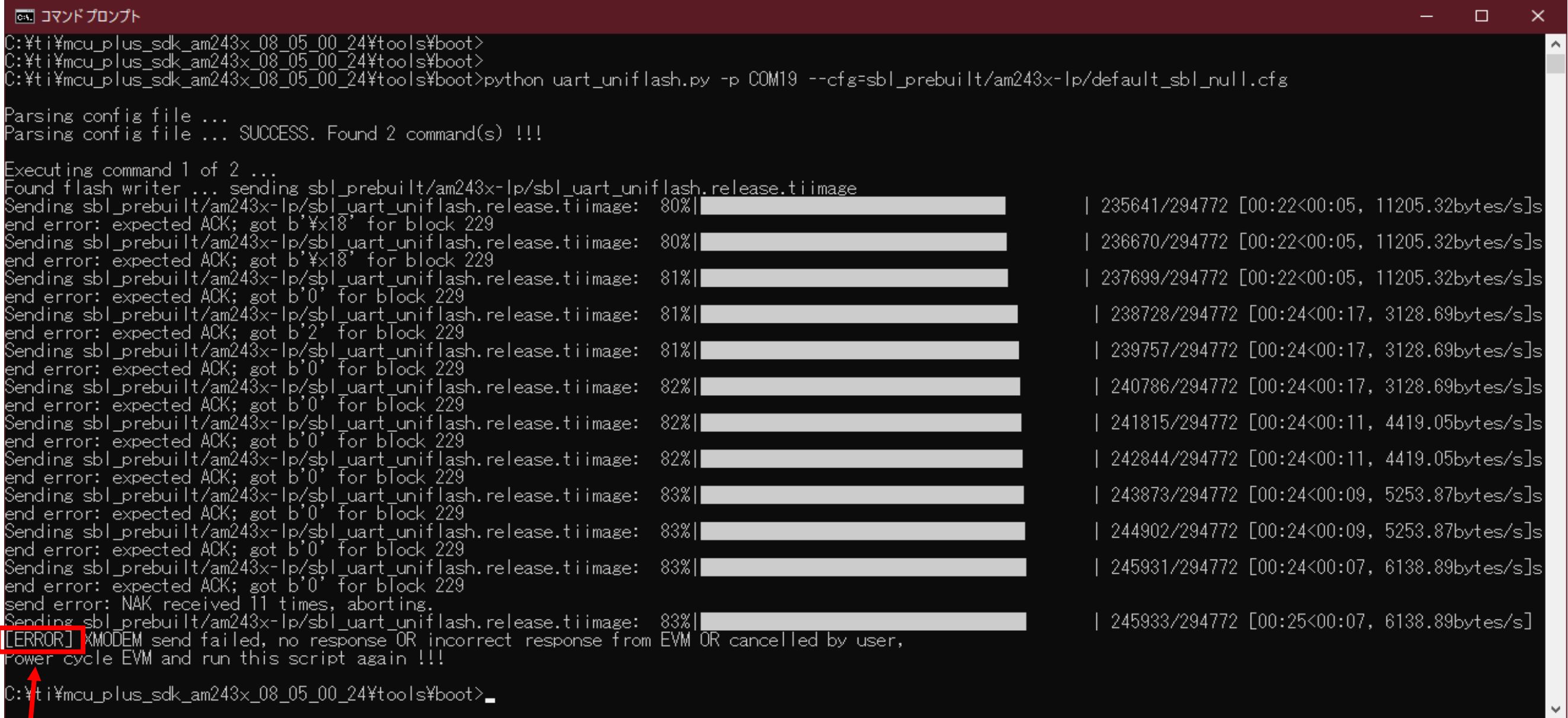
Setup UART Terminal



Flash SOC Initialization Binary



flash the SOC initialization binary to the LP



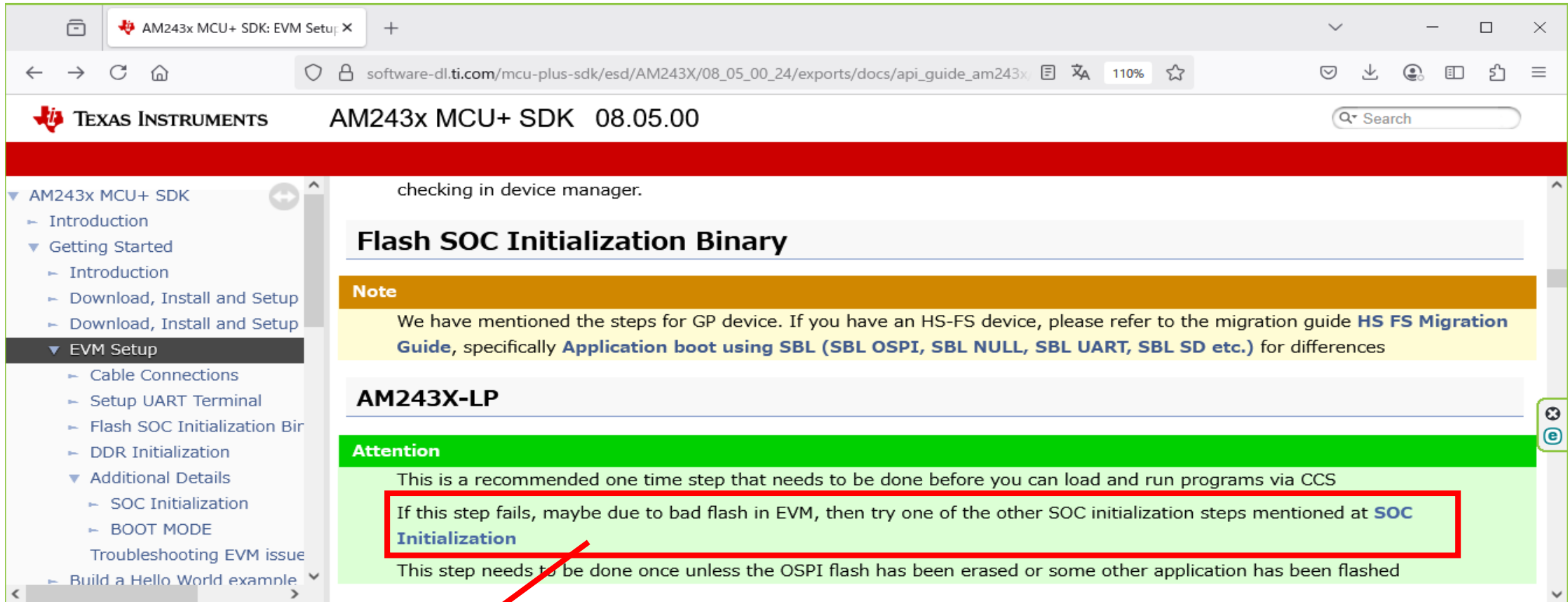
ERROR

This error has been asked in another thread so there is no need to answer it here.

As per the instructions, I tried to initialize the SOC in a different way.

A CCS connection error occurred, as shown below.

This thread will discuss CCS connection errors.

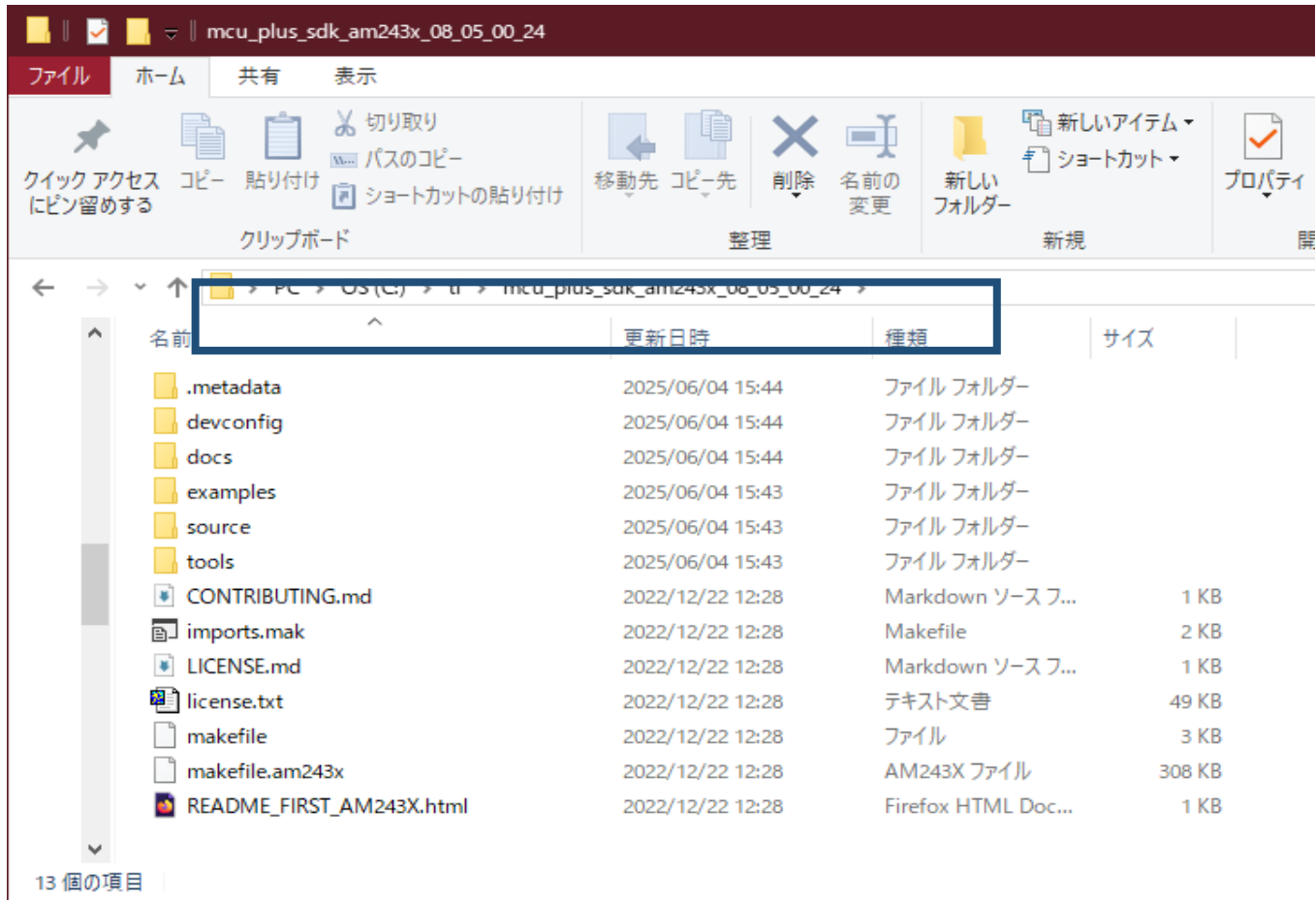
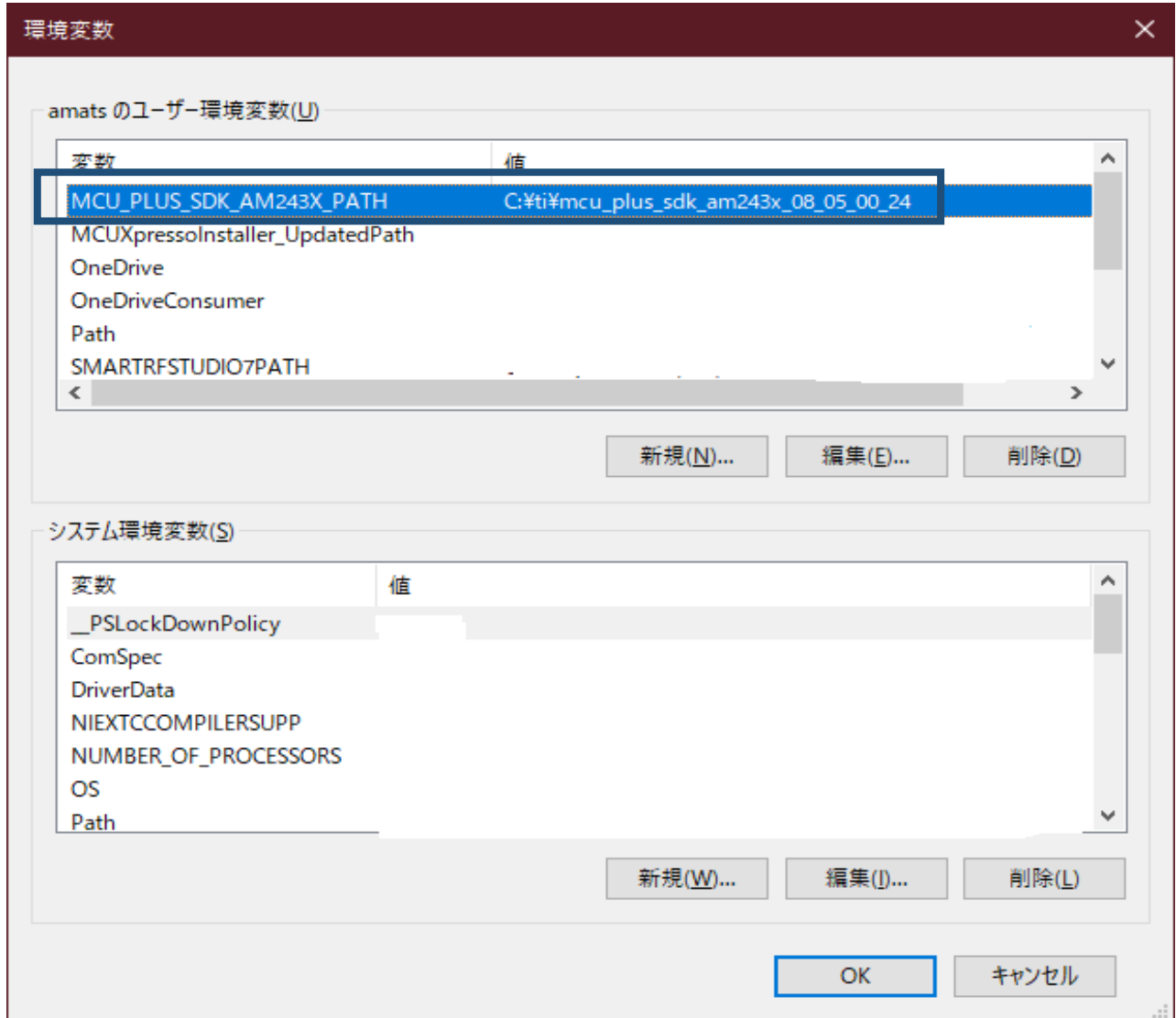


SOC Initialization Using CCS Scripting

Environment Variable

MCU_PLUS_SDK_AM243X_PATH

C:\ti\mcu_plus_sdk_am243x_08_05_00_24

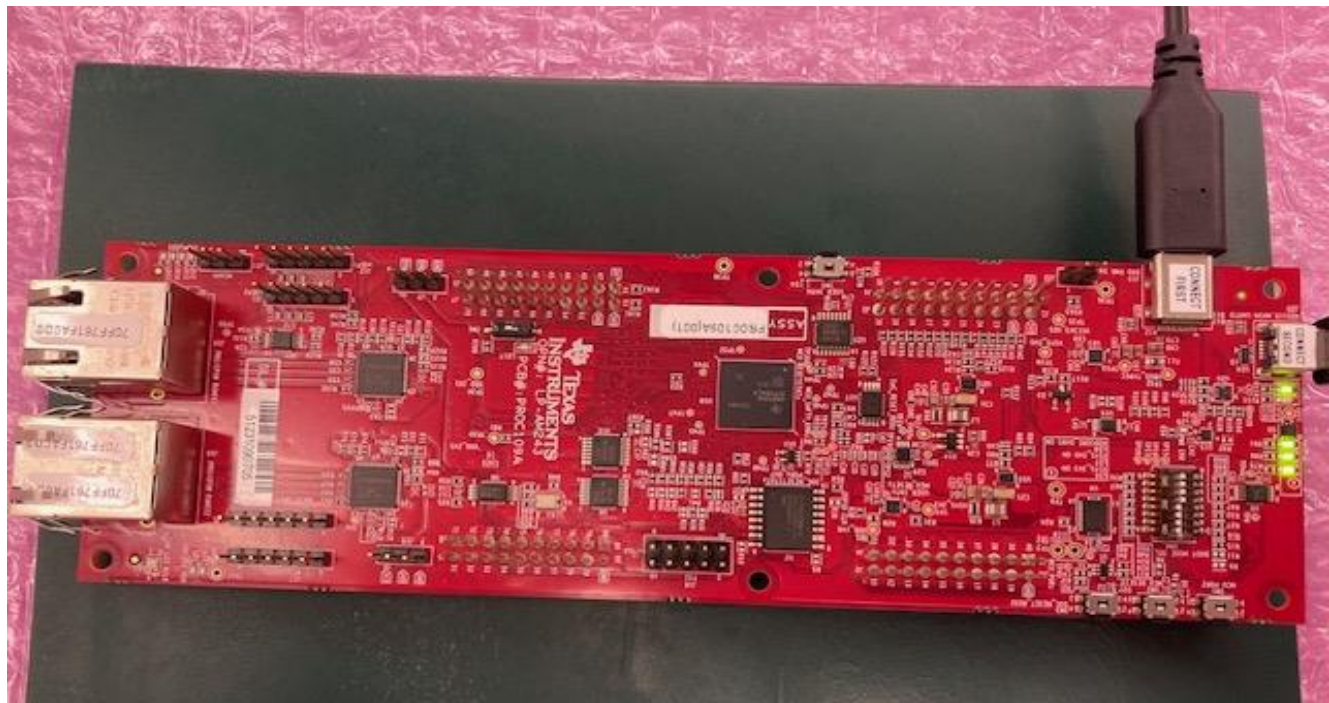


Restarted CCS

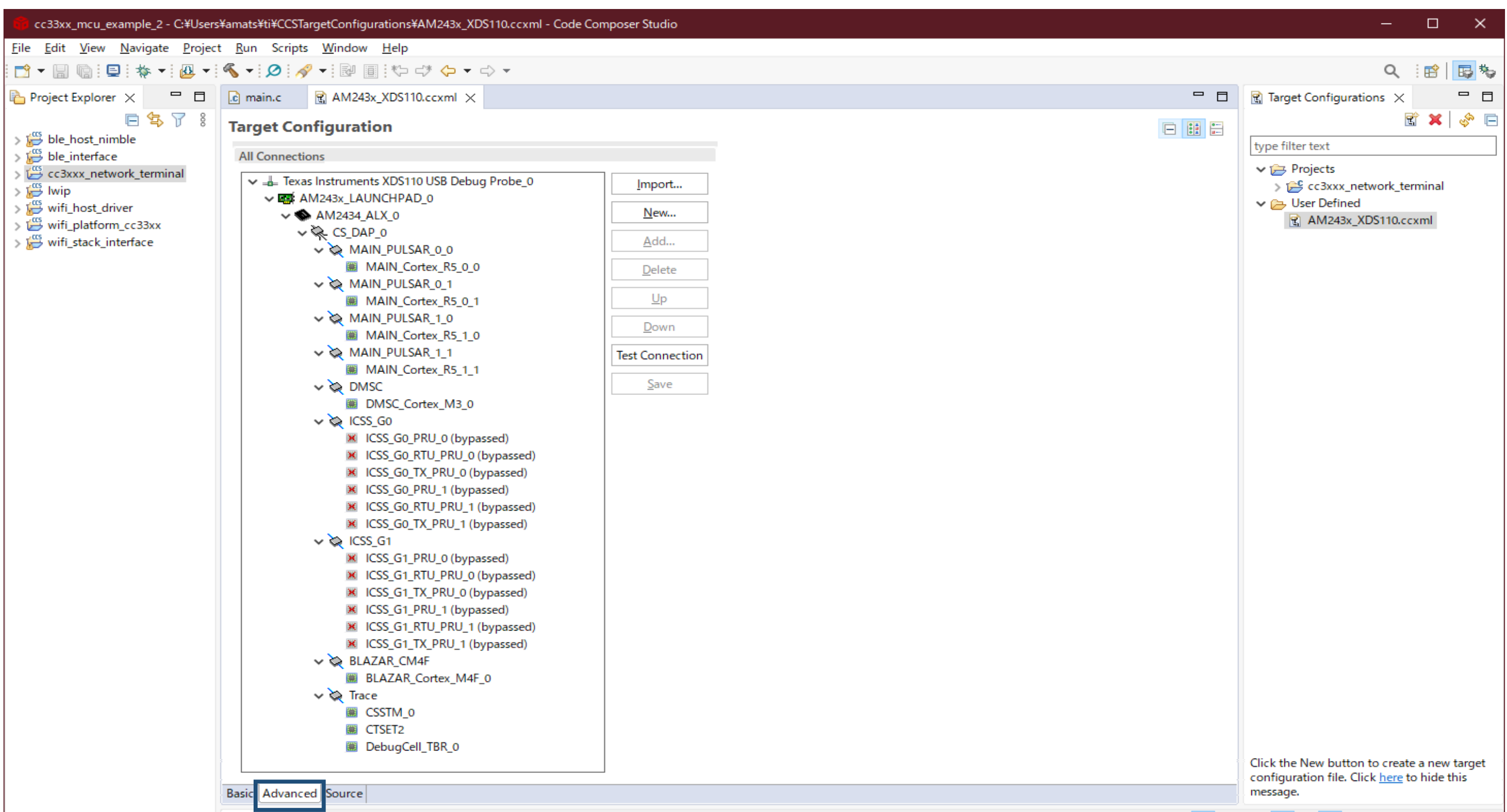
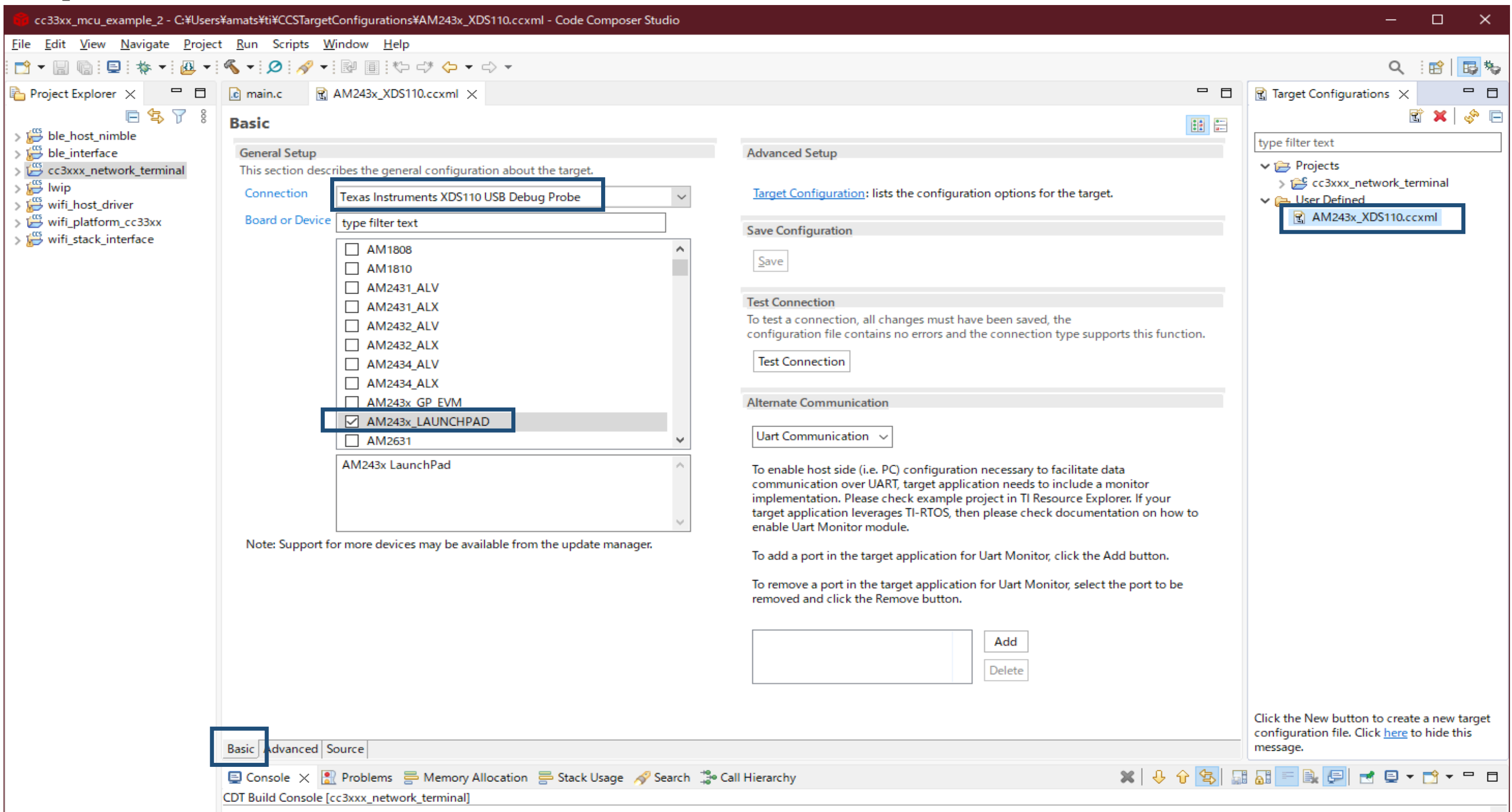
NOBOOT MODE



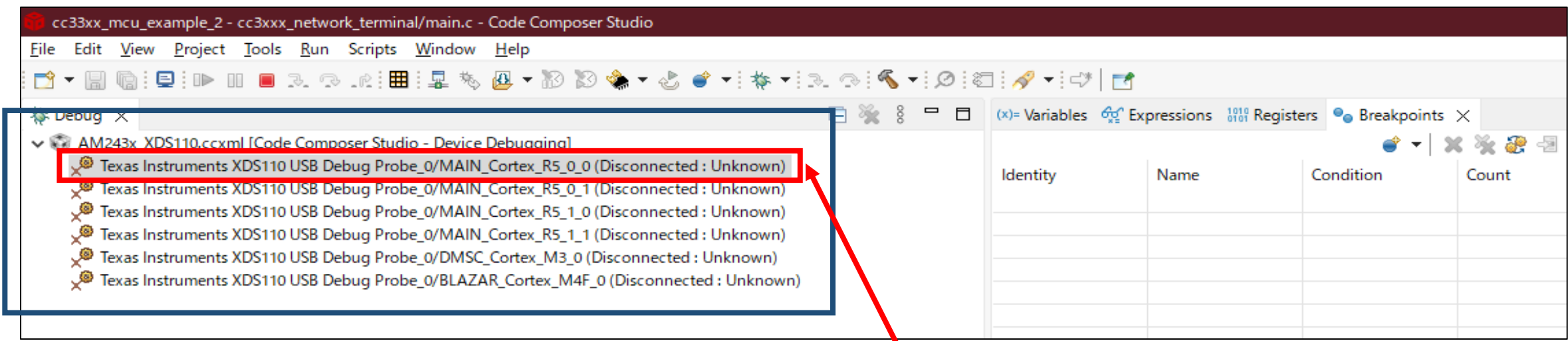
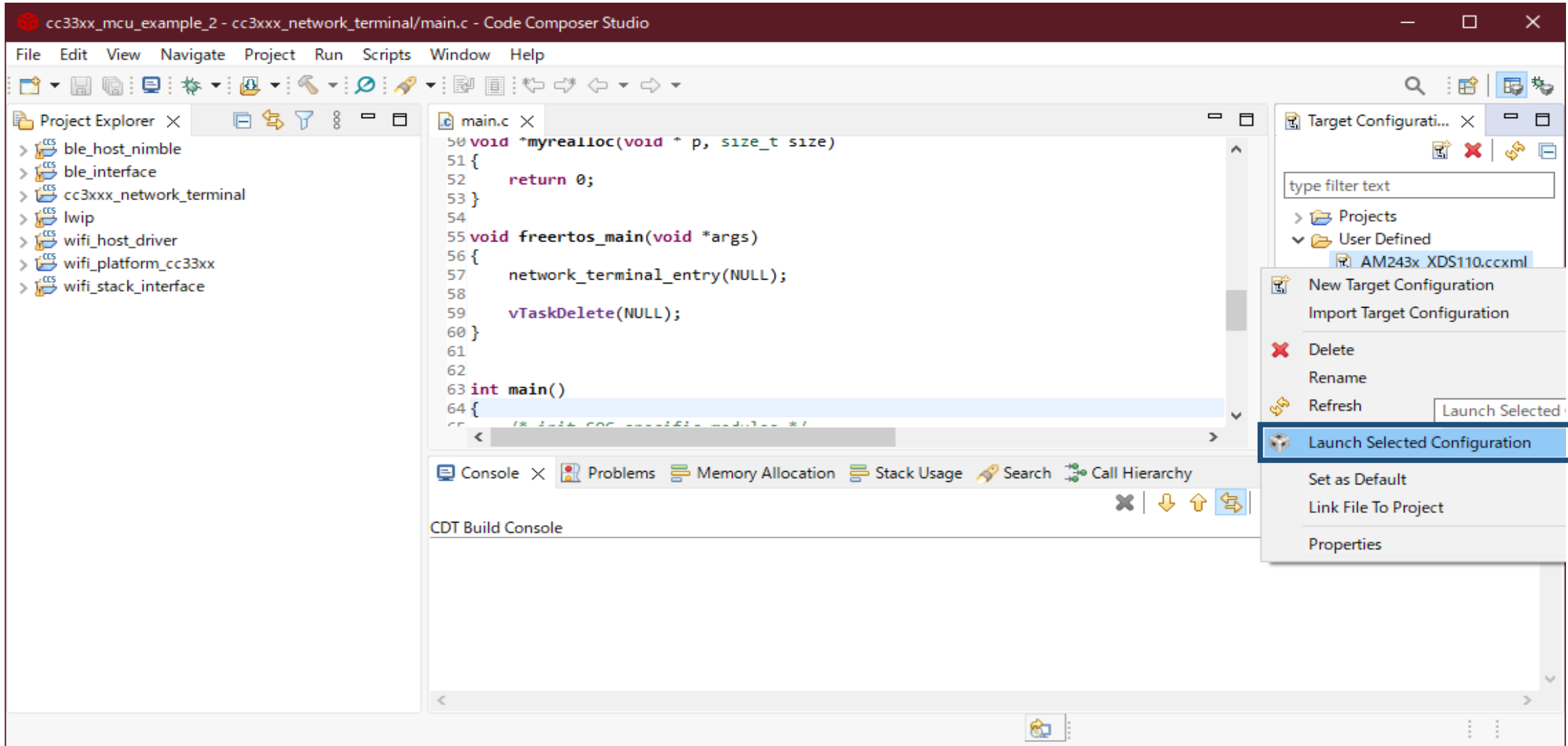
POWER-ON



AM243x_XDS110.ccxml



Launch the target configuration created with Create Target Configuration



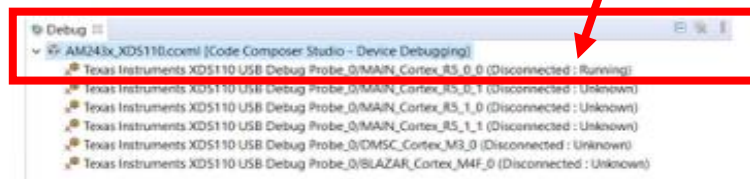
(Disconnected:Unknown)
Is there any problem?

The reference site is (Disconnected:Running)

Reference sites

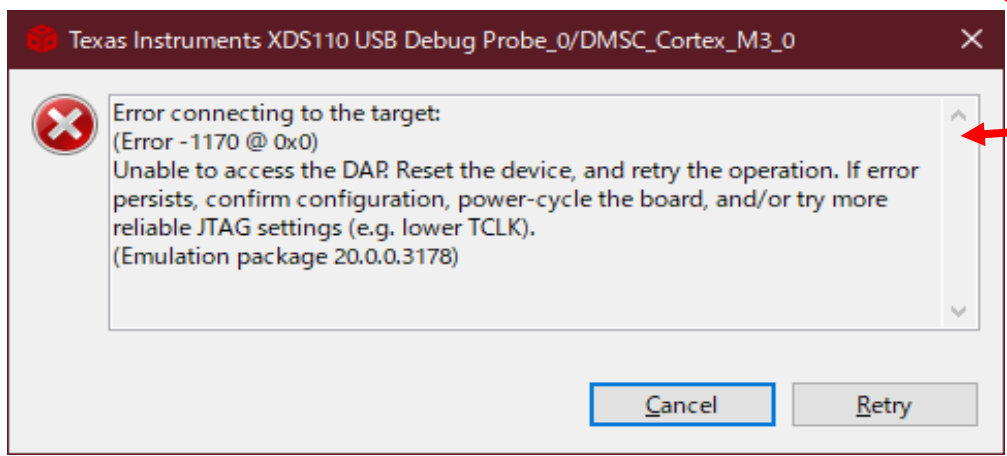
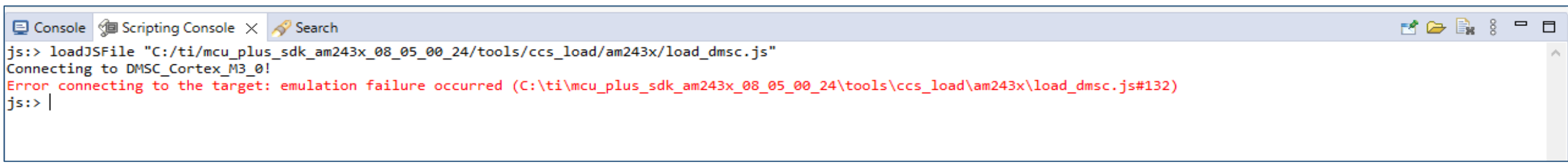
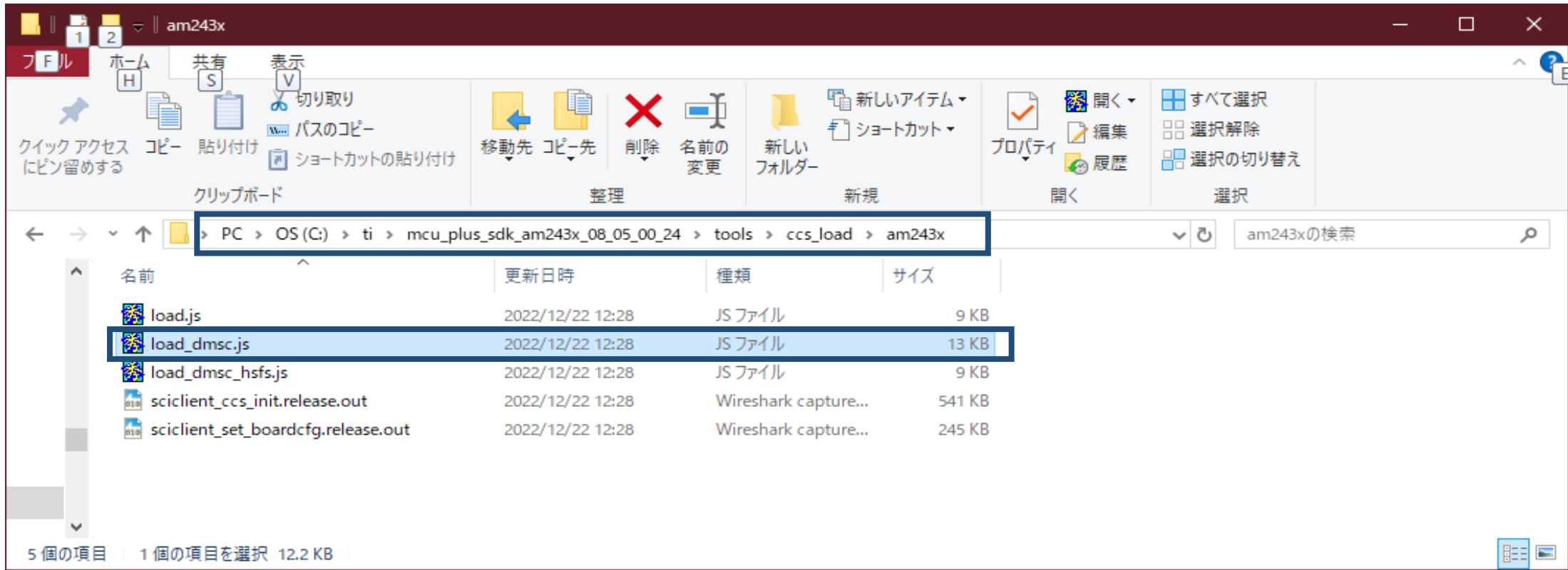
https://software-dl.ti.com/mcu-plus-sdk/esd/AM243X/08_05_00_24/exports/docs/api_guide_am243x/EVM_SETUP_PAGE.html#EVM_SOC_INIT

- You will see the AM243X target configuration in the "Debug" window as shown below



Target Configuration After Launch

load DMSC FW and initialize the SOC



An error occurred.
Please tell me the cause of the error and how to fix it.