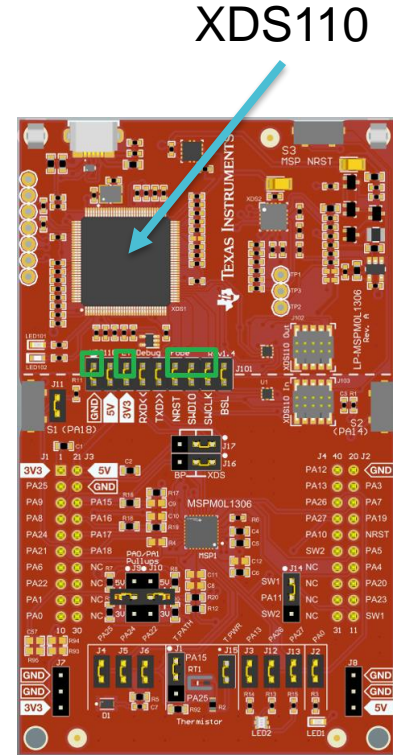


Unlock MSPM0

MSPM0 team

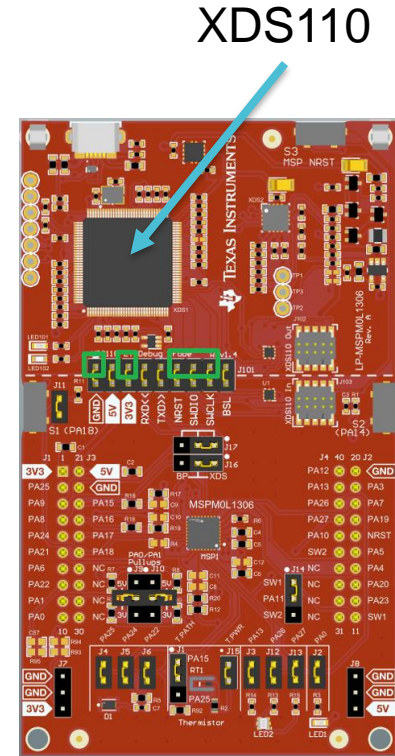
Method 0: Make device enter BSL

- Hardware connection (based on XDS110)
- Step 0: Use a DuPont cable to connect the GND, DIO, and CLK on one side of the burner to the target board.
- Step 1: Power down the MCU (unplug the power cord of the burner).
- Step 2: Pull PA18 up. Press the PA18 button on Launchpad to ensure that the jumper cap is secure.
- Step 3: Power on the MCU (plug in the power cord of the burner).
- Step 5: Burn within 10 seconds without releasing PA18. No, look at method1.



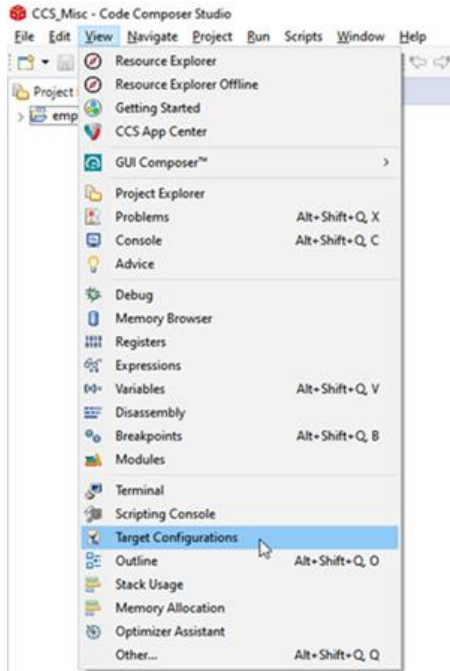
Method 1: Force a DSSM Mass Erase

- Hardware connection (based on XDS110)
- Step 1: Remove the jumper cap.
- Step 2: Use a DuPont cable to connect the GND, 3.3V, DIO, CLK, and RST on one side of the burner to the target board. (If using launchpad, there is no need to do Step1,2).

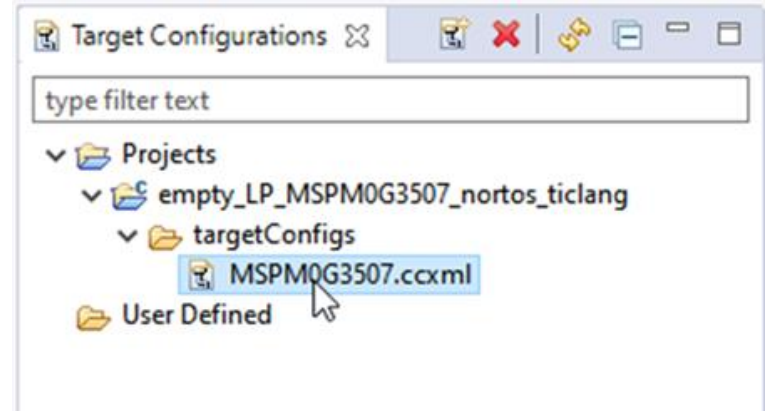


Method 1: Force a DSSM Mass Erase

- Software steps (based on CCS)
 - Step1: Open Target Configurations



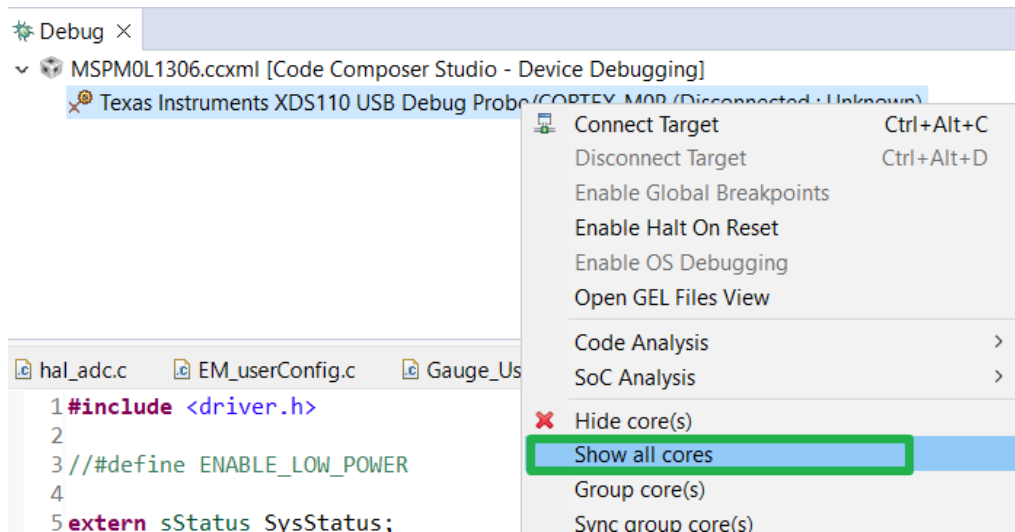
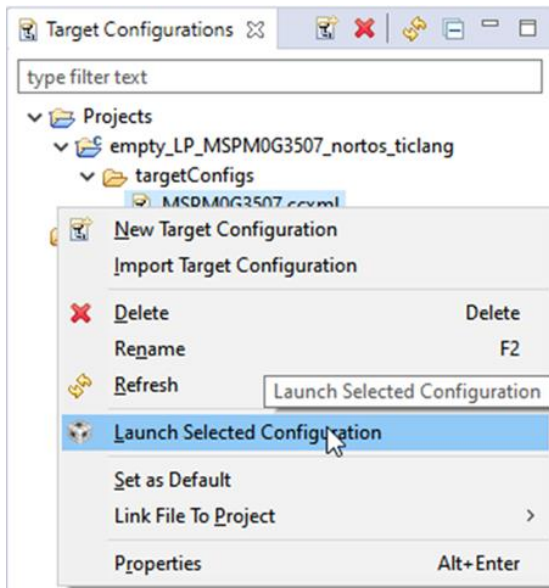
- Step2: Find the ccxml file for the corresponding project



Method 1: Force a DSSM Mass Erase

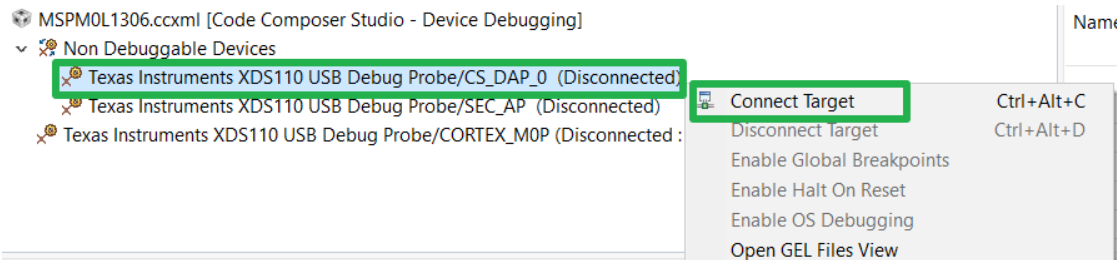
- Software steps (based on CCS)
 - Step3: Click on launch

- Step4: Show all cores

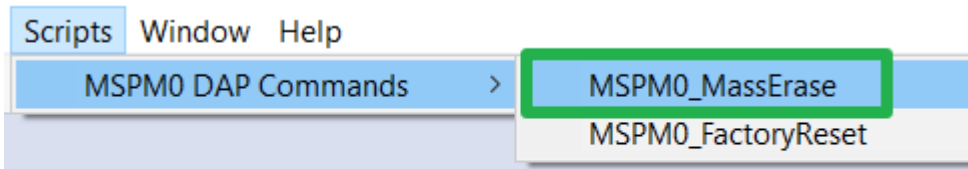


Method 1: Force a DSSM Mass Erase

- Software steps (based on CCS)
 - Step5: Connect DAP (If not work, please choose method2)



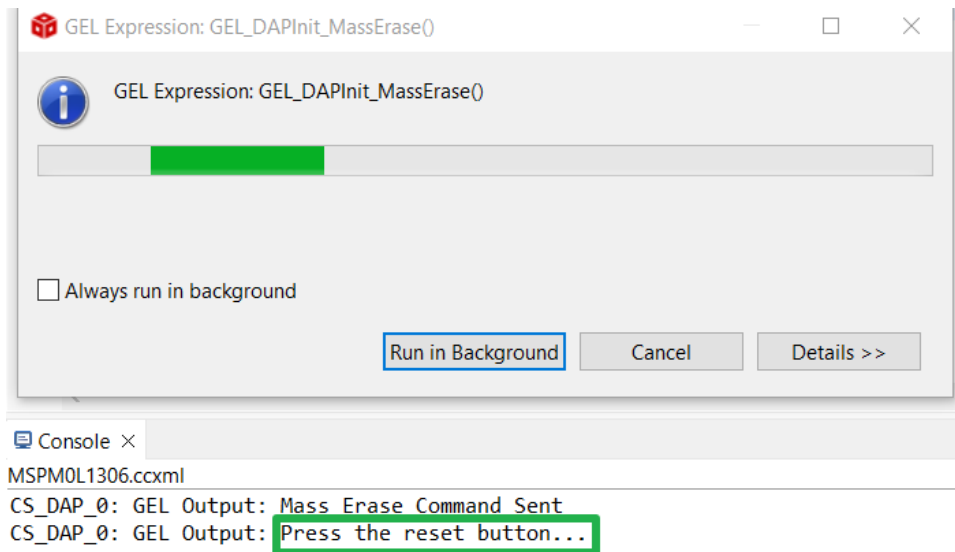
- Step6: Mass erase



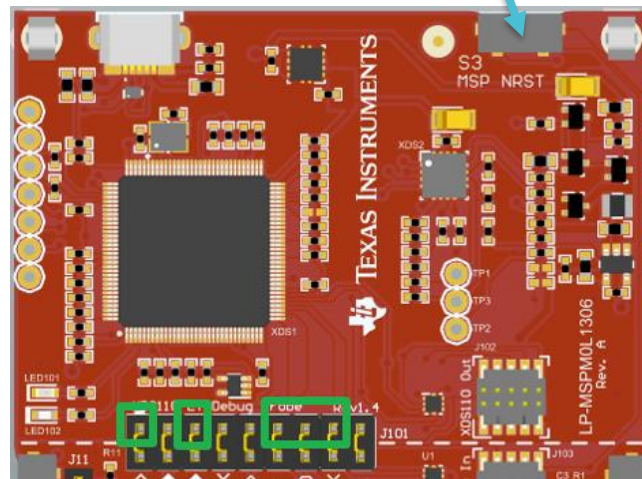
Code Composer Studio - Device Debugging]

Method 1: Force a DSSM Mass Erase

- Software steps (based on CCS)
 - Step7: if see this on Console interface, press the reset button of XDS110.



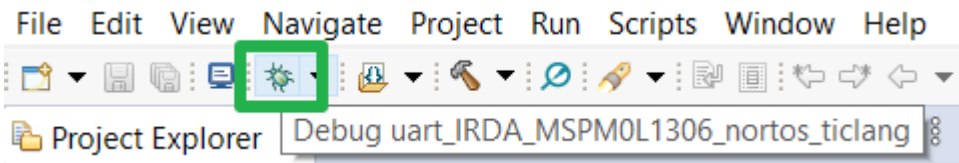
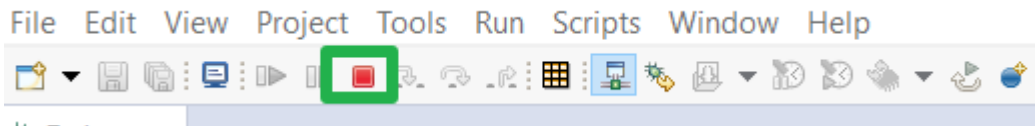
Reset button



Method 1: Force a DSSM Mass Erase

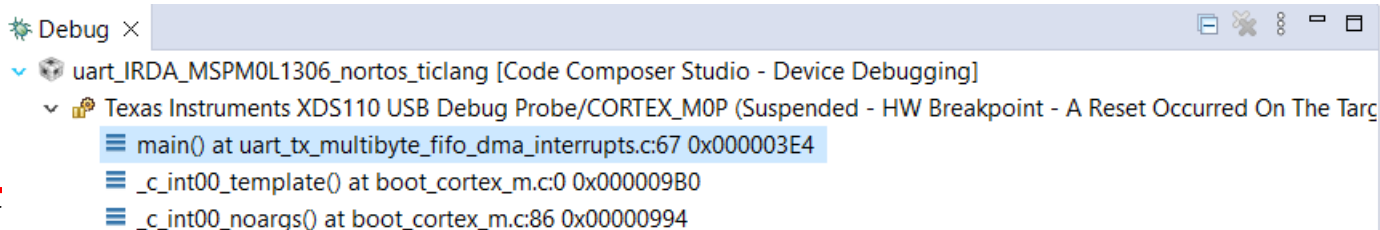
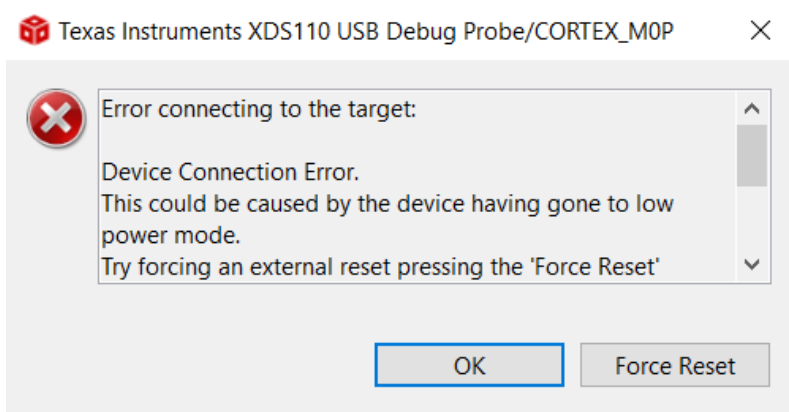
- Software steps (based on CCS)
 - Step8: Console prompts, click pause, click debug, and burn the code again.

```
Console ×
MSPM0L1306.ccxml
CS_DAP_0: GEL Output: Mass Erase Command Sent
CS_DAP_0: GEL Output: Press the reset button...
CS_DAP_0: GEL Output: Mass erase executed. Please terminate debug session, power-cycle and restart debug session.
```



Method 1: Force a DSSM Mass Erase

- Software steps (based on CCS)
 - Step9: If this error occurs, select Force Reset while **ensuring a reset connection**. Successfully connected.

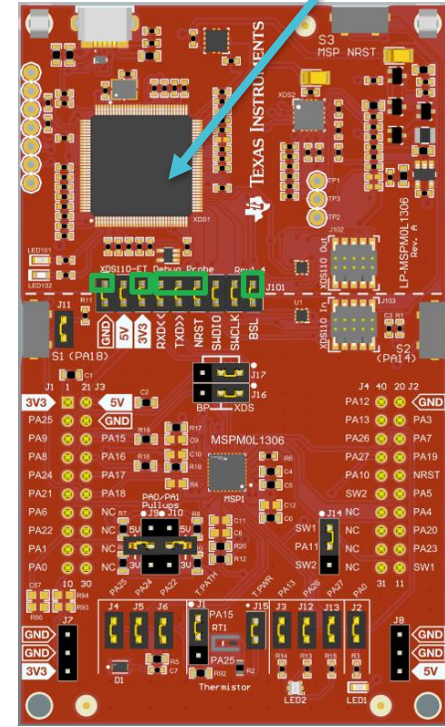


Method 2: BSL unlock

- Hardware connection (based on XDS110)
- Step 1: Remove the jumper cap.
- Step 2: Use a DuPont cable to connect the GND, 3.3V, RXD, TXD, **RST**, and **BSL** on one side of the burner to the target board. If using launchpad, a jumper needs to be used to connect RXD and TXD.

	TXD	RXD	BSL
L1306	PA23	PA22	PA18
G3507	PA10	PA11	PA18

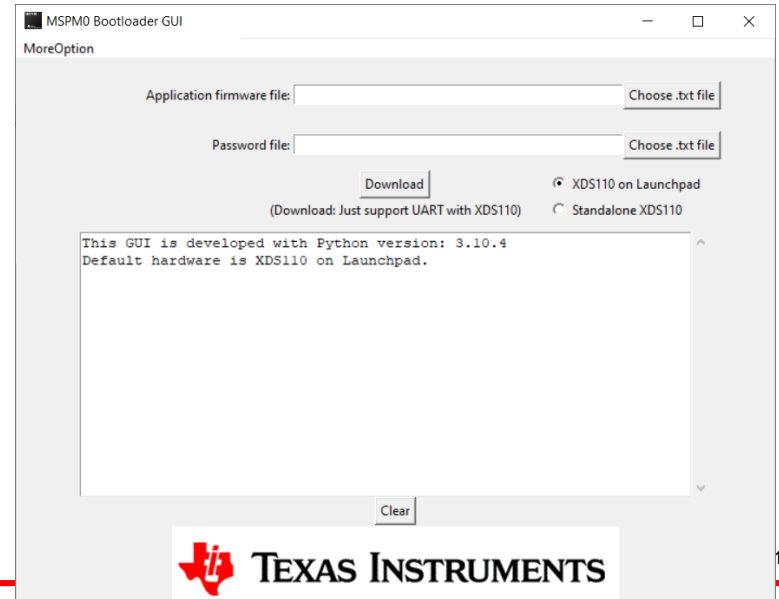
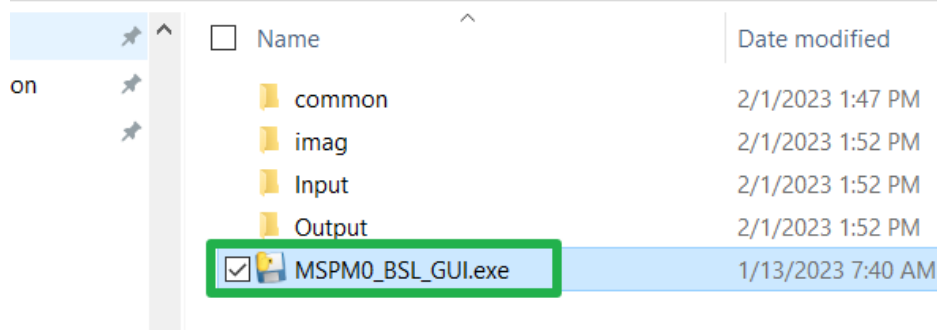
XDS110



Method 2: BSL unlock

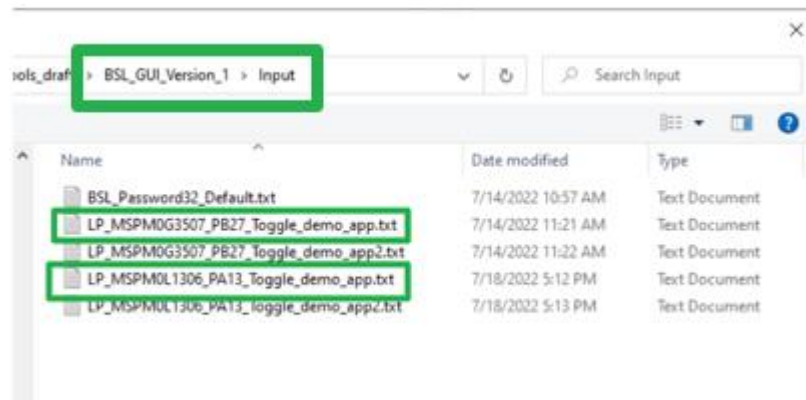
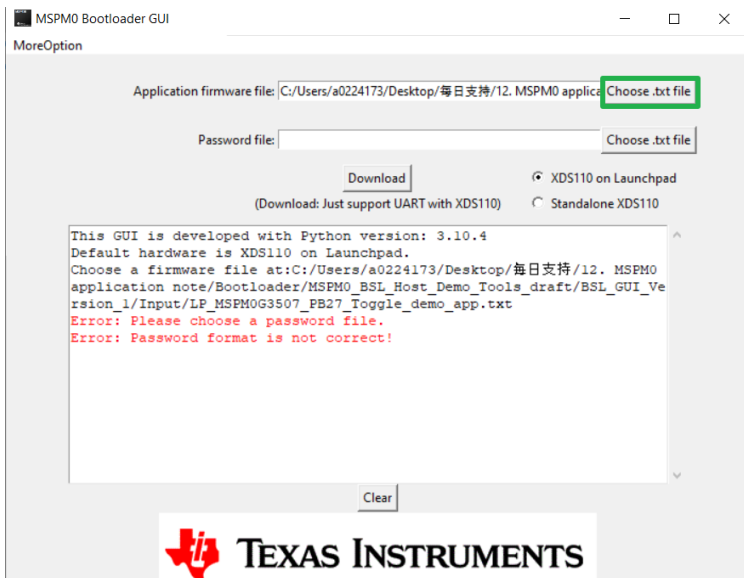
- Software steps (based on CCS)
 - Step1: Download MSPM0 SDK
 - Step2: Open this software

> ti > mspm0_sdk_0_56_00_01_eng > tools > bsl > BSL_GUI_EXE



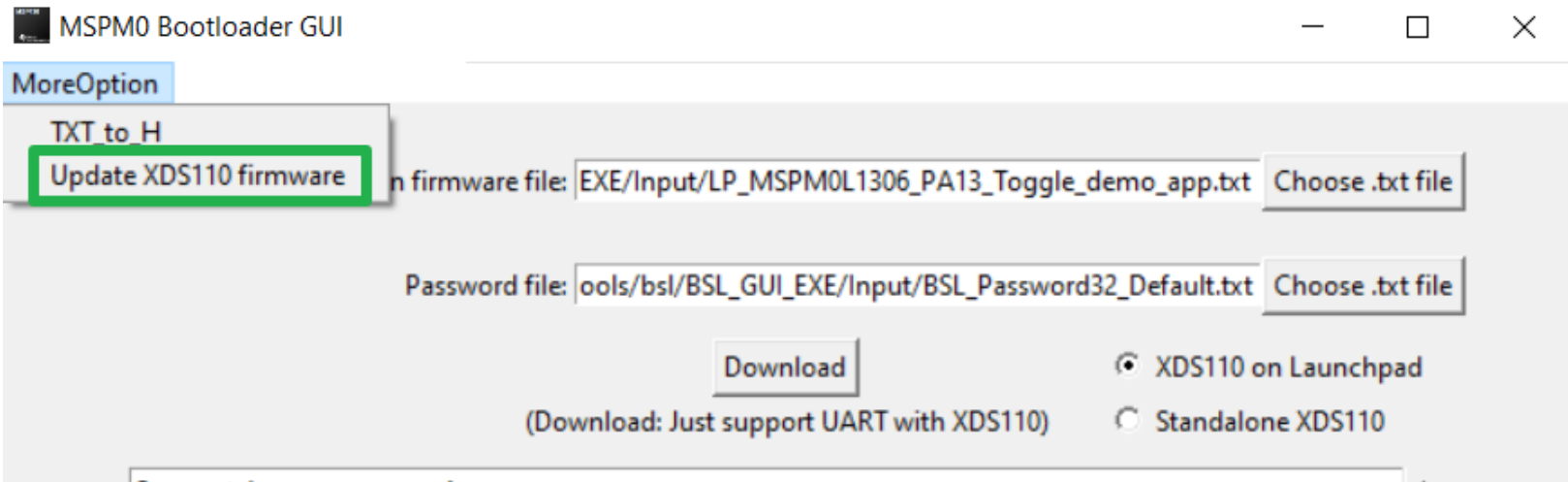
Method 2: BSL unlock

- Software steps (based on CCS)
 - Step3: Select the corresponding software firmware based on the chip used (in the input folder)



Method 2: BSL unlock

- Software steps (based on CCS)
 - Step4: Update XDS110 firmware



Method 2: BSL unlock

- Software steps (based on CCS)
 - Step5: Download firmware and unlock device

