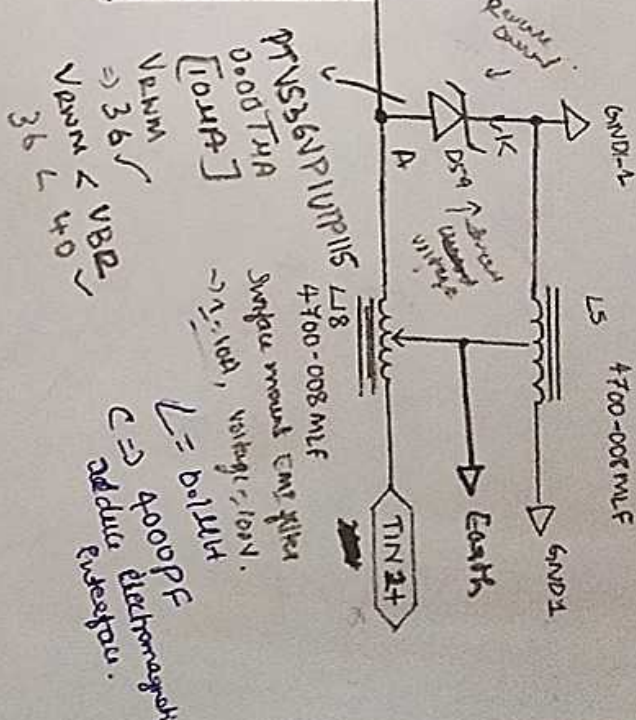


C1992 EMSBPF
 100nF
 GND-1
 2.95V
 100nF
 1.5V
 1.5V
 100nF
 1.5V



Reverse Direction
 USB 6A/P 115/115
 0.00 T/A
 [10uA]
 V_{RPM} > 3.6 ✓
 V_{AMP} < V_{BD} ✓
 3.6 < 4.0 ✓
 Surge mount EMI filter
 ~1.1uH, voltage 10V.
 L = 0.1uH
 C = 4000PF
 Additive electromagnetic
 Emission