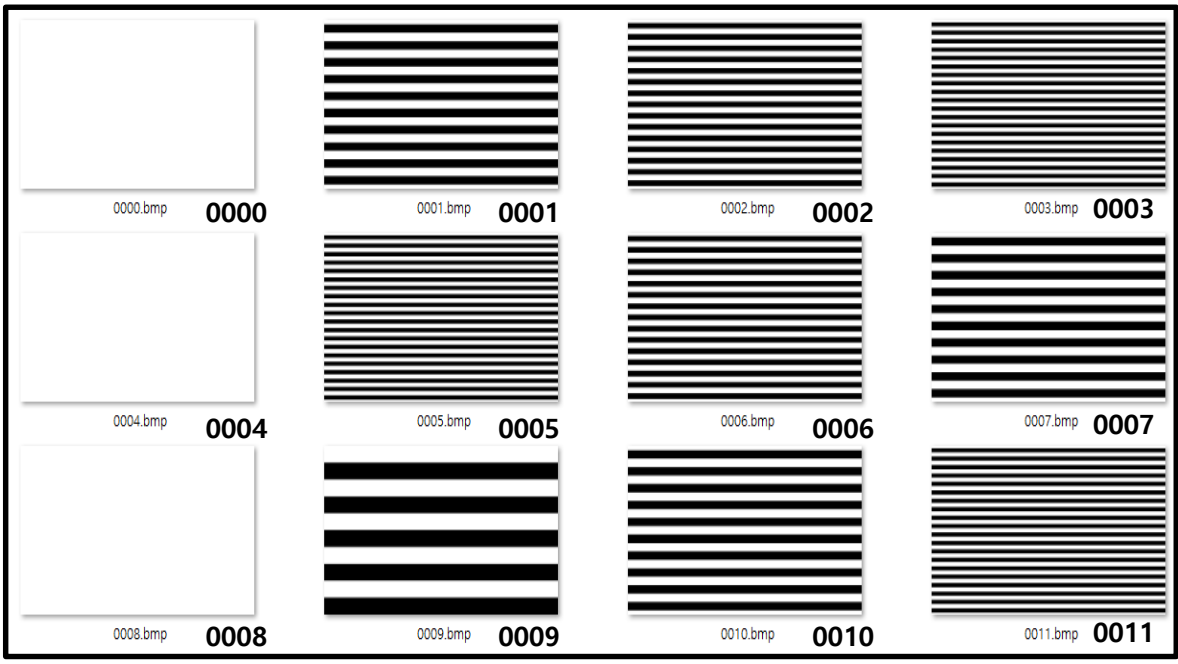
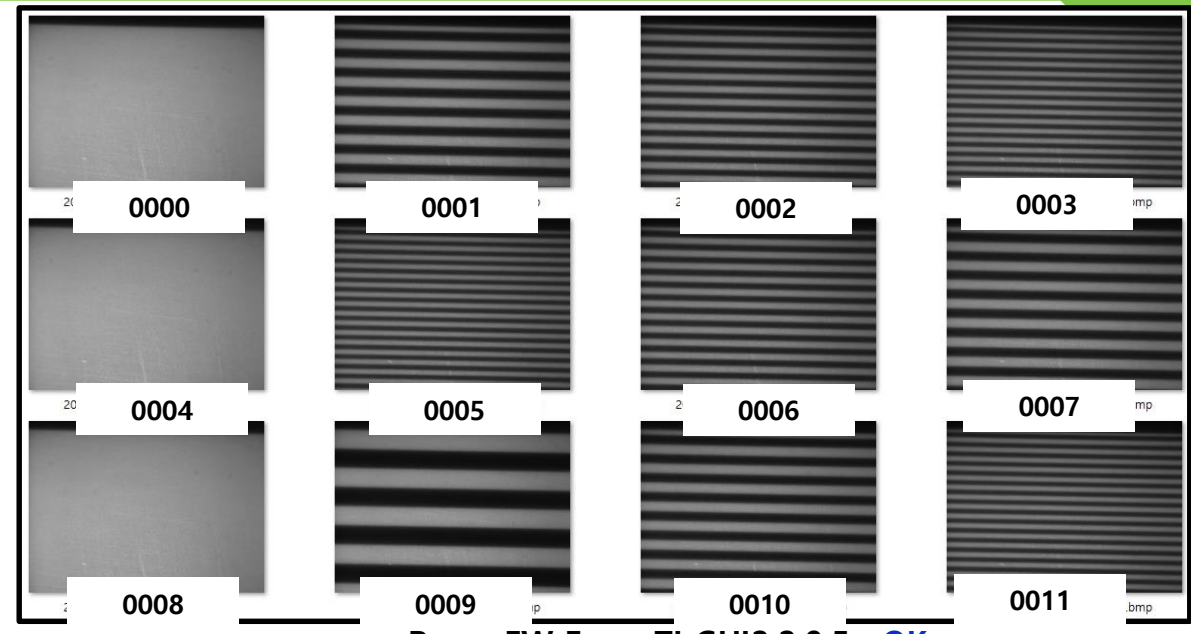


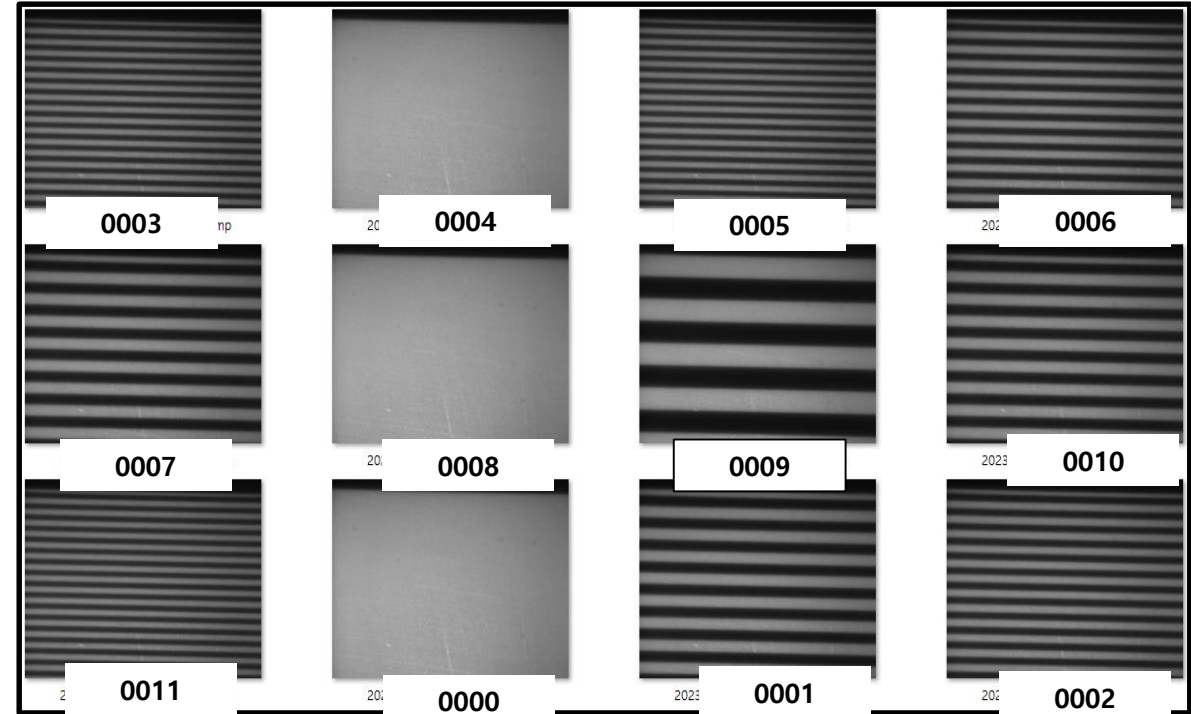
TI GUI 2.2.0.5 Vs 3.2.0.6



<Pattern Original Image>



<Beam FW From TI GUI2.2.0.5 : OK>



<Beam FW From TI GUI3.2.0.6 : NG>

# TI GUI 2.2.0.5 Vs 3.2.0.6

### 1. Define pattern configuration

Frame Rate (Hz)	<input type="text" value="20.02002"/>	Pre-exposure Dark Time (us)	<input type="text" value="8650"/>
Illumination	<input type="text" value="B"/>	Exposure Time (us)	<input type="text" value="3000"/>
Bit Depth	<input type="text" value="8"/>	Post-exposure Dark Time (us)	<input type="text" value="5000"/>
Patterns Per Frame	<input type="text" value="3"/>		

### 2. Define trigger out settings

#### Trigger Out 1

Enable

Invert

Delay (us)

#### Trigger Out 2

Enable

Invert

Delay (us)

### 3. Review the timing diagram to verify the pattern configuration

The timing diagram illustrates the relationship between the pattern configuration and the trigger signals. The top row, 'Pattern/Frame', shows three frames, each containing a 'PData' block. The middle row, 'Trigger 1', shows a single pulse at the beginning of the first frame. The bottom row, 'Trigger 2', shows a periodic pulse train that aligns with the start of each frame's PData block.